

**18"
GASOLINE
DOWNCUT
CONCRETE
AND
ASPHALT
SAW**

**MAX
CUTTING
DEPTH
6 3/4"**



MODEL #	KL-18
PART #	39600
POWER	Gasoline
ENGINE/ MOTOR	Honda GX390
*RPMs	3009
LENGTH	43"
WIDTH	25.5"
HEIGHT	38.5"
WEIGHT	222 lbs

PRODUCT NOTES: 18" Blade capacity. NEW & improved throttle cable. Easy turn crank, for lowering and raising blades in and out of cut. Screw boot belt tensioner prevents frame damage. Heavy-Duty lifting bail. 13 HP gasoline engine. Heavy-Duty 7-gauge steel laser cut frame. Large screw-type depth control. Wide-T handles with rubber grips. High quality molded rubber wheels.

REQUIRES 1 - 18" concrete or asphalt blade

IDEAL FOR:

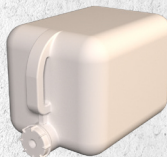
- Short run slab cutting
- Cured Contraction joints
- Patch repairs in asphalt and concrete
- Trenching



KL-18



TWIST LOCK POWER CORD
Part# 101270



KL-18 Optional Water Tank Assembly
PART# 56310