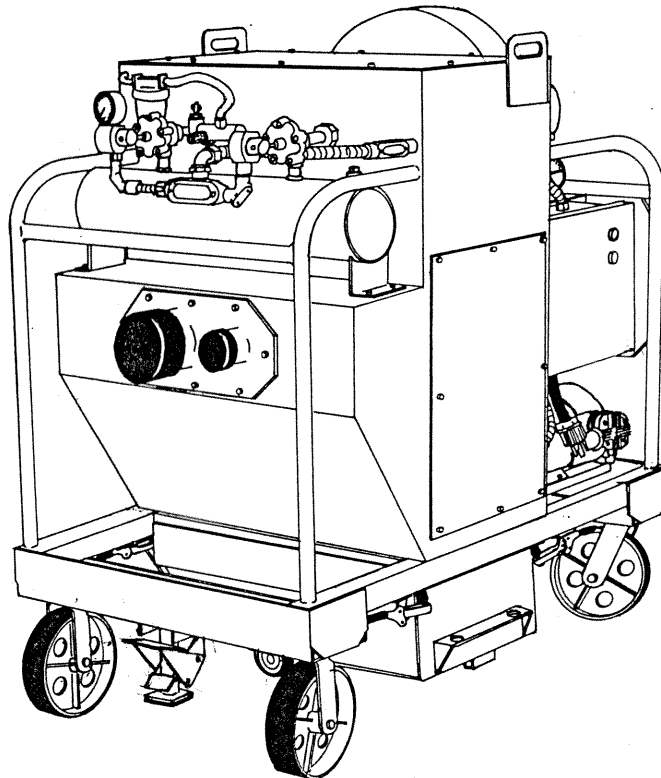


REVISED JUNE 1, 1993

DUST COLLECTOR VACUUM

PARTS LIST MANUAL



MODEL VAC-500 ELECTRIC
(FORMERLY VAC-150-E)

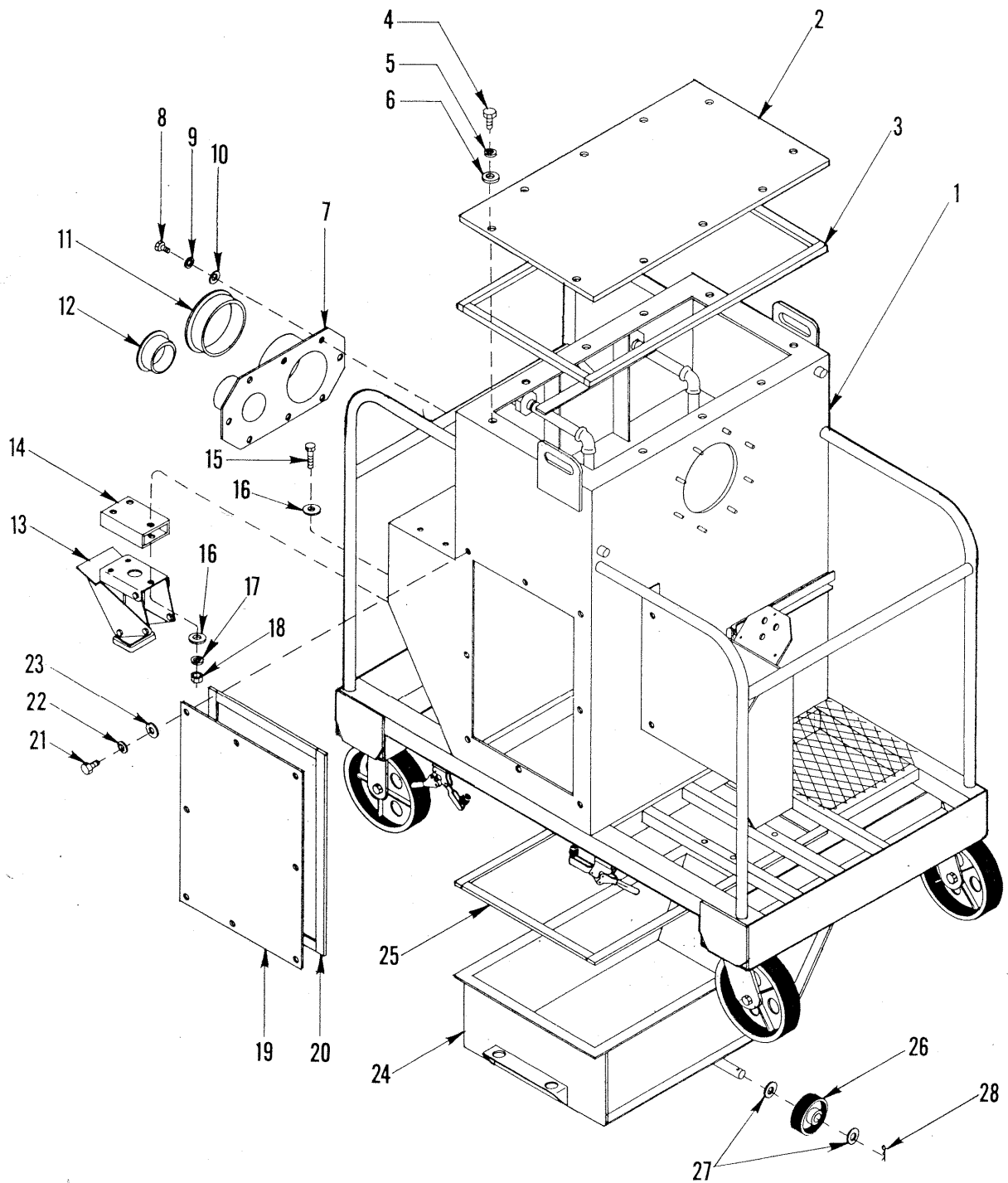
SKU # C65100 – 2 HP, 230 VOLT, 1 PHASE
SKU # C65200 – 3 HP, 460 VOLT, 3 PHASE



100 Thomas Johnson Drive, Frederick, MD 21702-4600 USA
Phone (301) 663-1600 • 1-800-638-3326
Fax (301) 663-1607 • 1-800-447-3326
Website: www.edcoinc.com • Email: sales@edcoinc.com

PRINTED IN U.S.A.

ILLUSTRATION 1: MAIN ASSEMBLY



PARTS LISTING - ILLUSTRATION 1: MAIN ASSEMBLY

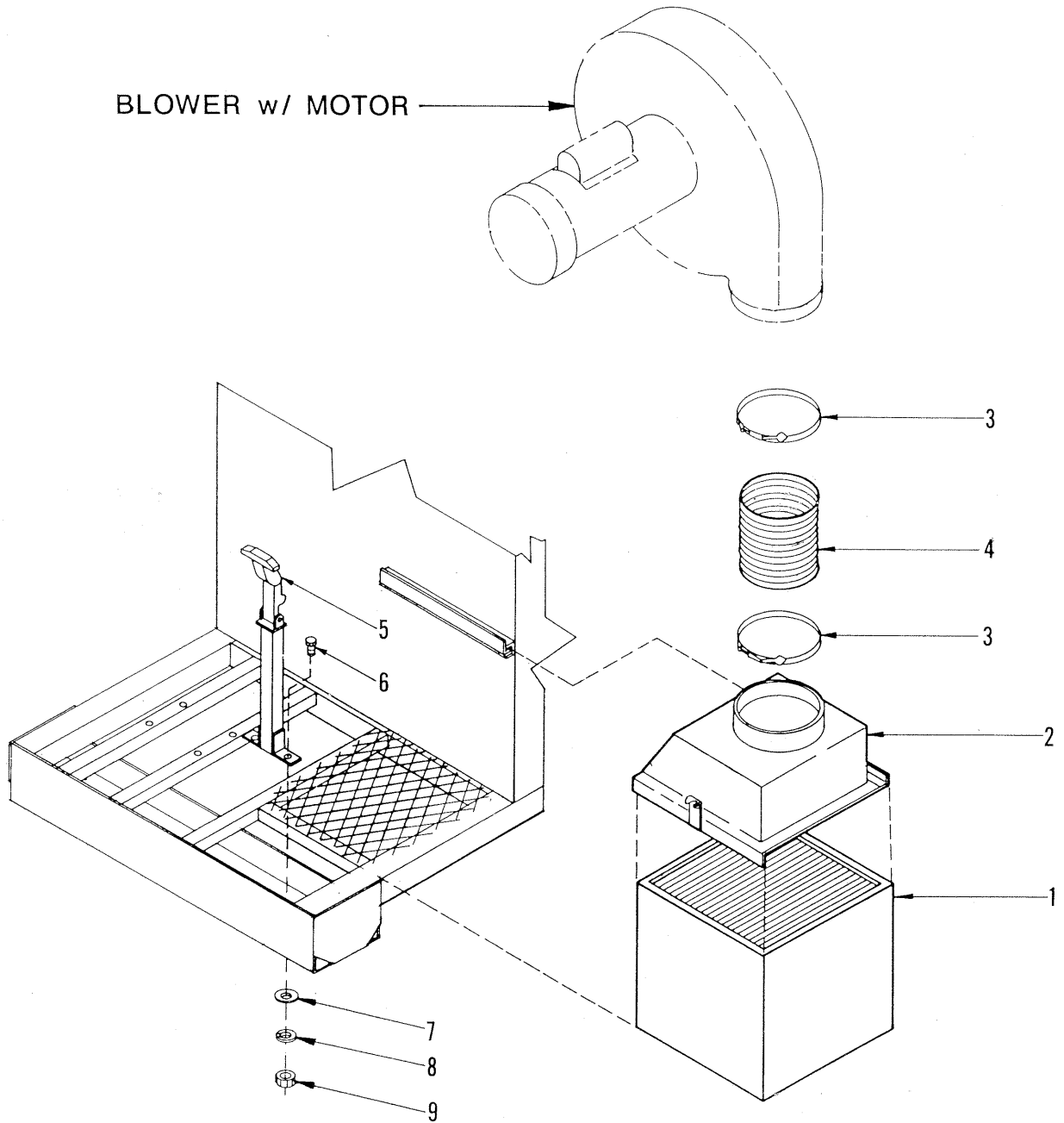
Item #	Part #	Description	Qty.
1	C65001	Main Frame	1
2	C65002	Door, Top Access 16 x 27-3/4	1
3		Seal Strips	
	C65019	1/2"W x 25"L	2
	C65020	1/2"W x 12"L	2
4	10806	Screw, Cap 5/16-18 x 1	10
5	10801	Washer, Lock 5/16	10
6	10213	Washer, Flat 5/16	10
7	C65140	Intake Plate, 3" & 5" Ports	1
8	10806	Screw, Cap 5/16-18 x 1	8
9	10801	Washer, Lock 5/16	8
10	10213	Washer, Flat 5/16	8
11	C90244	Caplug 5"	1
12	64030	Caplug 3"	1
13	68036	Kick-Stand Assembly	1
14	C65021	Kick-Stand Spacer	1
15	10010	Screw, Cap 5/16-18 x 2-1/2	3
16	10213	Washer, Flat 5/16	6
17	10801	Washer, Lock 5/16	3
18	10054	Nut 5/16-18	3
19	C65016	Door, Side Access 14-1/2 x 20-1/2	1
20		Seal Strips	
	C65006	1/2"W x 19"L	2
	C65007	1/2"W x 12"L	2
21	10806	Screw, Cap 5/16-18 x 1	8
22	10801	Washer, Lock 5/16	8
23	10213	Washer, Flat 5/16	8
24	C65017	Pan, Dust Collector	1
25		Seal Strips	
	C65003	1/2"W x 27"L	2
	C65004	1/2"W x 15-1/2"L	2
26	52001	Wheel 4"OD x 1-1/2 x 3/4"Brg.	2
27	10009	Washer, Flat 3/4	4
28	10306	Pin, Cotter 3/16 x 1-1/2	2

PARTS LISTING - ILLUSTRATION 2: AIR SYSTEM GROUPING

Item #	Part #	Description	Qty.
1	C65111	Tank, Air (See Illus. 5 for Plumbing Detail)	1
2	10806	Screw, Cap 5/16-18 x 1	4
3	10801	Washer, Lock 5/16	4
4	10213	Washer, Flat 5/16	4
5	C65022	Pipe Assembly, Filter Blow-out	1
6	10806	Screw, Cap 5/16-18 x 1	1
7	10807	Nut, Lock 5/16-18	1
8	-----	Nut & Bushing, Repair Coupling (Coupling welded to Chamber)	1
9		Blower W/ Motor (See Illus. 6 - Item #9)	1
	C65110	2-HP/1-PH, 230V	
	C65151	3-HP/3-PH, 230/460V	
9A	C65320	Blower, Pressure AF-12	1
9B		Motor, C-Face	1
	C65128	2-HP/1-PH, 230V	
	C65152	3-HP/3-PH, 230/460V	
10	10014	Nut 3/8-24	8
11	10811	Washer, Lock 3/8	8
12	10025	Washer, Flat 3/8	8
13	C65135	Guard, Blower	1
14	10828	Screw, Self-Tap 10-24 x 1/2	1
15	10455	Washer, Ext. Tooth #10	1
16		Compressor, Air (See Illus. 6 - Item #1)	1
	C65180	3/4-HP/1-PH, 230V	
	C65181	3/4-HP/3-PH, 230/460V	
17	10204	Screw, Cap 5/16-18 x 1-3/4	4
18	10213	Washer, Flat 5/16	8
19	10801	Washer, Lock 5/16	4
20	10054	Nut 5/16-18	4
21	C90225	Filter, 9 x 18 Moisture Resistant	2
22	C65108	Rod, Filter Hanger	2
23	10009	Washer, Flat 3/4	4
24	79035	Bushing, Rubber 5/8"ID x 1/4"Thk	2
25	10900	Nut, Wing 1/2-13	2
26	C65009	Baffle Plate 12 x 8	1
27	10031	Screw, Cap 1/4-20 x 1	2
28	10602	Washer, Flat 1/4	4
29	10038	Washer, Lock 1/4	2
30	10013	Nut 1/4-20	2

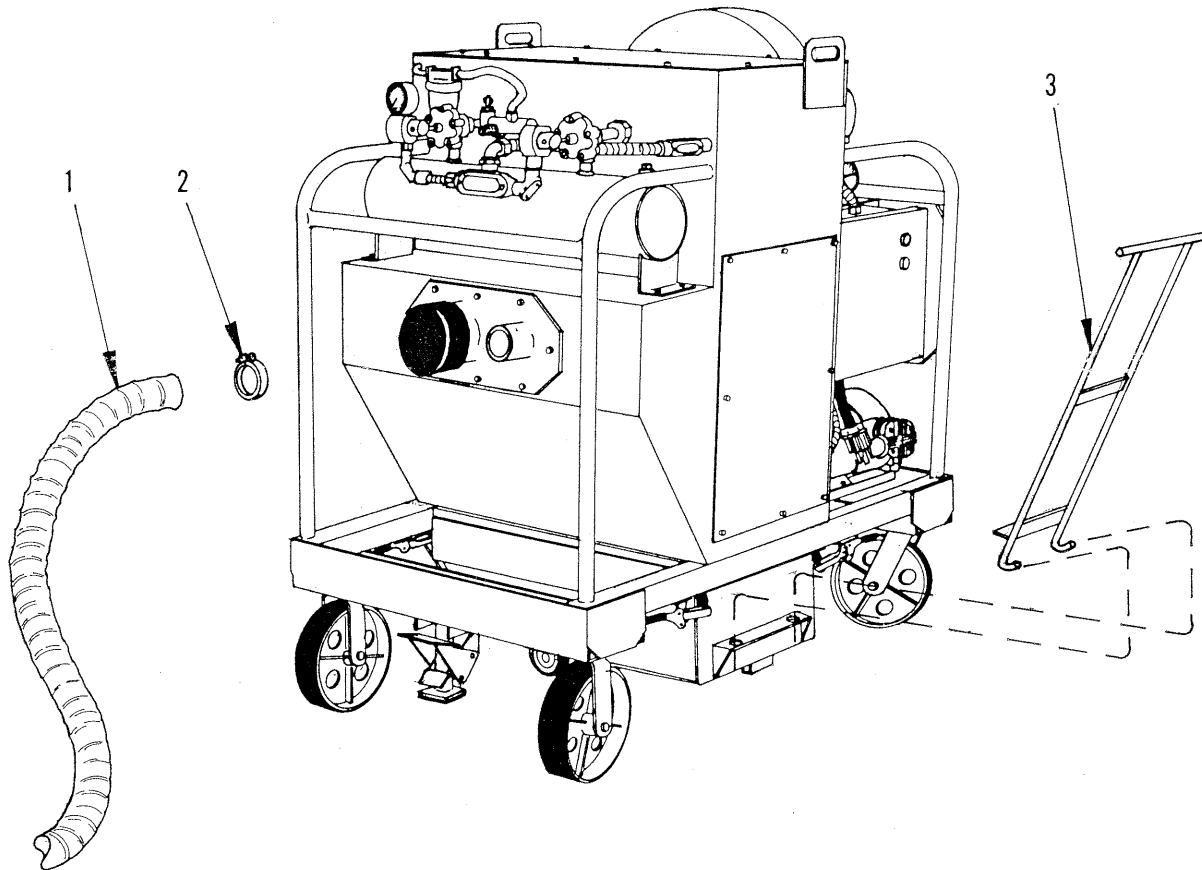
SELECT HERE FOR
14 inch BLOWER
ASSEMBLY
REVISED OCT. 1993

ILLUSTRATION 3 : OPTIONAL HEPA EXHAUST FILTER ASSEMBLY



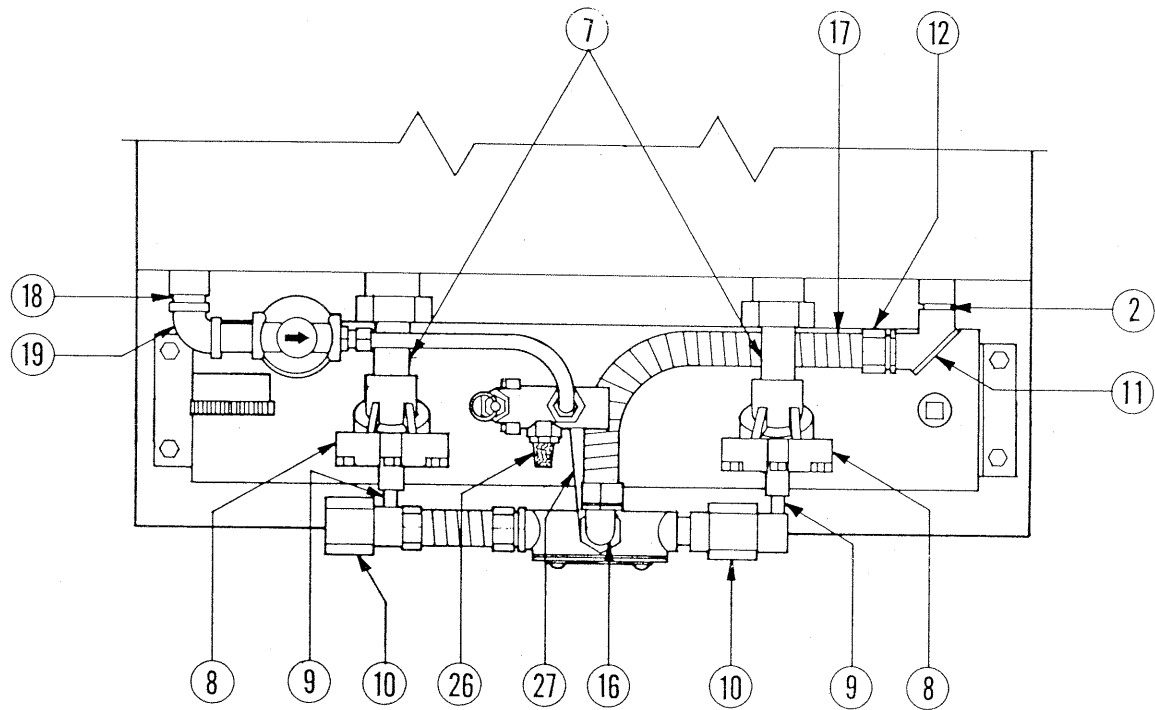
Item #	Part #	Description	Qty.
2-8	C65150	HEPA Exhaust Filter Assembly (Includes Items 2 thru 8)	
1	C90250	Filter, HEPA 12"x12"x12"	1
2	C90252	Housing, HEPA Upper	1
	C90253	Seal, HEPA Upper Housing	1
3	C90218	Clamp, Hose Adj. 4 to 7"	2
4	C65010	Hose, Flex 6"ID x 7"L	1
5	C65011	Post W/ Latch, HEPA	1
6	10018	Screw, Cap 1/4-20 x 3/4	2
7	10602	Washer, Flat 1/4	2
8	10013	Nut 1/4-20	2

ILLUSTRATION 4 : ACCESSORIES

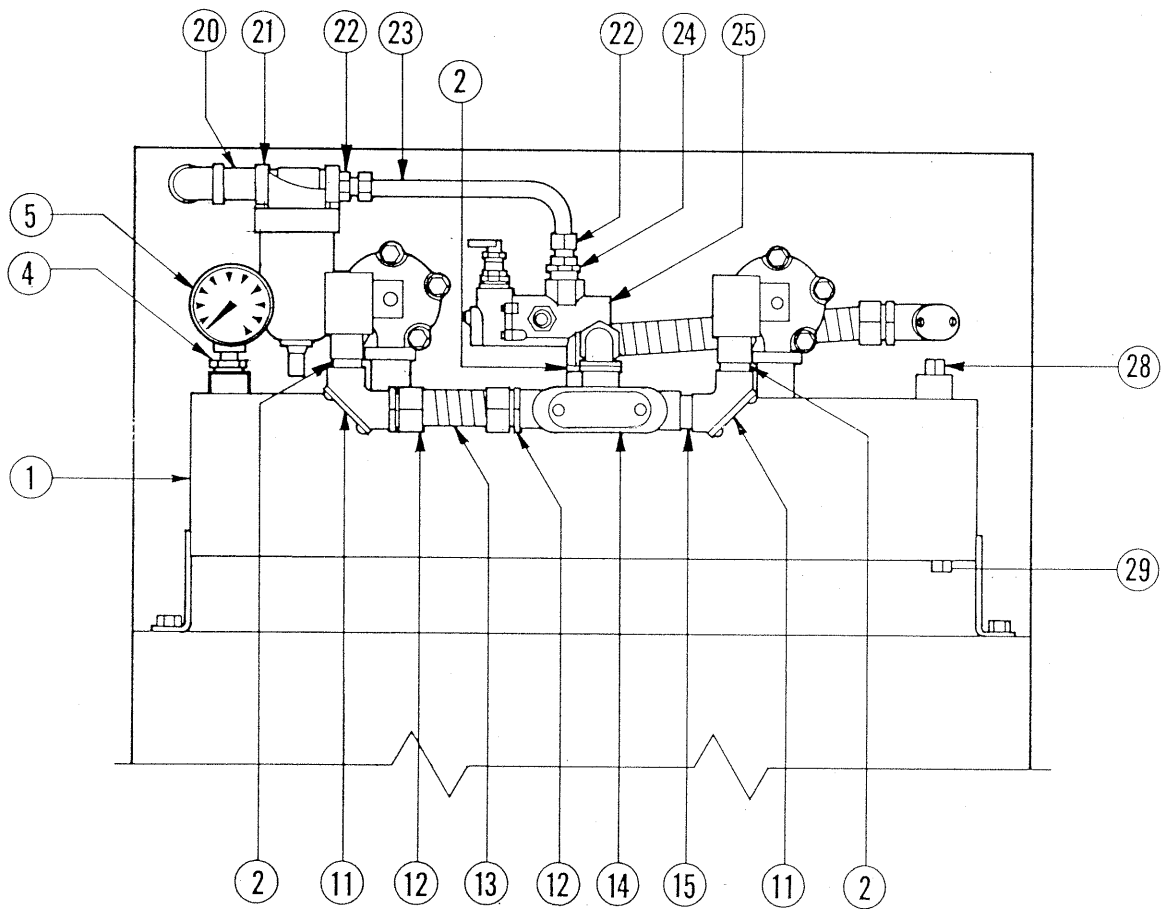


Item #	Part #	Description	Qty.
1	C65103	Hose, Flex 3"OD x 25 FT (Standard)	1
	C90215	Hose, Flex 5"OD x 50 FT (Optional)	1
2	10849	Clamp, Hose Adj. 2-13/16 to 3-3/4	2
	C90218	Clamp, Hose Adj. 4 to 7"(Optional)	2
3	C90278	Pan Handle	1

ILLUSTRATION 5 : AIR TANK PLUMBING ASSEMBLY



TOP VIEW



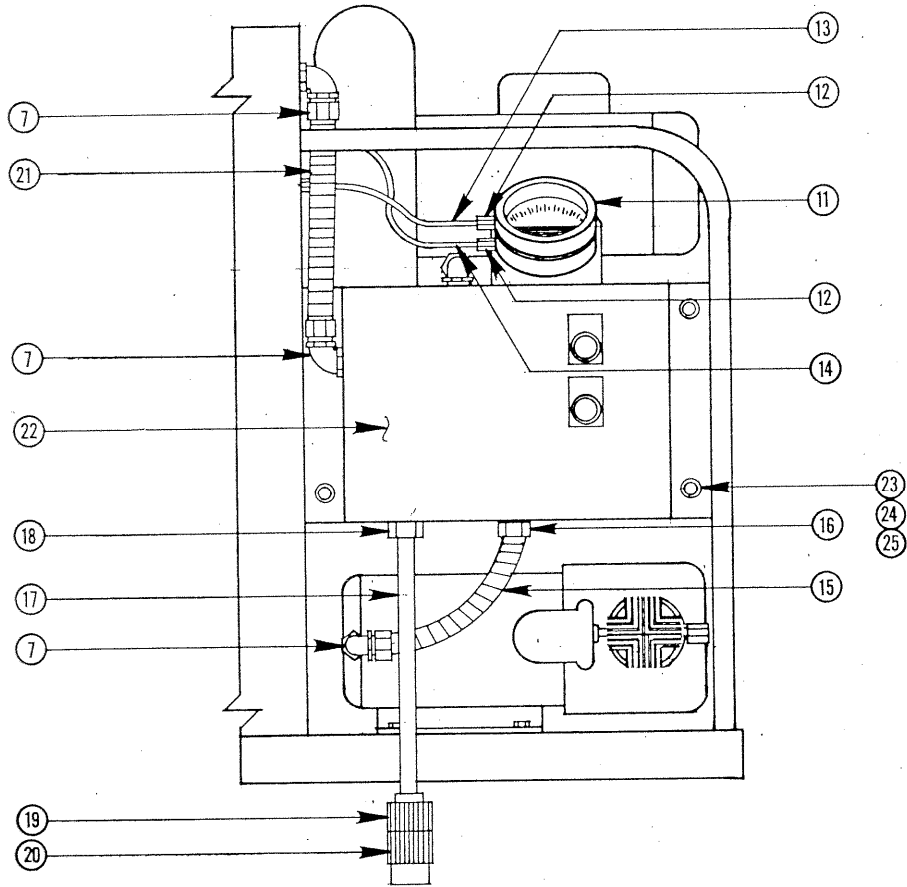
FRONT VIEW

PARTS LISTING - ILLUSTRATION 5: AIR TANK PLUMBING ASSEMBLY

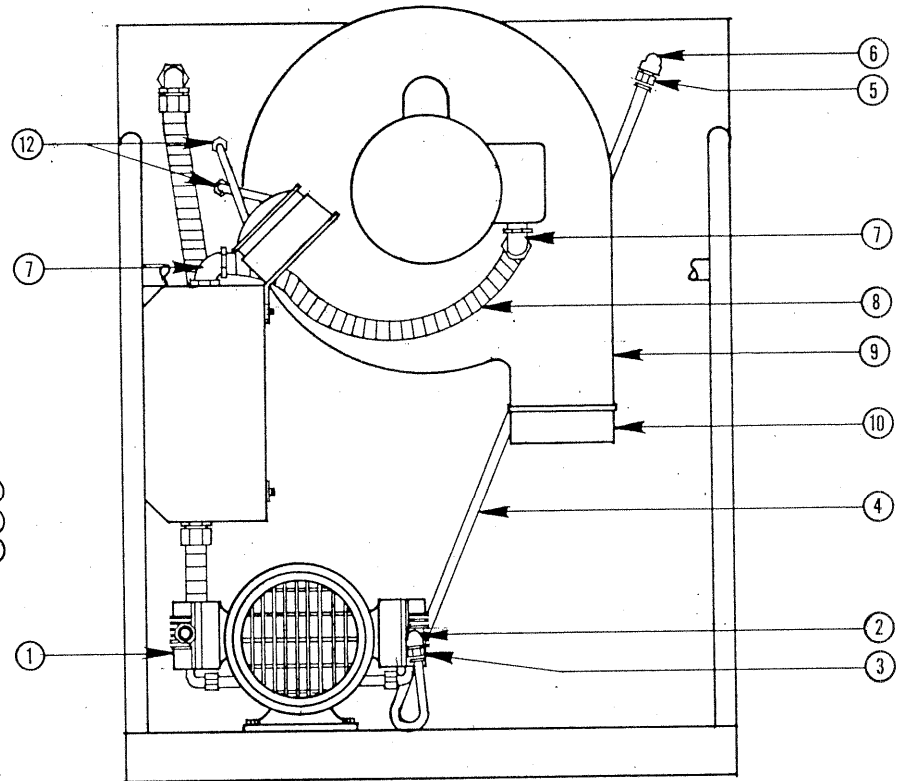
Item #	Part #	Description	Qty.
1	C65111	Tank, Air (See Illus. 2 - Item #1)	1
2	10728	Pipe Nipple, Close 1/2 NPT	4
3	-----	Part Discontinued	
4	10746	Bushing, Hex 1/2 x 1/4 NPT	1
5	C90207	Gauge, Air Pressure	1
6	-----	Part Discontinued	
7	C65109	Pipe 3/4 NPT (1 End) x 3"L	2
8	C65107	Valve, Air 3/4 NPT	2
9	10798	Pipe Nipple 1/8 NPT x 1-1/2"L	2
10	C90208	Solenoid, Air 120 VAC	2
11	C90212	Elbow, 1/2 Pull W/ Cover	3
12	C90210	Fitting, Straight Liq. Tite 1/2	3
13	C90263	Conduit, Flex 1/2 I.D. x 3-1/2	1
14	C90213	Outlet Body W/ Cover 1/2"	1
15	10796	Pipe Nipple 1/2 NPT x 1-1/2"L	1
16	C90211	Fitting, Elbow 90° Liq. Tite 1/2"	1
17	C65336	Conduit Flex 1/2 I.D. x 13	1
18	10761	Pipe Nipple 3/8 NPT x 1-1/2	1
19	10791	Elbow, Female 3/8 NPT x 90°	1
20	10787	Pipe Nipple 3/8 NPT x 2	1
21	C90204	Filter, Air Line 3/8 NPT	1
22	10607	Barb, Swivel Push-On 3/8 Hose x 3/8 MPT	2
23	C65338	Hose, Push-On 3/8" ID x 9-1/2"L	1
24	10601	Bushing, Hex 1/2 x 3/8 NPT	1
25	C65332	Valve, Unloader-Pilot-Check	1
26	C65333	Muffler/Filter 3/8 MPT	1
27	C65334	Brace, Plumbing	1
28	10689	Pipe Plug 1/2 NPT	1
29	61057	Pipe Plug 1/8 NPT	1

ILLUSTRATION 6 : CLEANING CONTROL SYSTEM

- 6 -



SIDE VIEW



REAR VIEW

PARTS LISTING - ILLUSTRATION 6: CLEANING CONTROL SYSTEM

Item #	Part #	Description	Qty.
1		Compressor, Air (See Illus. 2 - Item #16)	1
	C65180	3/4-HP/1-PH, 230V	
	C65181	3/4-HP/3-PH, 230/460V	
2	10730	Elbow, Street 1/4 NPT x 90°	1
3	10657	Barb, Push-On 3/8 Hose x 1/4 MPT	1
4	C65132	Hose, Push-On 3/8 I.D. x 56"	1
5	10607	Barb, Swivel Push-On 3/8 Hose x 3/8 MPT	1
6	10220	Elbow, Street 3/8 NPT x 90°	1
7	C90211	Fitting, Elbow 90° Liq.Tite 1/2"	5
8	C65133	Conduit, Flex 1/2 I.D. x 18"	1
9		Blower W/ Motor (See Illus. 2 - Item #9)	1
	C65110	2-HP/1-PH, 230V	
	C65151	3-HP/3-PH, 230/460V	
10	C65135	Guard, Blower (See Illus. 2 - Item #13)	1
11	C90214	Gauge, Magnehelic Pressure	1
12	10688	Fitting, Comp. 1/4 Tube x 1/8 MPT	4
13	C65136	Tubing, Nylon 1/4 O.D. x 14"	1
14	C65137	Tubing, Nylon 1/4 O.D. x 12"	1
15	C65138	Conduit, Flex 1/2 I.D. x 9-1/2"	1
16	C90210	Fitting, Straight Liq.Tite 1/2"	1
17		Wire Harness	1
	C65131	10/3 x 24" (1-Phase Units)	
	C65161	12/4 x 24" (3-Phase Units)	
18	10605	Connector, Strain Relief 3/4 NPT x .650-.750" Range	1
19		Plug	1
	40037	20A/250V	
	16114	20A/480V	
20		Plug Connector	1
	40000	20A/250V	
	16115	20A/480V	
21	C65139	Conduit, Flex 1/2 I.D. x 10"	1
22		Starter/Timer	1
	C65250	230 VAC	
	C65252	460 VAC	
23	10031	Screw, Cap 1/4-20 x 1	4
24	10038	Washer, Lock 1/4	4
25	10602	Washer, Flat 1/4	4

SELECT HERE FOR
14 inch BLOWER
ASSEMBLY
REVISED OCT. 1993

LIMITED EQUIPMENT WARRANTY

Equipment Development Company, Inc. herein referred to as EDCO warrants that each new unit manufactured by EDCO to be free from defects in material and workmanship in normal use and service for a period of (1) one year (except in the case of the cutter drum assembly on all model concrete asphalt planes, in which case the warranty period shall be 90 days) from date of shipment to the original retail or equipment rental center owner.

EDCO will, at its option, repair or replace, at the EDCO factory or at a point designated by EDCO any part, which shall appear to the satisfaction of EDCO inspection to have been defective in material or workmanship.

This warranty, does not apply to failure occurring as a result of abuse, misuse, negligent repairs, corrosion, erosion, normal wear and tear, alterations or modifications made to the product without express written consent of EDCO: or failure to follow the recommended operating practices and maintenance procedures as provided in the products operating and maintenance manuals.

This warranty does not obligate EDCO to bear any transportation charges in connection with the replacement or repair of defective parts. This warranty does not obligate EDCO to bear any expenses for travel time or of personnel in connection with any service calls.

Accessories or equipment furnished and installed on the product by EDCO but manufactured by others, including but not limited to engines, motors, electrical equipment, transmissions, etc., shall carry the accessory manufacturers' own warranty.

THIS WARRANTY IS IN LIEU OF ALL OTHER WARRANTIES, EXPRESSED OR IMPLIED, OR STATUTORY, INCLUDING ANY WARRANTIES OF MERCHANTABILITY OR OF FITNESS FOR A PARTICULAR PURPOSE.

LIABILITY LIMITATIONS

The remedies of the user set forth under provisions of warranty outlined above are exclusive and the total liability of EDCO with respect to their sale or the equipment and service furnished hereunder, in connection with the performance or breach thereof, or from the sale, delivery, installation, repair or technical direction covered by or furnished under the sale, whether based on contract, warranty, negligence, indemnity, strict liability, or otherwise shall not exceed the purchase price of the unit of equipment upon which such liability is based.

EDCO will not in any event be liable to the user, any successors in interest or any beneficiary or assignee relating to this sale for any consequential, incidental, indirect, special or punitive damages arising out of this sale or any breach thereof, or any defects on, or failure of, or malfunction of the equipment under this sale whether based upon loss of use, lost profits or revenue, interest, lost goodwill, work stoppage, impairment of other goods, loss by reason of shutdown or non-operation, increased expenses of operation of the equipment, cost of purchase or replacement power or claims of users or customers of the user for service interruption whether or not such loss or damage is based on contract, warranty, negligence, indemnity, strict liability, or otherwise.

EDCO reserves the right to modify, alter and improve any part or parts without incurring any obligation to replace any part or parts previously sold without such modified, altered or improved part or parts.

No person is authorized to give any other warranty or to assume any additional obligation on EDCO's behalf unless made in writing and signed by an officer of EDCO.

Equipment Development Company, Inc.

* * * * *

HOW TO ORDER REPAIR PARTS

To insure product safety and reliability, always use genuine EDCO replacement parts when making repairs to the equipment.

When ordering parts, please specify the MODEL and SERIAL NUMBER of the machine as given on the NAME PLATE. In addition, give part number, description, and quantity as listed on parts list.

Please note: Due to improvements and changes in the equipment, the illustrations shown may be different than the actual machine.

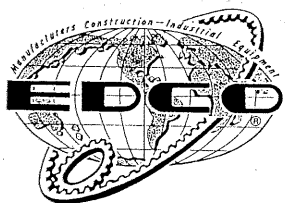
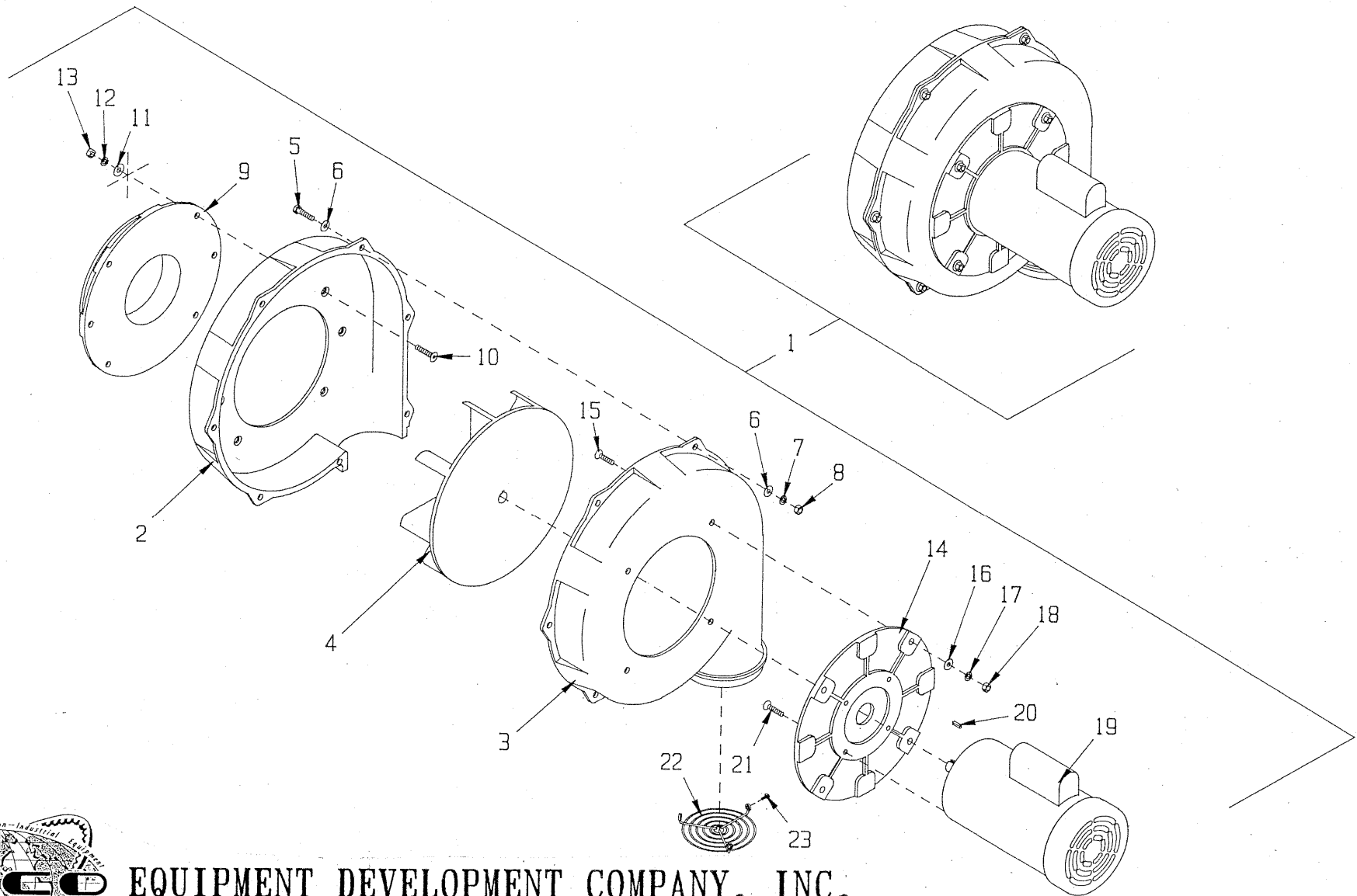


100 Thomas Johnson Drive, Frederick, MD 21702-4600 USA
Phone (301) 663-1600 • 1-800-638-3326
Fax (301) 663-1607 • 1-800-447-3326
Website: www.edcoinc.com • Email: sales@edcoinc.com

Printed in USA

Model: VAC-150-E 14 inch BLOWER ASSEMBLY

REVISED OCT. 1993



EQUIPMENT DEVELOPMENT COMPANY, INC.

100 THOMAS JOHNSON DRIVE, FREDERICK, MARYLAND 21702-4305 USA
PHONE (301)663-1600 TOLL FREE 1-800-638-3326
FAX (301)663-1607 FAX FREE 1-800-447-3326

PRINTED IN U.S.A.

Model VAC-150-E 14 inch BLOWER ASSEMBLY

Item #	Part #	Description	Qty.
1		Blower Assembly Complete, PB-14A	1
	C65192	2HP-1PH 115/208-230 Volts, 60 HZ	
	C65193	3HP-3PH 208-230/460 Volts, 60 HZ	
	C65190	3HP-3PH 200 Volts, 60 HZ	
	C65191	3HP-3PH 220/380/440 Volts, 50 HZ	
2	C65371	Blower Housing, Inlet Side	1
3	C65372	Blower Housing, Outlet Side	1
4		Blower Wheel	1
	C65196	14 x 3-1/4, B.C. w/ 5/8" Bore (2HP-1PH 115/208-230 Volts, 60 HZ 3HP-3PH 208-230/460 Volts, 60 HZ)	
	C65197	14 x 3-1/4, B.C. w/ 1-1/8" Bore (3HP-3PH 200 Volts, 60 HZ)	
	C65198	14 x 3-1/4, Str. w/ 5/8" Bore (3HP-3PH 220/380/440 Volts, 50 HZ)	
5	10068	Screw, Cap, 3/8-16 x 1-1/2	7
6	10025	Washer, Flat 3/8	14
7	10811	Washer, Lock 3/8	7
8	10404	Nut 3/8-16	7
9	C65194	Blower Inlet Pad w/ 6" Mounting Flange	1
10	10165	Screw, Flat Head Skt. 3/8-16 x 1-1/2	6
11	10025	Washer, Flat 3/8	6
12	10811	Washer, Lock 3/8	6
13	10404	Nut 3/8-16	6
14		Blower Outlet Pad	1
	C65195	All Except 200 V - 60 HZ Motor	
	C65199	200 V - 60 HZ Motor	
15	10165	Screw, Flat Head Skt. 3/8-16 x 1-1/2	4
16	10025	Washer, Flat 3/8	4
17	10811	Washer, Lock 3/8	4
18	10404	Nut 3/8-16	4
19		Motor, C-Face	1
	16023	2HP-1PH 115/208-230 Volts, 60 HZ	
	16024	3HP-3PH 208-230/460 Volts, 60 HZ	
	16027	3HP-3PH 200 Volts, 60 HZ	
	16029	3HP-3PH 220/380/440 Volts, 50 HZ	
20		Key (c/w Motor)	1
	10016	3/16" Sq. x 1-1/2 (All Except 200 V Motor)	
	10301	1/4" Sq. x 1-1/2 (200 V Motor)	
21	10165	Screw, Flat Head Skt. 3/8-16 x 1-1/2	4
22	C65376	Blower Outlet Guard	1
23	10846	Screw, Self-Tap Hex Washer 1/4-20 x 1/2	3