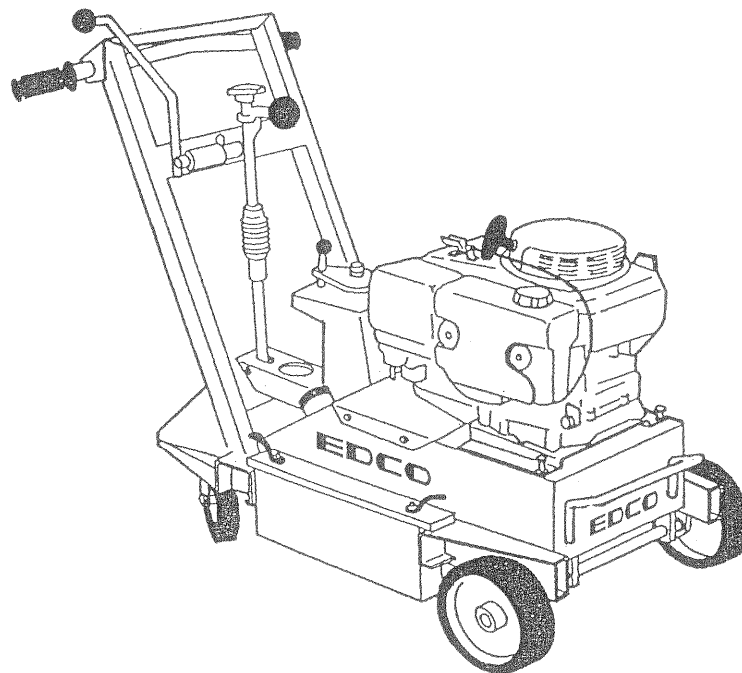


Parts List Manual

Traffic Line Remover



Models TLR-7A
(Serial No. 1398 and up)



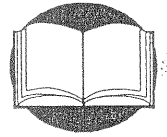
100 Thomas Johnson Drive, Frederick, MD 21702-4600 USA
Phone: 301-663-1600 • 800-638-3326
Fax: 301-663-1607 • 800-447-3326
Website: www.edcoinc.com • Email: sales@edcoinc.com

Printed in USA
©2002



READ AND UNDERSTAND THESE INSTRUCTIONS THOROUGHLY BEFORE ATTEMPTING TO OPERATE THIS EQUIPMENT.

Death or serious injury could occur if the machine is used improperly.



SAFETY MESSAGES



The safety instructions are preceded by a graphic alert message of DANGER, WARNING or CAUTION.



A safety instruction that advises that death or serious injury will result if instructions are not followed and caution exercised.



A safety instruction that advises that death or serious injury can result if instructions are not followed and caution exercised.



A safety instruction that advises that injury could result if instructions are not followed.

PLEASE FILL IN INFORMATION AND SAVE

Date of Purchase _____

Name of Machine _____

Model # _____

Serial # _____

Belt Size(s) _____

GASOLINE POWERED EQUIPMENT



The engine exhaust from this product contains chemicals known, in certain quantities, to cause cancer, birth defects or other reproductive harm.



Do not operate gasoline powered equipment without adequate ventilation. Carbon monoxide is an invisible, odorless gas that can kill.



ELECTRIC POWERED EQUIPMENT



ELECTRICAL HAZARD - Be sure equipment is properly grounded. Failure to comply could kill or result in serious injury.



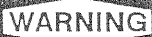
WARNING



The engine exhaust from this product contains chemicals known to the State of California to cause cancer, birth defects or other reproductive harm.

This equipment will create dust from the material being removed. That dust may contain a chemical known to the State of California to cause cancer and/or birth defects or other reproductive harm. As an example, paints and concrete contain chemicals known to the State of California to cause cancer and/or birth defects or other reproductive harm. Check the chemical properties of the material to be removed and take appropriate precautions.

It is the operator's responsibility to keep other people (workers, pedestrians, bystanders, etc.) away during operation. Block off the work area in all directions with roping, safety netting, etc. for a safe distance. Failure to do so may result in others being injured by flying debris or exposing them to harmful dust and noise.



GENERAL INSTRUCTIONS



- Read and understand the instructions, including the engine manual. Different models may have different parts and controls.
- Equipment should only be operated by trained personnel in good physical condition and mental health (not fatigued). The operator and maintenance personnel must be physically able to handle the bulk weight and power of this equipment.
- This is a one person tool. Maintain a safe operating distance to other personnel.
- This equipment is intended for commercial use.
- For the operators safety and the safety of others, always keep all guards in place during operation.
- Never let equipment run unattended.
- Keep body parts and loose clothing away from moving parts. Failure to do so could result in dismemberment or death.
- Do not lend or rent this equipment without including the operation instructions for the machine and the engine.
- Do not modify the machine. Use only genuine EDCO parts and accessories. Repairs and service should be performed by approved EDCO dealers or repair technicians.
- Stop engine/motor when adjusting, servicing or fueling.
- Gasoline is extremely flammable and poisonous. It should only be dispensed in well ventilated areas, and with a cool engine.



TLR-7 SAFETY INSTRUCTIONS

Read and understand these instructions completely before starting or using machine.



MACHINE PRECAUTIONS

1. Wear appropriate clothing, footwear, and safety attire when operating this machinery. Do not wear loose clothing that can get tangled in moving parts. The operator must wear approved safety equipment appropriate for the job, such as a hard hat, safety shoes, hearing protection, non-fogging vented safety goggles or face mask, and back support.



2. Eye and ear protection must be worn at all times when the machine is in use. During normal operation, sound levels exceed 92 dB(A).
3. Wear an approved dust/particle respirator when removing hazardous material or when grinding dry.
4. Maintain a safe operating distance to other personnel.
5. Maintain a safe operating distance from flammable materials. Sparks from the grinding-action of this machine can ignite flammable materials or vapors.
6. Obtain the engine manual. Read it and understand it before continuing. Follow the engine manual for proper operation, fueling, service and break-in instructions.
7. Disconnect the spark plug lead on the engine before servicing the machine.
8. This traffic line remover is designed to work on flat, horizontal concrete or asphalt slabs using an EDCO carbide assembly. It is controlled by a single operator from a position at the rear of the machine.
9. Read and follow all safety labels.
10. Avoid deck inserts, pipes, columns, openings, electrical outlets, or any objects protruding from slab surface.
11. Stay alert; use common sense, and avoid unsafe conditions.

OWNER RESPONSIBILITIES:

1. Provide all instruction manuals for the operator to fully read and understand.
2. Provide proper training and instruction to the operator.
3. Maintain safety decals on the machine.
4. Maintain the machine in safe operating condition with all guards securely in place, all mechanical fasteners tight, all controls in working order, and the machine configured for the job application.
5. Maintain a copy of the operators manual and engine manual with the machine for reference at all times.
6. Never allow anyone to operate the machine in an impaired physical or mental state.

OPERATOR RESPONSIBILITIES:

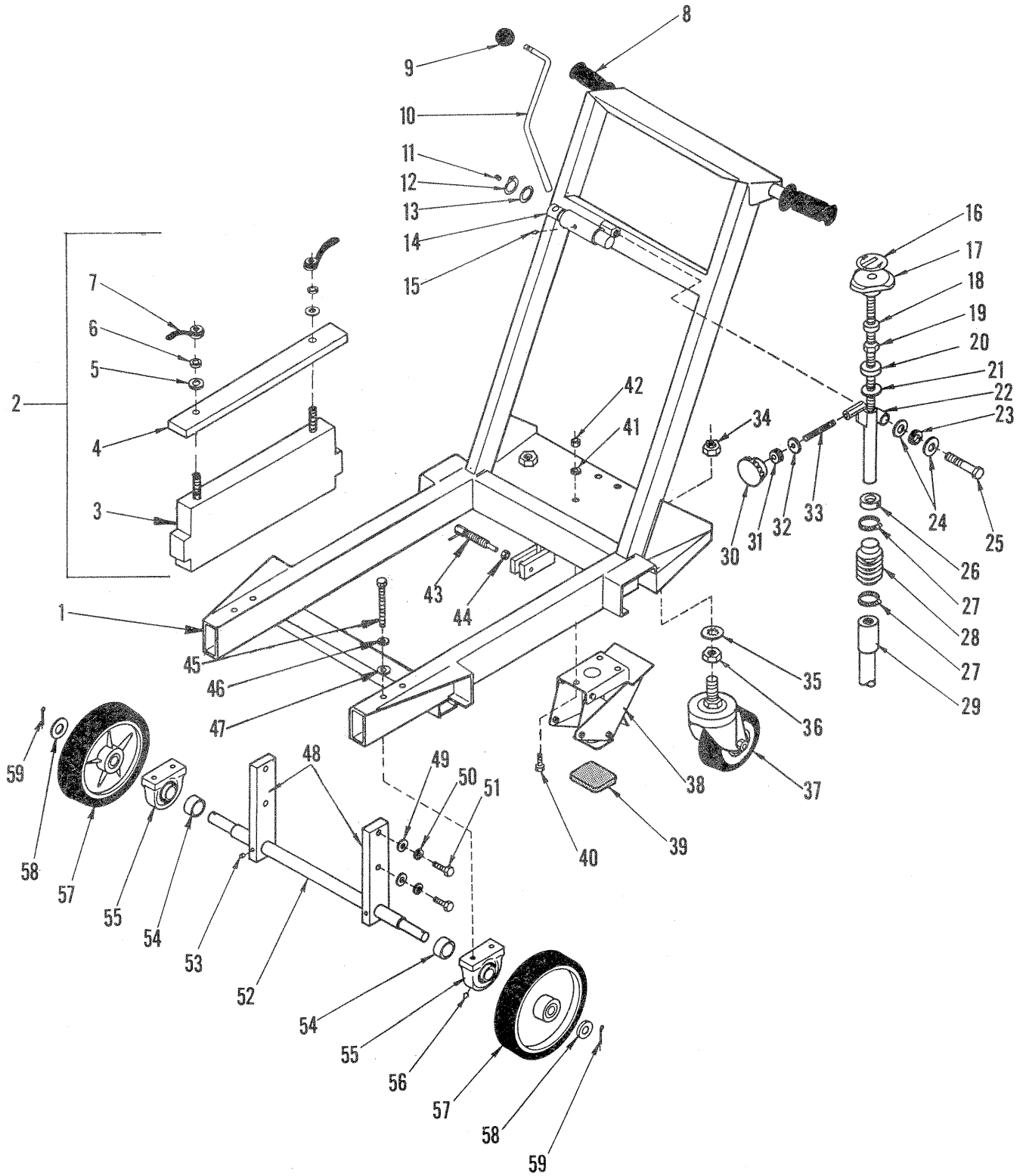
1. Be familiar with all aspects of the machine's operation and controls before starting the engine/motor.
2. Use the correct EDCO carbide assembly for the job.
3. Never operate the equipment while under the influence of drugs or alcohol, while taking medications that impair the senses or reactions, or when excessively tired or under stress.
4. Follow the instructions in the operators manual and exercise caution.
5. Never leave the machine running unattended.
6. Comply with local safety and health regulations such as ANSI B7.1 and OSHA regulations.

TLR-7 Specifications

WEIGHT (approximate — may vary depending on options)
 Machine..... 350 lbs (159 kg)
 Weights (each)..... 45 lbs (20.4 kg)
 TOTAL..... 440 lbs (200 kg)

DIMENSIONS (overall measurements)
 LENGTH..... 47 in. (119.4 cm)
 WIDTH 23 in. (58.4 cm)
 HEIGHT..... 37.5 in. (95.2 cm)

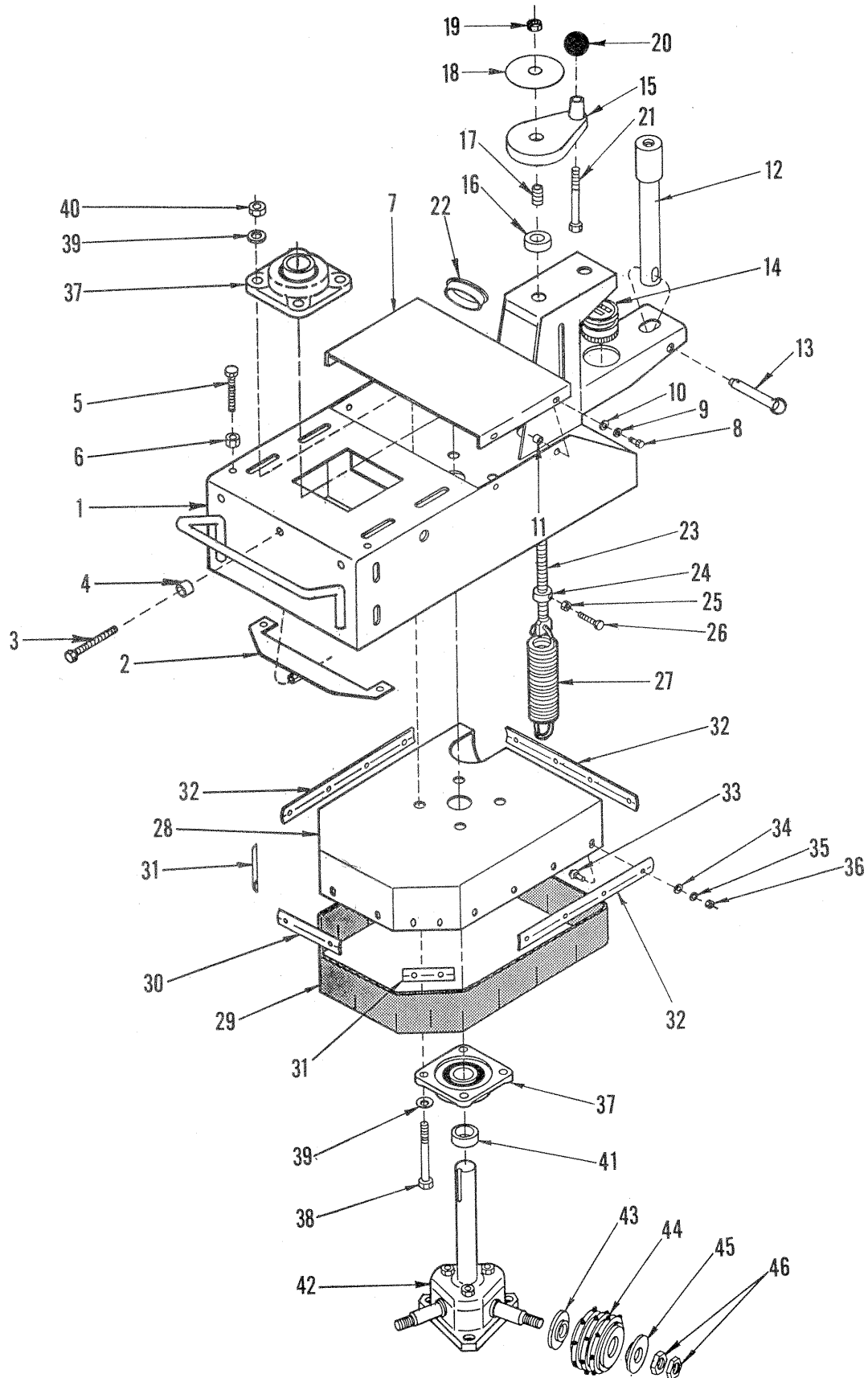
ILLUSTRATION 1: OUTER FRAME ASSEMBLY



PARTS LIST - ILLUSTRATION 1: OUTER FRAME ASSEMBLY

Item #	Part #	Description	Qty.
1	68022	Outer Frame w/ Handle	1
2	68060	Weight Unit (Items 3 thru 7)	2
3	68037	Weight Block	2
4	68038	Weight Bar	2
5	10312	Washer, Flat 1/2	4
6	10045	Washer, Lock 1/2	4
7	68040	Tailnut 1/2-13	4
8	61108	Grip Hand 1" Ribbed	2
9	14023	Knob, Ball 1/2-13 x 1-3/8Rd.	1
10	68024	Lever, Cam (Welded to Cam-Item #14)	1
11	10052	Screw, Set 5/16-18 x 3/8	1
12	10906	Retaining Ring, Ext. 1"	1
13	3629	Spacer, Copper Thrust 1"ID	1
14	68023	Cam Assembly	1
15	10953	Fitting, Grease 1/8 NPT	1
16	80007	Decal, "Cut Control" (Small)	1
17	68041	Knob, Control w/ 5/8-8 x 16" Rod	1
18	10096	Collar, Locking 5/8	1
19	50008	Nut 5/8-8 Acme	1
20	85005	Bearing, Ball 5/8"ID Thrust	1
21	10073	Washer, Flat 5/8	1
22	68042	Support, Upper Control Linkage	1
23	79035	Bushing, Rubber 5/8"ID x 1/4"THK	1
24	10073	Washer, Flat 5/8	3
25	10359	Screw, Cap 5/8-11 x 3-1/4	1
26	10440	Collar, Locking 7/8	2
27	10713	Clamp, Hose Adjustable 1" to 2"	2
28	10930	Bellows 1-1/4ID x 2-3/8EL x 1-3/4RL	1
29	68043	Linkage, Lower Control (See Illus. 2 - Item #12)	1
30	10923	Knob, Fluted 3/8-16 x 2"Dia.	1
31	56018	Bushing, Rubber 3/8ID x 1/4 Thk.	1
32	10025	Washer, Flat 3/8	3
33	68051	Stud 3/8-16 x 3-1/4	1
34	68058	Nut, Nylon Lock 3/4-10	2
35	10609	Washer, Int. Tooth 3/4	2
36	10403	Nut, Jam 3/4-10	2
37	68020	Caster, Swivel 5"Wheel W/3/4-10 Stem	2
38	68036	Kick Stand Assembly	1
39	68007	Pad, Rubber (Kick Stand)	1
40	10053	Screw, Cap 5/16-18 x 3/4	3
41	10801	Washer, Lock 5/16	3
42	10054	Nut 5/16-18	3
43	68081	Plunger, Spring 5/8-11 Thd.	1
44	10046	Nut 5/8-11	1
45	10318	Screw, Cap 3/8-16 x 3-3/4	4
46	10811	Washer, Lock 3/8	4
47	10025	Washer, Flat 3/8	2
48	68046	Holder, Front Axle	4
49	10312	Washer, Flat 1/2	4
50	10045	Washer, Lock 1/2	4
51	10143	Bolt, Tap 1/2-13 x 1-1/2	1
52	68045	Axle Shaft, Front	2
53	10052	Screw, Set 5/16-18 x 3/8	2
54	68047	Spacer, Front Axle	2
55	50222	Bearing, Ball 1" Tapped Block	2
56	10006	Fitting, Grease 1/8NPT x 45D	2
57	68008	Wheel, Poly 8 x 1-5/8 x 3/4Brg	2
58	10009	Washer, Flat 3/4	2
59	10306	Pin, Cotter 3/16 x 1-1/2	2

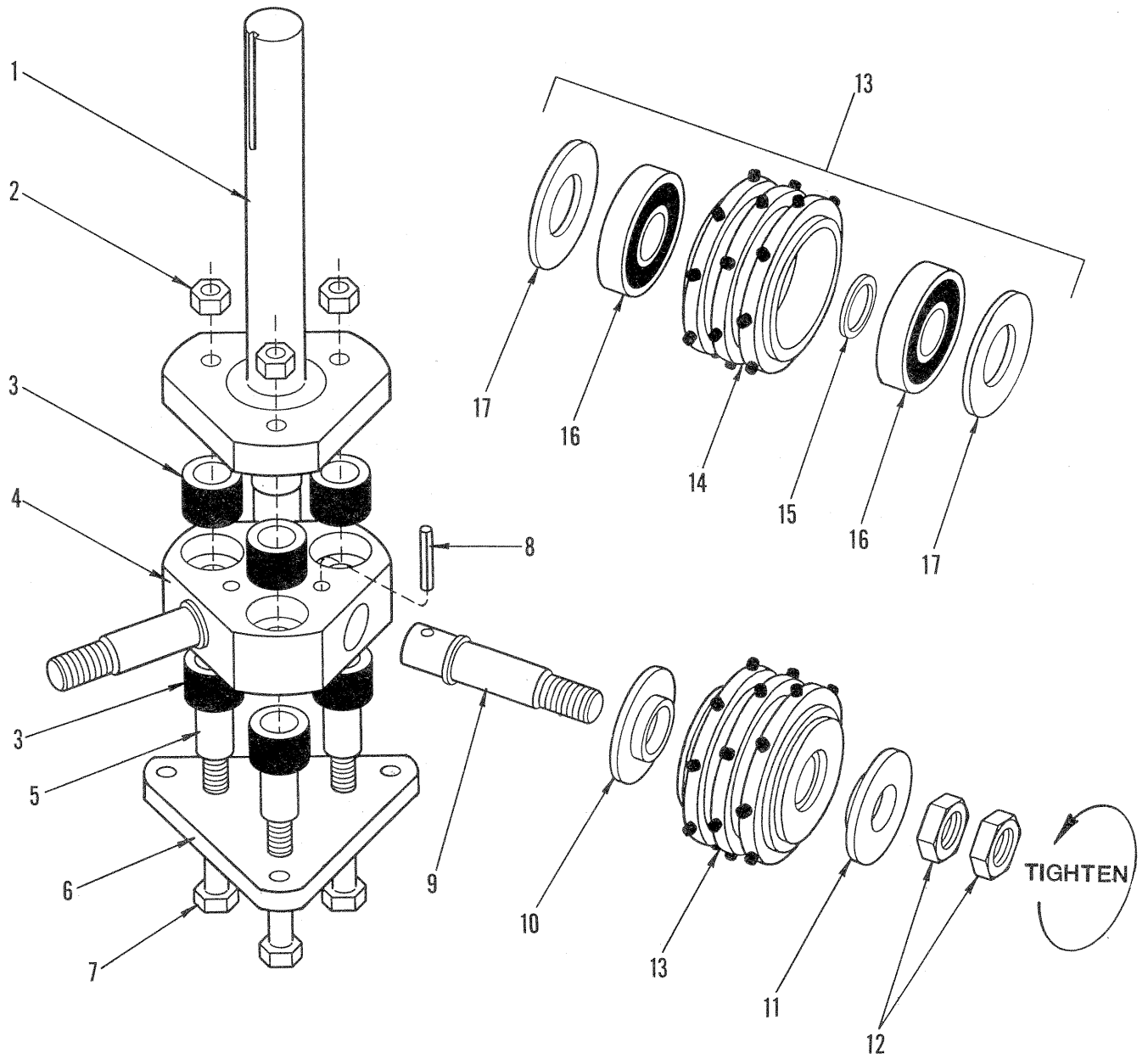
ILLUSTRATION 2 : INNER FRAME ASSEMBLY



PARTS LISTING - ILLUSTRATION 2: INNER FRAME ASSEMBLY

Item #	Part #	Description	Qty.
1	68021	Frame, Inner	1
*2	68035	Tensioner, Engine	1
*3	52015	Screw, Cap 3/8-16 x 3-1/2 Full Thd.	1
*4	10011	Spacer, Steel 5/8"OD x 3/8"ID x 3/8	1
5	10340	Screw, Cap 1/2-13 x 3 Full Thd.	2
6	10417	Nut 1/2-13	2
7	68057	Cover, Belt	1
8	10018	Screw, Cap 1/4-20 x 3/4	4
9	10038	Washer, Lock 1/4	4
10	10602	Washer, Flat 1/4	4
11	10439	Thread-sert 1/4-20	4
12	68043	Linkage, Lower Control 5/8-8 Thd.	1
13	68082	Pin, Detent Ring 1/2 x 3-1/2	1
14	68055	Meter, Hour Vibration (Optional)	1
15	68083	Handwheel, Large W/ 7/8-9 Thd.	1
16	85005	Bearing, Ball 5/8"ID Thrust	1
17	68084	Thread Insert 7/8-9 to 5/8-11	1
18	68054	Decal, "Pressure Control"	1
19	10809	Nut, Lock 5/8-11	1
20	10104	Knob, Ball 1/2-13 x 1-7/8"Rd.	1
21	10346	Screw, Skt. Hd. 1/2-13 x 4-1/2	1
22	64030	Caplug 3"	1
23	68085	Linkage, Pressure Control 5/8-11	1
24	10096	Collar, Locking 5/8	1
25	10464	Nut 1/4-28	1
26	10385	Screw, Cap 1/4-28 x 1-1/4	1
27	41041	Spring, Ext. 1.75"OD x 8"L	1
28	68025	Guard, Cutter Head	1
29	68030	Skirt, Rubber	1
30	68028	Retainer, Skirt 5-1/2"	1
31	68029	Retainer, Skirt 3-1/4"	2
32	68026	Retainer, Skirt 12"	3
33	10412	Bolt, Carr. 1/4-20 x 1	18
34	10602	Washer, Flat 1/4	18
35	10038	Washer, Lock 1/4	18
36	10013	Nut 1/4-20	18
37	68002	Bearing, Ball 1-1/4 4-Hole Flange W/ Skwezloc	2
38	10386	Screw, Cap 1/2-13 x 4-1/2	4
39	10312	Washer, Flat 1/2	8
40	10407	Nut, Lock 1/2-13	4
41	68019	Spacer, Rotary Head Main Shaft 1-1/2"OD x 1-1/4"ID x 5/8"L	1
42	68068	Spider Assembly, Rotary Head (See Illus. 3 for breakdown)	1
43	68015	Flange, Rotary Cutter Inner	3
44		Tri-cut Carbide Assembly (Set of 3)	1-Set
	26010	TR3-24 (24 Carbide Pins / Cutter)	
	26020	TR3-48 (48 Carbide Pins / Cutter)	
45	68016	Flange, Rotary Cutter Outer	3
46	10445	Nut, Jam 7/8-9 L.H.	6

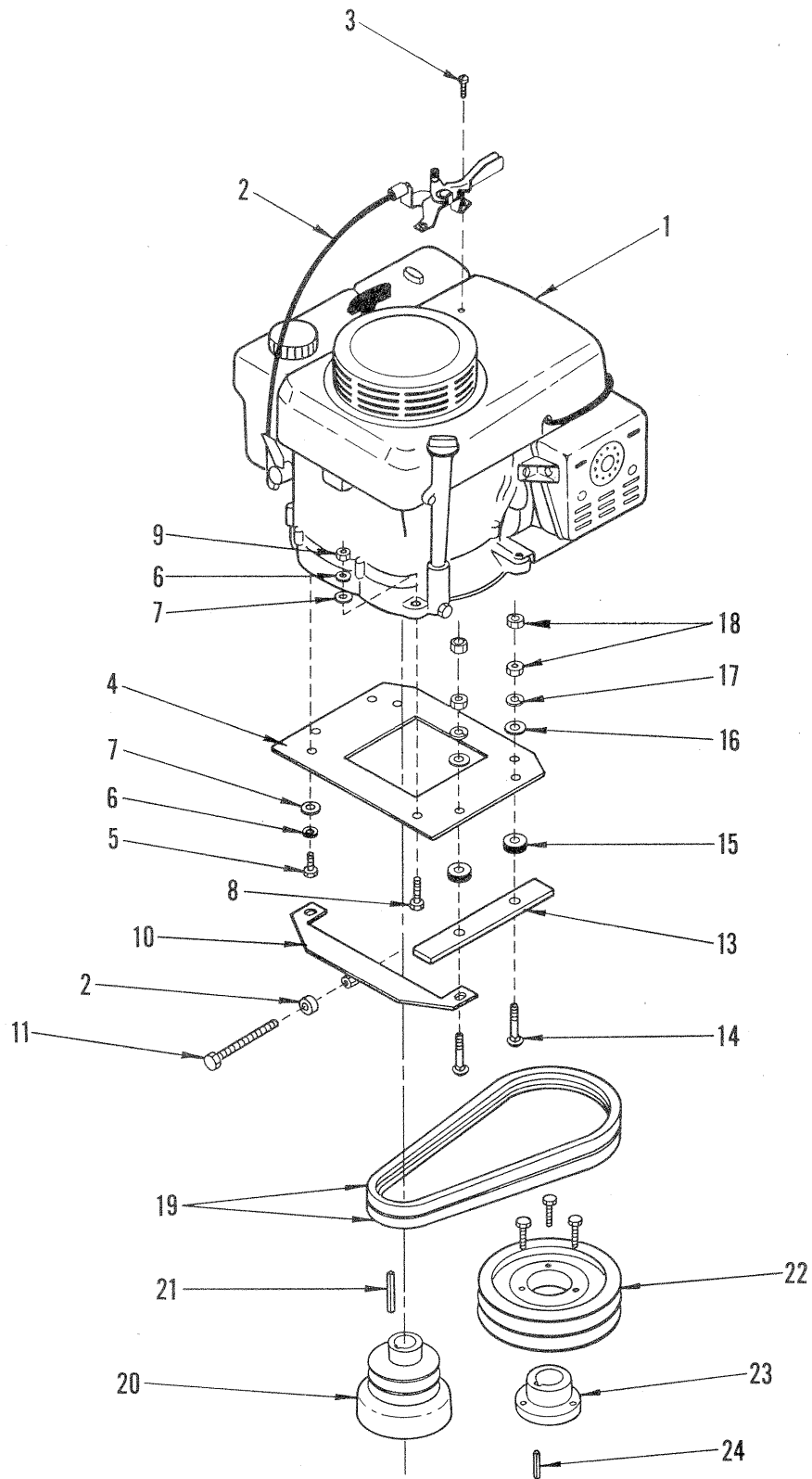
ILLUSTRATION 3 : ROTARY CUTTER HEAD ASSEMBLY



PARTS LISTING - ILLUSTRATION 3: ROTARY CUTTER HEAD ASSEMBLY

Item #	Part#	Description	Qty.
1-9	68068	Spider Assembly, Rotary Head (Includes Items 1 thru 9)	
1	68011	Shaft And Flange Assembly, Rotary	1
2	10205	Nut, Lock 1/2-20	3
3	68001	Bushing, Rubber 1-1/4"OD x 3/4"ID x 7/8"THK	6
4	68012	Hub, Rotary Head	1
5	68018	Sleeve, Rubber Bushing	3
6	68013	Flange, Rotary Cutter Head Base	1
7	10370	Screw, Cap 1/2-20 x 3-1/4 (Grade 8)	3
8	10126	Pin, Roll 5/16 x 1-1/2	3
9	68014	Shaft, Rotary Cutter	3
10	68015	Flange, Rotary Cutter Inner	3
11	68016	Flange, Rotary Cutter Outer	3
12	10445	Nut, Jam 7/8-9 L.H.	6
13		Tri-cut Carbide Assembly (Set of 3)	1-Set
	26010	TR3-24 (24 Carbide Pins / Cutter)	
	26020	TR3-48 (48 Carbide Pins / Cutter)	
14		Cutter, Rotary	1ea.
	68048	Cutter Only W/ 24 Carbide Pins	
	68088	Cutter Only W/ 48 Carbide Pins	
15	68017	Spacer, Rotary Cutter Bearing 1"ID x 1-1/4"OD x 5/32"THK	1ea.
16	68004	Bearing, Ball Radial 25mmID x 62mmOD x 17mm	2ea.
17	68006	Seal, Felt 2-1/2OD x 1-1/4ID x 3/16	2ea.

ILLUSTRATION 4 : ENGINE AND BELT DRIVE ASSEMBLY



PARTS LISTING - ILLUSTRATION 4: ENGINE & BELT DRIVE ASSEMBLY

Item #	Part #	Description	Qty.
1		Engine - Power Option	1
	76022	Briggs and Stratton 8 H.P. I/C	
	76004	Honda 11 H.P. GXV340	
	15026	Sovereign 11 H.P. WO1-340V	
2	40388	Cable, Throttle Lever Type 24"	1
3	10828	Screw, Self-Tap 10-24 x 1-1/2	2
4	68033	Mount Plate, Engine	1
5	10048	Screw, Cap 5/16-24 x 3/4	0/2
6	10801	Washer, Lock 5/16	4
7	10213	Washer, Flat 5/16	4
8	10606	Screw, Cap 5/16-18 x 1-1/4	2/4
9	10054	Nut 5/16-18	2/4
10	68035	Tensioner, Engine	1
11	52015	Screw, Cap 3/8-16 x 3-1/2 Full Thd.	1
12	10011	Spacer, Steel 3/8"ID x 3/8"W	1
13	68034	Spacer, Engine Mount	2
14	10056	Bolt, Carr. 5/16-18 x 2	4
15	10034	Bushing, Rubber 1"OD x 3/8"ID x 5/8	4
16	10213	Washer, Flat 5/16	4
17	10801	Washer, Lock 5/16	4
18	10054	Nut 5/16-18	8
19	10251	Belt BP-34	2
20	76024	Clutch, Centrifugal 3.5"OD x 2Gr. x 1"Bore	1
21	-----	Key 1/4"Sq. (Included W/ Engine)	1
22	75010	Sheave 6.9"OD x 2Gr.B x SDS	1
23	10064	Bushing, Sheave SDS x 1-1/4"Bore	1
24	10305	Key 1/4"Sq. x 1-1/4	1

LIMITED EQUIPMENT WARRANTY

Equipment Development Company, Inc. herein referred to as EDCO warrants that each new unit manufactured by EDCO to be free from defects in material and workmanship in normal use and service for a period of (1) one year (except in the case of the cutter drum assembly on all model concrete asphalt planes, in which case the warranty period shall be 90 days) from date of shipment to the original retail or equipment rental center owner.

EDCO will, at its option, repair or replace, at the EDCO factory or at a point designated by EDCO any part, which shall appear to the satisfaction of EDCO inspection to have been defective in material or workmanship.

This warranty, does not apply to failure occurring as a result of abuse, misuse, negligent repairs, corrosion, erosion, normal wear and tear, alterations or modifications made to the product without express written consent of EDCO: or failure to follow the recommended operating practices and maintenance procedures as provided in the products operating and maintenance manuals.

This warranty does not obligate EDCO to bear any transportation charges in connection with the replacement or repair of defective parts. This warranty does not obligate EDCO to bear any expense for travel time or of personnel in correction with any service calls.

Accessories or equipment furnished and installed on the product by EDCO but manufactured by others, including but not limited to engines, motors, electrical equipment, transmissions, etc., shall carry the accessory manufacturers' own warranty.

THIS WARRANTY IS IN LIEU OF ALL OTHER WARRANTIES, EXPRESSED OR IMPLIED, OR STATUTORY, INCLUDING ANY WARRANTIES OF MERCHANTABILITY OR OF FITNESS FOR A PARTICULAR PURPOSE.

LIABILITY LIMITATIONS

The remedies of the user set forth under provisions of warranty outlines above are the exclusive and total liability of EDCO with the respect to their sale or the equipment and service furnished hereunder, in connection with the performance or breach thereof, or from the sale, delivery, installation, repair or technical direction covered by or furnished under the sale, whether based on contract, warranty, negligence, indemnity, strict liability, or otherwise shall

not exceed the purchase price of the unit of equipment upon which such liability is based.

EDCO will not in any event be liable to the user, any successors in interest or any beneficiary or assignee relating to this sale for any consequential, incidental, indirect, special or punitive damages arising out of this sale or any breach thereof, or any defects on, or failure of, or malfunction of the equipment under this sale based upon loss of use, lost profits or revenue, interest, lost goodwill, work stoppage, impairment of other goods, loss by reason of shutdown or non-operation, increased expenses of operation of the equipment, cost of purchase or replacement power of claims of users or customers of the user for service interruption whether or not such loss or damage is based on contract, warranty, negligence, indemnity, strict liability, or otherwise.

EDCO reserves the right to modify, alter and improve any part or parts without incurring any obligation to replace any part or parts previously sold without such modified, altered or improved part or parts.

No person is authorized to give any other warranty or to assume any additional obligation on EDCO's behalf unless made in writing and signed by an officer of EDCO.

Equipment Development Company, Inc.

HOW TO ORDER REPAIR PARTS

To ensure product safety and reliability, always use genuine EDCO replacement parts when making repairs to the equipment.

When ordering parts, please specify the MODEL and SERIAL NUMBER of the machine as given on the NAME PLATE. In addition, give part number, description and quantity as listed on the parts list.

Please note: Due to improvements and changes in the equipment, the illustrations shown may be different than the actual machine.