

STARTING SERIAL # 060110265

PARTS LIST MANUAL**SPIRAL VAC**

*GASOLINE MODEL SHOWN

GASOLINE & ELECTRIC MODELS

SKU NO.	POWER OPTION
88100	9 HP HONDA GX270 GASOLINE ENGINE
88200	2 HP BALDOR 230V 11.5FLA SINGLE-PHASE ELECTRIC MOTOR



100 Thomas Johnson Drive, Frederick, MD 21702-4600 USA
Phone (301) 663-1600 • 1-800-638-3326
Fax (301) 663-1607 • 1-800-447-3326
Website: www.edcoinc.com • Email: sales@edcoinc.com

Printed in USA
©2006

READ AND UNDERSTAND THE OPERATORS INSTRUCTION MANUAL THOROUGHLY BEFORE ATTEMPTING TO OPERATE THIS EQUIPMENT. Death or serious injury could occur if this machine is used improperly.



SAFETY MESSAGES



The safety instructions are preceded by a graphic alert message of DANGER, WARNING, or CAUTION.



Indicates an imminent hazard which, if not avoided, will result in death or serious injury.



Indicates an imminent hazard which, if not avoided, can result in death or serious injury.



Indicates hazards which, if not avoided, could result in serious injury and or damage to the equipment.

GASOLINE Powered Equipment



- Do not operate gasoline powered equipment without adequate ventilation. Carbon monoxide is an invisible, odorless gas that can kill.

ELECTRICAL Powered Equipment



- ELECTRICAL HAZARD** - Be sure equipment is properly grounded. Failure to comply could kill or result in serious injury.



The engine exhaust from this product contains chemicals known to the State of California to cause cancer, birth defects or other reproductive harm.

GENERAL INSTRUCTIONS



- You must read and understand the operators instruction manual and all other manuals associated with this machine. For your safety and the safety of others around you, it is extremely important to fully understand how to operate this machine in the way it was intended. Different model machines or older/newer versions of the same model may have different parts and controls that you need to understand. If instructions are not readable or available DO NOT USE this machine and contact the factory for a replacement Manual.
- You must be able to physically handle the bulk weight and power of this machine. If not properly controlled this machine can cause death or serious injury.
- Do not operate this machine in an impaired mental state. You must be able to exercise good judgement and reactions to maintain a safe working environment.
- This is a "one person" machine which means only one operator can be operating the machine at any one time. For the safety of others, maintain a safe operating distance to other personnel. Your work area should be defined and appropriately marked so bystanders and coworkers do not stand or walk near this machine and end up seriously injured by flying debris or exposing them to harmful noise or dust.
- This equipment is for Commercial use. Although this is a "one person" machine your work team should understand how to shut this machine off and quickly get medical help if an accident strikes the operator.
- Keep all guards in place during operation. The guards are to provide protection from inadvertent contact with dangerous moving parts, pinch points, or hot surfaces.
- Wear appropriate Personal Protective Equipment (PPE) including safety glasses, safety boots, work gloves, respiratory protection, hearing protection, and head protection. Do not wear loose clothing that can get tangled in moving parts. Failure to do so could result

in dismemberment or death. **Wear an approved respirator when removing hazardous materials or when grinding/cutting dry materials. Some dust particles such as concrete dust can contain silicate particles which can cause silicosis (a very serious lung disease). Contact NIOSH or OSHA for further details. When wet grinding/cutting, avoid contact with the concrete/asphalt slurry which can cause serious skin irritations.**

- You must maintain this machine per the maintenance schedule in the operator manual. Remember before adjusting, servicing, or fueling this machine, disconnect the source of power to the machine by disconnecting the spark plug (Gas models), or by unplugging the electrical power cord (electric models) or air hose (Pneumatic models) AT THE MACHINE so you can assure yourself it remains unplugged while you are working on it. Do not modify this machine. Use only genuine EDCO parts and accessories. Repairs and service should be performed by approved EDCO dealers or authorized technicians.
- You should look carefully around the area before you begin work so you can identify potential hazards such as deck inserts, pipes, columns, openings, electrical cords or outlets, or any other objects protruding from the slab surface.
- This machine has no brain so you must use your own. There is no substitute for safety. The safety decals on the machine are to serve as a reminder for information you must already know before you begin using this machine. Take a moment to reread the safety decals each time you use the machine. If your machine is missing any decals, contact the factory for a replacement (EDCO 1-800-638-3326).

PARTS LIST MANUAL

SPIRAL VAC

<u>Section</u>	<u>Page Number</u>
Safety Messages and General Instructions.....	2
How To Order Replacement Parts.....	3
Illustration 1: Main Grouping.....	4,5
Illustration 2: Engine & Blower Grouping.....	6,7
Illustration 3: Motor & Blower Grouping.....	8,9
Illustration 4: Hose Options.....	10
Notes:	11
Limited Equipment Warranty.....	Back Page

HOW TO ORDER REPLACEMENT PARTS

☐ To insure product safety and reliability, always use genuine EDCO replacement parts when making repairs to the equipment.

☐ When calling for parts, specify the MODEL and SERIAL NUMBER of the machine which can be found on the NAME PLATE. Keep that information in the space provided. In addition to this information, give part number, description and quantity as listed on the parts list to your parts representative.

☐ Please note: Due to improvements and changes in the equipment, the illustrations shown may be different than the actual machine.

FILL IN INFORMATION BELOW

Date of Purchase _____

Name of Machine _____

Model # _____

Serial # _____

Belt Size(s) _____

Toll Free: 1-800-638-3326

FAX: 1-800-447-3326

email: sales@edcoinc.com

www.edcoinc.com



100 Thomas Johnson Drive, Frederick, MD 21702-4600 USA

Phone (301) 663-1600 • 1-800-638-3326

Fax (301) 663-1607 • 1-800-447-3326

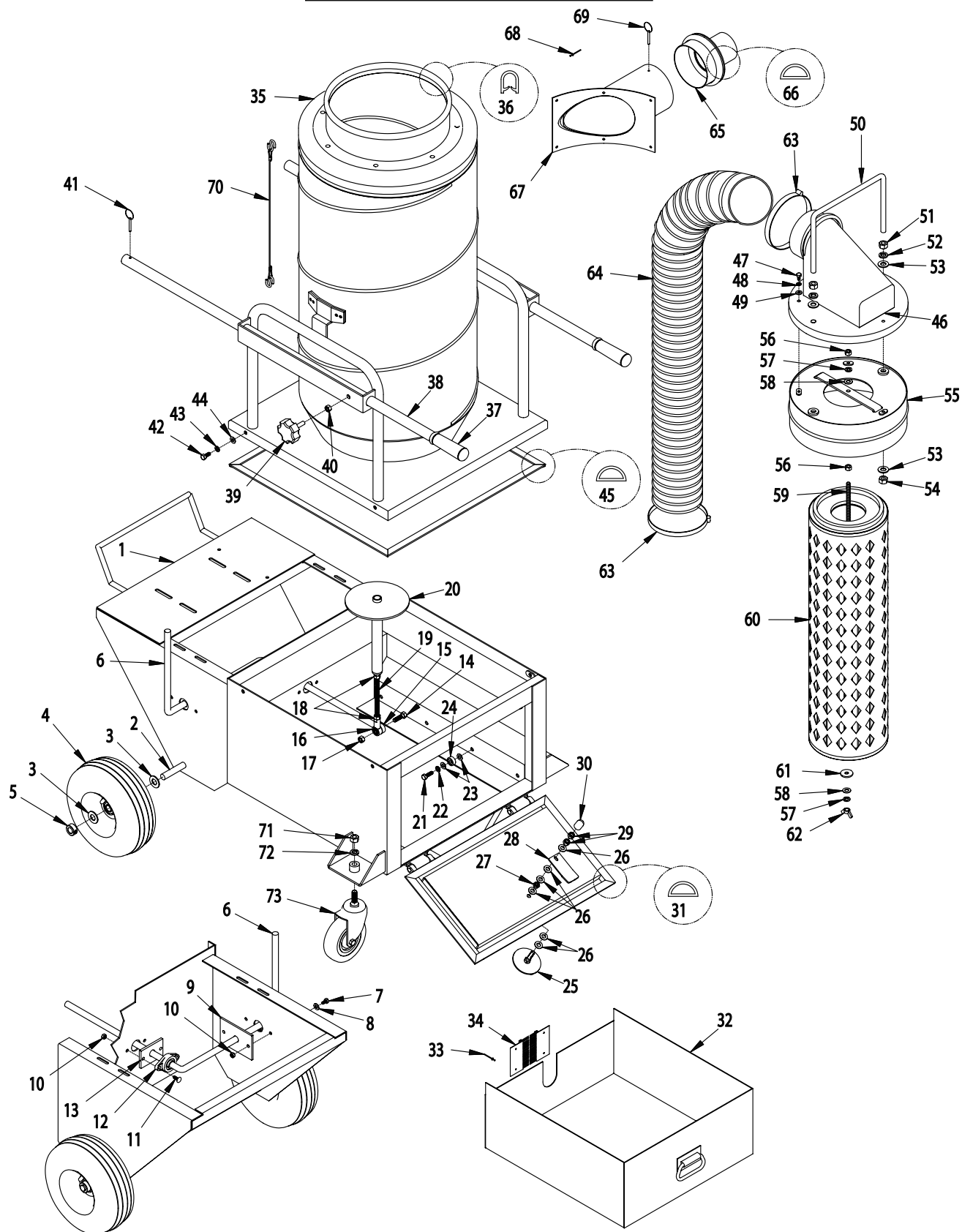
Website: www.edcoinc.com • Email: sales@edcoinc.com

Printed in USA

©2006

Page 3

ILLUSTRATION 1 : MAIN GROUPING

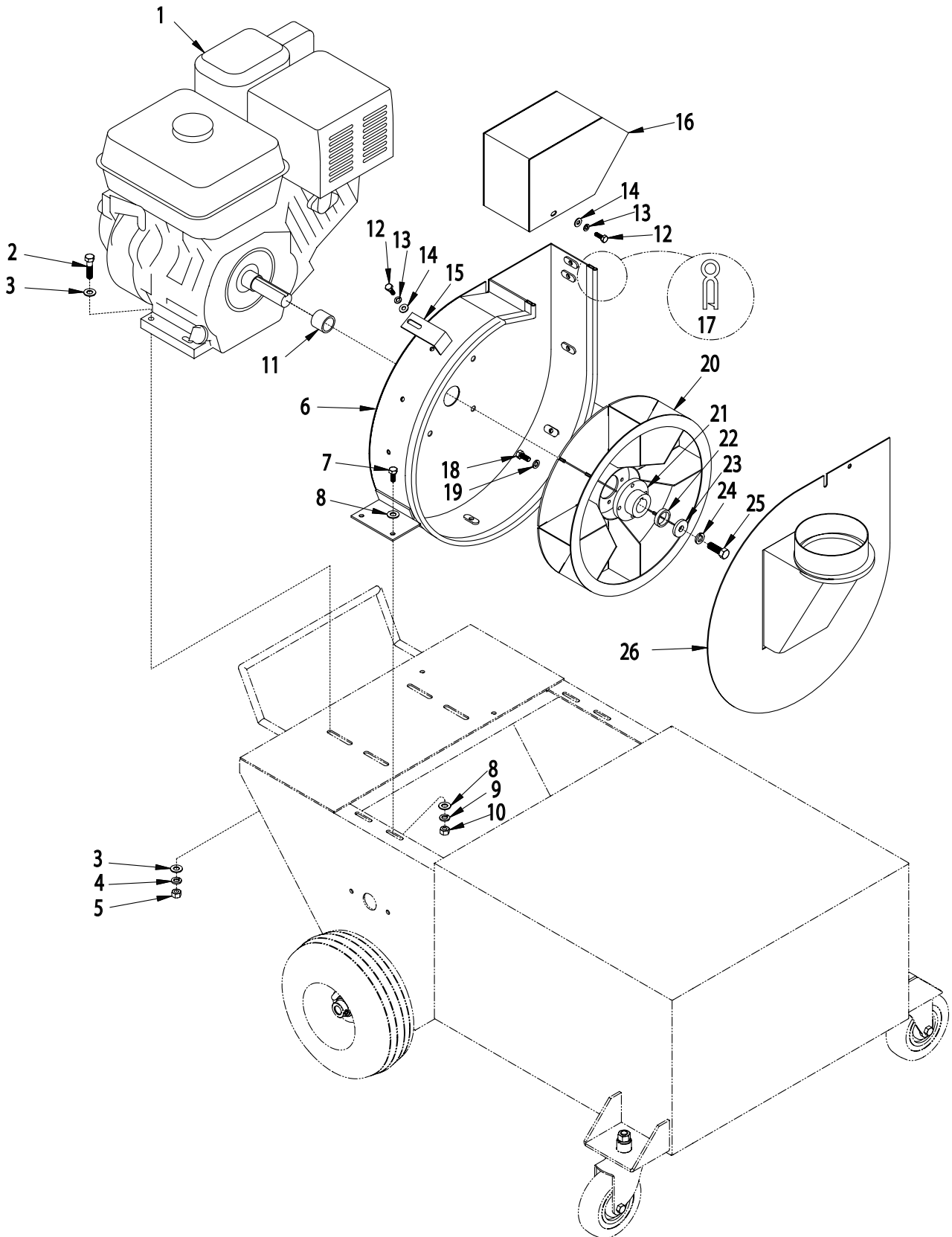


PARTS LISTING - ILLUSTRATION 1 : MAIN GROUPING

ITEM#	PART#	DESCRIPTION	QTY.	ITEM#	PART#	DESCRIPTION	QTY.
1	88101	MAIN FRAME	1	38	57490	HANDLE BAR 46"	2
2	88104	AXLE 5/8 X 28-1/4	1	39	51230	KNOB, STAR CLAMPING 3/8-16 X 1"STUD	2
3	10073	WASHER, FLAT 5/8 SAE	4	40	10404	NUT 3/8-16	2
4	24760	WHEEL 10 X 4 X 5/8"BRG. (PNEUMATIC)	2	41	10124	PIN, HAIR COTTER 1"	2
5	10096	COLLAR, LOCKING 5/8"ID	2	42	10053	SCREW, CAP 5/16-18 X 3/4	4
6	88105	SHAKER ARM	1	43	10801	WASHER, LOCK 5/16	4
7	10018	SCREW, CAP 1/4-20 X 3/4	2	44	10213	WASHER, FLAT 5/16 SAE	4
8	10602	WASHER, FLAT 1/4 SAE	2	45	88142	SEAL, CABINET LID 92"	1
9	88106	GUIDE PLATE, SHAKER ARM	1	46	88127	OUTLET, FILTER MOUNT	1
10	10861	NUT, KEPS 1/4-20	4	47	10018	SCREW, CAP 1/4-20 X 3/4	3
11	10412	BOLT, CARRIAGE 1/4-20 X 1 FULL THD.	2	48	10038	WASHER, LOCK 1/4	3
12	80009G	BEARING, BALL 5/8" 2-HOLE (W/ G.F.)	1	49	10602	WASHER, FLAT 1/4 SAE	3
13	88107	RUBBER PAD, SHAKER ARM	1	50	88126	HANDLE, FILTER OUTLET	1
14	10309	SCREW, CAP 3/8-24 X 1-1/4 PLATED	1	51	10072	NUT 1/2-20	2
15	3605	ROD END, MALE 3/8-24	1	52	10045	WASHER, LOCK 1/2	2
16	10919L	ROD END, FEMALE 3/8-24 L.H. THREAD	1	53	10312	WASHER, FLAT 1/2 SAE	4
17	10004	NUT, LOCK 3/8-24	1	54	10205	NUT, LOCK 1/2-20	2
18	10014	NUT 3/8-24	3	55	88125	MOUNT, FILTER	1
19	88109	ROD, ALLTHREAD 3/8-24 X 7	1	56	10014	NUT 3/8-24	2
20	88111	SHAKER, FILTER	1	57	10811	WASHER, LOCK 3/8	2
21	10806	SCREW, CAP 5/16-18 X 1	8	58	10025	WASHER, FLAT 3/8 SAE	2
22	10801	WASHER, LOCK 5/16	8	59	88113	ROD, ALLTHREAD 3/8-24 X 29	1
23	10213	WASHER, FLAT 5/16 SAE	16	60	88150	FILTER, CARTRIDGE 7.925 X 28	1
24	40391	BEARING, RADIAL BALL 5/16X7/8X11/32	8	61	-----	WASHER, RUBBER (INCLUDED W/ ITEM 60)	1
25	88102	KNOB, ACCESS DOOR	1	62	10903	NUT, WING 3/8-16	1
26	10025	WASHER, FLAT 3/8 SAE	4	63	36814	CLAMP, HOSE, SAE #80, ADJ. TO 5-1/2"	2
27	11680	NUT, JAM HEX 3/8-16	1	64	88144	HOSE, FLEX 5"ID X 48"	1
28	88103	LATCH, ACCESS DOOR	1	65	88124	VAC PORT REDUCER 5"-3"	1
29	10404	NUT 3/8-16	2	66	88143	SEAL, VAC PORT REDUCER 17"	1
30	88130	CAP, EPDM RUBBER 9/16 X 1-1/2	1	67	88123	VAC INLET PORT 5"	1
31	88141	SEAL, ACCESS DOOR 64"	1	68	12113	RIVET, BLIND 3/16 X .440"L X .375HD	6
32	88108	DUST PAN	1	69	10124	PIN, HAIR COTTER 1"	1
33	12113	RIVET, BLIND 3/16 X .440"L X .375HD	4	70	88128	CABLE, HOSE	1
34	88110	BRUSH EXTRUSION, DUST PAN	2	71	10417	NUT 1/2-13	2
35	88122	BARREL ASSY W/ LID	1	72	10045	WASHER, LOCK 1/2	2
36	88139	TRIM, BARREL TOP 40"	1	73	88138	CASTER, SWIVEL 5"WHEEL W/ 1/2"STEM	2
37	10608	GRIP, HAND 1" MODEL AT	2				

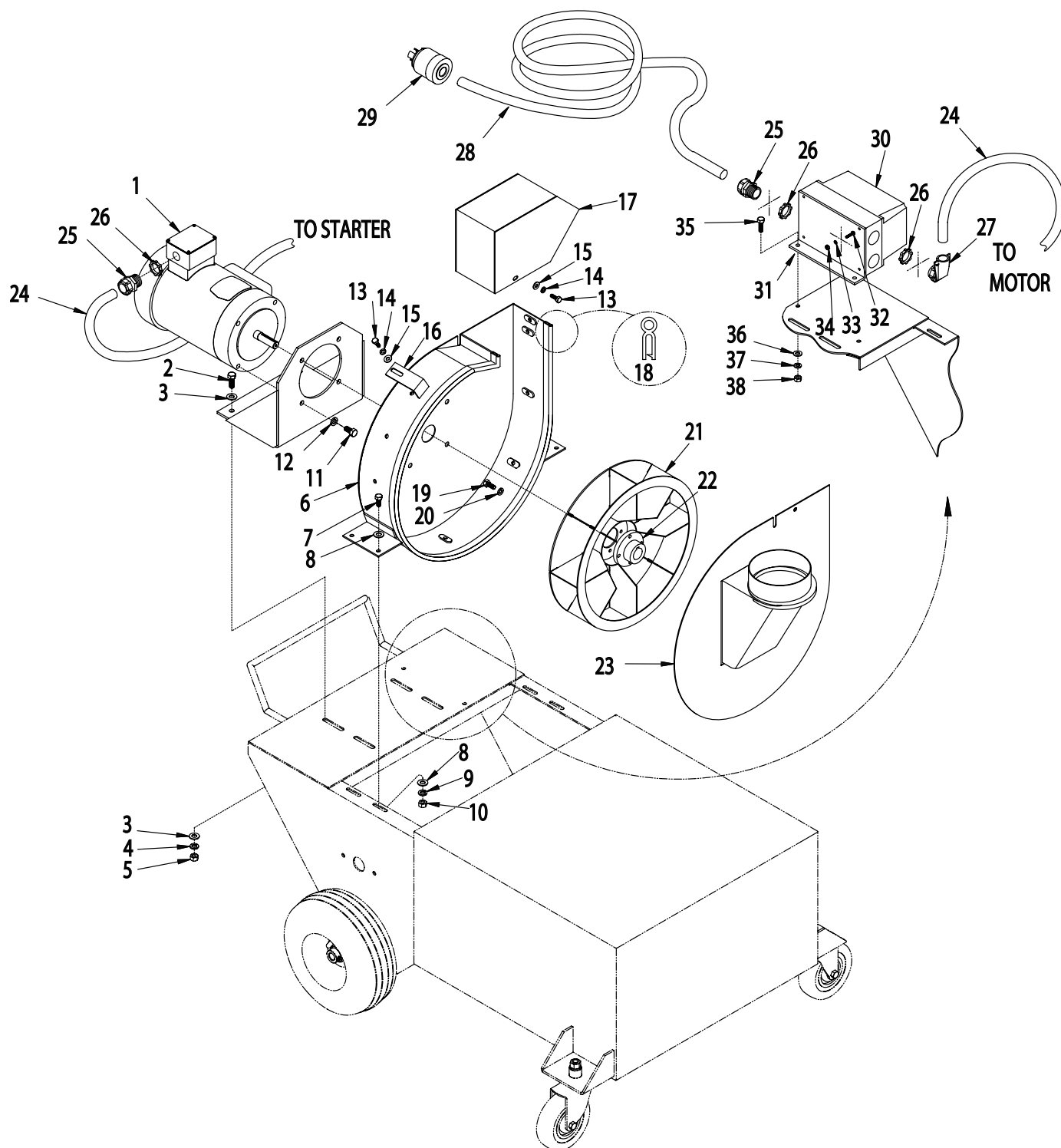


ILLUSTRATION 2 : ENGINE & BLOWER GROUPING



PARTS LISTING - ILLUSTRATION 2 : ENGINE & BLOWER GROUPING			
ITEM#	PART#	DESCRIPTION	QTY.
1	15053	ENGINE, HONDA 9 HP GX270-QA2	1
2	10068	SCREW, CAP 3/8-16 X 1-1/2	4
3	10025	WASHER, FLAT 3/8 SAE	8
4	10811	WASHER, LOCK 3/8	4
5	10404	NUT 3/8-16	4
6	88114	BLOWER HOUSING	1
7	10053	SCREW, CAP 5/16-18 X 3/4	4
8	10213	WASHER, FLAT 5/16 SAE	AS REQ'D.
9	10801	WASHER, LOCK 5/16	4
10	10054	NUT 5/16-18	4
11	88120	BLOWER WHEEL LARGE SPACER	1
12	10834	SCREW, CAP 1/4-20 X 1/2	9
13	10038	WASHER, LOCK 1/4	9
14	10602	WASHER, FLAT 1/4 SAE	9
15	89120	CLAMP, BLOWER HOUSING COVER	7
16	88121	EXHAUST PORT, BLOWER	1
17	88140	TRIM, BLOWER HOUSING 60"	1
18	10053	SCREW, CAP 5/16-18 X 3/4	4
19	10801	WASHER, LOCK 5/16	4
20	88116	BLOWER WHEEL	1
21	88117	BLOWER WHEEL HUB	1
22	88119	BLOWER WHEEL SMALL SPACER	1
23	88118	BLOWER WHEEL HUB WASHER	1
24	10450	WASHER, LOCK 7/16	1
25	10003	SCREW, CAP 7/16-20 X 1-1/4	1
26	88115	BLOWER HOUSING COVER	1

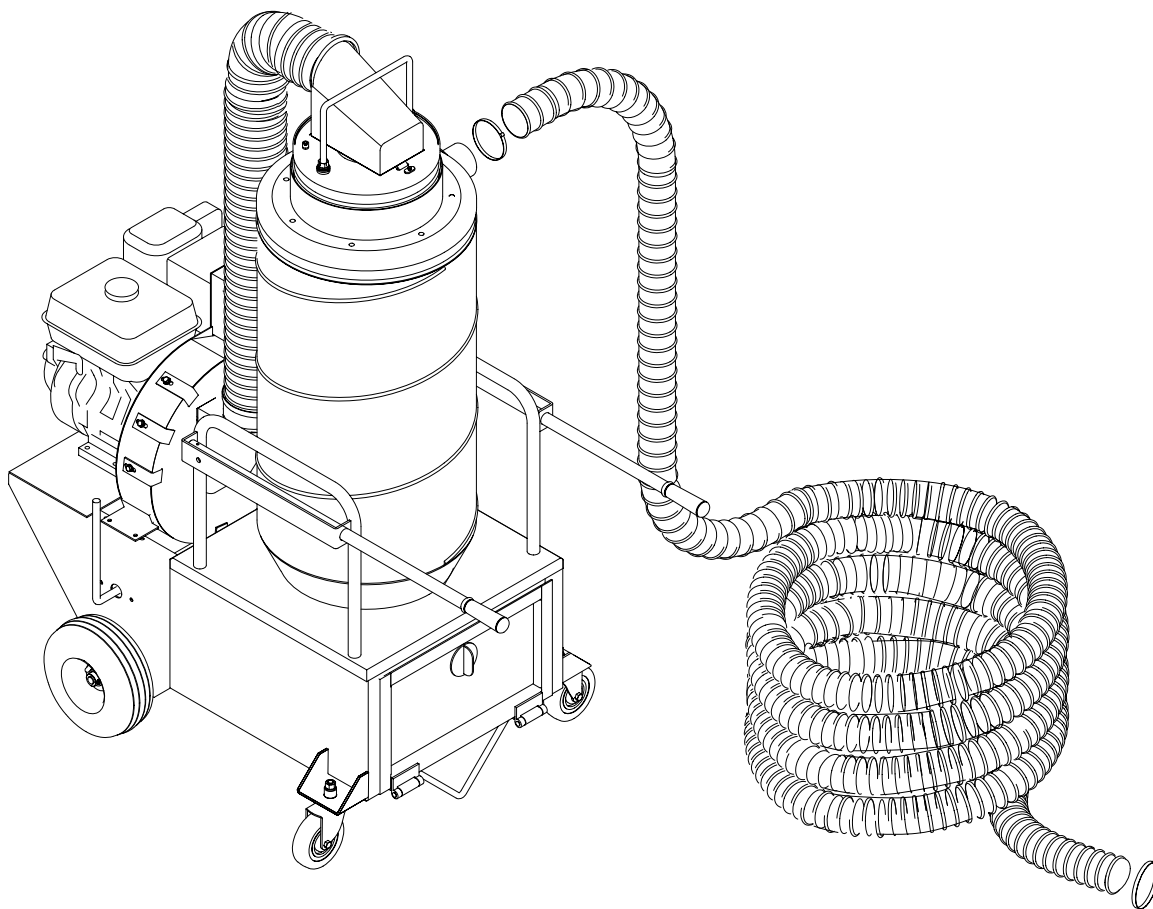


ILLUSTRATION 3 : MOTOR & BLOWER GROUPING


PARTS LISTING - ILLUSTRATION 3 : MOTOR & BLOWER GROUPING			
ITEM#	PART#	DESCRIPTION	QTY.
1	16023	MOTOR, C-FACE 2HP-1PH, 3450RPM	1
2	10055	SCREW, CAP 3/8-16 X 1	4
3	10025	WASHER, FLAT 3/8 SAE	8
4	10811	WASHER, LOCK 3/8	4
5	10404	NUT 3/8-16	4
6	88114	BLOWER HOUSING	1
7	10053	SCREW, CAP 5/16-18 X 3/4	4
8	10213	WASHER, FLAT 5/16 SAE	AS REQ'D.
9	10801	WASHER, LOCK 5/16	4
10	10054	NUT 5/16-18	4
11	10907	SCREW, CAP 3/8-16 X 3/4	4
12	10811	WASHER, LOCK 3/8	4
13	10834	SCREW, CAP 1/4-20 X 1/2	9
14	10038	WASHER, LOCK 1/4	9
15	10602	WASHER, FLAT 1/4 SAE	9
16	89120	CLAMP, BLOWER HOUSING COVER	7
17	88121	EXHAUST PORT, BLOWER	1
18	88140	TRIM, BLOWER HOUSING 60"	1
19	10053	SCREW, CAP 5/16-18 X 3/4	4
20	10801	WASHER, LOCK 5/16	4
21	88116	BLOWER WHEEL	1
22	88117	BLOWER WHEEL HUB	1
23	88115	BLOWER HOUSING COVER	1
24	88145	WIRE HARNESS 10/3 x 30"	1
25	41130	STRAIN RELIEF 1/2NPT X .550-.650"	2
26	10790	CONDUIT LOCK NUT 1/2 NP	3
27	88137	CONN., 1/2NPT CONDUIT ELBOW	1
28	88146	WIRE HARNESS 10/3 x 20FT	1
29	40037	PLUG, LOCKING 20A/250V L6-20P	1
30	16460	STARTER 11-M1-BRF-P23-15-23060	1
31	88136	BRACKET, LOVATO STARTER	1
32	10362	SCREW, MACHINE 8-32 X 3/4	4
33	10461	WASHER, LOCK, INT. TOOTH #8	4
34	10462	NUT 8-32	4
35	10806	SCREW, CAP 5/16-18 X 1	2
36	10213	WASHER, FLAT 5/16 SAE	2
37	10801	WASHER, LOCK 5/16	2
38	10054	NUT 5/16-18	2



ILLUSTRATION 4: HOSE OPTIONS



STANDARD HOSE INCLUDED W/ VACUUM

P/N C65103 - HOSE, FLEX 3"ID x 25FT (PVC HOSE W/ GREY SPIRAL)

P/N 10849 - CLAMP, HOSE, SAE #52, ADJ. TO 3-3/4 (2 REQ'D.)

OPTIONAL HOSE

P/N C65350 - HOSE, FLEX 3"ID x 25FT ANTI-STATIC (POLYURETHANE HOSE W/ GREEN SPIRAL)

P/N 10849 - CLAMP, HOSE, SAE #52, ADJ. TO 3-3/4 (2 REQ'D.)

HOSE FOR USE W/ MASONRY SAW VACUUM SYSTEMS

P/N 88147 - HOSE, FLEX 5"ID x 5FT (PVC HOSE W/ GREY SPIRAL)

P/N 36814 - CLAMP, HOSE, SAE #80, ADJ. TO 5-1/2" (2 REQ'D.)

NOTES:



100 Thomas Johnson Drive, Frederick, MD 21702-4600 USA
Phone (301) 663-1600 • 1-800-638-3326
Fax (301) 663-1607 • 1-800-447-3326
Website: www.edcoinc.com • Email: sales@edcoinc.com

Printed in USA

©2006

Page 11

LIMITED EQUIPMENT WARRANTY

Equipment Development Company, Inc. herein referred to as EDCO warrants that each new unit manufactured by EDCO to be free from defects in material and workmanship in normal use and service for a period of (1) one year (except in the case of the cutter drum assembly on all model concrete asphalt planes, in which case the warranty period shall be 90 days) from date of shipment to the original buyer or equipment rental center owner.

EDCO will, at its option, repair or replace, at the EDCO factory or at a point designated by EDCO any part, which shall appear to the satisfaction of EDCO inspection to have been defective in material or workmanship.

This warranty, does not apply to failure occurring as a result of abuse, misuse, negligent repairs, corrosion, erosion, normal wear and tear, alterations or modifications made to the product without express written consent of EDCO: or failure to follow the recommended operating practices and maintenance procedures as provided in the products operating and maintenance manuals.

This warranty does not obligate EDCO to bear any transportation charges in connection with the replacement or repair of defective parts. This warranty does not obligate EDCO to bear any expense for travel time or of personnel in connection with any service calls.

Accessories or equipment furnished and installed on the product by EDCO but manufactured by others, including but not limited to engines, motors, electrical equipment, transmissions, etc., shall carry the accessory manufacturers' own warranty.

THIS WARRANTY IS IN LIEU OF ALL OTHER WARRANTIES, EXPRESSED OR IMPLIED, OR STATUTORY, INCLUDING ANY WARRANTIES OF MERCHANTABILITY OR OF FITNESS FOR A PARTICULAR PURPOSE.

LIABILITY LIMITATIONS

The remedies of the user set forth under provisions of warranty outlined above are the exclusive and total liability of EDCO with the respect to their sale or the equipment and service furnished hereunder, in connection with the performance or breach thereof, or from the sale, delivery, installation, repair or technical direction covered by or furnished under the sale, whether based on contract, warranty, negligence, indemnity, strict liability, or otherwise shall not exceed the purchase price of the unit of equipment upon which such liability is based.

EDCO will not in any event be liable to the user, any successors in interest or any beneficiary or assignee relating to this sale for any consequential, incidental, indirect, special or punitive damages arising out of this sale or any breach thereof, or any defects on, or failure of, or malfunction of the equipment under this sale based upon loss of use, lost profits or revenue, interest, lost goodwill, work stoppage, impairment of other goods, loss by reason of shutdown or non-operation, increased expenses of operation of the equipment, cost of purchase or replacement power of claims of users or customers of the user for service interruption whether or not such loss or damage is based on contract, warranty, negligence, indemnity, strict liability, or otherwise.

EDCO reserves the right to modify, alter and improve any part or parts without incurring any obligation to replace any part or parts previously sold without such modified, altered or improved part or parts.

No person is authorized to give any other warranty or to assume any additional obligation on EDCO's behalf unless made in writing and signed by an officer of EDCO.

Equipment Development Company, Inc.

USE ONLY GENUINE EDCO PARTS AND ACCESSORIES
For your own safety, the safety of others and the life of your machine

