

REVISED STARTING  
SERIAL # 081210014

# PARTS LIST MANUAL

## MODEL SS26-38K



### Gasoline Powered 38 H.P. Kohler Command Pro Self-Propelled Concrete & Asphalt Saw

#### SAW SET-UP OPTIONS

SKU NUMBER	BLADE GUARD SIZE	BLADE SPEED
31400-30	30 INCH	1900 RPM
31400-26	24 - 26 INCH	2100 RPM
31400-20	18 - 20 INCH	2100 RPM
31400-16	14 - 16 INCH	2750 RPM



100 Thomas Johnson Drive, Frederick, MD 21702-4600 USA  
Phone (301) 663-1600 • 1-800-638-3326  
Fax (301) 663-1607 • 1-800-447-3326  
Website: [www.edcoinc.com](http://www.edcoinc.com)  
Email: [sales@edcoinc.com](mailto:sales@edcoinc.com)

Printed in USA  
©2008

READ AND UNDERSTAND THE OPERATORS INSTRUCTION MANUAL THOROUGHLY BEFORE ATTEMPTING TO OPERATE THIS EQUIPMENT. Death or serious injury could occur if this machine is used improperly.



## SAFETY MESSAGES



The safety instructions are preceded by a graphic alert message of DANGER, WARNING, or CAUTION.



Indicates an imminent hazard which, if not avoided, will result in death or serious injury.



Indicates an imminent hazard which, if not avoided, can result in death or serious injury.



Indicates hazards which, if not avoided, could result in serious injury and or damage to the equipment.

## GASOLINE Powered Equipment



- Do not operate gasoline powered equipment without adequate ventilation. Carbon monoxide is an invisible, odorless gas that can kill.

## ELECTRICAL Powered Equipment



- ELECTRICAL HAZARD** - Be sure equipment is properly grounded. Failure to comply could kill or result in serious injury.



The engine exhaust from this product contains chemicals known to the State of California to cause cancer, birth defects or other reproductive harm.

## GENERAL INSTRUCTIONS



- You must read and understand the operators instruction manual and all other manuals associated with this machine. For your safety and the safety of others around you, it is extremely important to fully understand how to operate this machine in the way it was intended. Different model machines or older/newer versions of the same model may have different parts and controls that you need to understand. If instructions are not readable or available DO NOT USE this machine and contact the factory for a replacement Manual.
- You must be able to physically handle the bulk weight and power of this machine. If not properly controlled this machine can cause death or serious injury.
- Do not operate this machine in an impaired mental state. You must be able to exercise good judgement and reactions to maintain a safe working environment.
- This is a "one person" machine which means only one operator can be operating the machine at any one time. For the safety of others, maintain a safe operating distance to other personnel. Your work area should be defined and appropriately marked so bystanders and coworkers do not stand or walk near this machine and end up seriously injured by flying debris or exposing them to harmful noise or dust.
- This equipment is for Commercial use. Although this is a "one person" machine your work team should understand how to shut this machine off and quickly get medical help if an accident strikes the operator.
- Keep all guards in place during operation. The guards are to provide protection from inadvertent contact with dangerous moving parts, pinch points, or hot surfaces.
- Wear appropriate Personal Protective Equipment (PPE) including safety glasses, safety boots, work gloves, respiratory protection, hearing protection, and head protection. Do not wear loose clothing that can get tangled in moving parts. Failure to do so could result

in dismemberment or death. **Wear an approved respirator when removing hazardous materials or when grinding/cutting dry materials. Some dust particles such as concrete dust can contain silicate particles which can cause silicosis (a very serious lung disease). Contact NIOSH or OSHA for further details. When wet grinding/cutting, avoid contact with the concrete/asphalt slurry which can cause serious skin irritations.**

- You must maintain this machine per the maintenance schedule in the operator manual. Remember before adjusting, servicing, or fueling this machine, disconnect the source of power to the machine by disconnecting the spark plug (Gas models), or by unplugging the electrical power cord (electric models) or air hose (Pneumatic models) AT THE MACHINE so you can assure yourself it remains unplugged while you are working on it. Do not modify this machine. Use only genuine EDCO parts and accessories. Repairs and service should be performed by approved EDCO dealers or authorized technicians.
- You should look carefully around the area before you begin work so you can identify potential hazards such as deck inserts, pipes, columns, openings, electrical cords or outlets, or any other objects protruding from the slab surface.
- This machine has no brain so you must use your own. There is no substitute for safety. The safety decals on the machine are to serve as a reminder for information you must already know before you begin using this machine. Take a moment to reread the safety decals each time you use the machine. If your machine is missing any decals, contact the factory for a replacement (EDCO 1-800-638-3326).

# PARTS LIST MANUAL

## MODEL SS26-38K

### TABLE OF CONTENTS

<u>Section</u>	<u>Page Number</u>
Safety Messages & General Instructions .....	2
How To Order Replacement Parts .....	3
Illustration 1: Frame Grouping .....	4,5
Illustration 2: Lift Grouping .....	6,7
Illustration 3: Water Pump & Blade Guard Grouping .....	8,9
Illustration 4: Guide Bar Assembly .....	10
Illustration 5: Blade Depth Gauge Grouping .....	11
Illustration 6: Arbor Grouping .....	12
Illustration 7: Belt Drive Grouping .....	13
Illustration 8: Transmission Grouping .....	14,15
Illustration 9: Clutch & Rear Axle Grouping .....	16,17
Illustration 10: Engine Mount Grouping .....	18,19
Illustration 11: Engine Grouping .....	20,21
Illustration 12: Instrument Panel Grouping .....	22
Illustration 13: Wiring Diagram .....	23
Limited Equipment Warranty of Sale - Terms & Conditions .....	24 Back Cover

#### HOW TO ORDER REPLACEMENT PARTS

- ☐ To insure product safety and reliability, always use genuine EDCO replacement parts when making repairs to the equipment.
- ☐ When calling for parts, specify the MODEL and SERIAL number of the machine, which can be found on the NAME PLATE. Keep that information in the space provided. In addition to this information, give part number, description, and quantity as listed on the parts list to your parts representative.
- ☐ Please note: Due to improvements and changes in the equipment, the illustrations shown may be different than the actual machine.

#### FILL IN INFORMATION BELOW

Date of Purchase \_\_\_\_\_

Model # \_\_\_\_\_

Serial # \_\_\_\_\_

SKU # \_\_\_\_\_



100 Thomas Johnson Drive, Frederick, MD 21702-4600 USA

Phone (301) 663-1600 • 1-800-638-3326

Fax (301) 663-1607 • 1-800-447-3326

Website: [www.edcoinc.com](http://www.edcoinc.com)

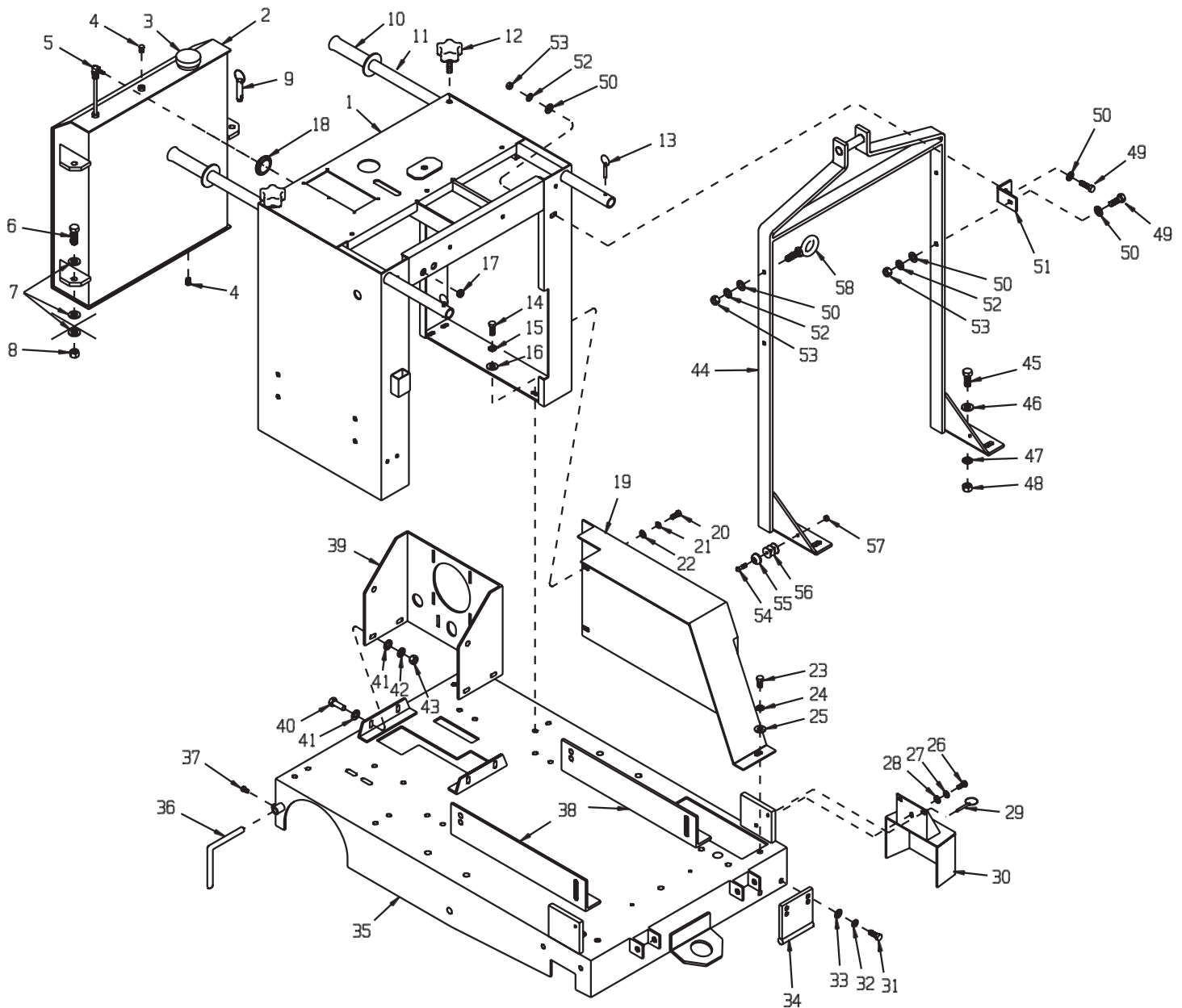
Email: [sales@edcoinc.com](mailto:sales@edcoinc.com)

Printed in USA

©2008

**Page 3**

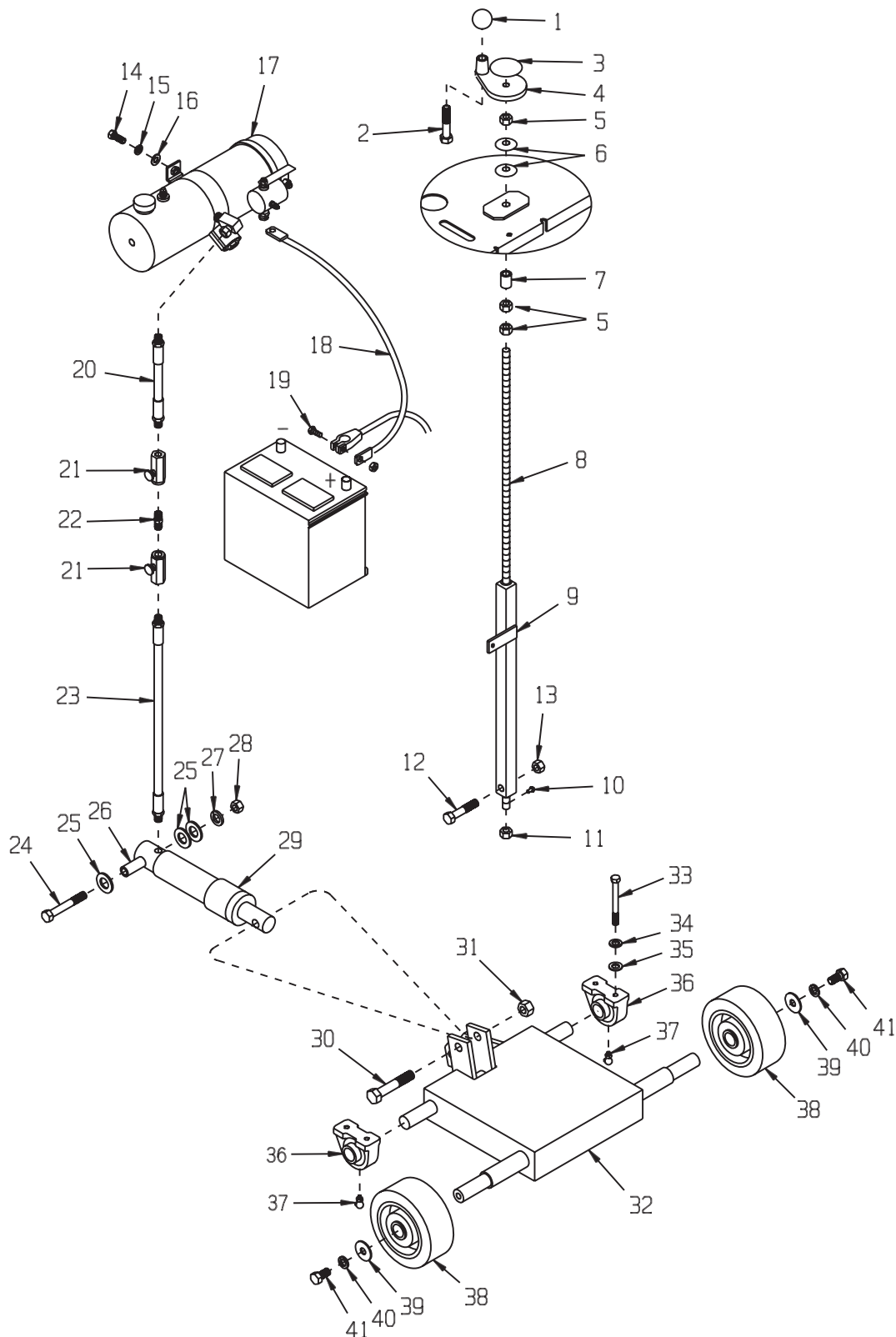
**ILLUSTRATION 1 : FRAME GROUPING**



### PARTS LISTING - ILLUSTRATION 1: FRAME GROUPING

ITEM #	PART #	DESCRIPTION	QTY.	ITEM #	PART #	DESCRIPTION	QTY.
1	50650	CONSOLE	1	30	50704	COVER, ARBOR	1
2	50504	TANK, FUEL 6.4 GAL.	1	31	10055	SCREW, CAP 3/8-16 X 1	2
3	61056	CAP, FUEL TANK	1	32	10811	WASHER, LOCK 3/8	2
4	11650	PIPE PLUG 1/8 NPT (BRASS)	2	33	10025	WASHER, FLAT 3/8 SAE	2
5	50309	TUBE, FUEL PICK-UP 19-3/4"	1	34	50703	GUARD, LOWER PULLEY	1
6	10308	SCREW, CAP 1/2-20 X 1-1/2	2	35	50701	MAIN FRAME	1
7	10312	WASHER, FLAT 1/2 SAE	6	36	51011	GUIDE POINTER, REAR	1
8	10205	NUT, LOCK 1/2-20	2	37	10834	SCREW, CAP 1/4-20 X 1/2	2
9	10125	PIN, DETENT RING 1/2 X 1-1/2 E.L.	1	38	50507	BRACKET, ENGINE MOUNT	2
10	10608	GRIP, HAND 1" MODEL AT	2	39	50508	MOUNT, TRANSMISSION	1
11	50522	HANDLE BAR 36"	2	40	10021	SCREW, CAP 3/8-24 X 1	4
12	51230	KNOB, STAR CLAMPING 3/8-16 X 1"STD.	2	41	10025	WASHER, FLAT 3/8 SAE	8
13	10145	PIN, DETENT RING 3/16 X 1-5/16 E.L.	2	42	10811	WASHER, LOCK 3/8	4
14	10055	SCREW, CAP 3/8-16 X 1	8	43	10014	NUT 3/8-24	4
15	10811	WASHER, LOCK 3/8	8	44	50606K	BAIL, LIFTING, SS26-38K	1
16	10025	WASHER, FLAT 3/8 SAE	8	45	10321	SCREW, CAP 1/2-20 X 1-1/4	4
17	57148	GROMMET 3/8ID X 1/8GRV. X 5/8GD (ID OPENED UP FOR FUEL LINE)	1	46	10312	WASHER, FLAT 1/2 SAE	4
18	51253	GROMMET 1-45/64ID X 1/8GRV. X 2GD	1	47	10045	WASHER, LOCK 1/2	4
19	50702K	COVER, BELT, SS26-38K	1	48	10072	NUT 1/2-20	4
20	10053	SCREW, CAP 5/16-18 X 3/4	3	49	10806	SCREW, CAP 5/16-18 X 1	2
21	10801	WASHER, LOCK 5/16	3	50	10213	WASHER, FLAT 5/16 SAE	5
22	10213	WASHER, FLAT 5/16 SAE	3	51	50711K	BRACE, LIFTING BAIL, SS26-38K	1
23	10907	SCREW, CAP 3/8-16 X 3/4	1	52	10801	WASHER, LOCK 5/16	3
24	10811	WASHER, LOCK 3/8	1	53	10054	NUT 5/16-18	3
25	10025	WASHER, FLAT 3/8 SAE	1	54	10384	SCREW, MACHINE 10-32 X 1	1
26	10907	SCREW, CAP 3/8-16 X 3/4	1	55	52022	BUMPER, RUBBER 1OD x 3/16ID x 7/16H	1
27	10811	WASHER, LOCK 3/8	1	56	40378-S1	WASHER, FENDER 1/4ID X 1-1/4OD S.S.	3
28	10025	WASHER, FLAT 3/8 SAE	1	57	10832	NUT, KEPS 10-32	1
29	49016	PIN, DETENT RING 1/4 X 1 E.L.	1	58	11593	BOLT, EYE SHOULDER 5/16-18 X 1-1/8	1

# ILLUSTRATION 2 : LIFT GROUPING

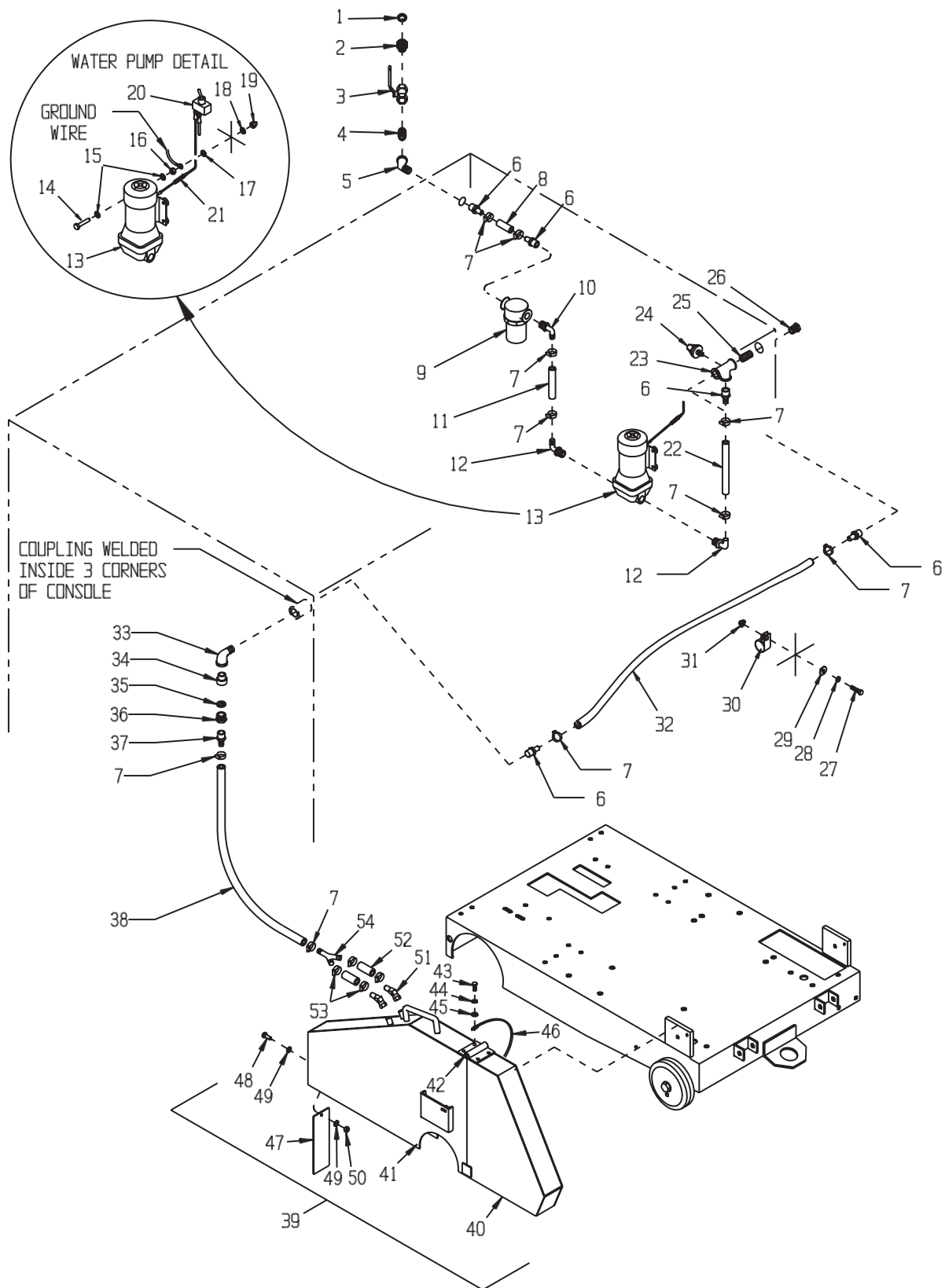


**PARTS LISTING - ILLUSTRATION 2: LIFT GROUPING**

ITEM #	PART #	DESCRIPTION	QTY.
1	14023	KNOB, BALL 1-3/8 W/ 1/2-13THD, BLK.	1
2	10323	SCREW, CAP 1/2-13 X 2-1/2	1
3	80007	DECAL, DEPTH STOP - DN/UP 2.5"	1
4	57016	HANDWHEEL, SMALL W/ 1/2-13 THD.	1
5	10417	NUT 1/2-13	3
6	10426	WASHER, BELLEVILLE 1/2ID X 3/64THK	2
7	50526	SPACER, STEEL 1/2"ID X 1"LG	1
8	50409	ROD, ALLTHREAD LINKAGE 1/2-13 X 22"	1
9	50412	LINKAGE LOWER TUBE	1
10	10127	SCREW, DRIVE 1/8 X 1/4"L	1
11	50455	NUT 1/2-13, SPECIAL	1
12	10343	SCREW, CAP 1/2-20 X 2-1/2	1
13	10205	NUT, LOCK 1/2-20	1
14	10055	SCREW, CAP 3/8-16 X 1	2
15	10811	WASHER, LOCK 3/8	2
16	10025	WASHER, FLAT 3/8 SAE	2
17	50620	PUMP, HYDRAULIC ELEC., 12VDC M-319	1
18	50117R	CABLE, EYE-EYE 4GA. X 24" (RED)	1
19	10342	SCREW, CAP 5/16-18 X 1-1/2	1
20	57078	HOSE, HYDRAULIC 1/4NPT X 6-1/2"LOA	1
21	61116	VALVE, FLOW CONTROL	2
22	10717	NIPPLE, HEX 1/4 NPT (BRASS)	1
23	50527	HOSE, HYDRAULIC 1/4NPT X 15-1/2"LOA	1
24	10324	SCREW, CAP 1/2-13 X 3-1/2	1
25	10009	WASHER, FLAT 3/4 SAE	3
26	61021	SPACER, CYL.REAR 1/2"ID X 2-1/4	1
27	10045	WASHER, LOCK 1/2	1
28	10417	NUT 1/2-13	1
29	61020	CYLINDER, HYDRAULIC	1
30	10326	SCREW, CAP 5/8-11 X 3	1
31	10809	NUT, LOCK 5/8-11	1
32	50502	FORK	1
33	10868	SCREW, CAP 3/8-16 X 3-1/2	4
34	10811	WASHER, LOCK 3/8	4
35	10025	WASHER, FLAT 3/8 SAE	4
36	50222	BEARING, BALL 1" TPB	2
37	10961	FITTING, GREASE 1/4-28 X 90°	2
38	50439	WHEEL 6 X 2-1/2 X 1"BRG., RED POLY	2
39	10433	WASHER, BELLEVILLE 1/2ID X 3/32THK	2
40	10045	WASHER, LOCK 1/2	2
41	10914	SCREW, CAP 1/2-13 X 1	2



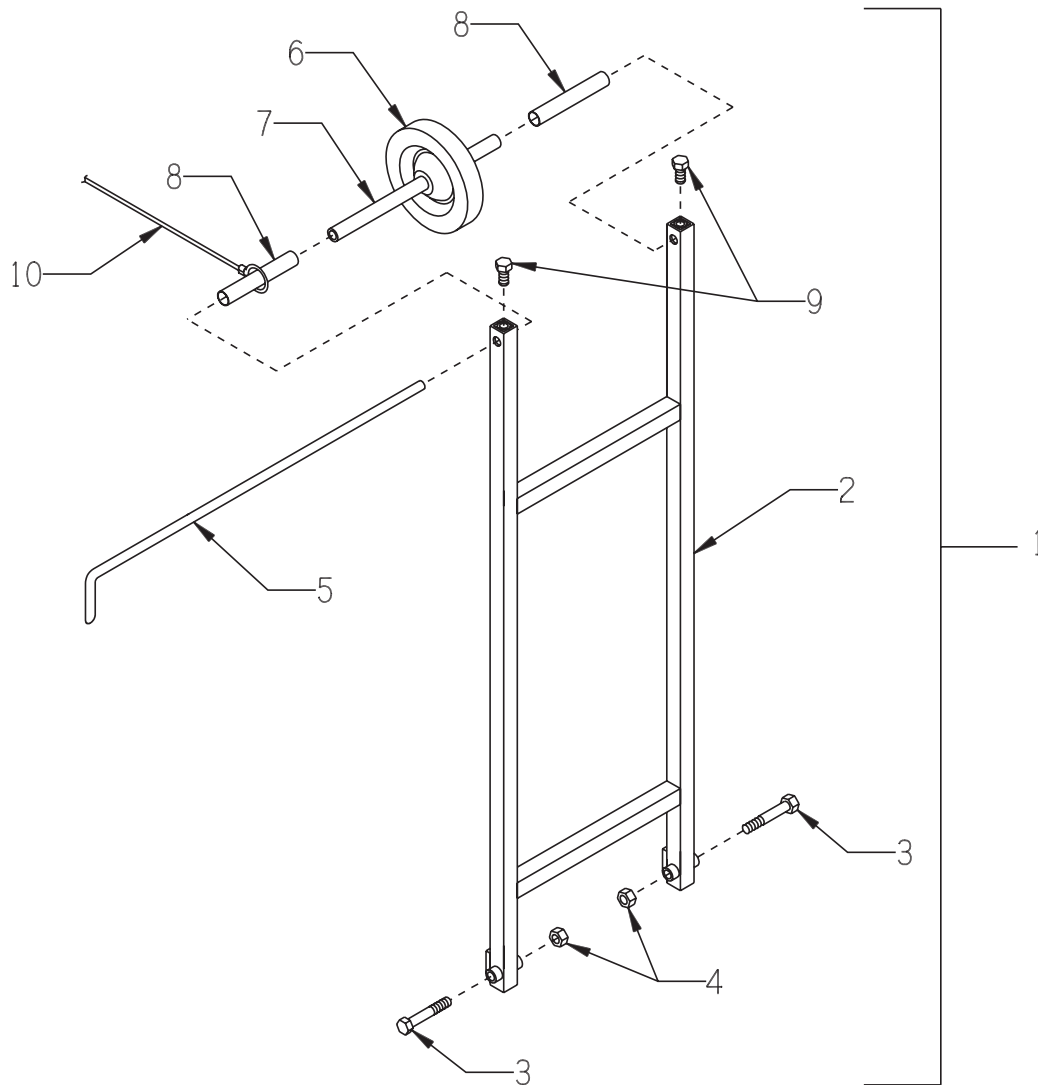
### ILLUSTRATION 3 : WATER PUMP & BLADE GUARD GROUPING



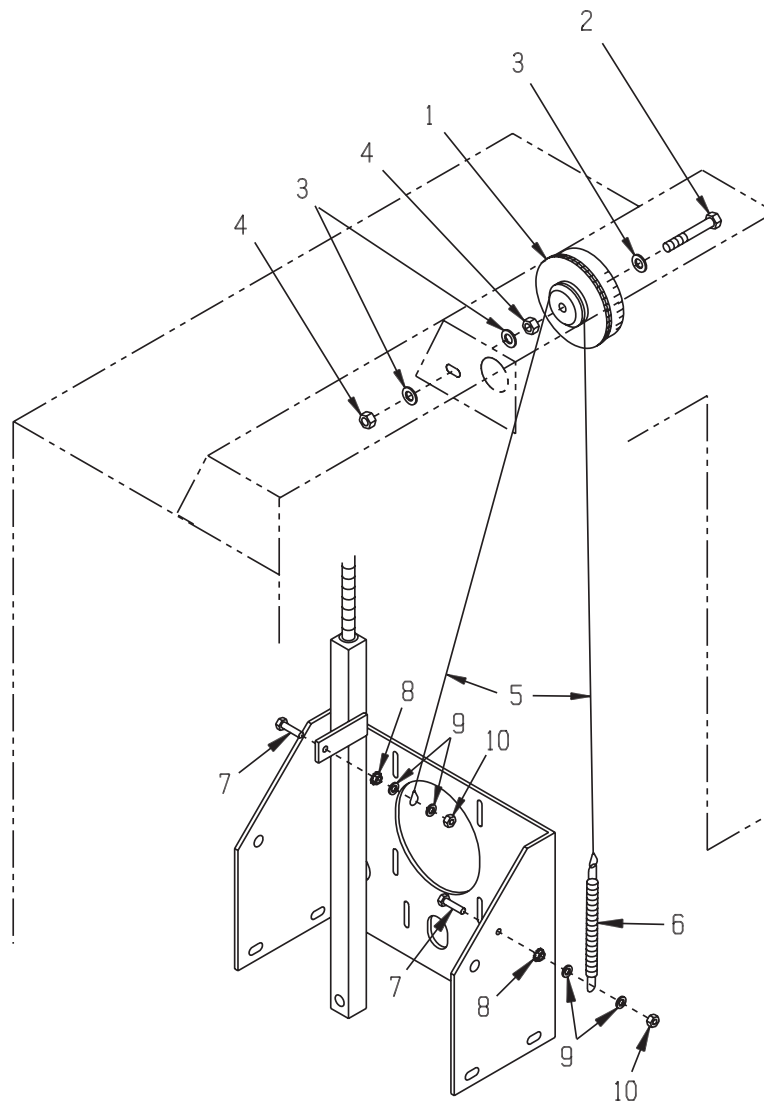


**PARTS LISTING - ILLUSTRATION 3: WATER PUMP & BLADE GUARD GROUPING**

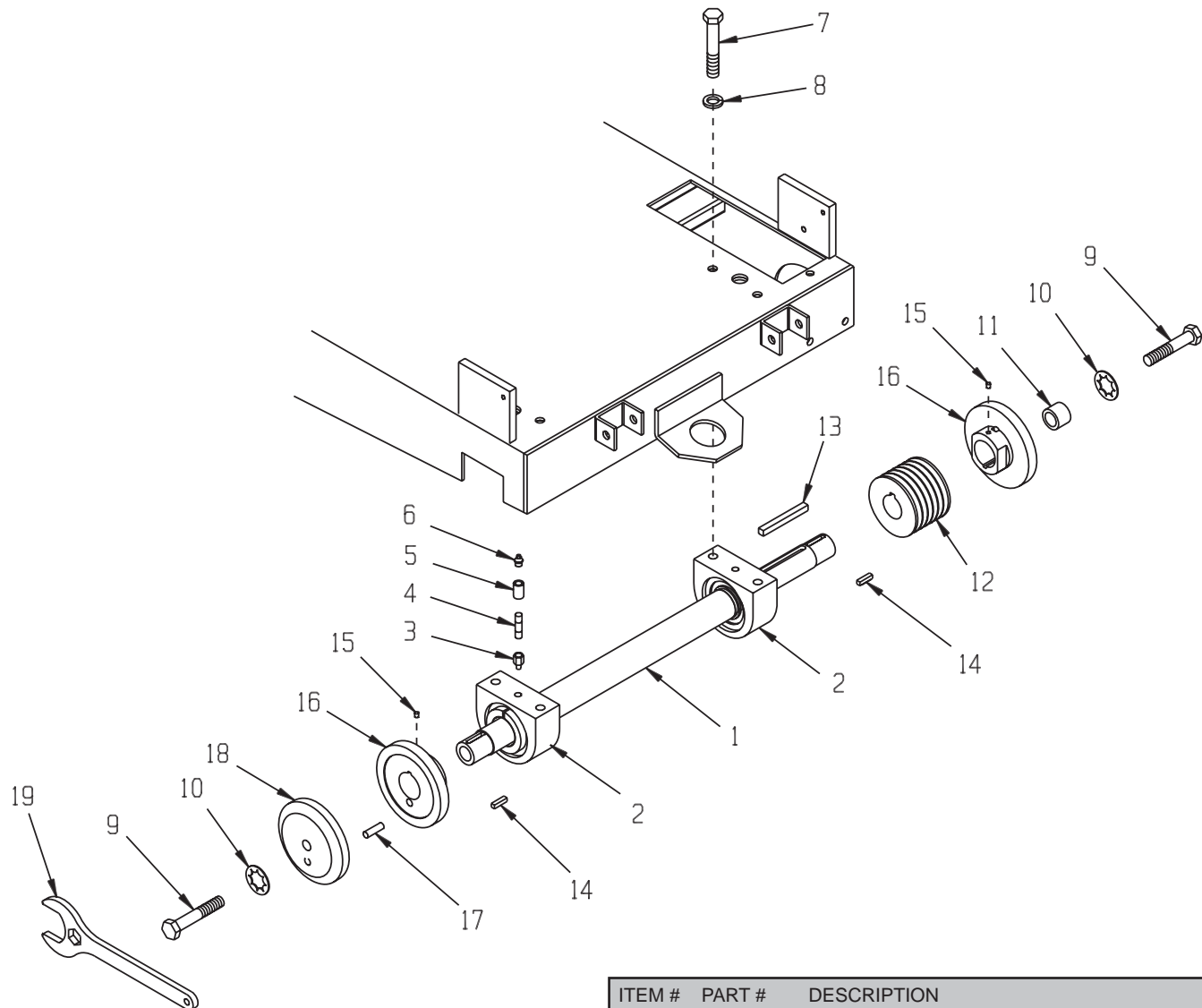
ITEM #	PART #	DESCRIPTION	QTY.	ITEM #	PART #	DESCRIPTION	QTY.
1	10070	WASHER, HOSE 3/4	1	34	80021	CONN., SWVL FEM. 3/4HOSE X 1/2MPT (INCLUDES HOSE WASHER, ITEM #35)	1
2	80021	CONN., SWVL FEM. 3/4HOSE X 1/2MPT (INCLUDES HOSE WASHER, ITEM #1)	1	35	10070	WASHER, HOSE 3/4	1
3	10711	VALVE, BALL 1/2 FPT	1	36	10780	CONN., MALE 3/4NH X 1/2FPT (BRASS)	1
4	10679	NIPPLE, HEX 1/2NPT (BRASS)	1	37	80061	BARB, PUSH-ON 1/2HOSE X 1/2MPT	1
5	10734	ELBOW, STREET 1/2NPT X 45 (BLK)	1	38		HOSE 1/2"ID 22"L FOR 30" GUARD 24"L FOR 24-26" GUARD 26"L FOR 14-16" & 18-20" GUARDS	1
6	10680	BARB, 1/2HOSE X 1/2MPT (PLSTC)	5		57183 57140		
7	50069	CLAMP, HOSE, SAE #6, ADJ. TO 13/16	10	39		BLADE GUARD ASSY. (ITEMS 40-54) 30" BLADE 24"- 26" BLADE (STANDARD) 18"- 20" BLADE 14"- 16" BLADE	1
8	50532	HOSE, WATER 1/2"ID X 2"L	1		50735A 57449A 57450A 57451A		
9	57170	STRAINER, NYLON T-STYLE 1/2FPT	1	40		GUARD FRONT ONLY 30" BLADE 24"- 26" BLADE 18"- 20" BLADE 14"- 16" BLADE	1
10	50471	BARB ELBOW 90, 1/2HOSE X 1/2MPT	1		50735F 57449F 57450F 57451F		
11	57168	HOSE, WATER 1/2"ID X 4-7/8"L	1	41		GUARD REAR ONLY 30" BLADE 24"- 26" BLADE 18"- 20" BLADE 14"- 16" BLADE	1
12	50469	PUMP QUAD PORT BARB ELBOW 1/2" (INCLUDED W/ PUMP)	2		50735R 57449R 57450R 57451R		
13	50470	PUMP, WATER, 12VDC, FLOJET QUAD	1	42	11617	HINGE, BUTT 3 X 3 X 7GA. S.S.	1
14	10905	SCREW, CAP 1/4-20 X 1-1/4	4	43	10834	SCREW, CAP 1/4-20 X 1/2	4
15	10602	WASHER, FLAT 1/4 SAE	8	44	10038	WASHER, LOCK 1/4	4
16	10015	NUT, LOCK 1/4-20	4	45	10602	WASHER, FLAT 1/4 SAE (USED ON PIN & CABLE ASSY. ONLY)	1
17	10451	WASHER, LOCK, INT. TOOTH 1/4" (USED ON GROUND ONLY)	1	46		PIN & CABLE ASSY. 30" BLADE GUARD 24"- 26" BLADE GUARD 18"- 20" BLADE GUARD 14"- 16" BLADE GUARD	1
18	10038	WASHER, LOCK 1/4	4		57482 57483 57484 57485		
19	10876	NUT, ACORN 1/4-20	4	47	41115	FLAP, SPLASH 2-1/2 X 8	1
20	10633	SWITCH, TOGGLE SPST (REFER TO ILLUS. 13, ITEM #3)	1	48	10018	SCREW, CAP 1/4-20 X 3/4	1
21	50447	FUSE & HOLDER, 10 AMP	1	49	10602	WASHER, FLAT 1/4 SAE	2
22	57176	HOSE, WATER 1/2"ID X 7-1/4"L	1	50	10015	NUT, LOCK 1/4-20	1
23	50525	PIPE TEE, WTR. PRES. SW. 1/2NPT	1	51	10710	FITTING, SWIVEL 45, 1/4NPT, HYD.	2
24	50215	SWITCH, PRES., COIL IGN., N.O.	1	52	50532	HOSE, WATER 1/2"ID X 2"L	2
25	10728	PIPE NIPPLE, CLOSE 1/2NPT (BLK)	1	53	50069	CLAMP, HOSE, SAE #6, ADJ. TO 13/16	4
26	50552	PIPE PLUG 1/2 NPT (BRASS)	1	54	10682	BARBED FITTING, "Y" 1/2"HOSE	1
27	10031	SCREW, CAP 1/4-20 X 1	1				
28	10038	WASHER, LOCK 1/4	1				
29	10602	WASHER, FLAT 1/4 SAE	1				
30	11565	CLAMP, LOOM, 5/8" (SAE SIZE 10)	1				
31	10861	NUT, KEPS 1/4-20	1				
32	10655	HOSE, WATER 1/2"ID X 20"L	1				
33	10724	ELBOW, STREET 1/2NPT X 90 (BLK)	1				

**ILLUSTRATION 4 : GUIDE BAR ASSEMBLY**

ITEM #	PART #	DESCRIPTION	QTY.
1	57119A	GUIDE BAR ASSEMBLY (INCLUDES ITEMS 2 THRU 9)	1
2	57119	GUIDE BAR	1
3	10202	SCREW, CAP 1/2-20 X 3	2
4	10154	NUT, HEX NYLON LOCK 1/2-20	2
5	50514	POINTER, FRONT 24-1/2"	1
6	50536	WHEEL 5 X 1-1/2 X 3/4"BORE	1
7	57120	AXLE TUBE, GUIDE WHEEL	1
8	57171	SPACER TUBE 5-1/16, GUIDE BAR WHEEL	2
9	10304	SCREW, CAP 1/2-20 X 1	2
10	50555	ROPE, GUIDE BAR (NOT INCLUDED W/ GUIDE BAR ASSY.)	1

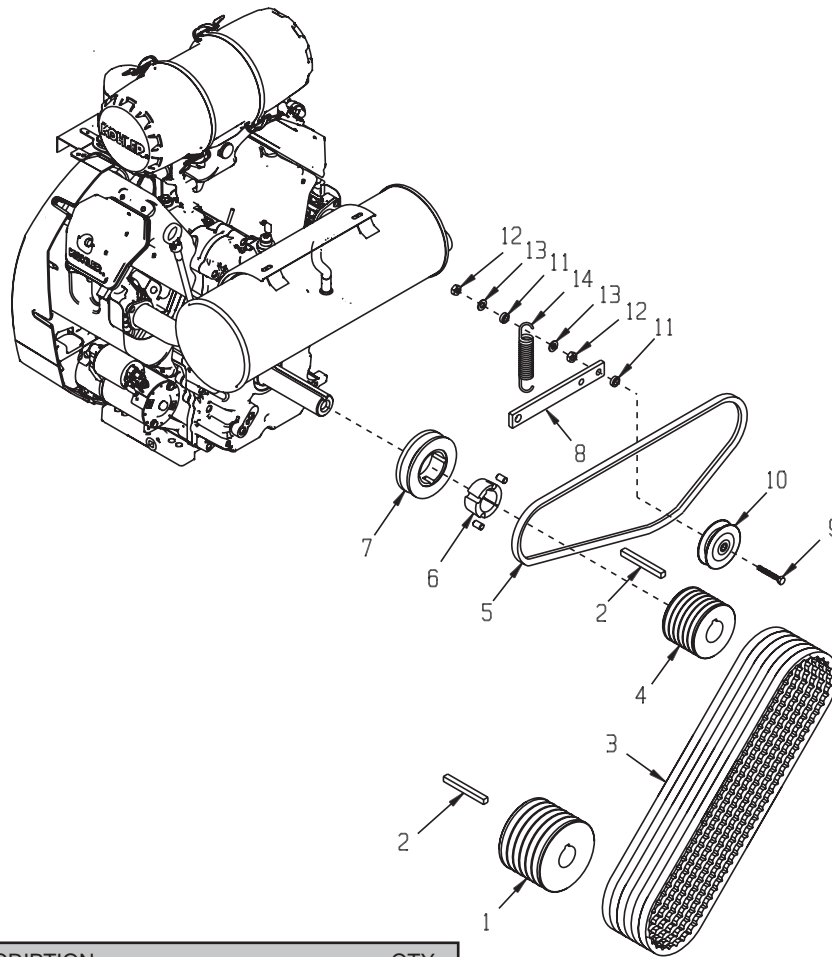
**ILLUSTRATION 5 : BLADE DEPTH GAUGE GROUPING**

ITEM #	PART #	DESCRIPTION	QTY.
1	57132	WHEEL, DEPTH GAUGE	1
2	10336	SCREW, CAP 3/8-24 X 2-1/4	1
3	10025	WASHER, FLAT 3/8 SAE	3
4	10004	NUT, LOCK 3/8-24	2
5	57143	CABLE, DEPTH GAUGE 3/32 X 34"L	1
6	3636	SPRING, EXT. 6"L	1
7	10031	SCREW, CAP 1/4-20 X 1	2
8	10861	NUT, KEPS 1/4-20	2
9	10602	WASHER, FLAT 1/4 SAE	4
10	10150	NUT, HEX NYLON LOCK 1/4-20	2

**ILLUSTRATION 6 : ARBOR GROUPING**

ITEM #	PART #	DESCRIPTION	QTY.
1	50720	ARBOR SHAFT 28-1/8"L	1
2	50460	BEARING, BALL 1-1/2" TPB	2
3	50541	ADAPTER, GREASE FITTING 1/8PT X 1/4-28	2
4	10798	PIPE NIPPLE 1/8NPT X 1-1/2 (BLK)	2
5	10585	PIPE COUPLING 1/8 NPT (BLK)	2
6	10006	FITTING, GREASE 1/8 NPT X 45D	2
7	10499	SCREW, CAP 1/2-13 X 3	4
8	10045	WASHER, LOCK 1/2	4
9	10359	SCREW, CAP 5/8-11 X 3-1/4	2
10	10457	WASHER, LOCK, INT. TOOTH 5/8"	2
11	10096	COLLAR, LOCKING 5/8"ID	1

ITEM #	PART #	DESCRIPTION	QTY.
12	10511	SHEAVE (SEE CHART NEXT PAGE) 3.65"OD X 6GR.3V X 1-7/16"B	1
	10512	4.80"OD X 6GR.3V X 1-7/16"B	
	50724	5.30"OD X 6GR.3V X SK	
	50725	BUSHING, SHEAVE SK X 1-7/16"B	
13	10074	KEY 3/8SQ X 3-1/2	1
14	10174	KEY 1/4SQ X 1	2
15	10161	SCREW, SET 1/4-28 X 5/16	2
16	50721	ARBOR BACKING PLATE 5" (14"- 26" BLADE SET-UP)	2
	50734	6" (30" BLADE SET-UP)	
17	50722	PIN, SHEAR PROOF 3/8 X 1-1/2	1
18	57403	ARBOR BLADE CAP 5" (14"- 26" BLADE SET-UP)	1
	57405	6" (30" BLADE SET-UP)	
19	57406	WRENCH, ARBOR, 2" & 15/16"	2

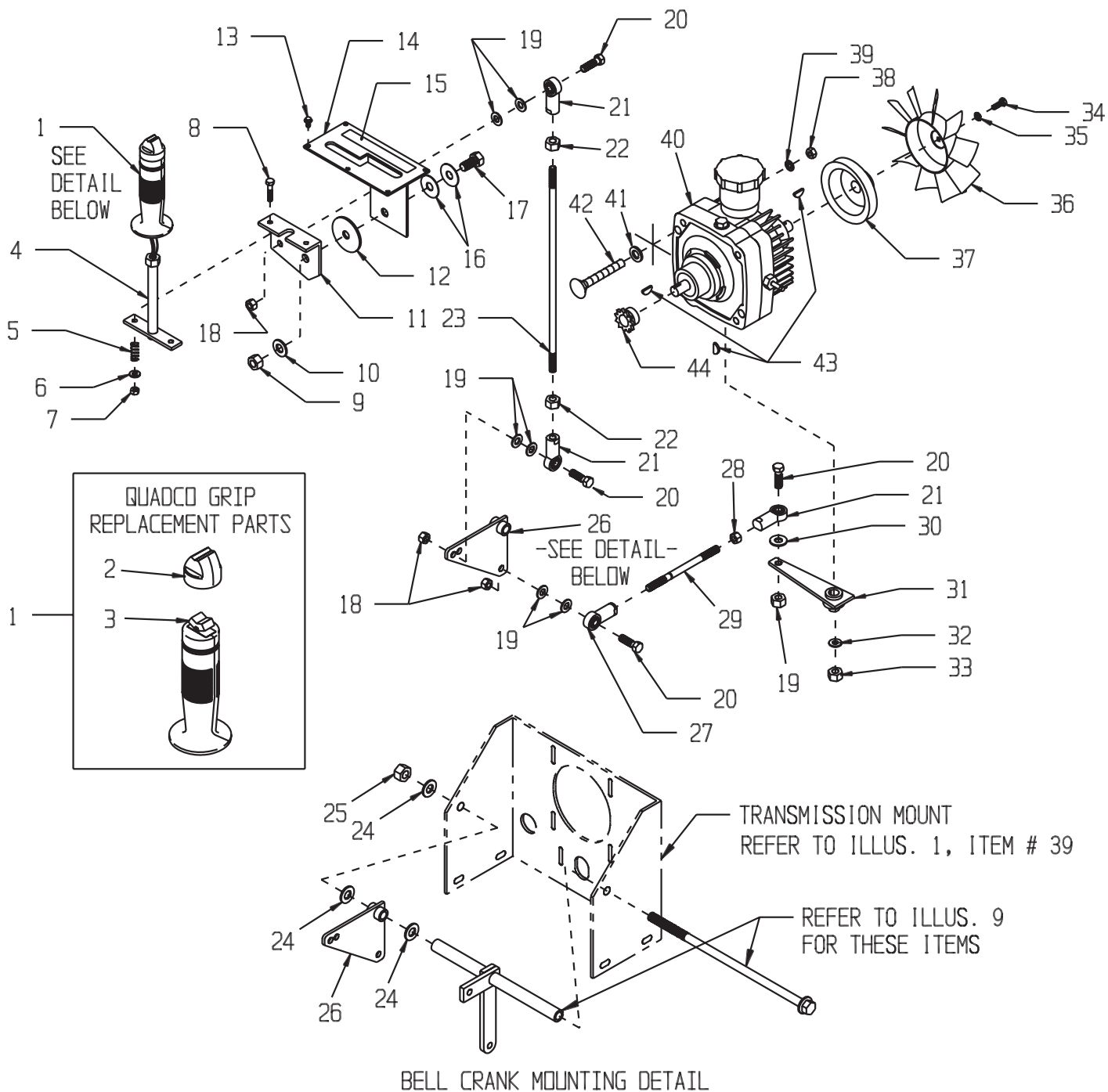
**ILLUSTRATION 7 : BELT DRIVE GROUPING**

ITEM #	PART #	DESCRIPTION	QTY.	ITEM #	PART #	DESCRIPTION	QTY.
1	10511	ARBOR SHEAVE (SEE CHART)	1	7	10528	SHEAVE 4.15"OD X 1GR.AB X TPR-LOCK	1
	10512	3.65"OD X 6GR.3V X 1-7/16"B		8	50544	ARM, IDLER	1
	50724	4.80"OD X 6GR.3V X 1-7/16"B		9	10393	SCREW, CAP 3/8-24 X 2-1/2	1
	50725	5.30"OD X 6GR.3V X SK	1	10	50115	IDLER PULLEY 3"OD X 1GR.AB X 3/8"B	1
		BUSHING, SHEAVE SK X 1-7/16"B		11	10113	SPACER, STEEL 9/16OD X 3/8ID X 7/32	2
2	10074	KEY 3/8SQ X 3-1/2	2	12	10004	NUT, LOCK 3/8-24	2
3	10228	BELT 3VX-450	6	13	10025	WASHER, FLAT 3/8 SAE	2
4	10510	SHEAVE 2.8"OD X 6GR.3V X 1-7/16"B	1	14	50074	SPRING, EXT. 1"OD X 3-15/16	1
5	10284	BELT A-55	1				
6	10531	BUSHING, TAPER-LOCK 1610 1-7/16"B	1				

**SS26-38K BELT DRIVE SPECIFICATION CHART**

BLADE DIAMETER	BLADE SPEED (RPM)	ARBOR SHEAVE DIA.	ENGINE SHEAVE DIA.	ARBOR BELT ( 6 REQ'D.)	TRANS. BELT
14" – 16"	2750	3.65"	2.80"	3VX450	A55
18" – 20"	2100	4.80"			
24" – 26"	2100	4.80"			
30"	1900	5.30"			

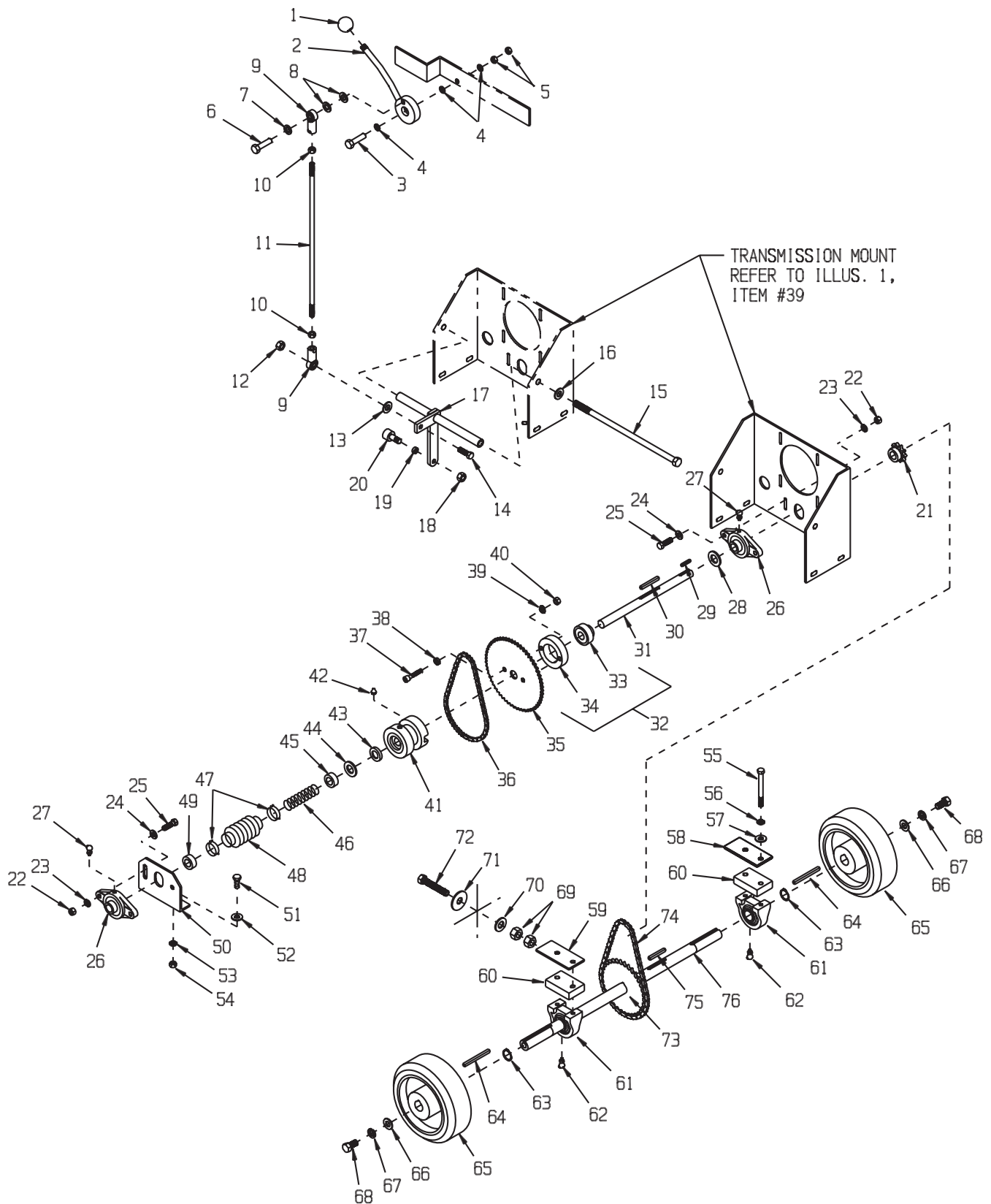
# ILLUSTRATION 8 : TRANSMISSION GROUPING



PARTS LISTING - ILLUSTRATION 8: TRANSMISSION GROUPING			
ITEM #	PART #	DESCRIPTION	QTY.
1	50610	GRIP W/ ROCKER SWITCH, QUADCO G301	1
2	50615	CAP/RUBBER BOOT, "QUADCO" GRIP (INCUEDED WITH ITEM #1)	1
3	50614	SWITCH, ROCKER, C&K #7105 (INCUEDED WITH ITEM #1)	1
4	50608	LEVER, DRIVE	1
5	57471	SPRING, COMP. .468"OD X 1.25"FL	2
6	10602	WASHER, FLAT 1/4 SAE	2
7	10015	NUT, LOCK 1/4-20	2
8	10315	SCREW, CAP 1/4-20 X 1-1/2	2
9	10205	NUT, LOCK 1/2-20	1
10	10312	WASHER, FLAT 1/2 SAE	1
11	50613	PLATE, DRIVE LEVER PRESSURE	1
12	50428	WASHER, FIBER 2-1/4OD X 1/2ID X 1/8	1
13	10877	SCREW, CAP STSHW 10-24 X 1/2	5
14	50607	GATE, DRIVE LEVER	1
15	-----	DECAL, DRIVE CONTROL	
16	10426	WASHER, BELLEVILLE 1/2ID X 3/64THK	2
17	10321	SCREW, CAP 1/2-20 X 1-1/4	1
18	10004	NUT, LOCK 3/8-24	4
19	10025	WASHER, FLAT 3/8 SAE	6
20	10309	SCREW, CAP 3/8-24 X 1-1/4 PLATED	4
21	10919	ROD END, FEMALE 3/8-24 R.H. THREAD	3
22	10014	NUT 3/8-24	2
23	57124	LINKAGE, ROD 3/8 X 14-5/8"L	1
24	10312	WASHER, FLAT 1/2 SAE	3
25	10407	NUT, LOCK 1/2-13	1
26	57123	BELLCRANK, DRIVE CONTROL	1
27	10919L	ROD END, FEMALE 3/8-24 L.H. THREAD	1
28	10014	NUT 3/8-24	1
29	50420	LINKAGE, ROD 3/8 X 5-3/4"L	1
30	10025	WASHER, FLAT 3/8 SAE	1
31	50422	TRANS. CONTROL ARM	1
32	10811	WASHER, LOCK 3/8	1
33	10404	NUT 3/8-16	1
34	10018	SCREW, CAP 1/4-20 X 3/4	1
35	10038	WASHER, LOCK 1/4	1
36	50266	FAN BLADE W/ PLATE 7", TRANSMISSION	1
37	50062	SHEAVE, TRANS. 4"OD X 1GR. X .671"B	1
38	10404	NUT 3/8-16	4
39	10811	WASHER, LOCK 3/8	4
40	50061	TRANSMISSION, HYDROSTATIC	1
41	10040	WASHER, GARRET 17/32 X 1 X .054	4
42	10909	BOLT, CARRIAGE 3/8-16 X 3 FULL THD.	4
43	50071	KEY, WOODRUFF 1/8 X 1/2 (#404)	3
44	50048	SPROCKET #3511 X .67"BORE	1



# ILLUSTRATION 9 : CLUTCH & REAR AXLE GROUPING

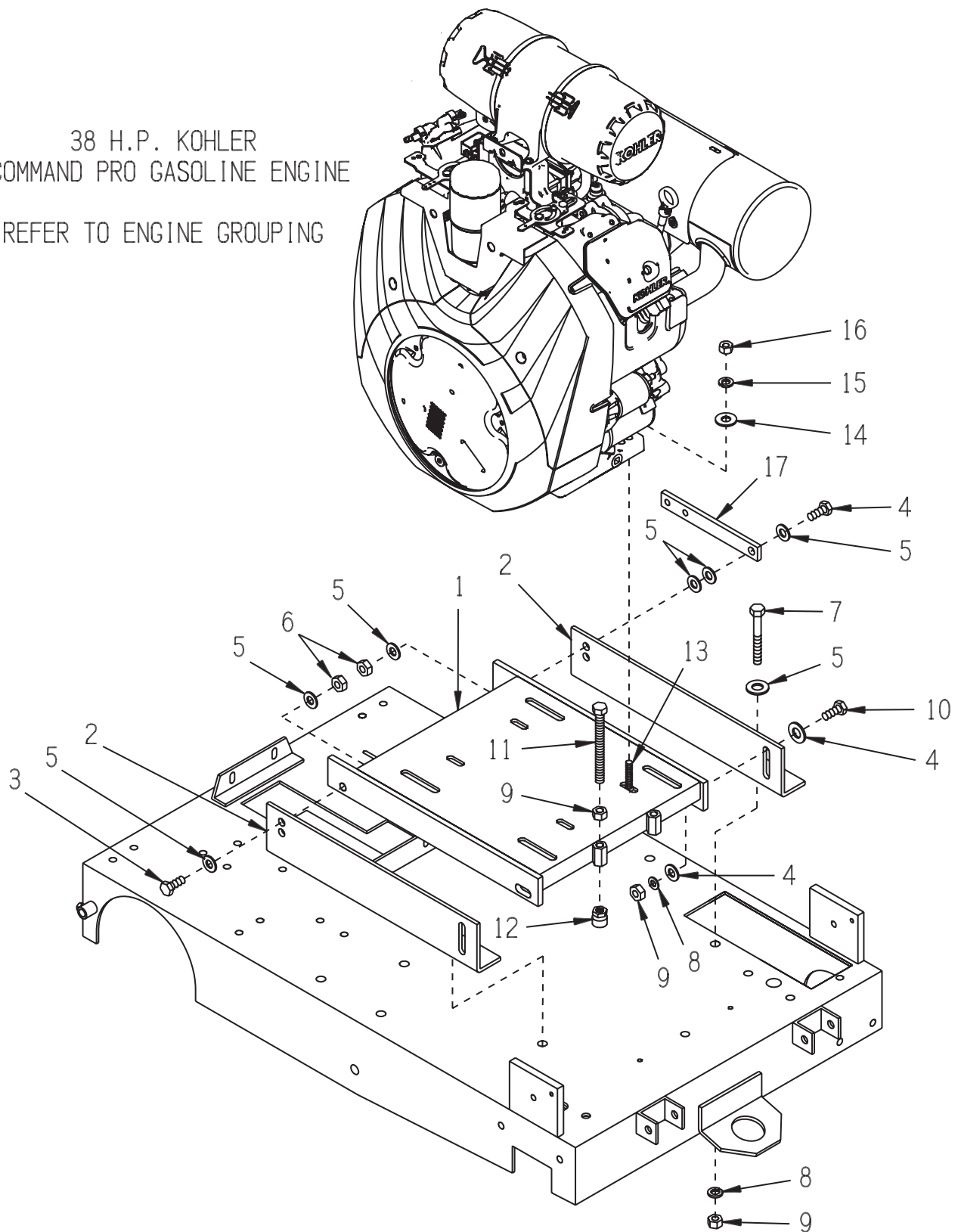


**PARTS LISTING - ILLUSTRATION 9: CLUTCH & REAR AXLE GROUPING**

ITEM #	PART #	DESCRIPTION	QTY.	ITEM #	PART #	DESCRIPTION	QTY.
1	14023	KNOB, BALL 1-3/8 W/ 1/2-13THD	1	39	10811	WASHER, LOCK 3/8	2
2	50611	LEVER, CLUTCH	1	40	10014	NUT 3/8-24	2
3	10816	SCREW, CAP 3/8-24 X 1-1/2	1	41	57042	CLUTCH, DOG BLOCK	1
4	10025	WASHER, FLAT 3/8 SAE	3	42	10808	FITTING, GREASE 1/4-28 STRAIGHT	1
5	10004	NUT, LOCK 3/8-24	2	43	3695	SEAL, OIL .750 X 1.375 X .250	1
6	10309	SCREW, CAP 3/8-24 X 1-1/4	1	44	10009	WASHER, FLAT 3/4 SAE	1
7	10811	WASHER, LOCK 3/8	1	45	57044	CLUTCH SPRING CUP	1
8	10025	WASHER, FLAT 3/8 SAE	2	46	10922	SPRING, COMP. 1"OD X 3.75"FL	1
9	10919	ROD END, FEMALE 3/8-24 R.H. THD	2	47	10768	CLAMP, HOSE SAE #16 ADJ. TO 1-1/2	2
10	10014	NUT 3/8-24	2	48	10930	BELLOWS 1-1/4ID X 2-3/8EL X 1-3/4RL	1
11	50612	LINKAGE, ROD 3/8 X 17"L	1	49	10428	COLLAR, LOCKING 3/4"ID	1
12	10004	NUT, LOCK 3/8-24	1	50	50509	MOUNT, JACKSHAFT BEARING	1
13	10025	WASHER, FLAT 3/8 SAE	1	51	10021	SCREW, CAP 3/8-24 X 1	4
14	10309	SCREW, CAP 3/8-24 X 1-1/4	1	52	10025	WASHER, FLAT 3/8 SAE	4
15	10421	SCREW, CAP 1/2-13 X 13	1	53	10811	WASHER, LOCK 3/8	4
16	10312	WASHER, FLAT 1/2 SAE	1	54	10014	NUT 3/8-24	4
17	50450	BELL CRANK, CLUTCH	1	55	10318	SCREW, CAP 3/8-16 X 3-3/4	4
18	10004	NUT, LOCK 3/8-24	1	56	10811	WASHER, LOCK 3/8	4
19	10113	SPACER, STL 9/16OD X 3/8ID X 7/32	1	57	10025	WASHER, FLAT 3/8 SAE	4
20	10924	CAM FLWR. BRG. 3/4" X 3/8-24THD	1	58	50511	SHIM, AXLE BEARING	1
21	50436	SPROCKET #40B10 X 3/4"BORE	4	59	50512	SHIM, AXLE BEARING W/ ADJ.	1
22	10014	NUT 3/8-24	4	60	50510	SPACER, BEARING	2
23	10811	WASHER, LOCK 3/8	4	61	50222	BEARING, BALL 1" TPB	2
24	10025	WASHER, FLAT 3/8 SAE	4	62	10960	FITTING, GREASE 1/4-28 X 45°	2
25	10309	SCREW, CAP 3/8-24 X 1-1/4	4	63	10906	RETAINING RING, EXT. 1"	2
26	50049	BEARING, BALL 3/4" 2-HOLE FLNG	2	64	10132	KEY 1/4SQ X 3	2
27	10960	FITTING, GREASE 1/4-28 X 45°	2	65	61065	WHEEL 8 X 3 X 1"BORE	2
28	10009	WASHER, FLAT 3/4 SAE	1	66	10433	WASHER, BELLEVILLE 1/2ID X 3/32THK	2
29	50523	KEY 3/16SQ X 1-1/8	1	67	10045	WASHER, LOCK 1/2	2
30	10307	KEY 1/4SQ X 2-1/4	1	68	10914	SCREW, CAP 1/2-13 X 1	2
31	50518	JACKSHAFT, CLUTCH 11-1/2"	1	69	10417	NUT 1/2-13	2
32	57038A	BEARING & CARRIER ASSY. ,CLTCH	1	70	10312	WASHER, FLAT 1/2 SAE	1
33	57038	BEARING, BALL 3/4ID X 1.8504"OD	1	71	10433	WASHER, BELLEVILLE 1/2ID X 3/32THK	1
34	57039	CARRIER, CLUTCH BEARING	1	72	10340	BOLT, TAP 1/2-13 X 3 (FULL THRD.)	1
35	50476	SPROCKET, CLUTCH #35A60	1	73	61126	SPROCKET #40B34 X 1"BORE	1
36	64032	CHAIN #35 X 24-1/2"LOA	1	74	50542	CHAIN #40 X 25"LOA	1
37	10354	SCREW, SKT. HD. 3/8-24 X 1-3/4	2	75	10115	KEY 1/4SQ X 2	1
38	10113	SPACER, STL 9/16OD X 3/8ID X 7/32	2	76	50519	AXLE SHAFT 1"DIA. X 25"L	1

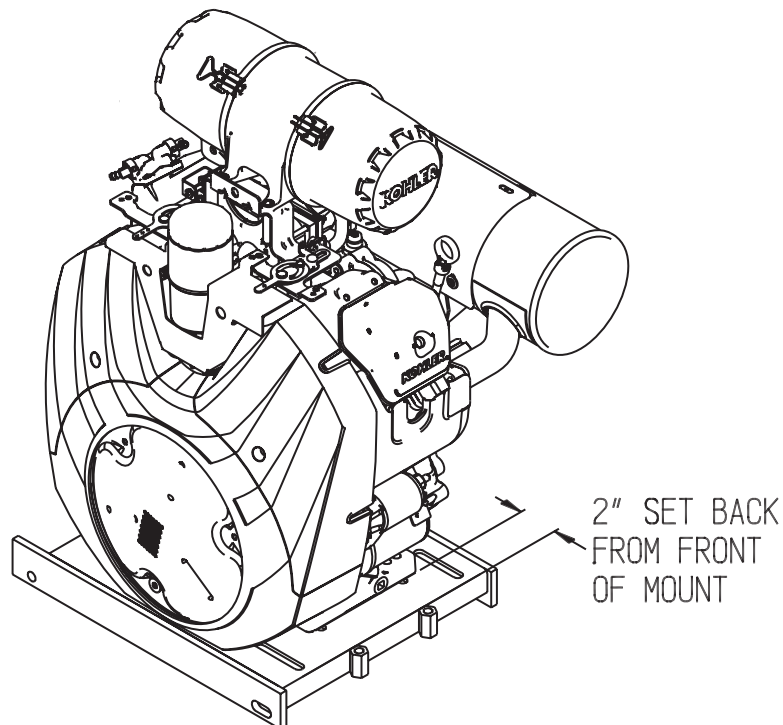
# ILLUSTRATION 10: ENGINE MOUNT GROUPING

38 H.P. KOHLER  
COMMAND PRO GASOLINE ENGINE  
REFER TO ENGINE GROUPING

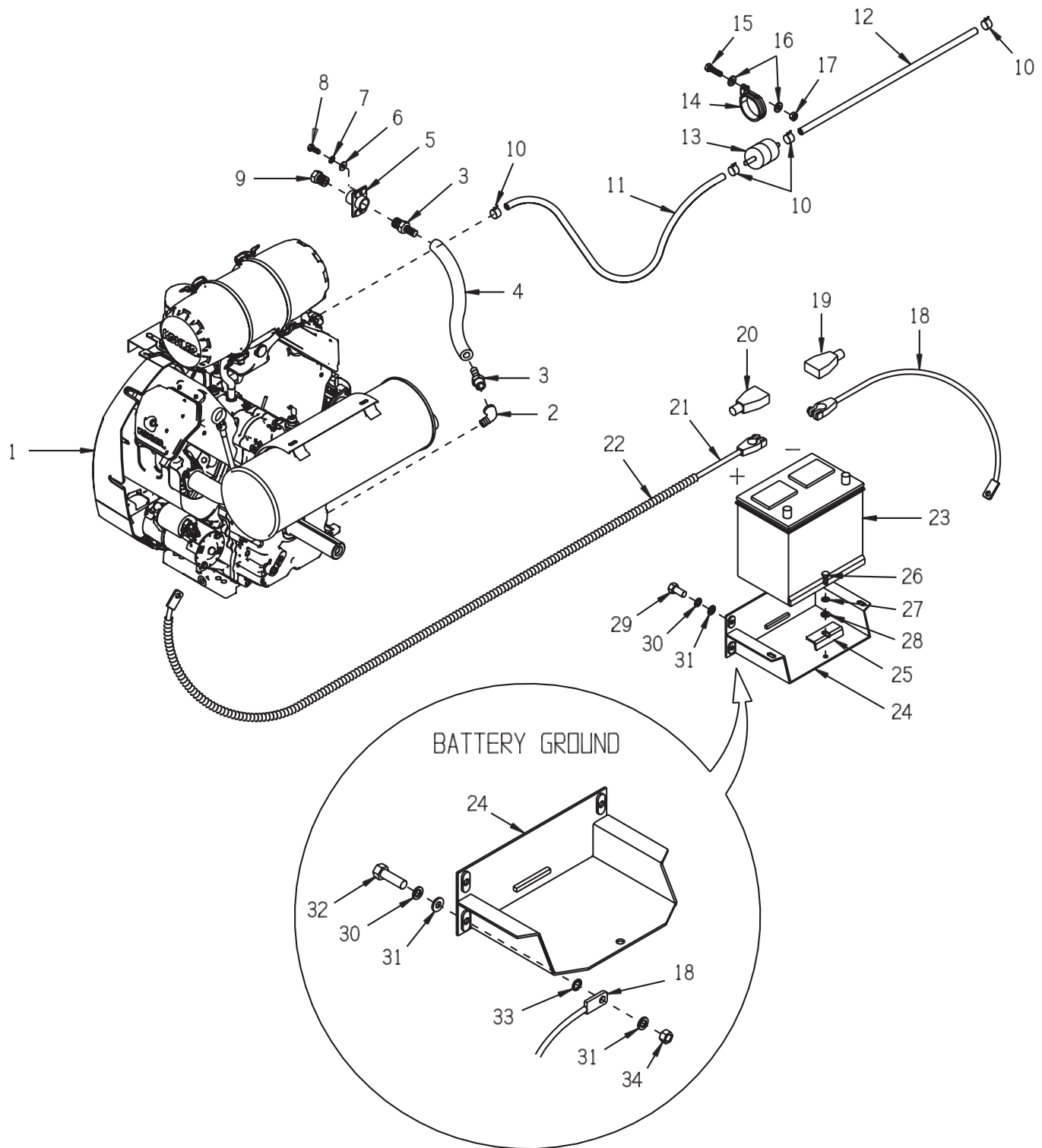


PARTS LISTING - ILLUSTRATION 10: ENGINE MOUNT GROUPING			
ITEM #	PART #	DESCRIPTION	QTY.
1	50506	MOUNT, GASOLINE ENGINE	1
2	50507	BRACKET, ENGINE MOUNT	2
3	10308	SCREW, CAP 1/2-20 X 1-1/2	1
4	10322	SCREW, CAP 1/2-20 X 2	1
5	10312	WASHER, FLAT 1/2 SAE	14
6	10205	NUT, LOCK 1/2-20	2
7	10324	SCREW, CAP 1/2-13 X 3-1/2	4
8	10045	WASHER, LOCK 1/2	4
9	10417	NUT 1/2-13	6
10	10356	SCREW, CAP 1/2-13 X 1-1/2	2
11	10373	BOLT, TAP 1/2-13 X 5 (FULL THREAD)	2
12	50710	TOGGLE PAD 7/8"D X 15/16"H X 1/2-13	2
13	10917	BOLT, CARRIAGE 3/8-16 X 2	4
14	10025	WASHER, FLAT 3/8 SAE	4
15	10811	WASHER, LOCK 3/8	4
16	10404	NUT 3/8-16	4
17	50544	ARM, IDLER (REFER TO BELT DRIVE GROUPING, ILLUS. 7)	1

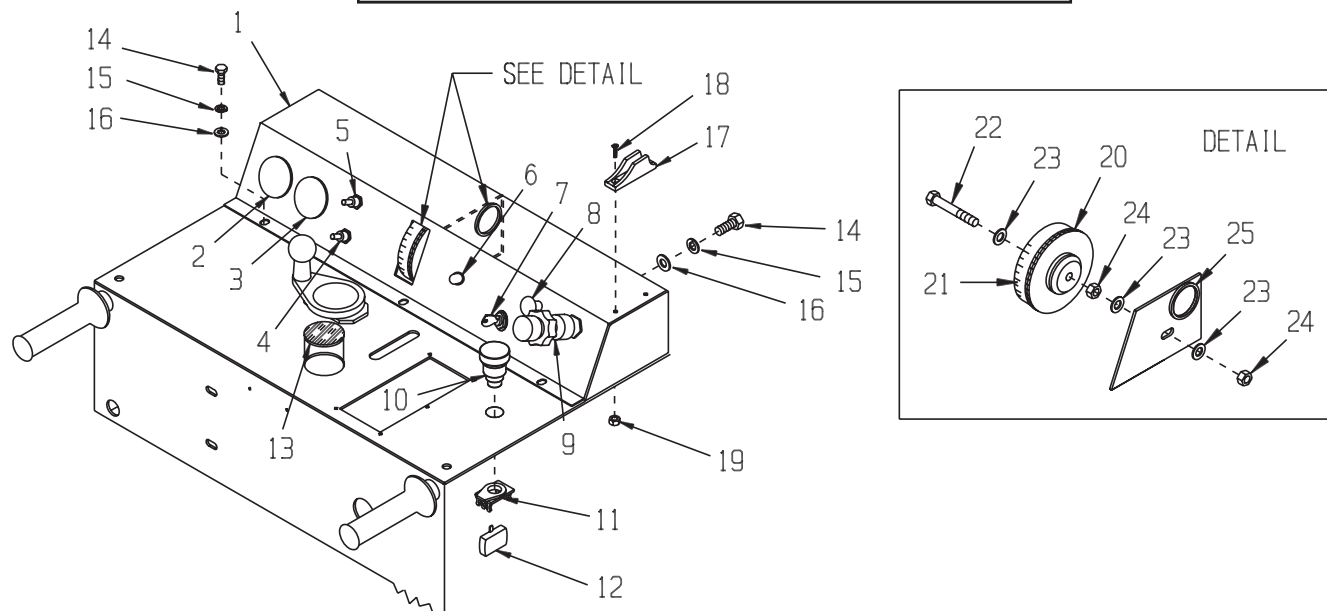
### ENGINE SETTING



# ILLUSTRATION 11 : ENGINE GROUPING



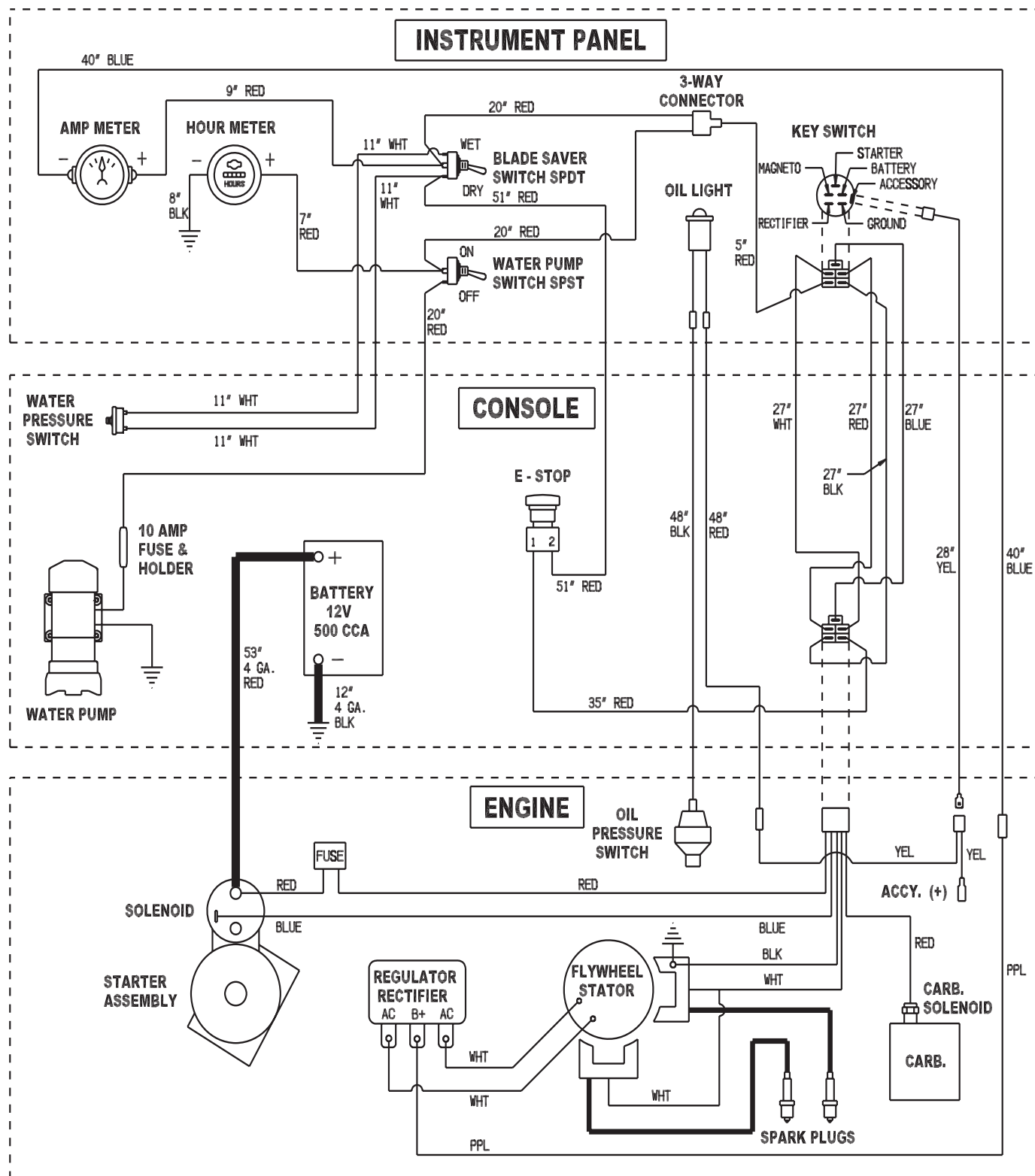
PARTS LISTING - ILLUSTRATION 11: ENGINE GROUPING			
ITEM #	PART #	DESCRIPTION	QTY.
1	15070	ENGINE, KOHLER 38HP COMMAND PRO, MODEL CH980S	1
2	10734	ELBOW, STREET 1/2NPT X 45 (BLACK)	1
3	80061	BARB, PUSH-ON 1/2HOSE X 1/2MPT	2
4	50659	HOSE, PUSH-ON 1/2"ID X 16-1/2"L	1
5	50604	BRACKET, OIL DRAIN	1
6	10602	WASHER, FLAT 1/4 SAE	2
7	10038	WASHER, LOCK 1/4	2
8	10018	SCREW, CAP 1/4-20 X 3/4	2
9	50552	PIPE PLUG 1/2 NPT (BRASS)	1
10	10763	CLAMP, HOSE SPRING-TYPE 7/16" RED	4
11	50737	HOSE, FUEL 1/4"ID X 17"L	1
12	50738	HOSE, FUEL 1/4"ID X 14"L	1
13	15116	FILTER, FUEL 1/4" IN LINE	1
14	11566	CLAMP, LOOM, 1-3/4" (SAE SIZE 28)	1
15	10018	SCREW, CAP 1/4-20 X 3/4	1
16	10602	WASHER, FLAT 1/4 SAE	2
17	10861	NUT, KEPS 1/4-20	1
18	50323B	CABLE, BATTERY 4GA. X 12" (BLACK)	1
19	10929	INSULATOR, BAT.TERM.POST (BLACK)	1
20	10928	INSULATOR, BAT.TERM.POST (RED)	1
21	57055	CABLE, BATTERY 4GA. X 53" (RED)	1
22	50739	LOOM, FLEX 5/8 X 52"L	1
23	50321	BATTERY 12 VOLT/500 CCA(POST TERM.)	1
24	57107	TRAY, BATTERY	1
25	57152	CLAMP, BATTERY HOLD-DOWN	1
26	10068	SCREW, CAP 3/8-16 X 1-1/2	1
27	10811	WASHER, LOCK 3/8	1
28	10025	WASHER, FLAT 3/8 SAE	1
29	10907	SCREW, CAP 3/8-16 X 3/4	3
30	10811	WASHER, LOCK 3/8	5
31	10025	WASHER, FLAT 3/8 SAE	4
32	10333	SCREW, CAP 3/8-16 X 1-1/4	1
33	10453	WASHER, LOCK, INT. TOOTH 1/2"	1
34	10404	NUT 3/8-16	1

**ILLUSTRATION 12 : INSTRUMENT PANEL GROUPING**

ITEM #	PART #	DESCRIPTION	QTY.
1	50651	INSTRUMENT PANEL	1
2	10631	AMMETER YE2, 30 OR 60 AMP	1
3	10637	METER, HOUR 2-1/16"	1
4	10633	SWITCH, TOGGLE SPST 15/10A-115/250V (WATER PUMP)	1
5	10619	SWITCH, TOGGLE SPDT (BLADE SAVER)	1
6	-----	OIL ALERT LIGHT, 38 HP KOHLER (INCLUDED W/ ENGINE)	1
7	-----	SWITCH, IGNITION STARTER, KEY-TYPE, 38 HP KOHLER (INCLUDED W/ ENGINE)	1
8	15129	CABLE, CHOKE CONTROL 72"	1
9	50560	CABLE, VERNIER ADJ. LOCKING CONTROL (THROTTLE)	1
10	15147	SWITCH PUSHBUTTON ONLY, E-STOP	1
11	15148	SWITCH ASSY. CLIP ONLY, E-STOP	1
12	15167	SWITCH CONTACT BLOCK, N.C. E-STOP	1
13	65022	PLUG, HOLE 2"	1
14	10018 10031	SCREW, CAP 1/4-20 X 3/4 1/4-20 X 1	5 2
15	10038	WASHER, LOCK 1/4	7
16	10602	WASHER, FLAT 1/4 SAE	7
17	11591	ROPE CLEAT, NYLON JAM 3/16"-5/16"	1
18	11594	SCREW, MACHINE 10-32 X 5/8, SLT.FLT	2
19	10832	NUT, KEPS 10-32	2
20	57132	WHEEL, DEPTH GAUGE	1
21	-----	DECAL, DEPTH GAUGE	1
22	10336	SCREW, CAP 3/8-24 X 2-1/4	1
23	10025	WASHER, FLAT 3/8 SAE	3
24	10004	NUT, LOCK 3/8-24	2
25	57149	GROMMET 1-1/4ID X 1/8GRV. X 1-1/2GD	1



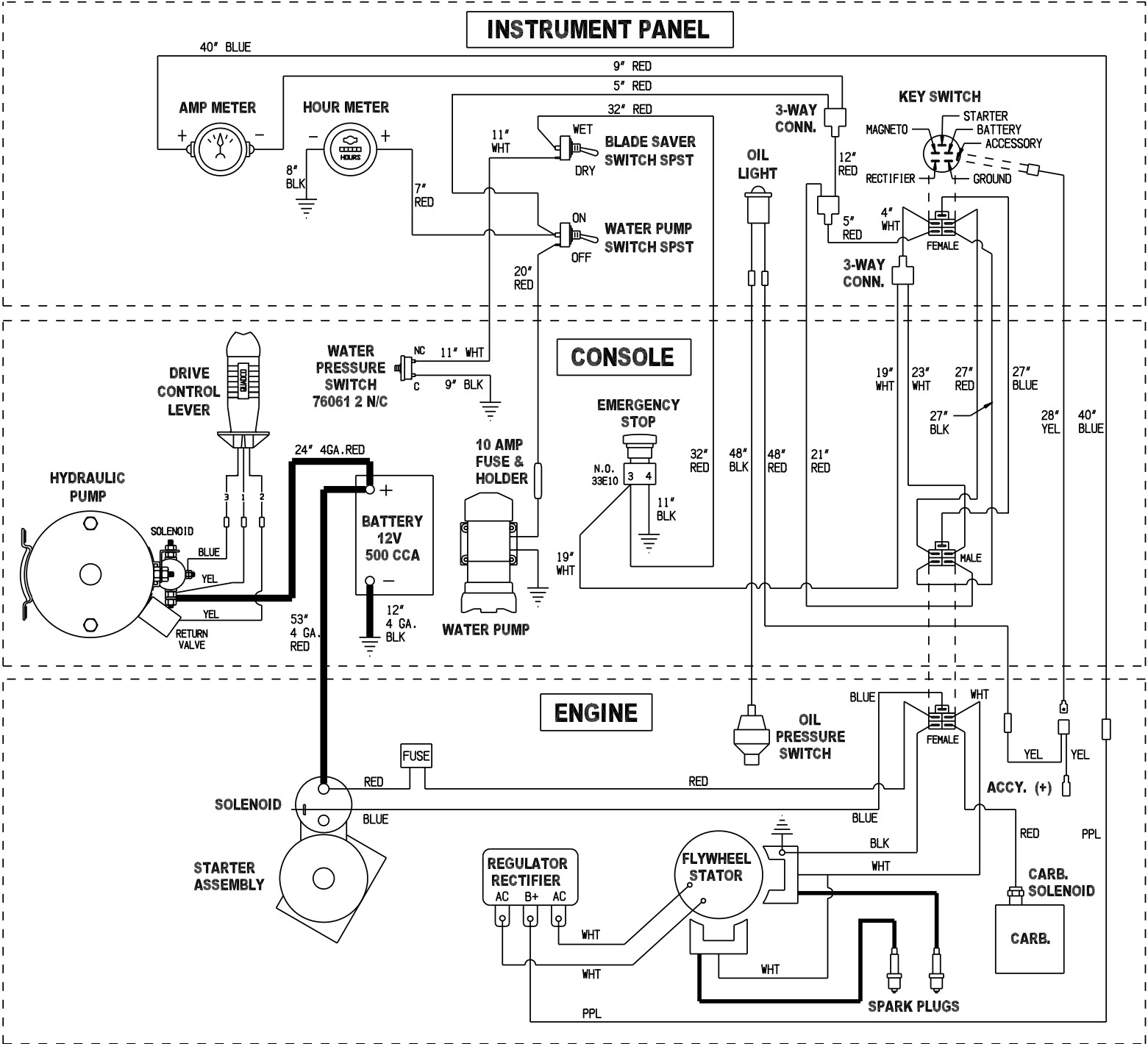
ILLUSTRATION 13 : WIRING DIAGRAM



WIRING DIAGRAM FOR MODEL SS26-38K

REVISED STARTING SERIAL #120310101

E-SS2638K-WD-0412



**LIMITED EQUIPMENT WARRANTY OF SALE – TERMS & CONDITIONS**

Equipment Development Company, Inc. herein referred to as EDCO (Seller) warrants that each new unit manufactured by EDCO to be free from defects in material and workmanship in normal use and service for a period of (1) one year (except for the cutter drum assembly on all model concrete/asphalt planes, in which case the warranty period shall be 90 days) from date of shipment to the original retail or equipment rental center owner.

Accessories or equipment furnished and installed on the product by EDCO but manufactured by others, including, but not limited to engines, motors, electrical components, transmissions etc., shall carry the accessory manufacturers own warranty.

EDCO will, at its option, repair or replace, at the EDCO factory or at a point designated by EDCO, any part which shall appear to the satisfaction of EDCO inspection to have been defective in material or workmanship.

EDCO reserves the right to modify, alter and improve any part or parts without incurring any obligation to replace any part or parts previously sold without such modified, altered or improved part or parts.

This warranty is in lieu of and excludes all other warranties, expressed, implied, statutory, or otherwise created under applicable law including, but not limited to the warranty of merchantability and the warranty of fitness for a particular purpose in no event shall seller or the manufacturer of the product be liable for special, incidental, or consequential damages, including loss of profits, whether or not caused by or resulting from the negligence of seller and/or the manufacturer of the product unless specifically provided herein. In addition, this warranty shall not apply to any products or portions thereof which have been subjected to abuse, misuse, improper installation, maintenance, or operation, electrical failure or abnormal conditions and to products which have been tampered with, altered, modified, repaired, reworked by anyone not approved by seller or used in any manner inconsistent with the provisions of the above or any instructions or specifications provided with or for the product

**FORCE MAJEURE**

Seller's obligation hereunder are subject to, and Seller shall not be held responsible for, any delay or failure to make delivery of all or any part of the Product due to labor difficulties, fires, casualties, accidents, acts of the elements, acts of God, transportation difficulties, delays by a common carrier, inability to obtain Product, materials or components or qualified labor sufficient to timely perform part or all of the obligations contained in these terms and conditions, governmental regulations or actions, strikes, damage to or destruction in whole or part of manufacturing plant, riots, terrorist attacks or incidents, civil commotions, warlike conditions, flood, tidal waves, typhoon, hurricane, earthquake, lightning, explosion or any other causes, contingencies or circumstances within or without the United States not subject to the Seller's control which prevent or hinder the manufacture or delivery of the Products or make the fulfillment of these terms and conditions impracticable. In the event of the occurrence of any of the foregoing, at the option of Seller, Seller shall be excused from the performance under these Terms and Conditions, or the performance of the Seller shall be correspondingly extended.

This document sets forth the terms and conditions pursuant to which the purchaser ("Purchaser") will purchase and Equipment Development Co. Inc. ("Seller") will sell the products, accessories, attachments (collectively the Products") ordered by the Purchaser. These terms and conditions shall govern and apply to the sale of Seller's Products to Purchaser, regardless of any terms and conditions appearing on any purchase order or other forms submitted by Purchaser to Seller, or the inconsistency of any terms therein and herein.

**1. PRICE**

All prices set forth on any purchase order or other document are F.O.B. Sellers facility or distribution point, as may be determined by Seller (F.O.B. Point). All prices are exclusive of any and all taxes, including, but not limited to, excise, sales, use, property or transportation taxes related to the sale or use of the Products, now or hereafter imposed, together with all penalties and expenses. Purchaser shall be responsible for collecting and/or paying any and all such taxes, whether or not they are stated in any invoice for the Products. Unless otherwise specified herein, all prices are exclusive of inland transportation, freight, insurance and other costs and expenses relating to the shipment of the Products from the F.O.B. point to Purchaser's facility. Any prepayment by Seller of freight insurance and other costs shall be for the account of Purchaser and shall be repaid to Seller.

**2. PAYMENT TERMS**

Payment terms are as follows. 2% 10 days (to approved and qualified accounts). Net 30 days. This is a cash discount for invoices paid within 10 days after the invoice date, regardless of date of receipt of shipment. This is not a trade discount and will not be granted to accounts that do not adhere to stated terms.

\*All past due accounts are subject to a late payment fee of 1.5% per month or a maximum allowed by law if different, along with the expenses incidental to collection including reasonable attorney's fees and costs.

\*Seller reserves the right to hold shipments against past due accounts.

\*Seller reserves the right to alter payment terms.

**3. FREIGHT TERMS**

All shipments will be made F.O.B. shipping point as designated in these Terms and Conditions, and title shall pass at the F.O.B. point. Delivery to the initial common carrier shall constitute delivery to the Purchaser. Any claims for loss or damage during shipment are to be filed with carrier by the Purchaser. Seller will not assume responsibility for the performance of the carrier.

Back orders will be shipped in the most practical fashion with charges consistent with our freight policy established with the original order. UPS, FED EX, MAIL or shipments by other couriers are subject to the same terms and conditions as outlined in paragraph #3 "Freight Terms".

**4. DELIVERY, DAMAGES, SHORTAGES**

Seller shall use reasonable efforts to attempt to cause the Products to be delivered as provided for in these Terms & Conditions. Delivery to the initial common carrier shall constitute the delivery to the Purchaser. Sellers responsibility, in so far as transportation risks are concerned ceases upon the delivery of the Products in good condition to such carrier at the F.O.B. point and all the Products shall be shipped at the Purchaser's risk. Seller shall not be responsible or liable for any loss of income and/or profits, or incidental, special, consequential damages resulting from Seller's delayed performance in shipment and delivery.

**5. RETURN OF DEFECTIVE PRODUCTS**

Defective or failed material shall be held at the Purchaser's premises until authorization has been granted by Seller to return or dispose of Products. Products that are to be returned for final inspection must be returned Freight Prepaid in the most economical way. Credit will be issued for material found to be defective upon Seller's inspection based on prices at time of purchase.

**6. PRODUCTS ORDERED IN ERROR**

Products may be returned, provided that claim is made and Seller is notified within 7 days of receipt of Products, and the Products are in original buyer's possession not more than 30 days prior to return, subject to Seller's approval. If Products are accepted for return, they must be Freight Prepaid and buyer will be charged a minimum of 15% rehaling charge, plus a charge back for outbound freight charges if the original order was shipped prepaid. Returns are not accepted for any Products that are specifically manufactured to meet the buyer's requirement of either specifications or quantity.

**AGREEMENTS**

These Terms and Conditions constitute the entire agreement between Seller and Purchaser as it relates to terms and conditions of sale, and supersedes any and all prior oral or written agreements, correspondence, quotations or understandings heretofore in force between the parties relating to the subject matter hereof. There are no agreements between Seller and Purchaser with respect to the Product herein except those specifically set forth in and made part of these terms and conditions. Any additional terms, conditions and/or prices are rejected by Seller.

These terms and conditions may be modified, cancelled or rescinded only by a written agreement of both parties executed by their duly authorized agents.

**USE ONLY GENUINE EDCO PARTS & ACCESSORIES**  
**For your own safety, the safety of others and the life of your machine.**

**Equipment Development Company, Inc.**

