

REVISED STARTING
SERIAL # 151110141**PARTS LIST MANUAL****MODEL SS26-15B****Electric Powered
Self-Propelled Concrete & Asphalt Saw****SAW SET-UP OPTIONS**

| SKU NUMBER | BLADE GUARD SIZE | BLADE SPEED |
|-----------------|------------------|-------------|
| 34300-30-460 | 30 INCH | 1755 RPM |
| 34300-30-50/415 | 30 INCH | 1450 RPM |

**EQUIPMENT DEVELOPMENT COMPANY, INC.**

100 Thomas Johnson Drive, Frederick, MD 21702-4600 USA
Phone: 800-638-3326 or 301-663-1600 • Fax: 800-447-3326 or 301-663-1607
Website: www.edcoinc.com • E-mail: sales@edcoinc.com

Printed in USA

JWA ©2015

READ AND UNDERSTAND THE OPERATORS INSTRUCTION MANUAL THOROUGHLY BEFORE ATTEMPTING TO OPERATE THIS EQUIPMENT.



Death or serious injury could occur if this machine is used improperly.



SAFETY MESSAGES

- Safety Instructions are preceded by a graphic alert symbol of DANGER, WARNING, or CAUTION.



Indicates an imminent hazard which, if not avoided, will result in death or serious injury.



Indicates an imminent hazard which, if not avoided, can result in death or serious injury.



Indicates hazards which, if not avoided, could result in serious injury and or damage to the equipment.

GASOLINE/PROPANE POWERED EQUIPMENT



- Engine exhaust from this product contains chemicals known to the State of California to cause cancer, birth defects or other reproductive harm.



- Gasoline is extremely flammable and poisonous. It should only be dispensed in well ventilated areas, and with a cool engine.

- Small gasoline engines produce high concentrations of carbon monoxide (CO) example: a 5 HP 4 cycle engine operation in an enclosed 100,000 cu. ft. area with only one change of air per hour is capable of providing deadly concentrations of CO in less than fifteen minutes. Five changes of air in the same area will produce noxious fumes in less than 30 minutes. Gasoline or propane powered equipment should not be used in enclosed or partially enclosed areas. Symptoms of CO poisoning include, headache, nausea, weakness, dizziness, visual problems and loss of consciousness. If symptoms occur - get into fresh air and seek medical attention immediately.

ELECTRICAL POWERED EQUIPMENT



Extreme care must be taken when operating electric models with water present: Ensure power cord is properly grounded, is attached to a Ground-Fault-Interrupter (GFI) outlet, and is undamaged.

- Check all electrical cables - be sure connections are tight and cable is continuous and in good condition. Be sure cable is correctly rated for both the operating current and voltage of this equipment.
- Improper connection of the equipment-grounding conductor can result in a risk of electric shock. Check with qualified electrician or service person if there is any doubt as to whether the outlet is properly grounded. Adhere to all local codes and ordinances.
- **NOTE:** In the event of a malfunction or breakdown, grounding provides a path of least resistance for the electric current to dissipate. The motor is equipped with a grounded plug and must be connected to an outlet that is properly installed and properly grounded. DO NOT modify the plug provided on the motor. If the plug does not fit the outlet have a qualified electrician install the proper receptacle.
- Switch motor OFF before disconnecting power.

- Do not disconnect power by pulling cord. To disconnect, grasp the plug, not the cord.
- Unplug power cord at the machine when not in use and before servicing.

GENERAL INSTRUCTIONS

- Equipment should only be operated by trained personnel in good physical condition and mental health (not fatigued). The operator and maintenance personnel must be physically able to handle the bulk weight and power of this equipment.
- This is a one person tool. Maintain a safe operating distance to other personnel. It is the operators' responsibility to keep other people (workers, pedestrians, bystanders, etc.) away during operation. Block off the work area in all directions with roping, safety netting, etc. for a safe distance. Failure to do so may result in others being injured by flying debris or exposing them to harmful dust and noise.
- This equipment is intended for commercial use only.
- For the operator's safety and the safety of others, always keep all guards in place during operation.
- Never let equipment run unattended.



- Personal Protection Equipment and proper safety attire must be worn when operating this machinery. The operator must wear approved safety equipment appropriate for the job such as hard hat and safety shoes when conditions require. Hearing protection MUST be used (operational noise levels of this equipment may exceed 85db). Eye protection MUST be worn at all times.



Keep body parts and loose clothing away from moving parts. Failure to do so could result in dismemberment or death.

- Do not modify the machine.
- Stop motor/engine when adjusting or servicing this equipment. Maintain a safe operating distance from flammable materials. Sparks from the cutting-action of this machine can ignite flammable materials or vapors.

DUST WARNING



Some dust created by power sanding, sawing, grinding, drilling, and other construction activities contains chemicals known to cause cancer, birth defects, or other reproductive harm. Some examples of these chemicals are:

- Lead from lead-based paints, and
- Crystalline silica from bricks and concrete and other masonry products.

Your risk of exposure to these chemicals varies depending on how often you do this type of work. To reduce your risk: work in a well ventilated area, use a dust control system, such as an industrial-style vacuum, and wear approved personal safety equipment, such as a dust/particle respirator designed to filter out microscopic particles.

PARTS LIST MANUAL FOR MODEL SS26-15B

TABLE OF CONTENTS

| <u>Section</u> | <u>Page Numbers</u> |
|--|---------------------|
| Safety Messages & General Instructions | 2 |
| How To Order Replacement Parts | 3 |
| Illustration 1: Frame Grouping | 4, 5 |
| Illustration 2: Lift Grouping | 6, 7 |
| Illustration 3: Rear Axle Grouping | 8, 9 |
| Illustration 4: Transmission, Drive Lever & Linkage Grouping | 10, 11 |
| Illustration 5: Clutch Lever & Linkage Grouping | 12, 13 |
| Illustration 6: Clutch Grouping | 14, 15 |
| Illustration 7: Arbor Grouping | 16, 17 |
| Illustration 8: Blade Guard Grouping | 18, 19 |
| Illustration 9: Water Pump Grouping | 20, 21 |
| Illustration 10: Instrument Panel, Console Front & Rear Panel Grouping | 22 |
| Illustration 11: Blade Depth Gauge Grouping | 23 |
| Illustration 12: Operating Controls | 24 |
| Illustration 13: Guide Bar Assembly | 25 |
| Illustration 14: Motor & Mount Grouping | 26, 27 |
| Illustration 15: Alternator Grouping | 28 |
| Illustration 16: Battery Grouping | 29 |
| Illustration 17: Belt Drive Grouping | 30, 31 |
| Illustration 18: Starter & E-Stop Switch Grouping | 32, 33 |
| Illustration 19: Emergency Stop Switch | 34 |
| This Page Left Blank Intentionally | 35 |
| Wiring Diagram for 60Hz Model | 36 |
| Wiring Diagram for 60Hz Motor | 37 |
| Wiring Diagram for 50Hz Model | 38 |
| Wiring Diagram for 50Hz Motor | 39 |
| Decals Sheets | 40, 41, 42 |
| Notes | 43 |
| Limited Equipment Warranty of Sale - Terms & Conditions | 44 Back Cover |

HOW TO ORDER REPLACEMENT PARTS

- ☐ To insure product safety and reliability, always use genuine EDCO replacement parts when making repairs to the equipment.
- ☐ When calling for parts, specify the MODEL and SERIAL number of the machine, which can be found on the NAME PLATE. Keep that information in the space provided. In addition to this information, give part number, description, and quantity as listed on the parts list to your parts representative.
- ☐ Please note: Due to improvements and changes in the equipment, the illustrations shown may be different than the actual machine.

FILL IN INFORMATION BELOW

Date of Purchase _____

Model # _____

Serial # _____

SKU # _____



EQUIPMENT DEVELOPMENT COMPANY, INC.

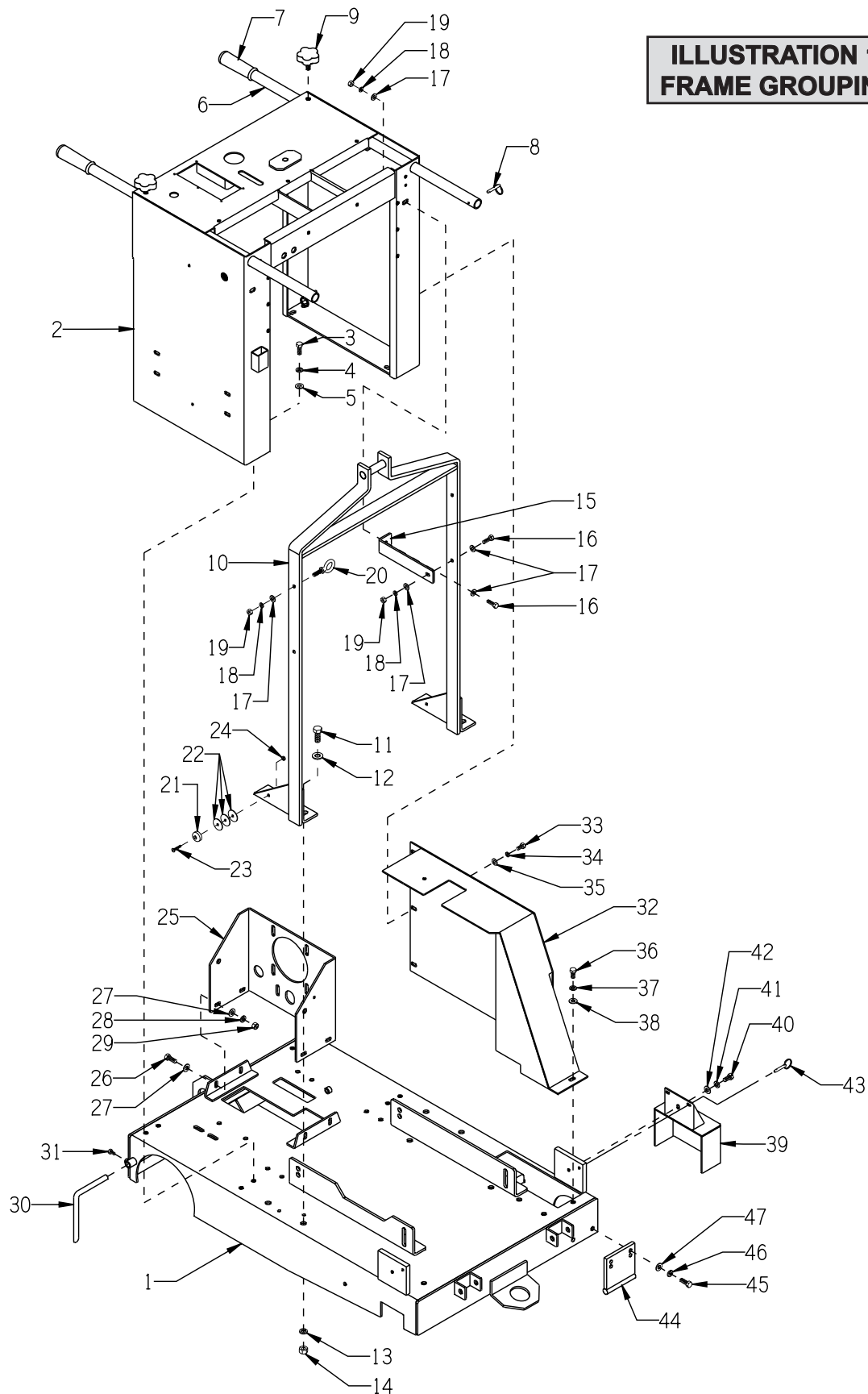
100 Thomas Johnson Drive, Frederick, MD 21702-4600 USA
 Phone: 800-638-3326 or 301-663-1600 • Fax: 800-447-3326 or 301-663-1607
 Website: www.edcoinc.com • E-mail: sales@edcoinc.com

Printed in USA

JWA ©2015

Page 3

**ILLUSTRATION 1:
FRAME GROUPING**



PARTS LISTING - ILLUSTRATION 1: FRAME GROUPING

| ITEM # | PART # | DESCRIPTION | QTY. | ITEM # | PART # | DESCRIPTION | QTY. |
|--------|----------|---|------|--------|--------|-------------------------------|------|
| 1 | 50701 | MAIN FRAME, SS-26 | 1 | 24 | 10832 | NUT, KEPS LOCK 10-32 ZINC | 1 |
| 2 | 50650 | CONSOLE, SS-26/35 | 1 | 25 | 50508 | MOUNT, TRANSMISSION, SS-26 | 1 |
| 3 | 10055 | SCREW, CAP 3/8-16 X 1 | 8 | 26 | 10021 | SCREW, CAP 3/8-24 X 1 | 4 |
| 4 | 10811 | WASHER, LOCK 3/8 ZINC | 8 | 27 | 10025 | WASHER, FLAT 3/8 SAE ZINC | 8 |
| 5 | 10025 | WASHER, FLAT 3/8 SAE ZINC | 8 | 28 | 10811 | WASHER, LOCK 3/8 ZINC | 4 |
| 6 | 50522 | HANDLE BAR 36", SS-26 | 2 | 29 | 10014 | NUT, HEX 3/8-24 ZINC | 4 |
| 7 | 10608 | GRIP, HAND 1" MODEL AT | 2 | 30 | 51011 | GUIDE POINTER, REAR | 1 |
| 8 | 10145 | PIN, DETENT RING 3/16 X 1-5/16 | 2 | 31 | 10834 | SCREW, CAP 1/4-20 X 1/2 ZINC | 1 |
| 9 | 51230 | KNOB, STAR CLAMPING 3/8-16 X 1" STUD | 2 | 32 | 50670 | BELT COVER, SS26E | 1 |
| 10 | 50606E | BAIL, LIFTING | 1 | 33 | 10053 | SCREW, CAP 5/16-18 X 3/4 | 3 |
| 11 | 10321 | SCREW, CAP 1/2-20 X 1-1/4 | 4 | 34 | 10801 | WASHER, LOCK 5/16 ZINC | 3 |
| 12 | 10312 | WASHER, FLAT 1/2 SAE ZINC | 4 | 35 | 10213 | WASHER, FLAT 5/16 SAE ZINC | 3 |
| 13 | 10045 | WASHER, LOCK 1/2 ZINC | 4 | 36 | 10907 | SCREW, CAP 3/8-16 X 3/4 | 1 |
| 14 | 10072 | NUT, HEX 1/2-20 ZINC | 4 | 37 | 10811 | WASHER, LOCK 3/8 ZINC | 1 |
| 15 | 50711E | BRACE, LIFTING BAIL | 2 | 38 | 10025 | WASHER, FLAT 3/8 SAE ZINC | 1 |
| 16 | 10806 | SCREW, CAP 5/16-18 X 1 | 4 | 39 | 50704 | COVER, ARBOR, SS-26 | 1 |
| 17 | 10213 | WASHER, FLAT 5/16 SAE ZINC | 9 | 40 | 10907 | SCREW, CAP 3/8-16 X 3/4 | 1 |
| 18 | 10801 | WASHER, LOCK 5/16 ZINC | 5 | 41 | 10811 | WASHER, LOCK 3/8 ZINC | 1 |
| 19 | 10054 | NUT, HEX 5/16-18 ZINC | 5 | 42 | 10025 | WASHER, FLAT 3/8 SAE ZINC | 1 |
| 20 | 11593 | BOLT, EYE SHOULDER 5/16-18 X 1-1/8 | 1 | 43 | 49016 | PIN, DETENT RING 1/4 X 1 E.L. | 1 |
| 21 | 52022 | BUMPER, RUBBER | 1 | 44 | 50703 | GUARD, LOWER PULLEY, SS-26 | 1 |
| 22 | 40378-S1 | WASHER, FENDER 1/4ID X 1-1/4OD S.S. | 3 | 45 | 10055 | SCREW, CAP 3/8-16 X 1 | 2 |
| 23 | 10384 | SCREW, MACHINE 10-32 X 1 | 1 | 46 | 10811 | WASHER, LOCK 3/8 ZINC | 2 |
| | | | | 47 | 10025 | WASHER, FLAT 3/8 SAE ZINC | 2 |

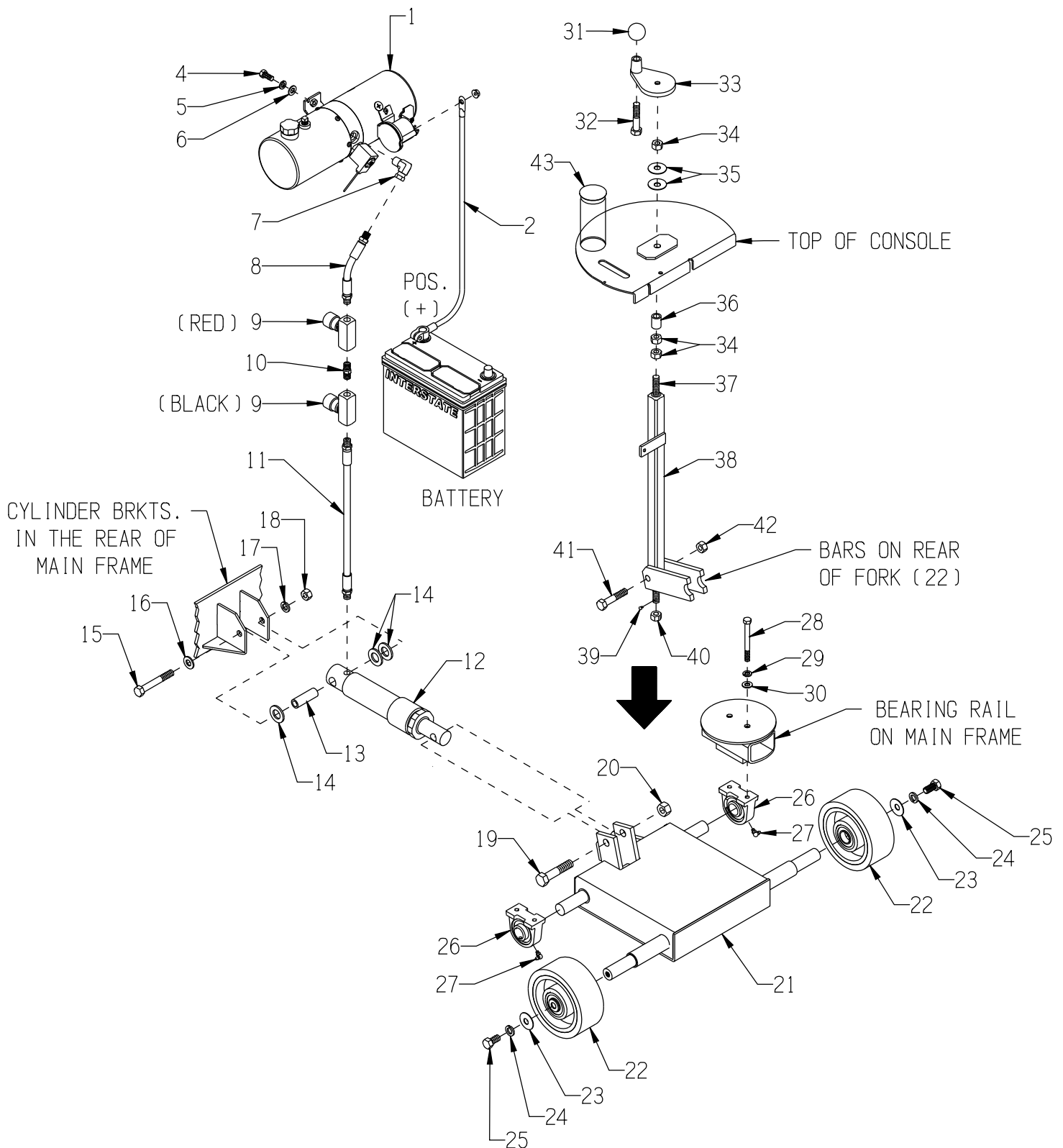
**EQUIPMENT DEVELOPMENT COMPANY, INC.**

100 Thomas Johnson Drive, Frederick, MD 21702-4600 USA
 Phone: 800-638-3326 or 301-663-1600 • Fax: 800-447-3326 or 301-663-1607
 Website: www.edcoinc.com • E-mail: sales@edcoinc.com

Printed in USA

JWA ©2015

Page 5

ILLUSTRATION 2: LIFT GROUPING

PARTS LISTING - ILLUSTRATION 2: LIFT GROUPING

| ITEM # | PART # | DESCRIPTION | QTY. | ITEM # | PART # | DESCRIPTION | QTY. |
|--------|--------|---|------|--------|--------|--|------|
| 1 | 50620 | PUMP, HYDRAULIC ELEC., 12VDC M-319 REPLACEMENT PARTS FOR PUMP: 50620-1 SOLENOID 50620-2 VALVE 50620-12 COIL 50620-42 PLUG, VENT (PLASTIC) 01143 50620-43 PLUG, SQUARE HEAD, 1/4 NPT | 1 | 21 | 50502 | FORK, SS-26 | 1 |
| 2 | 50324R | CABLE, BATTERY 4GA. X 24" (RED) | 1 | 22 | 50439 | WHEEL 6 X 2-1/2 X 1"BRG., RED POLY | 2 |
| 3 | ----- | NO ITEM | - | 23 | 10433 | WASHER, BELLEVILLE 1/2ID X 3/32THK | 2 |
| 4 | 10055 | SCREW, CAP 3/8-16 X 1 | 2 | 24 | 10045 | WASHER, LOCK 1/2 ZINC | 2 |
| 5 | 10811 | WASHER, LOCK 3/8 ZINC | 2 | 25 | 10914 | SCREW, CAP 1/2-13 X 1 | 2 |
| 6 | 10025 | WASHER, FLAT 3/8 SAE ZINC | 2 | 26 | 50222 | BEARING, BALL 1" TPB | 2 |
| 7 | 10794 | FITTING, SWIVEL 90D, 3/8 X 1/4 NPT | 1 | 27 | 10961 | FITTING, GREASE 1/4-28 X 90° | 2 |
| 8 | 57078 | HOSE, HYDRAULIC 1/4NPT X 6-1/2"LOA | 1 | 28 | 10868 | SCREW, CAP 3/8-16 X 3-1/2 | 4 |
| 9 | 61116 | VALVE, FLOW CONTROL | 2 | 29 | 10811 | WASHER, LOCK 3/8 ZINC | 4 |
| 10 | 10717 | NIPPLE, HEX 1/4 NPT (BRASS) | 1 | 30 | 10025 | WASHER, FLAT 3/8 SAE ZINC | 4 |
| 11 | 50527 | HOSE, HYDRAULIC 1/4NPT X 15-1/2"LOA | 1 | 31 | 14023 | KNOB, BALL 1-3/8 W/ 1/2-13THD | 1 |
| 12 | 61020 | CYLINDER, HYDRAULIC | 1 | 32 | 10323 | SCREW, CAP 1/2-13 X 2-1/2 | 1 |
| 13 | 61021 | SPACER, CYL.REAR 1/2"ID X 2-1/4 | 1 | 33 | 57016 | HANDWHEEL, SMALL W/ 1/2-13 THD. | 1 |
| 14 | 10009 | WASHER, FLAT 3/4 SAE ZINC | 3 | 34 | 10417 | NUT, HEX 1/2-13 ZINC | 3 |
| 15 | 10324 | SCREW, CAP 1/2-13 X 3-1/2 | 1 | 35 | 10426 | WASHER, BELLEVILLE 1/2ID X 3/64THK | 2 |
| 16 | 10312 | WASHER, FLAT 1/2 SAE ZINC | 1 | 36 | 50526 | SPACER, STEEL 1/2"ID X 1"LG | 1 |
| 17 | 10045 | WASHER, LOCK 1/2 ZINC | 1 | 37 | 50409 | ROD, ALLTHREAD LINKAGE 1/2-13 X 22" | 1 |
| 18 | 10417 | NUT, HEX 1/2-13 ZINC | 1 | 38 | 50412 | LINKAGE LOWER TUBE, SS-26 | 1 |
| 19 | 10326 | SCREW, CAP 5/8-11 X 3 | 1 | 39 | 10127 | SCREW, DRIVE 1/8 X 1/4"L | 1 |
| 20 | 10809 | NUT, HEX LOCK 5/8-11 ZINC | 1 | 40 | 50455 | NUT 1/2-13, SPECIAL | 1 |
| | | | | 41 | 10343 | SCREW, CAP 1/2-20 X 2-1/2 | 1 |
| | | | | 42 | 10809 | NUT, HEX LOCK 5/8-11 ZINC | 1 |
| | | | | 43 | 65022 | PLUG, HOLE 2" | 1 |



EQUIPMENT DEVELOPMENT COMPANY, INC.

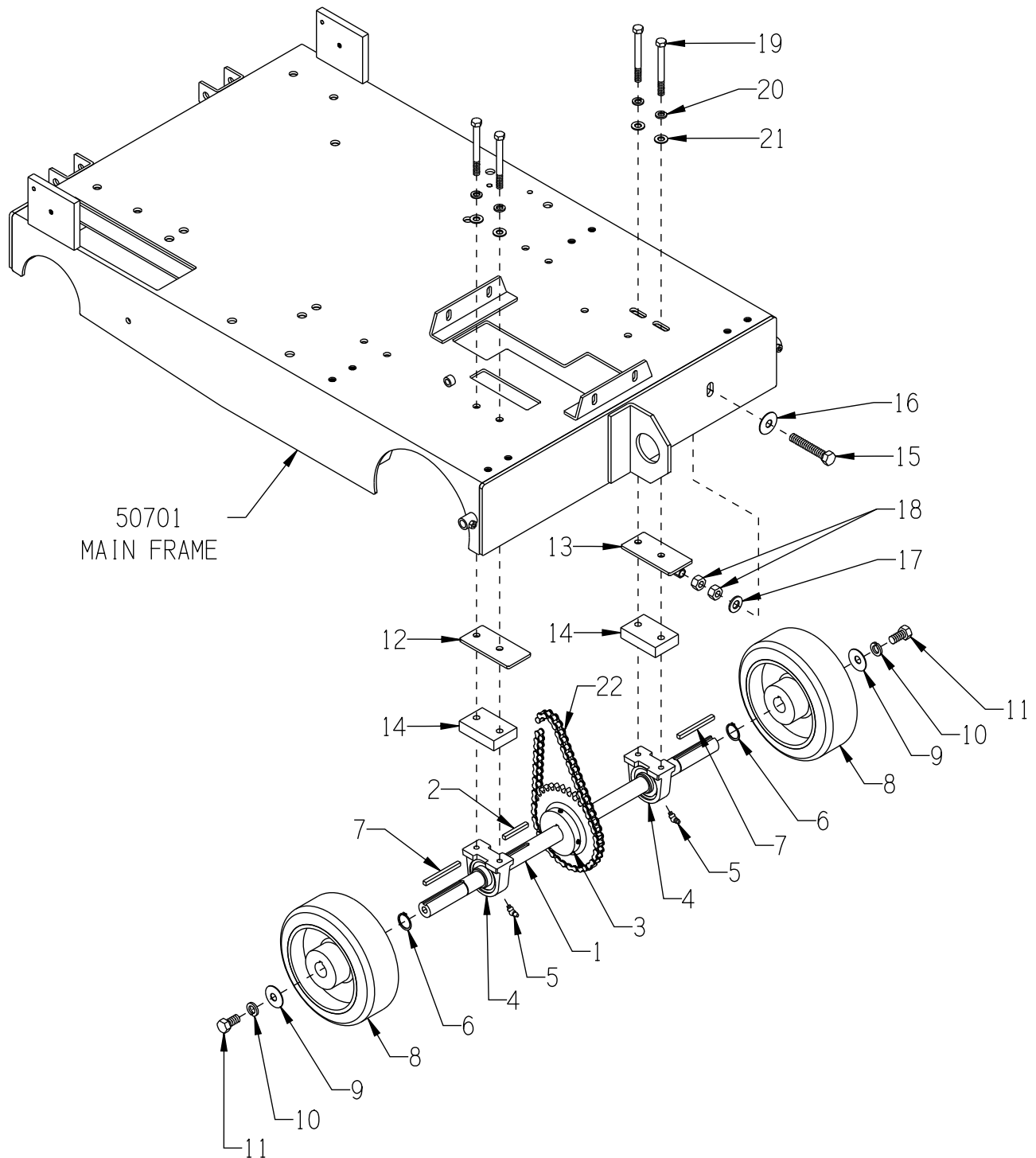
100 Thomas Johnson Drive, Frederick, MD 21702-4600 USA
 Phone: 800-638-3326 or 301-663-1600 • Fax: 800-447-3326 or 301-663-1607
 Website: www.edcoinc.com • E-mail: sales@edcoinc.com

Printed in USA

JWA ©2015

Page 7

ILLUSTRATION 3: REAR AXLE GROUPING



| PARTS LISTING - ILLUSTRATION 3: REAR AXLE GROUPING | | | |
|---|--------|------------------------------------|------|
| ITEM # | PART # | DESCRIPTION | QTY. |
| 1 | 50519 | AXLE SHAFT 1"DIA. X 25"L, SS-26 | 1 |
| 2 | 10115 | KEY 1/4SQ X 2 | 1 |
| 3 | 61126 | SPROCKET #40B34 X 1"BORE | 1 |
| 4 | 50222 | BEARING, BALL 1" TPB | 2 |
| 5 | 10960 | FITTING, GREASE 1/4-28 X 45° | 2 |
| 6 | 10906 | RETAINING RING, EXT. 1" | 2 |
| 7 | 10132 | KEY 1/4SQ X 3 | 2 |
| 8 | 61065 | WHEEL 8 X 3 X 1"BORE | 2 |
| 9 | 10433 | WASHER, BELLEVILLE 1/2ID X 3/32THK | 2 |
| 10 | 10045 | WASHER, LOCK 1/2 ZINC | 2 |
| 11 | 10914 | SCREW, CAP 1/2-13 X 1 | 2 |
| 12 | 50511 | SHIM, AXLE BEARING, SS-26 | 1 |
| 13 | 50512 | SHIM, AXLE BEARING W/ ADJ.,SS-26 | 1 |
| 14 | 50510 | SPACER, BEARING, SS-26 | 2 |
| 15 | 10340 | BOLT, TAP 1/2-13 X 3 (FULL THREAD) | 1 |
| 16 | 10433 | WASHER, BELLEVILLE 1/2ID X 3/32THK | 1 |
| 17 | 10312 | WASHER, FLAT 1/2 SAE ZINC | 1 |
| 18 | 10417 | NUT, HEX 1/2-13 ZINC | 2 |
| 19 | 10318 | SCREW, CAP 3/8-16 X 3-3/4 | 4 |
| 20 | 10811 | WASHER, LOCK 3/8 ZINC | 4 |
| 21 | 10025 | WASHER, FLAT 3/8 SAE ZINC | 4 |
| 22 | 50542 | CHAIN #40 X 25" + CL, SS-26 | 1 |


EQUIPMENT DEVELOPMENT COMPANY, INC.

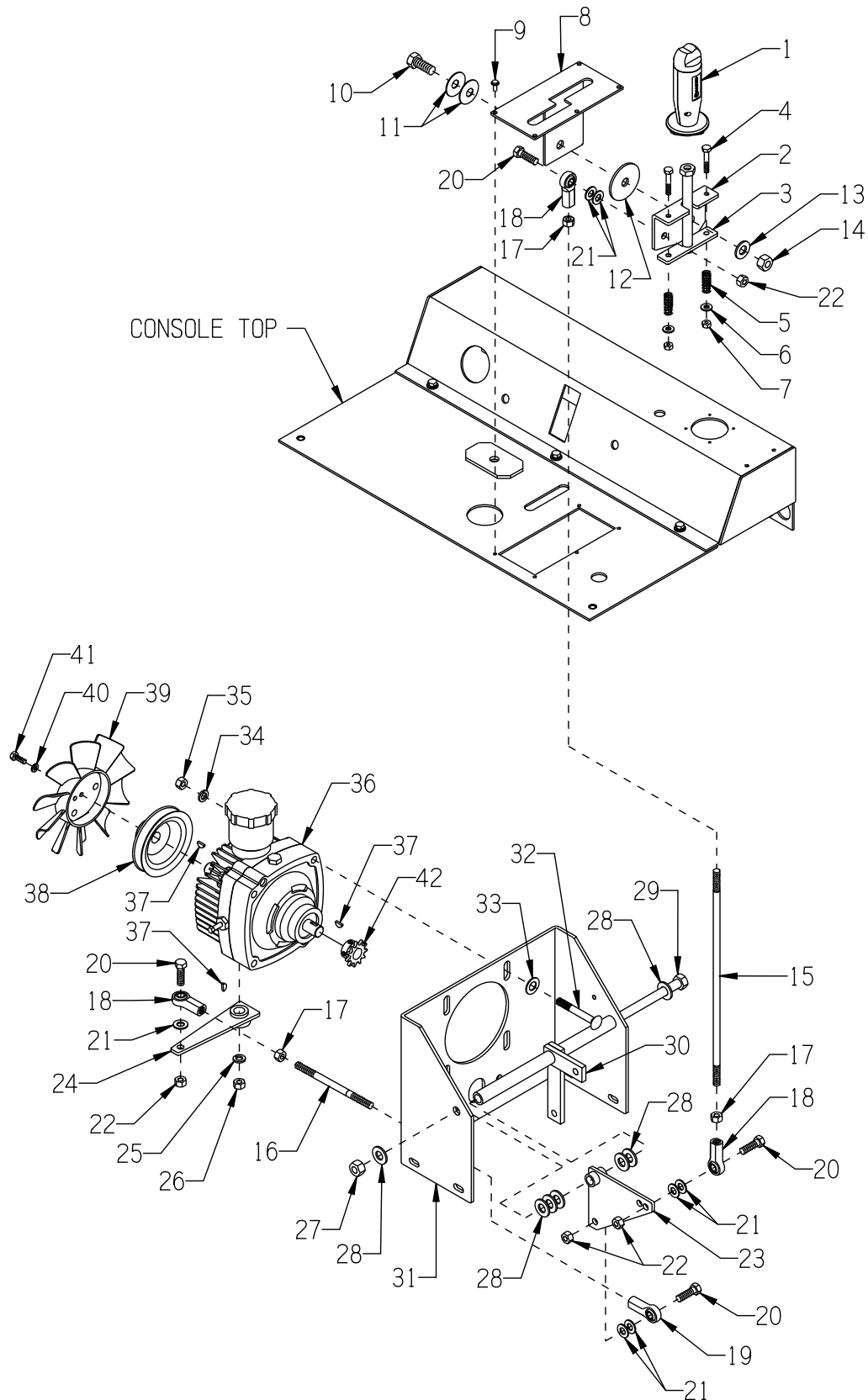
100 Thomas Johnson Drive, Frederick, MD 21702-4600 USA
 Phone: 800-638-3326 or 301-663-1600 • Fax: 800-447-3326 or 301-663-1607
 Website: www.edcoinc.com • E-mail: sales@edcoinc.com

Printed in USA

JWA ©2015

Page 9

ILLUSTRATION 4: TRANSMISSION, DRIVE LEVER & LINKAGE GROUPING



**PARTS LISTING - ILLUSTRATION 4:
TRANSMISSION, DRIVE LEVER & LINKAGE GROUPING**

| ITEM # | PART # | DESCRIPTION | QTY. | ITEM # | PART # | DESCRIPTION | QTY. |
|--------|---------|-----------------------------|------|--------|--------|----------------------------|------|
| 1 | 50610 | GRIP W/ ROCKER SWITCH | 1 | 20 | 10309 | SCREW, CAP 3/8-24 X 1-1/4 | 4 |
| | 50610-1 | INDIVIDUAL PARTS: | 1 | 21 | 10025 | WASHER, FLAT 3/8 SAE ZINC | 7 |
| | 50614A | GRIP BUILD KIT, 2 HALVES | 1 | 22 | 10004 | NUT, HEX LOCK 3/8-24 ZINC | 4 |
| | 50615 | ROCKER SWITCH W/ WIRES | 1 | 23 | 57123 | BELLCRANK, DRIVE CONTROL | 1 |
| | | CAP, RUBBER BOOT | 1 | 24 | 50422 | TRANS. CONTROL ARM | 1 |
| 2 | 50613 | PLATE, DRIVE LEVER | 1 | 25 | 10811 | WASHER, LOCK 3/8 ZINC | 1 |
| | | PRESSURE | | 26 | 10404 | NUT, HEX 3/8-16 ZINC | 1 |
| 3 | 50608 | LEVER, DRIVE, SS-26 | 1 | 27 | 10407 | NUT, HEX LOCK 1/2-13 ZINC | 1 |
| 4 | 10315 | SCREW, CAP 1/4-20 X 1-1/2 | 2 | 28 | 10312 | WASHER, FLAT 1/2 SAE ZINC | 7 |
| 5 | 57471 | SPRING, COMP. . | 2 | 29 | 10421 | SCREW, CAP 1/2-13 X 13 | 1 |
| | | 468"OD X 1.25"FL | | 30 | 50450 | BELL CRANK, CLUTCH, SS-26 | 1 |
| 6 | 10602 | WASHER, FLAT 1/4 SAE ZINC | 2 | 31 | 50508 | MOUNT, TRANSMISSION, SS-26 | 1 |
| 7 | 10015 | NUT, HEX LOCK 1/4-20 ZINC | 2 | 32 | 10909 | BOLT, CARRIAGE 3/8-16 X 3 | 4 |
| 8 | 50607 | GATE, DRIVE LEVER, SS-26 | 1 | 33 | 10040 | WASHER, GARRET | 4 |
| 9 | 10877 | SCREW, CAP STSHW | 5 | | | 17/32 X 1 X .054 | |
| | | 10-24 X 1/2 | | 34 | 10811 | WASHER, LOCK 3/8 ZINC | 4 |
| 10 | 10321 | SCREW, CAP 1/2-20 X 1-1/4 | 1 | 35 | 10404 | NUT, HEX 3/8-16 ZINC | 4 |
| 11 | 10426 | WASHER, BELLEVILLE | | 36 | 50061 | TRANSMISSION, HYDROSTATIC | 1 |
| | | 1/2ID X 3/64THK | | 37 | 50071 | KEY, WOODRUFF 1/8 X 1/2 | 3 |
| 12 | 50428 | WASHER, FIBER | 1 | | | (#404) | |
| | | 2-1/4OD X 1/2ID X 1/8 | | 38 | 50062 | SHEAVE, TRANS. | 1 |
| 13 | 10312 | WASHER, FLAT 1/2 SAE ZINC | 1 | | | 4"OD X 1GR. X .671"B | |
| 14 | 10205 | NUT, HEX LOCK 1/2-20 ZINC | 1 | 39 | 50266 | FAN BLADE W/ PLATE 7", | 1 |
| 15 | 57124 | LINKAGE, ROD 3/8 X 14-5/8"L | 1 | | | TRANSMISSION | |
| 16 | 50420 | LINKAGE, ROD 3/8 X 5-3/4"L | 1 | 40 | 10038 | WASHER, LOCK 1/4 ZINC | 1 |
| 17 | 10014 | NUT, HEX 3/8-24 ZINC | 3 | 41 | 10018 | SCREW, CAP 1/4-20 X 3/4 | 1 |
| 18 | 10919 | ROD END, FEMALE | 3 | 42 | 50048 | SPROCKET #3511 X .67"BORE | 1 |
| | | 3/8-24 R.H. THREAD | | | | | |
| 19 | 10919L | ROD END, FEMALE | 1 | | | | |
| | | 3/8-24 L.H. THREAD | | | | | |



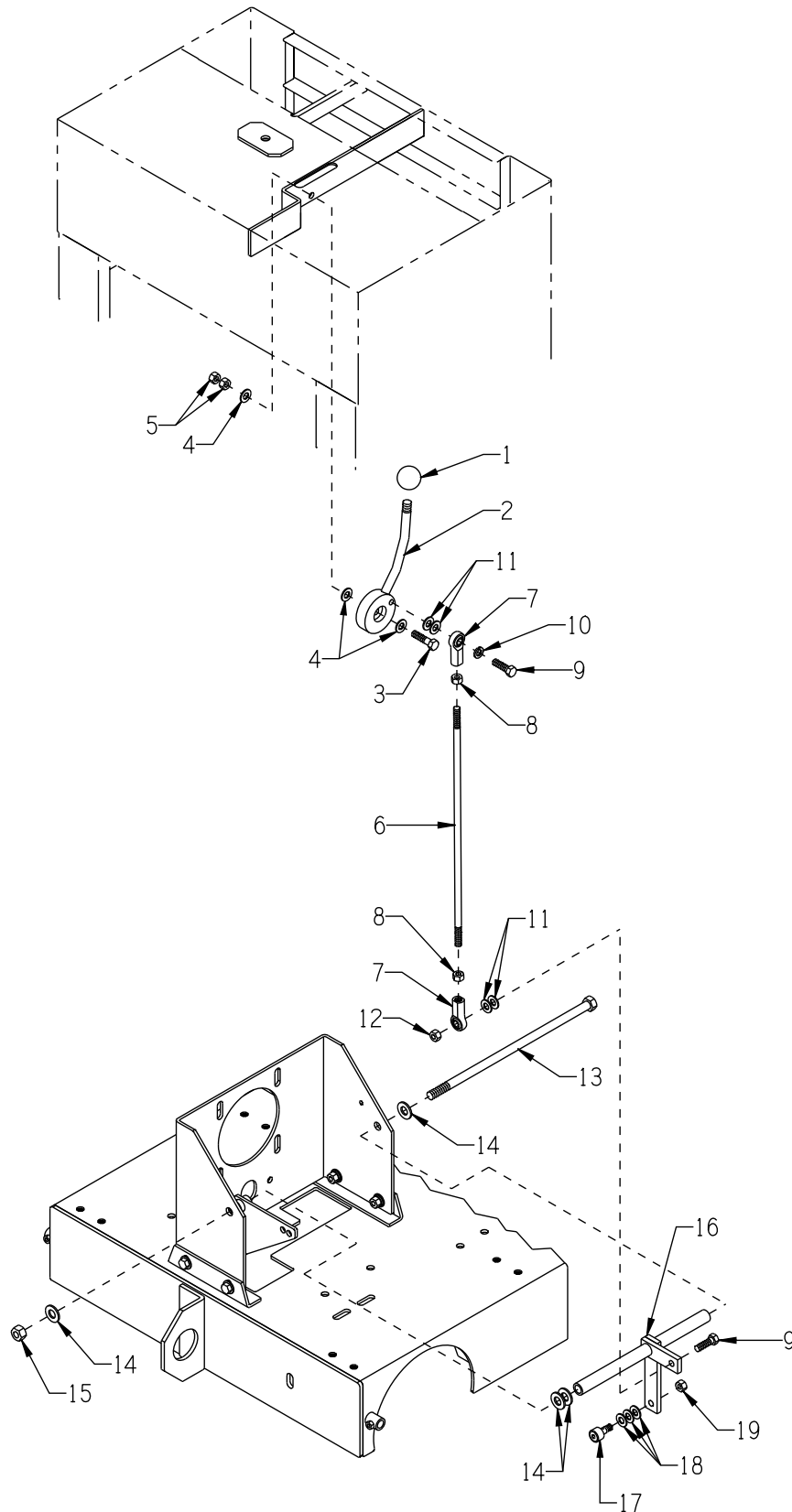
EQUIPMENT DEVELOPMENT COMPANY, INC.

100 Thomas Johnson Drive, Frederick, MD 21702-4600 USA
 Phone: 800-638-3326 or 301-663-1600 • Fax: 800-447-3326 or 301-663-1607
 Website: www.edcoinc.com • E-mail: sales@edcoinc.com

Printed in USA

JWA ©2015

ILLUSTRATION 5: CLUTCH LEVER & LINKAGE GROUPING



| PARTS LISTING - ILLUSTRATION 5: CLUTCH LEVER & LINKAGE GROUPING | | | |
|--|--------|-------------------------------------|------|
| ITEM # | PART # | DESCRIPTION | QTY. |
| 1 | 14023 | KNOB, BALL 1-3/8 W/ 1/2-13THD, BLK. | 1 |
| 2 | 50611 | LEVER, CLUTCH, SS-26 | 1 |
| 3 | 10816 | SCREW, CAP 3/8-24 X 1-1/2 | 1 |
| 4 | 10025 | WASHER, FLAT 3/8 SAE ZINC | 3 |
| 5 | 10004 | NUT, HEX LOCK 3/8-24 ZINC | 2 |
| 6 | 50612 | LINKAGE, ROD 3/8 X 17"L | 1 |
| 7 | 10919 | ROD END, FEMALE 3/8-24 R.H. THREAD | 2 |
| 8 | 10014 | NUT, HEX 3/8-24 ZINC | 2 |
| 9 | 10309 | SCREW, CAP 3/8-24 X 1-1/4 ZINC | 2 |
| 10 | 10811 | WASHER, LOCK 3/8 ZINC | 1 |
| 11 | 10025 | WASHER, FLAT 3/8 SAE ZINC | 4 |
| 12 | 10004 | NUT, HEX LOCK 3/8-24 ZINC | 1 |
| 13 | 10421 | SCREW, CAP 1/2-13 X 13 | 1 |
| 14 | 10312 | WASHER, FLAT 1/2 SAE ZINC | 4 |
| 15 | 10407 | NUT, HEX LOCK 1/2-13 ZINC | 1 |
| 16 | 50450 | BELL CRANK, CLUTCH, SS-26 | 1 |
| 17 | 10924 | CAM FOLLOWER BRG. 3/4" X 3/8-24THD | 1 |
| 18 | 10025 | WASHER, FLAT 3/8 SAE ZINC | 3 |
| 19 | 10004 | NUT, HEX LOCK 3/8-24 ZINC | 1 |


EQUIPMENT DEVELOPMENT COMPANY, INC.

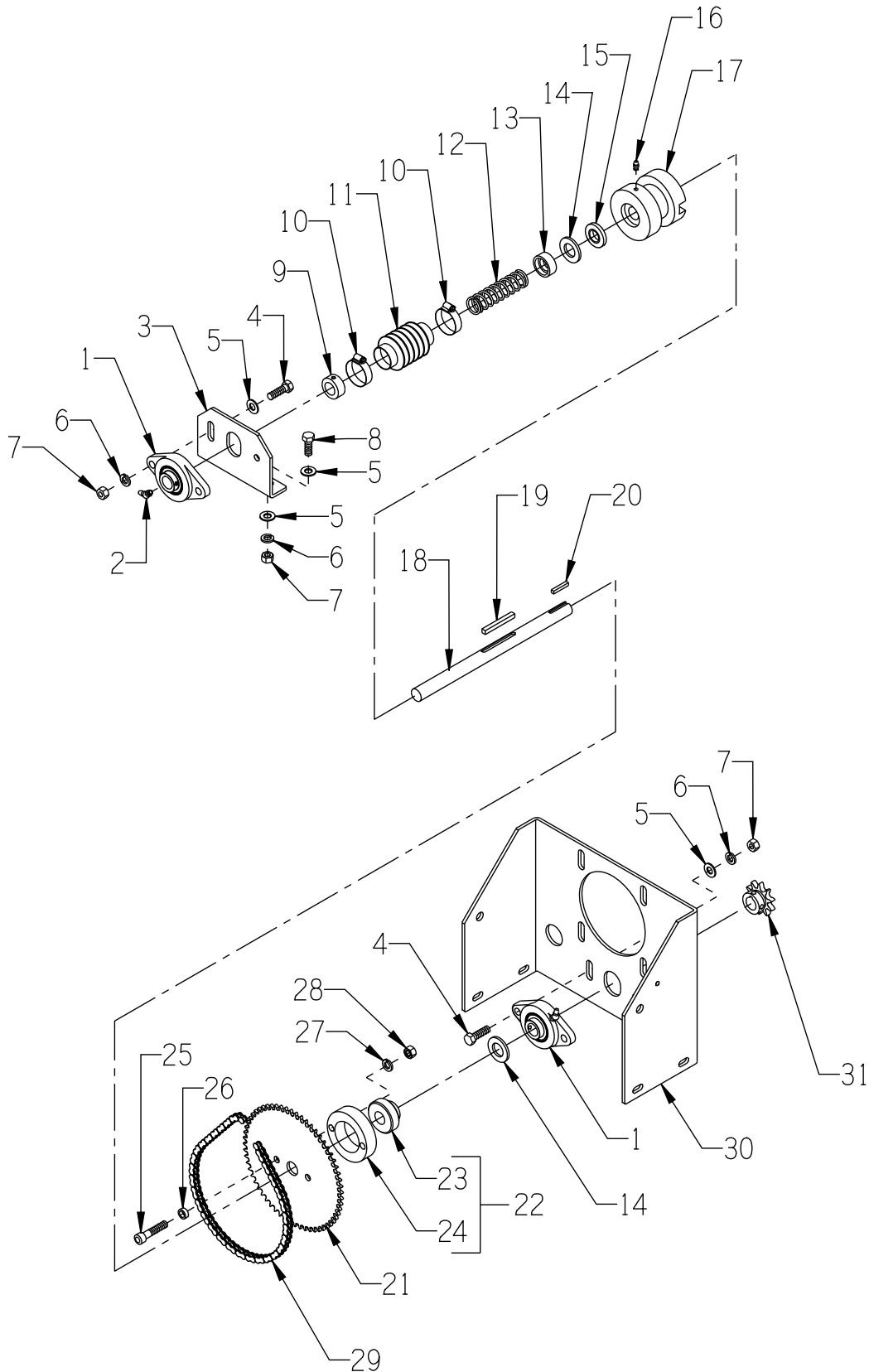
100 Thomas Johnson Drive, Frederick, MD 21702-4600 USA
 Phone: 800-638-3326 or 301-663-1600 • Fax: 800-447-3326 or 301-663-1607
 Website: www.edcoinc.com • E-mail: sales@edcoinc.com

Printed in USA

JWA ©2015

Page 13

ILLUSTRATION 6: CLUTCH GROUPING



| PARTS LISTING - ILLUSTRATION 6: CLUTCH GROUPING | | | |
|---|--------|-------------------------------------|------|
| ITEM # | PART # | DESCRIPTION | QTY. |
| 1 | 50049 | BEARING, BALL 3/4" 2-HOLE FLANGE | 2 |
| 2 | 10960 | FITTING, GREASE 1/4-28 X 45° | 2 |
| 3 | 50509 | MOUNT, JACKSHAFT BEARING | 1 |
| 4 | 10309 | SCREW, CAP 3/8-24 X 1-1/4 ZINC | 2 |
| 5 | 10025 | WASHER, FLAT 3/8 SAE ZINC | 8 |
| 6 | 10811 | WASHER, LOCK 3/8 ZINC | 6 |
| 7 | 10014 | NUT, HEX 3/8-24 ZINC | 6 |
| 8 | 10021 | SCREW, CAP 3/8-24 X 1 | 2 |
| 9 | 10428 | COLLAR, LOCKING 3/4"ID | 1 |
| 10 | 10768 | CLAMP, HOSE, SAE #16, ADJ. TO 1-1/2 | 2 |
| 11 | 10930 | BELLOWS 1-1/4ID X 2-3/8EL X 1-3/4RL | 1 |
| 12 | 10922 | SPRING, COMP. 1"OD X 3.75"FL | 1 |
| 13 | 57044 | CLUTCH SPRING CUP | 1 |
| 14 | 10009 | WASHER, FLAT 3/4 SAE ZINC | 2 |
| 15 | 3695 | SEAL, OIL .750 X 1.375 X .250 | 1 |
| 16 | 10808 | FITTING, GREASE 1/4-28 STRAIGHT | 1 |
| 17 | 57042 | CLUTCH, DOG BLOCK | 1 |
| 18 | 50518 | JACKSHAFT, CLUTCH 11-1/2", SS-26 | 1 |
| 19 | 10307 | KEY 1/4SQ X 2-1/4 | 1 |
| 20 | 50523 | KEY 3/16SQ X 1-1/8 | 1 |
| 21 | 50476 | SPROCKET, CLUTCH #35A60 | 1 |
| 22 | 57038A | BEARING & CARRIER ASSY., CLUTCH | 1 |
| 23 | 57038 | BEARING, BALL 3/4ID X 1.8504"OD | 1 |
| 24 | 57039 | CARRIER, CLUTCH BEARING | 1 |
| 25 | 10354 | SCREW, SKT. HD. CAP 3/8-24 X 1-3/4 | 2 |
| 26 | 10113 | SPACER, STEEL 9/16OD X 3/8ID X 7/32 | 2 |
| 27 | 10811 | WASHER, LOCK 3/8 ZINC | 2 |
| 28 | 10014 | NUT, HEX 3/8-24 ZINC | 2 |
| 29 | 64032 | CHAIN #35 X 24-1/2" + CL | 1 |
| 30 | 50508 | MOUNT, TRANSMISSION, SS-26 | 1 |
| 31 | 50436 | SPROCKET #40B10 X 3/4"BORE | 1 |


EQUIPMENT DEVELOPMENT COMPANY, INC.

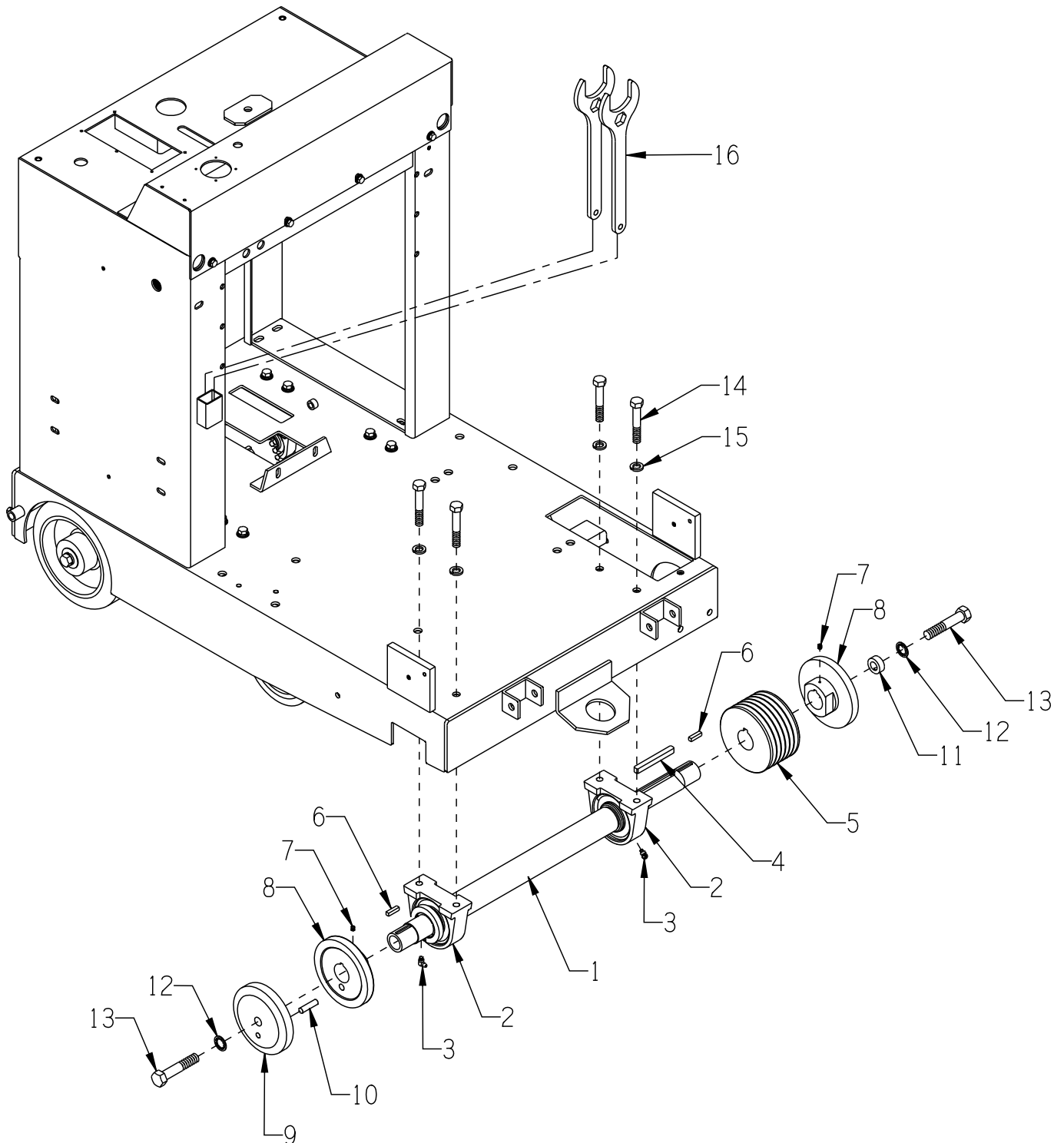
100 Thomas Johnson Drive, Frederick, MD 21702-4600 USA
 Phone: 800-638-3326 or 301-663-1600 • Fax: 800-447-3326 or 301-663-1607
 Website: www.edcoinc.com • E-mail: sales@edcoinc.com

Printed in USA

JWA ©2015

Page 15

ILLUSTRATION 7: ARBOR GROUPING



| PARTS LISTING - ILLUSTRATION 7: ARBOR GROUPING | | | |
|--|----------------|---|------|
| ITEM # | PART # | DESCRIPTION | QTY. |
| 1 | 50720 | ARBOR SHAFT 28-1/8"L, SS-26 | 1 |
| 2 | 10111 | BEARING, BALL 1-1/2" TAP PIL. BLOCK | 2 |
| 3 | 10961 | FITTING, GREASE 1/4-28 X 90° | 2 |
| 4 | 10074 | KEY 3/8SQ X 3-1/2 | 1 |
| 5 | 10512 | SHEAVE 4.80"OD X 6GR.3V X 1-7/16"B (30" BLADE SET-UP) | 1 |
| 6 | 10174 | KEY 1/4SQ X 1 | 2 |
| 7 | 10161 | SCREW, SET 1/4-28 X 5/16 | 2 |
| 8 | 50734 50721 | ARBOR BACKING PLATE 6" (30" BLADE SET-UP) 5" (14" - 26" BLADE SET-UP) | 2 |
| 9 | 57405 57403 | ARBOR BLADE CAP 6" (30" BLADE SET-UP) 5" (14" - 26" BLADE SET-UP) | 1 |
| 10 | 50722 | PIN, SHEAR PROOF 3/8 X 1-1/2 | 1 |
| 11 | 10096 | COLLAR, LOCKING 5/8"ID (SET SCREW REMOVED) | 1 |
| 12 | 10457 | WASHER, LOCK, INT. TOOTH 5/8" | 2 |
| 13 | 10359 | SCREW, CAP 5/8-11 X 3-1/4 | 2 |
| 14 | 10499 | SCREW, CAP 1/2-13 X 3 | 4 |
| 15 | 10045 | WASHER, LOCK 1/2 ZINC | 4 |
| 16 | 57406 | WRENCH, ARBOR, 2" & 15/16" COMBO | 2 |


EQUIPMENT DEVELOPMENT COMPANY, INC.

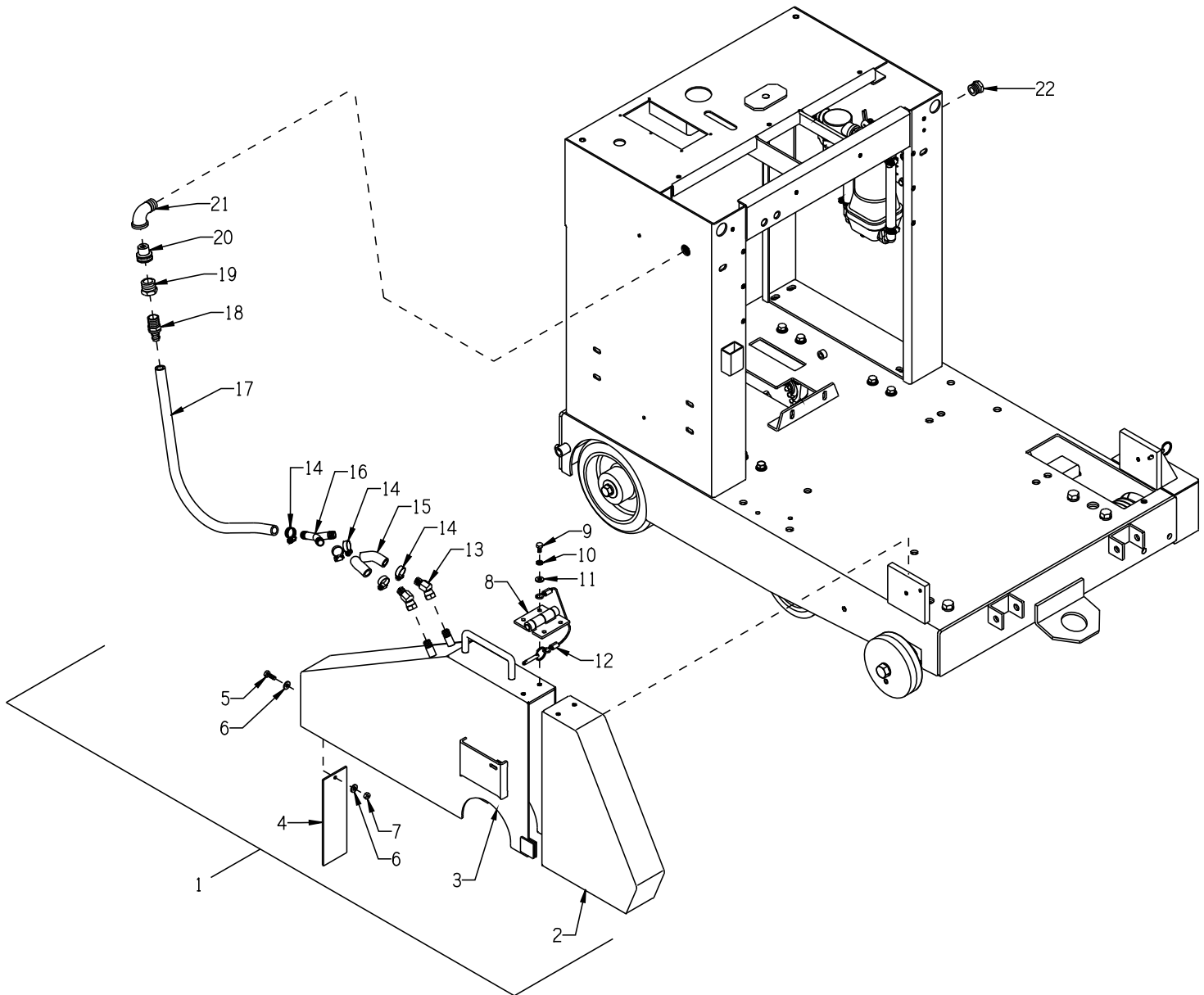
100 Thomas Johnson Drive, Frederick, MD 21702-4600 USA
 Phone: 800-638-3326 or 301-663-1600 • Fax: 800-447-3326 or 301-663-1607
 Website: www.edcoinc.com • E-mail: sales@edcoinc.com

Printed in USA

JWA ©2015

Page 17

ILLUSTRATION 8: BLADE GUARD GROUPING



| PARTS LISTING - ILLUSTRATION 8: BLADE GUARD GROUPING | | | |
|--|--|---|------|
| ITEM # | PART # | DESCRIPTION | QTY. |
| 1 | 50735A* 57449A* 57450A* 57451A* | BLADE GUARD ASSEMBLY (ITEMS 2 THRU 16) *NOTE: DROP "A" SUFFIX FOR ITEMS 2, 3, 8, 9 10, & 11. 30" BLADE 24" - 26" BLADE (SHOWN) 18" - 20" BLADE 14" - 16" BLADE | 1 |
| 2 | 50735F 57449F 57450F 57451F | BLADE GUARD FRONT ONLY 30" BLADE 24" - 26" BLADE (SHOWN) 18" - 20" BLADE 14" - 16" BLADE | 1 |
| 3 | 50735R 57449R 57450R 57451R | BLADE GUARD REAR ONLY 30" BLADE 24" - 26" BLADE (SHOWN) 18" - 20" BLADE 14" - 16" BLADE | 1 |
| 4 | 41115 | FLAP, RUBBER 2-1/2 X 8 | 1 |
| 5 | 10018 | SCREW, CAP 1/4-20 X 3/4 | 1 |
| 6 | 10602 | WASHER, FLAT 1/4 SAE ZINC | 2 |
| 7 | 10015 | NUT, HEX LOCK 1/4-20 ZINC | 1 |
| 8 | 11617 | HINGE, BUTT 3 X 3 X 7GA. | 1 |
| 9 | 10834 | SCREW, CAP 1/4-20 X 1/2 ZINC | 4 |
| 10 | 10038 | WASHER, LOCK 1/4 ZINC | 4 |
| 11 | 10602 | WASHER, FLAT 1/4 SAE ZINC | 1 |
| 12 | 57482 57483 57484 57485 | PIN & CABLE 30" BLADE GUARD 24" - 26" BLADE GUARD 18" - 20" BLADE GUARD 14" - 16" BLADE GUARD | 1 |
| 13 | 10710 | FITTING, SWIVEL 45, 1/4NPT HYD. | 2 |
| 14 | 50069 | CLAMP, HOSE, SAE #6, ADJ. TO 13/16 | 5 |
| 15 | 50532 | HOSE, WATER 1/2"ID X 2"L | 2 |
| 16 | 10682 | BARBED FITTING, "Y" 1/2"HOSE | 1 |
| 17 | 57194 57183 57140 | HOSE 1/2"ID 22"L FOR 30" GUARD 24"L FOR 24" - 26" GUARD 26"L FOR 14" - 16" & 18" - 20" GUARDS | 1 |
| 18 | 80061 | BARB, PUSH-ON 1/2HOSE X 1/2MPT | 1 |
| 19 | 10780 | CONN., MALE 3/4NH X 1/2FPT (BRASS) | 1 |
| 20 | 80021 | CONN., SWIVEL FEM. 3/4HOSE X 1/2MPT | 1 |
| 21 | 10724 | ELBOW, STREET 1/2NPT X 90 (BLACK) | 1 |
| 22 | 50552 | PIPE PLUG 1/2 NPT (BRASS) | 1 |


EQUIPMENT DEVELOPMENT COMPANY, INC.

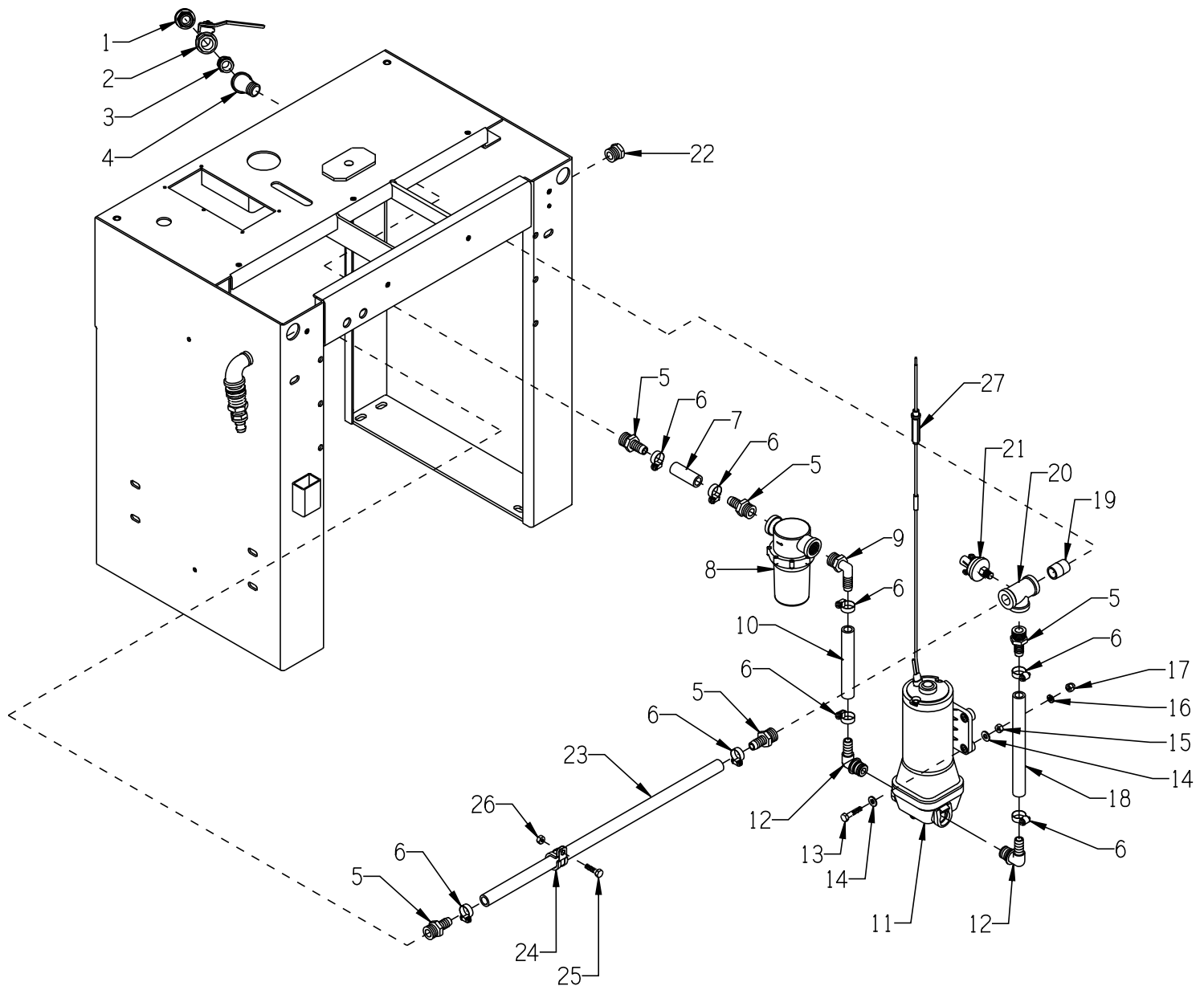
100 Thomas Johnson Drive, Frederick, MD 21702-4600 USA
 Phone: 800-638-3326 or 301-663-1600 • Fax: 800-447-3326 or 301-663-1607
 Website: www.edcoinc.com • E-mail: sales@edcoinc.com

Printed in USA

JWA ©2015

Page 19

ILLUSTRATION 9: WATER PUMP GROUPING



| PARTS LISTING - ILLUSTRATION 9: WATER PUMP GROUPING | | | |
|---|--------|---|------|
| ITEM # | PART # | DESCRIPTION | QTY. |
| 1 | 80021 | CONN., SWIVEL FEM. 3/4HOSE X 1/2MPT | 1 |
| 2 | 10711A | VALVE & HOSE CONNECTOR ASSY. | 1 |
| | 10711 | VALVE, BALL 1/2 FPT | 1 |
| 3 | 10679 | NIPPLE, HEX 1/2NPT (BRASS) | 1 |
| 4 | 10734 | ELBOW, STREET 1/2NPT X 45 (BLACK) | 1 |
| 5 | 10680 | BARB, 1/2HOSE X 1/2MPT (PLASTIC) | 5 |
| 6 | 50069 | CLAMP, HOSE, SAE #6, ADJ. TO 13/16 | 8 |
| 7 | 50532 | HOSE, WATER 1/2"ID X 2"L | 1 |
| 8 | 57170 | STRAINER, NYLON T-STYLE 1/2FPT | 1 |
| 9 | 50471 | BARB ELBOW 90, 1/2HOSE X 1/2MPT | 1 |
| 10 | 57168 | HOSE, WATER 1/2"ID X 4-7/8"L | 1 |
| 11 | 50470 | PUMP, WATER, 12VDC, FLOJET QUAD (INCLUDES ITEM 12) | 1 |
| 12 | 50469 | PUMP QUAD PORT BARB ELBOW 1/2" (INCLUDED W/ PUMP, ITEM 11) | 2 |
| 13 | 10905 | SCREW, CAP 1/4-20 X 1-1/4 | 4 |
| 14 | 10602 | WASHER, FLAT 1/4 SAE ZINC | 8 |
| 15 | 10015 | NUT, HEX LOCK 1/4-20 ZINC | 4 |
| 16 | 10038 | WASHER, LOCK 1/4 ZINC | 4 |
| 17 | 10876 | NUT, ACORN 1/4-20 | 4 |
| 18 | 57176 | HOSE, WATER 1/2"ID X 7-1/4"L | 1 |
| 19 | 10728 | PIPE NIPPLE, CLOSE 1/2NPT (BLACK) | 1 |
| 20 | 50525 | PIPE TEE, WATER PRESS. SW. 1/2 NPT | 1 |
| 21 | 51030 | SWITCH, PRESSURE, 76061 2 N/C | 1 |
| 22 | 50552 | PIPE PLUG 1/2 NPT (BRASS) | 1 |
| 23 | 50655 | HOSE, WATER 1/2"ID X 20"L, SS-26 | 1 |
| 24 | 11565 | CLAMP, LOOM, 5/8" (SAE SIZE 10) RUBBER PIECE REMOVED | 1 |
| 25 | 10031 | SCREW, CAP 1/4-20 X 1 | 1 |
| 26 | 10861 | NUT, KEPS LOCK 1/4-20 ZINC | 1 |
| 27 | 50447 | FUSE & HOLDER, 10 AMP | 1 |

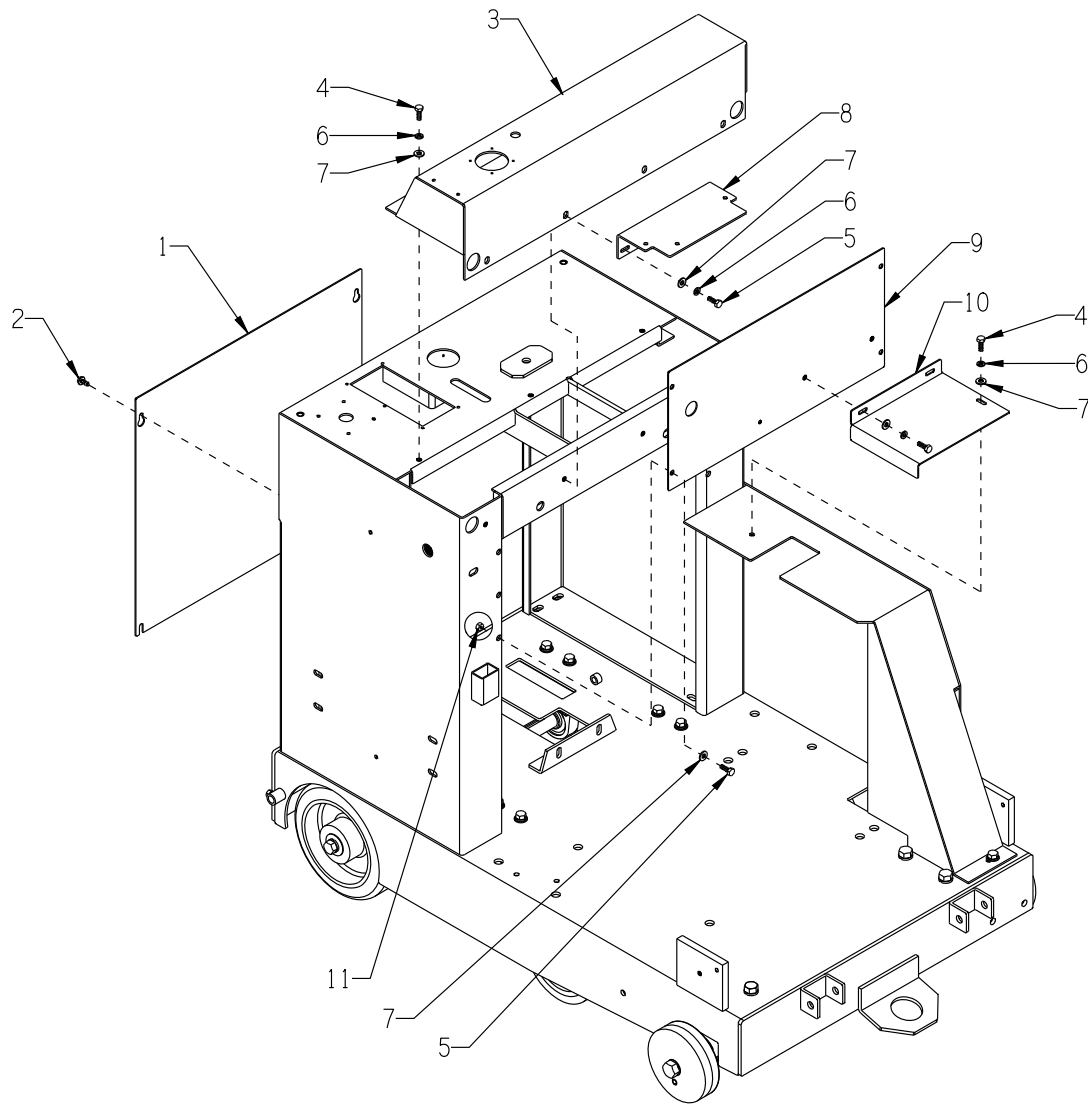

EQUIPMENT DEVELOPMENT COMPANY, INC.

100 Thomas Johnson Drive, Frederick, MD 21702-4600 USA
 Phone: 800-638-3326 or 301-663-1600 • Fax: 800-447-3326 or 301-663-1607
 Website: www.edcoinc.com • E-mail: sales@edcoinc.com

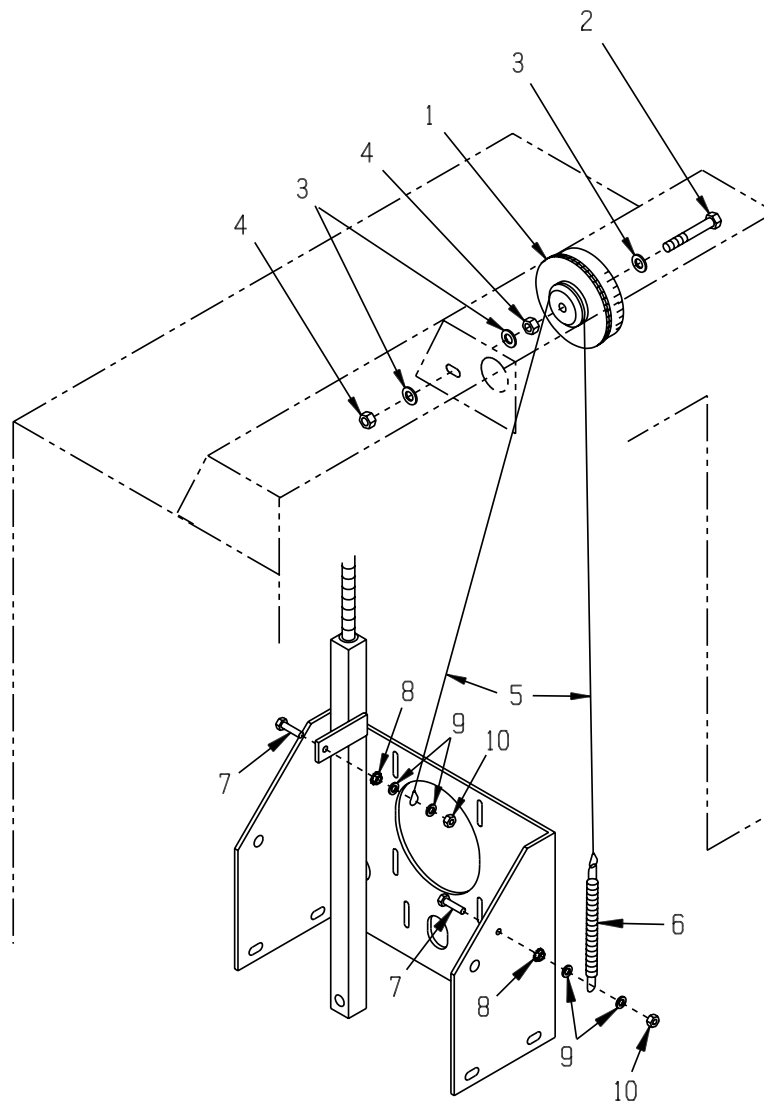
Printed in USA

JWA ©2015

Page 21

ILLUSTRATION 10: INSTRUMENT PANEL, CONSOLE FRONT & REAR PANEL GROUPING

| ITEM # | PART # | DESCRIPTION | QTY. |
|--------|--------|------------------------------------|------|
| 1 | 50674 | BACK PANEL, SS26-15B | 1 |
| 2 | 10846 | SCREW, CAP STSHW 1/4-20 X 1/2 | 4 |
| 3 | 50651E | INSTRUMENT PANEL, SS26-15B | 1 |
| 4 | 10018 | SCREW, CAP 1/4-20 X 3/4 | 5 |
| 5 | 10031 | SCREW, CAP 1/4-20 X 1 | 2 |
| 6 | 10038 | WASHER, LOCK 1/4 ZINC | 10 |
| 7 | 10602 | WASHER, FLAT 1/4 SAE ZINC | 14 |
| 8 | 50664 | MOUNTING BRKT., CONTROL BOX, SS26E | 1 |
| 9 | 50668 | CONSOLE FRONT COVER, SS26E | 1 |
| 10 | 50669 | ALTERNATOR COVER, SS26E | 1 |
| 11 | 10150 | NUT, HEX NYLON LOCK 1/4-20 ZINC | 4 |

ILLUSTRATION 11: BLADE DEPTH GAUGE GROUPING

| ITEM # | PART # | DESCRIPTION | QTY. |
|--------|--------|---------------------------------|------|
| 1 | 57132 | WHEEL, DEPTH GAUGE | 1 |
| 2 | 10336 | SCREW, CAP 3/8-24 X 2-1/4 | 1 |
| 3 | 10025 | WASHER, FLAT 3/8 SAE ZINC | 3 |
| 4 | 10004 | NUT, HEX LOCK 3/8-24 ZINC | 2 |
| 5 | 57143 | CABLE, DEPTH GAUGE 3/32 X 34"L | 1 |
| 6 | 3636 | SPRING, EXT. 6"L | 1 |
| 7 | 10031 | SCREW, CAP 1/4-20 X 1 | 2 |
| 8 | 10861 | NUT, KEPS LOCK 1/4-20 ZINC | 2 |
| 9 | 10602 | WASHER, FLAT 1/4 SAE ZINC | 4 |
| 10 | 10150 | NUT, HEX NYLON LOCK 1/4-20 ZINC | 2 |

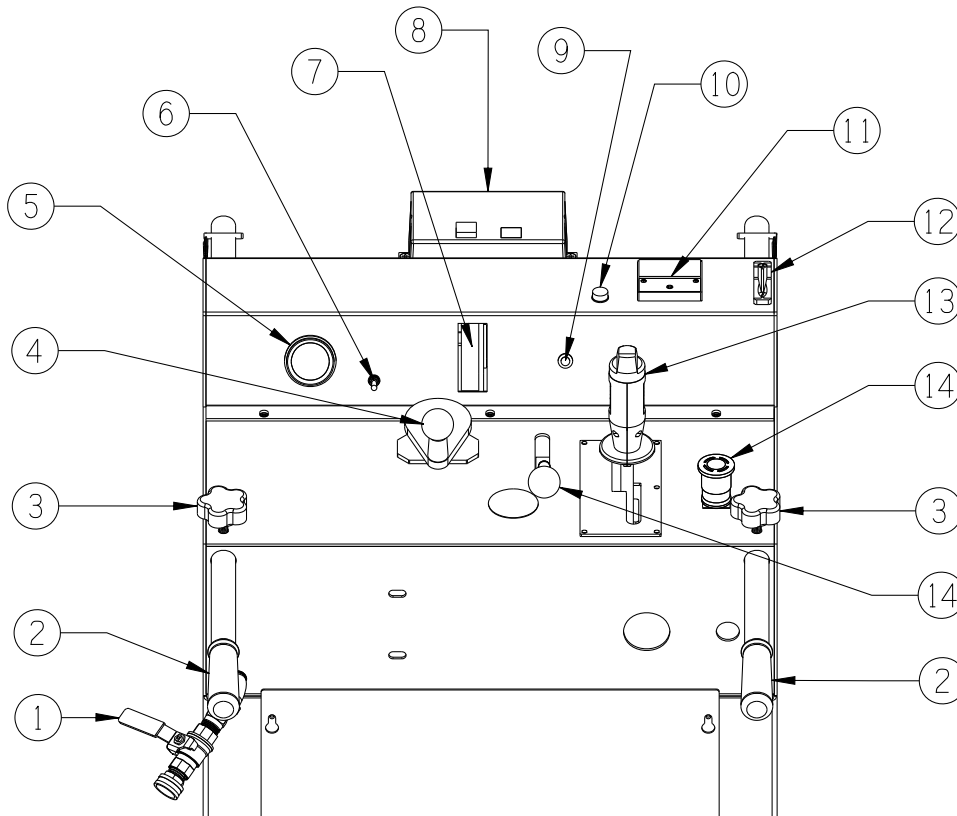


EQUIPMENT DEVELOPMENT COMPANY, INC.
 100 Thomas Johnson Drive, Frederick, MD 21702-4600 USA
 Phone: 800-638-3326 or 301-663-1600 • Fax: 800-447-3326 or 301-663-1607
 Website: www.edcoinc.com • E-mail: sales@edcoinc.com

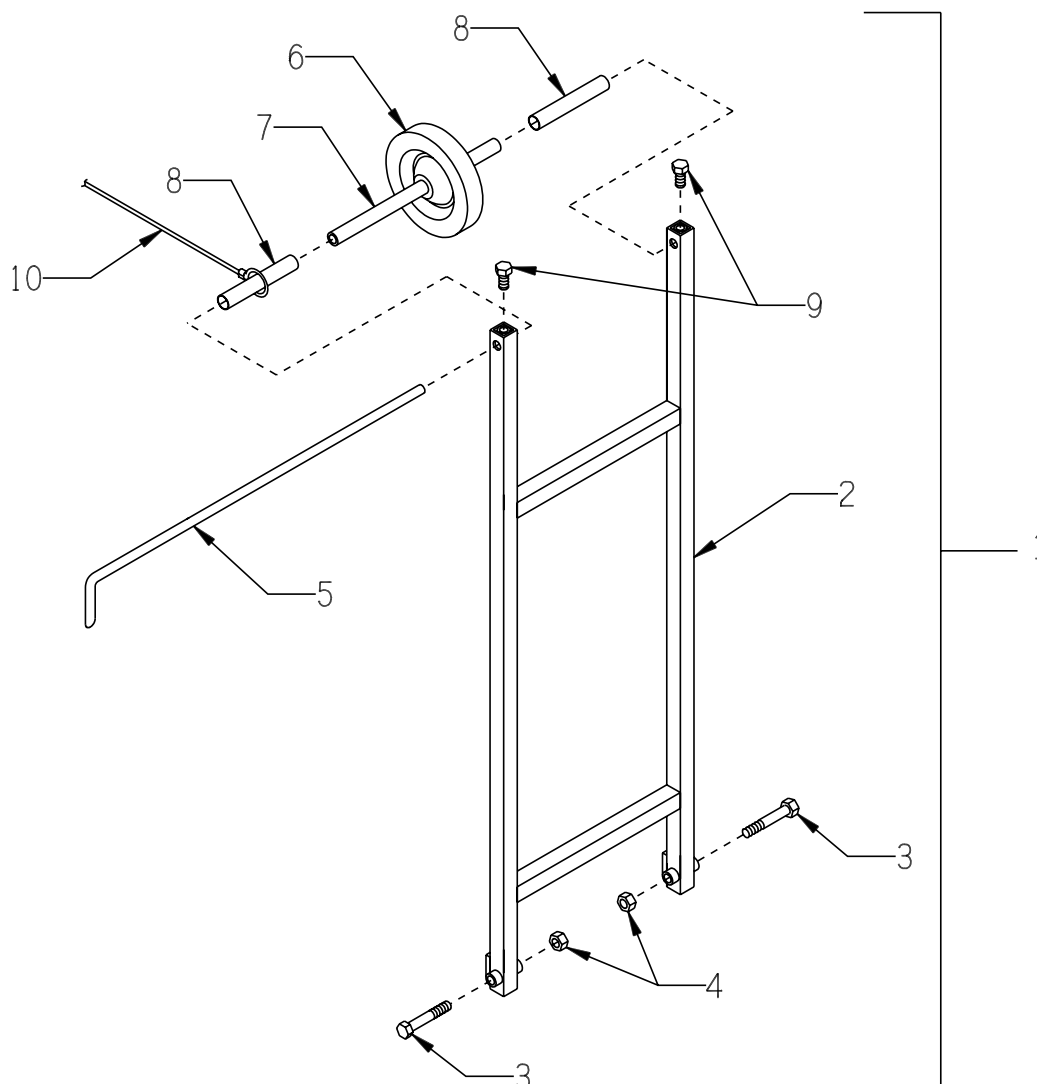
Printed in USA

JWA ©2015

Page 23

ILLUSTRATION 12: OPERATING CONTROLS

| ITEM # | PART # | DESCRIPTION | QTY. |
|--------|--------|---|------|
| 1 | ----- | WATER HOOK-UP AND VALVE (ILLUS. 9) | 1 |
| 2 | ----- | EXTENDABLE HANDLES (ILLUS. 1) | 2 |
| 3 | 51230 | HANDLE LOCK KNOB, STAR CLAMPING 3/8-16 X 1"STUD (ILLUS. 1) | 2 |
| 4 | ----- | DEPTH CONTROL (ILLUS. 2) | 1 |
| 5 | 10637 | METER, HOUR 2-1/16" | 1 |
| 6 | 10633 | "WATER PUMP" SWITCH, TOGGLE SPST | 1 |
| 7 | ----- | DEPTH INDICATOR (ILLUS. 11) | 1 |
| 8 | ----- | ON/OFF STARTER BOX (ILLUS. 18) | 1 |
| 9 | 10633 | "BATTERY SAVER" SWITCH, TOGGLE SPST | 1 |
| 10 | 16544 | "LOW WATER PRESSURE ALERT" LAMP, 12V JUMBO RED | 1 |
| 11 | 16543 | AMMETER, AC ANALOG 0-50 AMP | 1 |
| 12 | 11591 | ROPE CLEAT, NYLON JAM 3/16"-5/16" | 1 |
| | 11594 | SCREW, MACHINE 10-32 X 5/8, SLT.FLT | 2 |
| | 10832 | NUT, KEPS LOCK 10-32 ZINC | 2 |
| 13 | ----- | DRIVE LEVER W/ BLADE LIFT/LOWER SWITCH (ILLUS. 4) | 1 |
| 14 | ----- | EMERGENCY STOP SWITCH (ILLUS. 18) | 1 |
| 15 | ----- | CLUTCH CONTROL LEVER (ILLUS. 6) | 1 |

ILLUSTRATION 13: GUIDE BAR ASSEMBLY

| ITEM # | PART # | DESCRIPTION | QTY. |
|--------|--------|---|------|
| 1 | 57119A | GUIDE BAR ASSEMBLY (INCLUDES ITEMS 2 THRU 9) | 1 |
| 2 | 57119 | GUIDE BAR | 1 |
| 3 | 10202 | SCREW, CAP 1/2-20 X 3 | 2 |
| 4 | 10154 | NUT, HEX NYLON LOCK 1/2-20 ZINC | 2 |
| 5 | 50514 | POINTER, FRONT 24-1/2" | 1 |
| 6 | 50536 | WHEEL 5 X 1-1/2 X 3/4" BORE | 1 |
| 7 | 57120 | AXLE TUBE, GUIDE WHEEL | 1 |
| 8 | 57171 | SPACER TUBE 5-1/16, GUIDE BAR WHEEL | 2 |
| 9 | 10304 | SCREW, CAP 1/2-20 X 1 | 2 |
| 10 | 50555 | ROPE, GUIDE BAR (NOT INCLUDED W/ GUIDE BAR ASSY.) | 1 |

**EQUIPMENT DEVELOPMENT COMPANY, INC.**

100 Thomas Johnson Drive, Frederick, MD 21702-4600 USA
 Phone: 800-638-3326 or 301-663-1600 • Fax: 800-447-3326 or 301-663-1607
 Website: www.edcoinc.com • E-mail: sales@edcoinc.com

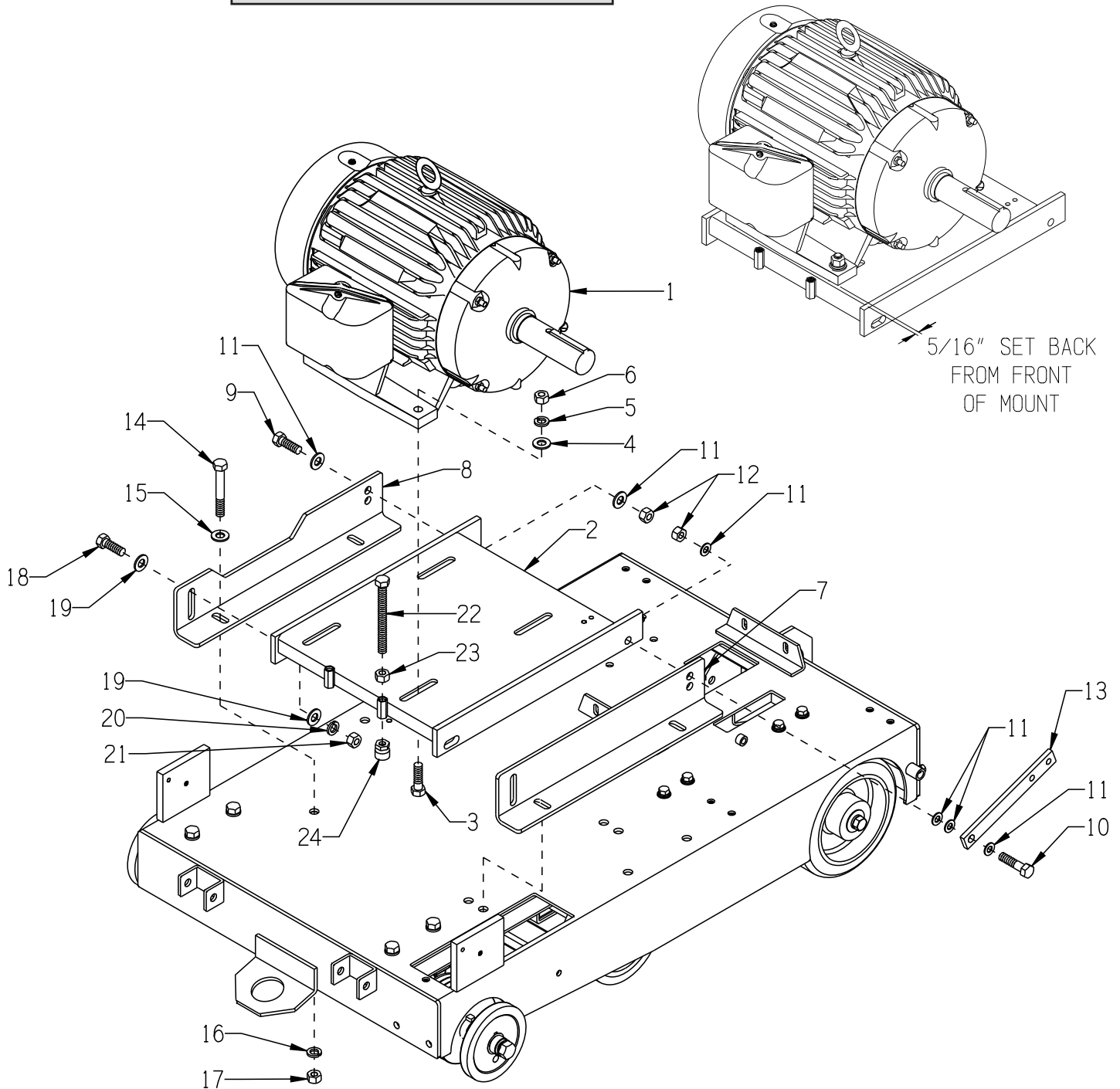
Printed in USA

JWA ©2015

Page 25

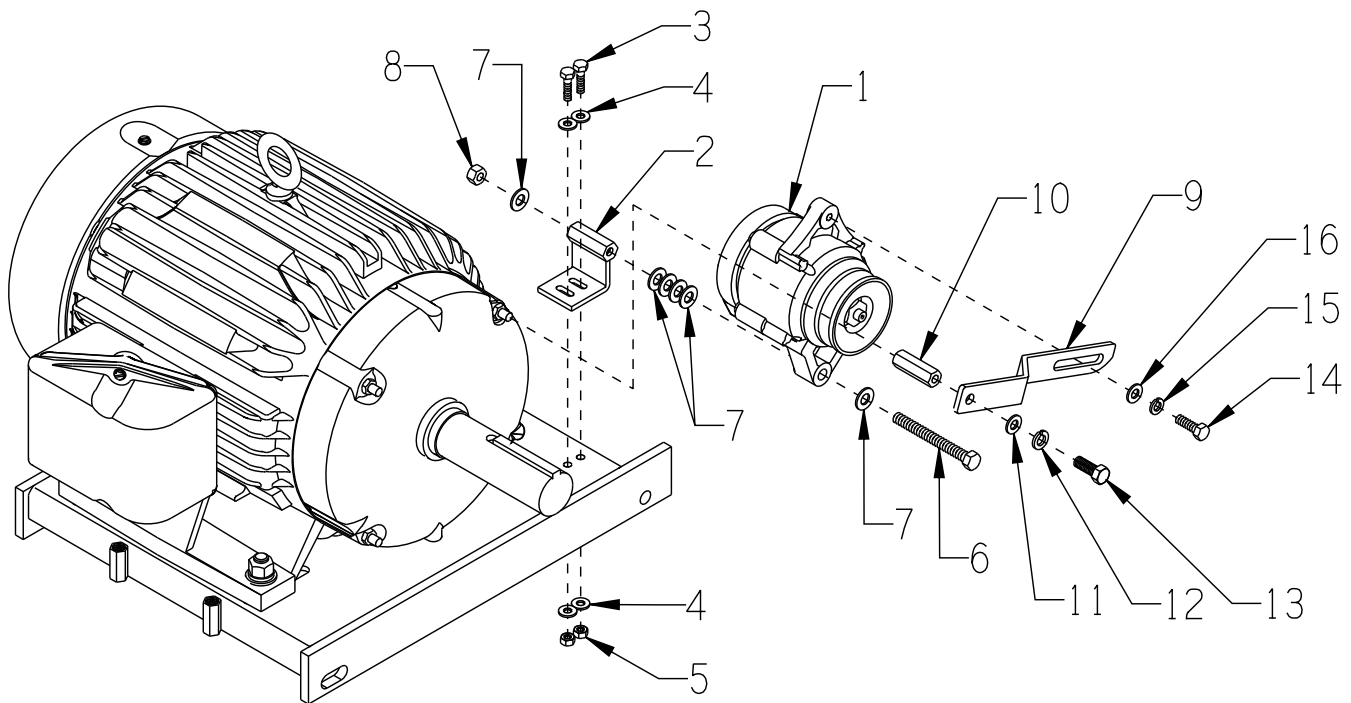
**ILLUSTRATION 14:
MOTOR & MOUNT GROUPING**

MOTOR SETTING

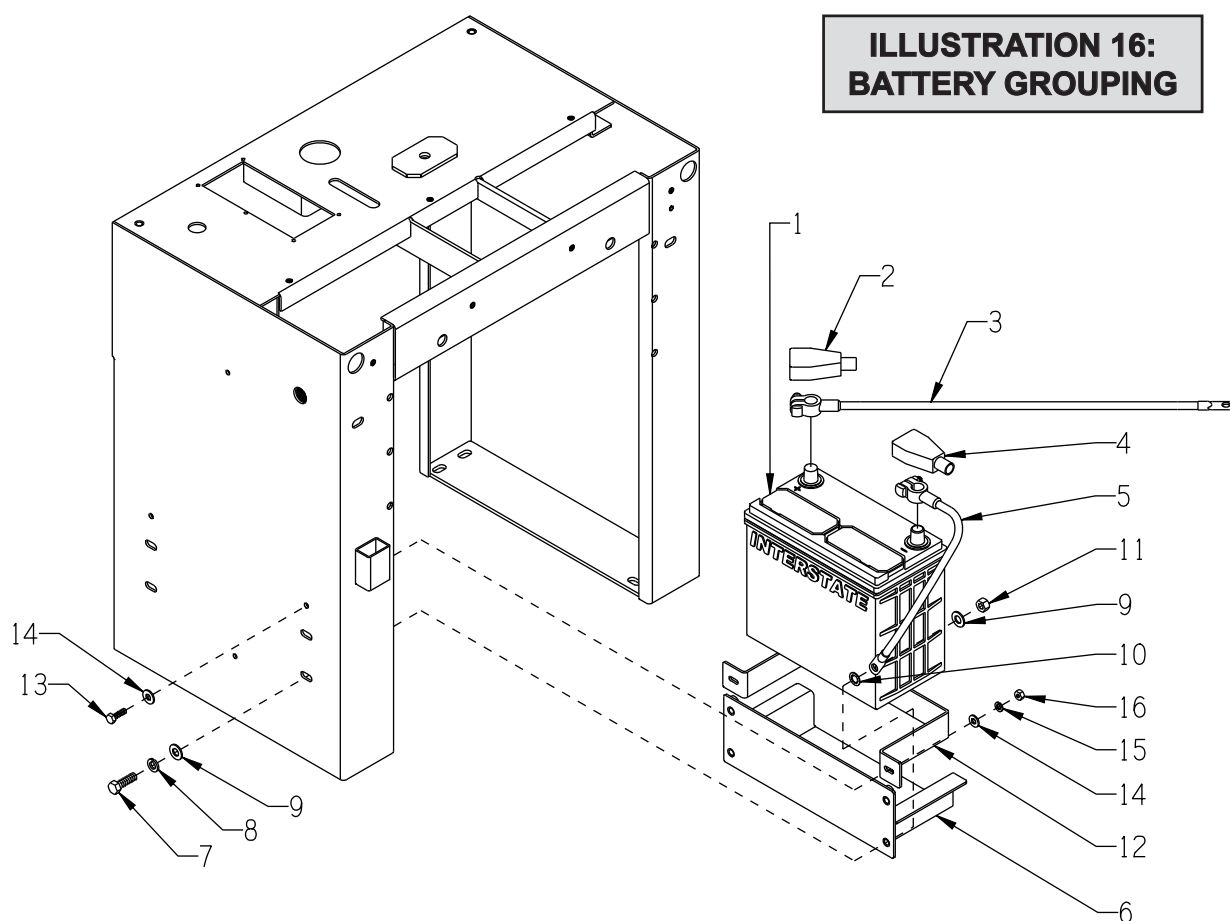


| PARTS LISTING - ILLUSTRATION 14: MOTOR & MOUNT GROUPING | | | |
|---|----------------|---|------|
| ITEM # | PART # | DESCRIPTION | QTY. |
| 1 | 16076 16085 | MOTOR BALDOR 15HP-3PH-60HZ-1755RPM BALDOR 15HP-3PH-50HZ-1460RPM | 1 |
| 2 | 50506E | MOUNT, MOTOR, SS26-15B | 1 |
| 3 | 10498 | SCREW, CAP 1/2-20 X 1-3/4 | 4 |
| 4 | 10312 | WASHER, FLAT 1/2 SAE ZINC | 4 |
| 5 | 10045 | WASHER, LOCK 1/2 ZINC | 4 |
| 6 | 10072 | NUT, HEX 1/2-20 ZINC | 4 |
| 7 | 50507 | BRACKET, ENGINE/MOTOR MOUNT, SS26-15B | 1 |
| 8 | 50507E | BRACKET, MOTOR MOUNT, SS-26 ELEC. | 1 |
| 9 | 10308 | SCREW, CAP 1/2-20 X 1-1/2 | 1 |
| 10 | 10322 | SCREW, CAP 1/2-20 X 2 | 1 |
| 11 | 10312 | WASHER, FLAT 1/2 SAE ZINC | 6 |
| 12 | 10205 | NUT, HEX LOCK 1/2-20 ZINC | 2 |
| 13 | 50544 | ARM, IDLER, SS-26 | 1 |
| 14 | 10324 | SCREW, CAP 1/2-13 X 3-1/2 | 4 |
| 15 | 10312 | WASHER, FLAT 1/2 SAE ZINC | 4 |
| 16 | 10045 | WASHER, LOCK 1/2 ZINC | 4 |
| 17 | 10417 | NUT, HEX 1/2-13 ZINC | 4 |
| 18 | 10356 | SCREW, CAP 1/2-13 X 1-1/2 | 2 |
| 19 | 10312 | WASHER, FLAT 1/2 SAE ZINC | 4 |
| 20 | 10045 | WASHER, LOCK 1/2 ZINC | 2 |
| 21 | 10417 | NUT, HEX 1/2-13 ZINC | 2 |
| 22 | 10373 | BOLT, TAP 1/2-13 X 5 (FULL THREAD) | 2 |
| 23 | 10417 | NUT, HEX 1/2-13 ZINC | 2 |
| 24 | 50710 | TOGGLE PAD 7/8"D X 15/16"H X 1/2-13 | 2 |



ILLUSTRATION 15: ALTERNATOR GROUPING

| ITEM # | PART # | DESCRIPTION | QTY. |
|--------|--------|---|------|
| 1 | 15260 | ALTERNATOR, 12V/40A MINI ONE-WIRE | 1 |
| 2 | 50672 | ALTERNATOR BRACKET, SS26E | 1 |
| 3 | 10031 | SCREW, CAP 1/4-20 X 1 | 2 |
| 4 | 10602 | WASHER, FLAT 1/4 SAE ZINC | 4 |
| 5 | 10015 | NUT, HEX LOCK 1/4-20 ZINC | 2 |
| 6 | 52015 | BOLT, TAP 3/8-16 X 3-1/2(FULL THD.) | 1 |
| 7 | 10025 | WASHER, FLAT 3/8 SAE ZINC (SPACE AS REQ'D.) | 6 |
| 8 | 10810 | NUT, HEX LOCK 3/8-16 ZINC | 1 |
| 9 | 50671 | ALTERNATOR TENSIONER BRKT, SS26E | 1 |
| 10 | 10447 | ROD COUPLING 3/8-16 X 1-3/4 | 1 |
| 11 | 10025 | WASHER, FLAT 3/8 SAE ZINC | 1 |
| 12 | 10811 | WASHER, LOCK 3/8 ZINC | 1 |
| 13 | 10055 | SCREW, CAP 3/8-16 X 1 | 1 |
| 14 | 10806 | SCREW, CAP 5/16-18 X 1 | 1 |
| 15 | 10801 | WASHER, LOCK 5/16 ZINC | 1 |
| 16 | 10213 | WASHER, FLAT 5/16 SAE ZINC | 1 |

**ILLUSTRATION 16:
BATTERY GROUPING**


| ITEM # | PART # | DESCRIPTION | QTY. |
|--------|----------------|--|--------|
| 1 | 50321 | BATTERY 12 VOLT/500 CCA(POST TERM.) INTERSTATE MT-51R | 1 |
| 2 | 10928 | INSULATOR, BAT.TERM.POST (RED) | 1 |
| 3 | 50324R | CABLE, BATTERY 4GA. X 24" (RED) | 1 |
| 4 | 10929 | INSULATOR, BAT.TERM.POST (BLACK) | 1 |
| 5 | 50323B | CABLE, BATTERY 4GA. X 12" (BLACK) | 1 |
| 6 | 50677 | TRAY, BATTERY, SS26-35K/15B NOTE: TRAY FOR INTERSTATE MT-51R BATTERY. | 1 |
| 7 | 10333 10907 | SCREW, CAP 3/8-16 X 1-1/4 SCREW, CAP 3/8-16 X 3/4 | 1 3 |
| 8 | 10811 | WASHER, LOCK 3/8 ZINC | 4 |
| 9 | 10025 | WASHER, FLAT 3/8 SAE ZINC | 5 |
| 10 | 10453 | WASHER, LOCK, INT. TOOTH 3/8" | 1 |
| 11 | 10404 | NUT, HEX 3/8-16 ZINC | 1 |
| 12 | 50678 | STRAP, BATTERY, SS26-35K/15B NOTE: STRAP FOR INTERSTATE MT-51R BATTERY. | 1 |
| 13 | 10031 | SCREW, CAP 1/4-20 X 1 | 2 |
| 14 | 10602 | WASHER, FLAT 1/4 SAE ZINC | 4 |
| 15 | 10038 | WASHER, LOCK 1/4 ZINC | 2 |
| 16 | 10015 | NUT, HEX LOCK 1/4-20 ZINC | 2 |


EQUIPMENT DEVELOPMENT COMPANY, INC.

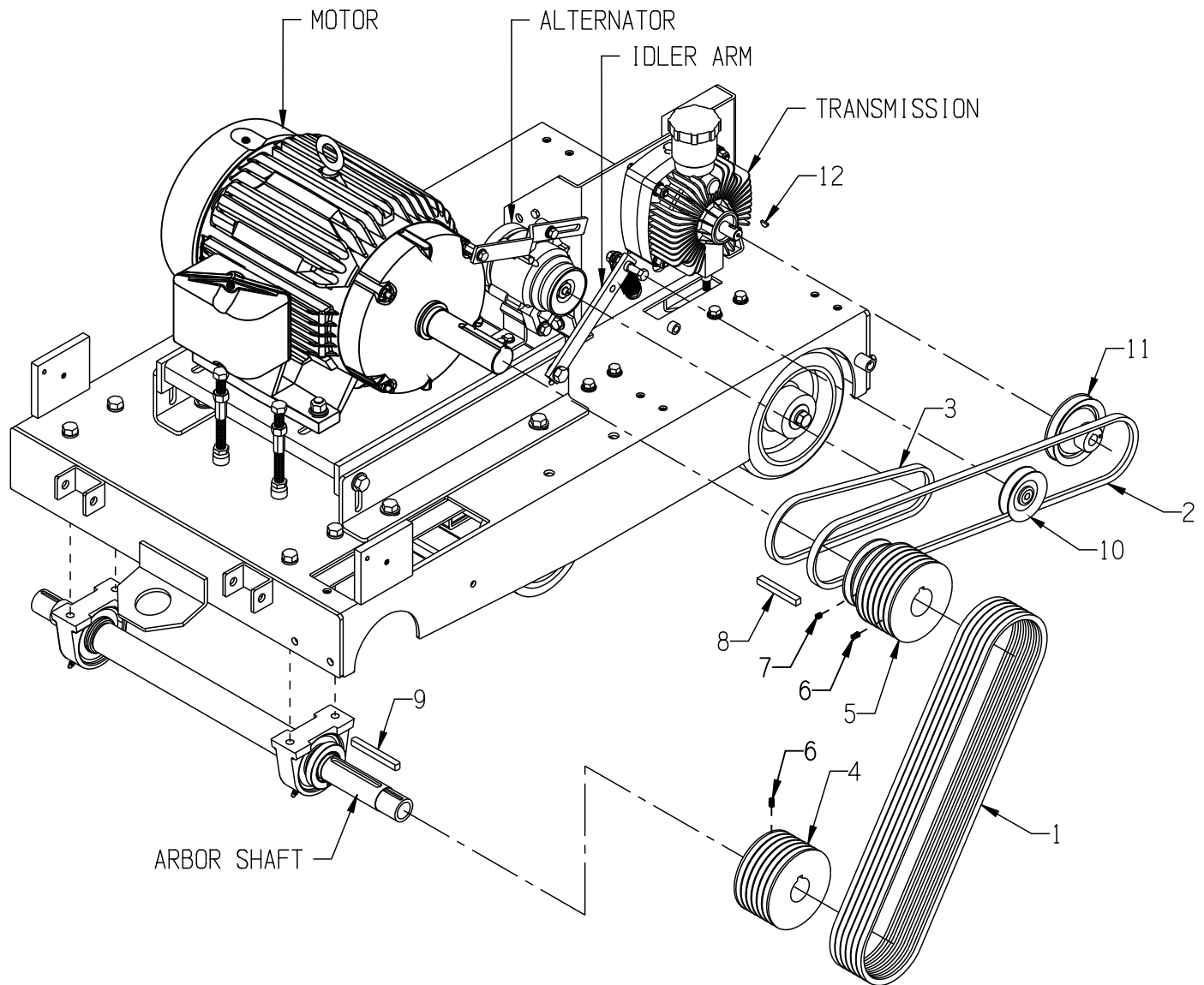
100 Thomas Johnson Drive, Frederick, MD 21702-4600 USA
 Phone: 800-638-3326 or 301-663-1600 • Fax: 800-447-3326 or 301-663-1607
 Website: www.edcoinc.com • E-mail: sales@edcoinc.com

Printed in USA

JWA ©2015

Page 29

ILLUSTRATION 17: BELT DRIVE GROUPING



| PARTS LISTING - ILLUSTRATION 17: BELT DRIVE GROUPING | | | |
|--|--------|--|------|
| ITEM # | PART # | DESCRIPTION | QTY. |
| 1 | 10235 | BELT 3VX-475 | 6 |
| 2 | 10284 | BELT A-55 | 1 |
| 3 | 10262 | BELT A-28 | 1 |
| 4 | 10512 | SHEAVE 4.80"OD X 6GR.3V X 1-7/16"B | 1 |
| 5 | 50676 | SHEAVE (2 SHEAVES WELDED TOGETHER) 50673 - 4"DIA. X (2) A-GROOVES X 1-5/8"B 50675 - 4.8"DIA. X (6) 3V-GROOVES X 1-5/8"BORE | 1 |
| 6 | 11854 | SCREW, SET 10-32 X 1/2 | 8 |
| 7 | 10139 | SCREW, SET 1/4-20 X 5/16 | 2 |
| 8 | ----- | KEY 3/8SQ X 2-7/8 (INCLUDED W/ MOTOR) | 1 |
| 9 | 10074 | KEY 3/8SQ X 3-1/2 | 1 |
| 10 | 50115 | IDLER PULLEY 3"OD X 1GR.AB X 3/8"B | 1 |
| 11 | 50062 | SHEAVE, TRANS. 4"OD X 1GR. X .671"B | 1 |
| 12 | 50071 | KEY, WOODRUFF 1/8 X 1/2 (#404) | 1 |



EQUIPMENT DEVELOPMENT COMPANY, INC.

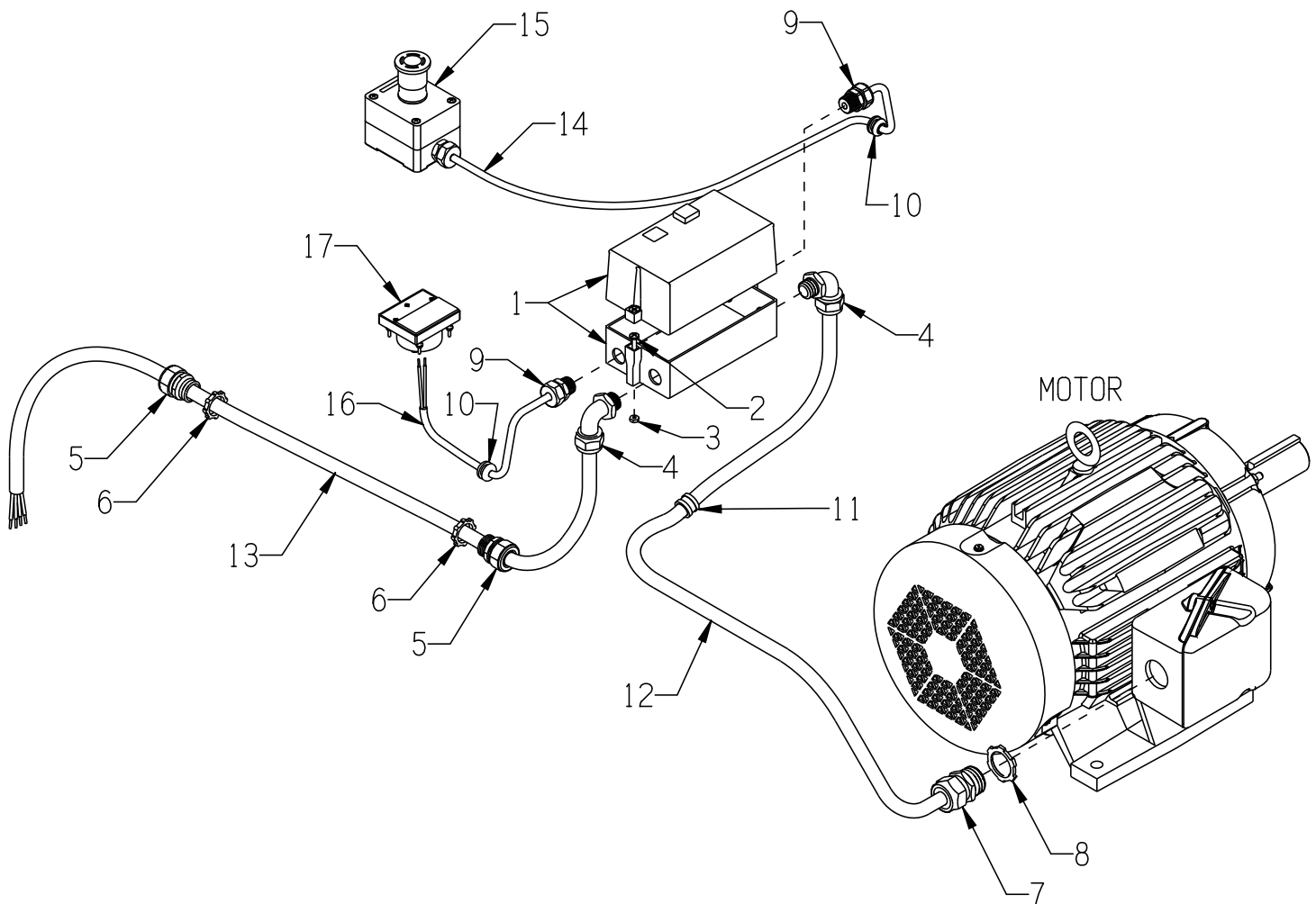
100 Thomas Johnson Drive, Frederick, MD 21702-4600 USA
 Phone: 800-638-3326 or 301-663-1600 • Fax: 800-447-3326 or 301-663-1607
 Website: www.edcoinc.com • E-mail: sales@edcoinc.com

Printed in USA

JWA ©2015

Page 31

**ILLUSTRATION 18:
STARTER & E-STOP SWITCH GROUPING**



| PARTS LISTING - ILLUSTRATION 18: STARTER & E-STOP SWITCH GROUPING | | | |
|--|--------|---|------|
| ITEM # | PART # | DESCRIPTION | QTY. |
| 1 | 16416 | STARTER ACI #128863 START-STOP (COMPLETE) | 1 |
| | | REPLACEMENT PARTS: | |
| | 16652 | STARTER BOX ONLY HNFS18-20 | 1 |
| | 16618 | STARTER CONT./COIL ACI SK18.310-460 | 1 |
| | 16623 | STARTER AC COIL 440/480V-60HZ, 380/415-50HZ | 1 |
| | 16637 | STARTER OVERLOAD RELAY 17.5-21.5A | 1 |
| 2 | 11732 | SCREW, MACHINE 10-32 X 1-3/4 RHP | 2 |
| | 10384 | SCREW, MACHINE 10-32 X 1 RHP | 1 |
| 3 | 10832 | NUT, KEPS LOCK 10-32 ZINC | 3 |
| 4 | 11621 | STRAIN RELIEF 90D X 1/2NPT .625-.75 | 2 |
| 5 | 10605 | STRAIN RELIEF 3/4NPT X .650-.750" | 2 |
| 6 | 10740 | CONDUIT LOCK NUT 3/4 NP | 2 |
| 7 | 16172 | STRAIN RELIEF 1"NPT X .625-.750" | 1 |
| 8 | 10770 | CONDUIT LOCK NUT 1" NP (LOCATED INSIDE JUNCTION BOX) | 1 |
| 9 | 16190 | STRAIN RELIEF 1/2NPT X .250-.350" | 2 |
| 10 | 57148 | GROMMET 3/8ID X 1/8GRV. X 5/8GD | 2 |
| 11 | 11565 | CLAMP, LOOM, 5/8" (SAE SIZE 10) | 2 |
| 12 | 50680 | CORD, MOTOR 10/4 600V X 66"LOA | 1 |
| 13 | 50681 | CORD, POWER 10/4 600V X 54"LOA | 1 |
| 14 | 50682 | CORD, E-STOP 16/2 300V X 45"LOA | 1 |
| 15 | ----- | E-STOP SWITCH (SEE ILLUS. 19 FOR BREAKDOWN) | 1 |
| 16 | 50683 | CORD, AMMETER 16/2 300V X 24"LOA | 1 |
| 17 | 16543 | AMMETER, AC ANALOG 0-50 AMP | 1 |


EQUIPMENT DEVELOPMENT COMPANY, INC.

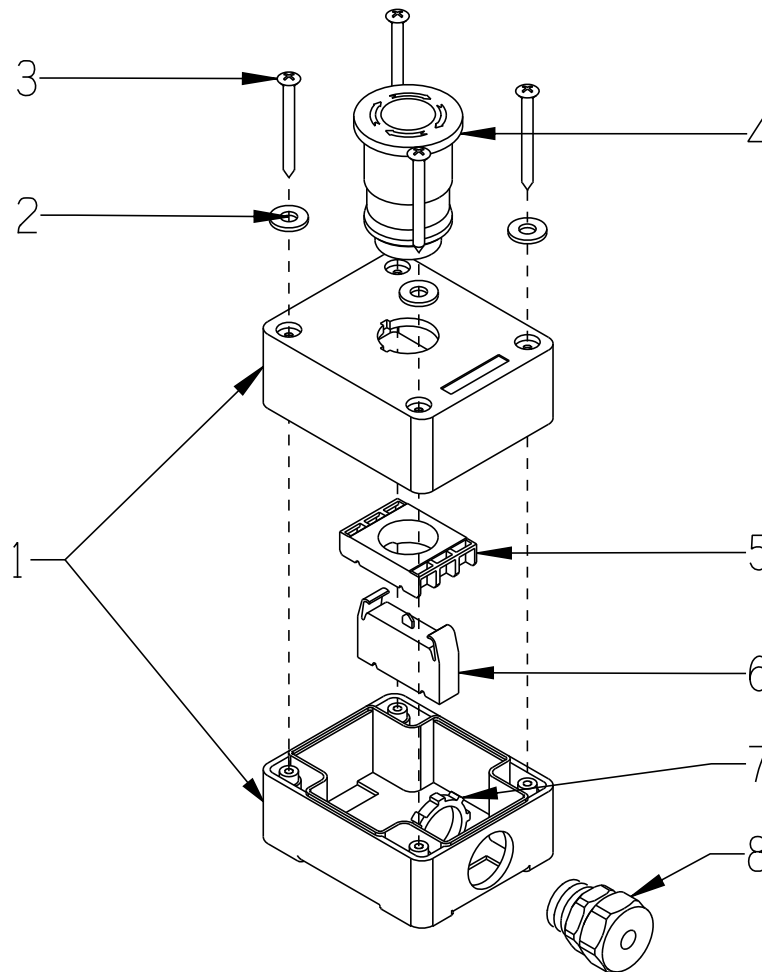
100 Thomas Johnson Drive, Frederick, MD 21702-4600 USA
 Phone: 800-638-3326 or 301-663-1600 • Fax: 800-447-3326 or 301-663-1607
 Website: www.edcoinc.com • E-mail: sales@edcoinc.com

Printed in USA

JWA ©2015

Page 33

ILLUSTRATION 19: EMERGENCY STOP SWITCH



| ITEM # | PART # | DESCRIPTION | QTY. |
|--------|-----------|---------------------------------------|------|
| 1 | 16668 | ENCLOSURE, 1 HOLE ACI PBE1 | 1 |
| 2 | 10892 | WASHER, FLAT #10 SS .218 X .437 | 4 |
| 3 | - - - - - | SCREW (INCLUDED W/ ENCLOSURE, ITEM 1) | 4 |
| 4 | 15275 | PUSHBUTTON, TURN TO RELEASE E-STOP | 1 |
| 5 | 15276 | MOUNTING ADAPTER, PUSHBUTTON | 1 |
| 6 | 15278 | CONTACT ELEMENT, NC RED LM2TC01 | 1 |
| 7 | 10790 | CONDUIT LOCK NUT 1/2 NP | 1 |
| 8 | 16190 | STRAIN RELIEF 1/2NPT X .250-.350" | 1 |

THIS PAGE WAS LEFT BLANK INTENTIONALLY



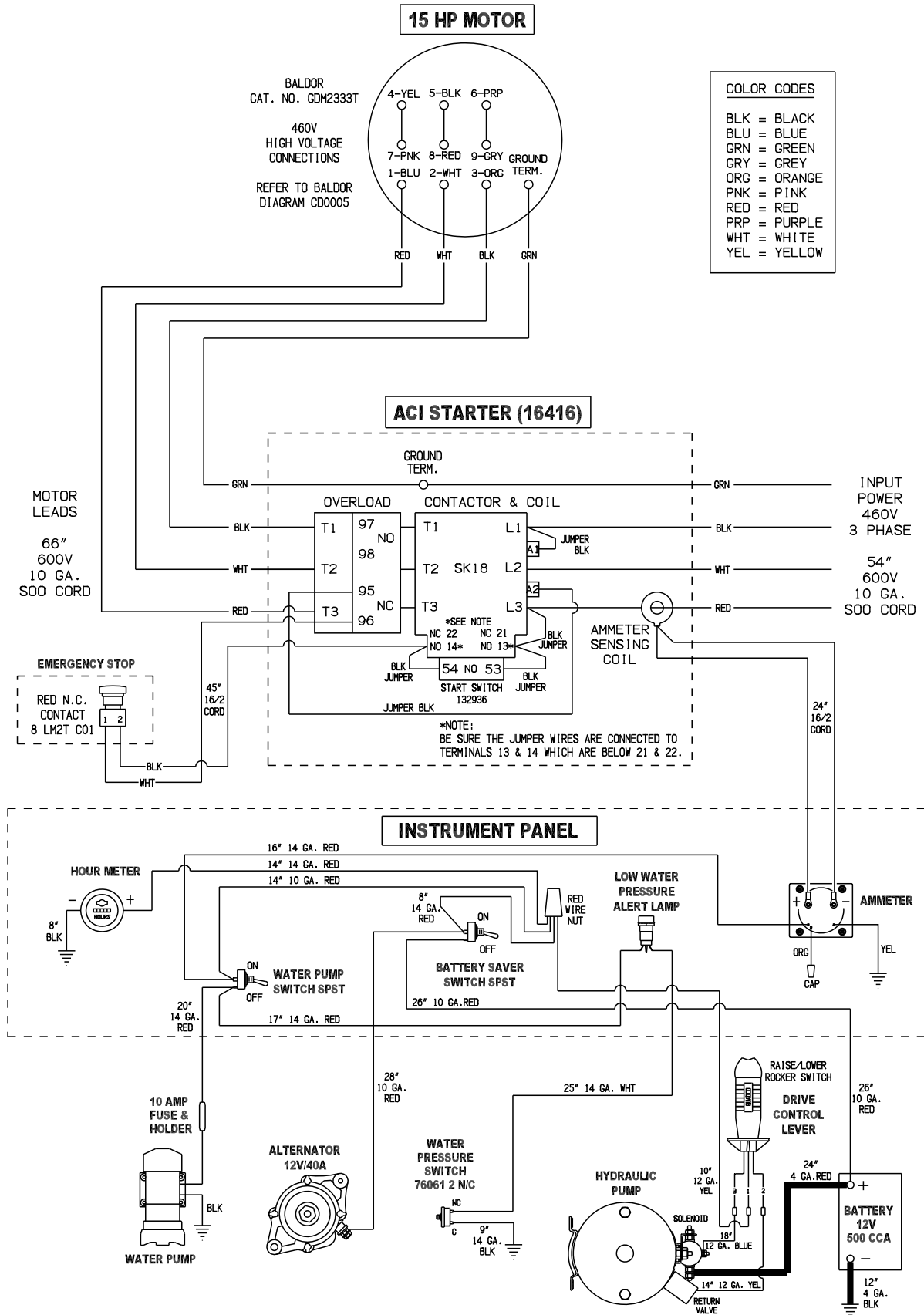
EQUIPMENT DEVELOPMENT COMPANY, INC.
100 Thomas Johnson Drive, Frederick, MD 21702-4600 USA
Phone: 800-638-3326 or 301-663-1600 • Fax: 800-447-3326 or 301-663-1607
Website: www.edcoinc.com • E-mail: sales@edcoinc.com

Printed in USA

JWA ©2015

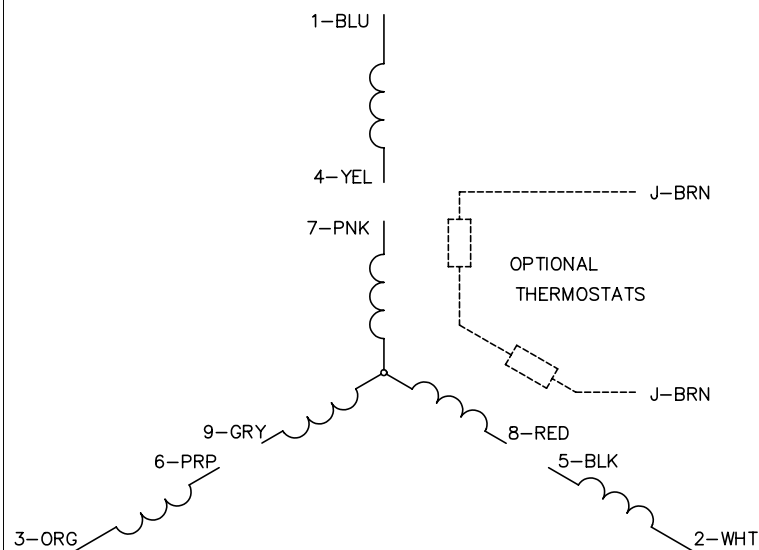
Page 35

WIRING DIAGRAM FOR 60Hz MODEL

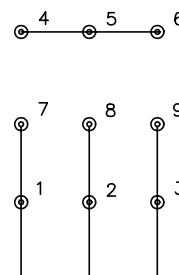


WIRING DIAGRAM FOR 60Hz MOTOR

CD0005

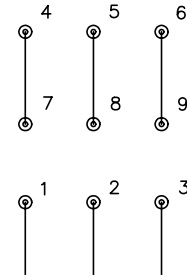


LOW VOLTAGE
(2Y)



LINE

HIGH VOLTAGE
(1Y)



LINE

NOTES:

1. INTERCHANGE ANY TWO LINE LEADS TO REVERSE ROTATION.
2. OPTIONAL THERMOSTATS ARE PROVIDED WHEN SPECIFIED.
3. ACTUAL NUMBER OF INTERNAL PARALLEL CIRCUITS MAY BE A MULTIPLE OF THOSE SHOWN ABOVE.
4. LEAD COLORS ARE OPTIONAL. LEADS MUST ALWAYS BE NUMBERED AS SHOWN.

REV. DESC: REVISE TO SHOW OPTIONAL COLORS

REV. LTR: E BY: JLP REVISED: 01/19/99 10:15 TDR: 0171435

900000

FILE: AAA00005140

MDL: -

MTL: -

BALDOR ELECTRIC Co.

3PH, DV, 9 LEADS

CD0005



EQUIPMENT DEVELOPMENT COMPANY, INC.

100 Thomas Johnson Drive, Frederick, MD 21702-4600 USA

Phone: 800-638-3326 or 301-663-1600 • Fax: 800-447-3326 or 301-663-1607

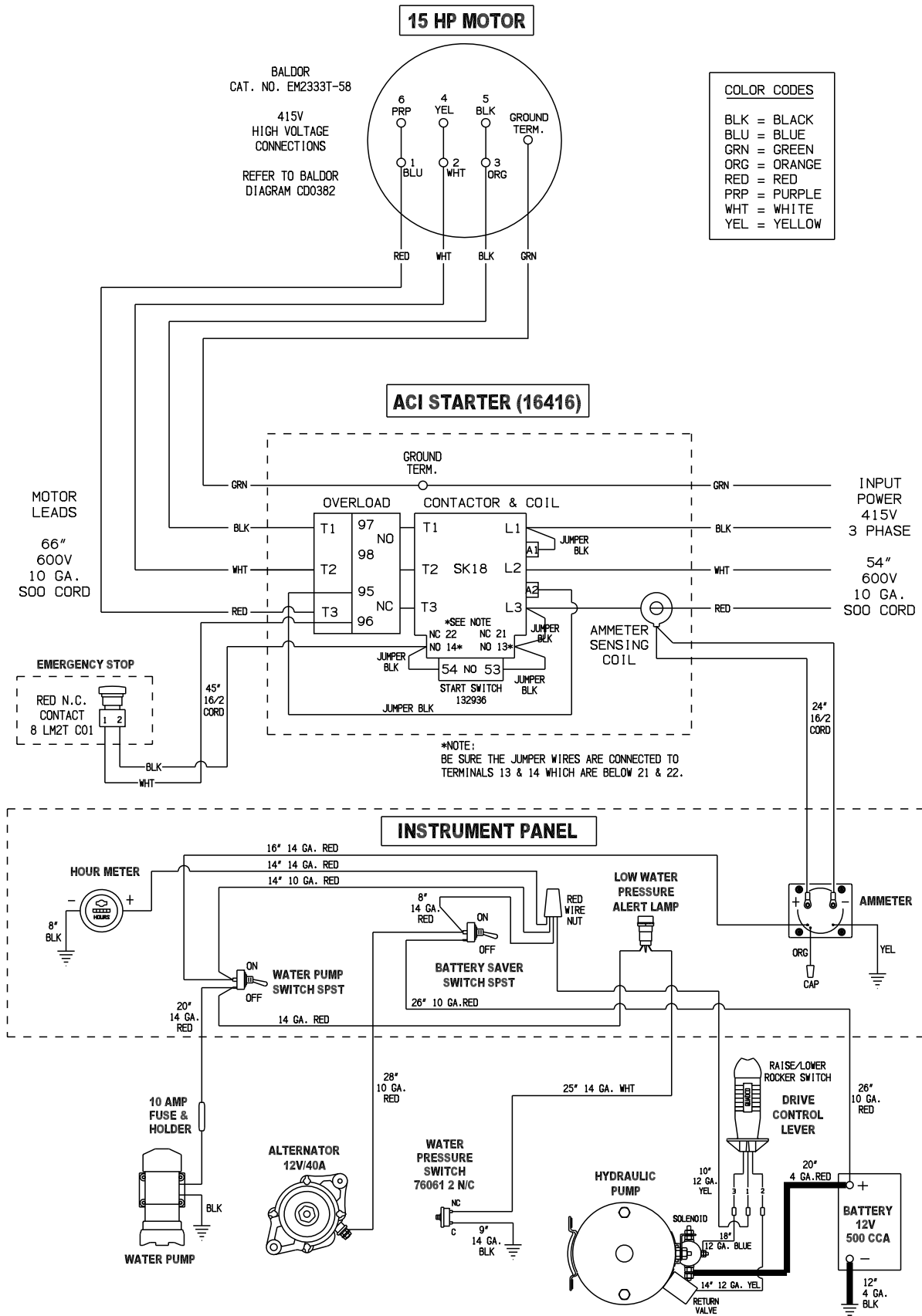
Website: www.edcoinc.com • E-mail: sales@edcoinc.com

Printed in USA

JWA ©2015

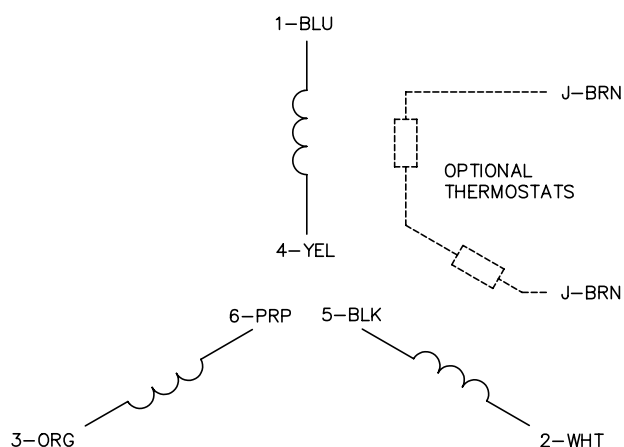
Page 37

WIRING DIAGRAM FOR 50Hz MODEL

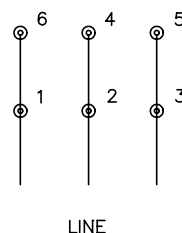


WIRING DIAGRAM FOR 50Hz MOTOR

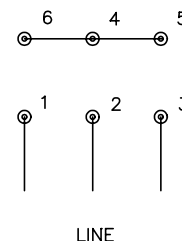
CD0382



RUN CONNECTION
(1D)



START CONNECTION
(1Y)



NOTES:

1. INTERCHANGE ANY TWO LINE LEADS TO REVERSE ROTATION.
2. OPTIONAL THERMOSTATS ARE PROVIDED WHEN SPECIFIED.
3. ACTUAL NUMBER OF INTERNAL PARALLEL CIRCUITS MAY BE A MULTIPLE OF THOSE SHOWN ABOVE.
4. LEAD COLORS ARE OPTIONAL. LEADS MUST ALWAYS BE NUMBERED AS SHOWN.
5. FOR ACROSS-THE-LINE STARTING, USE 'RUN' CONNECTION.

REV. DESC: ADD NOTE 5 FOR DOL STARTING

REV. LTR: E

BY: JLP

REVISED: 11/30/00 2:26

TDR: 0226155

CD0382

FILE: AAA00005243

REF: --

MTL: --

BALDOR ELECTRIC Co.

3PH, SV, 6 LEADS, Y START/D RUN

CD0382



EQUIPMENT DEVELOPMENT COMPANY, INC.

100 Thomas Johnson Drive, Frederick, MD 21702-4600 USA

Phone: 800-638-3326 or 301-663-1600 • Fax: 800-447-3326 or 301-663-1607

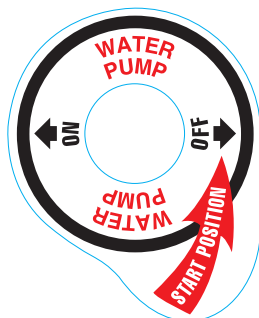
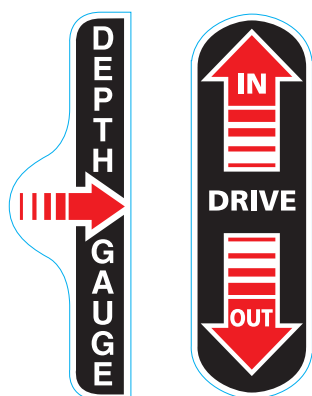
Website: www.edcoinc.com • E-mail: sales@edcoinc.com

Printed in USA

JWA ©2015

Page 39

DECAL SHEET P/N 92032-4



DECAL KIT
Model SS-26E
PN: 92032-4_RevA

**LOW WATER
PRESSURE ALERT**

**BATTERY SAVER
TURN OFF WHEN
MACHINE NOT IN USE**

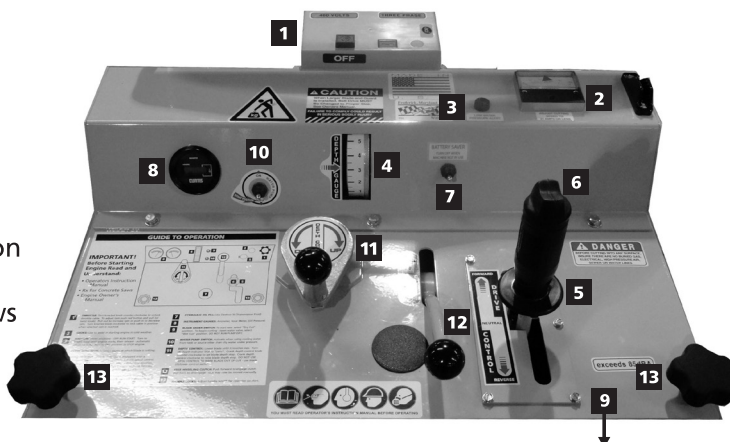
**ADJUST CUTTING
SPEED TO
21 AMPS OR LESS**



GUIDE TO OPERATION

IMPORTANT! Before Starting Read and Understand:

- Operators Instruction Manual
- Rx for Concrete Saws
- Engine Owner's Manual

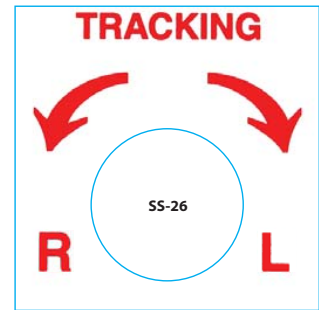
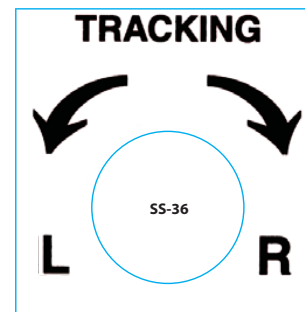


- | | |
|--|--|
| <p>1 ON/OFF STARTER BOX: Depress green button to energize motor. Depress red button to stop.</p> <p>2 AMMETER: Adjust forward cutting speed to 21 AMPS or less. Continued use above 21 AMPS will cause thermal overload to shut off machine.</p> <p>3 LOWER WATER PRESSURE ALERT: Will shut off machine to protect blade.</p> <p>4 DEPTH INDICATOR: Displays depth at which blade is cutting. Step cut for cuts deeper than 3".</p> <p>5 SPEED CONTROL LEVER: This saw is equipped with a hydrostatic transmission, which permits infinite speed control and acts as a dynamic brake when lever is in neutral position. Slowly moving lever forward causes the saw to move forward. Pulling the lever back causes the saw to move backward.</p> <p>6 BLADE LIFT/LOWER CONTROL: A toggle switch located on top of (5) Speed Control Lever hydraulically controls the raising and lowering of the blade.</p> | <p>7 BATTERY SAVER: Turn on to operate machine. Turn off to protect battery.</p> <p>8 HOUR METER: Records amount of time machine is turned on.</p> <p>9 TRACKING: Saw is preset at the factory. If saw pulls left or right while cutting contact your rental agent for adjustment. See operators manual for instructions.</p> <p>10 WATER PUMP SWITCH: Activate when using cooling water from tank or source other than city water under pressure.</p> <p>11 DEPTH CONTROL: Lower blade until it touches slab. Turn (4) Depth Indicator Dial to "zero". Crank depth control knob counter-clockwise to set blade depth stop. Crank depth control clockwise to raise blade depth stop. DO NOT USE DEPTH CONTROL TO RAISE BLADE OUT OF CUT - use blade lift/lower control switch.</p> <p>12 FREE WHEELING CLUTCH: Push forward to engage clutch pull back to disengage - saw may now be moved manually.</p> <p>13 HANDLE LOCKS: Adjust handle length for operator comfort.</p> |
|--|--|

SS-26

DECAL SHEET P/N 92032-2

DECAL KIT Model SS-26 Model SS-36 PN: 92032-2 RevB

**CHECK OIL DAILY****EQUIPMENT DEVELOPMENT COMPANY, INC.**

100 Thomas Johnson Drive, Frederick, MD 21702-4600 USA

Phone: 800-638-3326 or 301-663-1600 • Fax: 800-447-3326 or 301-663-1607

Website: www.edcoinc.com • E-mail: sales@edcoinc.com

Printed in USA

JWA ©2015

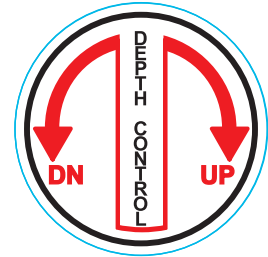
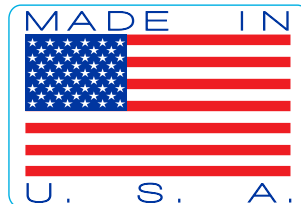
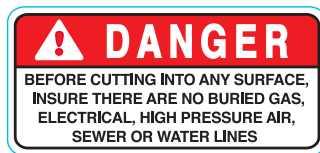
Page 41

DECAL SHEET P/N 92032-3

P/N 92032-3 RevC

SS-26

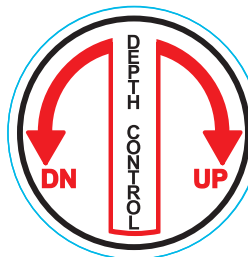
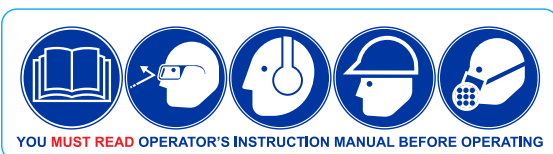
14x17 Sheet



exceeds 85dBA



CALIFORNIA PROPOSITION 65 WARNING
The engine exhaust from this product contains
chemicals known to the State of California to cause
cancer, birth defects or other reproductive harm.



DIESEL FUEL

NOTES

Record here any repairs or changes made to the Equipment



EQUIPMENT DEVELOPMENT COMPANY, INC.

100 Thomas Johnson Drive, Frederick, MD 21702-4600 USA

Phone: 800-638-3326 or 301-663-1600 • Fax: 800-447-3326 or 301-663-1607

Website: www.edcoinc.com • E-mail: sales@edcoinc.com

Printed in USA

JWA ©2015

LIMITED EQUIPMENT WARRANTY OF SALE - TERMS & CONDITIONS

Equipment Development Company, Inc. herein referred to as EDCO (Seller) warrants that each new unit manufactured by EDCO to be free from defects in material and workmanship in normal use and service for a period of (1) one year (except for the cutter drum assembly on all model concrete/asphalt planes, in which case the warranty period shall be 90 days) from date of shipment to the original retail or equipment rental center owner.

Accessories or equipment furnished and installed on the product by EDCO but manufactured by others, including, but not limited to engines, motors, electrical components, transmissions etc., shall carry the accessory manufacturers own warranty.

EDCO will, at its option, repair or replace, at the EDCO factory or at a point designated by EDCO, any part which shall appear to the satisfaction of EDCO inspection to have been defective in material or workmanship.

EDCO reserves the right to modify, alter and improve any part or parts without incurring any obligation to replace any part or parts previously sold without such modified, altered or improved part or parts.

This warranty is in lieu of and excludes all other warranties, expressed, implied, statutory, or otherwise created under applicable law including, but not limited to the warranty of merchantability and the warranty of fitness for a particular purpose in no event shall seller or the manufacturer of the product be liable for special, incidental, or consequential damages, including loss of profits, whether or not caused by or resulting from the negligence of seller and/or the manufacturer of the product unless specifically provided herein. In addition, this warranty shall not apply to any products or portions thereof which have been subjected to abuse, misuse, improper installation, maintenance, or operation, electrical failure or abnormal conditions and to products which have been tampered with, altered, modified, repaired, reworked by anyone not approved by seller or used in any manner inconsistent with the provisions of the above or any instructions or specifications provided with or for the product.

FORCE MAJEURE

Seller's obligation hereunder are subject to, and Seller shall not be held responsible for, any delay or failure to make delivery of all or any part of the Product due to labor difficulties, fires, casualties, accidents, acts of the elements, acts of God, transportation difficulties, delays by a common carrier, inability to obtain Product, materials or components or qualified labor sufficient to timely perform part of or all of the obligations contained in these terms and conditions, governmental regulations or actions, strikes, damage to or destruction in whole or part of manufacturing plant, riots, terrorist attacks or incidents, civil commotions, warlike conditions, flood, tidal waves, typhoon, hurricane, earthquake, lightning, explosion or any other causes, contingencies or circumstances within or without the United States not subject to the Seller's control which prevent or hinder the manufacture or delivery of the Products or make the fulfillment of these terms and conditions impracticable. In the event of the occurrence of any of the foregoing, at the option of Seller, Seller shall be excused from the performance under these Terms and Conditions, or the performance of the Seller shall be correspondingly extended.

This document sets forth the terms and conditions pursuant to which the purchaser ("Purchaser") will purchase and Equipment Development Co. Inc. ("Seller") will sell the products, accessories, attachments (collectively the Products) ordered by the Purchaser. These terms and conditions shall govern and apply to the sale of Seller's Products to Purchaser, regardless of any terms and conditions appearing on any purchase order or other forms submitted by Purchaser to Seller, or the inconsistency of any terms therein and herein.

1. PRICE

All prices set forth on any purchase order or other document are F.O.B. Sellers facility or distribution point, as may be determined by Seller (F.O.B. Point). All prices are exclusive of any and all taxes, including, but not limited to, excise, sales, use, property or transportation taxes related to the sale or use of the Products, now or hereafter imposed, together with all penalties and expenses. Purchaser shall be responsible for collecting and/or paying any and all such taxes, whether or not they are stated in any invoice for the Products. Unless otherwise specified herein, all prices are exclusive of inland transportation, freight, insurance and other costs and expenses relating to the shipment of the Products from the F.O.B. point to Purchaser's facility. Any prepayment by Seller of freight insurance and other costs shall be for the account of Purchaser and shall be repaid to Seller.

2. PAYMENT TERMS

Payment terms are as follows. 2% 10 days (to approved and qualified accounts). Net 30 days. This is a cash discount for invoices paid within 10 days after the invoice date, regardless of date of receipt of shipment. This is not a trade discount and will not be granted to accounts that do not adhere to stated terms.

*All past due accounts are subject to a late payment fee of 1.5% per month or a maximum allowed by law if different, along with the expenses incidental to collection including reasonable attorney's fees and costs.

*Seller reserves the right to hold shipments against past due accounts.

*Seller reserves the right to alter payment terms.

3. FREIGHT TERMS

All shipments will be made F.O.B. shipping point as designated in these Terms and Conditions, and title shall pass at the F.O.B. point. Delivery to the initial common carrier shall constitute delivery to the Purchaser. Any claims for loss or damage during shipment are to be filed with carrier by the Purchaser. Seller will not assume responsibility for the performance of the carrier.

Back orders will be shipped in the most practical fashion with charges consistent with our freight policy established with the original order. UPS, FED EX, MAIL or shipments by other couriers are subject to the same terms and conditions as outlined in paragraph #3 "Freight Terms".

4. DELIVERY, DAMAGES, SHORTAGES

Seller shall use reasonable efforts to attempt to cause the Products to be delivered as provided for in these Terms & Conditions. Delivery to the initial common carrier shall constitute the delivery to the Purchaser. Seller's responsibility, in so far as transportation risks are concerned ceases upon the delivery of the Products in good condition to such carrier at the F.O.B. point and all the Products shall be shipped at the Purchaser's risk. Seller shall not be responsible or liable for any loss of income and/or profits, or incidental, special, consequential damages resulting from Seller's delayed performance in shipment and delivery.

5. RETURN OF DEFECTIVE PRODUCTS

Defective or failed material shall be held at the Purchaser's premises until authorization has been granted by Seller to return or dispose of Products. Products that are to be returned for final inspection must be returned Freight Prepaid in the most economical way. Credit will be issued for material found to be defective upon Seller's inspection based on prices at time of purchase.

6. PRODUCTS ORDERED IN ERROR

Products may be returned, provided that claim is made and Seller is notified within 7 days of receipt of Products, and the Products are in original buyer's possession not more than 30 days prior to return, subject to Seller's approval. If Products are accepted for return, they must be Freight Prepaid and buyer will be charged a minimum of 15% restocking charge, plus a charge back for outbound freight charges if the original order was shipped prepaid. Returns are not accepted for any Products that are specifically manufactured to meet the buyer's requirement of either specifications or quantity.

AGREEMENTS

These Terms and Conditions constitute the entire agreement between Seller and Purchaser as it relates to terms and conditions of sale, and supersedes any and all prior oral or written agreements, correspondence, quotations or understandings heretofore in force between the parties relating to the subject matter hereof. There are no agreements between Seller and Purchaser with respect to the Product herein except those specifically set forth in and made part of these terms and conditions. Any additional terms, conditions and/or prices are rejected by Seller.

These terms and conditions may be modified, cancelled or rescinded only by a written agreement of both parties executed by their duly authorized agents.

USE ONLY GENUINE EDCO PARTS & ACCESSORIES
For your own safety, the safety of others and the life of your machine.
Equipment Development Company, Inc.