

DIESEL POWERED CONCRETE SAW PARTS LIST MANUAL



Model SS65-57D PART NO. 33500



100 Thomas Johnson Drive, Frederick, MD 21702-4600 USA
Phone (301) 663-1600 • 1-800-638-3326
Fax (301) 663-1607 • 1-800-447-3326
Website: www.edcoinc.com • Email: sales@edcoinc.com

Printed in USA
©2004

READ AND UNDERSTAND THE OPERATORS INSTRUCTION MANUAL THOROUGHLY BEFORE ATTEMPTING TO OPERATE THIS EQUIPMENT. Death or serious injury could occur if this machine is used improperly.



SAFETY MESSAGES



The safety instructions are preceded by a graphic alert message of DANGER, WARNING, or CAUTION.



Indicates an imminent hazard which, if not avoided, will result in death or serious injury.



Indicates an imminent hazard which, if not avoided, can result in death or serious injury.



Indicates hazards which, if not avoided, could result in serious injury and or damage to the equipment.

GASOLINE Powered Equipment



- Do not operate gasoline powered equipment without adequate ventilation. Carbon monoxide is an invisible, odorless gas that can kill.

ELECTRICAL Powered Equipment



- ELECTRICAL HAZARD** - Be sure equipment is properly grounded. Failure to comply could kill or result in serious injury.



The engine exhaust from this product contains chemicals known to the State of California to cause cancer, birth defects or other reproductive harm.

GENERAL INSTRUCTIONS



- You must read and understand the operators instruction manual and all other manuals associated with this machine. For your safety and the safety of others around you, it is extremely important to fully understand how to operate this machine in the way it was intended. Different model machines or older/newer versions of the same model may have different parts and controls that you need to understand. If instructions are not readable or available DO NOT USE this machine and contact the factory for a replacement Manual.
- You must be able to physically handle the bulk weight and power of this machine. If not properly controlled this machine can cause death or serious injury.
- Do not operate this machine in an impaired mental state. You must be able to exercise good judgement and reactions to maintain a safe working environment.
- This is a "one person" machine which means only one operator can be operating the machine at any one time. For the safety of others, maintain a safe operating distance to other personnel. Your work area should be defined and appropriately marked so bystanders and coworkers do not stand or walk near this machine and end up seriously injured by flying debris or exposing them to harmful noise or dust.
- This equipment is for Commercial use. Although this is a "one person" machine your work team should understand how to shut this machine off and quickly get medical help if an accident strikes the operator.
- Keep all guards in place during operation. The guards are to provide protection from inadvertent contact with dangerous moving parts, pinch points, or hot surfaces.
- Wear appropriate Personal Protective Equipment (PPE) including safety glasses, safety boots, work gloves, respiratory protection, hearing protection, and head protection. Do not wear loose clothing that can get tangled in moving parts. Failure to do so could result in dismemberment or death. **Wear an approved respirator when removing hazardous materials or when grinding/cutting dry materials. Some dust particles such as concrete dust can contain silicate particles which can cause silicosis (a very serious lung disease). Contact NIOSH or OSHA for further details. When wet grinding/cutting, avoid contact with the concrete/asphalt slurry which can cause serious skin irritations.**
- You must maintain this machine per the maintenance schedule in the operator manual. Remember before adjusting, servicing, or fueling this machine, disconnect the source of power to the machine by disconnecting the spark plug (Gas models), or by unplugging the electrical power cord (electric models) or air hose (Pneumatic models) AT THE MACHINE so you can assure yourself it remains unplugged while you are working on it. Do not modify this machine. Use only genuine EDCO parts and accessories. Repairs and service should be performed by approved EDCO dealers or authorized technicians.
- You should look carefully around the area before you begin work so you can identify potential hazards such as deck inserts, pipes, columns, openings, electrical cords or outlets, or any other objects protruding from the slab surface.
- This machine has no brain so you must use your own. There is no substitute for safety. The safety decals on the machine are to serve as a reminder for information you must already know before you begin using this machine. Take a moment to reread the safety decals each time you use the machine. If your machine is missing any decals, contact the factory for a replacement (EDCO 1-800-638-3326).

PARTS LIST MANUAL

MODEL SS65-57D

Section	Page Number
Safety Messages / General Instructions	2
How To Order Replacement Parts	3
Illustration 1 : Frame Assembly	4,5
Illustration 2 : Lifting Assembly	6,7
Illustration 3 : Water Pump Assembly	8,9
Illustration 4 : Guide Bar Assembly	10
Illustration 5 : Blade Depth Gauge Assembly	11
Illustration 6 : Arbor Assembly	12
Illustration 7 : Throttle Grouping	13
Illustration 8 : Transmission Assembly	14,15
Illustration 9 : Clutch & Rear Axle Assembly	16,17
Illustration 10 : Engine Grouping	18,19
Illustration 11 : Engine Mount Grouping	20,21
Illustration 12 : Belt Drive Grouping	22,23
Illustration 13 : Instrument Panel Grouping	24,25
Illustration 14 : Exhaust Grouping	26
Illustration 15 : Wiring Diagram	27
Limited Equipment Warranty	back cover

HOW TO ORDER REPLACEMENT PARTS

- To insure product safety and reliability, always use genuine EDCO replacement parts when making repairs to the equipment.
- When calling for parts, specify the MODEL and SERIAL NUMBER of the machine which can be found on the NAME PLATE. Keep that information in the space provided. In addition to this information, give part number, description and quantity as listed on the parts list to your parts representative.
- Please note: Due to improvements and changes in the equipment, the illustrations shown may be different than the actual machine.

FILL IN INFORMATION BELOW

Date of Purchase _____

Name of Machine _____

Model # _____

Serial # _____

Belt Size(s) _____

Toll Free: 1-800-638-3326

FAX: 1-800-447-3326

email: sales@edcoinc.com

www.edcoinc.com



100 Thomas Johnson Drive, Frederick, MD 21702-4600 USA

Phone (301) 663-1600 • 1-800-638-3326

Fax (301) 663-1607 • 1-800-447-3326

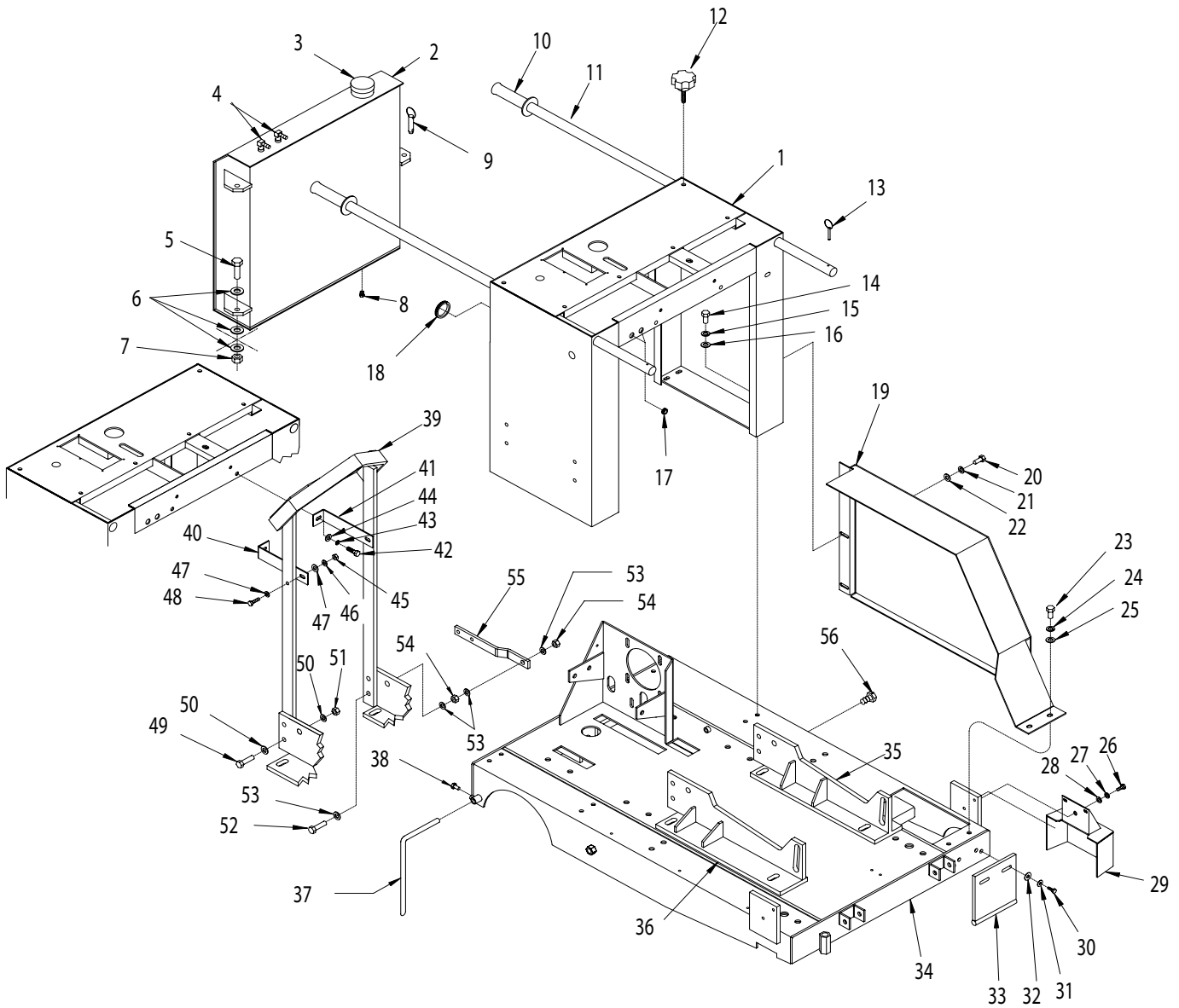
Website: www.edcoinc.com • Email: sales@edcoinc.com

Printed in USA

©2004

Page 3

ILLUSTRATION 1 : FRAME ASSEMBLY

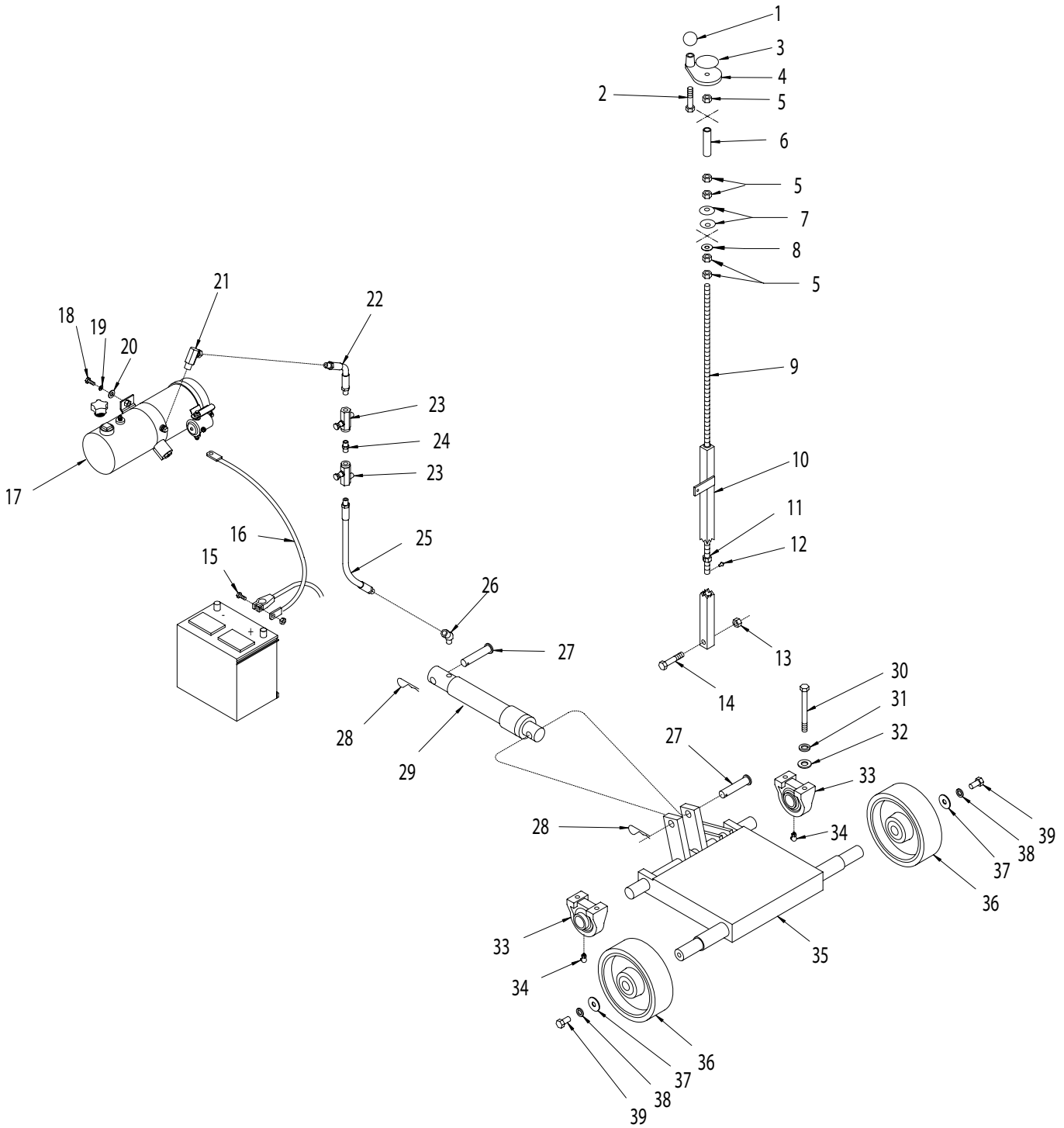


PARTS LISTING - ILLUSTRATION 1 : FRAME ASSEMBLY

ITEM#	PART#	DESCRIPTION	QTY.	ITEM#	PART #	DESCRIPTION	QTY.
1	57439	CONSOLE	1	30	10055	SCREW, CAP 3/8-16x1	2
2	57004	TANK, FUEL 9.75 GAL.	1	31	10811	WASHER, LOCK 3/8	2
3	61056	CAP, FUEL TANK	1	32	10025	WASHER, FLAT 3/8	2
4	57005	TUBE, FUEL PICK-UP/RETURN 21-3/4"	2	33	57445	GUARD, LOWER PULLEY	1
5	10308	SCREW, CAP 1/2-20x1-1/2	2	34	57460	MAIN FRAME	1
6	10312	WASHER, FLAT 1/2	6	35	57419	MOUNT BRKT., ENGINE LEFT (SEE ILLUSTRATION #11)	1
7	10205	NUT, LOCK 1/2-20	2	36	57420	MOUNT BRKT., ENGINE RIGHT (SEE ILLUSTRATION #11)	1
8	11650	PIPE PLUG 1/8 NPT (BRASS)	1	37	51011	GUIDE POINTER, REAR	1
9	10125	PIN, DETENT RING 1/2x1-1/2 E.L.	1	38	10834	SCREW, CAP 1/4-20x1/2	2
10	61108	GRIP, HAND 1" MODEL SX	2	39	57424	BAIL, LIFTING	1
11	57490	HANDLE BAR 46"	2	40	57479	RIGHT BRACE, LIFTING BAIL	1
12	51230	KNOB, STAR CLAMPING 3/8-16x1" STUD	2	41	57480	LEFT BRACE, LIFTING BAIL	1
13	10145	PIN, DETENT RING 3/16x1-5/16 E.L.	2	42	10907	SCREW, CAP 3/8-16x3/4	2
14	10055	SCREW, CAP 3/8-16x1	8	43	10025	WASHER, FLAT 3/8	4
15	10811	WASHER, LOCK 3/8	8	44	10811	WASHER, LOCK 3/8	2
16	10025	WASHER, FLAT 3/8	8	45	10404	NUT 3/8-16	2
17	57148	GROMMET 3/8IDx1/8GRV.x5/8 GD	2	46	10811	WASHER, LOCK 3/8	2
18	51253	GROMMET 1-45/64IDx1/8GRV.x2GD	1	47	10025	WASHER, FLAT 3/8	4
19	57425	COVER, BELT, LEFT SIDE	1	48	10333	SCREW, CAP 3/8-16x1-1/4	2
20	10053	SCREW, CAP 5/16-18x3/4	3	49	10322	SCREW, CAP 1/2-20x2	3
21	10801	WASHER, LOCK 5/16	3	50	10312	WASHER, FLAT 1/2	6
22	10213	WASHER, FLAT 5/16	3	51	10154	NUT, HEX NYLON LOCK 1/2-20	3
23	10907	SCREW, CAP 3/8-16x3/4	2	52	10343	SCREW, CAP 1/2-20x2-1/2	1
24	10811	WASHER, LOCK 3/8	2	53	10312	WASHER, FLAT 1/2	4
25	10025	WASHER, FLAT 3/8	2	54	10205	NUT, LOCK 1/2-20	2
26	10907	SCREW, CAP 3/8-16x3/4	1	55	57472	IDLER ARM	1
27	10811	WASHER, LOCK 3/8	1	56	57491	SCREW, CAP 5/8-11 X 1/2 (NYLON)	1
28	10025	WASHER, FLAT 3/8	1				
29	57446	COVER, ARBOR	1				



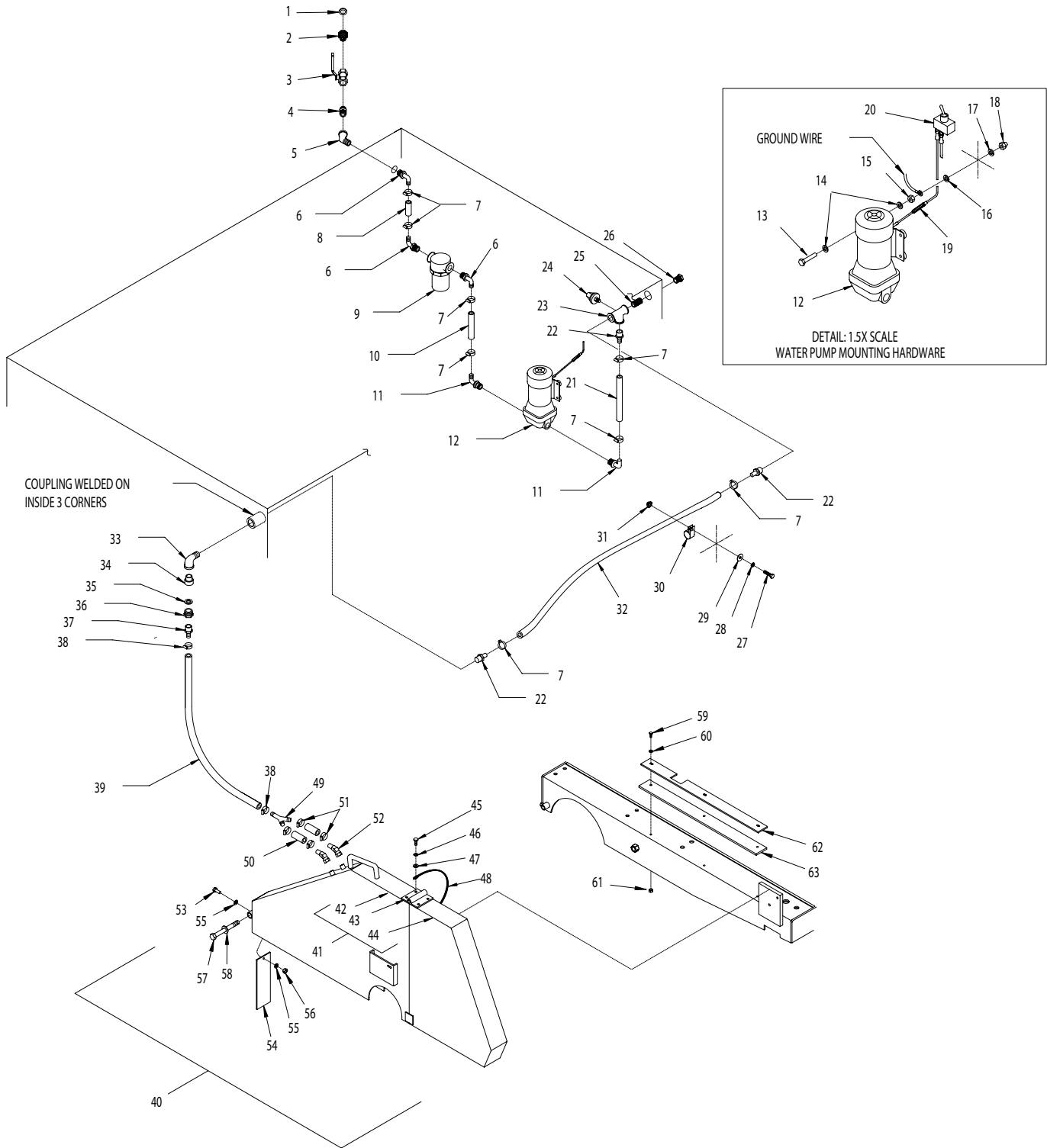
ILLUSTRATION 2 : LIFTING ASSEMBLY



PARTS LISTING - ILLUSTRATION 2 : LIFTING ASSEMBLY			
ITEM #	PART #	DESCRIPTION	QTY.
1	14023	KNOB, BALL 1-3/8 w/ 1/2-13 THD., BLACK	1
2	10323	SCREW, CAP 1/2-13x2-1/2	1
3	80007	DECAL, CUT CONTROL - DN/UP (SMALL)	1
4	57016	HANDWHEEL, SMALL w/ 1/2-13 THD.	1
5	10417	NUT 1/2-13	5
6	57164	SPACER, DEPTH CONTROL LINKAGE 3"	1
7	10426	WASHER, BELLEVILLE 1/2IDx3/64THK	2
8	10312	WASHER, FLAT 1/2	1
9	57163	ROD, ALLTHREAD LINKAGE 1/2-13x26"	1
10	50412	LINKAGE LOWER TUBE	1
11	50455	NUT 1/2-13, SPECIAL	1
12	10127	SCREW, DRIVE 1/8x1/4"L	1
13	10205	NUT, LOCK 1/2-20	1
14	10343	SCREW, CAP 1/2-20x2-1/2	1
15	10342	SCREW, CAP 5/16-18x1-1/2	1
16	50117R	CABLE, EYE-EYE 4GA. X 24" (RED)	1
17	50620	PUMP, HYDRAULIC ELECTRIC, 12VDC M-319	1
18	10055	SCREW, CAP 3/8-16x1	2
19	10811	WASHER, LOCK 3/8	2
20	10025	WASHER, FLAT 3/8	2
21	10794	FITTING, SWIVEL 90D, 3/8x1/4 NPT, HYD.	1
22	57078	HOSE, HYDRAULIC 1/4 NPTx6-1/2" LOA.	1
23	61116	VALVE, FLOW CONTROL	2
24	10717	NIPPLE, HEX 1/4 NPT (BRASS)	1
25	57079	HOSE, HYDRAULIC 1/4 NPTx14-1/2" LOA.	1
26	10710	FITTING, SWIVEL 45D, 1/4 NPT, HYD.	1
27	57023	PIN, CYLINDER 3/4x3-1/2	2
28	61066	PIN, HAIR COTTER 1/2"	2
29	57022	CYLINDER, HYDRAULIC	1
30	10376	SCREW, CAP 1/2-13x5	4
31	10045	WASHER, LOCK 1/2	4
32	10312	WASHER, FLAT 1/2	4
33	50314	BEARING, BALL 1-1/4" TPB	2
34	10961	FITTING, GREASE 1/4-28x90D	2
35	57102	FORK	1
36	57026	WHEEL 8x2-1/2x1" BRG.	2
37	10433	WASHER, BELLEVILLE 1/2IDx3/32THK	2
38	10045	WASHER, LOCK 1/2	2
39	10914	SCREW, CAP 1/2-13x1	2



ILLUSTRATION 3 : WATER PUMP & BLADE GUARD ASSEMBLY



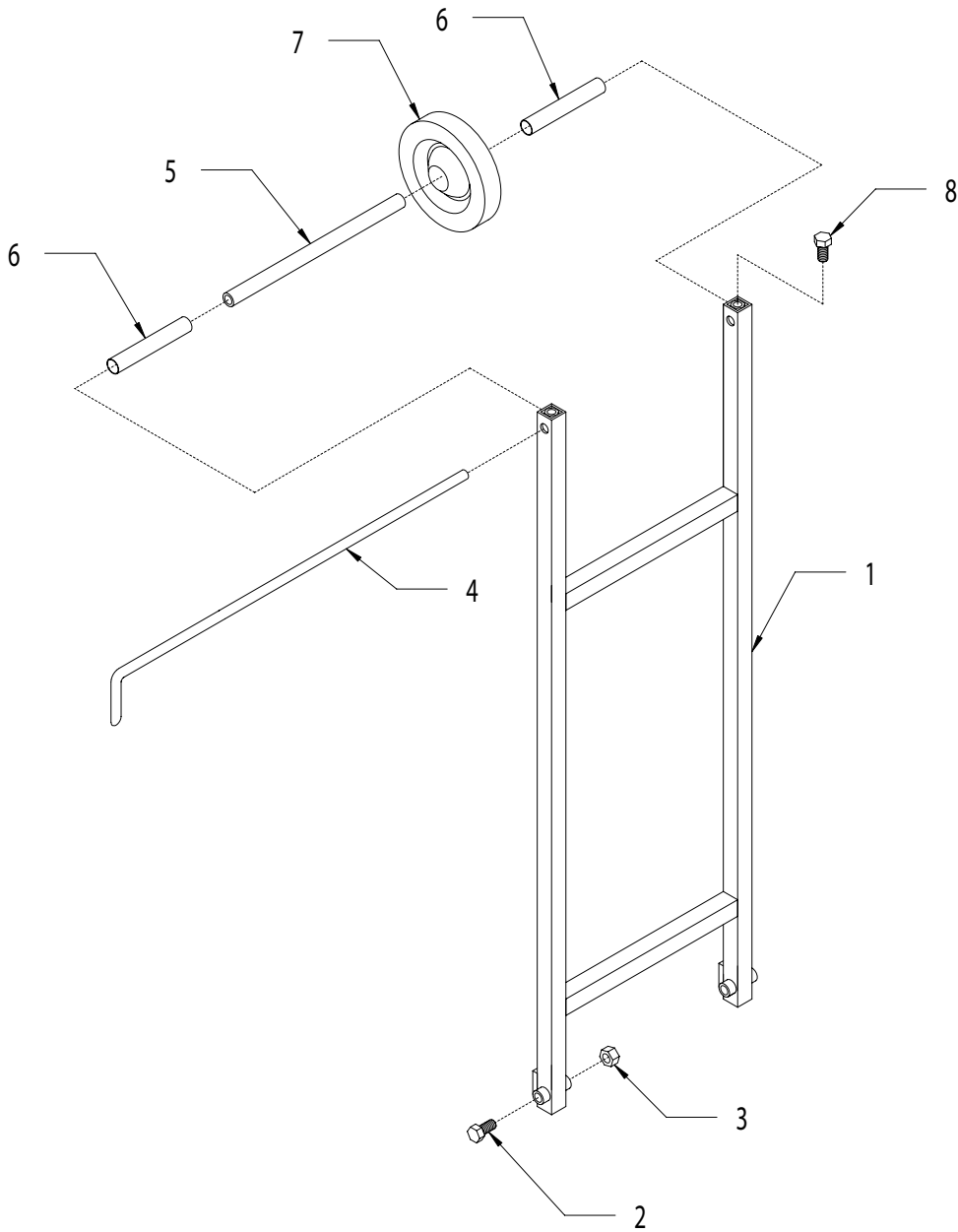
PARTS LISTING - ILLUSTRATION 3 : WATER PUMP & BLADE GUARD ASSEMBLY									
ITEM#	PART#	DESCRIPTION	QTY.	ITEM#	PART#	DESCRIPTION	QTY.		
1	10070	WASHER, HOSE 3/4	1	40		GUARD ASSEMBLY, BLADE (ITEMS 42-56)	1		
2	80021	CONN., SWIVEL FEM. 3/4 HOSEx 1/2 MPT (INCLUDES ITEM #1)	1	57447A		36" BLADE			
3	10711	VALVE, BALL 1/2 FPT	1	57448A		30" BLADE			
4	10679	NIPPLE, HEX 1/2 NPT (BRASS)	1	57449A		24-26" BLADE			
5	10734	ELBOW, STREET 1/2NPT X 45, BLK.	1	57450A		18-20" BLADE			
6	50471	BARB ELBOW 90, 1/2HOSE X 1/2MPT	3	57451A		14-16" BLADE			
7	50069	CLAMP, HOSE, SAE #6, ADJ. TO 13/16	8	41		GUARD ONLY (ITEMS 42-47)	1		
8	50532	HOSE, WATER 1/2" ID x 2"L	1	57447		36" BLADE			
9	57170	STRAINER, NYLON T-STYLE 1/2 FPT	1	57448		30" BLADE			
10	57177	HOSE, WATER 1/2"ID x 3-3/4"L	1	57449		24-26" BLADE			
11	50469	PUMP QUAD PORT BARB ELBOW 1/2" (INCLUDED W/ PUMP)	2	57450		18-20" BLADE			
12	50470	PUMP, WATER, 12VDC, FLOJET QUAD	1	57451		14-16" BLADE			
13	10905	SCREW, CAP 1/4-20x1-1/4	4	42		GUARD, BLADE, REAR ONLY	1		
14	10602	WASHER, FLAT 1/4	8	57447R		36" BLADE			
15	10015	NUT, LOCK 1/4-20	4	57448R		30" BLADE			
16	10451	WASHER, LOCK, INT. TOOTH 1/4" (USED ON GROUND ONLY)	1	57449R		24-26" BLADE			
17	10038	WASHER, LOCK 1/4	4	57450R		18-20" BLADE			
18	10876	NUT, ACORN 1/4-20	4	57451R		14-16" BLADE			
19	50447	FUSE & HOLDER, 10AMP	1	43	11617	HINGE, BUTT 3 X 3 X 7GA. S.S.	1		
20	10633	SWITCH, TOGGLE SPST (SEE ILLUS. 13, ITEM 4)	1	44		GUARD, BLADE, FRONT ONLY	1		
21	57176	HOSE, WATER 1/2"ID x 7-1/4"L	1	57447F		36" BLADE			
22	10680	BARB, 1/2 HOSE x 1/2 MPT (PLASTIC)	3	57448F		30" BLADE			
23	50525	PIPE TEE, WATER PRESSURE SWITCH 1/2 NPT	1	57449F		24-26" BLADE			
24	51030	SWITCH, PRESSURE, MAG. IGN., N.C.	1	57450F		18-20" BLADE			
25	10728	PIPE NIPPLE, CLOSE 1/2 NPT, BLK.	1	57451F		14-16" BLADE			
26	50552	PIPE PLUG 1/2 NPT (BRASS)	1	45	10834	SCREW, CAP 1/4-20x1/2	4		
27	10031	SCREW, CAP 1/4-20x1	1	46	10038	WASHER, LOCK 1/4	4		
28	10038	WASHER, LOCK 1/4	1	47	10602	WASHER, FLAT 1/4 (USE ON PIN & CABLE ASSY. ONLY)	1		
29	10602	WASHER, FLAT 1/4	1	48		PIN & CABLE ASSY., BLADE GUARD	1		
30	11565	CLAMP, LOOM, 5/8 (SAE SIZE 10)	1	57481		36" BLADE			
31	10861	NUT, KEPS 1/4-20	1	57482		30" BLADE			
32	57185	HOSE, WATER 1/2"ID x 23"L	1	57483		24-26" BLADE			
33	10724	ELBOW, STREET 1/2 NPT x 90 (BLACK)	1	57484		18-20" BLADE			
34	80021	CONN., SWIVEL FEM. 3/4 HOSEx 1/2 MPT (INCLUDES ITEM #35)	1	57485		14-16" BLADE			
35	10070	WASHER, HOSE 3/4	1	49	10682	BARBED FITTING, "Y" 1/2" HOSE	1		
36	10780	CONNECTOR, MALE 3/4Hx1/2 FPT	1	50	50532	HOSE, WATER 1/2"IDx2"L	2		
37	80061	BARB, PUSH-ON 1/2 HOSEx1/2 MPT	1	51	50069	CLAMP, HOSE, SAE #6, ADJ. TO 13/16	4		
38	50069	CLAMP, HOSE, SAE #6, ADJ. TO 13/16	2	52	10710	FITTING, SWIVEL 45°, 1/4 NPT, HYD.	2		
39		HOSE 1/2"ID (DIFFERENT LENGTHS)	1	53	10018	SCREW, CAP 1/4-20x3/4	1		
	57182	20"L FOR 36" GUARD		54	41115	FLAP, SPLASH 2-1/2x8	1		
	57183	24"L FOR 30" GUARD		55	10602	WASHER, FLAT 1/4	2		
	57184	32"L FOR 24-26" GUARD		56	10015	NUT, LOCK 1/4-20	1		
	57184	32"L FOR 18-20" GUARD		*57	11628	SCREW, CAP 5/8-11x4	1		
	57184	32"L FOR 14-16" GUARD		*58	10457	WASHER, LOCK, INT. TOOTH 5/8	1		
				59	10031	SCREW, CAP 1/4-20x1	3		
				60	10602	WASHER, FLAT 1/4	3		
				61	10150	NUT, HEX NYLON LOCK 1/4-20	3		
				62	57473	RETAINING STRIP, RUBBER SEAL	1		
				63	57474	RUBBER SEAL, BLADE GUARD	1		
				* USED ON 30"-36" BLADE GUARDS					



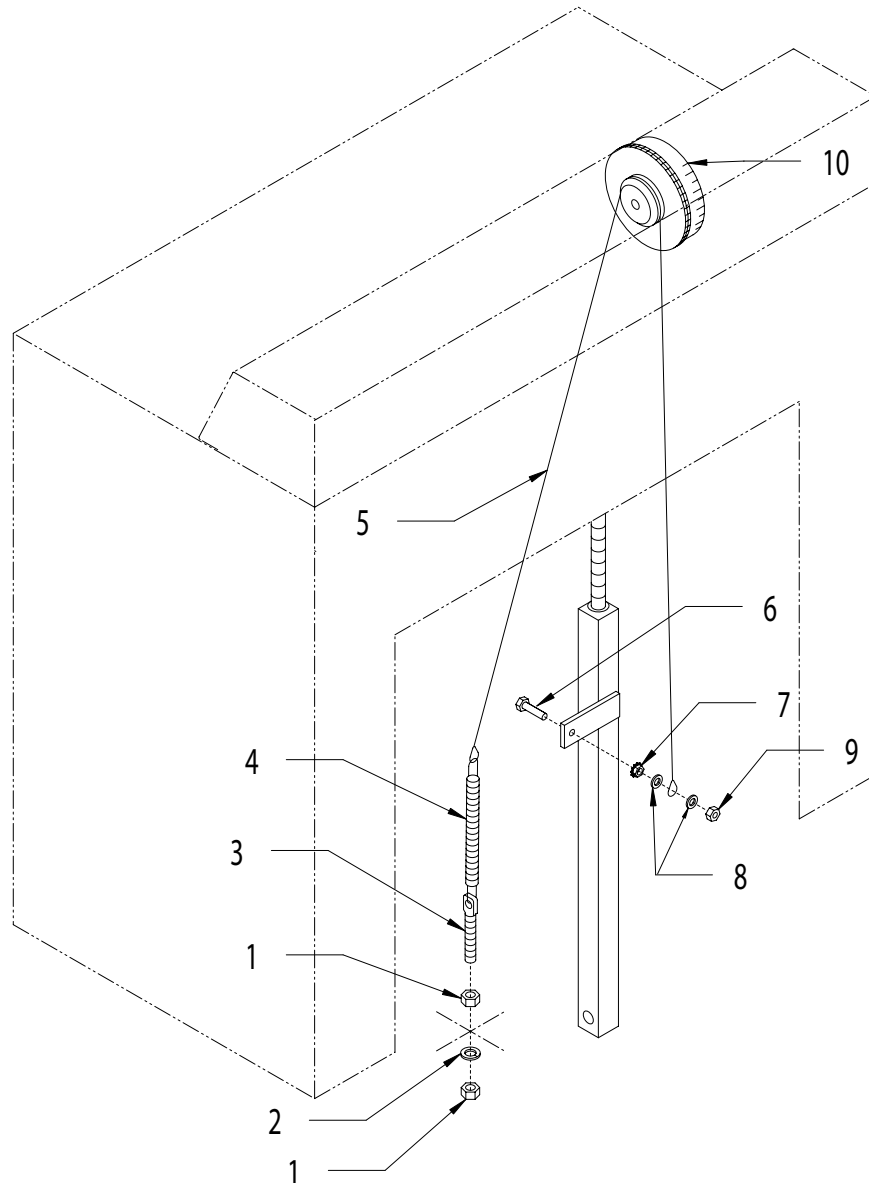
100 Thomas Johnson Drive, Frederick, MD 21702-4600 USA
 Phone (301) 663-1600 • 1-800-638-3326
 Fax (301) 663-1607 • 1-800-447-3326
 Website: www.edcoinc.com • Email: sales@edcoinc.com

Printed in USA
 ©2004

ILLUSTRATION 4 : GUIDE BAR ASSEMBLY



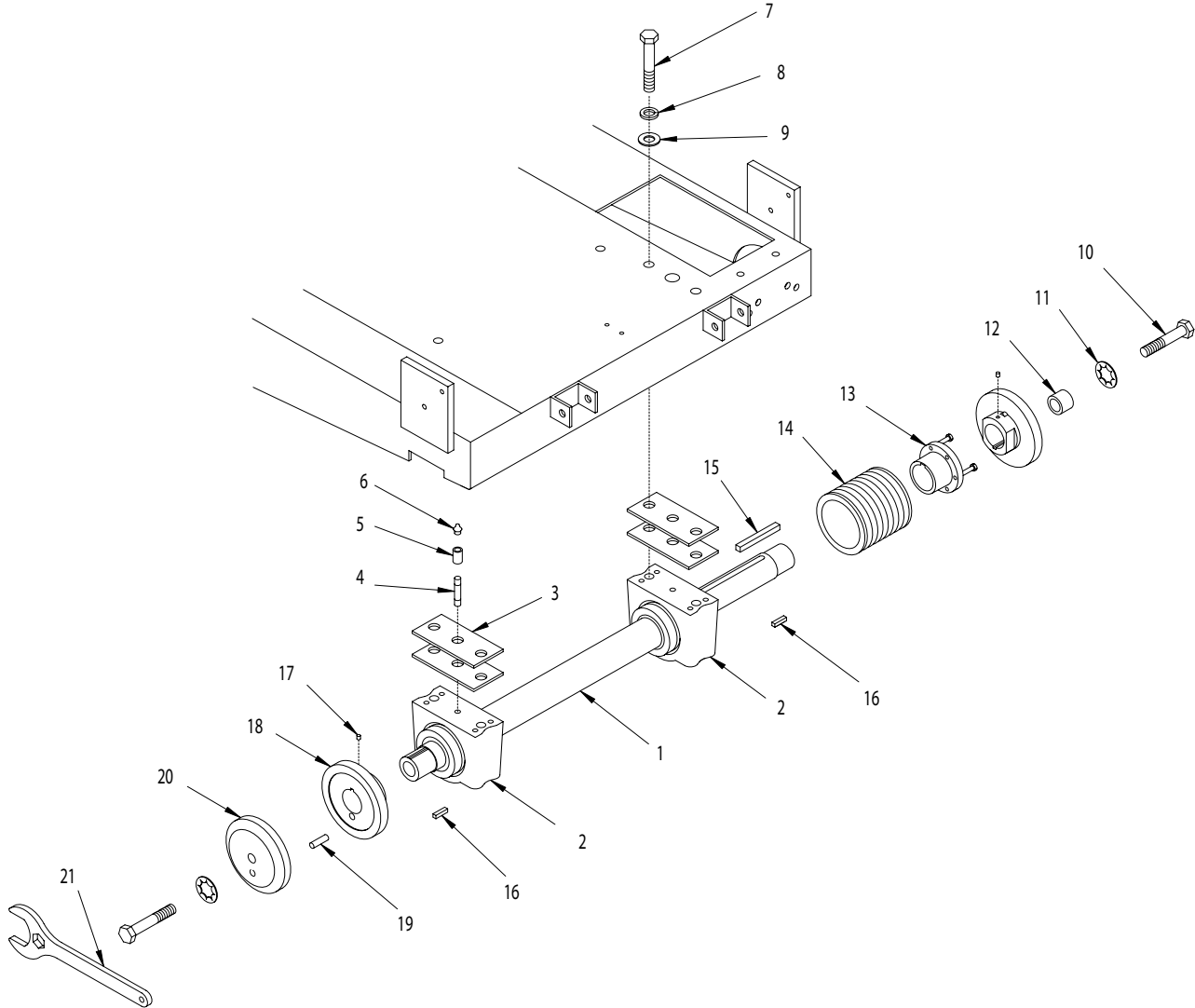
ITEM#	PART#	DESCRIPTION	QTY.
1	57119	GUIDE BAR	1
2	10202	SCREW, CAP 1/2-20x3	2
3	10205	NUT, LOCK 1/2-20	2
4	50514	POINTER, FRONT 24-1/2"	1
5	57120	AXLE TUBE, GUIDE WHEEL	1
6	57171	SPACER TUBE 5-1/16, GUIDE BAR WHEEL	2
7	50536	WHEEL 5x1-1/2x3/4" BORE	1
8	10304	SCREW, CAP 1/2-20x1	2

ILLUSTRATION 5 : BLADE DEPTH GAUGE ASSEMBLY


ITEM #	PART #	DESCRIPTION	QTY.
1	10404	NUT 3/8-16	2
2	10811	WASHER, LOCK 3/8	1
3	10845	BOLT, SPADE 3/8-16x4 1/8	1
4	3636	SPRING , EXT. 6"L ("A" ADAPTER)	1
5	51069	CABLE, DEPTH GAUGE 3/32 x 39"L	1
6	10031	SCREW, CAP 1/4-20x1	1
7	10861	NUT, KEPS 1/4-20	1
8	10602	WASHER, FLAT 1/4	2
9	10150	NUT, HEX NYLON LOCK 1/4-20	1
10	57132	WHEEL, DEPTH GAUGE (SEE ILLUS. 13, ITEM 17-23)	1



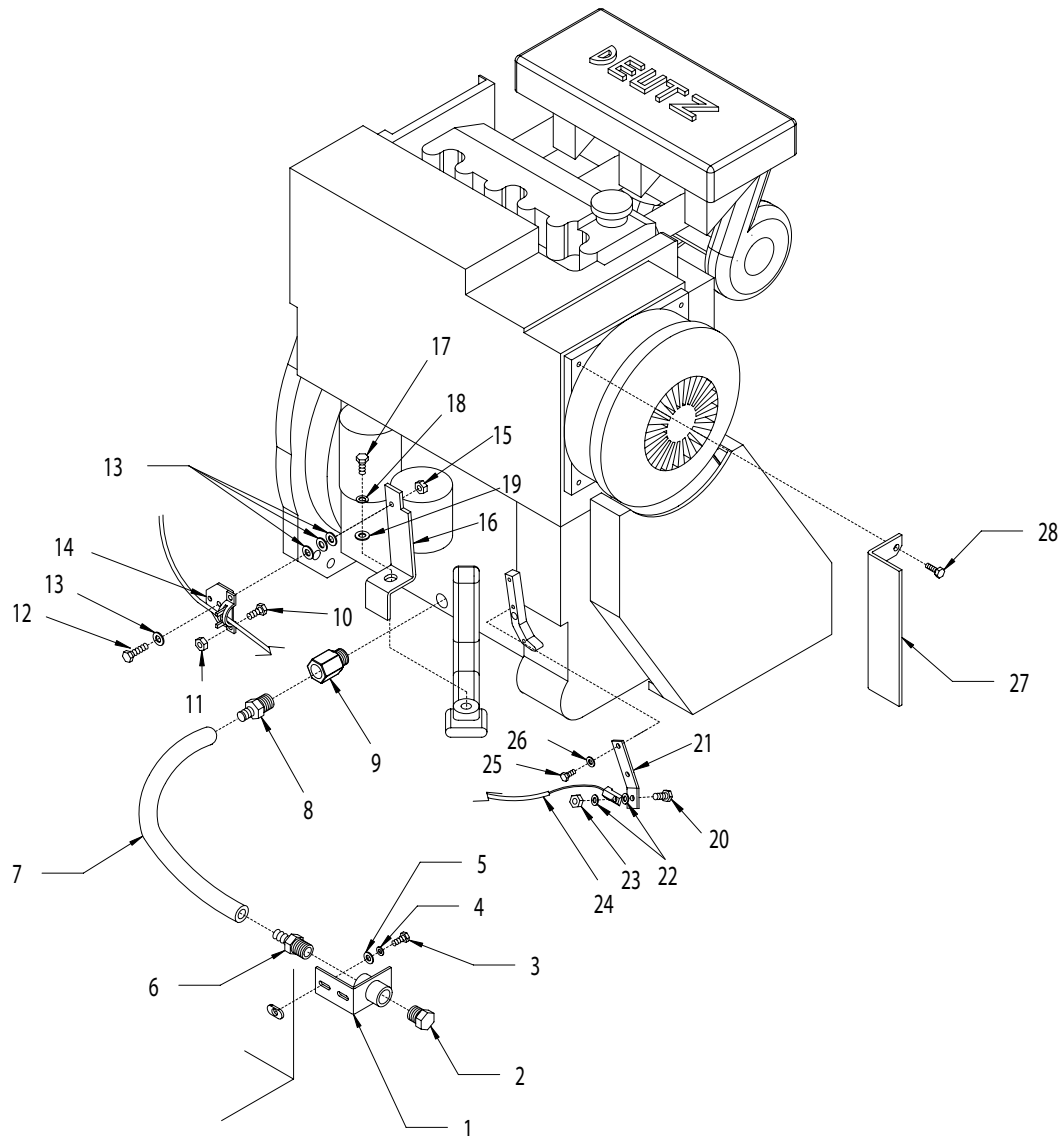
ILLUSTRATION 6 : ARBOR ASSEMBLY



ITEM#	PART#	DESCRIPTION	QTY.	ITEM#	PART#	DESCRIPTION	QTY.
1	57401	ARBOR SHAFT 32"L	1	15	57441	KEY 3/8SQ.x3-3/8	1
2	57157	BEARING, ROLLER 1-3/4" TPB	2	16	10174	KEY 1/4 SQ.x1	2
3	57115	SHIM, ARBOR BEARING	4	17	10161	SCREW, SET 1/4-28x5/16	2
4	10699	PIPE NIPPLE 1/8 NPT x 2" (BLACK)	2	18		ARBOR BACKING PLATE	2
5	10585	PIPE COUPLING 1/8 NPT (BLACK STEEL)	2		57404	6" (USED FOR 30-36" BLADES)	
6	10953	FITTING, GREASE 1/8NPT STRAIGHT	2		57402	5" (USED FOR 14-26" BLADES)	
7	10483	SCREW, CAP 5/8-18x3-3/4	4	19	50722	PIN, SHEAR PROOF 3/8x1-1/2	1
8	10041	WASHER, LOCK 5/8	4	20		ARBOR BLADE CAP	1
9	10073	WASHER, FLAT 5/8	4		57405	6" (USED FOR 30-36" BLADES)	
10	10359	SCREW, CAP 5/8-11x3-1/4	2		57403	5" (USED FOR 14-26" BLADES)	
11	10457	WASHER, LOCK, INT. TOOTH 5/8"	2	21	57406	WRENCH, ARBOR COMBINATION	2
12	10096	COLLAR, LOCKING 5/8"ID	1			2" & 15/16"	
13	57075	BUSHING, SHEAVE SK X 1-3/4"BORE	1			*NOTE: SEE ILLUSTRATION 12 FOR BELT AND PULLEY CHART	
*14	57466	**SHEAVE 5.60"OD X 9GR.3V X SK	1			**THESE SHEAVES REQUIRE BUSHING, ITEM#13	
	57467	**SHEAVE 4.75"OD X 9GR.3V X SK					
	57465A	SHEAVE 4.0"OD X 9GR.3V X 1.75"B					



ILLUSTRATION 7 : THROTTLE GROUPING



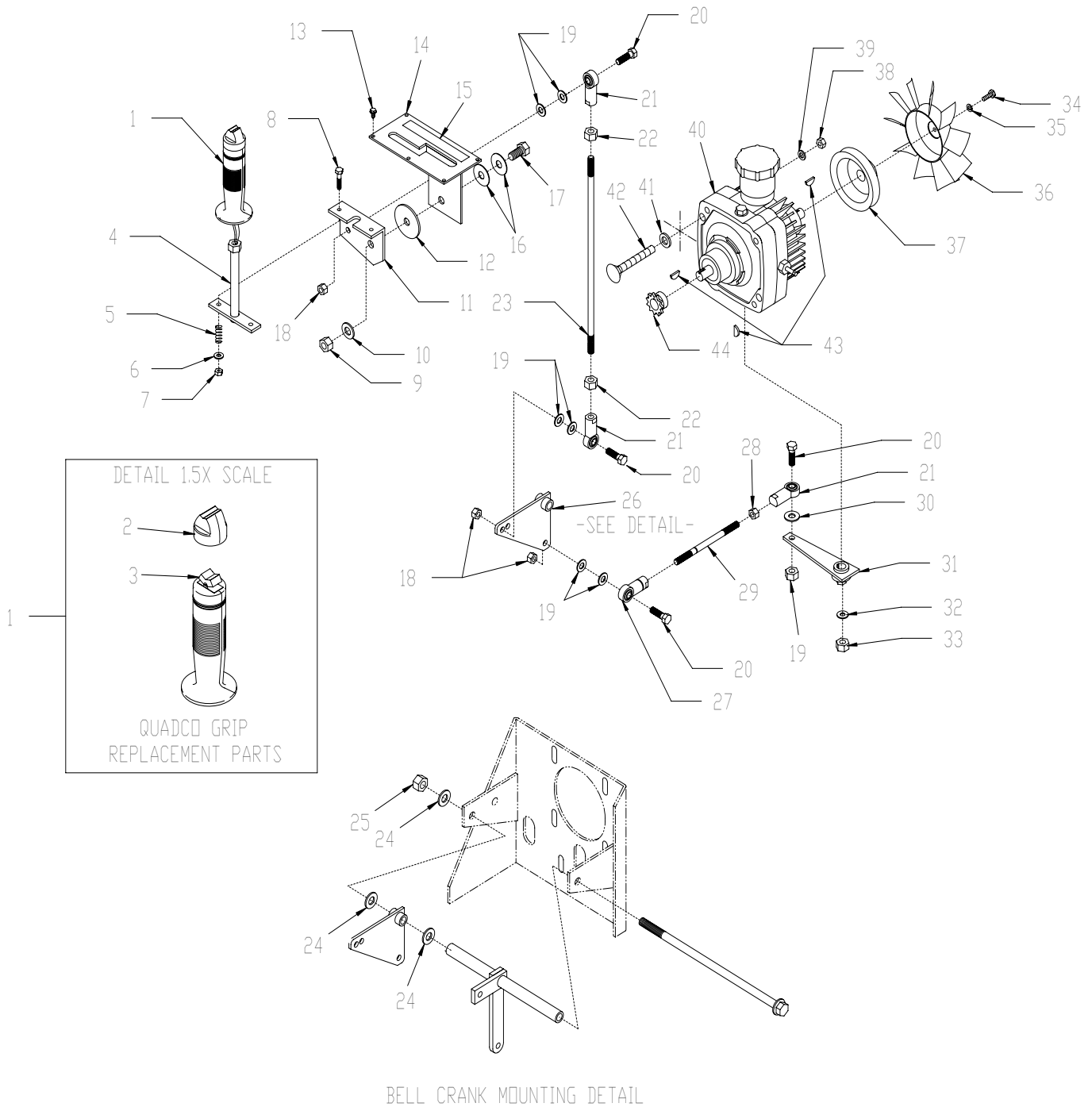
ITEM#	PART#	DESCRIPTION	QTY.	ITEM#	PART#	DESCRIPTION	QTY.
1	57159	BRACKET, OIL DRAIN	1	16	57433	BRACKET, THROTTLE CABLE	1
2	50552	PIPE PLUG 1/2 NPT (BRASS)	1	17	10499	SCREW, CAP 1/2-13x3	1
3	10018	SCREW, CAP 1/4-20x3/4	2	18	10045	WASHER, LOCK 1/2	1
4	10038	WASHER, LOCK 1/4	2	19	10312	WASHER, FLAT 1/2	1
5	10602	WASHER, FLAT 1/4	2	20	10018	SCREW, CAP 1/4-20x3/4	1
6	80061	BARB, PUSH-ON 1/2 HOSE x 1/2 MPT	1	21	57434	ARM, THROTTLE CABLE	1
7	80063	HOSE, PUSH-ON 1/2" ID x 17" L (BLACK)	1	22	10602	WASHER, FLAT 1/4	2
8	50554	BARB, PUSH-ON 1/2 HOSE x 3/8 MPT	1	23	10015	NUT, LOCK 1/4-20	1
9	57443	ADAPTER, METRIC 18MM x 1.5 x 3/8 FPT	1	24	50560	CABLE, VERNIER ADJ. LOCKING CONTROL (THROTTLE CABLE, SEE ILLUS. 13, ITEM #9)	1
10	10834	SCREW, CAP 1/4-20 X 1/2	2	25	11634	SCREW, CAP M6x1.0Px20MM	2
11	10015	NUT, LOCK 1/4-20	2	26	11636	WASHER, LOCK 6MM	2
12	10018	SCREW, CAP 1/4-20 X 3/4	1	27	57444	BRACKET, HANDLE BAR STOP	1
13	10602	WASHER, FLAT 1/4	4	28	-----	SCREW (INCLUDED w/ ENGINE)	2
14	50723	MNTG. PLATE, THROTTLE CABLE OUTPUT	1				
15	10015	NUT, LOCK 1/4-20	2				



100 Thomas Johnson Drive, Frederick, MD 21702-4600 USA
 Phone (301) 663-1600 • 1-800-638-3326
 Fax (301) 663-1607 • 1-800-447-3326
 Website: www.edcoinc.com • Email: sales@edcoinc.com

Printed in USA
 ©2004

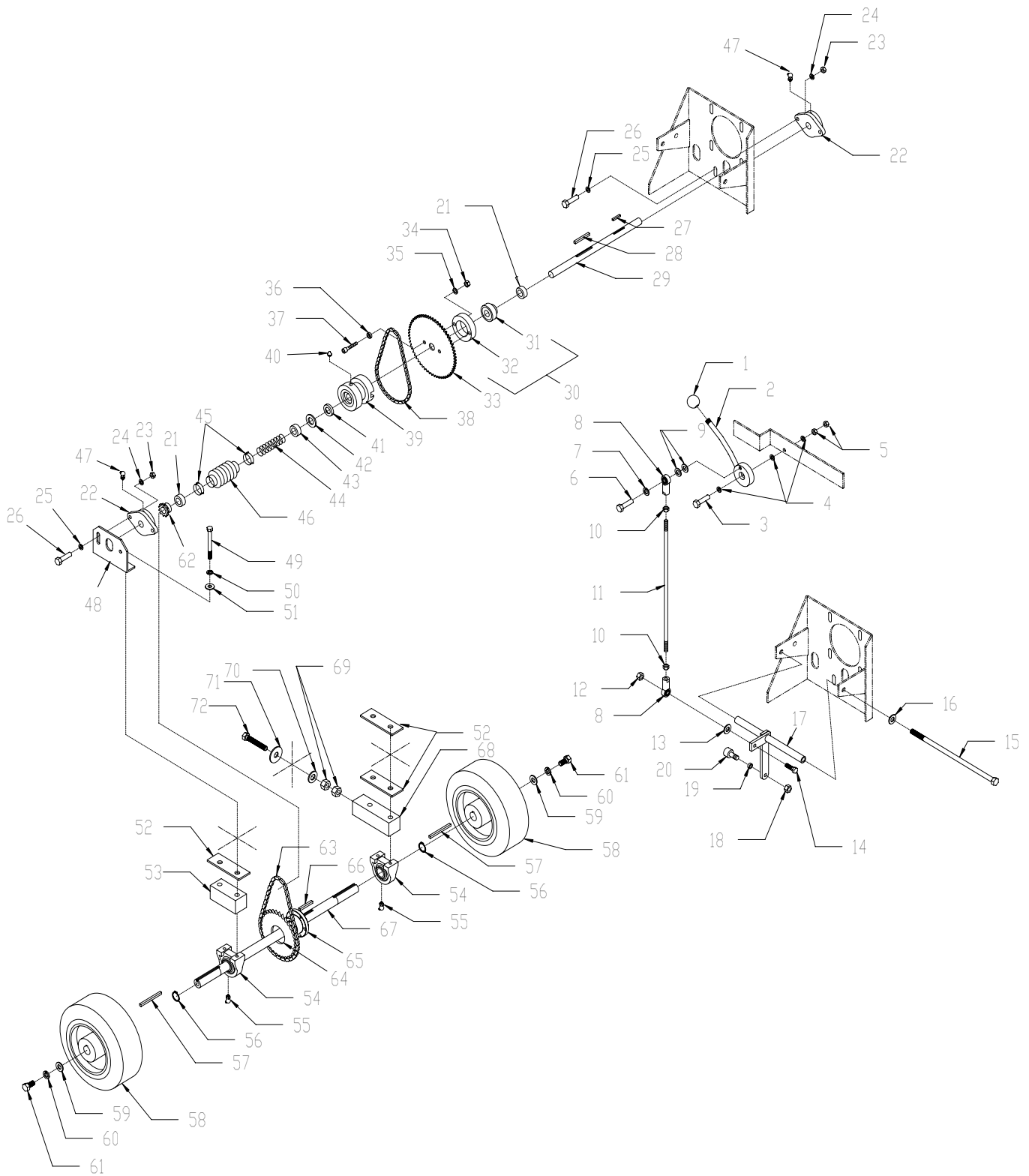
ILLUSTRATION 8 : TRANSMISSION ASSEMBLY



PARTS LISTING - ILLUSTRATION 8 : TRANSMISSION ASSEMBLY			
1	50610	GRIP w/ ROCKER SWITCH, QUADCO G301	1
2	50615	CAP (RUBBER BOOT) "QUADCO" GRIP	1
3	50614	SWITCH, ROCKER, C&K #7105	1
4	50608	LEVER, DRIVE	1
5	57471	SPRING, COMP. .468"OD x 1.25" FL	2
6	10602	WASHER, FLAT 1/4	2
7	10015	NUT, LOCK 1/4-20	2
8	10315	SCREW, CAP 1/4-20x1-1/2	2
9	10205	NUT, LOCK 1/2-20	1
10	10312	WASHER, FLAT 1/2	1
11	50613	PLATE, DRIVE LEVER PRESSURE	1
12	50428	WASHER, FIBER 2-1/4OD x 1/2ID x 1/8	1
13	10877	SCREW, CAP STSHW 10-24x1/2	5
14	50607	GATE, DRIVE LEVER	1
15	91144	DECAL, DRIVE CONTROL	1
16	10426	WASHER, BELLEVILLE 1/2IDx3/64THK	2
17	10321	SCREW, CAP 1/2-20x1-1/4	1
18	10004	NUT, LOCK 3/8-24	4
19	10025	WASHER, FLAT 3/8	6
20	10309	SCREW, CAP 3/8-24x1-1/4	4
21	10919	ROD END, FEMALE 3/8-24 R.H. THREAD	3
22	10014	NUT 3/8-24	2
23	57124	LINKAGE, ROD 3/8x14-5/8"L	1
24	10312	WASHER, FLAT 1/2	3
25	10407	NUT, LOCK 1/2-13	1
26	57123	BELLCRANK, DRIVE CONTROL	1
27	10919L	ROD END, FEMALE 3/8-24 L.H. THREAD	1
28	10014	NUT 3/8-24	1
29	50420	LINKAGE, ROD 3/8x5-3/4"L	1
30	10025	WASHER, FLAT 3/8	1
31	50422	TRANS. CONTROL ARM	1
32	10811	WASHER, LOCK 3/8	1
33	10404	NUT 3/8-16	1
34	10018	SCREW, CAP 1/4-20x3/4	1
35	10038	WASHER, LOCK 1/4	1
36	50266	FAN BLADE W/ PLATE 7", TRANSMISSION	1
37	50062	SHEAVE, TRANS. 4"OD x 1 GR x .671"B	1
38	10404	NUT 3/8-16	4
39	10811	WASHER, LOCK 3/8	4
40	50061	TRANSMISSION, HYDROSTATIC	1
41	10040	WASHER, GARRET 17/32"ID x 1"OD x .054" THK	4
42	10909	BOLT, CARRIAGE 3/8-16x3	4
43	50071	KEY, WOODRUFF 1/8x1/2 (#404)	3
44	57046	SPROCKET #4010 x .67" BORE	1



ILLUSTRATION 9 : CLUTCH & REAR AXLE ASSEMBLY



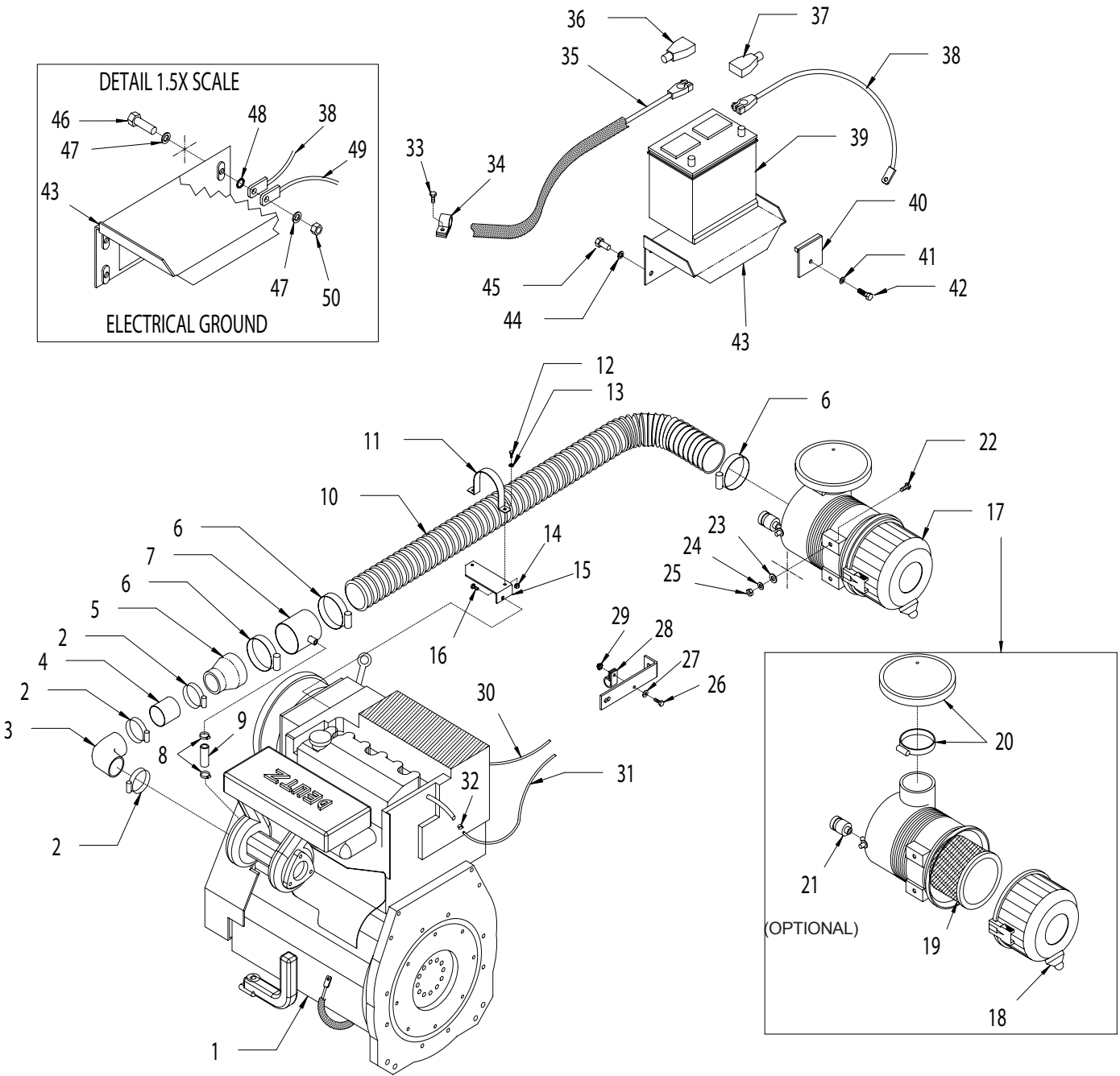
PARTS LISTING - ILLUSTRATION 9 : CLUTCH & REAR AXLE ASSEMBLY							
ITEM #	PART#	DESCRIPTION	QTY.	ITEM #	PART #	DESCRIPTION	QTY.
1	14023	KNOB, BALL 1-3/8 W/ 1/2-13THD., BLK.	1	35	10811	WASHER, LOCK 3/8	2
				36	10113	SPACER, STL 9/16ODx3/8IDx7/32"	2
2	50611	LEVER, CLUTCH	1	37	10354	SCREW, SKT.HD.CAP 3/8-24x1-3/4	2
3	10816	SCREW, CAP 3/8-24x1-1/2	1	38	57041	CHAIN #40 x 27" LOA.	1
4	10025	WASHER, FLAT 3/8	3	39	57042	CLUTCH, DOG BLOCK	1
5	10004	NUT, LOCK 3/8-24	2	40	10808	FITTING, GREASE 1/4-28 STRAIGHT	1
6	10309	SCREW, CAP 3/8-24x1-1/4	1	41	3695	SEAL, OIL .750x1.375x.250	1
7	10811	WASHER, LOCK 3/8	1	42	10009	WASHER, FLAT 3/4	1
8	10919	ROD END, FEM. 3/8-24 R.H. THD.	2	43	57044	CLUTCH SPRING CUP	1
9	10025	WASHER, FLAT 3/8	2	44	10922	SPRING, COMP. 1"ODx3.75" FL	1
10	10014	NUT 3/8-24	2	45	10768	CLAMP, HOSE, SAE #16, ADJ. TO 1-1/2"	2
11	50612	LINKAGE, ROD 3/8x17"L	1	46	10930	BELLOWS 1-1/4IDx2-3/8ELx1-3/4RRL	1
12	10004	NUT, LOCK 3/8-24	1	47	10960	FITTING, GREASE 1/4-28x45D	2
13	10025	WASHER, FLAT 3/8	1	48	57116	MOUNT, JACKSHAFT BEARING	1
14	10309	SCREW, CAP 3/8-24x1-1/4	1	49	10376	SCREW, CAP 1/2-13x5	4
15	10355	SCREW, CAP 1/2-13x11	1	50	10045	WASHER, LOCK 1/2	4
16	10312	WASHER, FLAT 1/2	1	51	10312	WASHER, FLAT 1/2	4
17	57032	BELL CRANK, CLUTCH	1	52	57114	SHIM, AXLE BEARING	3
18	10004	NUT, LOCK 3/8-24	1	53	57112	SPACER, BEARING 4-1/2"	1
19	10113	SPACER, STL 9/16ODx3/8IDx7/32"	1	54	50314	BEARING, BALL 1-1/4"TPB	2
20	10924	CAM FOLLOWER BEARING 3/4" x 3/8-24 THREAD	1	55	10960	FITTING, GREASE 1/4-28x45D	2
				56	10906	RETAINING RING, EXT. 1"	2
21	10428	COLLAR, LOCKING 3/4"ID	2	57	10132	KEY 1/4 SQ.x3	2
22	50049	BEARING, BALL 3/4" 2-HOLE FLANGE	2	58	57034	WHEEL 10x3x1-1/4" BORE	2
				59	10433	WASHER, BELLEVILLE 1/2IDx3/32THK	2
23	10014	NUT 3/8-24	4	60	10045	WASHER, LOCK 1/2	2
24	10811	WASHER, LOCK 3/8	4	61	10914	SCREW, CAP 1/2-13x1	2
25	10025	WASHER, FLAT 3/8	4	62	50436	SPROCKET #40B10x3/4" BORE	1
26	10309	SCREW, CAP 3/8-24x1-1/4	4	63	57282	CHAIN #40 x 29"+ OL + CL	1
27	10016	KEY 3/16 SQ.x1-1/2	1	64	57037B	SPROCKET #40SDS48	1
28	10307	KEY 1/4 SQ.x2-1/4	1	65	10064	BUSHING, SHEAVE SDS X 1-1/4"BORE	1
29	57045	JACKSHAFT, CLUTCH 3/4x14"L	1	66	10071	KEY 1/4 SQ.x2-1/2	1
30	57038A	BEARING & CARRIER ASSY., CLUTCH	1	67	57129	AXLE SHAFT 1-1/4"DIA.x29"L	1
				68	57113	SPACER, BEARING 6"	1
31	57038	BEARING, BALL 3/4"IDx1.8504" OD	1	69	10417	NUT 1/2-13	2
32	57039	CARRIER, CLUTCH BEARING	1	70	10312	WASHER, FLAT 1/2	1
33	57040	SPROCKET, CLUTCH #40A48x13/16" BORE	1	71	10433	WASHER, BELLEVILLE 1/2IDx3/32THK	1
				72	10392	BOLT, TAP 1/2-13 X 4 (FULL THREAD)	1
34	10014	NUT 3/8-24	2				



100 Thomas Johnson Drive, Frederick, MD 21702-4600 USA
 Phone (301) 663-1600 • 1-800-638-3326
 Fax (301) 663-1607 • 1-800-447-3326
 Website: www.edcoinc.com • Email: sales@edcoinc.com

Printed in USA
 ©2004

ILLUSTRATION 10 : ENGINE GROUPING

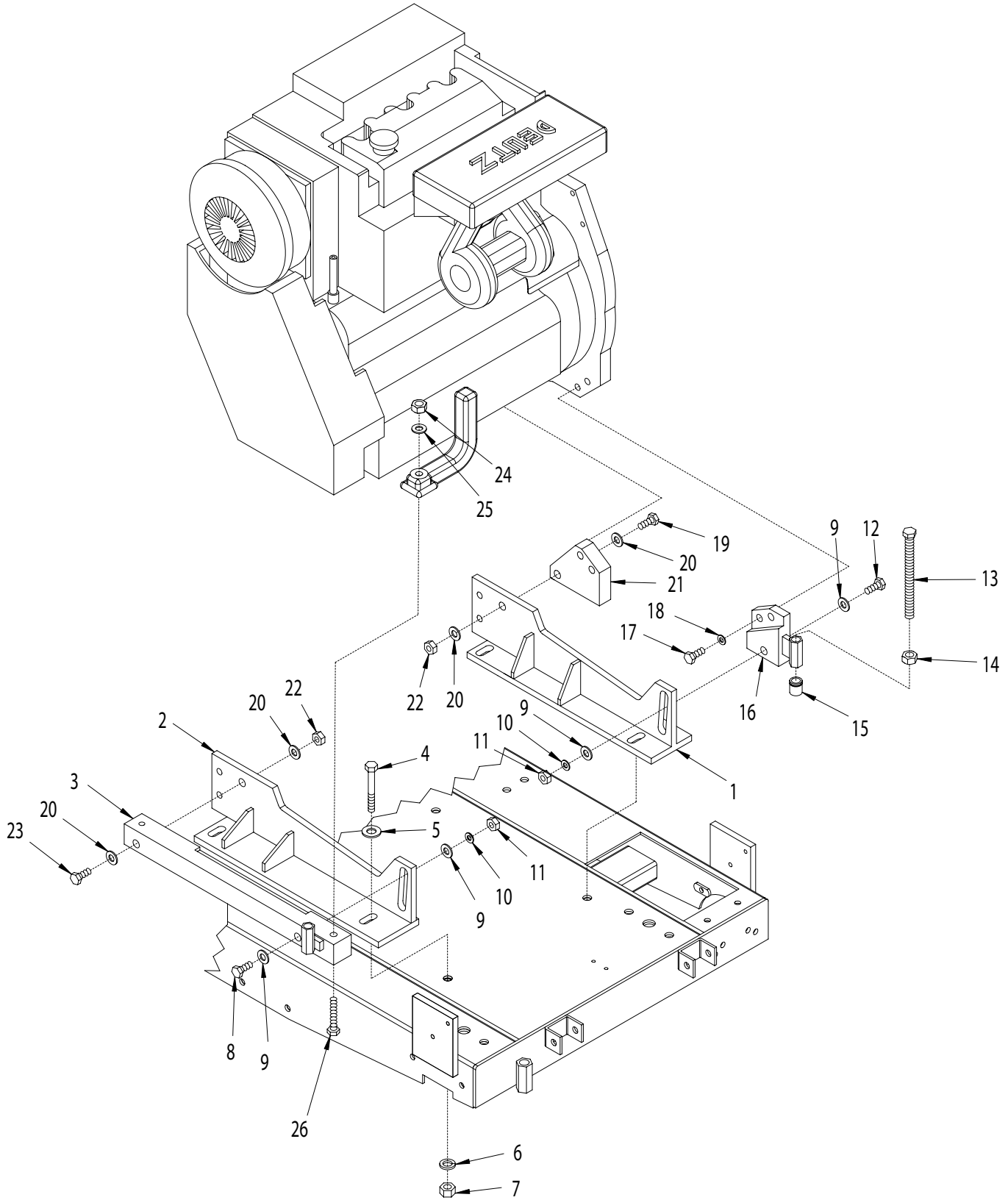


PARTS LISTING - ILLUSTRATION 10 : ENGINE GROUPING

ITEM#	PART#	DESCRIPTION	QTY.	ITEM#	PART#	DESCRIPTION	QTY.
1	15049	ENGINE, DEUTZ 57 HP TIER I TURBO CHARGED	1	26	10018	SCREW, CAP 1/4-20x3/4	2
2	10745	CLAMP, HOSE, SAE #36, ADJ. TO 2-3/4	3	27	10602	WASHER, FLAT 1/4	2
3	10638	HOSE ELBOW, REDUCER 2" TO 1-3/4"	1	28	11565	CLAMP, LOOM, 5/8" (SAE SIZE 10)	2
4	57461	PIPE, 2"ODx2"L, AIR CLEANER	1	29	10861	NUT, KEPS 1/4-20	2
5	15153	ADAPTOR, RUBBER, 3" X 2"	1	30	57477	HOSE, FUEL LINE 1/4"IDx40"L	1
6	10849	CLAMP, HOSE, SAE #52, ADJ. TO 3-3/4	3	31	57478	HOSE, FUEL RETURN LINE 1/4"IDx50"L	1
7	57438	TUBE, CRANK CASE BREATHER	1	32	10762	CLAMP, HOSE SPRING-TYPE 3/8" GREEN	4
8	50069	CLAMP, HOSE, SAE #6, ADJ. TO 13/16	2	33	10846	SCREW, CAP STSHW 1/4-20 X 1/2	1
9	57475	HOSE, CRANK CASE BREATHER 1/2"IDx2"L	1	34	41124	CLAMP, CONDUIT 1/2"EMT (SNAP-STRAP)	1
10	57476	HOSE, AIR CLEANER 3"IDx34"L	1	35	57055	CABLE, BATTERY 4 GA. x 53" (RED)	1
11	57469	HANGER, HOSE 3.25"	1	36	10928	INSULATOR, BAT.TERM.POST (RED)	1
12	10834	SCREW, CAP 1/4-20x1/2	2	37	10929	INSULATOR, BAT.TERM.POST (BLACK)	1
13	10602	WASHER, FLAT 1/4	2	38	50323B	CABLE, BATTERY 4 GA. x 12" (BLACK)	1
14	10015	NUT, LOCK 1/4-20	2	39	57416	BATTERY 12V/880 CCA (POST TERM.)	1
15	57454	BRACKET, AIR CLEANER HOSE	1	40	57418	CLAMP, BATTERY HOLD DOWN	1
16	-----	SCREW (INCLUDED w/ ENGINE)	1	41	10811	WASHER, LOCK 3/8	1
17	15150	AIR CLEANER ASSY., 3-FW-E1	1	42	10055	SCREW, CAP 3/8-16x1	1
18	15144	AIR CLEANER DUCKBILL DRAIN	1	43	57417	TRAY, BATTERY	1
19	15151	ELEMENT, AIR FILTER PRIMARY	1	44	10811	WASHER, LOCK 3/8	3
20	15152	CAP, RAIN, AIR CLEANER (INCLUDES CLAMP)	1	45	10907	SCREW, CAP 3/8-16x3/4	3
21	15154	AIR CLEANER DUST LOAD INDICATOR (OPT.)	1	46	10333	SCREW, CAP 3/8-16x1-1/4	1
22	10053	SCREW, CAP 5/16-18x3/4	2	47	10811	WASHER, LOCK 3/8	2
23	10213	WASHER, FLAT 5/16	2	48	10453	WASHER, LOCK, INT. TOOTH 3/8	1
24	10801	WASHER, LOCK 5/16	2	49	57456	CABLE, EYE-EYE 4GA. X 48" (BLACK)	1
25	10054	NUT 5/16-18	2	50	10404	NUT 3/8-16	1



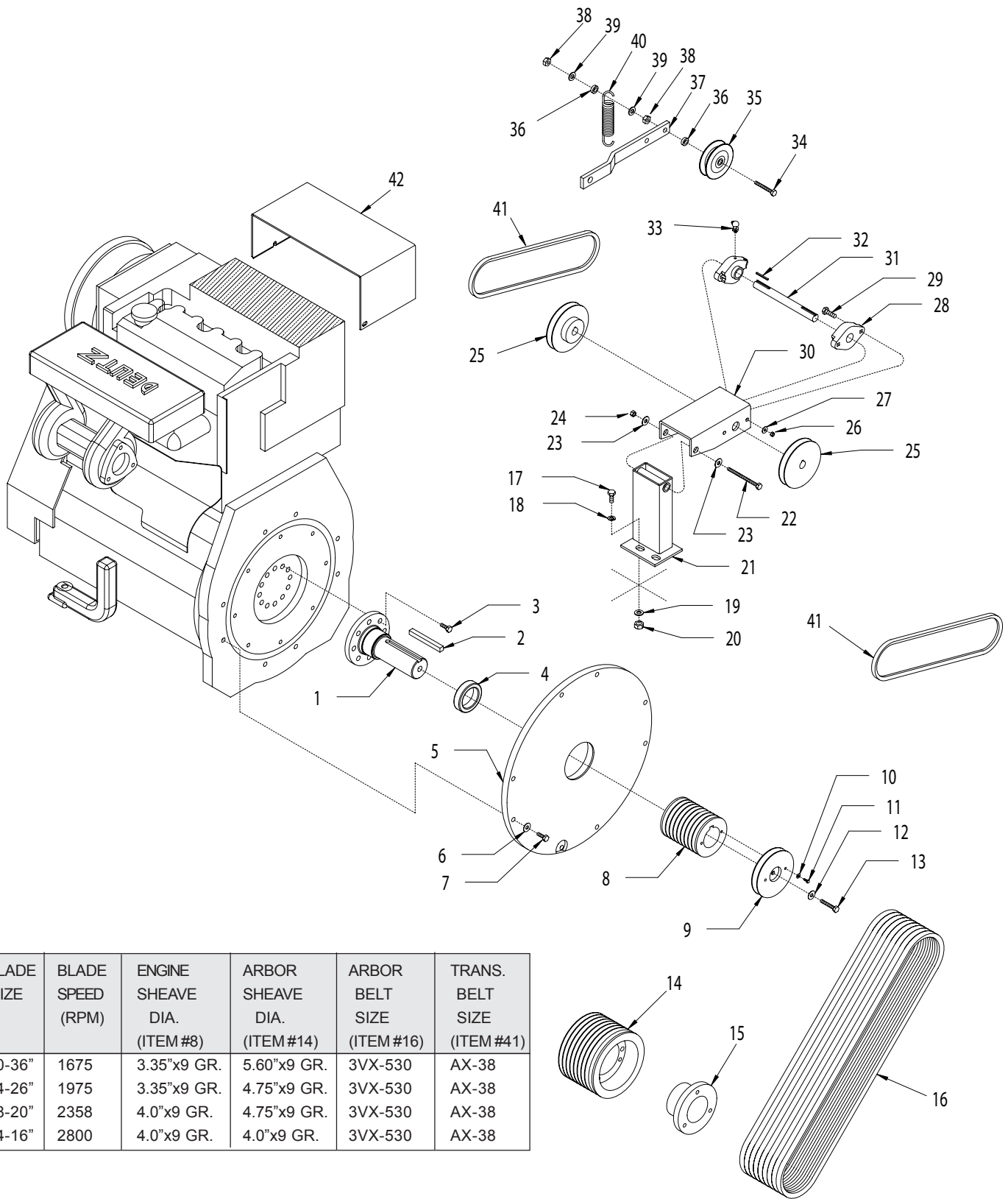
ILLUSTRATION 11: ENGINE MOUNT GROUPING



PARTS LISTING - ILLUSTRATION 11 : ENGINE MOUNT GROUPING			
ITEM #	PART #	DESCRIPTION	QTY.
1	57419	MOUNT BRKT., ENGINE LEFT	1
2	57420	MOUNT BRKT., ENGINE RIGHT	1
3	57421	MOUNT BAR, ENGINE RIGHT	1
4	11628	SCREW, CAP 5/8-11x4	4
5	10073	WASHER, FLAT 5/8	4
6	10041	WASHER, LOCK 5/8	4
7	10046	NUT 5/8-11	4
8	10359	SCREW, CAP 5/8-11x3-1/4	1
9	10073	WASHER, FLAT 5/8	4
10	10041	WASHER, LOCK 5/8	2
11	10046	NUT 5/8-11	2
12	10326	SCREW, CAP 5/8-11x3	1
13	57414	BOLT, TAP 5/8-11 X 6 FULL THD.	2
14	10046	NUT 5/8-11	2
15	57413	TOGGLE PAD 1" DIA.x1" HIGHx5/8-11	2
16	57422	MOUNT, ENGINE LEFT FRONT	1
17	11635	SCREW, CAP M14 X 2.0P X 50MM	4
18	11632	WASHER, LOCK 14MM	4
19	10326	SCREW, CAP 5/8-11x3	1
20	10073	WASHER, FLAT 5/8	4
21	57423	MOUNT, ENGINE LEFT REAR	1
22	10809	NUT, LOCK 5/8-11	2
23	10359	SCREW, CAP 5/8-11x3-1/4	1
24	10155	NUT, HEX NYLON LOCK 1/2-13	1
25	10312	WASHER, FLAT 1/2	1
26	10386	SCREW, CAP 1/2-13x4-1/2	1



ILLUSTRATION 12 : BELT DRIVE GROUPING

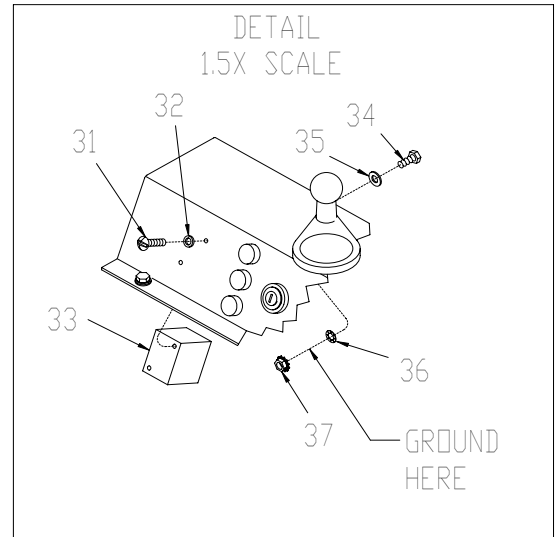
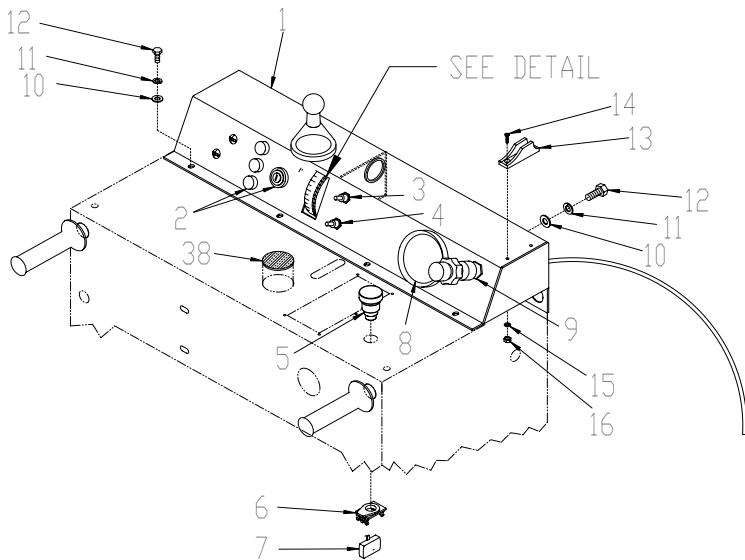
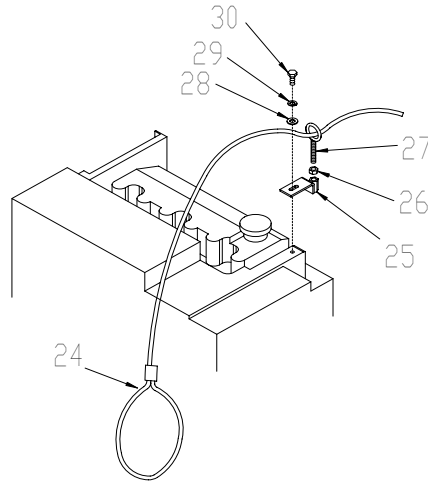
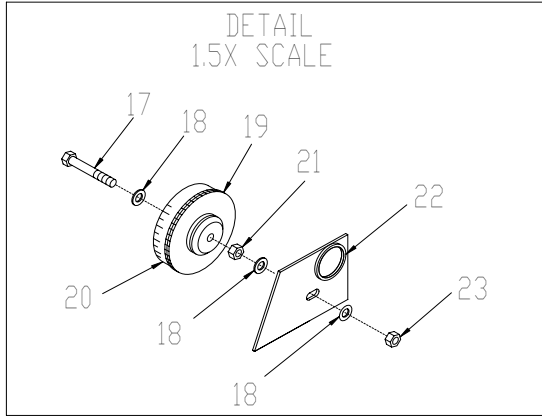


BLADE SIZE	BLADE SPEED (RPM)	ENGINE SHEAVE DIA. (ITEM #8)	ARBOR SHEAVE DIA. (ITEM #14)	ARBOR BELT SIZE (ITEM #16)	TRANS. BELT SIZE (ITEM #41)
30-36"	1675	3.35"x9 GR.	5.60"x9 GR.	3VX-530	AX-38
24-26"	1975	3.35"x9 GR.	4.75"x9 GR.	3VX-530	AX-38
18-20"	2358	4.0"x9 GR.	4.75"x9 GR.	3VX-530	AX-38
14-16"	2800	4.0"x9 GR.	4.0"x9 GR.	3VX-530	AX-38

PARTS LISTING - ILLUSTRATION 12 : BELT DRIVE GROUPING			
ITEM #	PART #	DESCRIPTION	QTY.
1	57407	SHAFT, STUB 1-3/4"	1
2	57441	KEY 3/8 SQ.x3-3/8	1
3	11633	SCREW, CAP M10x1.0Px50mm	8
4	57409	BEARING, RADIAL BALL 55x90x18MM	1
5	57408	ADAPTER PLATE 16", HOUSING	1
6	11631	WASHER, LOCK 10MM	8
7		SCREW, CAP	
	77267	M10x1.5Px35MM	7
	77266	M10X1.5Px30MM	1
8		SHEAVE, ENGINE	1
	57464	3.35"OD X 9GR.3V X 1.75"B	
	57465	4.0"OD X 9GR.3V X 1.75"B	
9	57468	SHEAVE 4.25"OD X 1GR.AX 1/2"B	1
10	10038	WASHER, LOCK 1/4	2
11	10905	SCREW, CAP 1/4-20x1-1/4	2
12	10045	WASHER, LOCK 1/2	1
13	10321	SCREW, CAP 1/2-20x1-1/4	1
14		SHEAVE	1
	57466	5.60" ODx9GR.3VxSK (REQUIRES BUSHING, ITEM 15)	
	57467	4.75" ODx9GR.3VxSK (REQUIRES BUSHING, ITEM 15)	
	57465A	4.0"OD X 9GR.3V X 1.75"B	
15	57075	BUSHING, SHEAVE SKx1-3/4" BORE	1
16	10243	BELT 3VX-530 COG (SINGLE)	9
17	10321	SCREW, CAP 1/2-20x1-1/4	2
18	10312	WASHER, FLAT 1/2	2
19	10045	WASHER, LOCK 1/2	2
20	10072	NUT 1/2-20	2
21	57457	MOUNT, JACKSHAFT DECK	1
22	10409	SCREW, CAP 1/2-20x4-1/2	1
23	10312	WASHER, FLAT 1/2	2
24	10154	NUT, HEX NYLON LOCK 1/2-20	1
25	57470	SHEAVE 4.0" ODx1 GR.Ax5/8" BORE	2
26	10150	NUT, HEX NYLON LOCK 1/4-20	4
27	10602	WASHER, FLAT 1/4	4
28	80009	BEARING, BALL 5/8" 2-HOLE FLANGE	2
29	10031	SCREW, CAP 1/4-20x1	4
30	57458	MOUNT, JACKSHAFT	1
31	57429	JACKSHAFT, TRANS. INPUT	1
32	10016	KEY 3/16 SQ. x 1-1/2	2
33	10960	FITTING, GREASE 1/4-28x45D	2
34	10393	SCREW, CAP 3/8-24x2-1/2	1
35	51226	IDLER PULLEY 2.75 X 3/4FLAT X 3/8	1
36	10113	SPACER, STEEL 9/16OD X 3/8ID X 7/32	2
37	57472	IDLER ARM	1
38	10004	NUT, LOCK 3/8-24	2
39	10025	WASHER, FLAT 3/8	2
40	50074	SPRING, EXT. 1" ODx3-15/16	1
41	50018	BELT AX-38	2
42	57487	COVER, ENGINE OIL COOLER	1



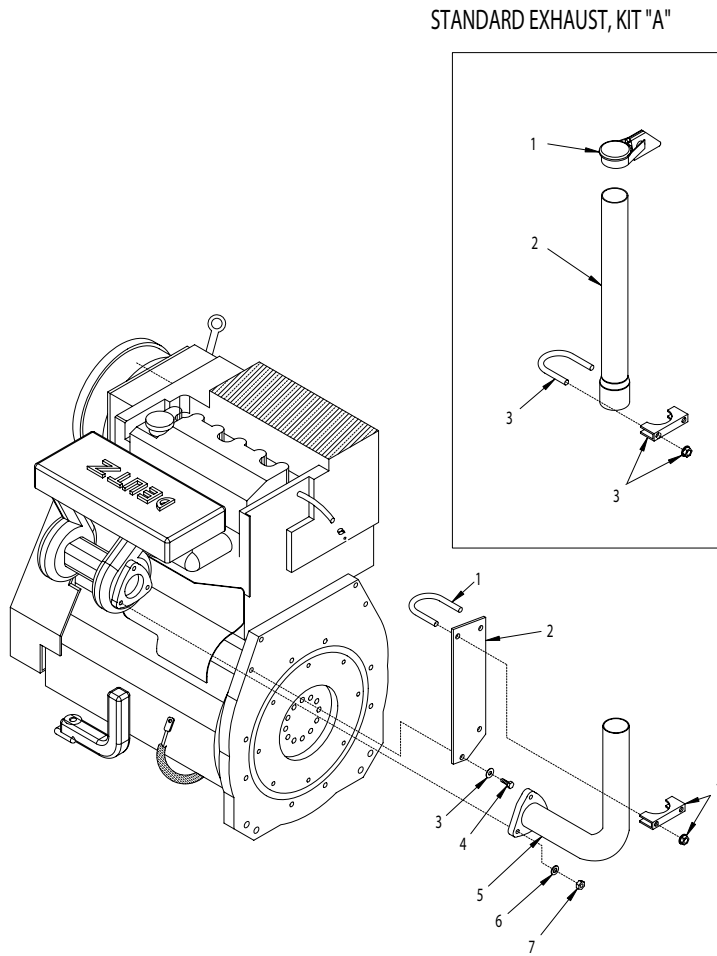
ILLUSTRATION 13 : INSTRUMENT PANEL GROUPING



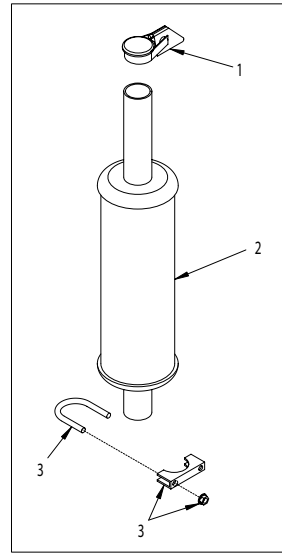
PARTS LISTING - ILLUSTRATION 13 : INSTRUMENT PANEL GROUPING			
ITEM#	PART#	DESCRIPTION	QTY.
1	57428	INSTRUMENT PANEL	1
2	-----	SWITCH & INDICATOR LIGHTS (INCLUDED W/ ENGINE)	1
3	10619	SWITCH, TOGGLE SPDT (BLADE SAVER)	1
4	10633	SWITCH, TOGGLE SPST (WATER PUMP)	1
5	15147	SWITCH PUSH BUTTON ONLY, E-STOP	1
6	15148	SWITCH ASSY. CLIP ONLY, E-STOP	1
7	15167	SWITCH CONTACT BLOCK, N.C. E-STOP	1
8	15177	TACH/HOUR METER (INCLUDED W/ ENGINE)	1
9	50560	CABLE, VERNIER ADJ. LOCKING CONTROL (THROTTLE CABLE, SEE ILLUS. 7, ITEM #24)	1
10	10602	WASHER, FLAT 1/4	8
11	10038	WASHER, LOCK 1/4	8
12		SCREW, CAP	
	10018	1/4-20x3/4	6
	10031	1/4-20x1	2
13	11591	ROPE CLEAT, NYLON JAM 3/16"-5/16"	1
14	11594	SCREW, MACHINE 10-32x5/8 SLT.FLT	2
15	10831	WASHER, LOCK, INT. TOOTH #10	2
16	10832	NUT 10-32	2
17	10336	SCREW, CAP 3/8-24x2-1/4	1
18	10025	WASHER, FLAT 3/8	3
19	57132	WHEEL, DEPTH GAUGE	1
20	57142	STICKER, DEPTH GAUGE	1
21	10004	NUT, LOCK 3/8-24	1
22	57149	GROMMET 1-1/4" ID x 1/8 GRV. x 1-1/2 GD	1
23	10004	NUT, LOCK 3/8-24	1
24	57178	ROPE, GUIDE BAR	1
25	57459	BRACKET, GUIDE ROPE	1
26	10054	NUT 5/16-18	1
27	11593	BOLT, EYE SHOULDER 5/16-18 X 1-1/8	1
28	10602	WASHER, FLAT 1/4	1
29	11636	WASHER, LOCK 6MM	1
30	11634	SCREW, CAP M6x1.0Px20MM	1
31	11618	SCREW, MACHINE 10-24x3/8	2
32	10831	WASHER, LOCK, INT. TOOTH #10	2
33	-----	SWITCH, MURPHY (INCLUDED w/ ENGINE)	1
34	10018	SCREW, CAP 1/4-20x3/4	1
35	10602	WASHER, FLAT 1/4	1
36	10451	WASHER, LOCK, INT. TOOTH 1/4"	1
37	10861	NUT, KEPS 1/4-20	1
38	65022	PLUG, HOLE 2"	1



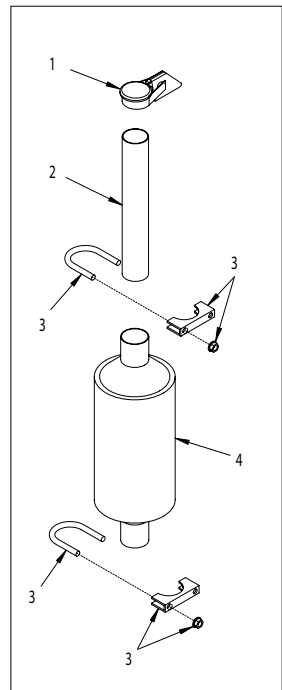
ILLUSTRATION 14 : EXHAUST GROUPING



**OPTIONAL
MUFFLER, KIT "B"**



**OPTIONAL
CATALYTIC
MUFFLER, KIT "C"**



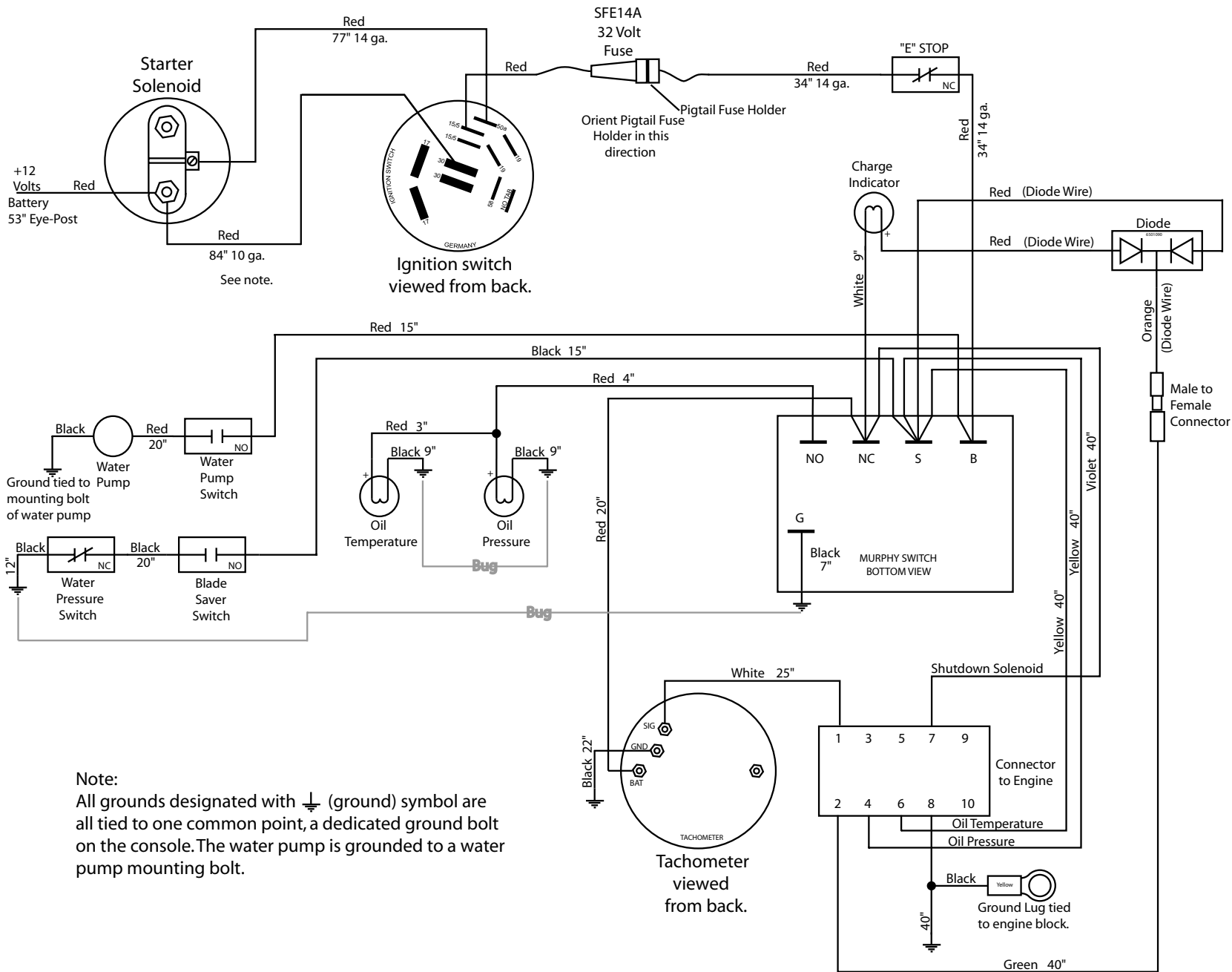
KIT	ITEM	PART #	DESCRIPTION	QTY.
	1	11629	CLAMP, EXHAUST PIPE 1-7/8" HD	1
	2	57452	BRACE, EXHAUST TUBE	1
	3	11631	WASHER, LOCK 10MM	2
	4	77267	SCREW, CAP M10 X 1.5P X 35MM	2
	5	57440	PIPE W/ FLANGE, EXHAUST	1
	6	10801	WASHER, LOCK 5/16	3
	7	-----	NUT (INCLUDED w/ ENGINE)	3
A		57453K	EXHAUST KIT	
	1	15159	CAP, RAIN, EXHAUST 1-7/8"	1
	2	57453	PIPE, EXHAUST 1-7/8 X 18	1
	3	11630	CLAMP, EXHAUST PIPE 2" HD	1
B		15160K	MUFFLERKIT	
	1	15161	CAP, RAIN, EXHAUST 2"	1
	2	15160	MUFFLER, 1-7/8" TO 2"	1
	3	11630	CLAMP, EXHAUST PIPE 2" HD	1
C		15155K	CATALYTIC MUFFLER KIT OPT.	
	1	15159	CAP, RAIN, EXHAUST 1-7/8"	1
	2	57486	PIPE, EXHAUST 1-7/8 X 12	1
	3	11630	CLAMP, EXHAUST PIPE 2" HD	2
	4	15155	MUFFLER, CATALYTIC	1



100 Thomas Johnson Drive, Frederick, MD 21702-4600 USA
 Phone (301) 663-1600 • 1-800-638-3326
 Fax (301) 663-1607 • 1-800-447-3326
 Website: www.edcoinc.com • Email: sales@edcoinc.com

Printed in USA
 ©2004
 Page 27

ILLUSTRATION 15 : WIRING DIAGRAM



Note:
 All grounds designated with ⚡ (ground) symbol are all tied to one common point, a dedicated ground bolt on the console. The water pump is grounded to a water pump mounting bolt.

LIMITED EQUIPMENT WARRANTY

Equipment Development Company, Inc. herein referred to as EDCO warrants that each new unit manufactured by EDCO to be free from defects in material and workmanship in normal use and service for a period of (1) one year (except in the case of the cutter drum assembly on all model concrete asphalt planes, in which case the warranty period shall be 90 days) from date of shipment to the original buyer or equipment rental center owner.

EDCO will, at its option, repair or replace, at the EDCO factory or at a point designated by EDCO any part, which shall appear to the satisfaction of EDCO inspection to have been defective in material or workmanship.

This warranty, does not apply to failure occurring as a result of abuse, misuse, negligent repairs, corrosion, erosion, normal wear and tear, alterations or modifications made to the product without express written consent of EDCO: or failure to follow the recommended operating practices and maintenance procedures as provided in the products operating and maintenance manuals.

This warranty does not obligate EDCO to bear any transportation charges in connection with the replacement or repair of defective parts. This warranty does not obligate EDCO to bear any expense for travel time or of personnel in connection with any service calls.

Accessories or equipment furnished and installed on the product by EDCO but manufactured by others, including but not limited to engines, motors, electrical equipment, transmissions, etc., shall carry the accessory manufacturers' own warranty.

THIS WARRANTY IS IN LIEU OF ALL OTHER WARRANTIES, EXPRESSED OR IMPLIED, OR STATUTORY, INCLUDING ANY WARRANTIES OF MERCHANTABILITY OR OF FITNESS FOR A PARTICULAR PURPOSE.

LIABILITY LIMITATIONS

The remedies of the user set forth under provisions of warranty outlined above are the exclusive and total liability of EDCO with the respect to their sale or the equipment and service furnished hereunder, in connection with the performance or breach thereof, or from the sale, delivery, installation, repair or technical direction covered by or furnished under the sale, whether based on contract, warranty, negligence, indemnity, strict liability, or otherwise shall not exceed the purchase price of the unit of equipment upon which such liability is based.

EDCO will not in any event be liable to the user, any successors in interest or any beneficiary or assignee relating to this sale for any consequential, incidental, indirect, special or punitive damages arising out of this sale or any breach thereof, or any defects on, or failure of, or malfunction of the equipment under this sale based upon loss of use, lost profits or revenue, interest, lost goodwill, work stoppage, impairment of other goods, loss by reason of shutdown or non-operation, increased expenses of operation of the equipment, cost of purchase or replacement power of claims of users or customers of the user for service interruption whether or not such loss or damage is based on contract, warranty, negligence, indemnity, strict liability, or otherwise.

EDCO reserves the right to modify, alter and improve any part or parts without incurring any obligation to replace any part or parts previously sold without such modified, altered or improved part or parts.

No person is authorized to give any other warranty or to assume any additional obligation on EDCO's behalf unless made in writing and signed by an officer of EDCO.

Equipment Development Company, Inc.

USE ONLY GENUINE EDCO PARTS AND ACCESSORIES

For your own safety, the safety of others and the life of your machine

