

STARTING SERIAL # 2001

PARTS LIST MANUAL MODEL SS35-31D



**Concrete/Asphalt Saw
Part No. 34400**



100 Thomas Johnson Drive, Frederick, MD 21702-4600 USA
Phone (301) 663-1600 • 1-800-638-3326
Fax (301) 663-1607 • 1-800-447-3326
Website: www.edcoinc.com • Email: sales@edcoinc.com

Printed in USA
©2004

READ AND UNDERSTAND THE OPERATORS INSTRUCTION MANUAL THOROUGHLY BEFORE ATTEMPTING TO OPERATE THIS EQUIPMENT. Death or serious injury could occur if this machine is used improperly.



SAFETY MESSAGES



The safety instructions are preceded by a graphic alert message of DANGER, WARNING, or CAUTION.



Indicates an imminent hazard which, if not avoided, will result in death or serious injury.



Indicates an imminent hazard which, if not avoided, can result in death or serious injury.



Indicates hazards which, if not avoided, could result in serious injury and or damage to the equipment.

GASOLINE

Powered Equipment



- Do not operate gasoline powered equipment without adequate ventilation. Carbon monoxide is an invisible, odorless gas that can kill.

ELECTRICAL

Powered Equipment



- ELECTRICAL HAZARD** - Be sure equipment is properly grounded. Failure to comply could kill or result in serious injury.



The engine exhaust from this product contains chemicals known to the State of California to cause cancer, birth defects or other reproductive harm.

GENERAL INSTRUCTIONS



- You must read and understand the operators instruction manual and all other manuals associated with this machine. For your safety and the safety of others around you, it is extremely important to fully understand how to operate this machine in the way it was intended. Different model machines or older/newer versions of the same model may have different parts and controls that you need to understand. If instructions are not readable or available DO NOT USE this machine and contact the factory for a replacement Manual.
- You must be able to physically handle the bulk weight and power of this machine. If not properly controlled this machine can cause death or serious injury.
- Do not operate this machine in an impaired mental state. You must be able to exercise good judgement and reactions to maintain a safe working environment.
- This is a "one person" machine which means only one operator can be operating the machine at any one time. For the safety of others, maintain a safe operating distance to other personnel. Your work area should be defined and appropriately marked so bystanders and coworkers do not stand or walk near this machine and end up seriously injured by flying debris or exposing them to harmful noise or dust.
- This equipment is for Commercial use. Although this is a "one person" machine your work team should understand how to shut this machine off and quickly get medical help if an accident strikes the operator.
- Keep all guards in place during operation. The guards are to provide protection from inadvertent contact with dangerous moving parts, pinch points, or hot surfaces.
- Wear appropriate Personal Protective Equipment (PPE) including safety glasses, safety boots, work gloves, respiratory protection, hearing protection, and head protection. Do not wear loose clothing that can get tangled in moving parts. Failure to do so could result in dismemberment or death. **Wear an approved respirator when removing hazardous materials or when grinding/cutting dry materials. Some dust particles such as concrete dust can contain silicate particles which can cause silicosis (a very serious lung disease). Contact NIOSH or OSHA for further details. When wet grinding/cutting, avoid contact with the concrete/asphalt slurry which can cause serious skin irritations.**
- You must maintain this machine per the maintenance schedule in the operator manual. Remember before adjusting, servicing, or fueling this machine, disconnect the source of power to the machine by disconnecting the spark plug (Gas models), or by unplugging the electrical power cord (electric models) or air hose (Pneumatic models) AT THE MACHINE so you can assure yourself it remains unplugged while you are working on it. Do not modify this machine. Use only genuine EDCO parts and accessories. Repairs and service should be performed by approved EDCO dealers or authorized technicians.
- You should look carefully around the area before you begin work so you can identify potential hazards such as deck inserts, pipes, columns, openings, electrical cords or outlets, or any other objects protruding from the slab surface.
- This machine has no brain so you must use your own. There is no substitute for safety. The safety decals on the machine are to serve as a reminder for information you must already know before you begin using this machine. Take a moment to reread the safety decals each time you use the machine. If your machine is missing any decals, contact the factory for a replacement (EDCO 1-800-638-3326).

PARTS LIST MANUAL

EDCO MODEL SS35-31D

| Section | Page Number |
|---|-------------|
| Safety Messages / General Instructions | 2 |
| How To Order Replacement Parts | 3 |
| Illustration 1: Frame Assembly | 4,5 |
| Illustration 2: Lifting Assembly | 6,7 |
| Illustration 3: Water Pump & Blade Guard Assembly | 8,9 |
| Illustration 4: Guide Bar Assembly | 10 |
| Illustration 5: Blade Depth Gauge Assembly | 11 |
| Illustration 6: Arbor Assembly | 12 |
| Illustration 7: Throttle Grouping | 13 |
| Illustration 8: Transmission Assembly | 14,15 |
| Illustration 9: Clutch & Rear Axle Assembly | 16,17 |
| Illustration 10: Engine Grouping | 18,19 |
| Illustration 11: Engine Mount Grouping | 20,21 |
| Illustration 12: Belt Drive Grouping | 22,23 |
| Illustration 13: Instrument Panel Grouping | 24,25 |
| Illustration 14: Exhaust Grouping | 26 |
| Illustration 15: Wiring Diagram | 27 |
| Limited Equipment Warranty | back cover |

HOW TO ORDER REPLACEMENT PARTS

- To insure product safety and reliability, always use genuine EDCO replacement parts when making repairs to the equipment.
- When calling for parts, specify the MODEL and SERIAL NUMBER of the machine which can be found on the NAME PLATE. Keep that information in the space provided. In addition to this information, give part number, description and quantity as listed on the parts list to your parts representative.
- Please note: Due to improvements and changes in the equipment, the illustrations shown may be different than the actual machine.

FILL IN INFORMATION BELOW

Date of Purchase _____
 Name of Machine _____
 Model # _____
 Serial # _____
 Belt Size(s) _____

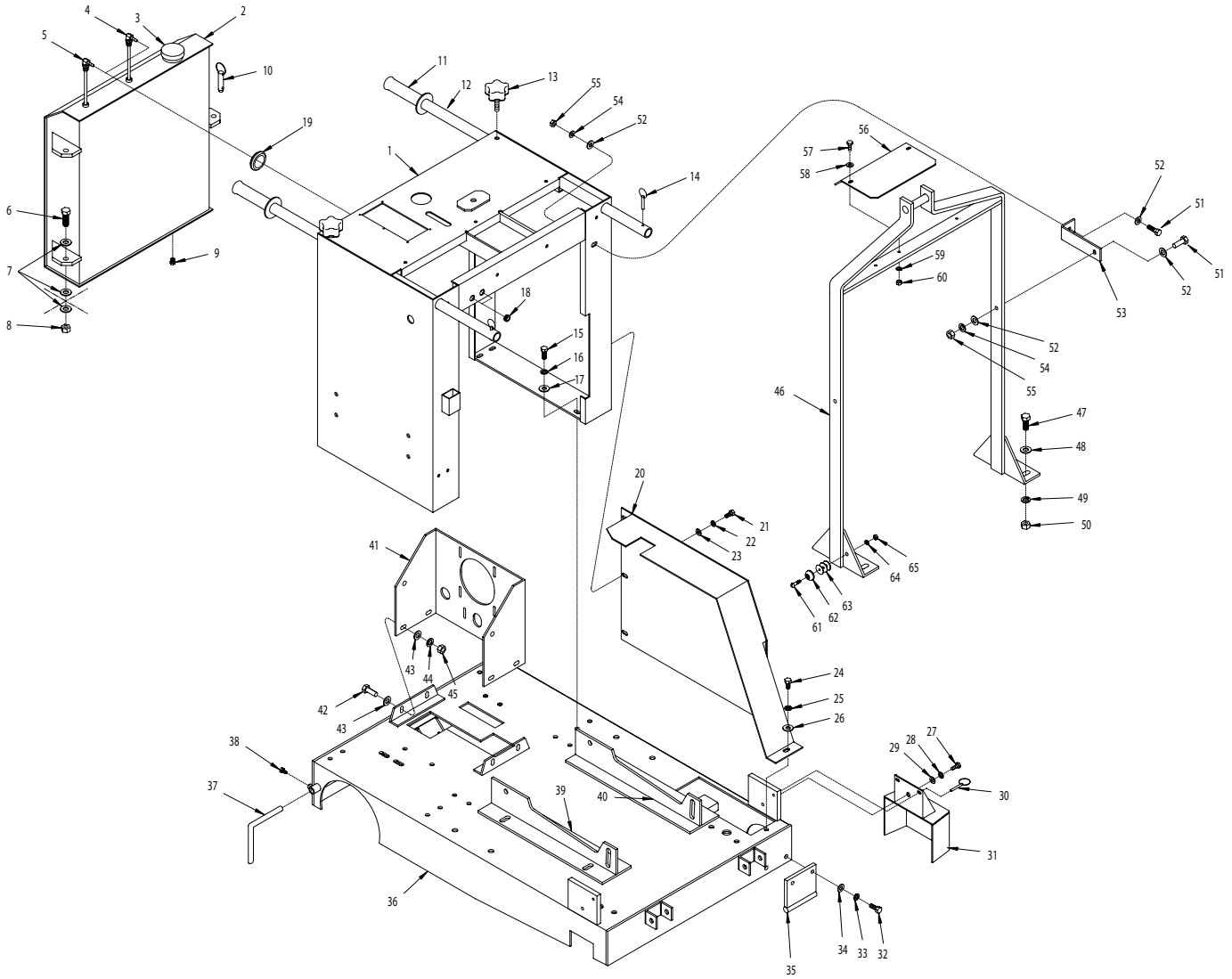
Toll Free: 1-800-638-3326
 FAX: 1-800-447-3326
 email: sales@edcoinc.com
www.edcoinc.com



100 Thomas Johnson Drive, Frederick, MD 21702-4600 USA
 Phone (301) 663-1600 • 1-800-638-3326
 Fax (301) 663-1607 • 1-800-447-3326
 Website: www.edcoinc.com • Email: sales@edcoinc.com

Printed in USA
 ©2004

ILLUSTRATION 1 : FRAME ASSEMBLY

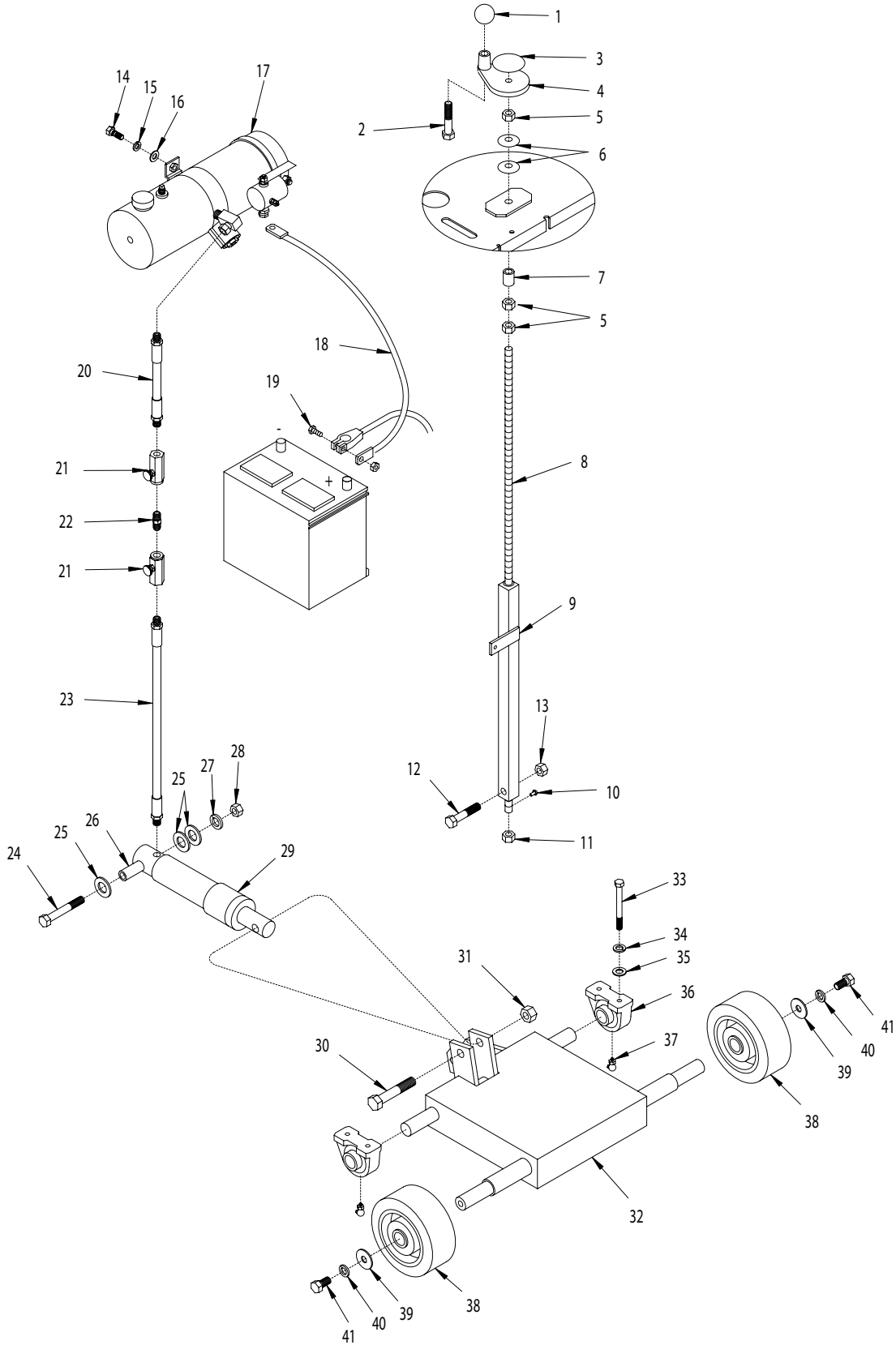


PARTS LISTING - ILLUSTRATION 1 : FRAME ASSEMBLY

| ITEM# | PART# | DESCRIPTION | QTY. | ITEM# | PART# | DESCRIPTION | QTY. |
|-------|-------|------------------------------------|------|-------|----------|---|------|
| 1 | 50650 | CONSOLE | 1 | 35 | 50703 | GUARD, LOWER PULLEY | 1 |
| 2 | 50504 | TANK, FUEL 5 GAL. | 1 | 36 | 50701 | MAIN FRAME | 1 |
| 3 | 61056 | CAP, FUEL TANK | 1 | 37 | 51011 | GUIDE POINTER, REAR | 1 |
| 4 | 50705 | TUBE, FUEL RETURN 11" | 1 | 38 | 10834 | SCREW, CAP 1/4-20x1/2 | 2 |
| 5 | 50309 | TUBE, FUEL PICK-UP 19-3/4" | 1 | 39 | 50706 | BRACKET, RIGHT ENGINE MOUNT (REFER TO ILLUS. 11) | 1 |
| 6 | 10308 | SCREW, CAP 1/2-20x1-1/2 | 2 | 40 | 50707 | BRACKET, LEFT ENGINE MOUNT (REFER TO ILLUS. 11) | 1 |
| 7 | 10312 | WASHER, FLAT 1/2 | 6 | 41 | 50508 | MOUNT, TRANSMISSION | 1 |
| 8 | 10205 | NUT, LOCK 1/2-20 | 2 | 42 | 10021 | SCREW, CAP 3/8-24x1 | 4 |
| 9 | 11650 | PIPE PLUG 1/8 NPT (BRASS) | 1 | 43 | 10025 | WASHER, FLAT 3/8 | 8 |
| 10 | 10125 | PIN, DETENT RING 1/2x1-1/2 E.L. | 1 | 44 | 10811 | WASHER, LOCK 3/8 | 4 |
| 11 | 61108 | GRIP, HAND 1" MODEL SX | 2 | 45 | 10014 | NUT 3/8-24 | 4 |
| 12 | 50522 | HANDLE BAR 36" | 2 | 46 | 50606 | BAIL, LIFTING | 1 |
| 13 | 51230 | KNOB, STAR CLAMPING 3/8-16x1" STUD | 2 | 47 | 10321 | SCREW, CAP 1/2-20x1-1/4 | 4 |
| 14 | 10145 | PIN, DETENT RING 3/16x1-5/16 E.L. | 2 | 48 | 10312 | WASHER, FLAT 1/2 | 4 |
| 15 | 10055 | SCREW, CAP 3/8-16x1 | 8 | 49 | 10045 | WASHER, LOCK 1/2 | 4 |
| 16 | 10811 | WASHER, LOCK 3/8 | 8 | 50 | 10072 | NUT 1/2-20 | 4 |
| 17 | 10025 | WASHER, FLAT 3/8 | 8 | 51 | 10806 | SCREW, CAP 5/16-18x1 | 2 |
| 18 | 57148 | GROMMET 3/8IDx1/8GRV.x5/8GD | 2 | 52 | 10213 | WASHER, FLAT 5/16 | 4 |
| 19 | 51253 | GROMMET 1-45/64ID X 1/8GRV. X 2GD | 1 | 53 | 50711 | BRACE, LIFTING BAIL | 1 |
| 20 | 50702 | COVER, BELT | 1 | 54 | 10801 | WASHER, LOCK 5/16 | 2 |
| 21 | 10053 | SCREW, CAP 5/16-18x3/4 | 3 | 55 | 10054 | NUT 5/16-18 | 2 |
| 22 | 10801 | WASHER, LOCK 5/16 | 3 | 56 | 50712 | GUARD, SPLASH | 1 |
| 23 | 10213 | WASHER, FLAT 5/16 | 3 | 57 | 10806 | SCREW, CAP 5/16-18 X 1 | 2 |
| 24 | 10907 | SCREW, CAP 3/8-16x3/4 | 1 | 58 | 10213 | WASHER, FLAT 5/16 | 2 |
| 25 | 10811 | WASHER, LOCK 3/8 | 1 | 59 | 10801 | WASHER, LOCK 5/16 | 2 |
| 26 | 10025 | WASHER, FLAT 3/8 | 1 | 60 | 10054 | NUT 5/16-18 | 2 |
| 27 | 10907 | SCREW, CAP 3/8-16x3/4 | 1 | 61 | 10834 | SCREW, MACHINE 10-32 X 1 | 1 |
| 28 | 10811 | WASHER, LOCK 3/8 | 1 | 62 | 52022 | BUMPER, RUBBER 10D X 3/16ID X 7/16H | 1 |
| 29 | 10025 | WASHER, FLAT 3/8 | 1 | 63 | 40378-S1 | WASHER, FENDER 1/4ID X 1-1/4OD S.S. | 3 |
| 30 | 49016 | PIN, DETENT RING 1/4x1 E.L. | 1 | 64 | 10831 | WASHER, LOCK, INT. TOOTH #10 | 1 |
| 31 | 50704 | COVER, ARBOR | 1 | 65 | 10832 | NUT 10-32 | 1 |
| 32 | 10055 | SCREW, CAP 3/8-16x1 | 2 | | | | |
| 33 | 10811 | WASHER, LOCK 3/8 | 2 | | | | |
| 34 | 10025 | WASHER, FLAT 3/8 | 2 | | | | |



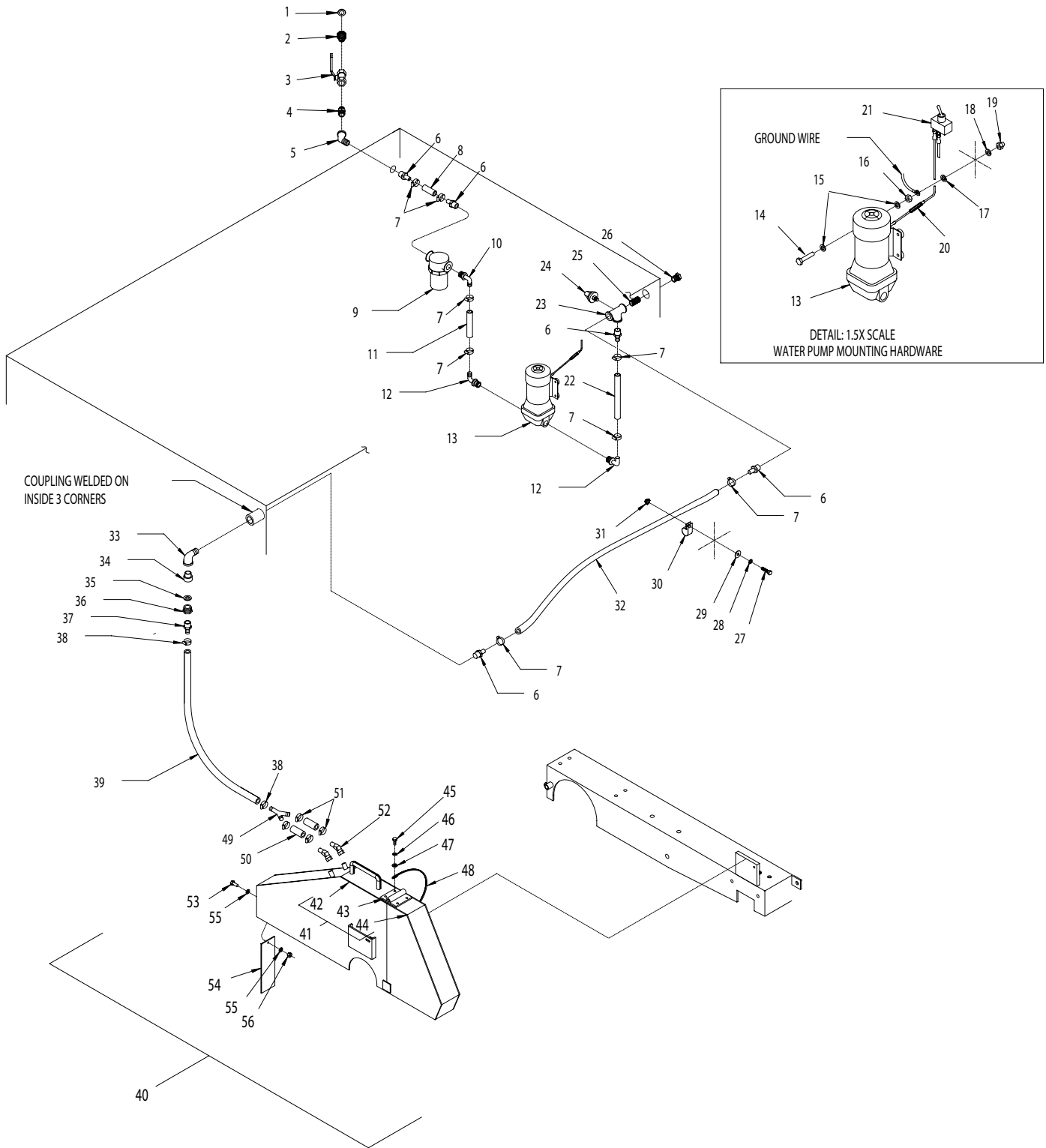
ILLUSTRATION 2 : LIFTING ASSEMBLY



| PARTS LISTING - ILLUSTRATION 2 : LIFTING ASSEMBLY | | | |
|---|--------|--|------|
| ITEM# | PART# | DESCRIPTION | QTY. |
| 1 | 14023 | KNOB, BALL 1-3/8 w/ 1/2-13 THD., BLACK | 1 |
| 2 | 10323 | SCREW, CAP 1/2-13x2-1/2 | 1 |
| 3 | 80007 | DECAL, CUT CONTROL - DN/UP (SMALL) | 1 |
| 4 | 57016 | HANDWHEEL, SMALL w/ 1/2-13 THD. | 1 |
| 5 | 10417 | NUT 1/2-13 | 3 |
| 6 | 10426 | WASHER, BELLEVILLE 1/2IDx3/64THK | 2 |
| 7 | 50526 | SPACER, STEEL 1/2"IDx1"LG | 1 |
| 8 | 50409 | ROD, ALLTHREAD LINKAGE 1/2-13x22" | 1 |
| 9 | 50412 | LINKAGE LOWER TUBE | 1 |
| 10 | 10127 | SCREW, DRIVE 1/8x1/4"L | 1 |
| 11 | 50455 | NUT 1/2-13, SPECIAL | 1 |
| 12 | 10343 | SCREW, CAP 1/2-20x2-1/2 | 1 |
| 13 | 10205 | NUT, LOCK 1/2-20 | 1 |
| 14 | 10055 | SCREW, CAP 3/8-16x1 | 2 |
| 15 | 10811 | WASHER, LOCK 3/8 | 2 |
| 16 | 10025 | WASHER, FLAT 3/8 | 2 |
| 17 | 50620 | PUMP, HYDRAULIC ELECTRIC, 12VDC M-319 | 1 |
| 18 | 50117R | CABLE, EYE-EYE 4GA.x24" (RED) | 1 |
| 19 | 10342 | SCREW, CAP 5/16-18x1-1/2 | 1 |
| 20 | 57078 | HOSE, HYDRAULIC 1/4 NPTx6-1/2" LOA. | 1 |
| 21 | 61116 | VALVE, FLOW CONTROL | 2 |
| 22 | 10717 | NIPPLE, HEX 1/4 NPT (BRASS) | 1 |
| 23 | 50527 | HOSE, HYDRAULIC 1/4 NPTx15-1/2" LOA. | 1 |
| 24 | 10324 | SCREW, CAP 1/2-13x3-1/2 | 1 |
| 25 | 10009 | WASHER, FLAT 3/4 | 3 |
| 26 | 61021 | SPACER, CYL. REAR 1/2"ID X 2-1/4 | 1 |
| 27 | 10045 | WASHER, LOCK 1/2 | 1 |
| 28 | 10417 | NUT 1/2-13 | 1 |
| 29 | 61020 | CYLINDER, HYDRAULIC | 1 |
| 30 | 10326 | SCREW, CAP 5/8-11x3 | 1 |
| 31 | 10809 | NUT, LOCK 5/8-11 | 1 |
| 32 | 50502 | FORK | 1 |
| 33 | 10868 | SCREW, CAP 3/8-16x3-1/2 | 4 |
| 34 | 10811 | WASHER, LOCK 3/8 | 4 |
| 35 | 10025 | WASHER, FLAT 3/8 | 4 |
| 36 | 50222 | BEARING, BALL 1" TPB | 2 |
| 37 | 10961 | FITTING, GREASE 1/4-28 X 90D | 2 |
| 38 | 50439 | WHEEL 6x2-1/2x1"BRG., RED POLY | 2 |
| 39 | 10433 | WASHER, BELLEVILLE 1/2IDx3/32THK | 2 |
| 40 | 10045 | WASHER, LOCK 1/2 | 2 |
| 41 | 10914 | SCREW, CAP 1/2-13x1 | 2 |



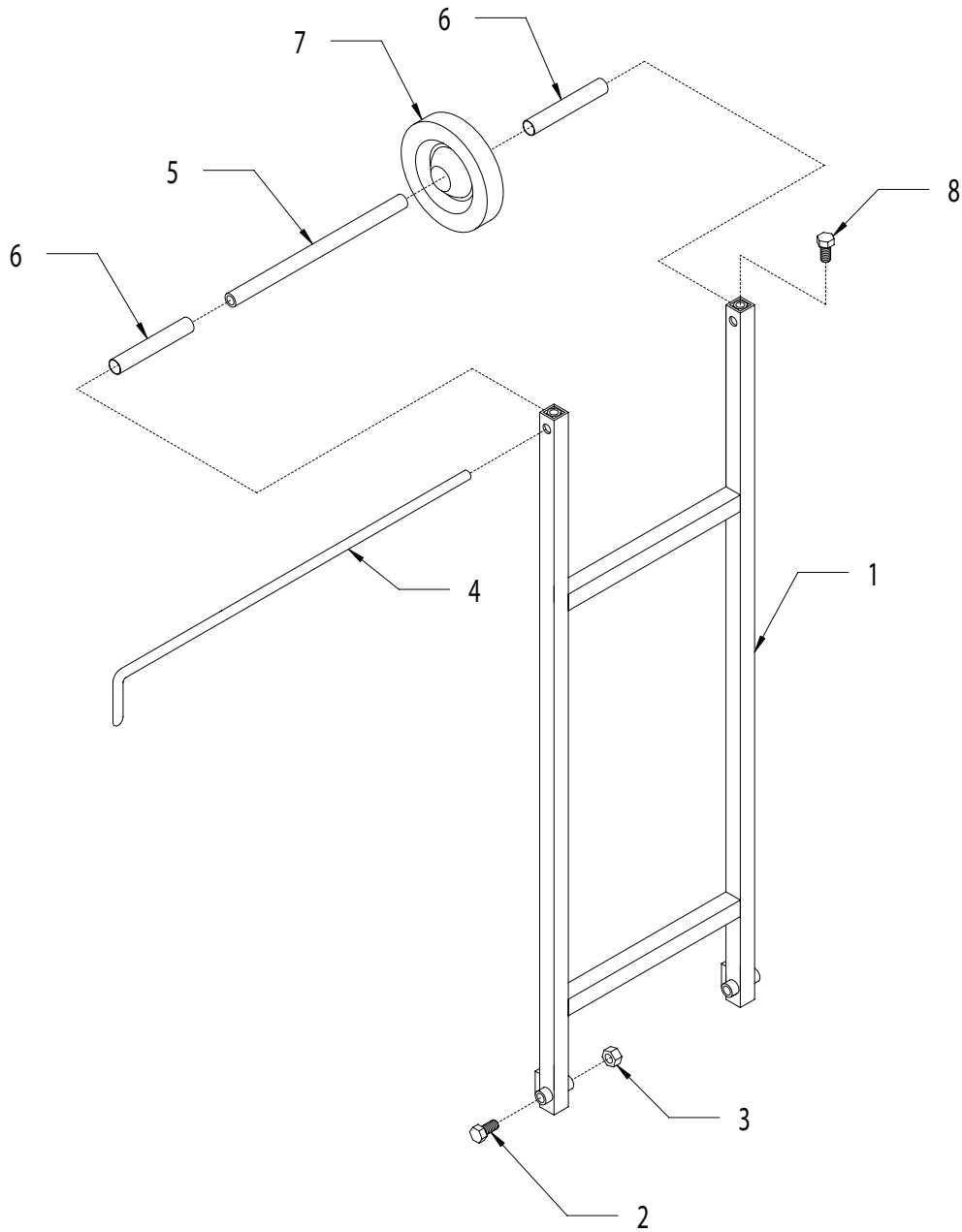
ILLUSTRATION 3 : WATER PUMP & BLADE GUARD ASSEMBLY



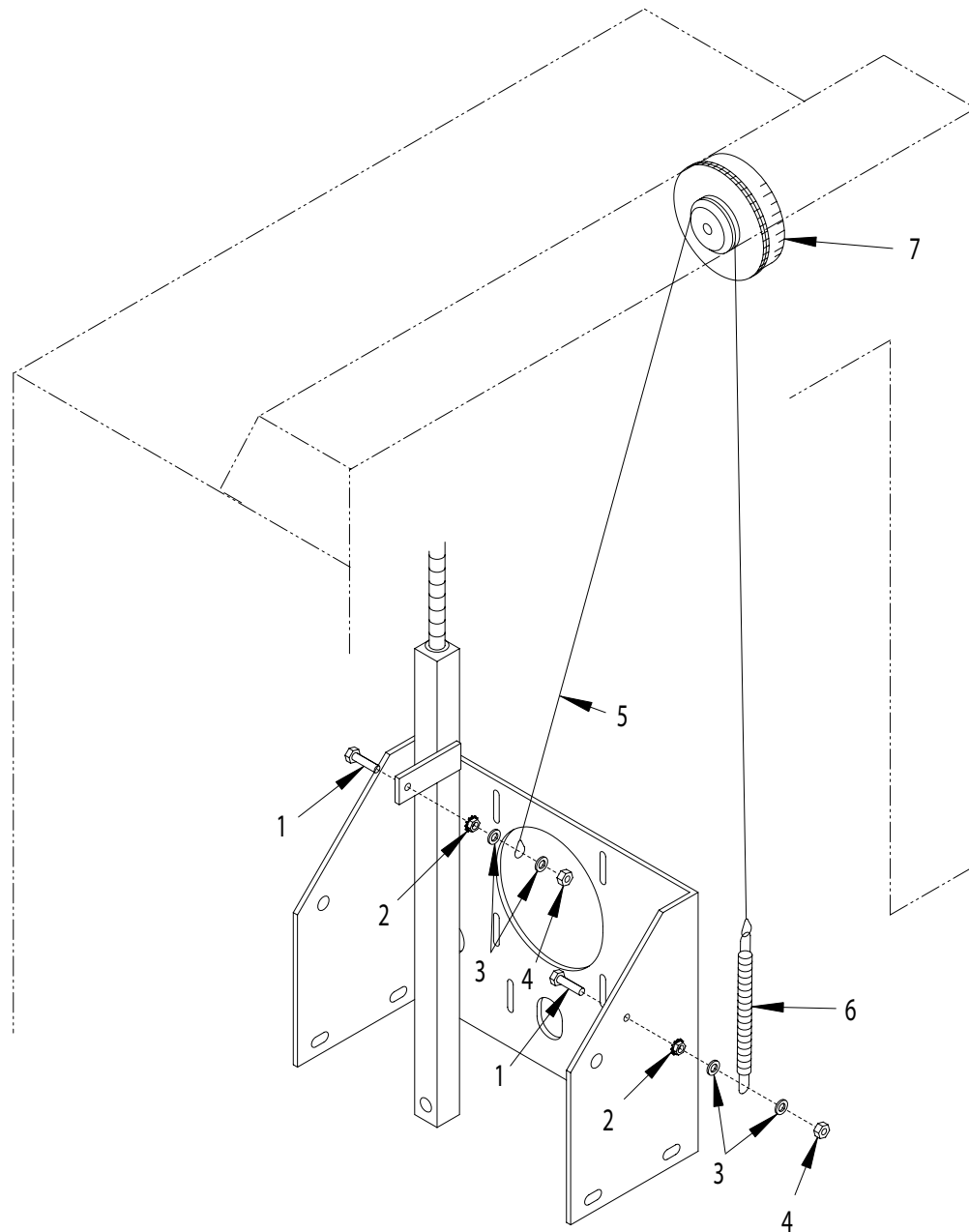
| PARTS LISTING - ILLUSTRATION 3 : WATER PUMP & BLADE GUARD ASSEMBLY | | | | | | | |
|--|-------|--|------|-------|--------|--|------|
| ITEM# | PART# | DESCRIPTION | QTY. | ITEM# | PART# | DESCRIPTION | QTY. |
| 1 | 10070 | WASHER, HOSE 3/4 | 1 | 35 | 10070 | WASHER, HOSE 3/4 | 1 |
| 2 | 80021 | CONN., SWIVEL FEM. 3/4 HOSEx 1/2 MPT (INCLUDES ITEM #1) | 1 | 36 | 10780 | CONNECTOR, MALE 3/4Hx1/2 FPT | 1 |
| 3 | 10711 | VALVE, BALL 1/2 FPT | 1 | 37 | 80061 | BARB, PUSH-ON 1/2 HOSEx1/2 MPT | 1 |
| 4 | 10679 | NIPPLE, HEX 1/2 NPT (BRASS) | 1 | 38 | 50069 | CLAMP, HOSE, SAE #6, ADJ. TO 13/16 | 2 |
| 5 | 10734 | ELBOW, STREET 1/2NPT X 45 (BLACK) | 1 | 39 | | HOSE 1/2"ID (DIFFERENT LENGTHS) | 1 |
| 6 | 10680 | BARB, 1/2 HOSEx1/2 MPT (PLASTIC) | 5 | | 57183 | 24"L FOR 24-26" GUARD | |
| 7 | 50069 | CLAMP, HOSE, SAE #6, ADJ. TO 13/16 | 8 | | 57140 | 26"L FOR 18-20" GUARD | |
| 8 | 50532 | HOSE, WATER 1/2" IDx2"L | 1 | | 57140 | 26"L FOR 14-16" GUARD | |
| 9 | 57170 | STRAINER, NYLON T-STYLE 1/2 FPT | 1 | 40 | | GUARD ASSEMBLY, BLADE (ITEMS 42-56) | 1 |
| 10 | 50471 | BARB ELBOW 90, 1/2 HOSEx1/2 MPT | 1 | | 57449A | 24-26" BLADE | |
| 11 | 57168 | HOSE, WATER 1/2"IDx4-7/8" L | 1 | | 57450A | 18-20" BLADE | |
| 12 | 50469 | PUMP QUAD PORT BARB ELBOW 1/2" (COMES w/ PUMP) | 2 | | 57451A | 14-16" BLADE | |
| 13 | 50470 | PUMP, WATER, 12VDC, FLOJET QUAD | 1 | 41 | | GUARD ONLY, COMPLETE (ITEMS 42-47) | 1 |
| 14 | 10905 | SCREW, CAP 1/4-20x1-1/4 | 4 | | 57449 | 24-26" BLADE | |
| 15 | 10602 | WASHER, FLAT 1/4 | 8 | | 57450 | 18-20" BLADE | |
| 16 | 10015 | NUT, LOCK 1/4-20 | 4 | | 57451 | 14-16" BLADE | |
| 17 | 10451 | WASHER, LOCK, INT. TOOTH 1/4" (USED ON GROUND ONLY) | 1 | 42 | | GUARD, BLADE, REAR ONLY | 1 |
| 18 | 10038 | WASHER, LOCK 1/4 | 4 | | 57449R | 24-26" BLADE | |
| 19 | 10876 | NUT, ACORN 1/4-20 | 4 | | 57450R | 18-20" BLADE | |
| 20 | 50447 | FUSE & HOLDER, 10AMP | 1 | | 57451R | 14-16" BLADE | |
| 21 | 10633 | SWITCH, TOGGLE SPST (SEE ILLUS. 13, ITEM 3) | 1 | 43 | 11617 | HINGE, BUTT 3 X 3 X 7GA. S.S. | 1 |
| 22 | 57176 | HOSE, WATER 1/2"IDx7-1/4"L | 1 | 44 | | GUARD, BLADE, FRONT ONLY | 1 |
| 23 | 50525 | PIPE TEE, WATER PRESSURE SWITCH 1/2 NPT | 1 | | 57449F | 24-26" BLADE | |
| 24 | 50215 | SWITCH, PRESSURE, COIL IGN., N.O. | 1 | | 57450F | 18-20" BLADE | |
| 25 | 10728 | PIPE NIPPLE, CLOSE 1/2 NPT (BLACK) | 1 | | 57451F | 14-16" BLADE | |
| 26 | 50552 | PIPE PLUG 1/2 NPT (BRASS) | 1 | 45 | 10834 | SCREW, CAP 1/4-20x1/2 | 4 |
| 27 | 10031 | SCREW, CAP 1/4-20x1 | 1 | 46 | 10038 | WASHER, LOCK 1/4 | 4 |
| 28 | 10038 | WASHER, LOCK 1/4 | 1 | 47 | 10602 | WASHER, FLAT 1/4 (USED ON PIN & CABLE ASSY. ONLY) | 1 |
| 29 | 10602 | WASHER, FLAT 1/4 | 1 | 48 | | PIN & CABLE ASSY., BLADE GUARD | 1 |
| 30 | 11565 | CLAMP, LOOM, 5/8 (SAE SIZE 10) | 1 | | 57483 | 24-26" BLADE | |
| 31 | 10861 | NUT, KEPS 1/4-20 | 1 | | 57484 | 18-20" BLADE | |
| 32 | 50655 | HOSE, WATER 1/2"IDx20"L | 1 | | 57485 | 14-16" BLADE | |
| 33 | 10724 | ELBOW, STREET 1/2 NPTx90 (BLACK) | 1 | 49 | 10682 | BARBED FITTING, "Y" 1/2" HOSE | 1 |
| 34 | 80021 | CONN., SWIVEL FEM. 3/4HOSE x1/2 MPT (INCLUDES ITEM #35) | 1 | 50 | 50532 | HOSE, WATER 1/2"IDx2"L | 2 |
| | | | | 51 | 50069 | CLAMP, HOSE, SAE #6, ADJ. TO 13/16 | 4 |
| | | | | 52 | 10710 | FITTING, SWIVEL 45, 1/4 NPT HYD. | 2 |
| | | | | 53 | 10018 | SCREW, CAP 1/4-20x3/4 | 1 |
| | | | | 54 | 41115 | FLAP, SPLASH 2-1/2x8 | 1 |
| | | | | 55 | 10602 | WASHER, FLAT 1/4 | 2 |
| | | | | 56 | 10015 | NUT, LOCK 1/4-20 | 1 |



ILLUSTRATION 4 : GUIDE BAR ASSEMBLY



| ITEM# | PART# | DESCRIPTION | QTY. |
|-------|-------|------------------------------------|------|
| 1 | 57119 | GUIDE BAR | 1 |
| 2 | 10202 | SCREW, CAP 1/2-20x3 | 2 |
| 3 | 10205 | NUT, LOCK 1/2-20 | 2 |
| 4 | 50514 | POINTER, FRONT 24-1/2" | 1 |
| 5 | 57120 | AXLE TUBE, GUIDE WHEEL | 1 |
| 6 | 57171 | SPACER TUBE 5-1/8, GUIDE BAR WHEEL | 2 |
| 7 | 50536 | WHEEL 5x1-1/2x3/4" BORE | 1 |
| 8 | 10304 | SCREW, CAP 1/2-20x1 | 2 |

ILLUSTRATION 5 : BLADE DEPTH GAUGE ASSEMBLY


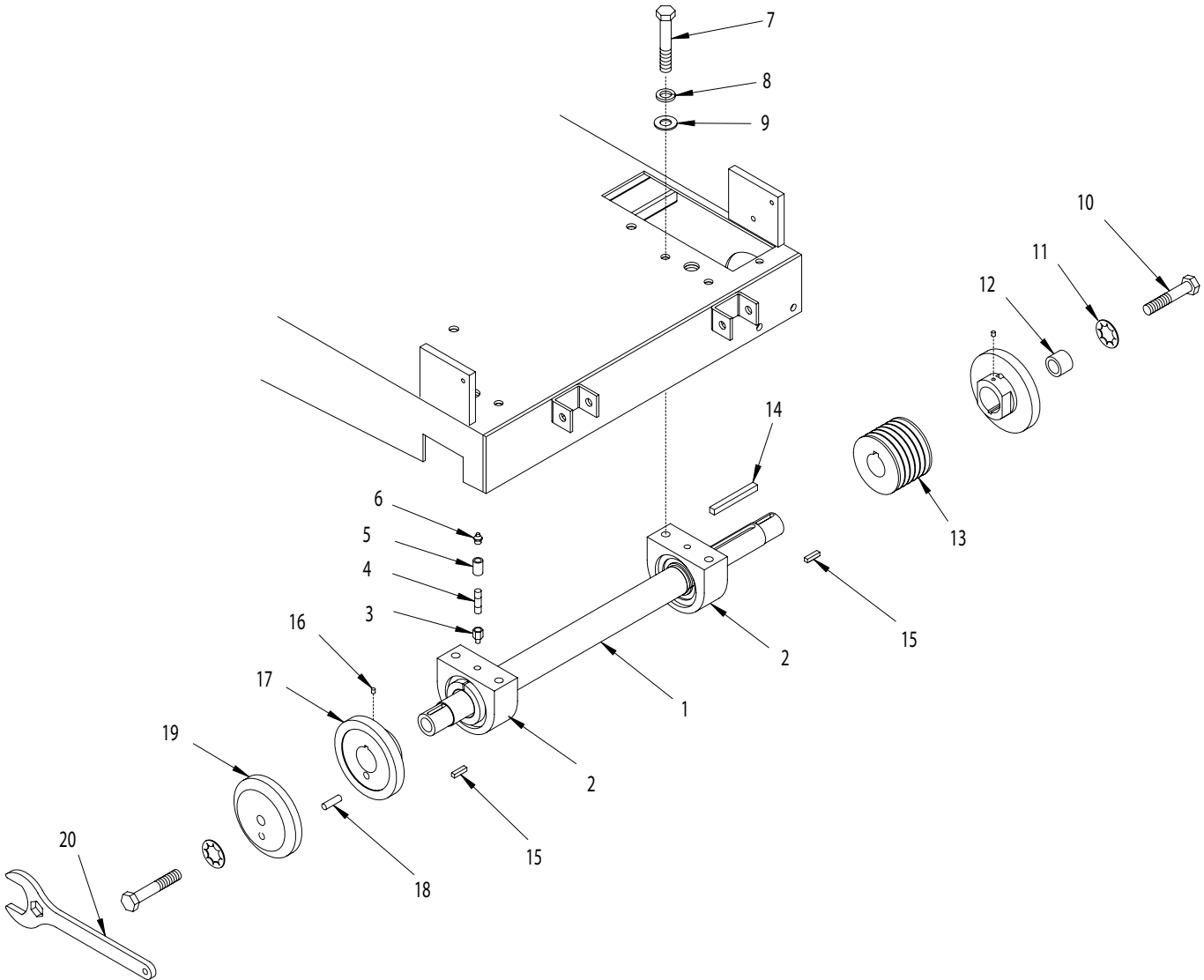
| ITEM # | PART # | DESCRIPTION | QTY. |
|--------|--------|--|------|
| 1 | 10031 | SCREW, CAP 1/4-20x1 | 2 |
| 2 | 10861 | NUT, KEPS 1/4-20 | 2 |
| 3 | 10602 | WASHER, FLAT 1/4 | 4 |
| 4 | 10150 | NUT, HEX NYLON LOCK 1/4-20 | 2 |
| 5 | 57143 | CABLE, DEPTH GAUGE 3/32 x34"L | 1 |
| 6 | 3636 | SPRING, EXT. 6"L ("A" ADAPTER) | 1 |
| 7 | 57132 | WHEEL, DEPTH GAUGE (SEE ILLUS. 13, ITEMS 24-30) | 1 |



100 Thomas Johnson Drive, Frederick, MD 21702-4600 USA
 Phone (301) 663-1600 • 1-800-638-3326
 Fax (301) 663-1607 • 1-800-447-3326
 Website: www.edcoinc.com • Email: sales@edcoinc.com

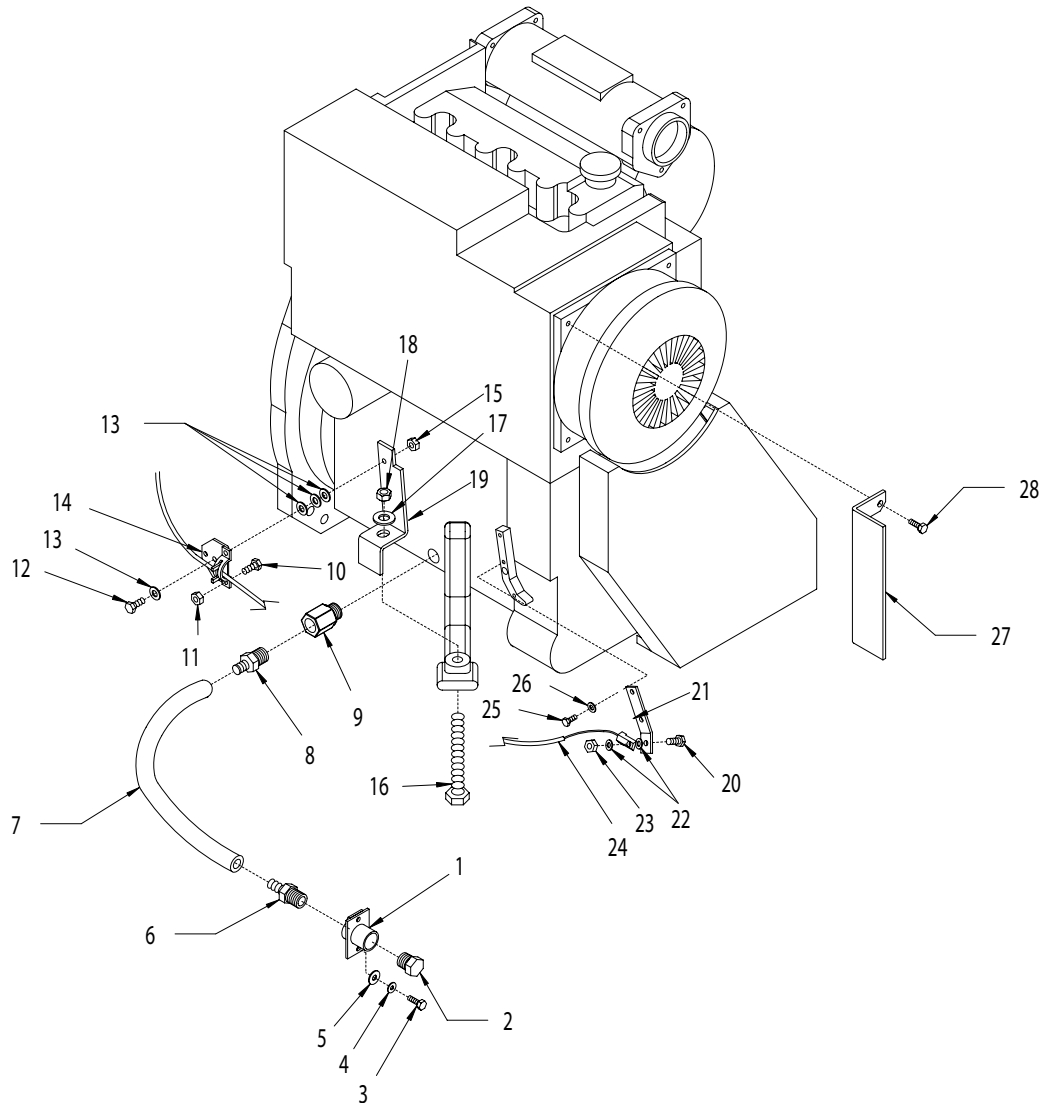
Printed in USA
 ©2004

ILLUSTRATION 6 : ARBOR ASSEMBLY



| ITEM# | PART# | DESCRIPTION | QTY. | ITEM# | PART# | DESCRIPTION | QTY. |
|-------|-------|--------------------------------------|------|-------|-------------------------|-------------------------------------|------|
| 1 | 50720 | ARBOR SHAFT 28-1/8"L | 1 | 12 | 10096 | COLLAR, LOCKING 5/8"ID | 1 |
| 2 | 50460 | BEARING, BALL 1-1/2" TPB W/SKWEZLOC | 2 | 13 | 10511 | SHEAVE 3.65"ODx6GR.3Vx1-7/16"B | 1 |
| 3 | 50541 | ADAPTER, GREASE FIT. 1/8FPT X 1/4-28 | 2 | 10512 | 4.80"ODx6GR.3Vx1-7/16"B | | |
| 4 | 10798 | PIPE NIPPLE 1/8NPTx1-1/2 (BLACK) | 2 | 14 | 10074 | KEY 3/8SQ X 3-1/2 | 1 |
| 5 | 10698 | PIPE COUPLING 1/8 NPT (GALV.) | 2 | 15 | 10174 | KEY 1/4SQ X 1 | 2 |
| 6 | 10006 | FITTING, GREASE 1/8NPTx45D | 2 | 16 | 10161 | SCREW, SET 1/4-28x5/16 | 2 |
| 7 | 10499 | SCREW, CAP 1/2-13x3 | 4 | 17 | 50721 | ARBOR BACKING PLATE 5" | 2 |
| 8 | 10045 | WASHER, LOCK 1/2 | 4 | 18 | 50722 | PIN, SHEAR PROOF 3/8x1-1/2 | 1 |
| 9 | 10312 | WASHER, FLAT 1/2 | 4 | 19 | 57403 | ARBOR BLADE CAP 5" | 1 |
| 10 | 10359 | SCREW, CAP 5/8-11x3-1/4 | 2 | 20 | 57406 | WRENCH, ARBOR COMBINATION 2 & 15/16 | 2 |
| 11 | 10457 | WASHER, LOCK, INT. TOOTH 5/8" | 2 | | | | |



ILLUSTRATION 7 : THROTTLE GROUPING

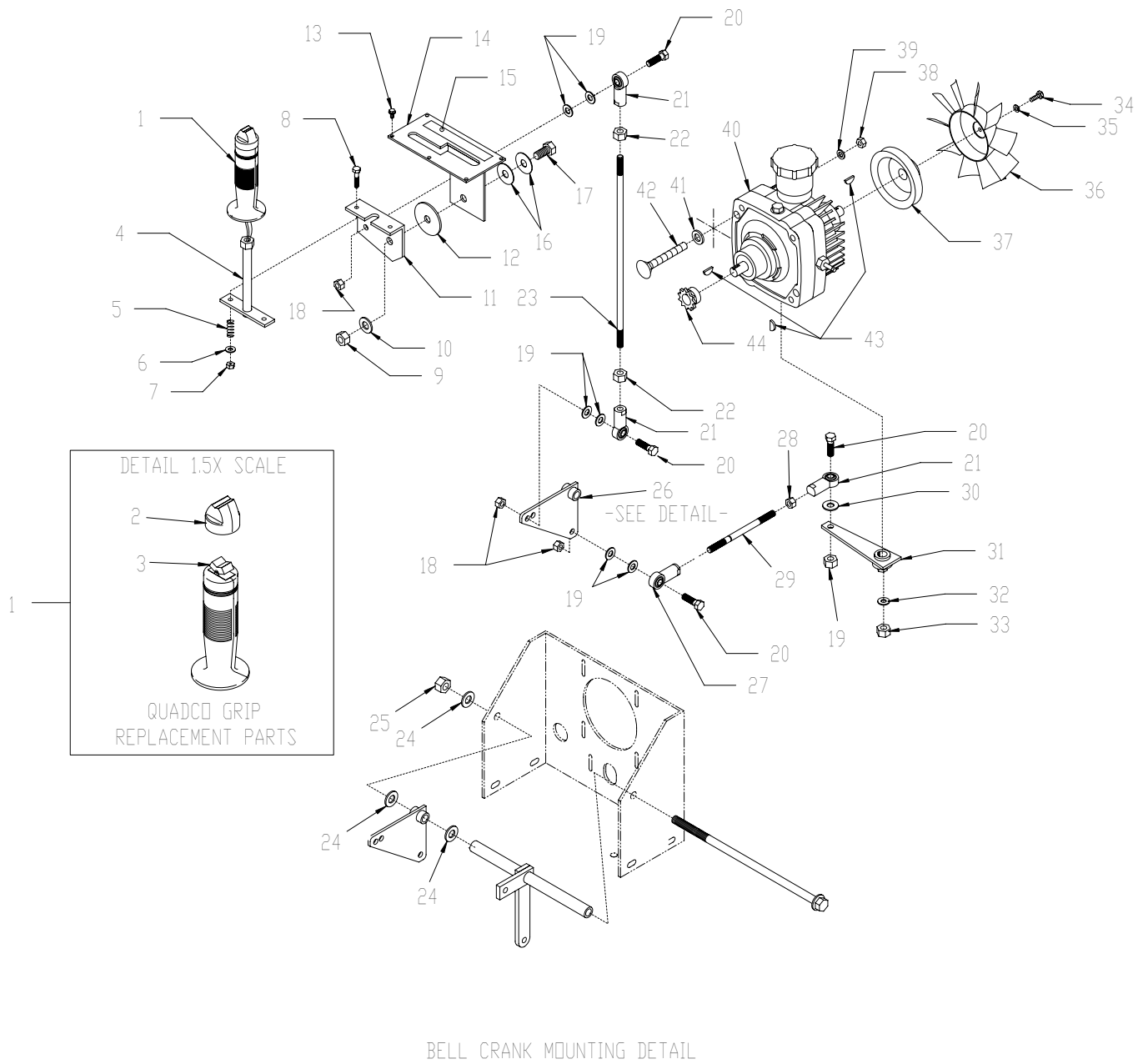
| ITEM# | PART# | DESCRIPTION | QTY. | ITEM# | PART# | DESCRIPTION | QTY. |
|-------|-------|--|------|-------|-------|--|------|
| 1 | 50604 | BRACKET, OIL DRAIN | 1 | 16 | 10376 | SCREW, CAP 1/2-13x5 | 1 |
| 2 | 50552 | PIPE PLUG 1/2 NPT (BRASS) | 1 | 17 | 10312 | WASHER, FLAT 1/2 | 1 |
| 3 | 10018 | SCREW, CAP 1/4-20x3/4 | 2 | 18 | 10155 | NUT, HEX NYLON LOCK 1/2-13 | 1 |
| 4 | 10038 | WASHER, LOCK 1/4 | 2 | 19 | 57433 | BRACKET, THROTTLE CABLE | 1 |
| 5 | 10602 | WASHER, FLAT 1/4 | 2 | 20 | 10018 | SCREW, CAP 1/4-20x3/4 | 1 |
| 6 | 80061 | BARB, PUSH-ON 1/2 HOSEx1/2 MPT | 1 | 21 | 57434 | ARM, THROTTLE CABLE | 1 |
| 7 | 50713 | HOSE, PUSH-ON 1/2" IDx14-1/2"L (BLACK) | 1 | 22 | 10602 | WASHER, FLAT 1/4 | 2 |
| 8 | 50554 | BARB, PUSH-ON 1/2 HOSEx3/8 MPT | 1 | 23 | 10015 | NUT, LOCK 1/4-20 | 1 |
| 9 | 57443 | ADAPTER, METRIC 18mmx1.5x3/8 FPT | 1 | 24 | 50560 | CABLE, VERNIERADJ. LOCKING CONTROL (THROTTLE CABLE, SEE ILLUS. 13, ITEM #16) | 1 |
| 10 | 10834 | SCREW, CAP 1/4-20x1/2 | 2 | 25 | 11634 | SCREW, CAP M6x1.0Px20MM | 2 |
| 11 | 10015 | NUT, LOCK 1/4-20 | 2 | 26 | 11636 | WASHER, LOCK 6mm | 2 |
| 12 | 10018 | SCREW, CAP 1/4-20x3/4 | 1 | 27 | 57444 | BRACKET, HANDLE BAR STOP | 1 |
| 13 | 10602 | WASHER, FLAT 1/4 | 4 | 28 | ----- | SCREW (INCLUDED w/ ENGINE) | 2 |
| 14 | 50723 | MNTG. PLATE, THROTTLE CABLE OUTPUT | 1 | | | | |
| 15 | 10015 | NUT, LOCK 1/4-20 | 2 | | | | |



100 Thomas Johnson Drive, Frederick, MD 21702-4600 USA
 Phone (301) 663-1600 • 1-800-638-3326
 Fax (301) 663-1607 • 1-800-447-3326
 Website: www.edcoinc.com • Email: sales@edcoinc.com

Printed in USA
 ©2004

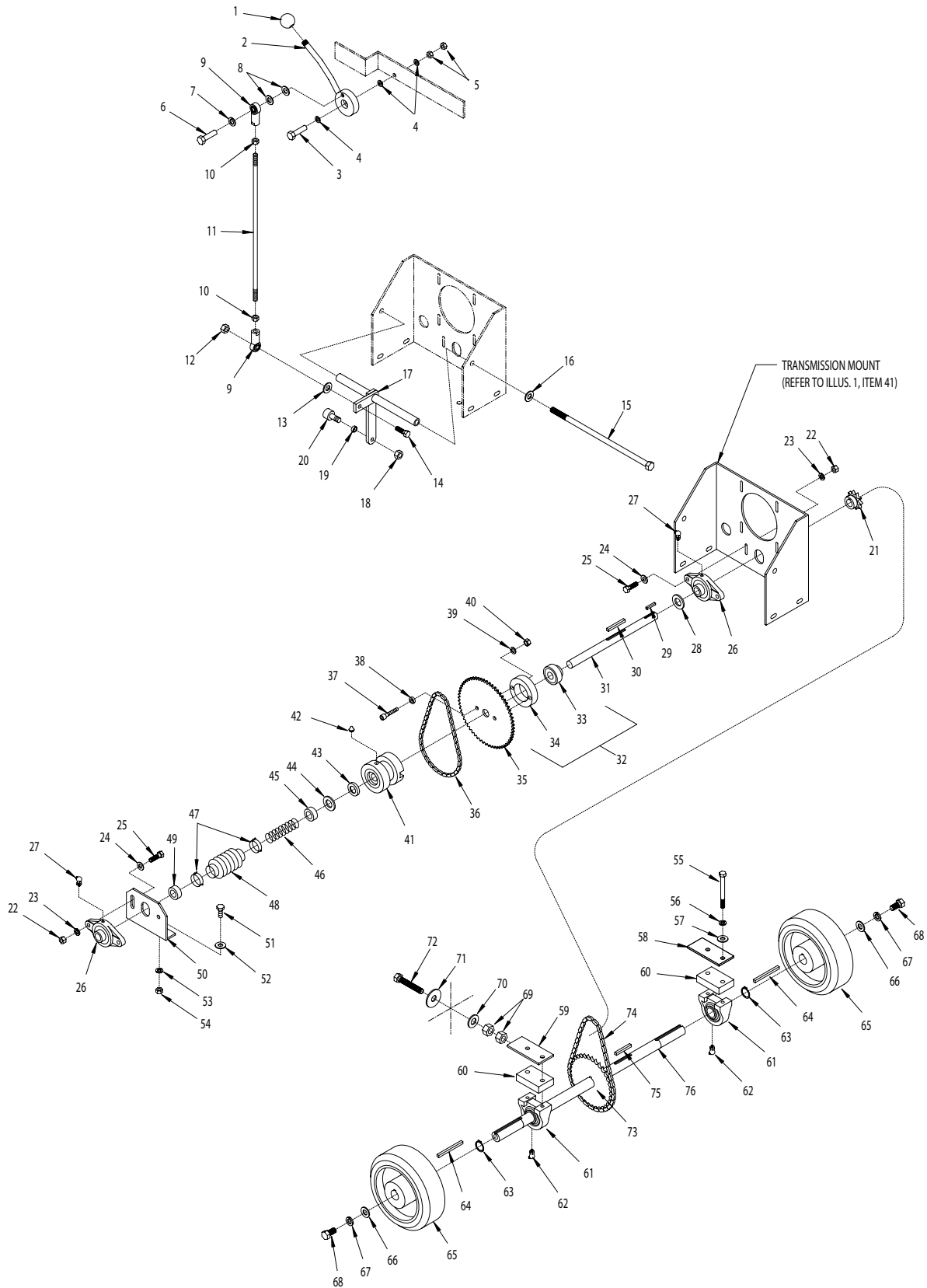
ILLUSTRATION 8 : TRANSMISSION ASSEMBLY



| PARTS LISTING - ILLUSTRATION 8 : TRANSMISSION ASSEMBLY | | | |
|--|--------|--|------|
| ITEM # | PART# | DESCRIPTION | QTY. |
| 1 | 50610 | GRIP w/ ROCKER SWITCH, QUADCO G301 | 1 |
| 2 | 50615 | CAP (RUBBER BOOT) "QUADCO" GRIP | 1 |
| 3 | 50614 | SWITCH, ROCKER, C&K #7105 | 1 |
| 4 | 50608 | LEVER, DRIVE | 1 |
| 5 | 57471 | SPRING, COMP. .468"OD x 1.25" FL | 2 |
| 6 | 10602 | WASHER, FLAT 1/4 | 2 |
| 7 | 10015 | NUT, LOCK 1/4-20 | 2 |
| 8 | 10315 | SCREW, CAP 1/4-20x1-1/2 | 2 |
| 9 | 10205 | NUT, LOCK 1/2-20 | 1 |
| 10 | 10312 | WASHER, FLAT 1/2 | 1 |
| 11 | 50613 | PLATE, DRIVE LEVER PRESSURE | 1 |
| 12 | 50428 | WASHER, FIBER 2-1/4 ODx1/2 ID x 1/8 THK. | 1 |
| 13 | 10877 | SCREW, CAP STSHW 10-24x1/2 | 5 |
| 14 | 50607 | GATE, DRIVE LEVER | 1 |
| 15 | 91144 | DECAL, DRIVE CONTROL | 1 |
| 16 | 10426 | WASHER, BELLEVILLE 1/2IDx3/64THK | 2 |
| 17 | 10321 | SCREW, CAP 1/2-20x1-1/4 | 1 |
| 18 | 10004 | NUT, LOCK 3/8-24 | 4 |
| 19 | 10025 | WASHER, FLAT 3/8 | 6 |
| 20 | 10309 | SCREW, CAP 3/8-24x1-1/4 | 4 |
| 21 | 10919 | ROD END, FEMALE 3/8-24 R.H. THREAD | 3 |
| 22 | 10014 | NUT 3/8-24 | 2 |
| 23 | 57124 | LINKAGE, ROD 3/8x14-5/8"L | 1 |
| 24 | 10312 | WASHER, FLAT 1/2 | 3 |
| 25 | 10407 | NUT, LOCK 1/2-13 | 1 |
| 26 | 57123 | BELLCRANK, DRIVE CONTROL | 1 |
| 27 | 10919L | ROD END, FEMALE 3/8-24 L.H. THREAD | 1 |
| 28 | 10014 | NUT 3/8-24 | 1 |
| 29 | 50420 | LINKAGE, ROD 3/8x5-3/4"L | 1 |
| 30 | 10025 | WASHER, FLAT 3/8 | 1 |
| 31 | 50422 | TRANS. CONTROL ARM | 1 |
| 32 | 10811 | WASHER, LOCK 3/8 | 1 |
| 33 | 10404 | NUT 3/8-16 | 1 |
| 34 | 10018 | SCREW, CAP 1/4-20x3/4 | 1 |
| 35 | 10038 | WASHER, LOCK 1/4 | 1 |
| 36 | 50266 | FAN BLADE W/ PLATE 7", TRANSMISSION | 1 |
| 37 | 50062 | SHEAVE, TRANS. 4"OD x 1 GR x .671"B | 1 |
| 38 | 10404 | NUT 3/8-16 | 4 |
| 39 | 10811 | WASHER, LOCK 3/8 | 4 |
| 40 | 50061 | TRANSMISSION, HYDROSTATIC | 1 |
| 41 | 10040 | WASHER, GARRET 17/32"ID x 1"OD x .054" THK | 4 |
| 42 | 10909 | BOLT, CARRIAGE 3/8-16x3 | 4 |
| 43 | 50071 | KEY, WOODRUFF 1/8x1/2 (#404) | 3 |
| 44 | 50048 | SPROCKET #3511 x .67" BORE | 1 |



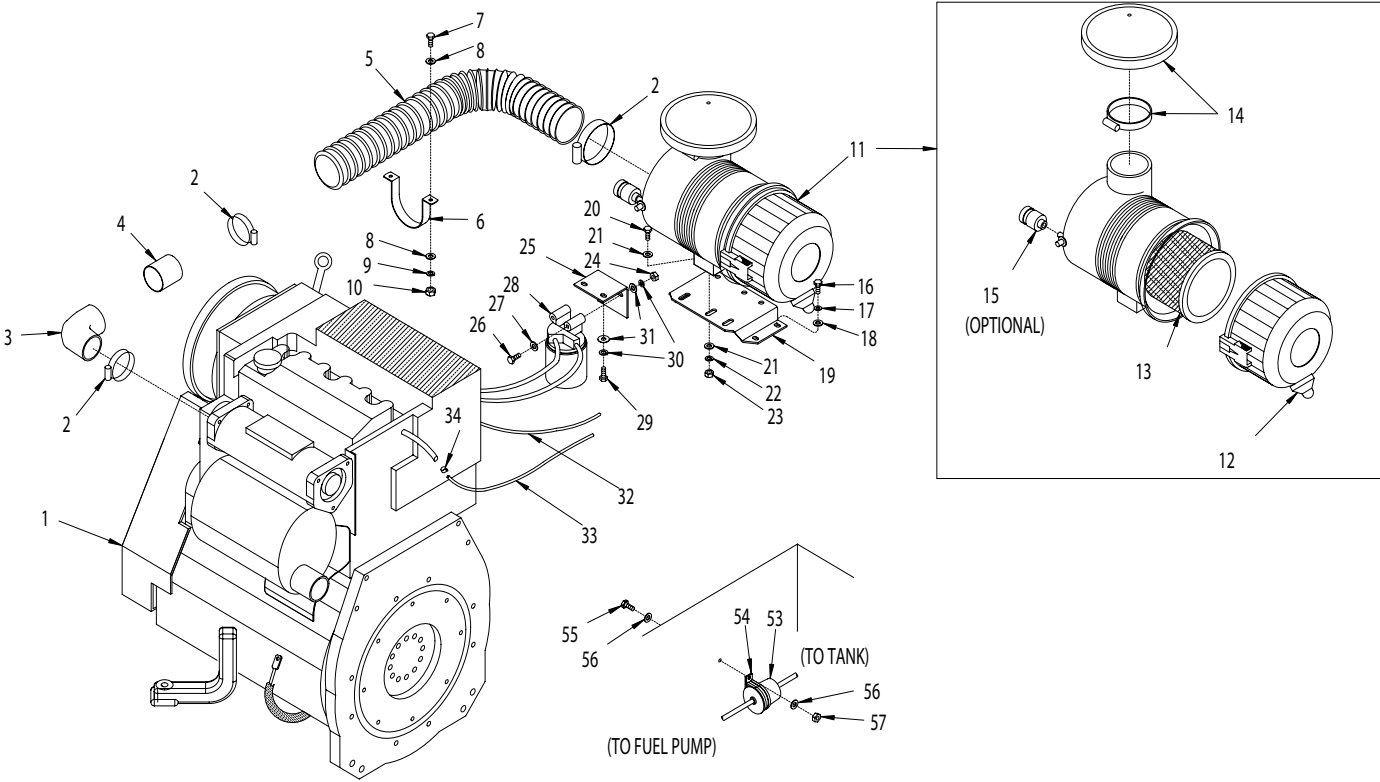
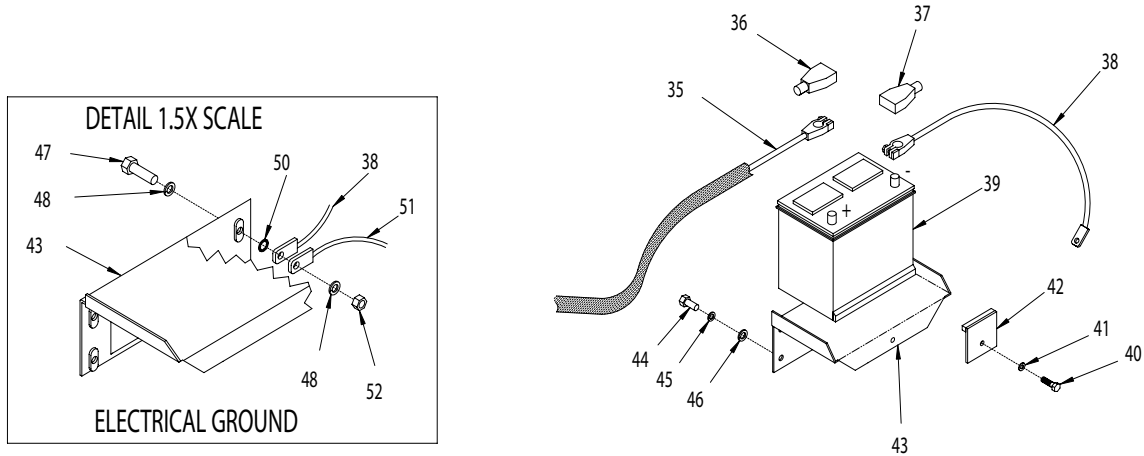
ILLUSTRATION 9 : CLUTCH & REAR AXLE ASSEMBLY



| PARTS LISTING - ILLUSTRATION 9 : CLUTCH & REAR AXLE ASSEMBLY | | | | | | | |
|--|--------|---|------|--------|--------|--------------------------------------|------|
| ITEM # | PART# | DESCRIPTION | QTY. | ITEM # | PART # | DESCRIPTION | QTY. |
| 1 | 14023 | KNOB, BALL 1-3/8 W/ 1/2-13THD., BLK. | 1 | 37 | 10354 | SCREW, SKT.HD.CAP 3/8-24x1-3/4 | 2 |
| | | | | 38 | 10113 | SPACER, STL. 9/16ODx3/8IDx7/32" | 2 |
| 2 | 50611 | LEVER, CLUTCH | 1 | 39 | 10811 | WASHER, LOCK 3/8 | 2 |
| 3 | 10816 | SCREW, CAP 3/8-24x1-1/2 | 1 | 40 | 10014 | NUT 3/8-24 | 2 |
| 4 | 10025 | WASHER, FLAT 3/8 | 3 | 41 | 57042 | CLUTCH, DOG BLOCK | 1 |
| 5 | 10004 | NUT, LOCK 3/8-24 | 2 | 42 | 10808 | FITTING, GREASE 1/4-28 STRAIGHT | 1 |
| 6 | 10309 | SCREW, CAP 3/8-24x1-1/4 | 1 | 43 | 3695 | SEAL, OIL .750x1.375x.250 | 1 |
| 7 | 10811 | WASHER, LOCK 3/8 | 1 | 44 | 10009 | WASHER, FLAT 3/4 | 1 |
| 8 | 10025 | WASHER, FLAT 3/8 | 2 | 45 | 57044 | CLUTCH SPRING CUP | 1 |
| 9 | 10919 | ROD END, FEM. 3/8-24 R.H. THD. | 2 | 46 | 10922 | SPRING, COMP. 1"ODx3.75" FL | 1 |
| 10 | 10014 | NUT 3/8-24 | 2 | 47 | 10768 | CLAMP, HOSE, SAE #16, ADJ. TO 1-1/2" | 2 |
| 11 | 50612 | LINKAGE, ROD 3/8x17"L | 1 | 48 | 10930 | BELLOWS 1-1/4IDx2-3/8 ELx1-3/4RL | 1 |
| 12 | 10004 | NUT, LOCK 3/8-24 | 1 | 49 | 10428 | COLLAR, LOCKING 3/4"ID | 1 |
| 13 | 10025 | WASHER, FLAT 3/8 | 1 | 50 | 50509 | MOUNT, JACKSHAFT BEARING | 1 |
| 14 | 10309 | SCREW, CAP 3/8-24x1-1/4 | 1 | 51 | 10021 | SCREW, CAP 3/8-24x1 | 4 |
| 15 | 10421 | SCREW, CAP 1/2-13x13 | 1 | 52 | 10025 | WASHER, FLAT 3/8 | 4 |
| 16 | 10312 | WASHER, FLAT 1/2 | 1 | 53 | 10811 | WASHER, LOCK 3/8 | 4 |
| 17 | 50450 | BELL CRANK, CLUTCH | 1 | 54 | 10014 | NUT 3/8-24 | 4 |
| 18 | 10004 | NUT, LOCK 3/8-24 | 1 | 55 | 10318 | SCREW, CAP 3/8-16x3-3/4 | 4 |
| 19 | 10113 | SPACER, STL. 9/16ODx3/8IDx7/32 | 1 | 56 | 10811 | WASHER, LOCK 3/8 | 4 |
| 20 | 10924 | CAM FOLLOWER BEARING 3/4"x 3/8-24 THREAD | 1 | 57 | 10025 | WASHER, FLAT 3/8 | 4 |
| | | | | 58 | 50511 | SHIM, AXLE BEARING | 1 |
| 21 | 50436 | SPROCKET #40B10x3/4"BORE | 1 | 59 | 50512 | SHIM, AXLE BEARING W/ADJ. | 1 |
| 22 | 10014 | NUT 3/8-24 | 4 | 60 | 50510 | SPACER, BEARING | 2 |
| 23 | 10811 | WASHER, LOCK 3/8 | 4 | 61 | 50222 | BEARING, BALL 1" TPB | 2 |
| 24 | 10025 | WASHER, FLAT 3/8 | 4 | 62 | 10960 | FITTING, GREASE 1/4-28x45D | 2 |
| 25 | 10309 | SCREW, CAP 3/8-24x1-1/4 | 4 | 63 | 10906 | RETAINING RING, EXT. 1" | 2 |
| 26 | 50049 | BEARING, BALL 3/4" 2-HOLE FLANGE | 2 | 64 | 10132 | KEY 1/4SQ.x3 | 2 |
| | | | | 65 | 61065 | WHEEL 8x3x1"BORE | 2 |
| 27 | 10960 | FITTING, GREASE 1/4-28x45D | 2 | 66 | 10433 | WASHER, BELLEVILLE 1/2IDx3/32THK | 2 |
| 28 | 10009 | WASHER, FLAT 3/4 | 1 | 67 | 10045 | WASHER, LOCK 1/2 | 2 |
| 29 | 50523 | KEY 3/16SQ.x1-1/8 | 1 | 68 | 10914 | SCREW, CAP 1/2-13x1 | 2 |
| 30 | 10307 | KEY 1/4SQ.x2-1/4 | 1 | 69 | 10417 | NUT 1/2-13 | 2 |
| 31 | 50518 | JACKSHAFT, CLUTCH 11-1/2" | 1 | 70 | 10312 | WASHER, FLAT 1/2 | 1 |
| 32 | 57038A | BEARING & CARRIER ASSY., CLUTCH | 1 | 71 | 10433 | WASHER, BELLEVILLE 1/2IDx3/32THK | 1 |
| | | | | 72 | 10340 | BOLT, TAP 1/2-13x3 (FULL THD.) | 1 |
| 33 | 57038 | BEARING, BALL 3/4IDx1.8504"OD | 1 | 73 | 61126 | SPROCKET #40B34x1"BORE | 1 |
| 34 | 57039 | CARRIER, CLUTCH BEARING | 1 | 74 | 50542 | CHAIN #40x25"LOA | 1 |
| 35 | 50476 | SPROCKET, CLUTCH #35A60 | 1 | 75 | 10115 | KEY 1/4SQ.x2 | 1 |
| 36 | 64032 | CHAIN #35x24-1/2"LOA | 1 | 76 | 50519 | AXLE SHAFT 1"DIA.x25"L | 1 |



ILLUSTRATION 10 : ENGINE GROUPING

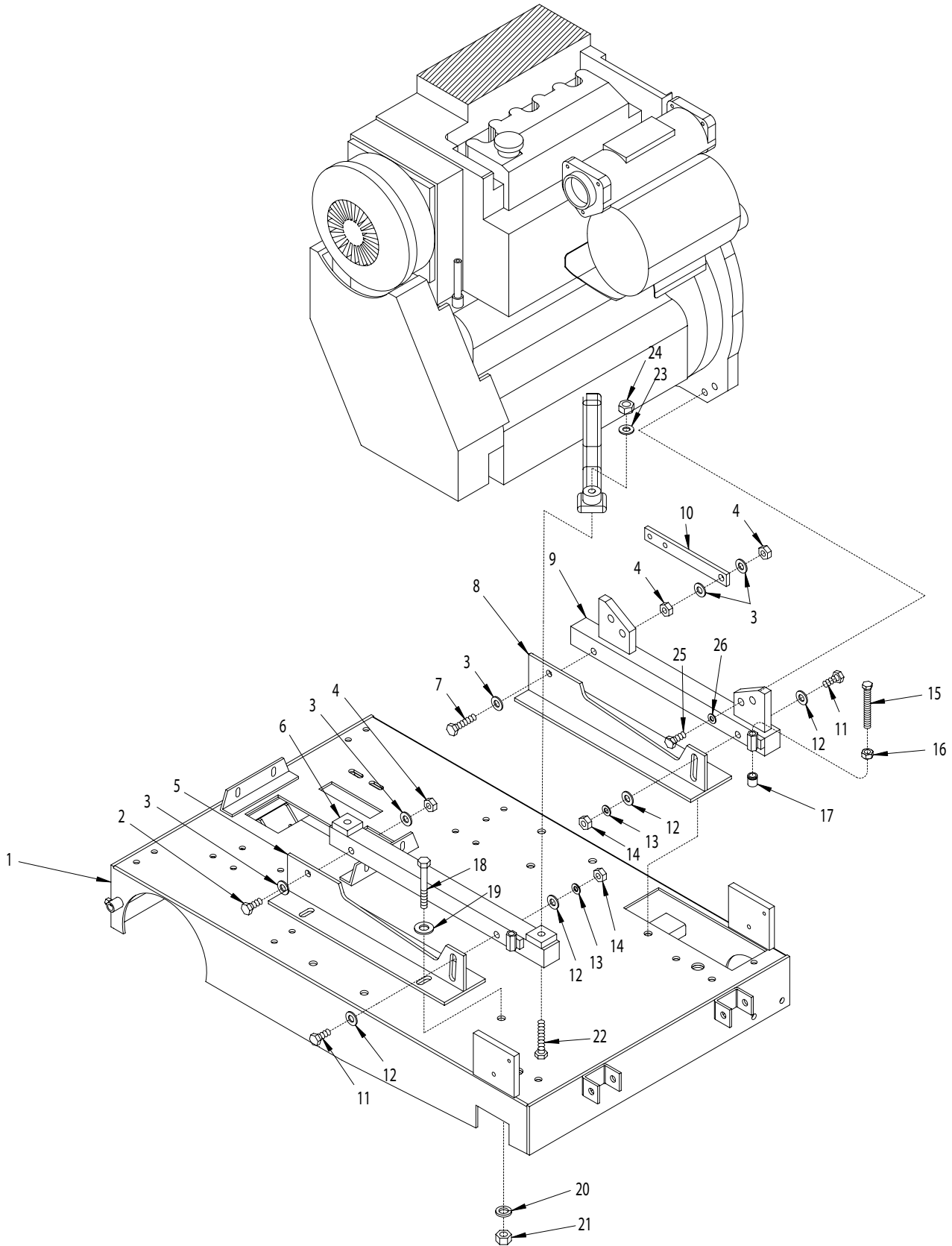


PARTS LISTING - ILLUSTRATION 10 : ENGINE GROUPING

| ITEM# | PART# | DESCRIPTION | QTY. | ITEM# | PART# | DESCRIPTION | QTY. |
|-------|-------|---------------------------------------|------|-------|--------|------------------------------------|------|
| 1 | 15050 | ENGINE, DEUTZ 31 HP TIER II | 1 | 30 | 10038 | WASHER, LOCK 1/4 | 4 |
| 2 | 10849 | CLAMP, HOSE, SAE #52, ADJ. TO 3-3/4 | 4 | 31 | 10602 | WASHER, FLAT 1/4 | 4 |
| 3 | ----- | HOSE ELBOW (INCLUDED W/ ENGINE) | 1 | 32 | 50717 | HOSE, FUEL 1/4"ID X 37"L | 1 |
| 4 | 50714 | PIPE 2-1/2"OD X 2"L, AIR CLEANER HOSE | 1 | 33 | 50718 | HOSE, FUEL RETURN LINE 1/4"IDx42"L | 1 |
| 5 | 50715 | HOSE, FLEXIBLE 3"IDx26"L | 1 | 34 | 10762 | CLAMP, HOSE SPRING-TYPE 3/8" GREEN | 4 |
| 6 | 57469 | HANGER, HOSE 3.25" | 1 | 35 | 57055 | CABLE, BATTERY 4GA. X 53" (RED) | 1 |
| 7 | 10031 | SCREW, CAP 1/4-20x1 | 2 | 36 | 10928 | INSULATOR, BAT.TERM.POST (RED) | 1 |
| 8 | 10602 | WASHER, FLAT 1/4 | 4 | 37 | 10929 | INSULATOR, BAT.TERM.POST (BLACK) | 1 |
| 9 | 10038 | WASHER, LOCK 1/4 | 2 | 38 | 50323B | CABLE, BATTERY 4GA. X 12" (BLACK) | 1 |
| 10 | 10013 | NUT 1/4-20 | 2 | 39 | 57416 | BATTERY 12V/880CCA (POST TERM.) | 1 |
| 11 | 15150 | AIR CLEANER ASSY., 3-FW-E1 | 1 | 40 | 10333 | SCREW, CAP 3/8-16x1 | 1 |
| 12 | 15144 | AIR CLEANER DUCKBILL DRAIN | 1 | 41 | 10811 | WASHER, LOCK 3/8 | 1 |
| 13 | 15151 | ELEMENT, AIR FILTER PRIMARY | 1 | 42 | 57418 | CLAMP, BATTERY HOLD-DOWN | 1 |
| 14 | 15152 | CAP, RAIN, AIR CLEANER | 1 | 43 | 57417 | TRAY, BATTERY | 1 |
| 15 | 15154 | AIR CLEANER DUST LOAD INDICATOR | 1 | 44 | 10907 | SCREW, CAP 3/8-16 X 3/4 | 3 |
| 16 | 10018 | SCREW, CAP 1/4-20x3/4 | 4 | 45 | 10811 | WASHER, LOCK 3/8 | 3 |
| 17 | 10038 | WASHER, LOCK 1/4 | 4 | 46 | 10025 | WASHER, FLAT 3/8 | 3 |
| 18 | 10602 | WASHER, FLAT 1/4 | 4 | 47 | 10333 | SCREW, CAP 3/8-16 X 1-1/4 | 1 |
| 19 | 50652 | MOUNT BRKT., AIR CLEANER | 1 | 48 | 10811 | WASHER, LOCK 3/8 | 2 |
| 20 | 10053 | SCREW, CAP 5/16-18x3/4 | 2 | 49 | 10025 | WASHER, FLAT 3/8 | 1 |
| 21 | 10213 | WASHER, FLAT 5/16 | 4 | 50 | 10453 | WASHER, LOCK, INT. TOOTH 3/8" | 1 |
| 22 | 10801 | WASHER, LOCK 5/16 | 2 | 51 | 57456 | CABLE, EYE-EYE 4GA. X 49" (BLACK) | 1 |
| 23 | 10054 | NUT 5/16-18 | 2 | 52 | 10404 | NUT 3/8-16 | 1 |
| 24 | 10054 | NUT 5/16-18 | 2 | 53 | 15116 | FILTER, FUEL 1/4" IN LINE | 1 |
| 25 | 50716 | BRACKET, FUEL FILTER | 1 | 54 | 11566 | CLAMP, LOOM, 1-3/4" (SAE SIZE 28) | 1 |
| 26 | 10341 | SCREW, CAP 5/16-18x2-1/4 | 2 | 55 | 10031 | SCREW, CAP 1/4-20 X 1 | 1 |
| 27 | 10213 | WASHER, FLAT 5/16 | 2 | 56 | 10602 | WASHER, FLAT 1/4 | 2 |
| 28 | ----- | FILTER, FUEL (INCLUDED W/ ENGINE) | 1 | 57 | 10150 | NUT, HEX NYLON LOCK 1/4-20 | 1 |
| 29 | 10018 | SCREW, CAP 1/4-20x3/4 | 2 | | | | |



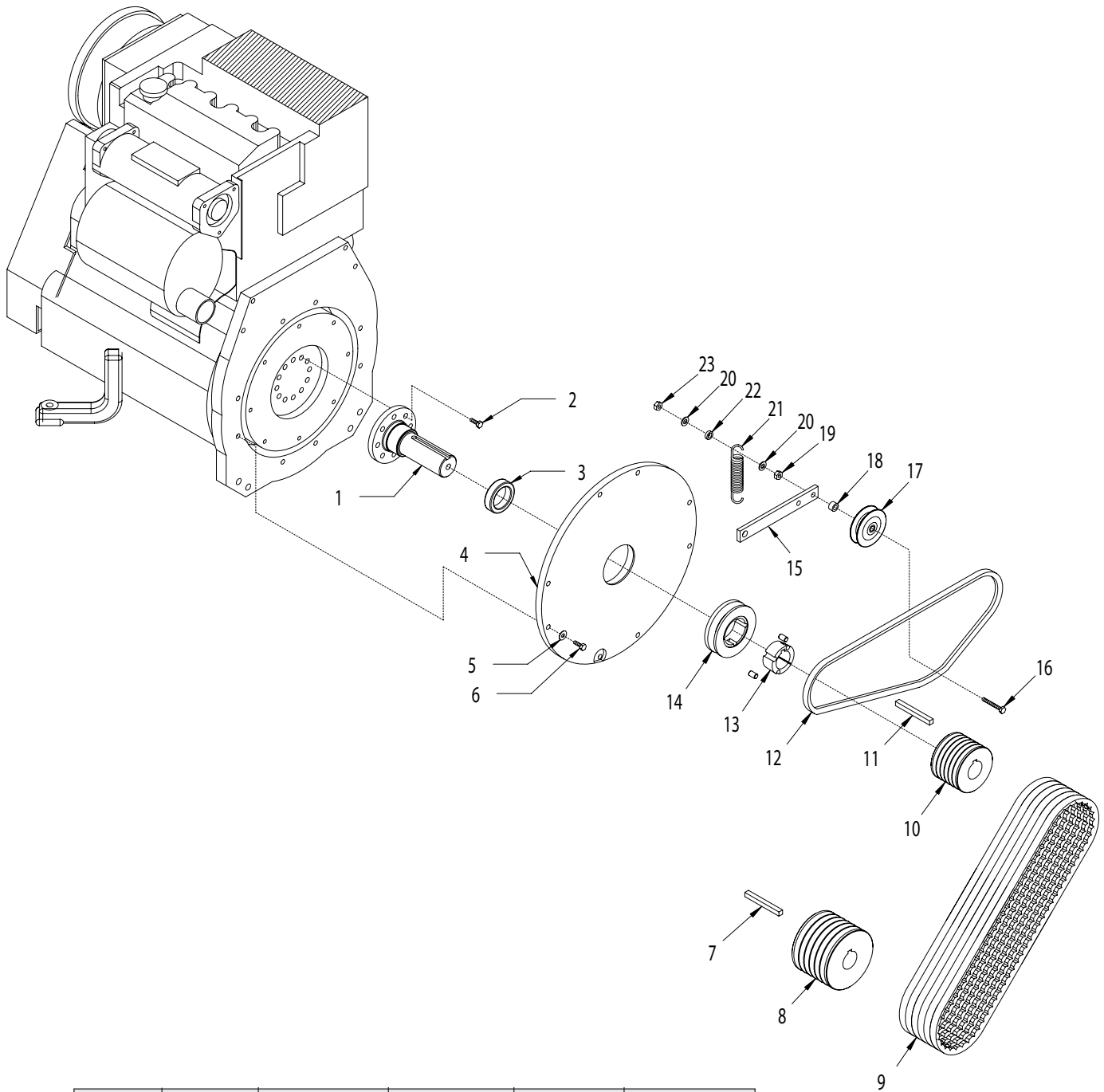
ILLUSTRATION 11: ENGINE MOUNT GROUPING



| PARTS LISTING - ILLUSTRATION 11 : ENGINE MOUNT GROUPING | | | |
|--|---------------|--|-------------|
| ITEM # | PART # | DESCRIPTION | QTY. |
| 1 | 50701 | MAIN FRAME (REFER TO ILLUS. 1, ITEM #35) | 1 |
| 2 | 10323 | SCREW, CAP 1/2-13 X 2-1/2 | 1 |
| 3 | 10312 | WASHER, FLAT 1/2 | 5 |
| 4 | 10407 | NUT, LOCK 1/2-13 | 3 |
| 5 | 50706 | BRKT., RIGHT ENGINE MOUNT | 1 |
| 6 | 50708 | BAR, RIGHT ENGINE MOUNT | 1 |
| 7 | 10324 | SCREW, CAP 1/2-13x3-1/2 | 1 |
| 8 | 50707 | BRKT., LEFT ENGINE MOUNT | 1 |
| 9 | 50709 | BAR, LEFT ENGINE MOUNT | 1 |
| 10 | 50544 | IDLER ARM (REFER TO ILLUS. 12, ITEM #16) | 1 |
| 11 | 10499 | SCREW, CAP 1/2-13 X 3 | 2 |
| 12 | 10312 | WASHER, FLAT 1/2 | 4 |
| 13 | 10045 | WASHER, LOCK 1/2 | 2 |
| 14 | 10417 | NUT 1/2-13 | 2 |
| 15 | 10373 | BOLT, TAP 1/2-13 X 5 (FULL THD.) | 2 |
| 16 | 10417 | NUT 1/2-13 | 2 |
| 17 | 50710 | TOGGLE PAD 7/8"D X 15/16"H X 1/2-13 | 2 |
| 18 | 10324 | SCREW, CAP 1/2-13x3-1/2 | 4 |
| 19 | 10312 | WASHER, FLAT 1/2 | 4 |
| 20 | 10045 | WASHER, LOCK 1/2 | 4 |
| 21 | 10417 | NUT 1/2-13 | 4 |
| 22 | 10386 | SCREW, CAP 1/2-13 X 4-1/2 | 2 |
| 23 | 10312 | WASHER, FLAT 1/2 | 2 |
| 24 | 10155 | NUT, HEX NYLON LOCK 1/2-13 | 2 |
| 25 | 11635 | SCREW, CAP M14 X 2.0P X 50MM | 4 |
| 26 | 11632 | WASHER, LOCK 14MM | 4 |



ILLUSTRATION 12 : BELT DRIVE GROUPING



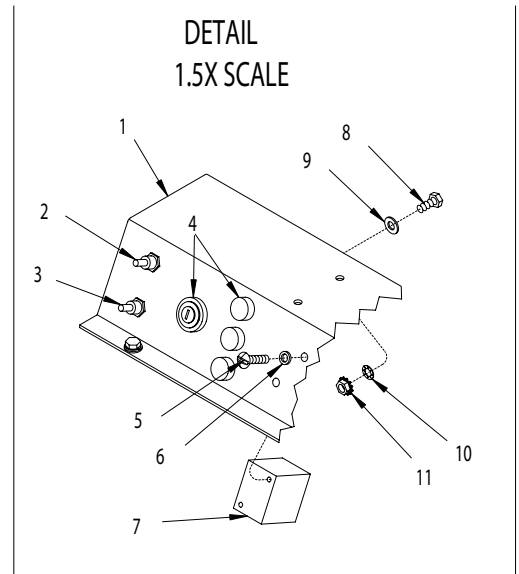
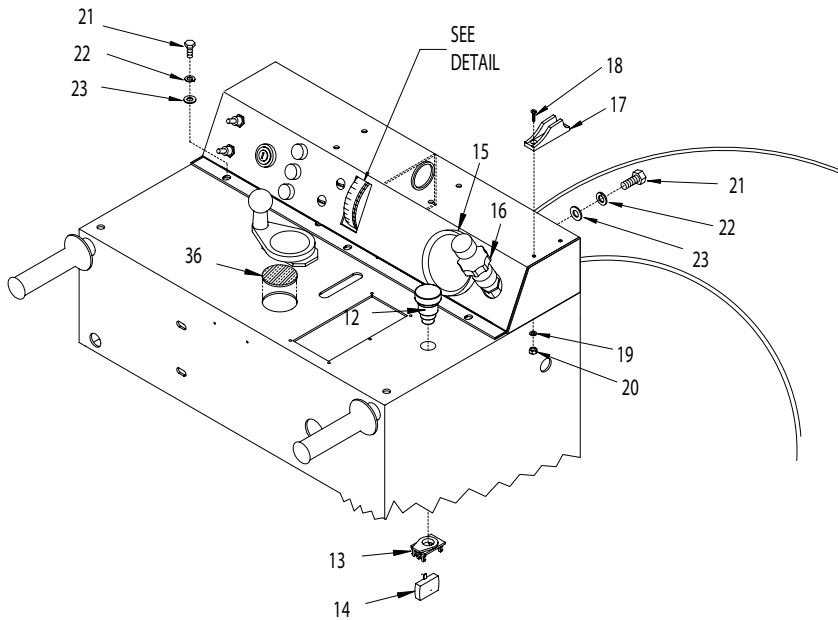
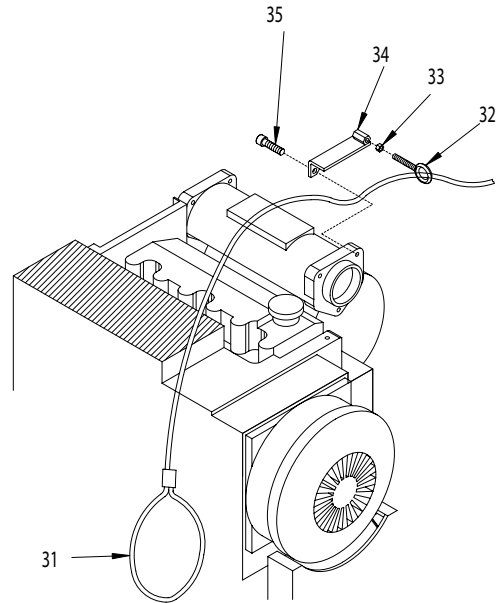
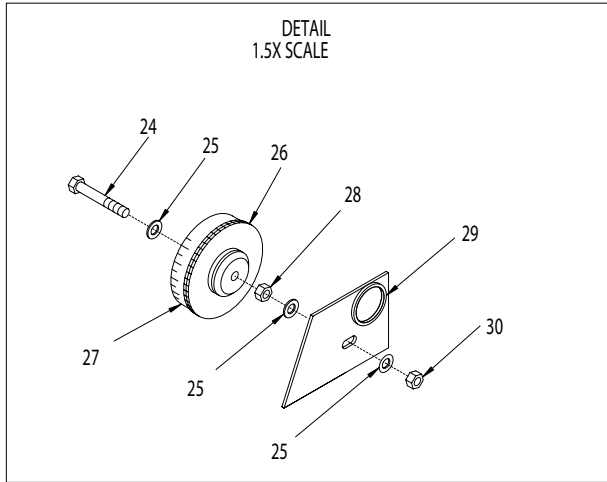
| BLADE SIZE | BLADE SPEED (RPM) | ENGINE SHEAVE DIA. (ITEM #11) | ARBOR SHEAVE DIA. (ITEM #9) | ARBOR BELT SIZE (ITEM #10) | TRANS. BELT SIZE (ITEM #12) |
|------------|-------------------|-------------------------------|-----------------------------|----------------------------|-----------------------------|
| 24-26" | 2129 | 3.65"x6 GR. | 4.80"x6 GR. | 3VX-500 | AP-55 |
| 18-20" | 2148 | 2.80"x6 GR. | 3.65"x6 GR. | 3VX-475 | AP-55 |
| 14-16" | 2800 | 3.65"x6 GR. | 3.65"x6 GR. | 3VX-475 | AP-55 |



| PARTS LISTING - ILLUSTRATION 12 : BELT DRIVE GROUPING | | | |
|---|--------|--|------|
| ITEM # | PART # | DESCRIPTION | QTY. |
| 1 | 50731 | SHAFT, STUB 1-7/16" | 1 |
| 2 | 11633 | SCREW, CAP M10x1.0Px50mm | 8 |
| 3 | 57409 | BEARING, RADIAL BALL 55x90x18mm | 1 |
| 4 | 57408 | ADAPTER PLATE 16", HOUSING | 1 |
| 5 | 11631 | WASHER, LOCK 10mm | 8 |
| 6 | | SCREW, CAP | |
| | 77267 | M10x1.5Px35mm | 7 |
| | 77266 | M10X1.5PX30mm | 1 |
| 7 | 10074 | KEY 3/8 SQ.x3-1/2 | 1 |
| *8 | 10511 | SHEAVE 3.65"ODx6GR.3Vx1-7/16"B | 1 |
| | 10512 | SHEAVE 4.80"ODx6GR.3Vx1-7/16"B | |
| *9 | 10231 | BELT 3VX-500 | 6 |
| | 10235 | BELT 3VX-475 | |
| *10 | 10510 | SHEAVE 2.8"ODx6GR.3Vx1-7/16"B | 1 |
| | 10511 | SHEAVE 3.65"ODx6GR.3Vx1-7/16"B | |
| | 10512 | SHEAVE 4.80"ODx6GR.3Vx1-7/16"B | |
| 11 | 10074 | KEY 3/8 SQ.x3-1/2 | 1 |
| *12 | 10284 | BELT AP-55 | 1 |
| 13 | 10531 | BUSHING, TAPER-LOCK 1610 1-7/16"B | 1 |
| 14 | 10528 | SHEAVE 4.15"ODx1GR.BxTAPER-LOCK | 1 |
| 15 | 50544 | IDLER ARM (REFER TO ILLUS. 11, ITEM #10) | 1 |
| 16 | 10393 | SCREW, CAP 3/8-24x2-1/2 | 1 |
| 17 | 50115 | IDLER PULLEY 3"ODx1GR.ABx3/8"B | 1 |
| 18 | 10011 | SPACER, STEEL 5/8OD X 3/8ID X 3/8THK | 1 |
| 19 | 10014 | NUT 3/8-24 | 1 |
| 20 | 10025 | WASHER, FLAT 3/8 | 2 |
| 21 | 50074 | SPRING, EXT. 1"ODx3-15/16 | 1 |
| 22 | 10113 | SPACER, STL 9/16ODx3/8IDx7/32 | 1 |
| 23 | 10004 | NUT, LOCK 3/8-24 | 1 |
| *NOTE: SEE PAGE 22 FOR BELT AND PULLEY CHART SIZES AND SPECS. | | | |



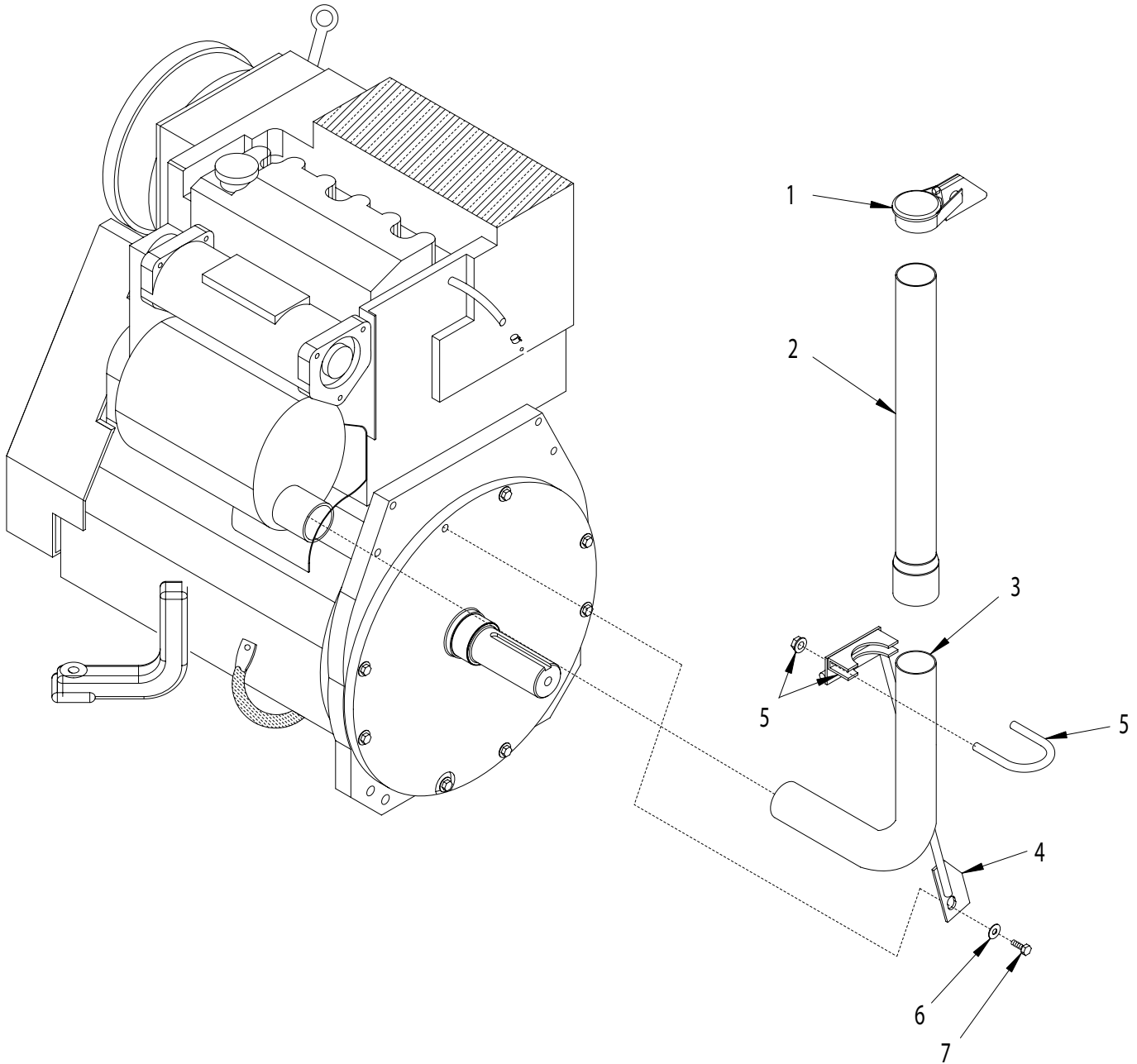
ILLUSTRATION 13 : INSTRUMENT PANEL GROUPING



| PARTS LISTING - ILLUSTRATION 13 : INSTRUMENT PANEL GROUPING | | | |
|---|-------|---|------|
| ITEM# | PART# | DESCRIPTION | QTY. |
| 1 | 50727 | INSTRUMENT PANEL | 1 |
| 2 | 10619 | SWITCH, TOGGLE SPDT (BLADE SAVER) | 1 |
| 3 | 10633 | SWITCH, TOGGLE SPST (WATER PUMP) | 1 |
| 4 | ----- | SWITCH & INDICATOR LIGHTS (INCLUDED W/ ENGINE) | 1 |
| 5 | 11618 | SCREW, MACHINE 10-24 X 3/8 | 2 |
| 6 | 10831 | WASHER, LOCK, INT. TOOTH #10 | 2 |
| 7 | ----- | SWITCH, MURPHY (INCLUDED W/ ENGINE) | 1 |
| 8 | 10018 | SCREW, CAP 1/4-20 X 3/4 | 1 |
| 9 | 10602 | WASHER, FLAT 1/4 | 1 |
| 10 | 10451 | WASHER, LOCK, INT. TOOTH 1/4" | 1 |
| 11 | 10861 | NUT, KEPS 1/4-20 | 1 |
| 12 | 15147 | SWITCH PUSH BUTTON ONLY, E-STOP | 1 |
| 13 | 15148 | SWITCH ASSY. CLIP ONLY, E-STOP | 1 |
| 14 | 15167 | SWITCH CONTACT BLOCK, N.C. E-STOP | 1 |
| 15 | ----- | TACH/HOUR METER (COMES WITH ENGINE) | 1 |
| 16 | 50560 | CABLE, VERNIER ADJ. LOCKING CONTROL (THROTTLE CABLE, SEE ILLUS, 7, ITEM #22) | 1 |
| 17 | 11591 | ROPE CLEAT, NYLON JAM 3/16"-5/16" | 1 |
| 18 | 11594 | SCREW, MACHINE 10-32x5/8 SLT.FLT | 2 |
| 19 | 10831 | WASHER, LOCK INT. TOOTH #10 | 2 |
| 20 | 10832 | NUT 10-32 | 2 |
| 21 | | SCREW, CAP | |
| | 10018 | 1/4-20x3/4 | 6 |
| | 10031 | 1/4-20x1 | 2 |
| 22 | 10038 | WASHER, LOCK 1/4 | 8 |
| 23 | 10602 | WASHER, FLAT 1/4 | 8 |
| 24 | 10336 | SCREW, CAP 3/8-24x2-1/4 | 1 |
| 25 | 10025 | WASHER, FLAT 3/8 | 3 |
| 26 | 57132 | WHEEL, DEPTH GAUGE | 1 |
| 27 | 50543 | STICKER, DEPTH GAUGE | 1 |
| 28 | 10004 | NUT, LOCK 3/8-24 | 1 |
| 29 | 57149 | GROMMET 1-1/4" ID x 1/8" GRV. x 1-1/2" GD | 1 |
| 30 | 10004 | NUT, LOCK 3/8-24 | 1 |
| 31 | 50555 | ROPE, GUIDE BAR | 1 |
| 32 | 11593 | BOLT, EYE SHOULDER 5/16-18 X 1-1/8 | 1 |
| 33 | 10054 | NUT 5/16-18 | 1 |
| 34 | 50728 | BRACKET, GUIDE ROPE | 1 |
| 35 | 11665 | SCREW, SKT.HD.CAP M8 X 1.25P X 35MM | 2 |
| 36 | 65022 | PLUG, HOLE 2" | 1 |

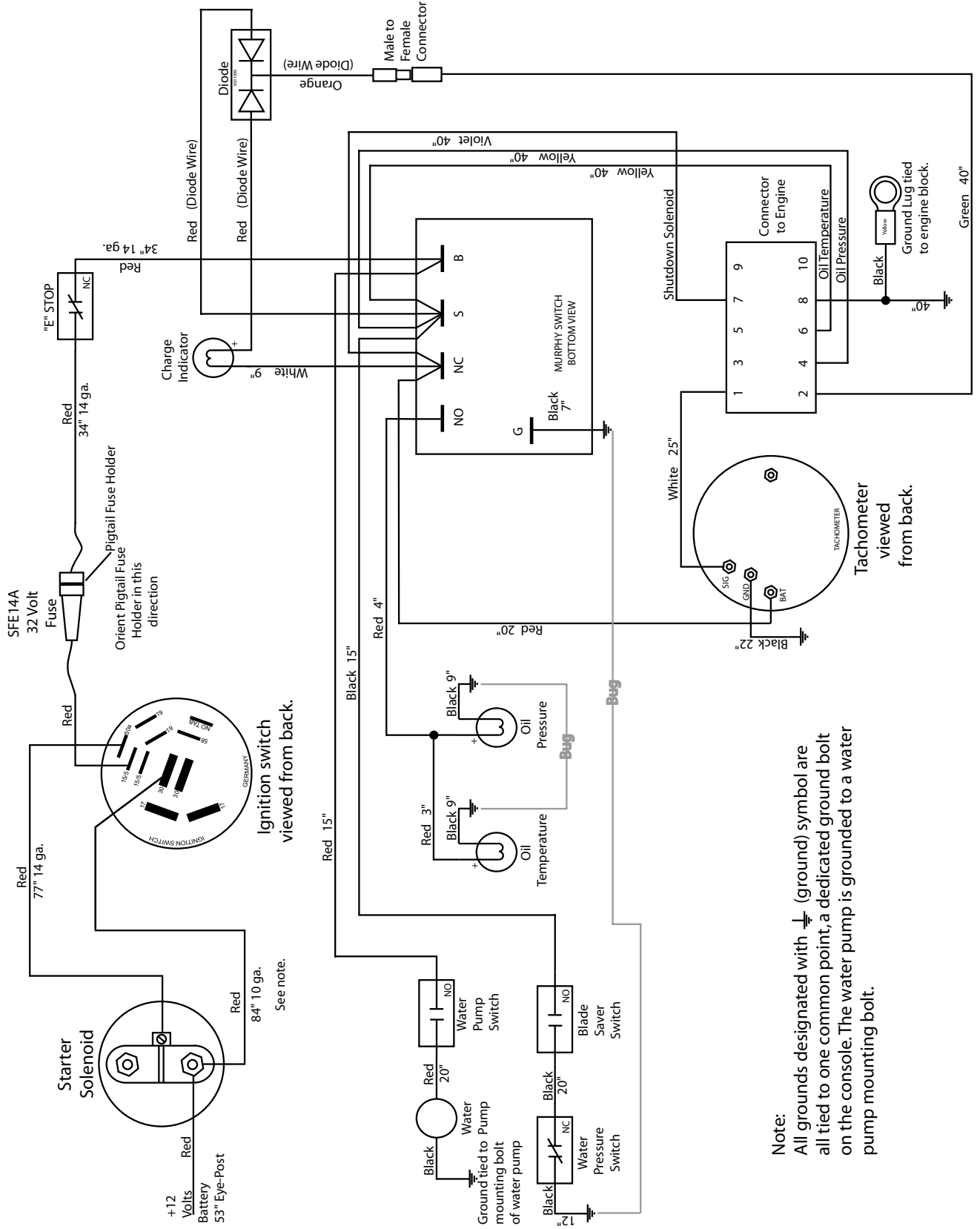


ILLUSTRATION 14 : EXHAUST GROUPING



| ITEM | PART # | DESCRIPTION | QTY. |
|------|--------|----------------------------------|------|
| 1 | 15159 | CAP, RAIN, EXHAUST 1-7/8" | 1 |
| 2 | 57453 | PIPE, EXHAUST 1-7/8 X 18 | 1 |
| 3 | ----- | ELBOW, EXHAUST (COMES W/ ENGINE) | 1 |
| 4 | 50726 | BRACE, EXHAUST TUBE | 1 |
| 5 | 11630 | CLAMP, EXHAUST PIPE 2" HD | 1 |
| 6 | 11631 | WASHER, LOCK 10MM | 1 |
| 7 | 77267 | SCREW, CAP M10 X 1.5P X 35MM | 1 |

ILLUSTRATION 15 : WIRING DIAGRAM



Note:
 All grounds designated with \perp (ground) symbol are all tied to one common point, a dedicated ground bolt on the console. The water pump is grounded to a water pump mounting bolt.



LIMITED EQUIPMENT WARRANTY

Equipment Development Company, Inc. herein referred to as EDCO warrants that each new unit manufactured by EDCO to be free from defects in material and workmanship in normal use and service for a period of (1) one year (except in the case of the cutter drum assembly on all model concrete asphalt planes, in which case the warranty period shall be 90 days) from date of shipment to the original buyer or equipment rental center owner.

EDCO will, at its option, repair or replace, at the EDCO factory or at a point designated by EDCO any part, which shall appear to the satisfaction of EDCO inspection to have been defective in material or workmanship.

This warranty, does not apply to failure occurring as a result of abuse, misuse, negligent repairs, corrosion, erosion, normal wear and tear, alterations or modifications made to the product without express written consent of EDCO: or failure to follow the recommended operating practices and maintenance procedures as provided in the products operating and maintenance manuals.

This warranty does not obligate EDCO to bear any transportation charges in connection with the replacement or repair of defective parts. This warranty does not obligate EDCO to bear any expense for travel time or of personnel in connection with any service calls.

Accessories or equipment furnished and installed on the product by EDCO but manufactured by others, including but not limited to engines, motors, electrical equipment, transmissions, etc., shall carry the accessory manufacturers' own warranty.

THIS WARRANTY IS IN LIEU OF ALL OTHER WARRANTIES, EXPRESSED OR IMPLIED, OR STATUTORY, INCLUDING ANY WARRANTIES OF MERCHANTABILITY OR OF FITNESS FOR A PARTICULAR PURPOSE.

LIABILITY LIMITATIONS

The remedies of the user set forth under provisions of warranty outlined above are the exclusive and total liability of EDCO with the respect to their sale or the equipment and service furnished hereunder, in connection with the performance or breach thereof, or from the sale, delivery, installation, repair or technical direction covered by or furnished under the sale, whether based on contract, warranty, negligence, indemnity, strict liability, or otherwise shall not exceed the purchase price of the unit of equipment upon which such liability is based.

EDCO will not in any event be liable to the user, any successors in interest or any beneficiary or assignee relating to this sale for any consequential, incidental, indirect, special or punitive damages arising out of this sale or any breach thereof, or any defects on, or failure of, or malfunction of the equipment under this sale based upon loss of use, lost profits or revenue, interest, lost goodwill, work stoppage, impairment of other goods, loss by reason of shutdown or non-operation, increased expenses of operation of the equipment, cost of purchase or replacement power of claims of users or customers of the user for service interruption whether or not such loss or damage is based on contract, warranty, negligence, indemnity, strict liability, or otherwise.

EDCO reserves the right to modify, alter and improve any part or parts without incurring any obligation to replace any part or parts previously sold without such modified, altered or improved part or parts.

No person is authorized to give any other warranty or to assume any additional obligation on EDCO's behalf unless made in writing and signed by an officer of EDCO.

Equipment Development Company, Inc.

USE ONLY GENUINE EDCO PARTS AND ACCESSORIES

For your own safety, the safety of others and the life of your machine

