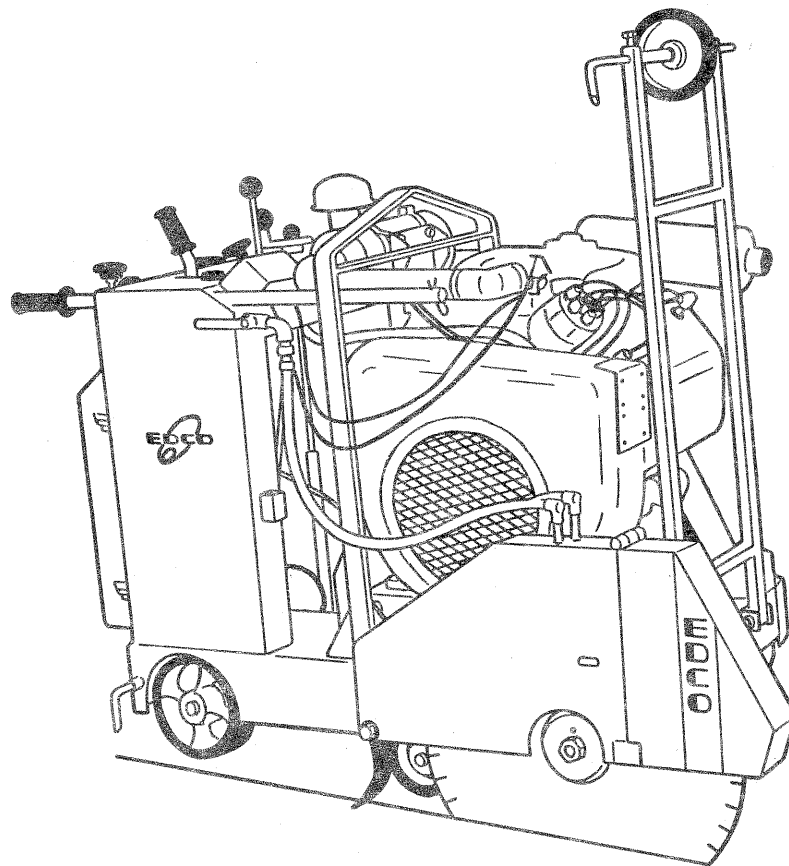


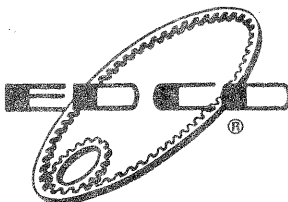
Oct. 1, 1990

Self-propelled CONCRETE / ASPHALT SAW

PARTS MANUAL



Model SS-35

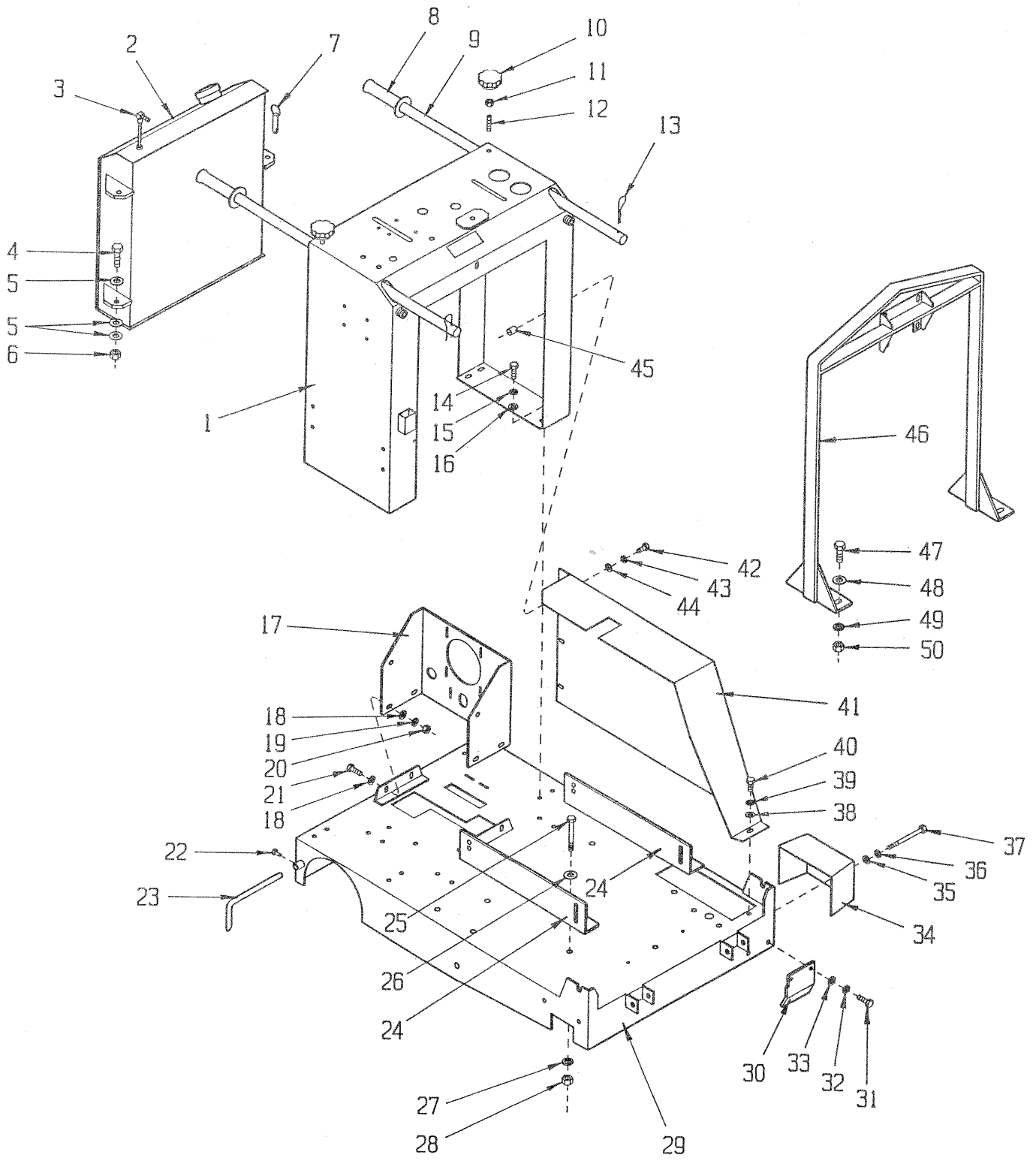


EQUIPMENT DEVELOPMENT COMPANY, INC.

100 THOMAS JOHNSON DRIVE, FREDERICK, MARYLAND 21702-4305 USA
301-663-1600 TOLL FREE 1-800-638-3326 FAX 301-663-1607

PRINTED IN U.S.A.

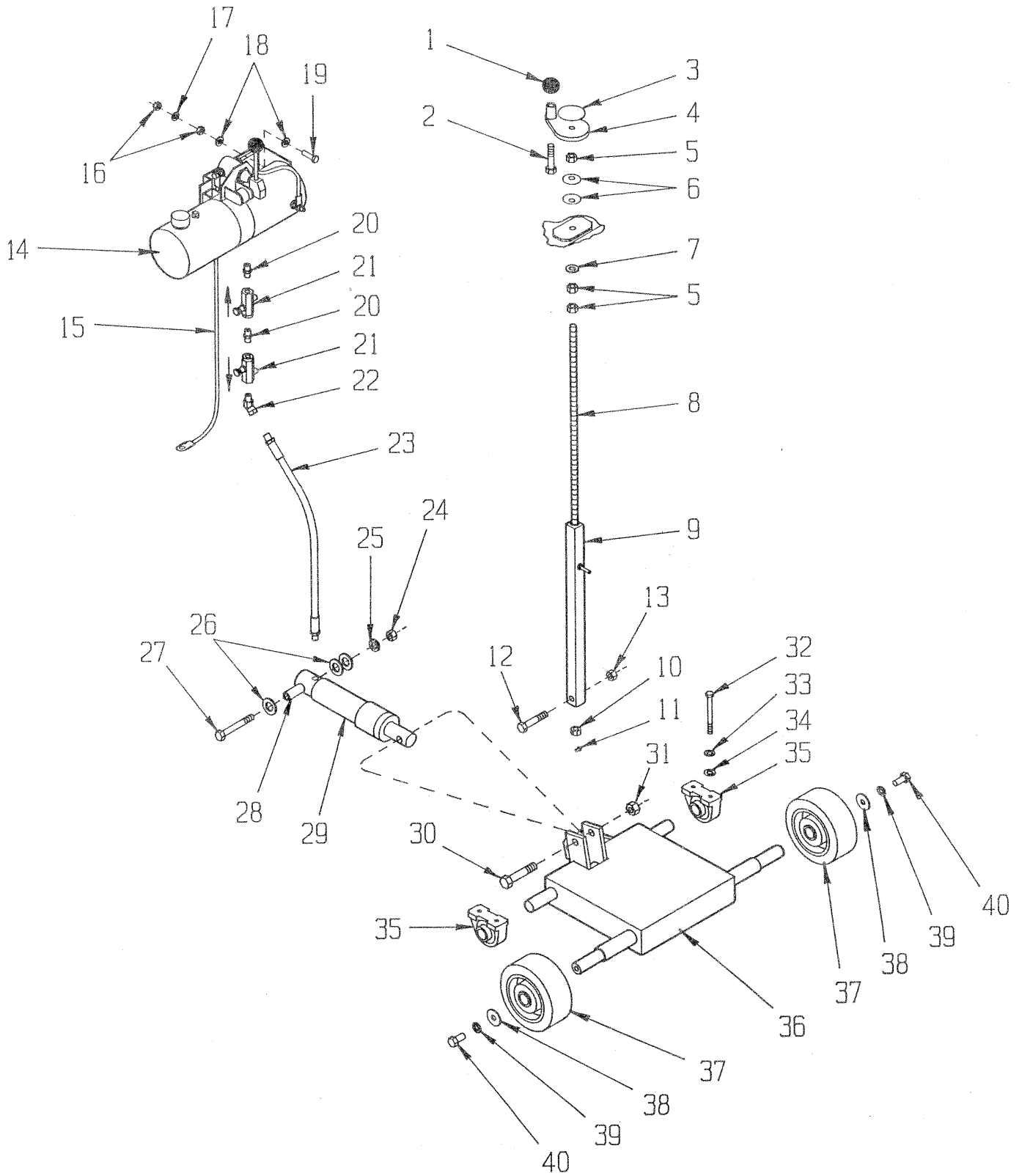
Fig. 1: Frame Assembly



Parts List - Fig. 1: Frame Assembly

| Item # | Part # | Qty. | Description |
|--------|--------|------|-------------------------------|
| 1. | 50503 | 1 | Console |
| 2. | 50504 | 1 | Gas Tank, 5 Gal. |
| 3. | 50309 | 1 | Fuel Pick-up Tube 19-3/4" |
| 4. | 10308 | 2 | Screw, Cap 1/2-20 x 1-1/2 |
| 5. | 10312 | 6 | Washer, Flat 1/2 |
| 6. | 10205 | 2 | Nut, Lock 1/2-20 |
| 7. | 10125 | 1 | Pin, Detent Ring 1/2 x 1-1/2 |
| 8. | 61108 | 2 | Grip, Hand 1"Ribbed |
| 9. | 50522 | 2 | Handle Bar 36" |
| 10. | 10923 | 2 | Knob, Fluted 3/8-16 x 2"Dia. |
| 11. | 10404 | 2 | Nut 3/8-16 |
| 12. | 50539 | 2 | Rod, Allthread 3/8-16 x 1-3/4 |
| 13. | 10124 | 2 | Pin, Hitch 1" |
| 14. | 10055 | 2 | Screw, Cap 3/8-16 x 1 |
| 15. | 10811 | 4 | Washer, Lock 3/8 |
| 16. | 10025 | 4 | Washer, Flat 3/8 |
| 17. | 50508 | 1 | Mount, Transmission |
| 18. | 10025 | 8 | Washer, Flat 3/8 |
| 19. | 10811 | 4 | Washer, Lock 3/8 |
| 20. | 10014 | 4 | Nut 3/8-24 |
| 21. | 10021 | 4 | Screw, Cap 3/8-24 x 1 |
| 22. | 10834 | 2 | Screw, Cap 1/4-20 x 1/2 |
| 23. | 50515 | 1 | Pointer, Rear 7-1/4" |
| 24. | 50507 | 2 | Bracket, Engine Mount |
| 25. | 10324 | 4 | Screw, Cap 1/2-13 x 3-1/2 |
| 26. | 10312 | 4 | Washer, Flat 1/2 |
| 27. | 10045 | 4 | Washer, Lock 1/2 |
| 28. | 10417 | 4 | Nut 1/2-13 |
| 29. | 50501 | 1 | Main Frame |
| 30. | 50538 | 1 | Guard, Lower Pulley |
| 31. | 10055 | 2 | Screw, Cap 3/8-16 x 1 |
| 32. | 10811 | 2 | Washer, Lock 3/8 |
| 33. | 10025 | 2 | Washer, Flat 3/8 |
| 34. | 57106 | 1 | Cover, Arbor |
| 35. | 10025 | 2 | Washer, Flat 3/8 |
| 36. | 10811 | 2 | Washer, Lock 3/8 |
| 37. | 10349 | 2 | Screw, Cap 3/8-16 x 4-1/2 |
| 38. | 10025 | 1 | Washer, Flat 3/8 |
| 39. | 10811 | 1 | Washer, Lock 3/8 |
| 40. | 10907 | 1 | Screw, Cap 3/8-16 x 3/4 |
| 41. | 50505 | 1 | Cover, Belt |
| 42. | 10053 | 3 | Screw, Cap 5/16-18 x 3/4 |
| 43. | 10801 | 3 | Washer, Lock 5/16 |
| 44. | 10213 | 3 | Washer, Flat 5/16 |
| 45. | 10435 | 3 | Nutsert 5/16-18 |
| 46. | 50513 | 1 | Bail, Lifting |
| 47. | 10321 | 4 | Screw, Cap 1/2-20 x 1-1/4 |
| 48. | 10312 | 4 | Washer, Flat 1/2 |
| 49. | 10045 | 4 | Washer, Lock 1/2 |
| 50. | 10072 | 4 | Nut 1/2-20 |

Fig. 2: Lifting Assembly



Parts List - Fig. 2: Lifting Assembly'

| Item # | Part # | Qty. | Description |
|--------|--------|------|-----------------------------------|
| 1. | 14023 | 1 | Knob, Ball 1/2-13 x 1-3/8 Rd. |
| 2. | 10411 | 1 | Screw, Skt. Hd. Cap 1/2-13 x 4 |
| | 50550 | 1 | Sleeve for 1/2" Capscrew |
| 3. | 80007 | 1 | Decal "Cut Control" |
| 4. | 57016 | 1 | Handwheel, Small 1/2-13 Thd. |
| 5. | 10417 | 3 | Nut 1/2-13 |
| 6. | 10426 | 2 | Washer, Spring 1/2"ID x 3/64"Thk. |
| 7. | 10312 | 1 | Washer, Flat 1/2 |
| 8. | 50409 | 1 | Allthread Linkage 1/2-13 x 22"L |
| 9. | 50412 | 1 | Linkage Lower Tube |
| 10. | 50455 | 1 | Nut 1/2-13, Special |
| 11. | 10127 | 1 | Screw, Drive 1/8 |
| 12. | 10343 | 1 | Screw, Cap 1/2-20 x 2-1/2 |
| 13. | 10205 | 1 | Nut, Lock 1/2-20 |
| 14. | 50227 | 1 | Pump, Hydraulic Electric M-301 |
| 15. | 50437 | 1 | Cable, Eye-Eye 4Ga. x 58" (Red) |
| 16. | 10054 | 4 | Nut 5/16-18 |
| 17. | 10801 | 2 | Washer, Lock 5/16 |
| 18. | 10213 | 4 | Washer, Flat 5/16 |
| 19. | 10806 | 2 | Screw, Cap 5/16-18 x 1 |
| 20. | 10717 | 2 | Nipple, Hex 1/4 NPT |
| 21. | 61116 | 2 | Valve, Flow Control |
| 22. | 10710 | 1 | Fitting, Swivel 1/4NPT x 45 |
| 23. | 50527 | 1 | Hose, Hydraulic 1/4NPT x 19"LOA |
| 24. | 10417 | 1 | Nut 1/2-13 |
| 25. | 10045 | 1 | Washer, Lock 1/2 |
| 26. | 10009 | 3 | Washer, Flat 3/4 |
| 27. | 10324 | 1 | Screw, Cap 1/2-13 x 3-1/2 |
| 28. | 61021 | 1 | Spacer 3/4"OD x 1/2"ID x 2-1/4"L |
| 29. | 61020 | 1 | Cylinder, Hydraulic |
| 30. | 10326 | 1 | Screw, Cap 5/8-11 x 3 |
| 31. | 10809 | 1 | Nut, Lock 5/8-11 |
| 32. | 10318 | 4 | Screw, Cap 3/8-16 x 3-3/4 |
| 33. | 10811 | 4 | Washer, Lock 3/8 |
| 34. | 10025 | 4 | Washer, Flat 3/8 |
| 35. | 50222 | 2 | Bearing, Ball 1"Tapped Block |
| 36. | 50502 | 1 | Fork |
| 37. | 50439 | 2 | Wheel 6 x 2-1/2 x 1"Brg. |
| 38. | 10433 | 2 | Washer, Spring 1/2"ID x 3/32" |
| 39. | 10045 | 2 | Washer, Lock 1/2 |
| 40. | 10914 | 2 | Screw, Cap 1/2-13 x 1 |

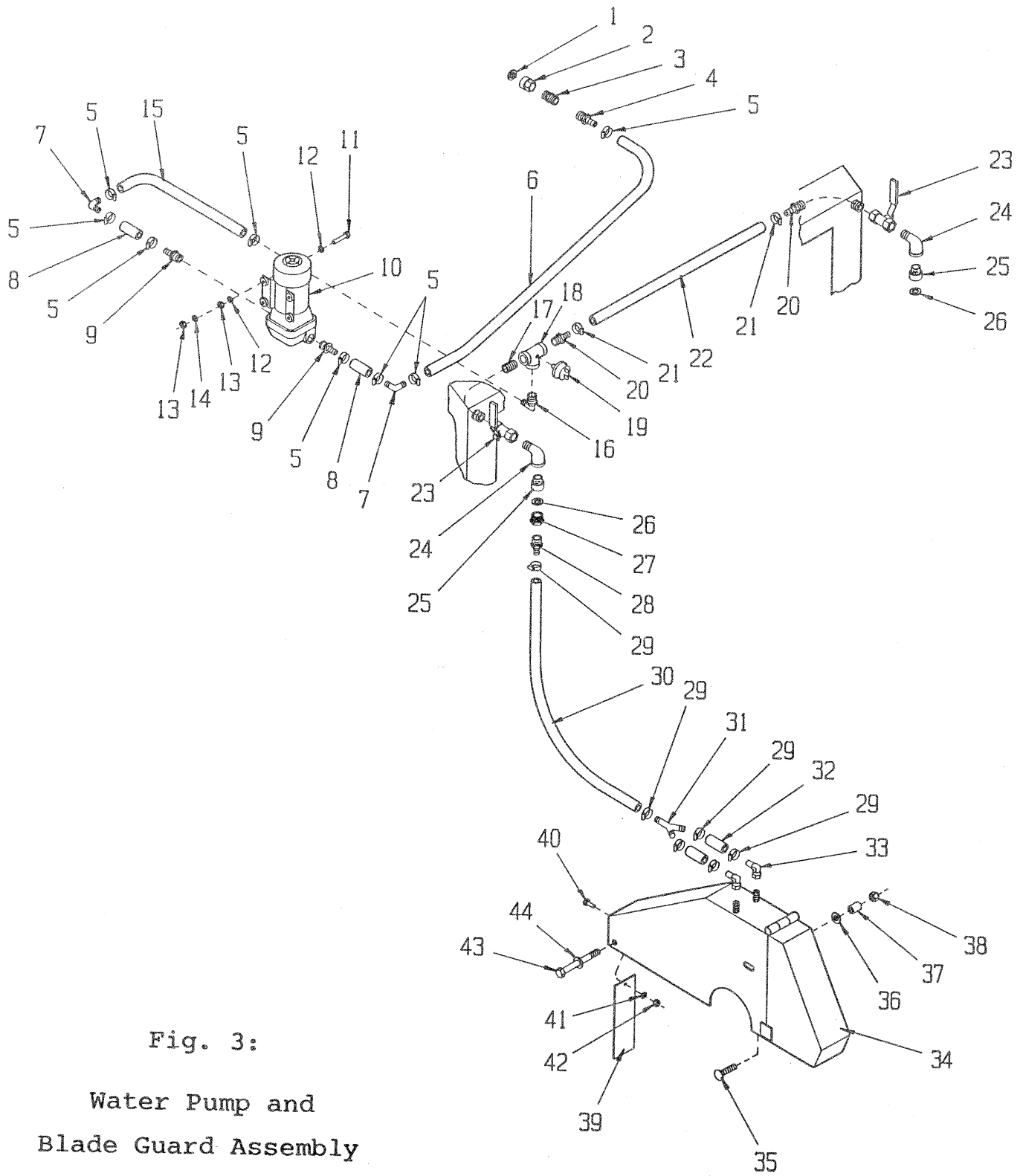


Fig. 3:

Water Pump and
Blade Guard Assembly

Parts List - Fig. 3: Water Pump and Blade Guard Assembly

| Item # | Part # | Qty. | Description |
|--------|----------|------|--------------------------------------|
| 1. | 10758 | 1 | Screen, Hose Filter |
| 2. | 50078 | 1 | Connector, Swivel Fem. 3/4H x 1/2FIP |
| 3. | 10679 | 1 | Nipple, Hex 1/2NPT |
| 4. | 10680 | 1 | Barb, 1/2Hose x 1/2MIP |
| 5. | 50069 | 8 | Clamp, Hose Adj. 5/16 to 7/8" |
| 6. | 50530 | 1 | Hose 1/2"ID x 31"L |
| 7. | 10681 | 2 | Barb Elbow 90, 1/2 x 1/2 Hose |
| 8. | 50532 | 2 | Hose 1/2"ID x 2"L |
| 9. | 10684 | 2 | Barb. 1/2Hose x 3/4"Push-In |
| 10. | 50470 | 1 | Pump, Water 12 VDC (Quad) |
| 11. | 10905 | 4 | Screw, Cap 1/4-20 x 1-1/4 |
| 12. | 10602 | 8 | Washer, Flat 1/4 |
| 13. | 10013 | 8 | Nut 1/4-20 |
| 14. | 10038 | 4 | Washer, Lock 1/4 |
| 15. | 50531 | 1 | Hose 1/2"ID x 15"L |
| 16. | 50471 | 1 | Barb Elbow 90, 1/2Hose x 1/2MIP |
| 17. | 10728 | 1 | Pipe Nipple, Close 1/2NPT |
| 18. | 50525 | 1 | Tee, Water Pressure Switch 1/2NPT |
| 19. | 50215 | 1 | Switch, Pressure, Coil Ign. M4006-1 |
| 20. | 10680 | 2 | Barb, 1/2Hose x 1/2MIP |
| 21. | 50069 | 2 | Clamp, Hose Adj. 5/16 to 7/8" |
| 22. | 50530 | 1 | Hose 1/2"ID x 23"L |
| 23. | 10711 | 2 | Valve, Ball 1/2FIP |
| 24. | 10724 | 2 | Elbow, Street 1/2NPT x 90 |
| 25. | 80021 | 2 | Connector, Swivel Fem. 3/4H x 1/2MIP |
| 26. | 10070 | 2 | Washer, Hose 3/4 |
| 27. | 10780 | 1 | Connector, Male 3/4Hose x 1/2FIP |
| 28. | 80061 | 1 | Barb, 1/2Hose x 1/2MIP Push-On |
| 29. | 50069 | 6 | Clamp, Hose Adj. 5/16 to 7/8" |
| 30. | 50529 | 1 | Hose 1/2"ID x 28"L |
| 31. | 10682 | 1 | Barbed Fitting, "Y" 1/2"Hose |
| 32. | 50532 | 2 | Hose 1/2"ID x 2"L |
| 33. | 10709 | 2 | Fitting, Swivel 90 1/4NPT |
| 34. | 57135 | 1 | Guard, Blade 24-26" |
| | or 57136 | 1 | Guard, Blade 18-20" |
| | or 57137 | 1 | Guard, Blade 14-16" |
| 35. | 10377 | 1 | Bolt, Carr. 1/2-13 x 2 |
| 36. | 10312 | 1 | Washer, Flat 1/2 |
| 37. | 50526 | 1 | Spacer, Steel 1/2"ID x 1"L |
| 38. | 10417 | 1 | Nut 1/2-13 |
| 39. | 41115 | 1 | Flap, Splash 2-1/2 x 8 |
| 40. | 10834 | 1 | Screw, Cap 1/4-20 x 1/2 |
| 41. | 10602 | 1 | Washer, Flat 1/4 |
| 42. | 10015 | 1 | Nut, Lock 1/4-20 |
| 43. | 10386 | 1 | Screw, Cap 1/2-13 x 4-1/2 |
| 44. | 10312 | 1 | Washer, Flat 1/2 |

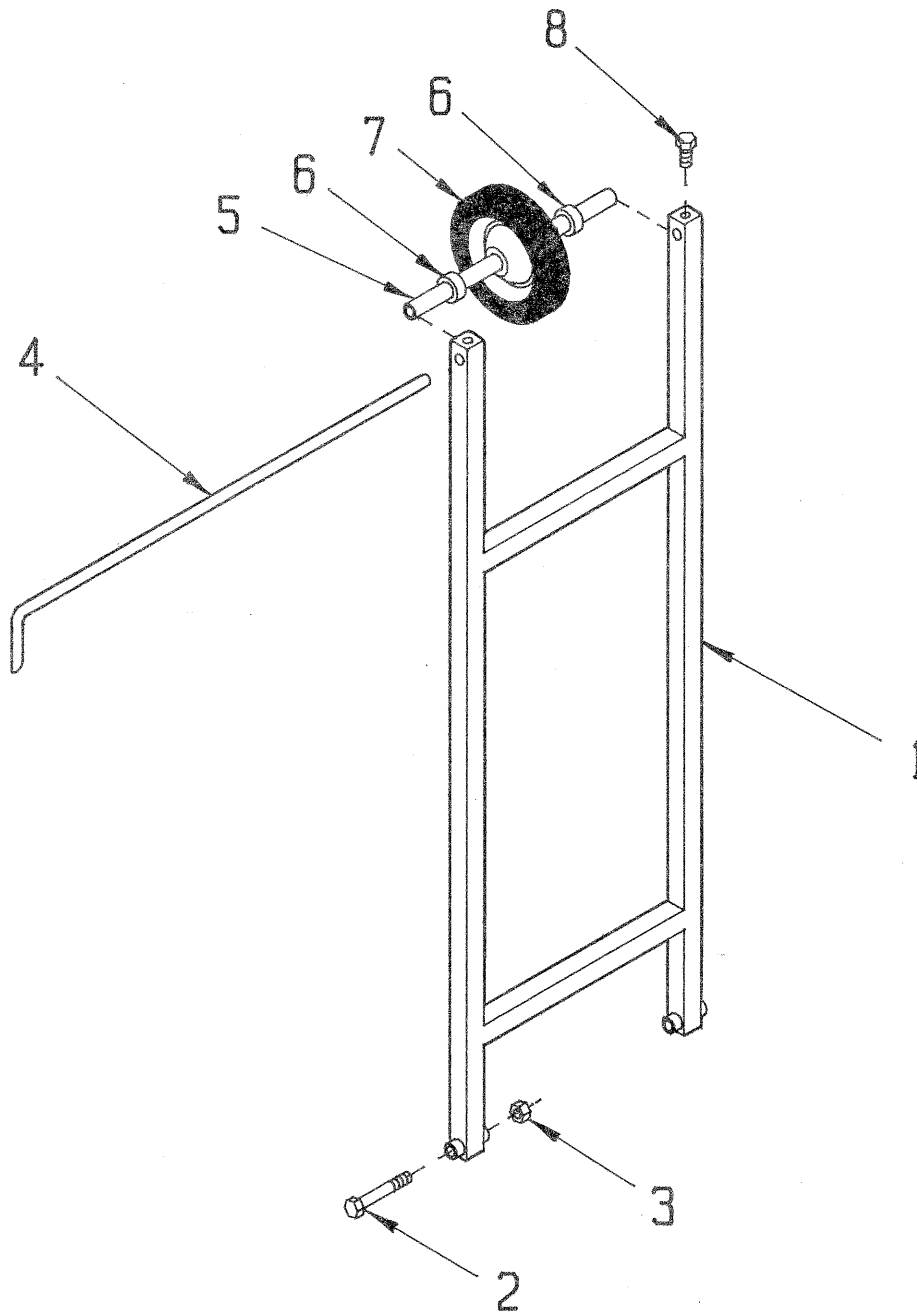


Fig. 4: Guide Bar Assembly

| Item # | Part # | Qty. | Description |
|--------|--------|------|-----------------------------|
| 1. | 57119 | 1 | Guide Bar |
| 2. | 10202 | 2 | Screw, Cap 1/2-20 x 3 |
| 3. | 10205 | 2 | Nut, Lock 1/2-20 |
| 4. | 50514 | 1 | Pointer, Front 24-1/2" |
| 5. | 57120 | 1 | Axle Tube, Guide Wheel |
| 6. | 10428 | 2 | Collar, Locking 3/4 |
| 7. | 50536 | 1 | Wheel 6 x 1-1/2 x 3/4" Bore |
| 8. | 10304 | 1 | Screw, Cap 1/2-20 x 1 |

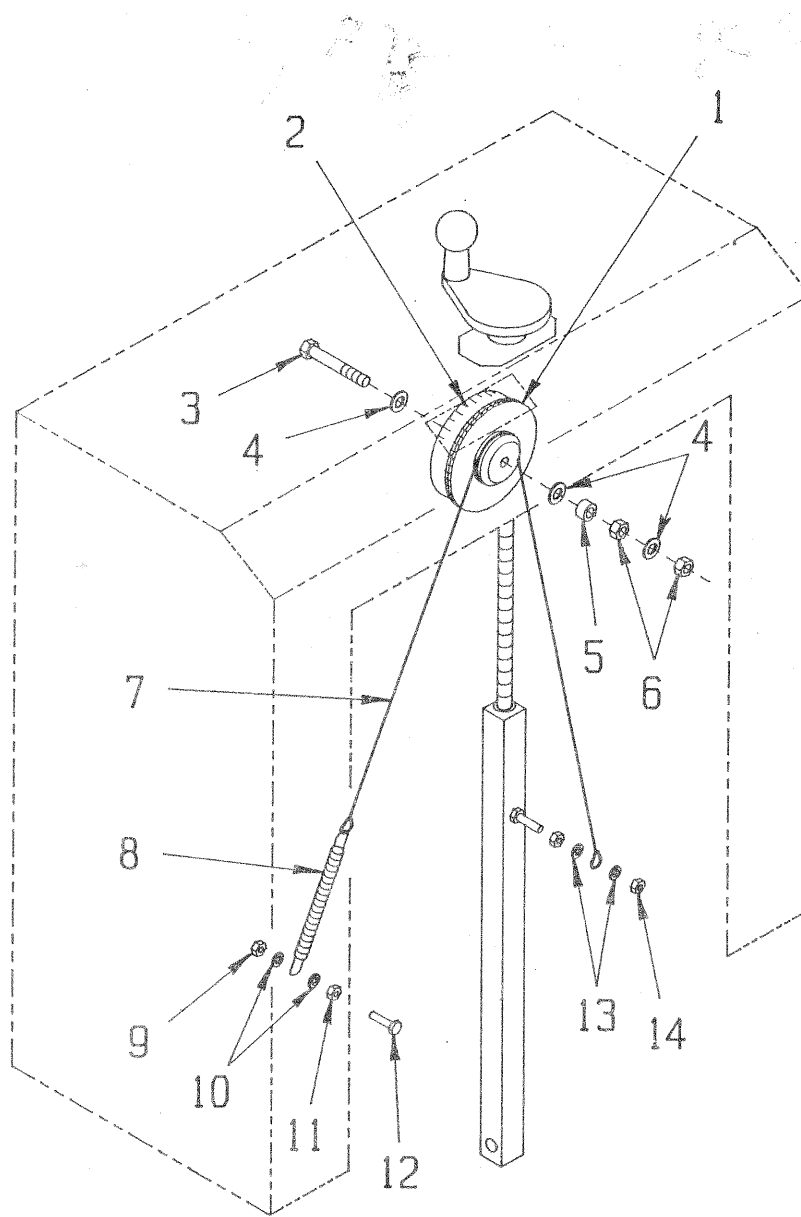


Fig. 5: Blade Depth Gauge Assembly

| Item # | Part # | Qty. | Description |
|--------|--------|------|--------------------------------|
| 1. | 57132 | 1 | Wheel, Depth Gauge |
| 2. | 50543 | 1 | Sticker, Depth Gauge |
| 3. | 10393 | 1 | Screw, Cap 3/8-24 x 2-1/2 |
| 4. | 10025 | 3 | Washer, Flat 3/8 |
| 5. | 10011 | 1 | Spacer, Steel 5/8 x 3/8 x 3/8W |
| 6. | 10004 | 2 | Nut, Lock 3/8-24 |
| 7. | 50524 | 1 | Cable, Depth Gauge 3/32 x 30"L |
| 8. | 3636 | 1 | Spring "A" |
| 9. | 10015 | 1 | Nut, Lock 1/4-20 |
| 10. | 10602 | 2 | Washer, Flat 1/4 |
| 11. | 10013 | 1 | Nut 1/4-20 |
| 12. | 10031 | 1 | Screw, Cap 1/4-20 x 1 |
| 13. | 10602 | 2 | Washer, Flat 1/4 |
| 14. | 10015 | 2 | Nut, Lock 1/4-20 |

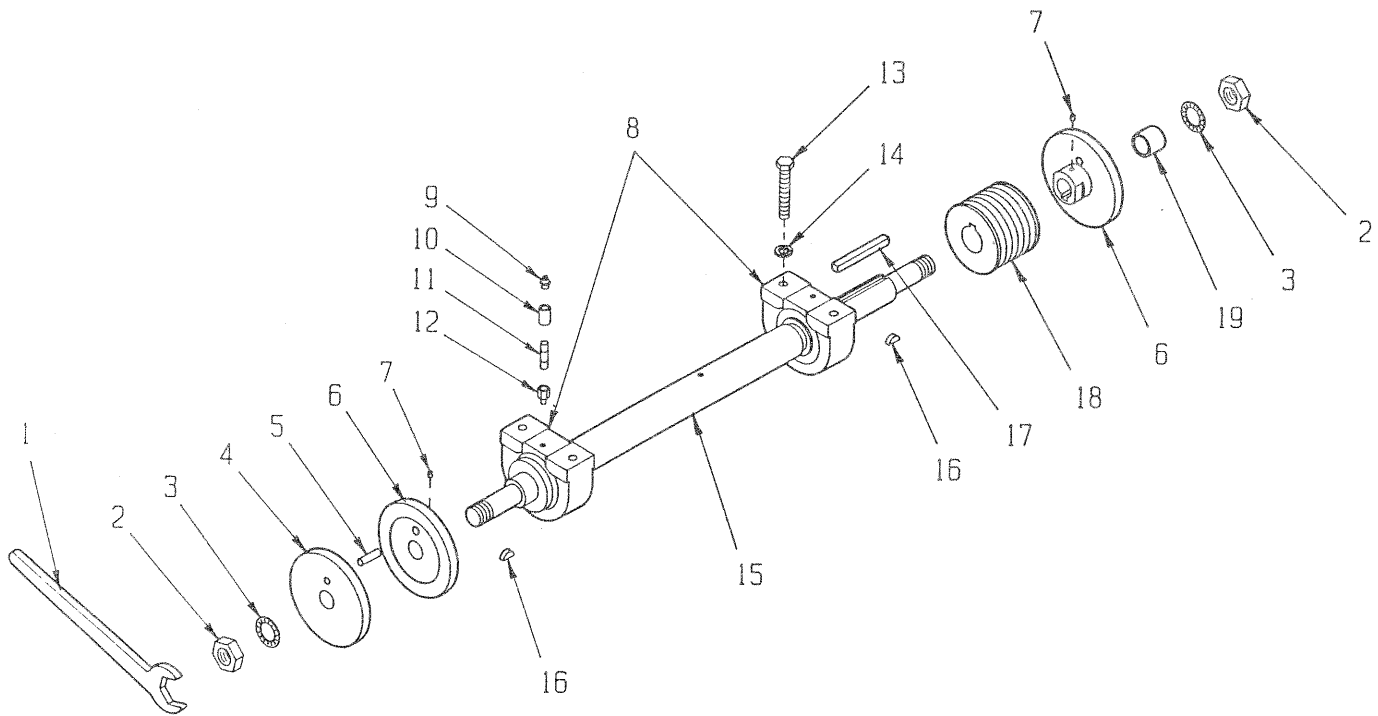


Fig. 6: Arbor Assembly

| Item # | Part # | Qty. | Description |
|--------|----------|------|--|
| 1. | 50445 | 2 | Wrench, Arbor 1-1/2" |
| 2. | 50019 | 2 | Nut, Jam 1-1/4 |
| 3. | 55009 | 2 | Washer, Int. Tooth 1" |
| 4. | 50326 | 1 | Arbor, Blade Retaining Cap 5" |
| 5. | 10129 | 1 | Pin, Dowel 3/8 x 1-1/4 |
| 6. | 50427 | 2 | Arbor, Backing Plate 5" |
| 7. | 10372 | 2 | Screw, Set 1/4-28 x 1/4 |
| 8. | 50460 | 2 | Bearing, Ball 1-1/2"TB W/Skwezloc |
| 9. | 10953 | 2 | Fitting, Grease 1/8 NPT |
| 10. | 10698 | 2 | Pipe Coupling 1/8 NPT |
| 11. | 10798 | 2 | Pipe Nipple 1/8NPT x 1-1/2" |
| 12. | 50541 | 2 | Adapter, Grease Fitting 1/8FPT x 1/4-28 |
| 13. | 10340 | 4 | Screw, Cap 1/2-13 x 3 Full Thd. |
| 14. | 10045 | 4 | Washer, Lock 1/2 |
| 15. | 50540 | 1 | Arbor Shaft 31"L |
| 16. | 10117 | 2 | Key, Woodruff 1/4 x 3/4 |
| 17. | 10074 | 1 | Key 3/8 Sq. x 3-1/2 |
| 18. | 10511 | 1 | Sheave 3.65"OD 6Gr.3V 1-7/16"B |
| | or 10512 | 1 | Sheave 4.80"OD 6Gr.3V 1-7/16"B (See Fig. 7 Chart) |
| 19. | 50112 | 1 | Spacer, Arbor 1"ID x 1"L |

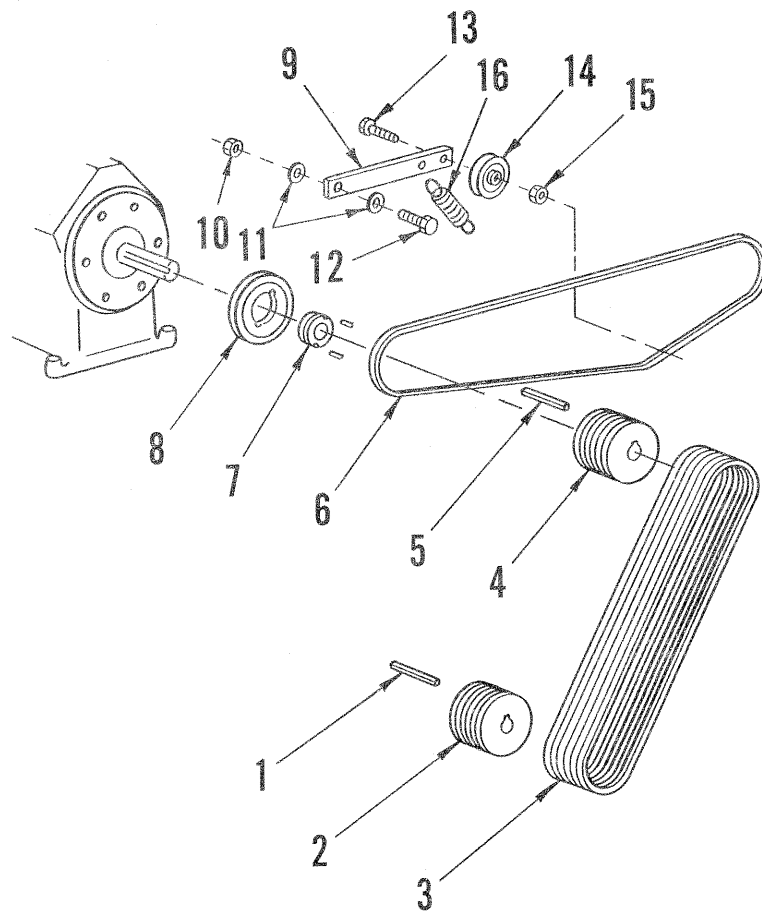
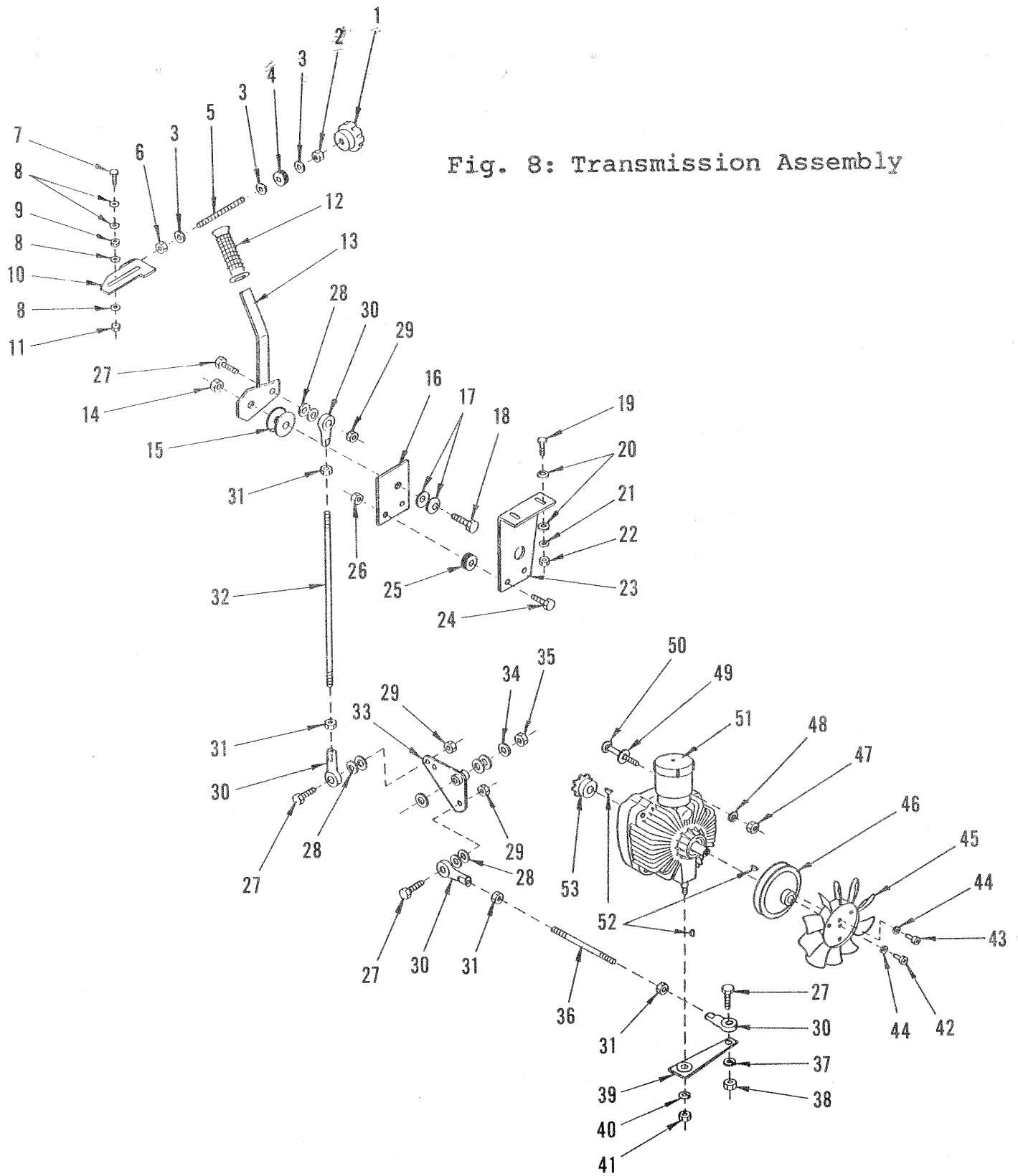


Fig. 7: Belt Drive Assembly

| Item # | Part # | Qty. | Description | Item # | Part # | Qty. | Description |
|----------|--------|------|-------------------------|--------|--------|------|----------------------------|
| 1. | 10074 | 1 | Key 3/8 Sq. x 3-1/2 | 7. | 10531 | 1 | Bushing, Taper-Lock 1-7/16 |
| 2. | 10511 | 1 | Sheave 3.65"OD x 6Gr.3V | 8. | 10528 | 1 | Sheave 4.15"OD x 1Gr.AB |
| or 10512 | 1 | 1 | Sheave 4.80"OD x 6Gr.3V | 9. | 50544 | 1 | Arm, Idler |
| 3. | 10228 | 6 | Belt 3VX-450 | 10. | 10205 | 1 | Nut, Lock 1/2-20 |
| or 10235 | 6 | 6 | Belt 3VX-475 | 11. | 10312 | 2 | Washer, Flat 1/2 |
| 4. | 10510 | 1 | Sheave 2.80"OD x 6Gr.3V | 12. | 10322 | 1 | Screw, Cap 1/2-20 x 2 |
| or 10511 | 1 | 1 | Sheave 3.65"OD x 6Gr.3V | 13. | 10816 | 1 | Screw, Cap 3/8-24 x 1-1/2 |
| or 10512 | 1 | 1 | Sheave 4.80"OD x 6Gr.3V | 14. | 50115 | 1 | Pulley, Idler 3"OD |
| 5. | 10074 | 1 | Key 3/8 Sq. x 3-1/2 | 15. | 10004 | 1 | Nut, Lock 3/8-24 |
| 6. | 10261 | 1 | Belt AP-56 | 16. | 50074 | 1 | Spring, Ext. 1"OD x 2-1/2 |
| or 10267 | 1 | 1 | Belt AP-57 | | | | |

| BLADE SIZES & BELT DRIVE SPECIFICATIONS | | | | | | |
|---|---------------------------|-----------------------------|-------------------------------|------------------------------|----------------------------|-----------------------------|
| BLADE SIZE | BLADE SPEED UNDER LOAD | ENGINE R.P.M. UNDER LOAD | ENGINE SHEAVE DIA. Item #4 | ARBOR SHEAVE DIA. Item #2 | ARBOR BELT SIZE Item #3 | TRANS. BELT SIZE Item #6 |
| 24-26" | 2091 | 2750 | 3.65" | 4.80" | 3VX-475 | AP-57 |
| 18-20" | 2110 | 2750 | 2.80" | 3.65" | 3VX-450 | AP-56 |
| 14-18" | 2750 | 2750 | 3.65" | 3.65" | 3VX-475 | AP-56 |
| 14" | 3616 | 2750 | 4.80" | 3.65" | 3VX-475 | AP-57 |

Fig. 8: Transmission Assembly



Parts List - Fig. 8: Transmission Assembly

| Item # | Part # | Qty. | Description |
|--------|--------|------|----------------------------------|
| 1. | 10923 | 1 | Knob, Fluted 3/8-16 x 2"Dia |
| 2. | 10404 | 1 | Nut 3/8-16 |
| 3. | 10025 | 3 | Washer, Flat 3/8 |
| 4. | 56018 | 1 | Bushing, Rubber 3/8ID x 1/4Thk. |
| 5. | 50111 | 1 | Rod, Allthread 3/8-16 x 4-1/2 |
| 6. | 10810 | 1 | Nut, Lock 3/8-16 |
| 7. | 10031 | 2 | Screw, Cap 1/4-20 x 1 |
| 8. | 10602 | 8 | Washer, Flat 1/4 |
| 9. | 10013 | 2 | Nut 1/4-20 |
| 10. | 50418 | 1 | Detent Plate, Drive Lever |
| 11. | 10015 | 2 | Nut, Lock 1/4-20 |
| 12. | 10927 | 1 | Grip, Hand 3/4" Wafer |
| 13. | 50461 | 1 | Lever, "Drive Control" |
| 14. | 10205 | 1 | Nut, Lock 1/2-20 |
| 15. | 50428 | 2 | Washer, Fiber 2-1/4 x 1/2 x 1/16 |
| 16. | 50417 | 1 | Plate, Drive Lever Pressure |
| 17. | 10426 | 2 | Washer, Spring 1/2"ID x 3/64"Thk |
| 18. | 10321 | 1 | Screw, Cap 1/2-20 x 1-1/4 |
| 19. | 10031 | 2 | Screw, Cap 1/4-20 x 1 |
| 20. | 10602 | 4 | Washer, Flat 1/4 |
| 21. | 10038 | 2 | Washer, Lock 1/4 |
| 22. | 10013 | 2 | Nut 1/4-20 |
| 23. | 50462 | 2 | Bracket, Drive Lever |
| 24. | 10309 | 2 | Screw, Cap 3/8-24 x 1-1/4 |
| 25. | 10034 | 2 | Bushing, Rubber 3/8ID x 5/8Thk. |
| 26. | 10004 | 2 | Nut, Lock 3/8-24 |
| 27. | 10309 | 4 | Screw, Cap 3/8-24 x 1-1/4 |
| 28. | 10025 | 6 | Washer, Flat 3/8 |
| 29. | 10004 | 3 | Nut, Lock 3/8-24 |
| 30. | 10919 | 4 | Rod End, Female 3/8-24 |
| 31. | 10014 | 4 | Nut 3/8-24 |
| 32. | 50516 | 1 | Linkage, Rod 3/8 x 15-1/4"L |
| 33. | 57123 | 1 | Bellcrank, Drive Control |
| 34. | 10312 | 4 | Washer, Flat 1/2 |
| 35. | 10407 | 1 | Nut, Lock 1/2-13 |
| 36. | 50420 | 1 | Linkage, Rod 3/8 x 5-3/4"L |
| 37. | 10811 | 1 | Washer, Lock 3/8 |
| 38. | 10014 | 1 | Nut 3/8-24 |
| 39. | 50422 | 1 | Trans. Control Arm |
| 40. | 10811 | 1 | Washer, Lock 3/8 |
| 41. | 10404 | 1 | Nut 3/8-16 |
| 42. | 10390 | 1 | Screw, Skt. Hd. 1/4-20 x 5/8 |
| 43. | 10391 | 1 | Screw, Skt. Hd. 1/4-28 x 5/8 |
| 44. | 10038 | 2 | Washer, Lock 1/4 |
| 45. | 50266 | 1 | Fan Blade 7", Trans. |
| 46. | 50062 | 1 | Sheave, Trans. 4"OD x 1 Gr. |
| 47. | 10404 | 4 | Nut 3/8-16 |
| 48. | 10811 | 4 | Washer, Lock 3/8 |
| 49. | 10040 | 4 | Washer, Garret 17/32 |
| 50. | 10909 | 4 | Bolt, Carr. 3/8-16 x 3 |
| 51. | 50061 | 1 | Transmission, Hydrostatic |
| 52. | 50071 | 3 | Key, Woodruff 1/8 x 1/2 (#3) |
| 53. | 50048 | 1 | Sprocket, #3511 x .67"Bore |

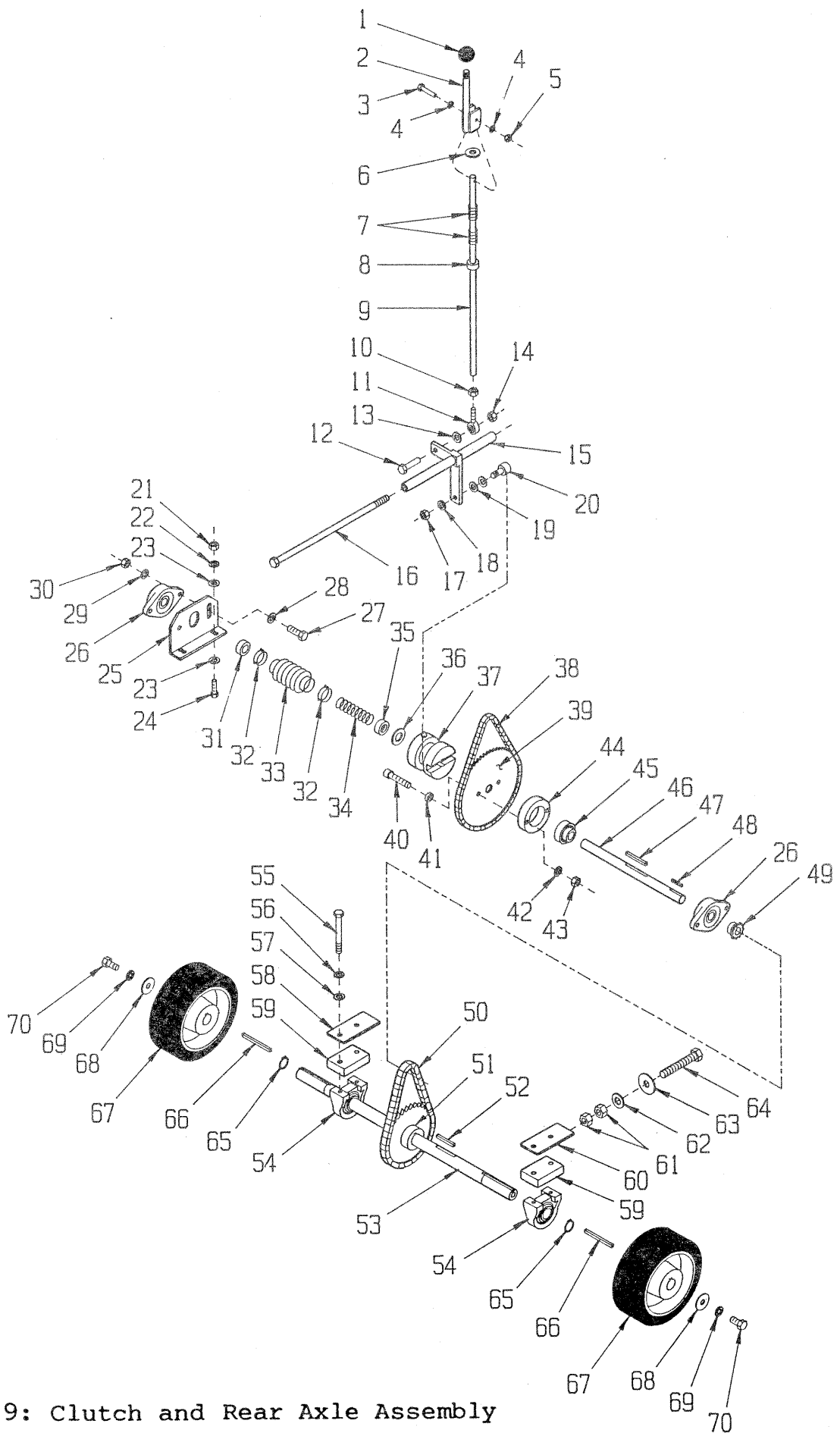
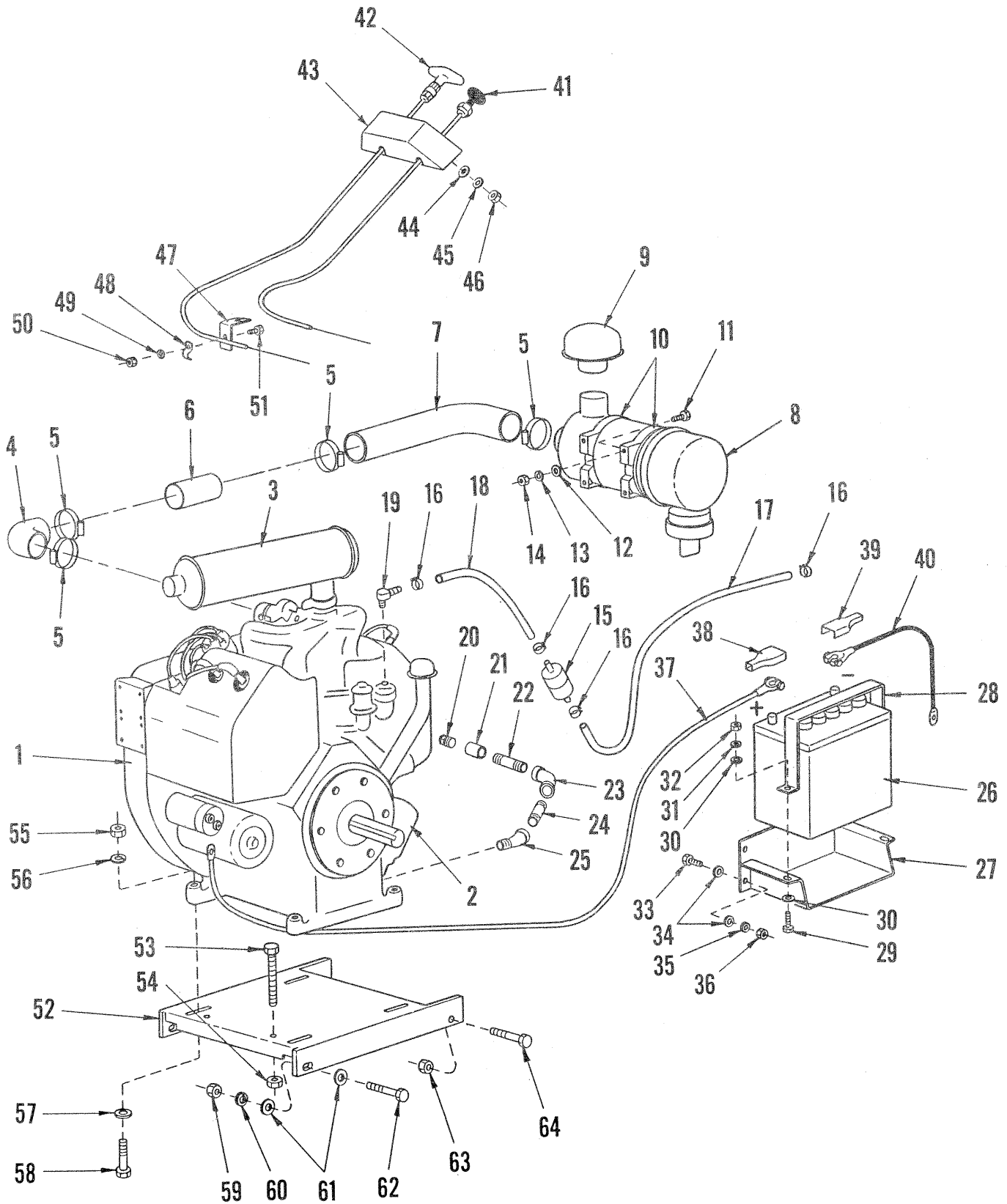


Fig. 9: Clutch and Rear Axle Assembly

Parts List - Fig. 9: Clutch and Rear Axle Assembly

| Item # | Part # | Qty. | Description |
|--------|--------|------|--|
| 1. | 14023 | 1 | Knob, Ball 1/2-13 x 1-3/8"Rd. |
| 2. | 57029 | 1 | Lever, Clutch |
| 3. | 10905 | 1 | Screw, Cap 1/4-20 x 1-1/4 |
| 4. | 10602 | 2 | Washer, Flat 1/4 |
| 5. | 10015 | 1 | Nut, Lock 1/4-20 |
| 6. | 57030 | 1 | Washer, Clutch Lever |
| 7. | 10921 | 2 | Spring, Comp. .72"OD x 1-1/4"CL |
| 8. | 10431 | 1 | Collar, Locking 1/2 |
| 9. | 50517 | 1 | Linkage, Clutch 20-1/4" |
| 10. | 10014 | 1 | Nut 3/8-24 |
| 11. | 3605 | 1 | Rod End, Male 3/8-24 |
| 12. | 10309 | 1 | Screw, Cap 3/8-24 x 1-1/4 |
| 13. | 10040 | 1 | Washer, Garret 17/32 |
| 14. | 10004 | 1 | Nut, Lock 3/8-24 |
| 15. | 50450 | 1 | Bell Crank, Clutch |
| 16. | 10421 | 1 | Screw, Cap 1/2-13 x 13 |
| 17. | 10014 | 1 | Nut 3/8-24 |
| 18. | 10811 | 1 | Washer, Lock 3/8 |
| 19. | 10025 | 2 | Washer, Flat 3/8 |
| 20. | 10924 | 1 | Cam Follower Brg. 3/4" x 3/8-24 Thd. |
| 21. | 10014 | 2 | Nut 3/8-24 |
| 22. | 10811 | 2 | Washer, Lock 3/8 |
| 23. | 10025 | 4 | Washer, Flat 3/8 |
| 24. | 10014 | 2 | Screw, Cap 3/8-24 x 1 |
| 25. | 50509 | 1 | Mount, Jackshaft Bearing |
| 26. | 50049 | 2 | Bearing, Ball 3/4" 2-Hole Flange |
| 27. | 10309 | 4 | Screw, Cap 3/8-24 x 1-1/4 |
| 28. | 10025 | 4 | Washer, Flat 3/8 |
| 29. | 10811 | 4 | Washer, Lock 3/8 |
| 30. | 10014 | 4 | Nut 3/8-24 |
| 31. | 10428 | 2 | Collar, Locking 3/4" |
| 32. | 10768 | 2 | Clamp, Hose Spring 1-1/4" |
| 33. | 10930 | 1 | Bellows |
| 34. | 10922 | 1 | Spring, Comp. .968"OD x 3-1/2" |
| 35. | 57044 | 1 | Cup, Clutch Spring |
| 36. | 10009 | 1 | Washer, Flat 3/4 |
| 37. | 50477 | 1 | Clutch, Dog Sub-Assembly (Includes Parts Below) |
| | 57042 | 1 | Clutch, Dog Block |
| | 57043 | 1 | Collar, Locking 2" |
| | 3695 | 1 | Seal, Oil .750 x 1.375 x .250 |
| | 10808 | 1 | Fitting, Grease 1/4-28 Straight |
| 38. | 64032 | 1 | Chain #35 x 24-1/2"LOA |
| 39. | 50476 | 1 | Sprocket #35A60 x 3/4B |
| 40. | 10354 | 2 | Screw, Skt.HD 3/8-24 x 1-3/4 |
| 41. | 10113 | 2 | Spacer, Steel 5/8"OD x 3/8"ID x 3/16"W |
| 42. | 10811 | 2 | Washer, Lock 3/8 |
| 43. | 10014 | 2 | Nut 3/8-24 |
| 44. | 57039 | 1 | Clutch Bearing Carrier |
| 45. | 57038 | 1 | Bearing, Ball 3/4" (SL-12) |
| 46. | 50518 | 1 | Jackshaft, Clutch 11-1/2" |
| 47. | 10307 | 1 | Key 1/4Sq. x 2-1/4 |
| 48. | 50523 | 1 | Key 3/16Sq. x 1-1/8 |
| 49. | 50436 | 1 | Sprocket #40B10 x 3/4"Bore |
| 50. | 50542 | 1 | Chain #40 x 25"LOA |
| 51. | 61126 | 1 | Sprocket #40B34 x 1"Bore |
| 52. | 10115 | 1 | Key 1/4Sq. x 2 |
| 53. | 50519 | 1 | Axle Shaft 1"Rd. x 25" |
| 54. | 50222 | 2 | Bearing Ball 1" Tapped Block |
| 55. | 10318 | 4 | Screw, Cap 3/8-16 x 3-3/4 |
| 56. | 10811 | 4 | Washer, Lock 3/8 |
| 57. | 10025 | 4 | Washer, Flat 3/8 |
| 58. | 50511 | 1 | Shim, Axle Bearing |
| 59. | 50510 | 2 | Spacer, Bearing |
| 60. | 50512 | 1 | Shim, Axle Bearing W/Adjuster |
| 61. | 10417 | 1 | Nut 1/2-13 |
| 62. | 10312 | 1 | Washer, Flat 1/2 |
| 63. | 10433 | 1 | Washer, Spring 1/2"ID x 3/32"Thk. |
| 64. | 10340 | 1 | Screw, Cap 1/2-13 x 3 Full Thd. |
| 65. | 10906 | 2 | Snap Ring, Ext. 1" |
| 66. | 10103 | 2 | Key 1/4Sq. x 3-1/4 |
| 67. | 61065 | 2 | Wheel 8 x 3 x 1"Bore |
| 68. | 10433 | 2 | Washer, Spring 1/2"ID x 3/32"Thk |
| 69. | 10045 | 2 | Washer, Lock 1/2 |
| 70. | 10914 | 2 | Screw, Cap 1/2-13 x 1 |

Fig. 10: Engine Grouping



Parts List - Fig. 10: Engine Grouping

| Item # | Part # | Qty. | Description |
|--------|---------|------|------------------------------------|
| 1. | 31401 | 1 | Engine, Wisconsin 35 HP W4-1770 |
| 2. | 15118 | 1 | Filter, Oil |
| 3. | 10622 | 1 | Muffler WD-72 |
| 4. | 10638 | 1 | Hose Elbow, Reducer 2" to 1-3/4" |
| 5. | 10745 | 4 | Clamp, Hose Adj. 1-7/8 to 2-3/4" |
| 6. | 50545 | 1 | Pipe 2"OD x 4"L |
| 7. | 50537 | 1 | Hose Elbow, Air Filter 2"ID |
| 8. | 15112 | 1 | Air Cleaner Assy., Vacuator |
| | 15115 | 1 | Element, Air Filter |
| 9. | 15113 | 1 | Hood, Vacuator Air Inlet |
| 10. | 15114 | 1 | Mounting Bands (Pair) |
| 11. | 10053 | 4 | Screw, Cap 5/16-18 x 3/4 |
| 12. | 10213 | 4 | Washer, Flat 5/16 |
| 13. | 10801 | 4 | Washer, Lock 5/16 |
| 14. | 10054 | 4 | Nut 5/16-18 |
| 15. | 15116 | 1 | Filter, Fuel 1/4" In-Line |
| 16. | 10763 | 4 | Clamp, Hose Spring-Type 7/16" |
| 17. | 50546 | 1 | Hose, Fuel 1/4"ID x 23"L |
| 18. | 50547 | 1 | Hose, Fuel 1/4"ID x 9"L |
| 19. | 10771 | 1 | Barb Elbow 90, 1/4Hose x 1/8MIP |
| 20. | 10754 | 1 | Pipe Plug 3/8 NPT |
| 21. | 10753 | 1 | Pipe Coupling 3/8 NPT |
| 22. | 10751 | 1 | Pipe Nipple 3/8NPT x 2-1/2 |
| 23. | 10760 | 1 | Elbow, Female 3/8NPT x 45 |
| 24. | 10750 | 1 | Pipe Nipple 3/8NPT x 6 |
| 25. | 10752 | 1 | Elbow, Street 3/8NPT x 45 |
| 26. | 50321 | 1 | Battery 12 Volt/400 CCA |
| 27. | 57107 | 1 | Tray, Battery |
| 28. | 57057 | 1 | Clamp, Battery Hold-Down |
| 29. | 10606 | 2 | Screw, Cap 5/16-18 x 1-1/4 |
| 30. | 10213 | 4 | Washer, Flat 5/16 |
| 31. | 10801 | 2 | Washer, Lock 5/16 |
| 32. | 10054 | 2 | Nut 5/16-18 |
| 33. | 10021 | 4 | Screw, Cap 3/8-24 x 1 |
| 34. | 10025 | 8 | Washer, Flat 3/8 |
| 35. | 10811 | 4 | Washer, Lock 3/8 |
| 36. | 10014 | 4 | Nut 3/8-24 |
| 37. | 57055 | 1 | Cable, Battery 4 Ga. x 53" (Red) |
| 38. | 10928 | 1 | Insulator, Bat. Term. Pos. (Red) |
| 39. | 10929 | 1 | Insulator, Bat. Term. Neg. (Black) |
| 40. | 50323B | 1 | Cable, Battery 4 Ga. x 12" (Black) |
| 41. | 50443 | 1 | Cable, Choke (30" Approx.) |
| 42. | 50432 | 1 | Cable, Throttle (32" Approx.) |
| 43. | 50520 | 1 | Console, Mini (Throttle & Choke) |
| 44. | 10213 | 2 | Washer, Flat 5/16 |
| 45. | 10801 | 2 | Washer, Lock 5/16 |
| 46. | 10054 | 2 | Nut 5/16-18 |
| 47. | 50429 | 1 | Bracket, Throttle Cable Mounting |
| 48. | 10954 | 1 | Clip, Conduit |
| 49. | 10602 | 1 | Washer, Flat 1/4 |
| 50. | 10015 | 1 | Nut, Lock 1/4-20 |
| 51. | 10834 | 1 | Screw, Cap 1/4-20 x 1/2 |
| 52. | 50506 | 1 | Mount, Engine |
| 53. | 10373 | 2 | Screw, Cap 1/2-13 x 5" Full Thd. |
| 54. | 10417 | 1 | Nut 1/2-13 |
| 55. | 10072 | 4 | Nut 1/2-20 |
| 56. | 10045 | 4 | Washer, Lock 1/2 |
| 57. | 10312 | 4 | Washer, Flat 1/2 |
| 58. | 10343 | 4 | Screw, Cap 1/2-20 x 2-1/2 |
| 59. | 10417 | 2 | Nut 1/2-13 |
| 60. | 10045 | 2 | Washer, Lock 1/2 |
| 61. | 10312 | 4 | Washer, Flat 1/2 |
| 62. | 10356 | 2 | Screw, Cap 1/2-13 x 1-1/2 |
| 63. | 10072 | 2 | Nut, Lock 1/2-20 |
| 64. | 10321 | 1 | Screw, Cap 1/2-20 x 1-1/4 |
| | & 10322 | 1 | Screw, Cap 1/2-20 x 2 |

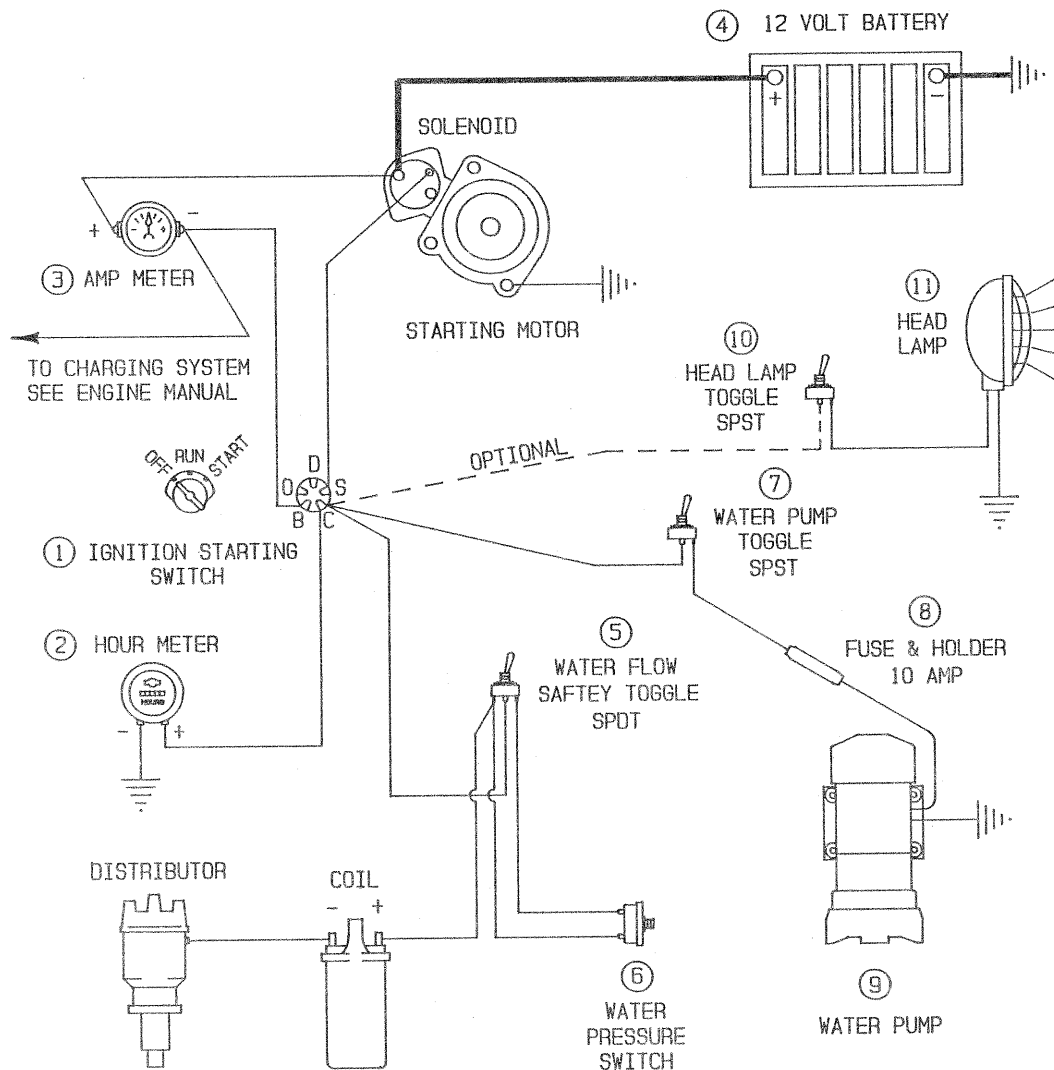


Fig. 11: Wiring Diagram

| Item # | Part # | Qty. | Description |
|--------|--------|------|---------------------------------|
| ① | 10632 | 1 | Switch, Ignition Starting |
| ② | 10637 | 1 | Meter, Hour |
| ③ | 10631 | 1 | Meter, 30 Amp |
| ④ | 50321 | 1 | Battery 12 Volt/400 C.C.A. |
| ⑤ | 10619 | 1 | Switch, Toggle SPDT |
| ⑥ | 50215 | 1 | Switch, Pressure, Coil Ignition |
| ⑦ | 10633 | 1 | Switch, Toggle SPST |
| ⑧ | 50447 | 1 | Fuse & Holder. 10 Amp |
| ⑨ | 50470 | 1 | Pump, Water 12 VDC |
| ⑩ | 10633 | 1 | Switch, Toggle SPST (Optional) |
| ⑪ | 51045 | 1 | Lamp, Head 12 VDC (Optional) |