

REVISED STARTING  
SERIAL #1662

# PARTS LIST MANUAL MODEL SS35-35W



**Concrete/Asphalt Saw**  
**Part No. 31400**



100 Thomas Johnson Drive, Frederick, MD 21702-4600 USA  
Phone (301) 663-1600 • 1-800-638-3326  
Fax (301) 663-1607 • 1-800-447-3326  
Website: [www.edcoinc.com](http://www.edcoinc.com) • Email: [sales@edcoinc.com](mailto:sales@edcoinc.com)

Printed in USA  
©2004

READ AND UNDERSTAND THE OPERATORS INSTRUCTION MANUAL THOROUGHLY BEFORE ATTEMPTING TO OPERATE THIS EQUIPMENT. Death or serious injury could occur if this machine is used improperly.



## SAFETY MESSAGES



The safety instructions are preceded by a graphic alert message of DANGER, WARNING, or CAUTION.



Indicates an imminent hazard which, if not avoided, will result in death or serious injury.



Indicates an imminent hazard which, if not avoided, can result in death or serious injury.



Indicates hazards which, if not avoided, could result in serious injury and or damage to the equipment.

## GASOLINE

Powered Equipment



- Do not operate gasoline powered equipment without adequate ventilation. Carbon monoxide is an invisible, odorless gas that can kill.

## ELECTRICAL

Powered Equipment



- ELECTRICAL HAZARD** - Be sure equipment is properly grounded. Failure to comply could kill or result in serious injury.



The engine exhaust from this product contains chemicals known to the State of California to cause cancer, birth defects or other reproductive harm.

## GENERAL INSTRUCTIONS



- You must read and understand the operators instruction manual and all other manuals associated with this machine. For your safety and the safety of others around you, it is extremely important to fully understand how to operate this machine in the way it was intended. Different model machines or older/newer versions of the same model may have different parts and controls that you need to understand. If instructions are not readable or available DO NOT USE this machine and contact the factory for a replacement Manual.
- You must be able to physically handle the bulk weight and power of this machine. If not properly controlled this machine can cause death or serious injury.
- Do not operate this machine in an impaired mental state. You must be able to exercise good judgement and reactions to maintain a safe working environment.
- This is a "one person" machine which means only one operator can be operating the machine at any one time. For the safety of others, maintain a safe operating distance to other personnel. Your work area should be defined and appropriately marked so bystanders and coworkers do not stand or walk near this machine and end up seriously injured by flying debris or exposing them to harmful noise or dust.
- This equipment is for Commercial use. Although this is a "one person" machine your work team should understand how to shut this machine off and quickly get medical help if an accident strikes the operator.
- Keep all guards in place during operation. The guards are to provide protection from inadvertent contact with dangerous moving parts, pinch points, or hot surfaces.
- Wear appropriate Personal Protective Equipment (PPE) including safety glasses, safety boots, work gloves, respiratory protection, hearing protection, and head protection. Do not wear loose clothing that can get tangled in moving parts. Failure to do so could result in dismemberment or death. **Wear an approved respirator when removing hazardous materials or when grinding/cutting dry materials. Some dust particles such as concrete dust can contain silicate particles which can cause silicosis (a very serious lung disease). Contact NIOSH or OSHA for further details. When wet grinding/cutting, avoid contact with the concrete/asphalt slurry which can cause serious skin irritations.**
- You must maintain this machine per the maintenance schedule in the operator manual. Remember before adjusting, servicing, or fueling this machine, disconnect the source of power to the machine by disconnecting the spark plug (Gas models), or by unplugging the electrical power cord (electric models) or air hose (Pneumatic models) AT THE MACHINE so you can assure yourself it remains unplugged while you are working on it. Do not modify this machine. Use only genuine EDCO parts and accessories. Repairs and service should be performed by approved EDCO dealers or authorized technicians.
- You should look carefully around the area before you begin work so you can identify potential hazards such as deck inserts, pipes, columns, openings, electrical cords or outlets, or any other objects protruding from the slab surface.
- This machine has no brain so you must use your own. There is no substitute for safety. The safety decals on the machine are to serve as a reminder for information you must already know before you begin using this machine. Take a moment to reread the safety decals each time you use the machine. If your machine is missing any decals, contact the factory for a replacement (EDCO 1-800-638-3326).

# PARTS LIST MANUAL

## EDCO MODEL SS-35

Section	Page Number
Safety Messages / General Instructions .....	2
How To Order Replacement Parts .....	3
Illustration 1: Frame Assembly .....	4,5
Illustration 2: Lifting Assembly .....	6,7
Illustration 3: Water Pump & Blade Guard Assembly .....	8,9
Illustration 4: Guide Bar Assembly .....	10
Illustration 5: Blade Depth Gauge Assembly .....	11
Illustration 6: Arbor Assembly .....	12
Illustration 7: Belt Drive Assembly .....	13
Illustration 8: Transmission Assembly .....	14,15
Illustration 9: Clutch & Rear Axle Assembly .....	16,17
Illustration 10: Engine Grouping .....	18,19
Illustration 11: Engine Mount Grouping .....	20,21
Illustration 12: Instrument Panel Grouping .....	22,23
Limited Equipment Warranty .....	back cover

### HOW TO ORDER REPLACEMENT PARTS

- To insure product safety and reliability, always use genuine EDCO replacement parts when making repairs to the equipment.
- When calling for parts, specify the MODEL and SERIAL NUMBER of the machine which can be found on the NAME PLATE. Keep that information in the space provided. In addition to this information, give part number, description and quantity as listed on the parts list to your parts representative.
- Please note: Due to improvements and changes in the equipment, the illustrations shown may be different than the actual machine.

### FILL IN INFORMATION BELOW

Date of Purchase \_\_\_\_\_

Name of Machine \_\_\_\_\_

Model # \_\_\_\_\_

Serial # \_\_\_\_\_

Belt Size(s) \_\_\_\_\_

Toll Free: 1-800-638-3326

FAX: 1-800-447-3326

email: [sales@edcoinc.com](mailto:sales@edcoinc.com)

[www.edcoinc.com](http://www.edcoinc.com)



100 Thomas Johnson Drive, Frederick, MD 21702-4600 USA

Phone (301) 663-1600 • 1-800-638-3326

Fax (301) 663-1607 • 1-800-447-3326

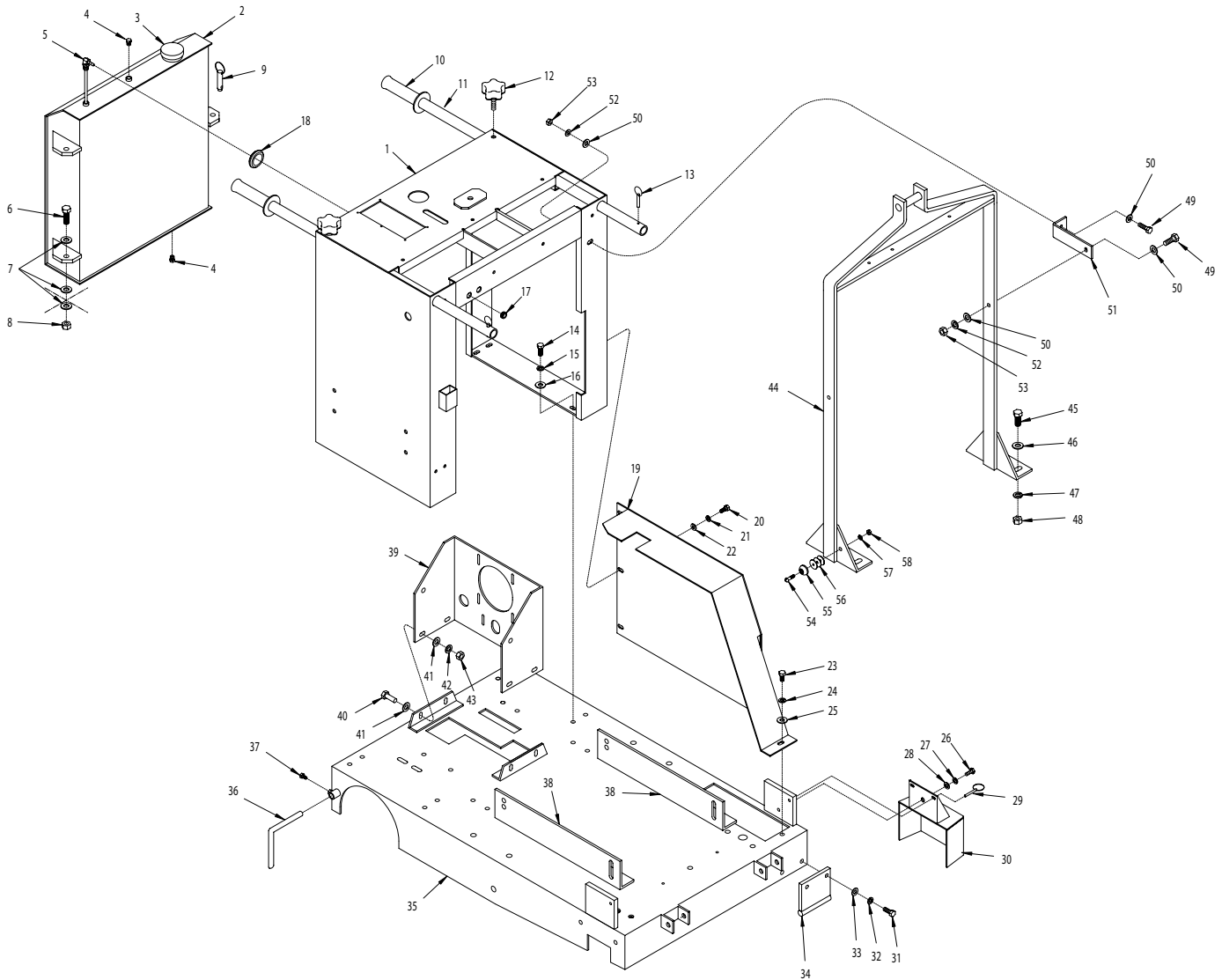
Website: [www.edcoinc.com](http://www.edcoinc.com) • Email: [sales@edcoinc.com](mailto:sales@edcoinc.com)

Printed in USA

©2004

Page 3

**ILLUSTRATION 1 : FRAME ASSEMBLY**



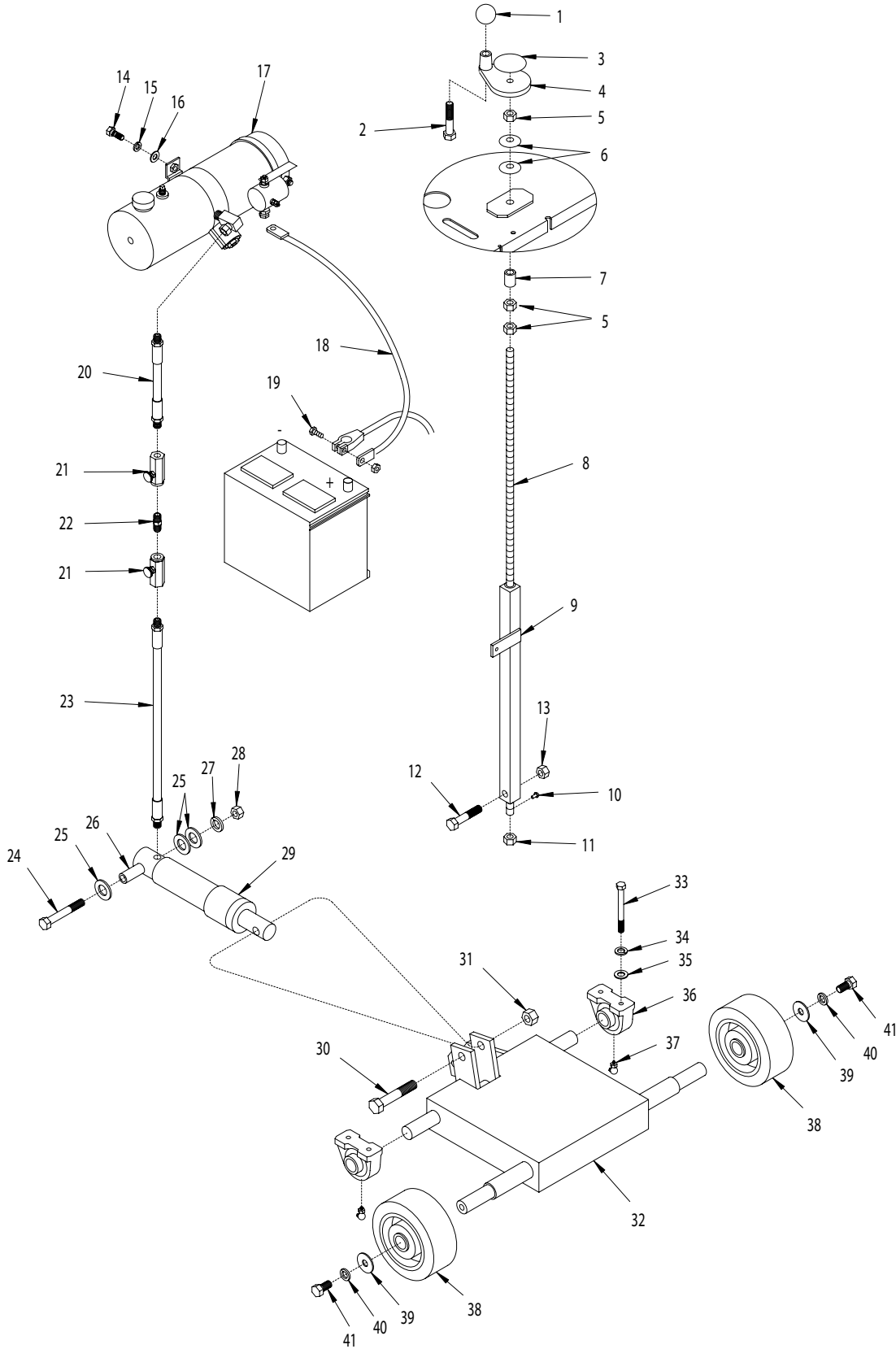
PARTS LISTING - ILLUSTRATION 1 : FRAME ASSEMBLY			
ITEM#	PART#	DESCRIPTION	QTY.
1	50650	CONSOLE	1
2	50504	TANK, FUEL 5 GAL.	1
3	61056	CAP, FUEL TANK	1
4	11650	PIPE PLUG 1/8 NPT (BRASS)	2
5	50309	TUBE, FUEL PICK-UP 19-3/4"	1
6	10308	SCREW, CAP 1/2-20x1-1/2	2
7	10312	WASHER, FLAT 1/2	6
8	10205	NUT, LOCK 1/2-20	2
9	10125	PIN, DETENT RING 1/2x1-1/2 E.L.	1
10	61108	GRIP, HAND 1" MODEL SX	2
11	50522	HANDLE BAR 36"	2
12	51230	KNOB, STAR CLAMPING 3/8-16x1" STUD	2
13	10145	PIN, DETENT RING 3/16x1-5/16 E.L.	2
14	10055	SCREW, CAP 3/8-16x1	8
15	10811	WASHER, LOCK 3/8	8
16	10025	WASHER, FLAT 3/8	8
17	57148	GROMMET 3/8ID X 1/8GRV. X 5/8GD	1
18	51253	GROMMET 1-45/64ID X 1/8GRV. X 2GD	1
19	50702	COVER, BELT	1
20	10053	SCREW, CAP 5/16-18x3/4	3
21	10801	WASHER, LOCK 5/16	3
22	10213	WASHER, FLAT 5/16	3
23	10907	SCREW, CAP 3/8-16x3/4	1
24	10811	WASHER, LOCK 3/8	1
25	10025	WASHER, FLAT 3/8	1
26	10907	SCREW, CAP 3/8-16x3/4	1
27	10811	WASHER, LOCK 3/8	1
28	10025	WASHER, FLAT 3/8	1
29	49016	PIN, DETENT RING 1/4 X 1 E.L.	1
30	50704	COVER, ARBOR	1
31	10055	SCREW, CAP 3/8-16x1	2
32	10811	WASHER, LOCK 3/8	2
33	10025	WASHER, FLAT 3/8	2
34	50703	GUARD, LOWER PULLEY	1
35	50701	MAIN FRAME	1
36	51011	GUIDE POINTER, REAR	1
37	10834	SCREW, CAP 1/4-20x1/2	2
38	50507	BRACKET, ENGINE MOUNT (REFER TO ILLUS. 11)	2
39	50508	MOUNT, TRANSMISSION	1
40	10021	SCREW, CAP 3/8-24x1	4
41	10025	WASHER, FLAT 3/8	8
42	10811	WASHER, LOCK 3/8	4
43	10014	NUT 3/8-24	4
44	50606	BAIL, LIFTING	1
45	10321	SCREW, CAP 1/2-20x1-1/4	4
46	10312	WASHER, FLAT 1/2	4
47	10045	WASHER, LOCK 1/2	4
48	10072	NUT 1/2-20	4
49	10806	SCREW, CAP 5/16-18 X 1	2
50	10213	WASHER, FLAT 5/16	4
51	50711	BRACE, LIFTING BAIL	1
52	10801	WASHER, LOCK 5/16	2
53	10054	NUT 5/16-18	2
54	10384	SCREW, MACHINE 10-32 X 1	1
55	52022	BUMPER, RUBBER 10D X 3/16ID X 7/16H	1
56	40378-S1	WASHER, FENDER 1/4ID X 1-1/4OD S.S.	3
57	10831	WASHER, LOCK, INT. TOOTH #10	1
58	10832	NUT 10-32	1



100 Thomas Johnson Drive, Frederick, MD 21702-4600 USA  
 Phone (301) 663-1600 • 1-800-638-3326  
 Fax (301) 663-1607 • 1-800-447-3326  
 Website: www.edcoinc.com • Email: sales@edcoinc.com

Printed in USA  
 ©2004

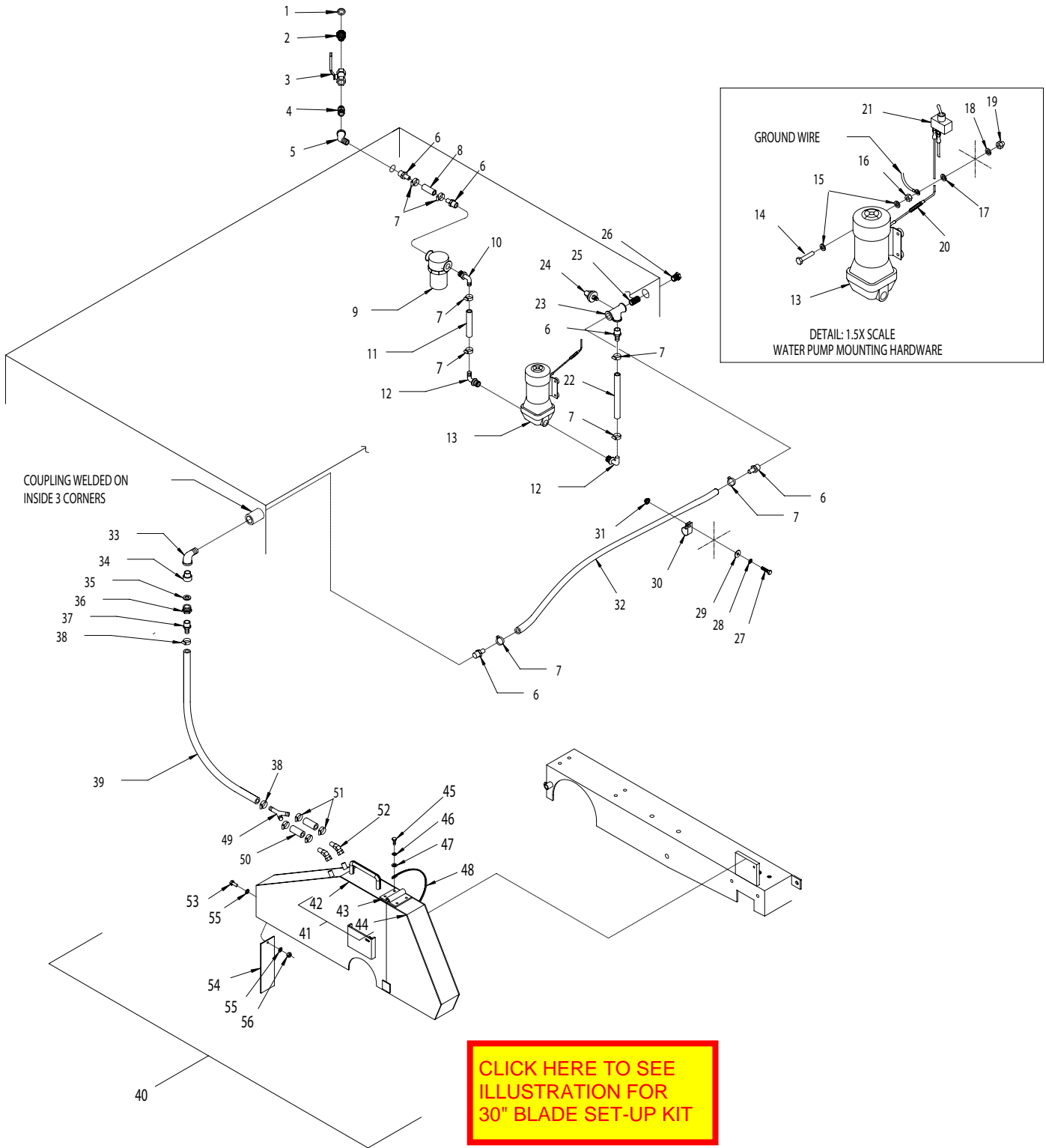
**ILLUSTRATION 2 : LIFTING ASSEMBLY**



PARTS LISTING - ILLUSTRATION 2 : LIFTING ASSEMBLY			
ITEM#	PART#	DESCRIPTION	QTY.
1	14023	KNOB, BALL 1-3/8 w/ 1/2-13 THD., BLACK	1
2	10323	SCREW, CAP 1/2-13x2-1/2	1
3	80007	DECAL, CUT CONTROL - DN/UP (SMALL)	1
4	57016	HANDWHEEL, SMALL w/ 1/2-13 THD.	1
5	10417	NUT 1/2-13	3
6	10426	WASHER, BELLEVILLE 1/2IDx3/64THK	2
7	50526	SPACER, STEEL 1/2"IDx1"LG	1
8	50409	ROD, ALLTHREAD LINKAGE 1/2-13x22"	1
9	50412	LINKAGE LOWER TUBE	1
10	10127	SCREW, DRIVE 1/8x1/4"L	1
11	50455	NUT 1/2-13, SPECIAL	1
12	10343	SCREW, CAP 1/2-20x2-1/2	1
13	10205	NUT, LOCK 1/2-20	1
14	10055	SCREW, CAP 3/8-16x1	2
15	10811	WASHER, LOCK 3/8	2
16	10025	WASHER, FLAT 3/8	2
17	50620	PUMP, HYDRAULIC ELECTRIC, 12VDC M-319	1
18	50117R	CABLE, EYE-EYE 4GA.x24" (RED)	1
19	10342	SCREW, CAP 5/16-18x1-1/2	1
20	57078	HOSE, HYDRAULIC 1/4 NPTx6-1/2" LOA.	1
21	61116	VALVE, FLOW CONTROL	2
22	10717	NIPPLE, HEX 1/4 NPT (BRASS)	1
23	50527	HOSE, HYDRAULIC 1/4 NPTx15-1/2" LOA.	1
24	10324	SCREW, CAP 1/2-13x3-1/2	1
25	10009	WASHER, FLAT 3/4	3
26	61021	SPACER,CYL.REAR 1/2"ID x 2-1/4	1
27	10045	WASHER, LOCK 1/2	1
28	10417	NUT 1/2-13	1
29	61020	CYLINDER, HYDRAULIC	1
30	10326	SCREW, CAP 5/8-11x3	1
31	10809	NUT, LOCK 5/8-11	1
32	50502	FORK	1
33	10868	SCREW, CAP 3/8-16 X 3-1/2	4
34	10811	WASHER, LOCK 3/8	4
35	10025	WASHER, FLAT 3/8	4
36	50222	BEARING, BALL 1" TPB	2
37	10961	FITTING, GREASE 1/4-28 X 90D	2
38	50439	WHEEL 6x2-1/2x1"BRG., RED POLY	2
39	10433	WASHER, BELLEVILLE 1/2IDx3/32THK	2
40	10045	WASHER, LOCK 1/2	2
41	10914	SCREW, CAP 1/2-13x1	2



**ILLUSTRATION 3 : WATER PUMP & BLADE GUARD ASSEMBLY**





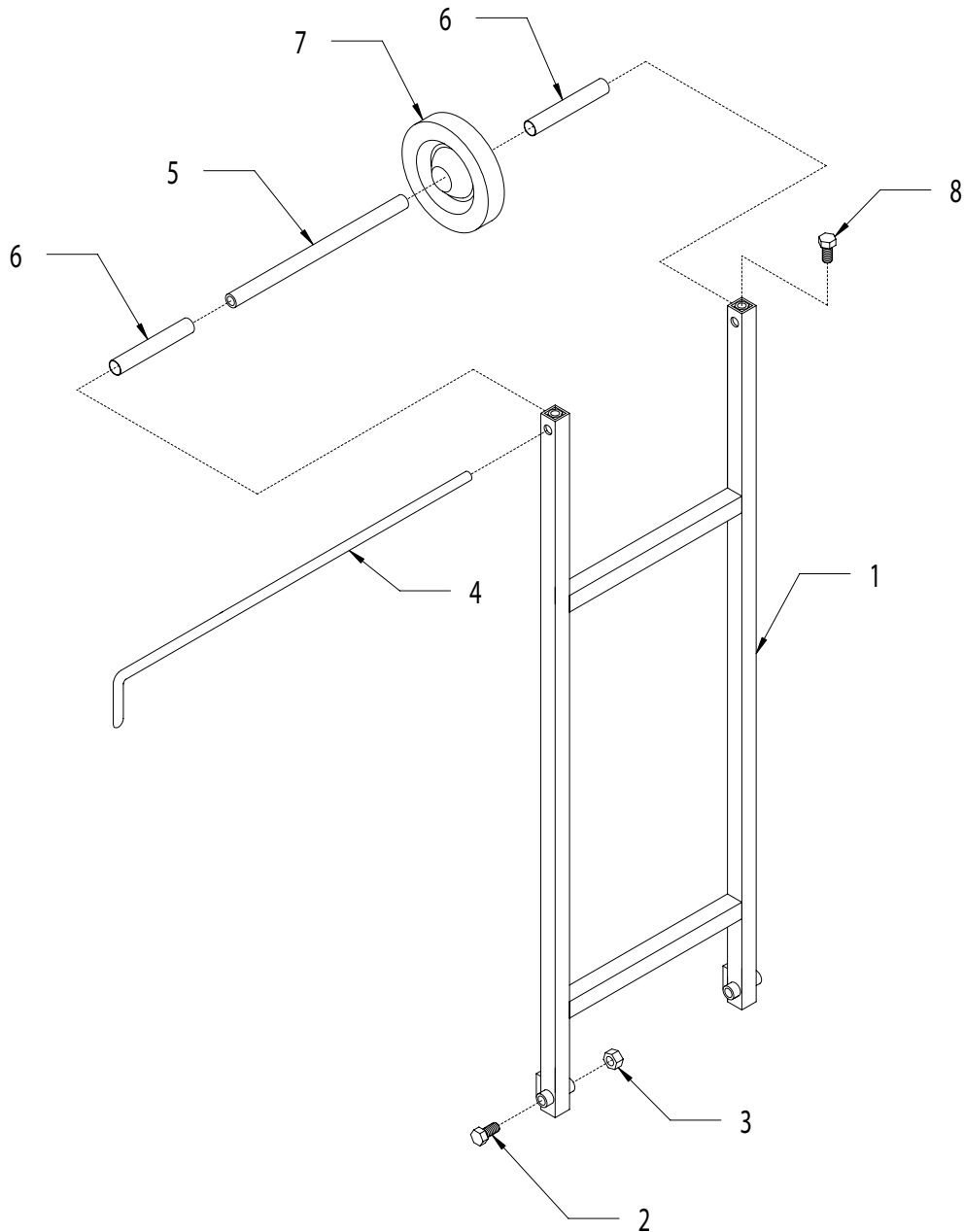
PARTS LISTING - ILLUSTRATION 3 : WATER PUMP & BLADE GUARD ASSEMBLY							
ITEM#	PART#	DESCRIPTION	QTY.	ITEM#	PART#	DESCRIPTION	QTY.
1	10070	WASHER, HOSE 3/4	1	35	10070	WASHER, HOSE 3/4	1
2	80021	CONN., SWIVEL FEM. 3/4 HOSEx 1/2 MPT (INCLUDES ITEM #1)	1	36	10780	CONNECTOR, MALE 3/4Hx1/2 FPT	1
3	10711	VALVE, BALL 1/2 FPT	1	37	80061	BARB, PUSH-ON 1/2 HOSEx1/2 MPT	1
4	10679	NIPPLE, HEX 1/2 NPT (BRASS)	1	38	50069	CLAMP, HOSE, SAE #6, ADJ. TO 13/16	2
5	10734	ELBOW, STREET 1/2NPT X 45 (BLACK)	1	39		HOSE 1/2"ID (DIFFERENT LENGTHS)	1
6	10680	BARB, 1/2 HOSEx1/2 MPT (PLASTIC)	5		57183	24"L FOR 24-26" GUARD	
7	50069	CLAMP, HOSE, SAE #6, ADJ. TO 13/16	8		57140	26"L FOR 18-20" GUARD	
8	50532	HOSE, WATER 1/2" IDx2"L	1		57140	26"L FOR 14-16" GUARD	
9	57170	STRAINER, NYLON T-STYLE 1/2 FPT	1	40		GUARD ASSEMBLY, BLADE (ITEMS 42-56)	1
10	50471	BARB ELBOW 90, 1/2 HOSEx1/2 MPT	1		57449A	24-26" BLADE	
11	57168	HOSE, WATER 1/2"IDx4-7/8" L	1		57450A	18-20" BLADE	
12	50469	PUMP QUAD PORT BARB ELBOW 1/2" (COMES w/ PUMP)	2		57451A	14-16" BLADE	
13	50470	PUMP, WATER, 12VDC, FLOJET QUAD	1	41		GUARD ONLY, COMPLETE (ITEMS 42-47)	1
14	10905	SCREW, CAP 1/4-20x1-1/4	4		57449	24-26" BLADE	
15	10602	WASHER, FLAT 1/4	8		57450	18-20" BLADE	
16	10015	NUT, LOCK 1/4-20	4		57451	14-16" BLADE	
17	10451	WASHER, LOCK, INT. TOOTH 1/4" (USED ON GROUND ONLY)	1	42		GUARD, BLADE, REAR ONLY	1
18	10038	WASHER, LOCK 1/4	4		57449R	24-26" BLADE	
19	10876	NUT, ACORN 1/4-20	4		57450R	18-20" BLADE	
20	50447	FUSE & HOLDER, 10AMP	1		57451R	14-16" BLADE	
21	10633	SWITCH, TOGGLE SPST (SEE ILLUS. 13, ITEM 3)	1	43	11617	HINGE, BUTT 3 X 3 X 7GA. S.S.	1
22	57176	HOSE, WATER 1/2"IDx7-1/4"L	1	44		GUARD, BLADE, FRONT ONLY	1
23	50525	PIPE TEE, WATER PRESSURE SWITCH 1/2 NPT	1		57449F	24-26" BLADE	
24	50215	SWITCH, PRESSURE, COIL IGN., N.O.	1		57450F	18-20" BLADE	
25	10728	PIPE NIPPLE, CLOSE 1/2 NPT (BLACK)	1		57451F	14-16" BLADE	
26	50552	PIPE PLUG 1/2 NPT (BRASS)	1	45	10834	SCREW, CAP 1/4-20x1/2	4
27	10031	SCREW, CAP 1/4-20x1	1	46	10038	WASHER, LOCK 1/4	4
28	10038	WASHER, LOCK 1/4	1	47	10602	WASHER, FLAT 1/4 (USED ON PIN & CABLE ASSY. ONLY)	1
29	10602	WASHER, FLAT 1/4	1	48		PIN & CABLE ASSY., BLADE GUARD	1
30	11565	CLAMP, LOOM, 5/8 (SAE SIZE 10)	1		57483	24-26" BLADE	
31	10861	NUT, KEPS 1/4-20	1		57484	18-20" BLADE	
32	50655	HOSE, WATER 1/2"IDx20"L	1		57485	14-16" BLADE	
33	10724	ELBOW, STREET 1/2 NPTx90 (BLACK)	1	49	10682	BARBED FITTING, "Y" 1/2" HOSE	1
34	80021	CONN., SWIVEL FEM. 3/4HOSE x1/2 MPT (INCLUDES ITEM #35)	1	50	50532	HOSE, WATER 1/2"IDx2"L	2
				51	50069	CLAMP, HOSE, SAE #6, ADJ. TO 13/16	4
				52	10710	FITTING, SWIVEL 45, 1/4 NPT HYD.	2
				53	10018	SCREW, CAP 1/4-20x3/4	1
				54	41115	FLAP, SPLASH 2-1/2x8	1
				55	10602	WASHER, FLAT 1/4	2
				56	10015	NUT, LOCK 1/4-20	1



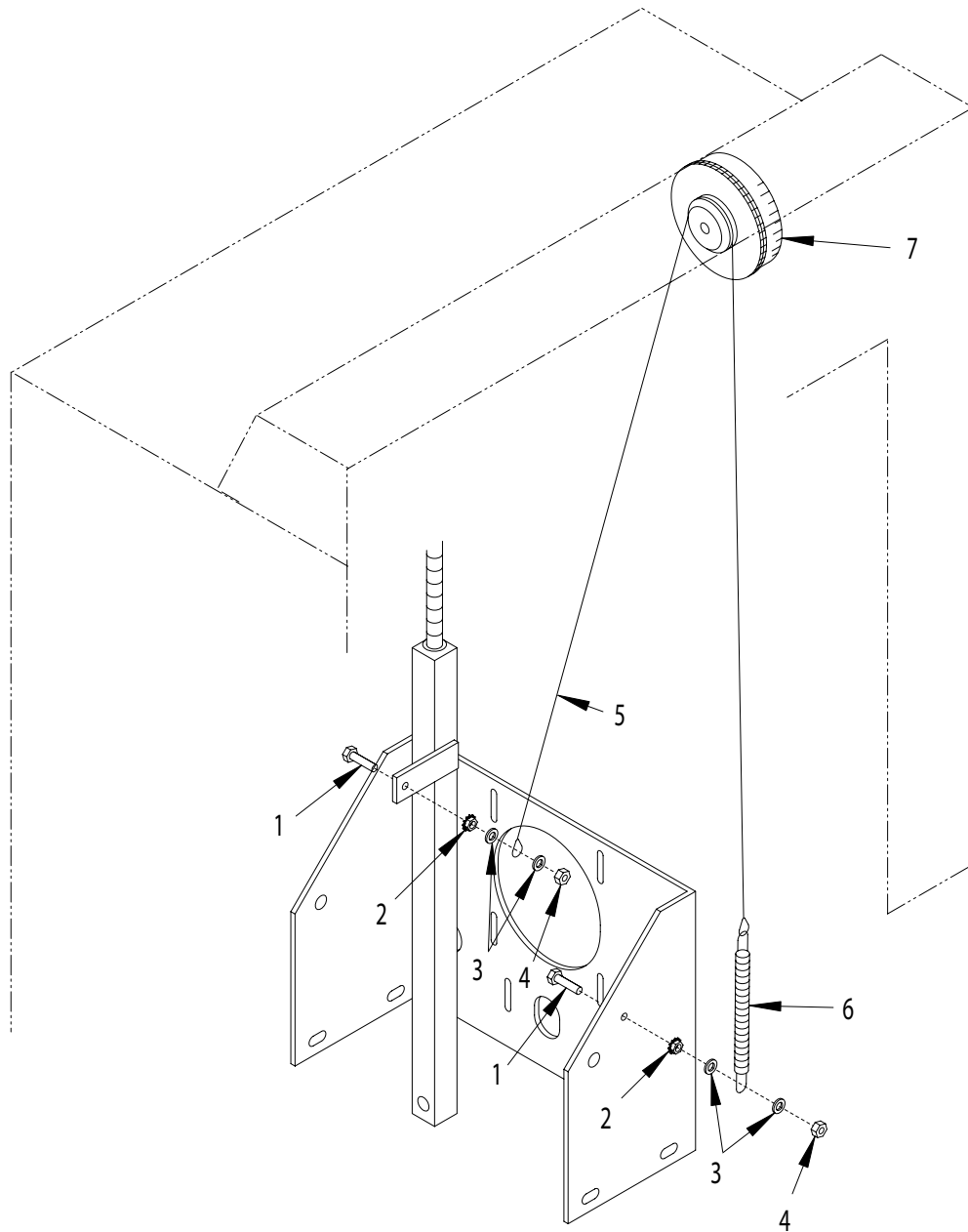
100 Thomas Johnson Drive, Frederick, MD 21702-4600 USA  
 Phone (301) 663-1600 • 1-800-638-3326  
 Fax (301) 663-1607 • 1-800-447-3326  
 Website: www.edcoinc.com • Email: sales@edcoinc.com

Printed in USA  
 ©2004

**ILLUSTRATION 4 : GUIDE BAR ASSEMBLY**



ITEM#	PART#	DESCRIPTION	QTY.
1	57119	GUIDE BAR	1
2	10202	SCREW, CAP 1/2-20x3	2
3	10205	NUT, LOCK 1/2-20	2
4	50514	POINTER, FRONT 24-1/2"	1
5	57120	AXLE TUBE, GUIDE WHEEL	1
6	57171	SPACER TUBE 5-1/8, GUIDE BAR WHEEL	2
7	50536	WHEEL 5x1-1/2x3/4" BORE	1
8	10304	SCREW, CAP 1/2-20x1	2

**ILLUSTRATION 5 : BLADE DEPTH GAUGE ASSEMBLY**


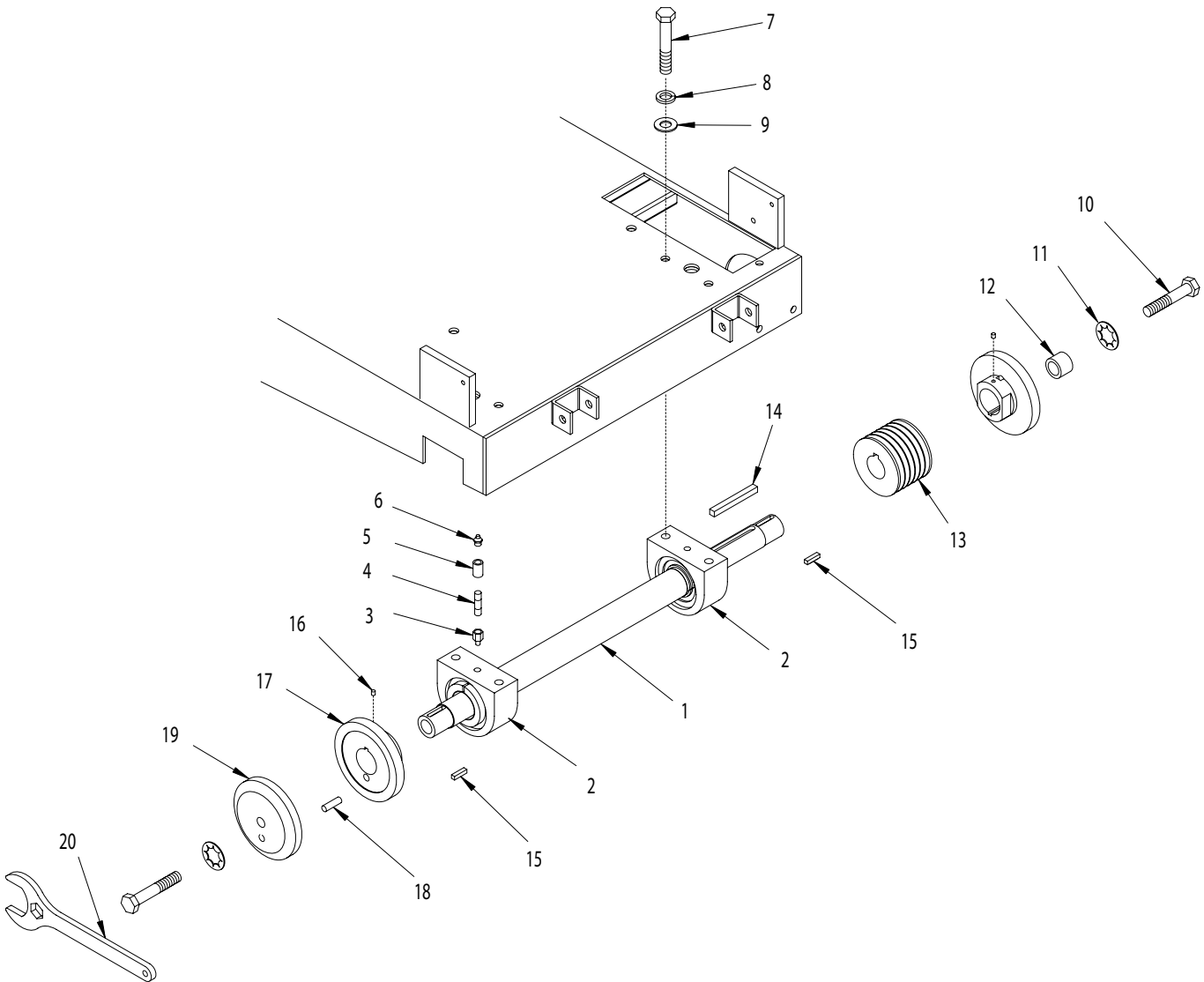
ITEM #	PART #	DESCRIPTION	QTY.
1	10031	SCREW, CAP 1/4-20x1	2
2	10861	NUT, KEPS 1/4-20	2
3	10602	WASHER, FLAT 1/4	4
4	10150	NUT, HEX NYLON LOCK 1/4-20	2
5	57143	CABLE, DEPTH GAUGE 3/32 x34"L	1
6	3636	SPRING , EXT. 6"L ("A" ADAPTER)	1
7	57132	WHEEL, DEPTH GAUGE (SEE ILUS. 12, ITEMS 24-30)	1



100 Thomas Johnson Drive, Frederick, MD 21702-4600 USA  
 Phone (301) 663-1600 • 1-800-638-3326  
 Fax (301) 663-1607 • 1-800-447-3326  
 Website: www.edcoinc.com • Email: sales@edcoinc.com

Printed in USA  
 ©2004

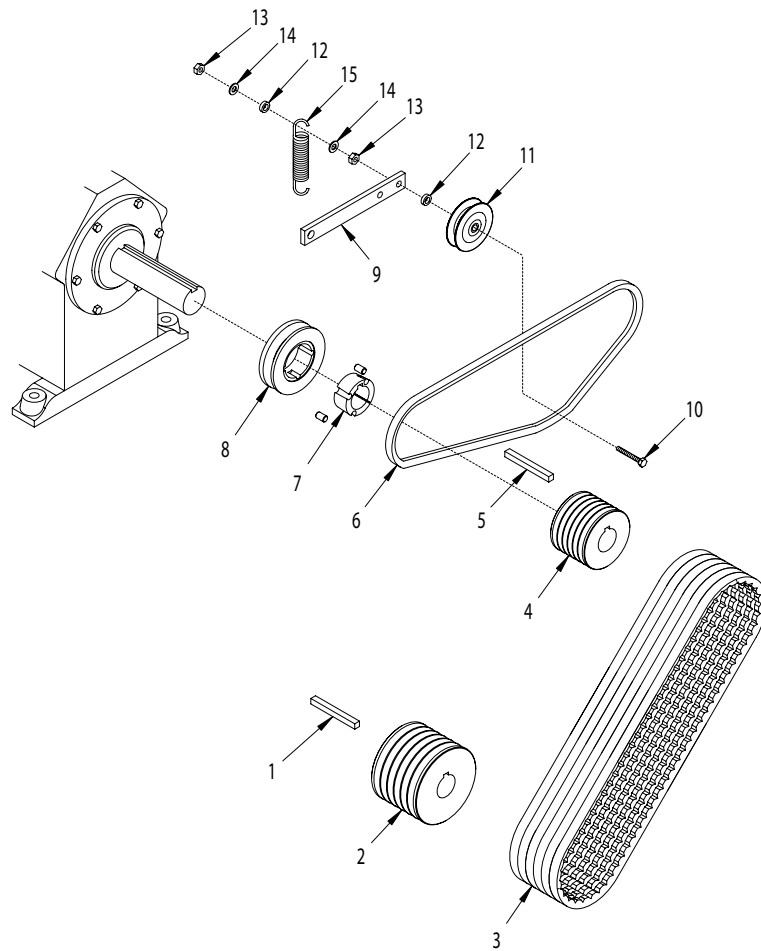
**ILLUSTRATION 6 : ARBOR ASSEMBLY**



ITEM#	PART#	DESCRIPTION	QTY.	ITEM#	PART#	DESCRIPTION	QTY.
1	50720	ARBOR SHAFT 28-1/8"L	1	12	10096	COLLAR, LOCKING 5/8"ID	1
2	50460	BEARING, BALL 1-1/2" TPB W/SKWEZLOC	2	13	10511	SHEAVE 3.65"ODx6GR.3Vx1-7/16"B	1
3	50541	ADAPTER, GREASE FIT. 1/8FPT X 1/4-28	2	10512	4.80"ODx6GR.3Vx1-7/16"B		
4	10798	PIPE NIPPLE 1/8NPTx1-1/2 (BLACK)	2	14	10074	KEY 3/8SQ X 3-1/2	1
5	10698	PIPE COUPLING 1/8 NPT (GALV.)	2	15	10174	KEY 1/4SQ X 1	2
6	10006	FITTING, GREASE 1/8NPTx45D	2	16	10161	SCREW, SET 1/4-28x5/16	2
7	10499	SCREW, CAP 1/2-13x3	4	17	50721	ARBOR BACKING PLATE 5"	2
8	10045	WASHER, LOCK 1/2	4	18	50722	PIN, SHEAR PROOF 3/8x1-1/2	1
9	10312	WASHER, FLAT 1/2	4	19	57403	ARBOR BLADE CAP 5"	1
10	10359	SCREW, CAP 5/8-11x3-1/4	2	20	57406	WRENCH, ARBOR COMBINATION 2 & 15/16	2
11	10457	WASHER, LOCK, INT. TOOTH 5/8"	2				



**ILLUSTRATION 7 : BELT DRIVE ASSEMBLY**



ITEM#	PART#	DESCRIPTION	QTY.	ITEM#	PART#	DESCRIPTION	QTY.
*1	10074	KEY 3/8 SQ.x3-1/2	1	7	10531	BUSHING, TAPER-LOCK 1610 1-7/16"B	1
*2	10511	SHEAVE 3.65"ODx6GR.3Vx1-7/16"B	1	8	10528	SHEAVE 4.15"ODx1GR.BxTAPER-LOCK	1
	10512	SHEAVE 4.80"ODx6GR.3Vx1-7/16"B		9	50544	ARM, IDLER	1
*3	10228	BELT 3VX-450	6	10	10393	SCREW, CAP 3/8-24x2-1/2	1
	10235	BELT 3VX-475		11	50115	IDLER PULLEY 3"OD X 1GR.AB X 3/8"B	1
*4	10510	SHEAVE 2.8"ODx6GR.3Vx1-7/16"B	1	12	10113	SPACER, STEEL 9/16ODx3/8IDx7/32	2
	10511	SHEAVE 3.65"ODx6GR.3Vx1-7/16"B		13	10004	NUT, LOCK 3/8-24	2
5	10074	KEY 3/8 SQ.x3-1/2	1	14	10025	WASHER, FLAT 3/8	2
*6	10261	BELTAP-56	1	15	50074	SPRING, EXT. 1"ODx3-15/16	1
	10267	BELTAP-57		*NOTE: SEE CHART BELOW FOR SPECIFICATIONS			

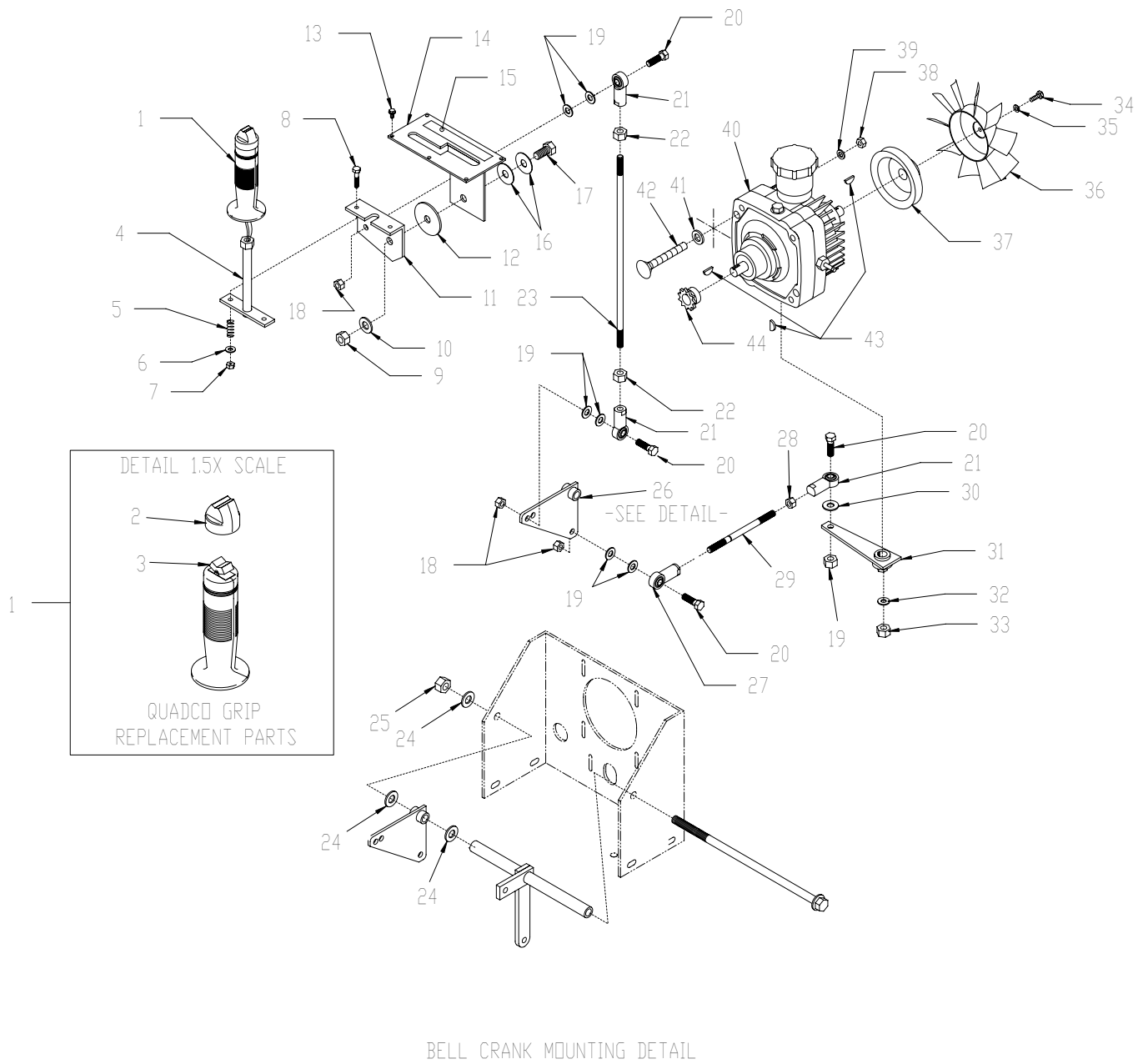
BLADE SIZES & BELT DRIVE SPECIFICATIONS						
BLADE SIZE	BLADE SPEED (RPM) UNDERLOAD	ENGINE RPM UNDERLOAD	ENGINE SHEAVE DIA. ITEM#4	ARBOR SHEAVE DIA. ITEM#2	ARBOR BELT SIZE ITEM#3	TRANS. BELT SIZE ITEM#6
24-26"	2091	2750	3.65"	4.80"	3VX-475	AP-57
18-20"	2110	2750	2.80"	3.65"	3VX-450	AP-56
14-16"	2750	2750	3.65"	3.65"	3VX-475	AP-56



100 Thomas Johnson Drive, Frederick, MD 21702-4600 USA  
 Phone (301) 663-1600 • 1-800-638-3326  
 Fax (301) 663-1607 • 1-800-447-3326  
 Website: www.edcoinc.com • Email: sales@edcoinc.com

Printed in USA  
 ©2004

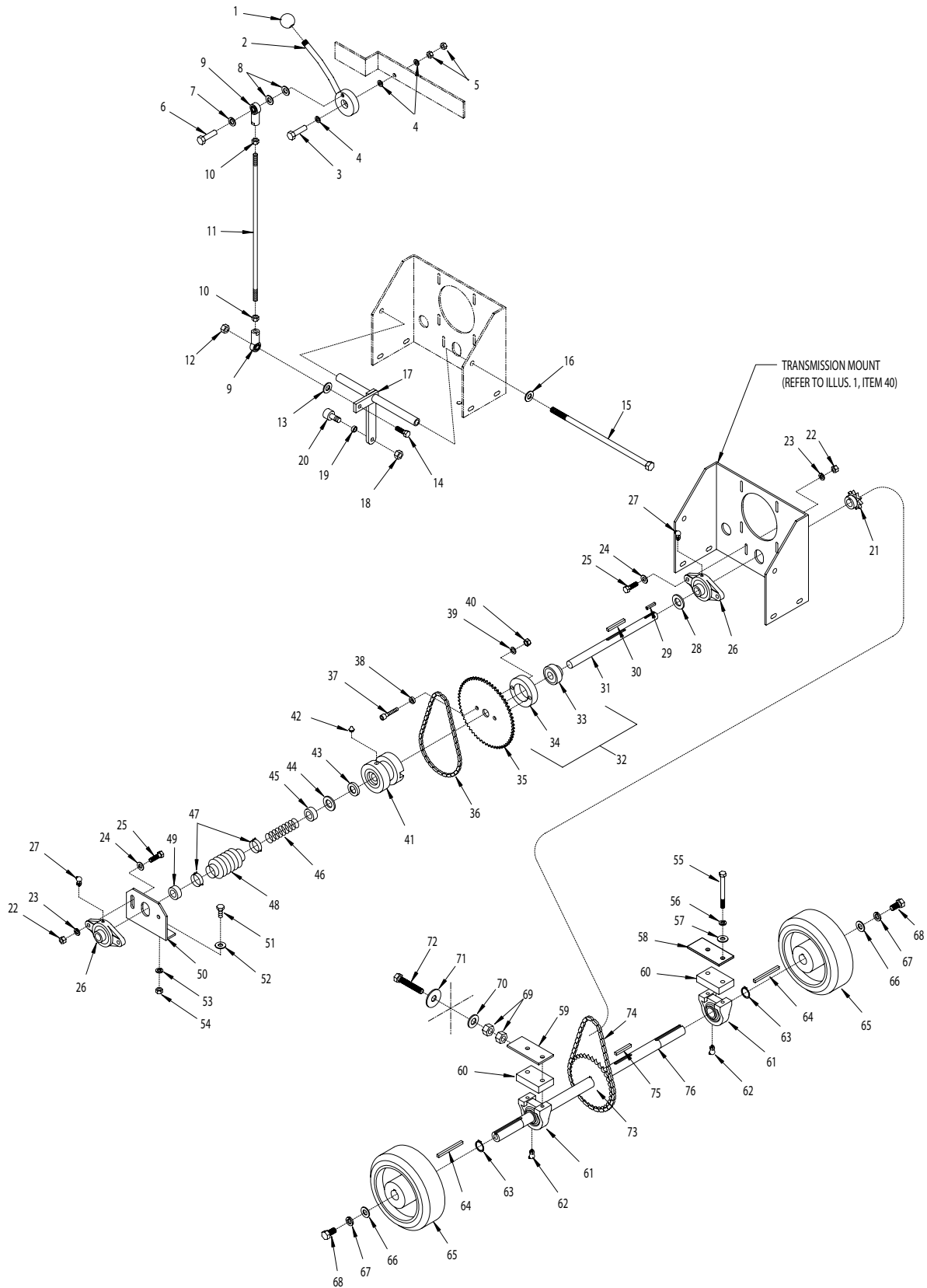
**ILLUSTRATION 8 : TRANSMISSION ASSEMBLY**



PARTS LISTING - ILLUSTRATION 8 : TRANSMISSION ASSEMBLY			
ITEM#	PART#	DESCRIPTION	QTY.
1	50610	GRIP w/ ROCKER SWITCH, QUADCO G301	1
2	50615	CAP (RUBBER BOOT) "QUADCO" GRIP	1
3	50614	SWITCH, ROCKER, C&K #7105	1
4	50608	LEVER, DRIVE	1
5	57471	SPRING, COMP. .468"OD x 1.25" FL	2
6	10602	WASHER, FLAT 1/4	2
7	10015	NUT, LOCK 1/4-20	2
8	10315	SCREW, CAP 1/4-20x1-1/2	2
9	10205	NUT, LOCK 1/2-20	1
10	10312	WASHER, FLAT 1/2	1
11	50613	PLATE, DRIVE LEVER PRESSURE	1
12	50428	WASHER, FIBER 2-1/4 ODx1/2 ID x 1/8 THK.	1
13	10877	SCREW, CAP STSHW 10-24x1/2	5
14	50607	GATE, DRIVE LEVER	1
15	91144	DECAL, DRIVE CONTROL	1
16	10426	WASHER, BELLEVILLE 1/2IDx3/64THK	2
17	10321	SCREW, CAP 1/2-20x1-1/4	1
18	10004	NUT, LOCK 3/8-24	4
19	10025	WASHER, FLAT 3/8	6
20	10309	SCREW, CAP 3/8-24x1-1/4	4
21	10919	ROD END, FEMALE 3/8-24 R.H. THREAD	3
22	10014	NUT 3/8-24	2
23	57124	LINKAGE, ROD 3/8x14-5/8"L	1
24	10312	WASHER, FLAT 1/2	3
25	10407	NUT, LOCK 1/2-13	1
26	57123	BELLCRANK, DRIVE CONTROL	1
27	10919L	ROD END, FEMALE 3/8-24 L.H. THREAD	1
28	10014	NUT 3/8-24	1
29	50420	LINKAGE, ROD 3/8x5-3/4"L	1
30	10025	WASHER, FLAT 3/8	1
31	50422	TRANS. CONTROL ARM	1
32	10811	WASHER, LOCK 3/8	1
33	10404	NUT 3/8-16	1
34	10018	SCREW, CAP 1/4-20x3/4	1
35	10038	WASHER, LOCK 1/4	1
36	50266	FAN BLADE W/ PLATE 7", TRANSMISSION	1
37	50062	SHEAVE, TRANS. 4"OD x 1 GR x .671"B	1
38	10404	NUT 3/8-16	4
39	10811	WASHER, LOCK 3/8	4
40	50061	TRANSMISSION, HYDROSTATIC	1
41	10040	WASHER, GARRET 17/32"ID x 1"OD x .054" THK	4
42	10909	BOLT, CARRIAGE 3/8-16x3	4
43	50071	KEY, WOODRUFF 1/8x1/2 (#404)	3
44	50048	SPROCKET #3511 x .67" BORE	1



**ILLUSTRATION 9 : CLUTCH & REAR AXLE ASSEMBLY**





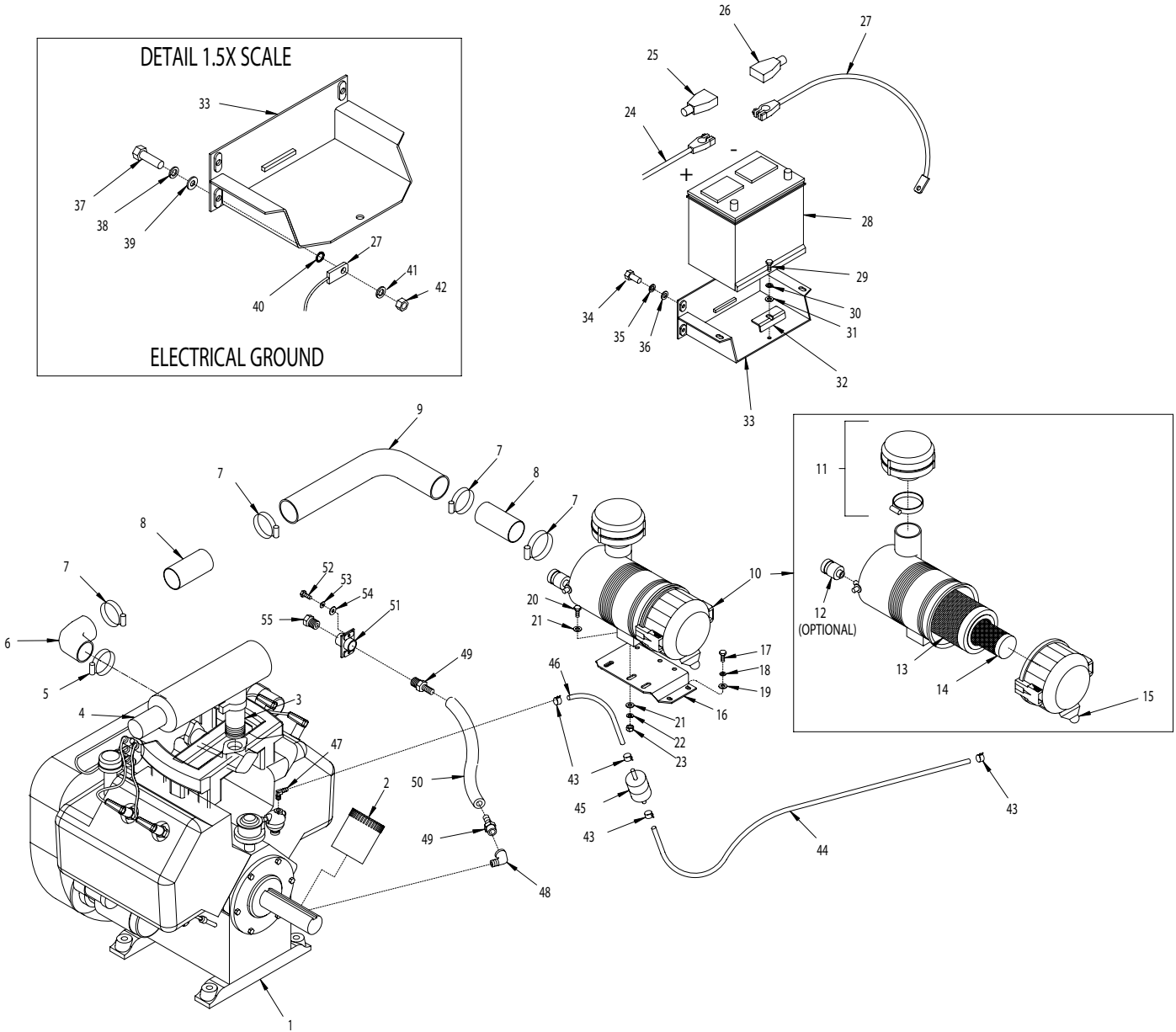
PARTS LISTING - ILLUSTRATION 9 : CLUTCH & REAR AXLE ASSEMBLY							
ITEM #	PART#	DESCRIPTION	QTY.	ITEM #	PART #	DESCRIPTION	QTY.
1	14023	KNOB, BALL 1-3/8 W/ 1/2-13THD., BLK.	1	37	10354	SCREW, SKT.HD.CAP 3/8-24x1-3/4	2
				38	10113	SPACER, STL. 9/16ODx3/8IDx7/32	2
2	50611	LEVER, CLUTCH	1	39	10811	WASHER, LOCK 3/8	2
3	10816	SCREW, CAP 3/8-24x1-1/2	1	40	10014	NUT 3/8-24	2
4	10025	WASHER, FLAT 3/8	3	41	57042	CLUTCH, DOG BLOCK	1
5	10004	NUT, LOCK 3/8-24	2	42	10808	FITTING, GREASE 1/4-28 STRAIGHT	1
6	10309	SCREW, CAP 3/8-24x1-1/4	1	43	3695	SEAL, OIL .750x1.375x.250	1
7	10811	WASHER, LOCK 3/8	1	44	10009	WASHER, FLAT 3/4	1
8	10025	WASHER, FLAT 3/8	2	45	57044	CLUTCH SPRING CUP	1
9	10919	ROD END, FEM. 3/8-24 R.H. THD.	2	46	10922	SPRING, COMP. 1"ODx3.75" FL	1
10	10014	NUT 3/8-24	2	47	10768	CLAMP, HOSE, SAE #16, ADJ. TO 1-1/2"	2
11	50612	LINKAGE, ROD 3/8x17"L	1	48	10930	BELLOWS 1-1/4IDx2-3/8 ELx1-3/4RL	1
12	10004	NUT, LOCK 3/8-24	1	49	10428	COLLAR, LOCKING 3/4"ID	1
13	10025	WASHER, FLAT 3/8	1	50	50509	MOUNT, JACKSHAFT BEARING	1
14	10309	SCREW, CAP 3/8-24x1-1/4	1	51	10021	SCREW, CAP 3/8-24x1	4
15	10421	SCREW, CAP 1/2-13x13	1	52	10025	WASHER, FLAT 3/8	4
16	10312	WASHER, FLAT 1/2	1	53	10811	WASHER, LOCK 3/8	4
17	50450	BELL CRANK, CLUTCH	1	54	10014	NUT 3/8-24	4
18	10004	NUT, LOCK 3/8-24	1	55	10318	SCREW, CAP 3/8-16x3-3/4	4
19	10113	SPACER, STL. 9/16ODx3/8IDx7/32	1	56	10811	WASHER, LOCK 3/8	4
20	10924	CAM FOLLOWER BEARING 3/4"x 3/8-24 THREAD	1	57	10025	WASHER, FLAT 3/8	4
				58	50511	SHIM, AXLE BEARING	1
21	50436	SPROCKET #40B10x3/4"BORE	1	59	50512	SHIM, AXLE BEARING W/ADJ.	1
22	10014	NUT 3/8-24	4	60	50510	SPACER, BEARING	2
23	10811	WASHER, LOCK 3/8	4	61	50222	BEARING, BALL 1" TPB	2
24	10025	WASHER, FLAT 3/8	4	62	10960	FITTING, GREASE 1/4-28x45D	2
25	10309	SCREW, CAP 3/8-24x1-1/4	4	63	10906	RETAINING RING, EXT. 1"	2
26	50049	BEARING, BALL 3/4" 2-HOLE FLANGE	2	64	10132	KEY 1/4SQ.x3	2
				65	61065	WHEEL 8x3x1"BORE	2
27	10960	FITTING, GREASE 1/4-28x45D	2	66	10433	WASHER, BELLEVILLE 1/2IDx3/32THK	2
28	10009	WASHER, FLAT 3/4	1	67	10045	WASHER, LOCK 1/2	2
29	50523	KEY 3/16SQ.x1-1/8	1	68	10914	SCREW, CAP 1/2-13x1	2
30	10307	KEY 1/4SQ.x2-1/4	1	69	10417	NUT 1/2-13	2
31	50518	JACKSHAFT, CLUTCH 11-1/2"	1	70	10312	WASHER, FLAT 1/2	1
32	57038A	BEARING & CARRIER ASSY., CLUTCH	1	71	10433	WASHER, BELLEVILLE 1/2IDx3/32THK	1
				72	10340	BOLT, TAP 1/2-13x3 (FULL THD.)	1
33	57038	BEARING, BALL 3/4IDx1.8504"OD	1	73	61126	SPROCKET #40B34x1"BORE	1
34	57039	CARRIER, CLUTCH BEARING	1	74	50542	CHAIN #40x25"LOA	1
35	50476	SPROCKET, CLUTCH #35A60	1	75	10115	KEY 1/4SQ.x2	1
36	64032	CHAIN #35x24-1/2"LOA	1	76	50519	AXLE SHAFT 1"DIA.x25"L	1



100 Thomas Johnson Drive, Frederick, MD 21702-4600 USA  
 Phone (301) 663-1600 • 1-800-638-3326  
 Fax (301) 663-1607 • 1-800-447-3326  
 Website: www.edcoinc.com • Email: sales@edcoinc.com

Printed in USA  
 ©2004

ILLUSTRATION 10 : ENGINE GROUPING

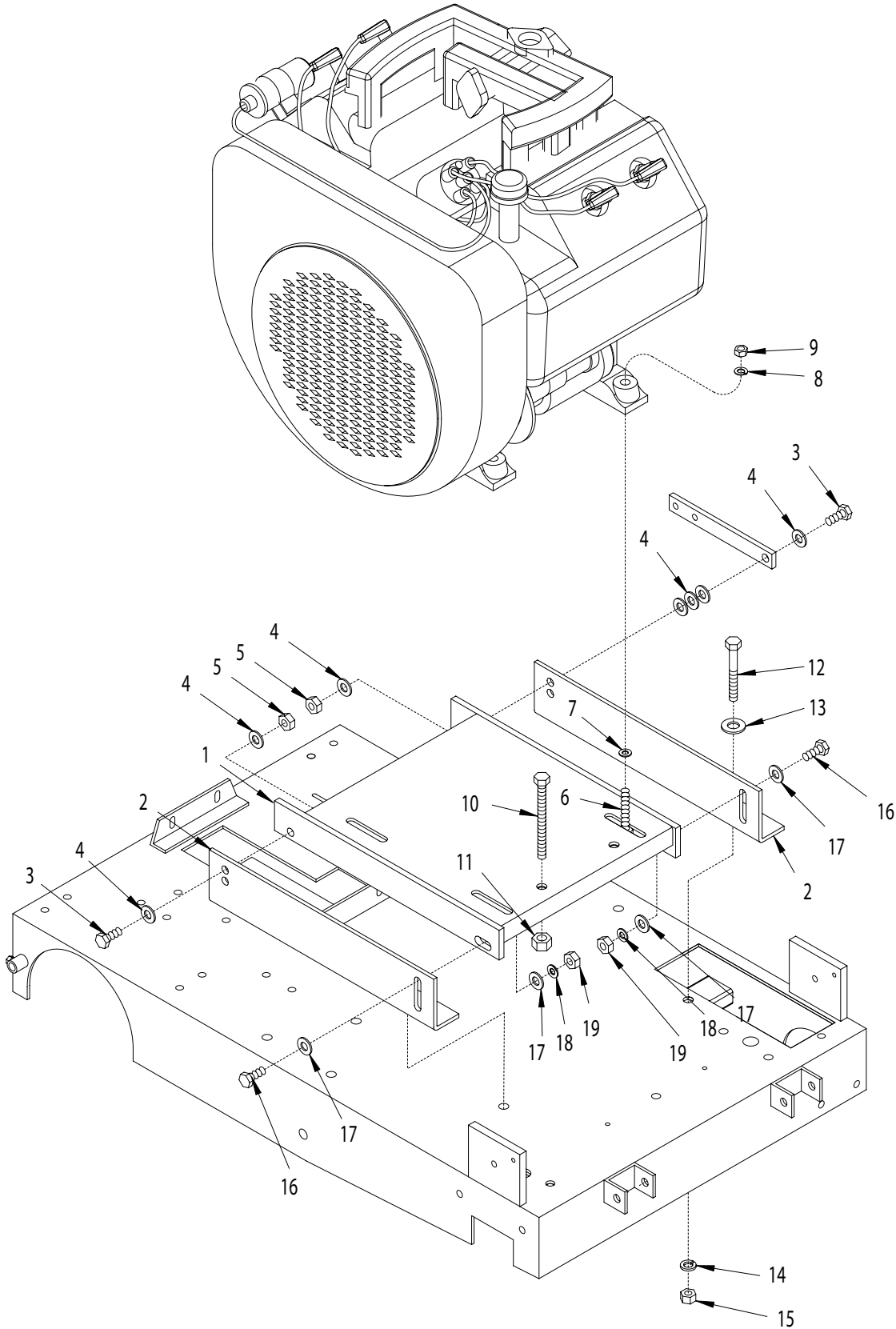


**PARTS LISTING - ILLUSTRATION 10 : ENGINE GROUPING**

ITEM#	PART#	DESCRIPTION	QTY.	ITEM#	PART#	DESCRIPTION	QTY.
1	31401	ENGINE, WISCONSIN 35. HP W4-1770	1	29	10068	SCREW, CAP 3/8-16x1-1/2	1
2	15118	FILTER, OIL WISC. W4-1770 35 HP	1	30	10811	WASHER, LOCK 3/8	1
3	10623	PIPE, MUFFLER 1-1/4NPT X 3"	1	31	10025	WASHER, FLAT 3/8	1
4	10622	MUFFLER WD-72	1	32	57152	CLAMP, BATTERY HOLD-DOWN	1
5	10766	CLAMP, HOSE, SAE #28, ADJ. TO 2-1/4	1	33	57107	TRAY, BATTERY	1
6	10638	HOSE ELBOW, REDUCER 2" TO 1-3/4"	1	34	10907	SCREW, CAP 3/8-16x3/4	3
7	10745	CLAMP, HOSE, SAE #36, ADJ. TO 2-3/4	4	35	10811	WASHER, LOCK 3/8	3
8	50545	PIPE 2"ODx4"L, AIR CLEANER	2	36	10025	WASHER, FLAT 3/8	3
9	50537	HOSE ELBOW, AIR FILTER 2"ID	1	37	10333	SCREW, CAP 3/8-16x1-1/4	1
10	15140	AIR CLEANER ASSY., 2-FW-E2	1	38	10811	WASHER, LOCK 3/8	1
11	15143	PRECLEANER, AIR FILTER	1	39	10025	WASHER, FLAT 3/8	1
12	15154	AIR CLEANER DUST LOAD INDICATOR	1	40	10453	WASHER, LOCK, INT. TOOTH 3/8"	1
13	15141	ELEMENT, AIR FILTER PRIMARY	1	41	10811	WASHER, LOCK 3/8	1
14	15142	ELEMENT, AIR FILTER SAFETY	1	42	10404	NUT 3/8-16	1
15	15144	AIR CLEANER DUCKBILL DRAIN	1	43	10762	CLAMP, HOSE SPRING-TYPE 3/8" GREEN	4
16	50652	MOUNT BRKT., AIR CLEANER	1	44	50619	HOSE, FUEL 1/4"IDx35"L	1
17	10018	SCREW, CAP 1/4-20x3/4	4	45	15116	FILTER, FUEL 1/4" IN LINE	1
18	10038	WASHER, LOCK 1/4	4	46	50618	HOSE, FUEL 1/4"IDx13-1/2"L	1
19	10602	WASHER, FLAT 1/4	4	47	10771	BARB ELBOW 90, 1/4HOSEx1/8MPT	1
20	10053	SCREW, CAP 5/16-18x3/4	2	48	10752	ELBOW, STREET 3/8NPTx45 (BLACK)	1
21	10213	WASHER, FLAT 5/16	4	49	50554	BARB, PUSH-ON 1/2HOSEx3/8MPT	2
22	10801	WASHER, LOCK 5/16	2	50	50659	HOSE, PUSH-ON 1/2"IDx16"L (BLACK)	1
23	10054	NUT 5/16-18	2	51	50604	BRACKET, OIL DRAIN	1
24	57055	CABLE, BATTERY 4GA.x53" (RED)	1	52	10018	SCREW, CAP 1/4-20x3/4	2
25	10928	INSULATOR, BAT.TERM.POST (RED)	1	53	10038	WASHER, LOCK 1/4	2
26	10929	INSULATOR, BAT.TERM.POST (BLACK)	1	54	10602	WASHER, FLAT 1/4	2
27	50323B	CABLE, BATTERY 4GA.x12" (BLACK)	1	55	50552	PIPE PLUG 1/2 NPT (BRASS)	1
28	50321	BATTERY 12 VOLT/400 CCA (POST TERM.)	1				



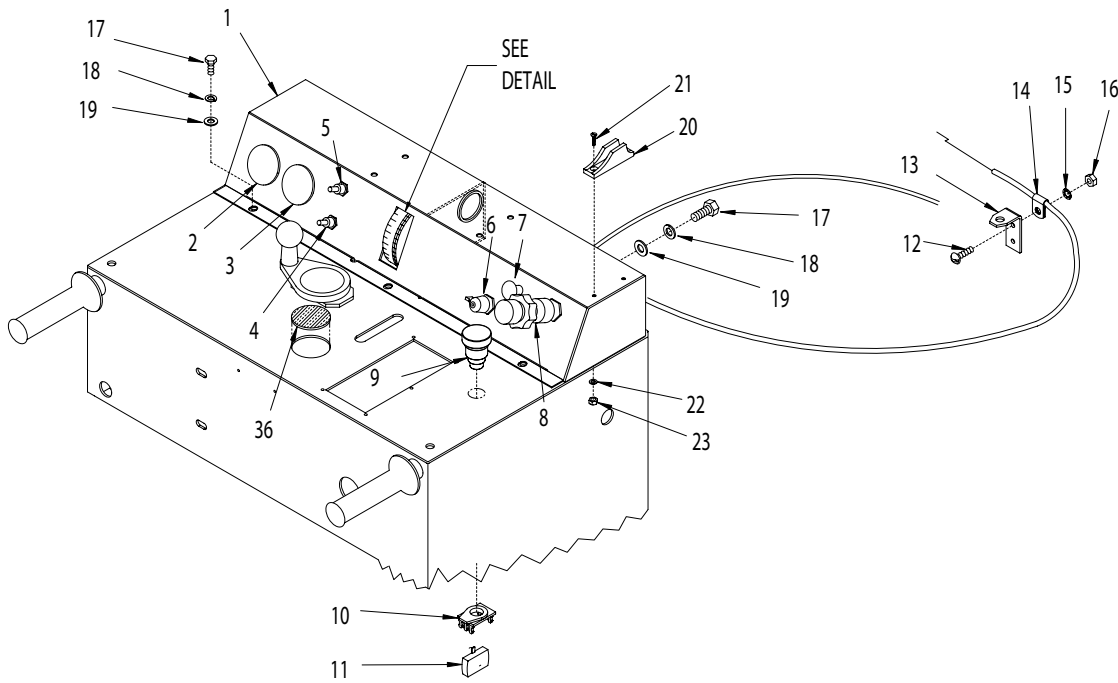
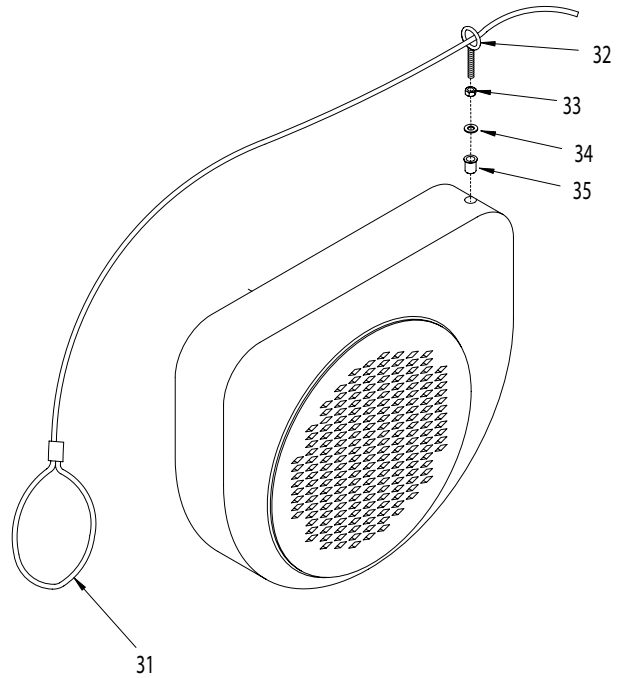
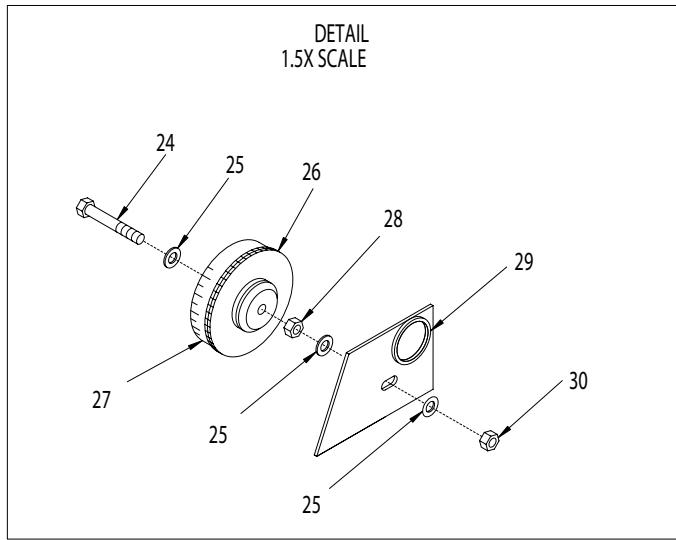
ILLUSTRATION 11: ENGINE MOUNT GROUPING



<b>PARTS LISTING - ILLUSTRATION 11 : ENGINE MOUNT GROUPING</b>			
<b>ITEM #</b>	<b>PART #</b>	<b>DESCRIPTION</b>	<b>QTY.</b>
1	50506	MOUNT, 35HP ENGINE	1
2	50507	BRACKET, ENGINE MOUNT	2
3	10308	SCREW, CAP 1/2-20x1-1/2	2
4	10312	WASHER, FLAT 1/2	7
5	10205	NUT, LOCK 1/2-20	2
6	10343	SCREW, CAP 1/2-20x2-1/2	4
7	10312	WASHER, FLAT 1/2	4
8	10045	WASHER, LOCK 1/2	4
9	10072	NUT 1/2-20	4
10	10373	BOLT, TAP 1/2-13x5 (FULL THD.)	2
11	10417	NUT 1/2-13	2
12	10324	SCREW, CAP 1/2-13x3-1/2	4
13	10312	WASHER, FLAT 1/2	4
14	10045	WASHER, LOCK 1/2	4
15	10417	NUT 1/2-13	4
16	10356	SCREW, CAP 1/2-13x1-1/2	2
17	10312	WASHER, FLAT 1/2	4
18	10045	WASHER, LOCK 1/2	2
19	10417	NUT 1/2-13	2



**ILLUSTRATION 12 : INSTRUMENT PANEL GROUPING**



PARTS LISTING - ILLUSTRATION 12 : INSTRUMENT PANEL GROUPING			
ITEM#	PART#	DESCRIPTION	QTY.
1	50651	INSTRUMENT PANEL	1
2	10631	METER, 30 AMP	1
3	10637	METER, HOUR 2-1/16"	1
4	10633	SWITCH, TOGGLE SPST (WATER PUMP)	1
5	10619	SWITCH, TOGGLE SPDT (BLADE SAVER)	1
6	10632	SWITCH, IGNITION STARTER, LEVER-TYPE	1
7	15129	CABLE, CHOKE CONTROL 72"	1
8	50560	CABLE, VERNIER ADJ. LOCKING CONTROL	1
9	15147	SWITCH PUSH BUTTON ONLY, E-STOP	1
10	15148	SWITCH ASSY. CLIP ONLY, E-STOP	1
11	15167	SWITCH CONTACT BLOCK, N.C. E-STOP	1
12	10830	SCREW, MACHINE 10-32 X 1/2	1
13	50429	BRACKET, THROTTLE CABLE, 35 HP	1
14	10954	CLIP, CONDUIT (THROTTLE CABLE)	1
15	10831	WASHER, LOCK, INT. TOOTH #10	1
16	10832	NUT 10-32	1
17		SCREW, CAP	
	10018	1/4-20x3/4	5
	10031	1/4-20x1	2
18	10038	WASHER, LOCK 1/4	7
19	10602	WASHER, FLAT 1/4	7
20	11591	ROPE CLEAT, NYLON JAM 3/16"-5/16"	1
21	11594	SCREW, MACHINE 10-32x5/8, SLT.FLT	2
22	10831	WASHER, LOCK, INT. TOOTH #10	2
23	10832	NUT 10-32	2
24	10336	SCREW, CAP 3/8-24x 2-1/4	1
25	10025	WASHER, FLAT 3/8	3
26	57132	WHEEL, DEPTH GAUGE	1
27	50543	STICKER, DEPTH GAUGE	1
28	10004	NUT, LOCK 3/8-24	1
29	57149	GROMMET 1-1/4IDx1/8GRV. x1-1/2 GD	1
30	10004	NUT, LOCK 3/8-24	1
31	50555	ROPE, GUIDE BAR	1
32	11593	BOLT, EYE SHOULDER 5/16-18x1-1/8	1
33	10054	NUT 5/16-18	1
34	10801	WASHER, LOCK 5/16	1
35	50644	RIV-NUT 5/16-18	1
36	65022	PLUG, HOLE 2"	1



## LIMITED EQUIPMENT WARRANTY

Equipment Development Company, Inc. herein referred to as EDCO warrants that each new unit manufactured by EDCO to be free from defects in material and workmanship in normal use and service for a period of (1) one year (except in the case of the cutter drum assembly on all model concrete asphalt planes, in which case the warranty period shall be 90 days) from date of shipment to the original buyer or equipment rental center owner.

EDCO will, at its option, repair or replace, at the EDCO factory or at a point designated by EDCO any part, which shall appear to the satisfaction of EDCO inspection to have been defective in material or workmanship.

This warranty, does not apply to failure occurring as a result of abuse, misuse, negligent repairs, corrosion, erosion, normal wear and tear, alterations or modifications made to the product without express written consent of EDCO: or failure to follow the recommended operating practices and maintenance procedures as provided in the products operating and maintenance manuals.

This warranty does not obligate EDCO to bear any transportation charges in connection with the replacement or repair of defective parts. This warranty does not obligate EDCO to bear any expense for travel time or of personnel in connection with any service calls.

Accessories or equipment furnished and installed on the product by EDCO but manufactured by others, including but not limited to engines, motors, electrical equipment, transmissions, etc., shall carry the accessory manufacturers' own warranty.

THIS WARRANTY IS IN LIEU OF ALL OTHER WARRANTIES, EXPRESSED OR IMPLIED, OR STATUTORY, INCLUDING ANY WARRANTIES OF MERCHANTABILITY OR OF FITNESS FOR A PARTICULAR PURPOSE.

## LIABILITY LIMITATIONS

The remedies of the user set forth under provisions of warranty outlined above are the exclusive and total liability of EDCO with the respect to their sale or the equipment and service furnished hereunder, in connection with the performance or breach thereof, or from the sale, delivery, installation, repair or technical direction covered by or furnished under the sale, whether based on contract, warranty, negligence, indemnity, strict liability, or otherwise shall not exceed the purchase price of the unit of equipment upon which such liability is based.

EDCO will not in any event be liable to the user, any successors in interest or any beneficiary or assignee relating to this sale for any consequential, incidental, indirect, special or punitive damages arising out of this sale or any breach thereof, or any defects on, or failure of, or malfunction of the equipment under this sale based upon loss of use, lost profits or revenue, interest, lost goodwill, work stoppage, impairment of other goods, loss by reason of shutdown or non-operation, increased expenses of operation of the equipment, cost of purchase or replacement power of claims of users or customers of the user for service interruption whether or not such loss or damage is based on contract, warranty, negligence, indemnity, strict liability, or otherwise.

EDCO reserves the right to modify, alter and improve any part or parts without incurring any obligation to replace any part or parts previously sold without such modified, altered or improved part or parts.

No person is authorized to give any other warranty or to assume any additional obligation on EDCO's behalf unless made in writing and signed by an officer of EDCO.

Equipment Development Company, Inc.

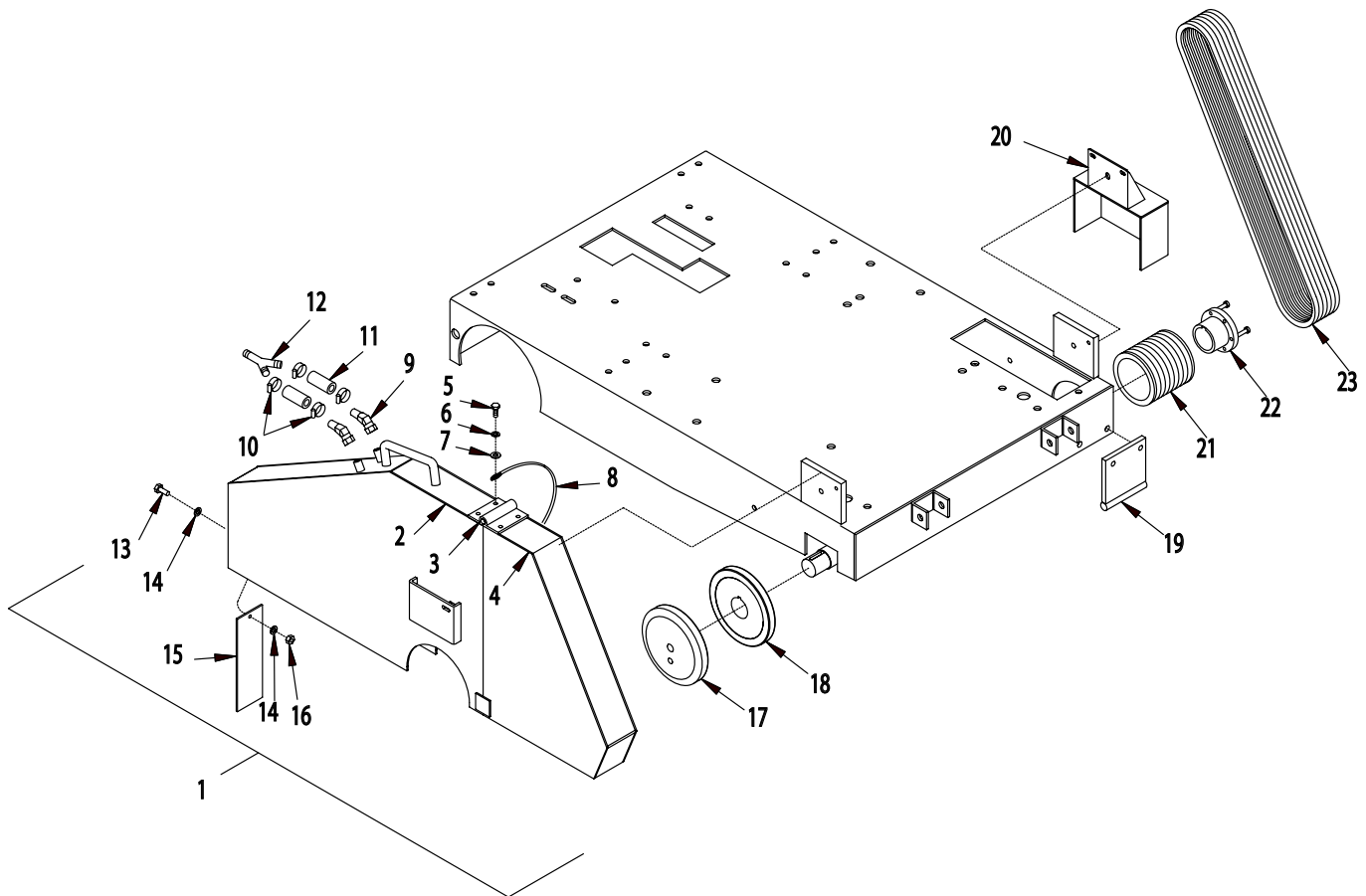
## USE ONLY GENUINE EDCO PARTS AND ACCESSORIES

For your own safety, the safety of others and the life of your machine





**MODEL SS-35  
30" BLADE SET-UP KIT  
P/N 50735K**



ITEM #	PART #	DESCRIPTION	QTY.
1	50735A	GUARD ASSY., BLADE 30" (INCLUDES ITEMS 2-16)	1
2	50735R	GUARD, BLADE 30", REAR ONLY	1
3	11617	HINGE, BUTT 3 X 3 X 7GA. S.S.	1
4	50735F	GUARD, BLADE 30", FRONT ONLY	1
5	10834	SCREW, CAP 1/4-20 X 1/2	4
6	10038	WASHER, LOCK 1/4	4
7	10602	WASHER, FLAT 1/4	1
8	57482	PIN & CABLE, 30" BLADE GUARD	1
9	10710	FITTING, SWIVEL 45, 1/4NPT, HYD.	2
10	50069	CLAMP, HOSE, SAE #6, ADJ. TO 13/16	4
11	50532	HOSE, WATER 1/2"ID X 2"L	2
12	10682	BARBED FITTING, "Y" 1/2"HOSE	1
13	10018	SCREW, CAP 1/4-20 X 3/4	1
14	10602	WASHER, FLAT 1/4 SAE	2
15	41115	FLAP, SPLASH 2-1/2 X 8	1
16	10015	NUT, LOCK 1/4-20	1
17	57405	ARBOR BLADE CAP 6"	1
18	50734	ARBOR BACKING PLATE 6"	1
19	50732	GUARD, LOWER PULLEY	1
20	50733	COVER, ARBOR	1
21	50724	SHEAVE 5.30"OD X 6GR.3V X SK	1
22	50725	BUSHING, SHEAVE SK X 1-7/16"BORE	1
23	10231	BELT 3VX-500	6



100 Thomas Johnson Drive, Frederick, MD 21702-4600 USA

Phone (301) 663-1600 • 1-800-638-3326

Fax (301) 663-1607 • 1-800-447-3326

Website: [www.edcoinc.com](http://www.edcoinc.com) • Email: [sales@edcoinc.com](mailto:sales@edcoinc.com)

Printed in USA

©2004