

STARTING SERIAL NO. 1001

PARTS LIST MANUAL

Model SS-16A



Self - Propelled 16" Concrete / Asphalt Saw



100 Thomas Johnson Drive, Frederick, MD 21702-4600 USA
Phone (301) 663-1600 • 1-800-638-3326
Fax (301) 663-1607 • 1-800-447-3326
Website: www.edcoinc.com • Email: sales@edcoinc.com

Printed in USA
©2001

READ AND UNDERSTAND THE OPERATORS INSTRUCTION MANUAL THOROUGHLY BEFORE ATTEMPTING TO OPERATE THIS EQUIPMENT. Death or serious injury could occur if this machine is used improperly.



SAFETY MESSAGES



The safety instructions are preceded by a graphic alert message of DANGER, WARNING, or CAUTION.



Indicates an imminent hazard which, if not avoided, will result in death or serious injury.



Indicates an imminent hazard which, if not avoided, can result in death or serious injury.



Indicates hazards which, if not avoided, could result in serious injury and or damage to the equipment.

GASOLINE

Powered Equipment



- Do not operate gasoline powered equipment without adequate ventilation. Carbon monoxide is an invisible, odorless gas that can kill.

ELECTRICAL

Powered Equipment



- ELECTRICAL HAZARD** - Be sure equipment is properly grounded. Failure to comply could kill or result in serious injury.



The engine exhaust from this product contains chemicals known to the State of California to cause cancer, birth defects or other reproductive harm.

GENERAL INSTRUCTIONS



- You must read and understand the operators instruction manual and all other manuals associated with this machine. For your safety and the safety of others around you, it is extremely important to fully understand how to operate this machine in the way it was intended. Different model machines or older/newer versions of the same model may have different parts and controls that you need to understand. If instructions are not readable or available DO NOT USE this machine and contact the factory for a replacement Manual.
- You must be able to physically handle the bulk weight and power of this machine. If not properly controlled this machine can cause death or serious injury.
- Do not operate this machine in an impaired mental state. You must be able to exercise good judgement and reactions to maintain a safe working environment.
- This is a "one person" machine which means only one operator can be operating the machine at any one time. For the safety of others, maintain a safe operating distance to other personnel. Your work area should be defined and appropriately marked so bystanders and coworkers do not stand or walk near this machine and end up seriously injured by flying debris or exposing them to harmful noise or dust.
- This equipment is for Commercial use. Although this is a "one person" machine your work team should understand how to shut this machine off and quickly get medical help if an accident strikes the operator.
- Keep all guards in place during operation. The guards are to provide protection from inadvertent contact with dangerous moving parts, pinch points, or hot surfaces.
- Wear appropriate Personal Protective Equipment (PPE) including safety glasses, safety boots, work gloves, respiratory protection, hearing protection, and head protection. Do not wear loose clothing that can get tangled in moving parts. Failure to do so could result in dismemberment or death. **Wear an approved respirator when removing hazardous materials or when grinding/cutting dry materials. Some dust particles such as concrete dust can contain silicate particles which can cause silicosis (a very serious lung disease). Contact NIOSH or OSHA for further details. When wet grinding/cutting, avoid contact with the concrete/asphalt slurry which can cause serious skin irritations.**
- You must maintain this machine per the maintenance schedule in the operator manual. Remember before adjusting, servicing, or fueling this machine, disconnect the source of power to the machine by disconnecting the spark plug (Gas models), or by unplugging the electrical power cord (electric models) or air hose (Pneumatic models) AT THE MACHINE so you can assure yourself it remains unplugged while you are working on it. Do not modify this machine. Use only genuine EDCO parts and accessories. Repairs and service should be performed by approved EDCO dealers or authorized technicians.
- You should look carefully around the area before you begin work so you can identify potential hazards such as deck inserts, pipes, columns, openings, electrical cords or outlets, or any other objects protruding from the slab surface.
- This machine has no brain so you must use your own. There is no substitute for safety. The safety decals on the machine are to serve as a reminder for information you must already know before you begin using this machine. Take a moment to reread the safety decals each time you use the machine. If your machine is missing any decals, contact the factory for a replacement (EDCO 1-800-638-3326).

100 Thomas Johnson Drive, Frederick, MD 21702-4600 USA

Printed in USA

©2001

Page 2

Phone (301) 663-1600 • 1-800-638-3326

Fax (301) 663-1607 • 1-800-447-3326

Website: www.edcoinc.com • Email: sales@edcoinc.com

PARTS LIST MANUAL

MODEL SS- 16A

Section	Page Number
Safety Messages & General Instructions	2
How To Order Replacement Parts	3
Illustration #1 - Frame Grouping	4
Parts Listing for Frame Grouping	5
Illustration # 2 - Arbor & Blade Guard Grouping	6
Parts Listing for Arbor & Blade Guard Grouping	7
Illustration # 3 - Transmission Grouping	8
Parts Listing for Transmission Grouping	9
Illustration # 4 - Engine Grouping	10
Parts Listing for Engine Grouping	11
Illustration # 5 - Motor Grouping	12
Parts Listing for Motor Grouping	13
Illustration # 6 - Belt Drive Grouping	14
Parts Listing for Belt Drive Grouping	15
Limited Equipment Warranty	Back Cover

SS-16A CONCRETE/ASPHALT SAWS

PART NO.	MODEL	POWER OPTION
32800	SS16A-13H	HONDA 13HP GX390
32900	SS16A-12K	KOHLER COMMAND PRO 12HP CS12T
33300	SS16A-5E/3PH	BALDOR 5HP, 3 PHASE, 60 Hz, 230/460 VOLTS, 12/6 AMPS
33400	SS16A-5E/1PH	BALDOR 5HP, 1 PHASE, 60 Hz, 230 VOLTS, 19.5 AMPS

HOW TO ORDER REPLACEMENT PARTS

- To insure product safety and reliability, always use genuine EDCO replacement parts when making repairs to the equipment.

- When calling for parts, specify the MODEL and SERIAL NUMBER of the machine which can be found on the NAME PLATE. Keep that information in the space provided. In addition to this information, give part number, description and quantity as listed on the parts list to your parts representative.

- Please note: Due to improvements and changes in the equipment, the illustrations shown may be different than the actual machine.

FILL IN INFORMATION BELOW

Date of Purchase _____

Name of Machine _____

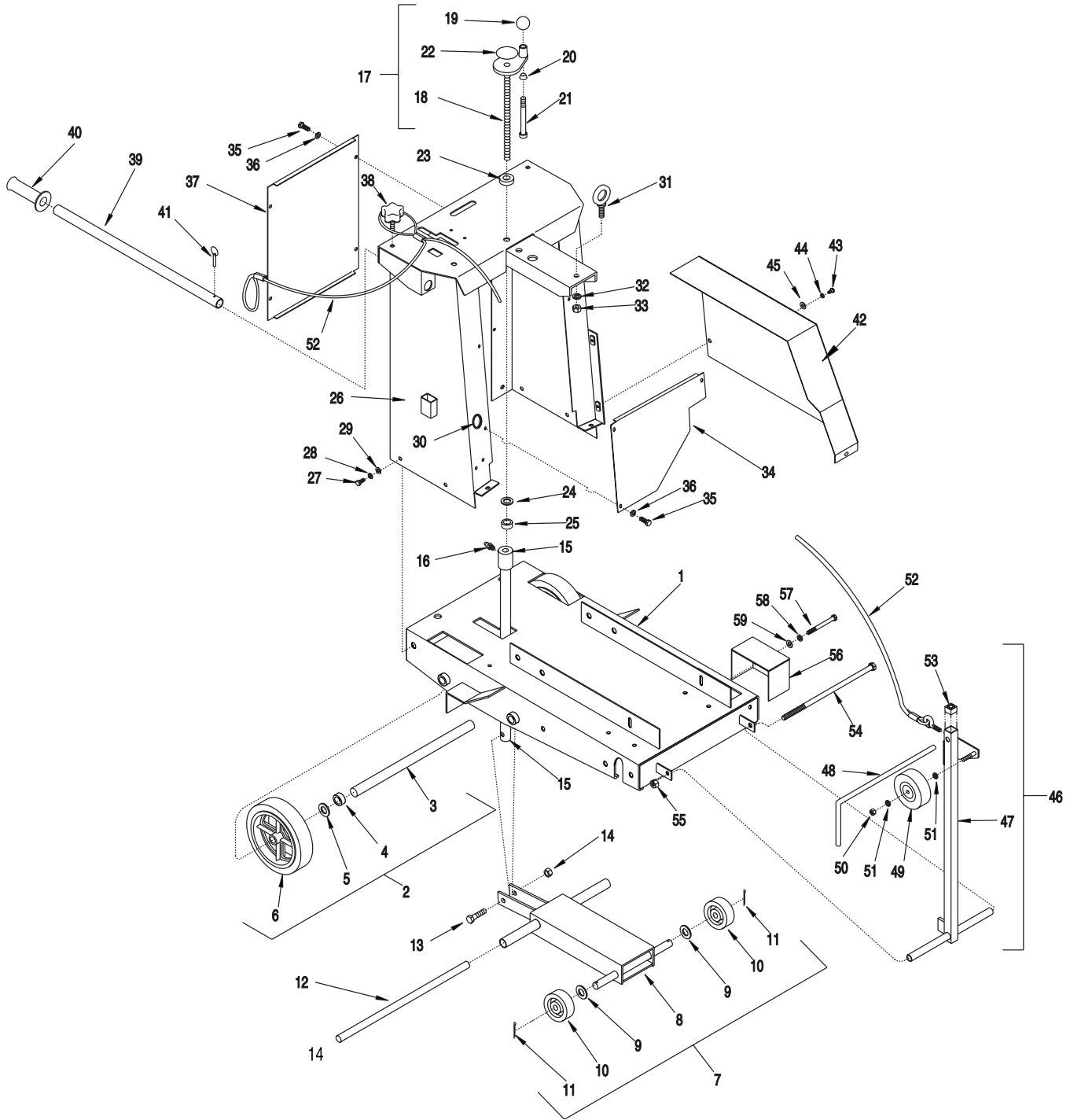
Model # _____

Serial # _____

Belt Size(s) _____

Toll Free: 1-800-638-3326
 FAX: 1-800-447-3326
 email: sales@edcoinc.com
www.edcoinc.com

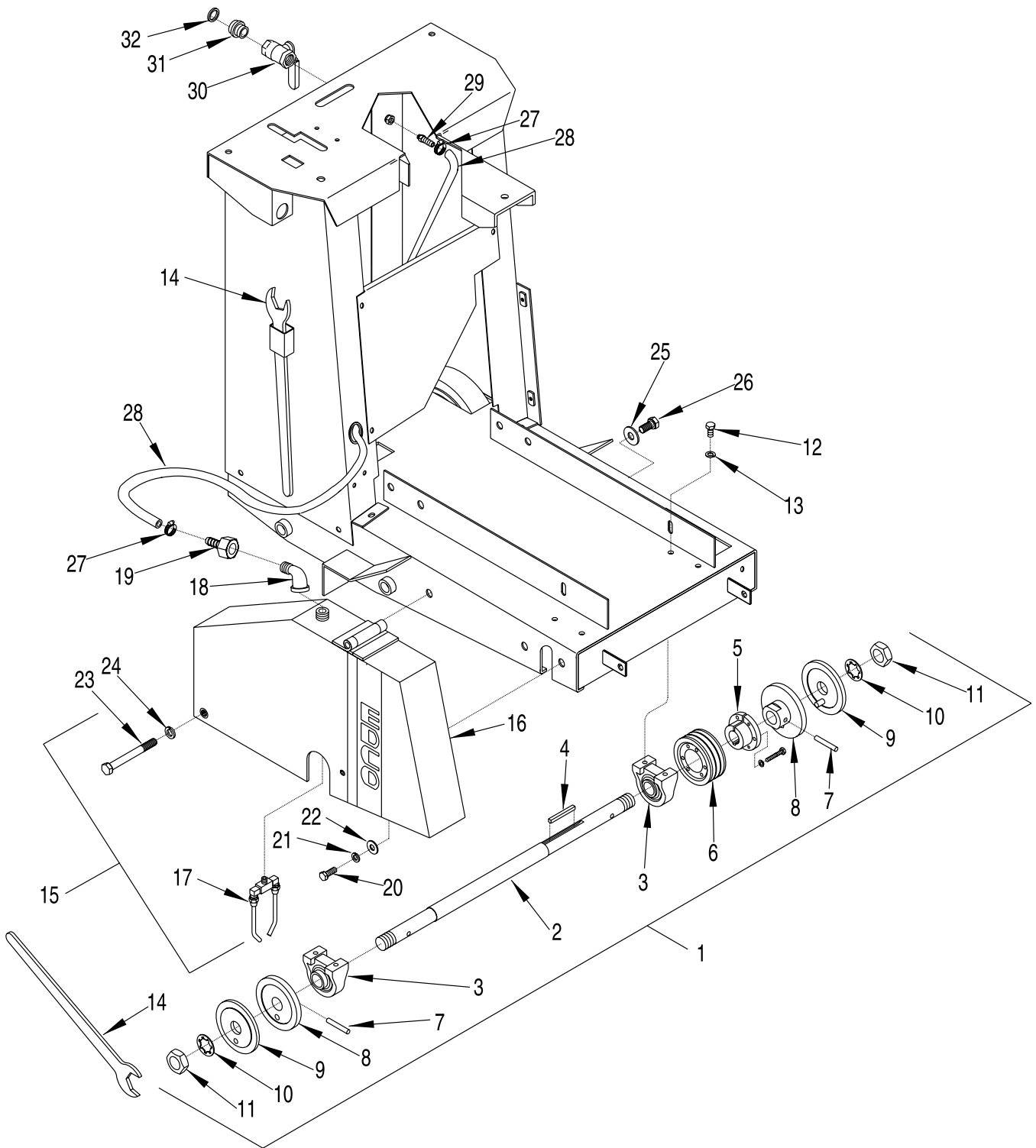
ILLUSTRATION # 1: FRAME GROUPING



PARTS LISTING - ILLUSTRATION # 1: FRAME GROUPING

ITEM#	PART #	DESCRIPTION	QTY.	ITEM#	PART #	DESCRIPTION	QTY.
1	51301	MAIN FRAME	1	35	10018	SCREW, CAP 1/4-20 x 3/4	7
2	51219A	AXLE & WHEEL SUBASSY. (ITEMS 3-6)	1	36	10038	WASHER, LOCK 1/4	7
3	51219	SHAFT 3/4" DIA. x 19"L	1	37	51304	GUARD, CONSOLE REAR	1
4	10428	COLLAR, LOCKING 3/4" ID	2	38	51230	KNOB, STAR CLAMPING w/ 3/8-16 x 1 STUD	2
5	10009	WASHER, FLAT 3/4	2	39	51024	HANDLE BAR 24"	2
6	51028	WHEEL 8 x 2 x 3/4" BRG.	2	40	61108	GRIP, HAND 1" MODEL SX	2
7	51302A	FORK SUBASSEMBLY (ITEMS 8-11)	1	41	10145	PIN, DETENT RING 3/16 x 1-5/16 EFF. LG.	2
8	51302	FORK	1	42	51305	COVER, BELT	1
9	10009	WASHER, FLAT 3/4	2	43	10018	SCREW, CAP 1/4-20 x 3/4	3
10	52001	WHEEL 4 x 1-1/2 x 3/4" BRG., ALUM. / RUBBER	2	44	10038	WASHER, LOCK 1/4	3
11	10306	PIN, COTTER 3/16 x 1-1/4	2	45	10602	WASHER, FLAT 1/4	3
12	51219	SHAFT 3/4" DIA. x 19" L	1	46	56210A	GUIDE BAR SUBASSEMBLY (ITEMS 47-53)	1
13	10347	SCREW, CAP 1/2-20 x 2-1/4	1	47	56210	GUIDE BAR	1
14	10205	NUT, LOCK 1/2-20	1	48	51012	GUIDE POINTER, FRONT	1
15	51310	LINKAGE, CUT CONTROL	1	49	50024	WHEEL 4 x 1-3/8 x 3/8 BORE	1
16	10808	FITTING, GREASE 1/4-28 STRAIGHT	1	50	10004	NUT, LOCK 3/8-24	1
17	51075A	HANDWHEEL SUBASSEMBLY (ITEMS 18-22)	1	51	10025	WASHER, FLAT 3/8	2
18	51075	HANDWHEEL, LG. w/ 5/8-8 x 13" ROD	1	52	51317	ROPE, GUIDE BAR (EYE BOLT INCLUDED)	1
19	14023	KNOB, BALL 1-3/8 DIA. w/ 1/2-13 THD.	1	53	51078	PLUG, SQ. TUBE 1 x 14 GA., BLACK	1
20	50550	SLEEVE FOR 1/2" CAPSCREW, TAPERED	1	54	10421	SCREW, CAP 1/2-13 x 13	1
21	10346	SCREW, SKT. HD. 1/2-13 x 4-1/2	1	55	10407	NUT, LOCK 1/2-13	1
22	61106	DECAL, CUT CONTROL DN/UP (LARGE)	1	56	51206	COVER, ARBOR	1
23	85005	BEARING, BALL 5/8 ID x 1-1/2 OD, THRUST	1	57	10318	SCREW, CAP 3/8-16 x 3-3/4	2
24	10073	WASHER, FLAT 5/8	1	58	10811	WASHER, LOCK 3/8	2
25	10096	COLLAR, LOCKING 5/8" ID	1	59	10025	WASHER, FLAT 3/8	2
26	51303	CONSOLE	1				
27	10053	SCREW, CAP 5/16-18 x 3/4	8				
28	10801	WASHER, LOCK 5/16	8				
29	10213	WASHER, FLAT 5/16	8				
30	57149	GROMMET 1-1/4" ID x 1/8" GRV. x 1-1/2" GD.	1				
31	10837	BOLT, EYE 1/2-13 x 1-1/2 x 1-1/8 ID	1				
32	10312	WASHER, FLAT 1/2	1				
33	10155	NUT, NYLON LOCK 1/2-13	1				
34	51308	GUARD, CONSOLE FRONT	1				

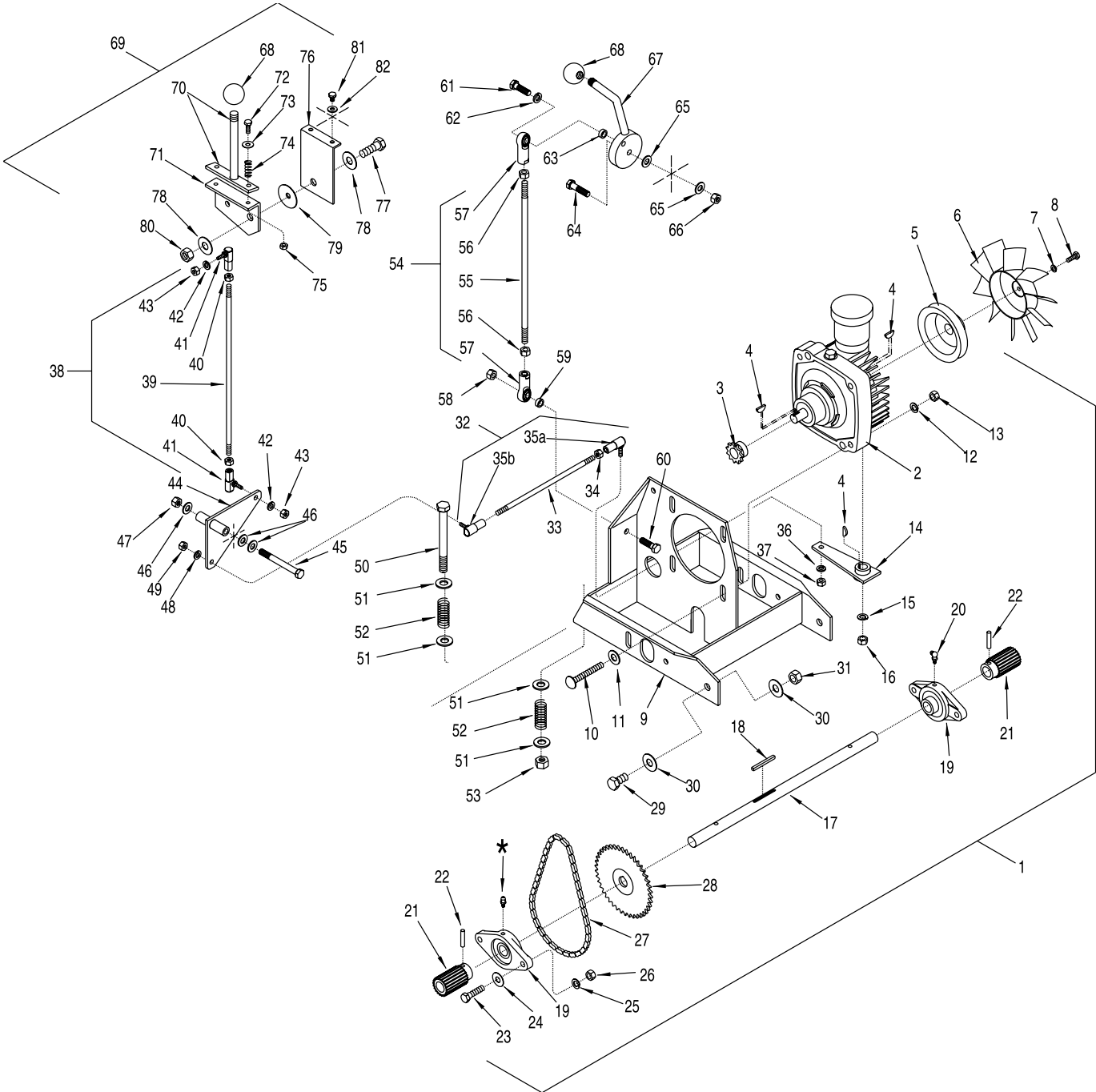
ILLUSTRATION # 2 : ARBOR & BLADE GUARD GROUPING



PARTS LISTING - ILLUSTRATION # 2: ARBOR & BLADE GUARD GROUPING

ITEM#	PART#	DESCRIPTION	QTY.
1	56208B	ARBOR SUBASSEMBLY (INCLUDES ITEMS 2-11)	1
2	56208	ARBOR SHAFT 23-3/8" L	1
3	50222	BEARING, BALL 1" TAP PILLOW BLOCK	2
4	10071	KEY 1/4" SQ. x 2-1/2	1
5	10076	BUSHING, SHEAVE SH x 1" BORE	1
6	10539	SHEAVE, 3.65" OD x 3Gr.3V x SH	1
7	10211	PIN, ROLL 5/16 x 2	2
8	56026	ARBOR BACKING PLATE 4" DIA.	2
9	56025	ARBOR BLADE RETAINING CAP 4" OD w/1" HOLE	2
10	55009	WASHER, LOCK, INTERNAL TOOTH 1"	2
11	50019	NUT, JAM 1-14	2
12	10907	SCREW, CAP 3/8-16 x 3/4	4
13	10811	WASHER, LOCK 3/8	4
14	50445	WRENCH, ARBOR 1-1/2	2
15		BLADE GUARD SUBASSEMBLY (ITEMS 16-19)	1
	51306C	14-16" (STANDARD)	
	51207C	18-20" (OPTIONAL)	
16		BLADE GUARD	1
	51306	14-16" (STANDARD)	
	51207	18-20" (OPTIONAL)	
17	51026	NOZZLE, COOLANT	1
18	10724	ELBOW, STREET 1/2 NPT x 90° (BLACK)	1
19	10729	BARB, 3/8" HOSE x 1/2 FPT	1
20	10055	SCREW, CAP 3/8-16 x 1	1
21	10811	WASHER, LOCK 3/8	1
22	10025	WASHER, FLAT 3/8	1
23	10409	SCREW, CAP 1/2-20 x 4-1/2	1
24	10045	WASHER, LOCK 1/2	1
25	10312	WASHER, FLAT 1/2	1
26	10304	SCREW, CAP 1/2-20 x 1	1
27	50069	CLAMP, HOSE, SIZE M6, ADJ. to 13/16"	2
28	51318	HOSE, WATER 3/8" ID x 50" L	1
29	50075	BARB, 3/8 HOSE x 1/4 MPT	1
30	10711	VALVE, BALL 1/2 FPT	1
31	80021	CONN., SWIVEL FEMALE 3/4 HOSE x 1/2 MPT	1
32	10070	WASHER, HOSE 3/4	1

ILLUSTRATION # 3 : TRANSMISSION GROUPING



*GREASE FITTING INCLUDED WITH BEARING

PARTS LISTING - ILLUSTRATION # 3: TRANSMISSION GROUPING

ITEM #	PART #	DESCRIPTION	QTY.	ITEM #	PART #	DESCRIPTION	QTY.
1	51209A	TRANS. SUBASSY. w/ DRIVE SHAFT (ITEMS 2-26)	1	41	10840	BALL JOINT ASSY. 5/16-24 R.H. THREAD	2
2	50061	TRANSMISSION, HYDROSTATIC	1	42	10801	WASHER, LOCK 5/16	2
3	50048	SPROCKET #3511 x .67" BORE	1	43	10424	NUT, 5/16-24	2
4	50071	KEY, WOODRUFF 1/8 x 1/2 (#404)	3	44	51214	BELL CRANK, DRIVE LINKAGE	1
5	50062	SHEAVE, HYD. TRANS. 4" OD x 1 Gr. x .671B	1	45	10382	SCREW, CAP 3/8-24 x 3-1/2	1
** 6	50266	FAN BLADE w/ PLATE 7", TRANSMISSION	1	46	10025	WASHER, FLAT 3/8	3
** 7	10038	WASHER, LOCK 1/4	1	47	10004	NUT, LOCK 3/8-24	1
** 8	10018	SCREW, CAP 1/4-20 x 3/4	1	48	10801	WASHER, LOCK 5/16	1
9	51209	MOUNT, TRANSMISSION	1	49	10424	NUT 5/16-24	1
10	10909	BOLT, CARRIAGE 3/8-16 x 3	4	50	10376	SCREW, CAP 1/2-13 x 5	2
11	10040	WASHER, GARRET 1" OD x 17/32" ID x .054T	4	51	10312	WASHER, FLAT 1/2	8
12	10811	WASHER, LOCK 3/8	4	52	51035	SPRING, COMP. .828" OD x 2" FL	4
13	10404	NUT 3/8-16	4	53	10407	NUT, LOCK 1/2-13	2
14	51223	TRANSMISSION CONTROL ARM	1	54	51309A	CLUTCH LINKAGE SUBASSY. (ITEMS 55-57)	1
15	10811	WASHER, LOCK 3/8	1	55	51309	LINKAGE, ROD 3/8 x 17" L	1
16	10404	NUT 3/8-16	1	56	10014	NUT, 3/8-24	2
17	51217	JACKSHAFT 3/4 X 17"	1	57	10919	ROD END, FEMALE 3/8-24 R.H. THREAD	2
18	10168	KEY 3/16" SQ. x 2	1	58	10004	NUT, LOCK 3/8-24	1
19	50049	BEARING, BALL 3/4" 2-HOLE FLANGE	2	59	10113	SPACER 9/16 OD x 3/8 ID x 7/32	1
20	10961	GREASE FITTING 1/4-28 x 90	1	60	10309	SCREW, CAP 3/8-24 x 1-1/4	1
21	51218	DRIVER, REAR WHEEL	2	61	10816	SCREW, CAP 3/8-24 x 1-1/2	1
22	10024	PIN, ROLL 1/4" x 1-1/4"	2	62	10811	WASHER, LOCK 3/8	1
23	10816	SCREW, CAP 3/8-24 x 1-1/2	4	63	10113	SPACER 9/16 OD x 3/8 ID x 7/32	1
24	10025	WASHER, FLAT 3/8	4	64	10816	SCREW, CAP 3/8-24 x 1-1/2	1
25	10811	WASHER, LOCK 3/8	4	65	10025	WASHER, FLAT 3/8	2
26	10014	NUT 3/8-24	4	66	10004	NUT, LOCK 3/8-24	1
27	51059	CHAIN, #35 x 22-3/8" LOA	1	67	51076	LEVER, CLUTCH	1
28	51037	SPROCKET #35B42 x 3/4" BORE	1	68	14023	KNOB, BALL 1-3/8" RD w/ 1/2-13 THD.	2
29	10304	SCREW, CAP 1/2-20 x 1	1	69	51210A	DRIVE LEVER SUBASSY. (ITEMS 70-80)	1
30	10312	WASHER, FLAT 1/2	2	70	51210	LEVER, DRIVE	1
31	10205	NUT, LOCK 1/2-20	1	71	51235	PLATE, DRIVE LEVER PRESSURE	1
32	51213A	LINKAGE SUBASSY., DRIVE HORIZ. (ITEMS 33-35)	1	72	10905	SCREW, CAP 1/4-20 x 1-1/4	2
33	51213	LINKAGE, ROD 5/16 x 9" L	1	73	10602	WASHER, FLAT 1/4	2
34	10424	NUT 5/16-24	2	74	50609	SPRING, COMP., .437 OD x 1" FL.	2
35a	10840	BALL JOINT ASSY. 5/16-24 R.H. THREAD	1	75	10015	NUT, LOCK 1/4-20	2
35b	10840L	BALL JOINT ASSY. 5/16-24 L.H. THREAD	1	76	51211	MOUNT BRACKET, DRIVE LEVER	1
36	10801	WASHER, LOCK 5/16	1	77	10304	SCREW, CAP 1/2-20 x 1	1
37	10424	NUT 5/16-24	1	78	10312	WASHER, FLAT 1/2	2
38	51212A	LINKAGE SUBASSY., DRIVE VERT. (ITEMS 39-41)	1	79	50428	WASHER, FIBER, 2-1/4 OD x 1/2 ID x 1/8	
39	51212	LINKAGE, ROD 5/16 x 13" L	1				
40	10424	NUT 5/16-24	2				

** NOT PART OF SUBASSEMBLY

100 Thomas Johnson Drive, Frederick, MD 21702-4600 USA

Phone (301) 663-1600 • 1-800-638-3326

Fax (301) 663-1607 • 1-800-447-3326

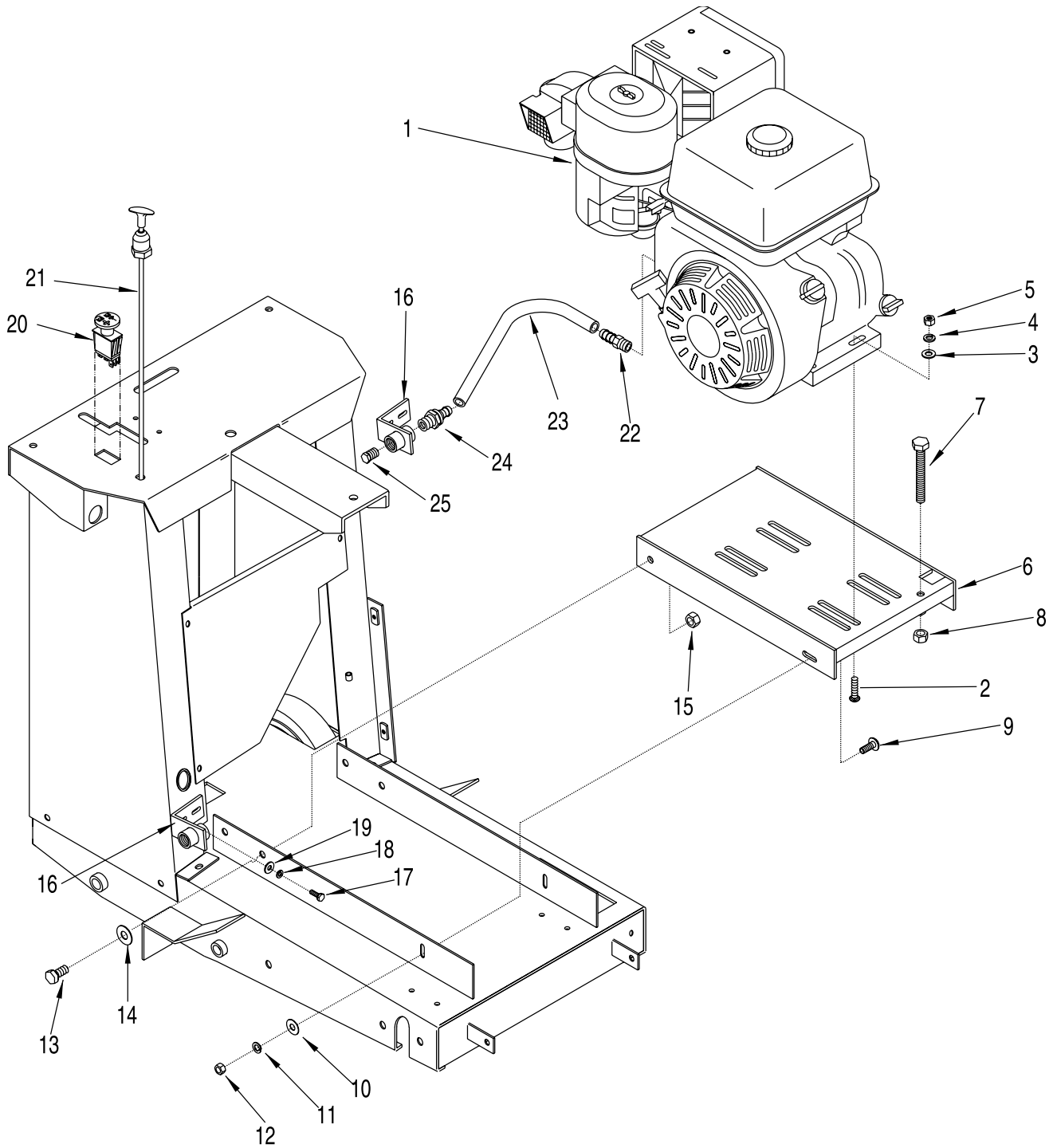
Website: www.edcoinc.com • Email: sales@edcoinc.com

Printed in USA

©2001

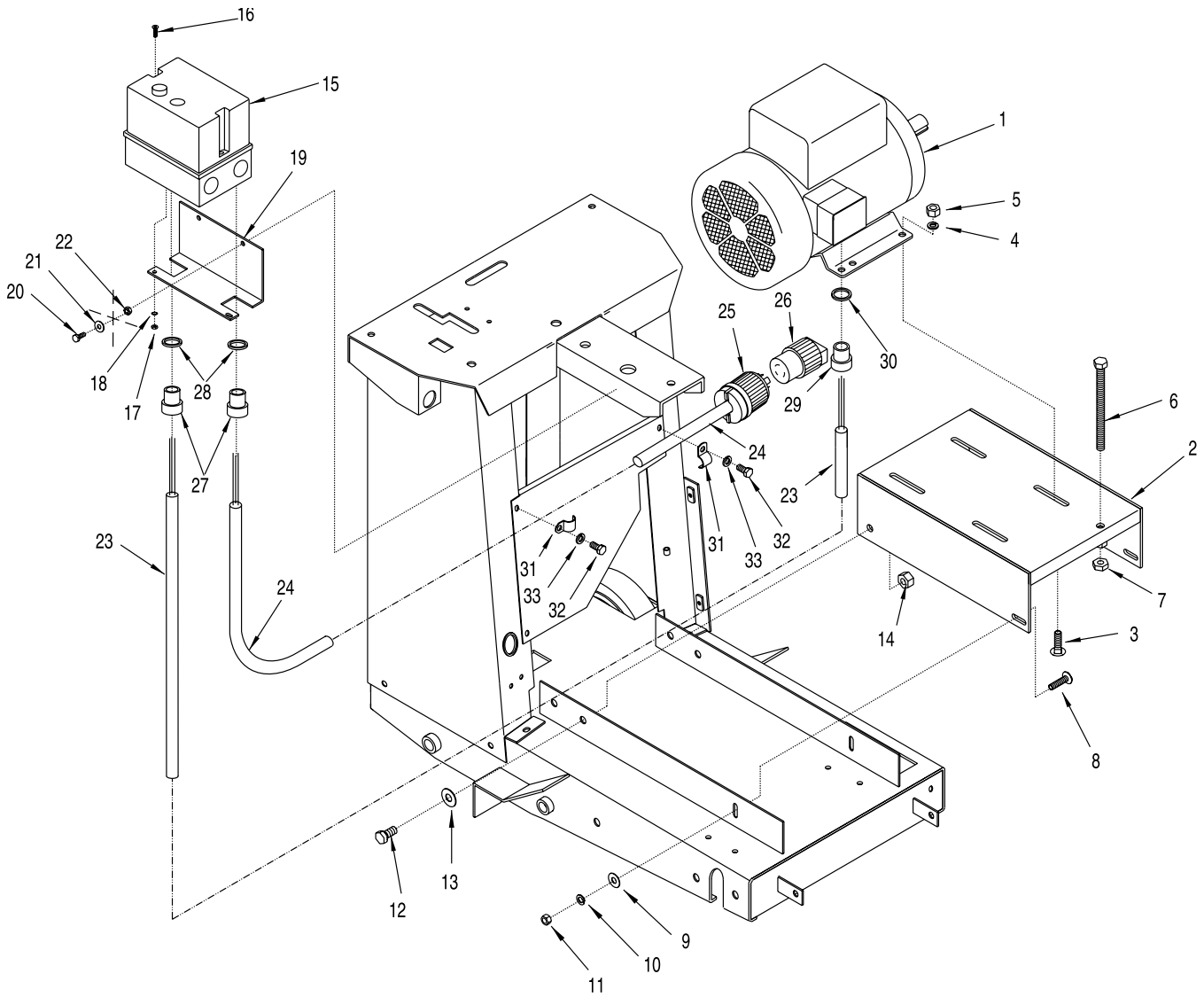
Page 9

ILLUSTRATION # 4 : ENGINE GROUPING



PARTS LISTING - ILLUSTRATION # 4: ENGINE GROUPING			
ITEM #	PART #	DESCRIPTION	QTY.
1		ENGINE	1
	15029	HONDA, 13HP GX390 (SHOWN)	
	15045	KOHLER 12HP COMMAND PRO CS12T	
2	10087	BOLT, CARRIAGE 3/8-16 x 1-3/4	4
3	10025	WASHER, FLAT 3/8	4
4	10811	WASHER, LOCK 3/8	4
5	10404	NUT 3/8-16	4
6	51208	MOUNT, ENGINE	1
7	10392	BOLT, TAP 1/2-13 x 4 (FULL THREAD)	1
8	10417	NUT 1/2-13	1
9	10802	BOLT, CARRIAGE 3/8-16 x 1	2
10	10025	WASHER, FLAT 3/8	2
11	10811	WASHER, LOCK 3/8	2
12	10404	NUT 3/8-16	2
13	10304	SCREW, CAP 1/2-20 x 1"	2
14	10312	WASHER, FLAT 1/2	2
15	10205	NUT, LOCK 1/2-20	2
16	57159	BRACKET, OIL DRAIN	1
17	10018	SCREW, CAP 1/4-20 x 3/4	2
18	10038	WASHER, LOCK 1/4	2
19	10602	WASHER, FLAT 1/4	2
20	51225	SWITCH, EMERGENCY STOP	1
21	51081	CABLE, TURN-TO-LOCK CONTROL, 72"	1
22	11542	BARB, PUSH-ON 3/8 HOSE x 12mm x 1.5 MALE	1
23	51313	HOSE, PUSH-ON 1/2" ID x 14" L	1
24	80061	BARB, PUSH-ON, 1/2" HOSE x 1/2 MPT	1
25	50552	PLUG, PIPE 1/2" NPT (BRASS)	1

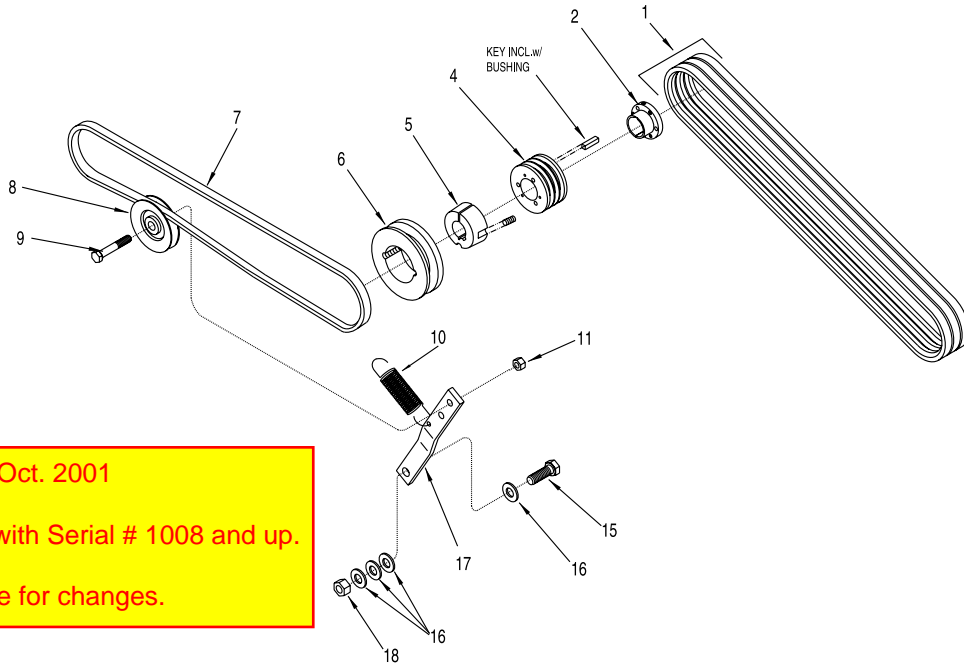
ILLUSTRATION # 5 : MOTOR GROUPING



PARTS LISTING - ILLUSTRATION # 5: MOTOR GROUPING			
ITEM #	PART #	DESCRIPTION	QTY.
1		MOTOR	1
	81026	BALDOR, 5 HP - 1 PH, 60 Hz, 3450 RPM	
	81022	BALDOR, 5 HP - 3 PH, 60 Hz, 3450 RPM	
2	51314	MOUNT, MOTOR	1
3	10802	BOLT, CARRIAGE 3/8 - 16 x 1"	4
4	10811	WASHER, LOCK 3/8	4
5	10404	NUT, 3/8-16	4
6	51067	BOLT, ALLTHREAD ROD 1/2-13 x 6 1/2	1
7	10417	NUT 1/2-13	1
8	10802	BOLT, CARRIAGE 3/8-16 x 1"	2
9	10025	WASHER, FLAT 3/8	2
10	10811	WASHER, LOCK 3/8	2
11	10404	NUT 3/8-16	2
12	10304	SCREW, CAP 1/2-20 x 1	2
13	10312	WASHER, FLAT 1/2	2
14	10205	NUT, LOCK 1/2-20	2
15		STARTER, S & S	1
	16306	CAK7-16-220W-MF-C2 (3 PH, 60 Hz, 230 VOLTS)	
	16301	CAK7-9-380-ME-C2 (3 PH, 60 Hz, 460 VOLTS)	
	16316	CBK7-30-220W-MSG-C2 (1 PH, 60Hz, 230 VOLTS)	
16	10362	SCREW, MACH. 8-32 x 3/4	2
17	10462	NUT 8-32	2
18	10461	WASHER, INT. TOOTH # 8	2
19	51064	MOUNT BRKT., STARTER	1
20	10031	SCREW, CAP 1/4-20 x 1"	2
21	10602	WASHER, FLAT 1/4	2
22	10861	NUT, KEPS 1/4-20	2
*23		WIRE HARNESS, STARTER/MOTOR	1
	56118	10/3 x 46"	
	56119	12/4 x 46"	
*24		WIRE HARNESS, STARTER/PLUG	1
	51315	10/3 x 36"	
	51316	12/4 x 36"	
*25	40037	PLUG, LOCKING 20 A/250V	1
*26	40000	PLUG CONNECTOR, LOCKING 20A/250V	1
27	41053	CONNECTOR, STRAIN RELIEF 1/2 NPT x .625 - .750"	2
28	10790	CONDUIT LOCKNUT 1/2 NP	2
29	10605	CONNECTOR, STRAIN RELIEF 3/4 NPT x .650 - .750"	1
30	10704	CONDUIT LOCKNUT 3/4 NP	1
31	41124	CLAMP, CONDUIT 1/2" EMT (SNAP-STRAP)	3
32	10018	SCREW, CAP 1/4-20 x 3/4	3
33	10038	WASHER, LOCK 1/4	3
* NOTE *			
PLUG AND CONNECTOR (ITEMS 25 & 26) ARE NOT SUPPLIED ON 3 PHASE UNITS.			
1 - PHASE UNIT USE 10/3 WIRE HARNESS		3 - PHASE UNIT USE 12/4 WIRE HARNESS	

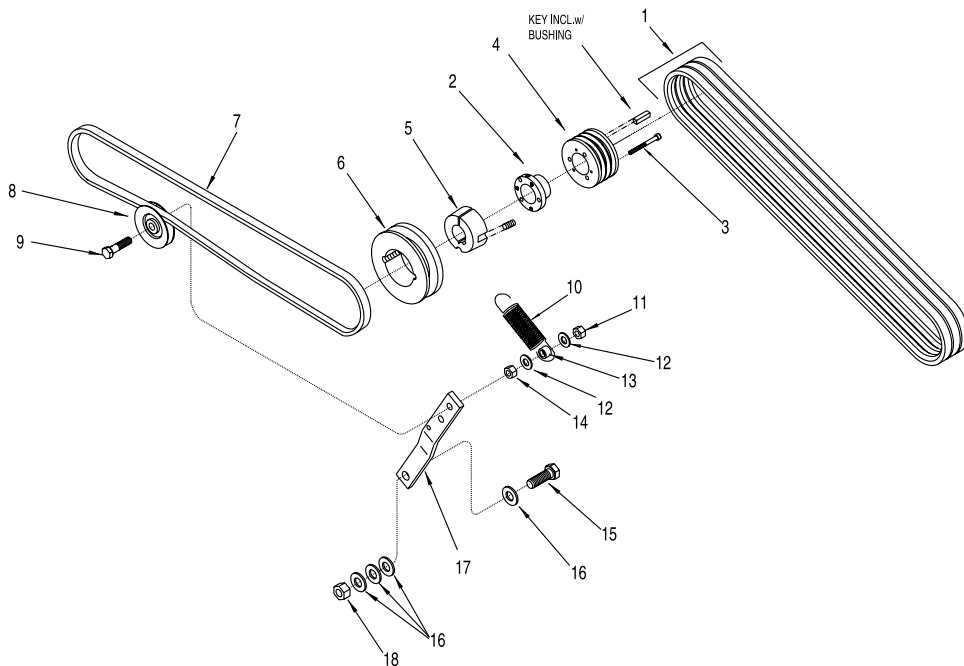
ILLUSTRATION # 6 : BELT DRIVE GROUPING

HONDA & KOHLER



Revised Oct. 2001
Starting with Serial # 1008 and up.
Click here for changes.

BALDOR



PARTS LISTING - ILLUSTRATION # 6: BELT DRIVE GROUPING			
ITEM #	PART #	DESCRIPTION	QTY.
1		BELT (REFER TO NAME PLATE ON MACHINE)	3
	93020	3VX-315 (HONDA)	
	10201	3VX-335 (KOHLER)	
	10269	3VX-400 (BALDOR)	
2		BUSHING, SHEAVE	1
	10557	JA x 1" BORE (ENGINES)	
	10533	JA x 1-1/8" BORE (MOTOR)	
3	11584	SCREW, SKT. HD. 10-24 x 2 *BALDOR ONLY*	4
4	51312	SHEAVE 2.8"OD x 3 Gr. 3V x JA	1
5		BUSHING, TAPER-LOCK	1
	10544	1" BORE (ENGINES)	
	10529	1-1/8" BORE (MOTOR)	
6	10528	SHEAVE, 4.15" OD x 1 Gr.AB x TAPER-LOCK	1
7		BELT (REFER TO NAME PLATE ON MACHINE)	
	51311	A-50 (HONDA)	
	51234	A-47 (KOHLER)	
	10281	A-41 (BALDOR)	
8		PULLEY, IDLER	1
	51226	3.125" x 3/4" FLAT x 3/8 BRG. (ENGINES)	
	51258	2.125" x 3/4" FLAT x 3/8 BRG. (MOTOR)	
9	10816	SCREW, CAP 3/8-24 x 1-1/2 (HONDA & KOHLER)	1
	10336	SCREW, CAP 3/8-24 x 2-1/4 (BALDOR)	1
10	50074	SPRING, EXT. 1" OD x 3-15/16" INSIDE ENDS	1
11	10004	NUT, LOCK 3/8-24	1
12	10025	WASHER, FLAT 3/8 * BALDOR ONLY *	2
13	10113	SPACER, STEEL 9/16"OD x 3/8"ID x 7/32" * BALDOR ONLY * 1	1
14	10014	NUT 3/8-24 * BALDOR ONLY *	1
15	10308	SCREW, CAP 1/2-20 x 1-1/2	1
16	10312	WASHER, FLAT 1/2	3
17	51052	IDLER ARM	1
18	10205	NUT, LOCK 1/2-20	1

LIMITED EQUIPMENT WARRANTY

Equipment Development Company, Inc. herein referred to as EDCO warrants that each new unit manufactured by EDCO to be free from defects in material and workmanship in normal use and service for a period of (1) one year (except in the case of the cutter drum assembly on all model concrete asphalt planes, in which case the warranty period shall be 90 days) from date of shipment to the original retail or equipment rental center owner.

EDCO will, at its option, repair or replace, at the EDCO factory or at a point designated by EDCO any part, which shall appear to the satisfaction of EDCO inspection to have been defective in material or workmanship.

This warranty, does not apply to failure occurring as a result of abuse, misuse, negligent repairs, corrosion, erosion, normal wear and tear, alterations or modifications made to the product without express written consent of EDCO: or failure to follow the recommended operating practices and maintenance procedures as provided in the products operating and maintenance manuals.

This warranty does not obligate EDCO to bear any transportation charges in connection with the replacement or repair of defective parts. This warranty does not obligate EDCO to bear any expense for travel time or of personnel in connection with any service calls.

Accessories or equipment furnished and installed on the product by EDCO but manufactured by others, including but not limited to engines, motors, electrical equipment, transmissions, etc., shall carry the accessory manufacturers' own warranty.

THIS WARRANTY IS IN LIEU OF ALL OTHER WARRANTIES, EXPRESSED OR IMPLIED, OR STATUTORY, INCLUDING ANY WARRANTIES OF MERCHANTABILITY OR OF FITNESS FOR A PARTICULAR PURPOSE.

LIABILITY LIMITATIONS

The remedies of the user set forth under provisions of warranty outlined above are the exclusive and total liability of EDCO with the respect to their sale or the equipment and service furnished hereunder, in connection with the performance or breach thereof, or from the sale, delivery, installation, repair or technical direction covered by or furnished under the sale, whether based on contract, warranty, negligence, indemnity, strict liability, or otherwise shall not exceed the purchase price of the unit of equipment upon which such liability is based.

EDCO will not in any event be liable to the user, any successors in interest or any beneficiary or assignee relating to this sale for any consequential, incidental, indirect, special or punitive damages arising out of this sale or any breach thereof, or any defects on, or failure of, or malfunction of the equipment under this sale based upon loss of use, lost profits or revenue, interest, lost goodwill, work stoppage, impairment of other goods, loss by reason of shutdown or non-operation, increased expenses of operation of the equipment, cost of purchase or replacement power of claims of users or customers of the user for service interruption whether or not such loss or damage is based on contract, warranty, negligence, indemnity, strict liability, or otherwise.

EDCO reserves the right to modify, alter and improve any part or parts without incurring any obligation to replace any part or parts previously sold without such modified, altered or improved part or parts.

No person is authorized to give any other warranty or to assume any additional obligation on EDCO's behalf unless made in writing and signed by an officer of EDCO.

Equipment Development Company, Inc.

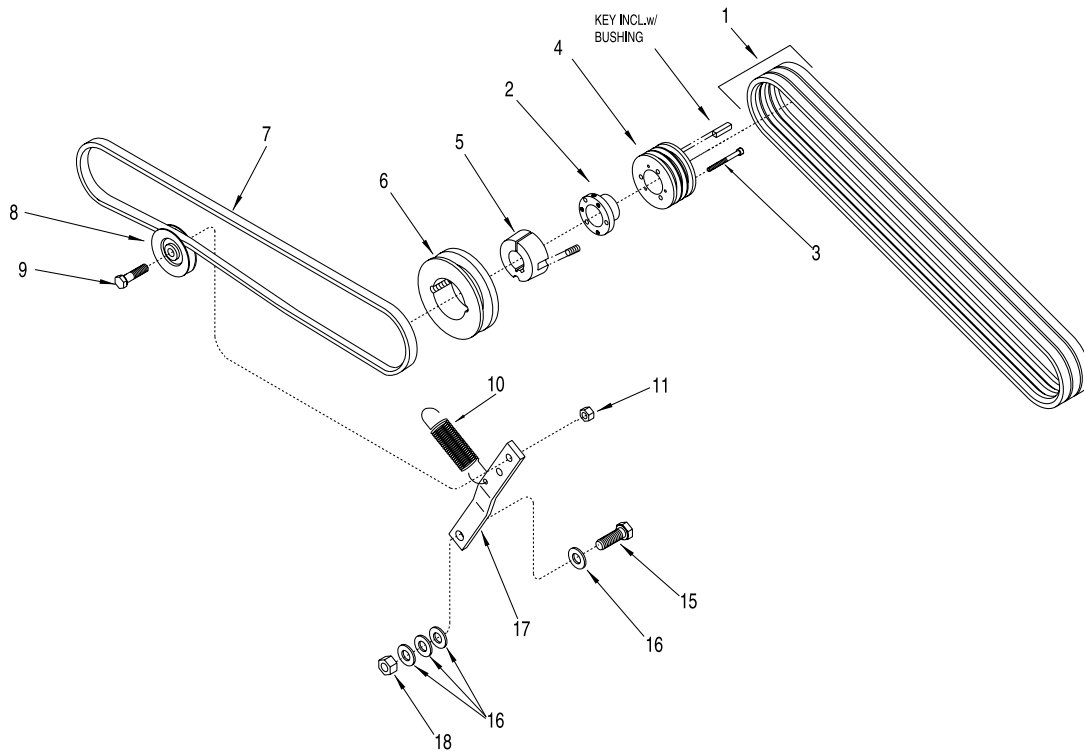
USE ONLY GENUINE EDCO PARTS AND ACCESSORIES

For your own safety, the safety of others and the life of your machine



SS-16A 13HP HONDA BELT DRIVE CHANGE

STARTING SERIAL NO. 1008



ITEM #	PART #	DESCRIPTION	QTY.
1	10201	BELT 3VX-335 (REFER TO NAME PLATE ON MACHINE)	3
2	10076	BUSHING, SHEAVE SH x 1" BORE	1
3	11584	SCREW, SKT. HD. 10-24 x 2	4
4	10539	SHEAVE 3.65 x 3Gr. x SH	1
5	10544	BUSHING, TAPER-LOCK, 1" BORE	1
6	10528	SHEAVE, 4.15" OD x 1 Gr.AB x TAPER-LOCK	1
7	51311	BELT A-50 (REFER TO NAME PLATE ON MACHINE)	
8	51226	PULLEY, IDLER, 3.125" x 3/4" FLAT x 3/8 BRG.	1
9	10816	SCREW, CAP 3/8-24 x 1-1/2	1
10	50074	SPRING, EXT. 1" OD x 3-15/16" INSIDE ENDS	1
11	10004	NUT, LOCK 3/8-24	1
12	10025	WASHER, FLAT 3/8	2
13	10113	SPACER, STEEL 9/16"OD x 3/8"ID x 7/32"	1
14	10014	NUT 3/8-24	1
15	10308	SCREW, CAP 1/2-20 x 1-1/2	1
16	10312	WASHER, FLAT 1/2	3
17	51052	IDLERARM	1
18	10205	NUT, LOCK 1/2-20	1



100 Thomas Johnson Drive, Frederick, MD 21702-4600 USA
 Phone (301) 663-1600 • 1-800-638-3326
 Fax (301) 663-1607 • 1-800-447-3326
 Website: www.edcoinc.com • Email: sales@edcoinc.com

Printed in USA
 ©2001