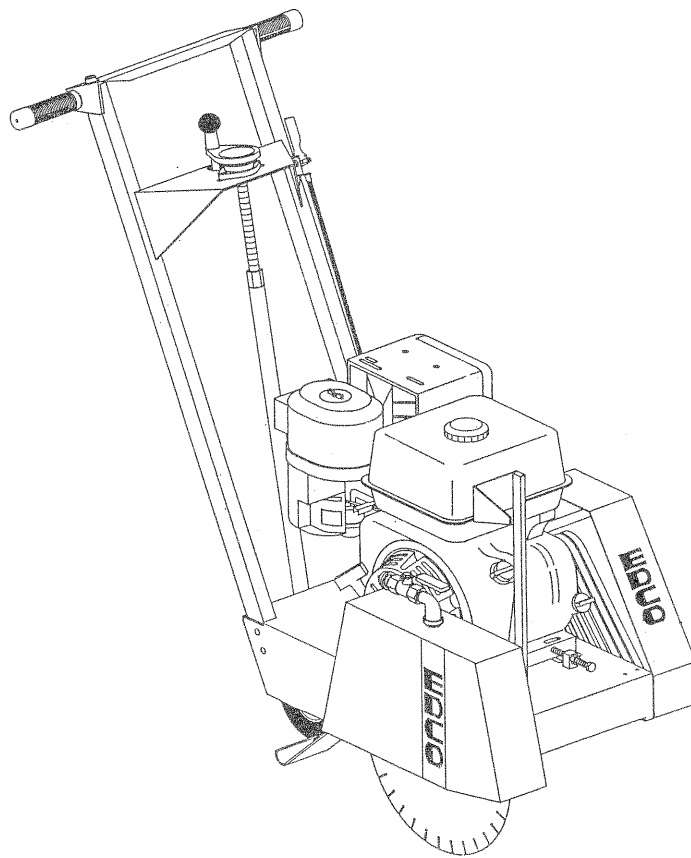


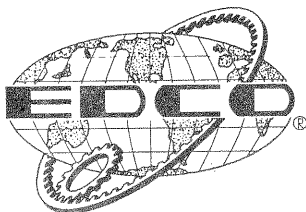
REVISED SEPTEMBER 1994
STARTING SERIAL NO. 1819

CONCRETE / ASPHALT SAW

PARTS LIST MANUAL



MODEL SK-14 "DOWN-CUT"



EQUIPMENT DEVELOPMENT COMPANY, INC.

100 THOMAS JOHNSON DRIVE, FREDERICK, MARYLAND 21702-4600 USA

PHONE (301)663-1600

TOLL FREE 1-800-638-3326

FAX (301)663-1607

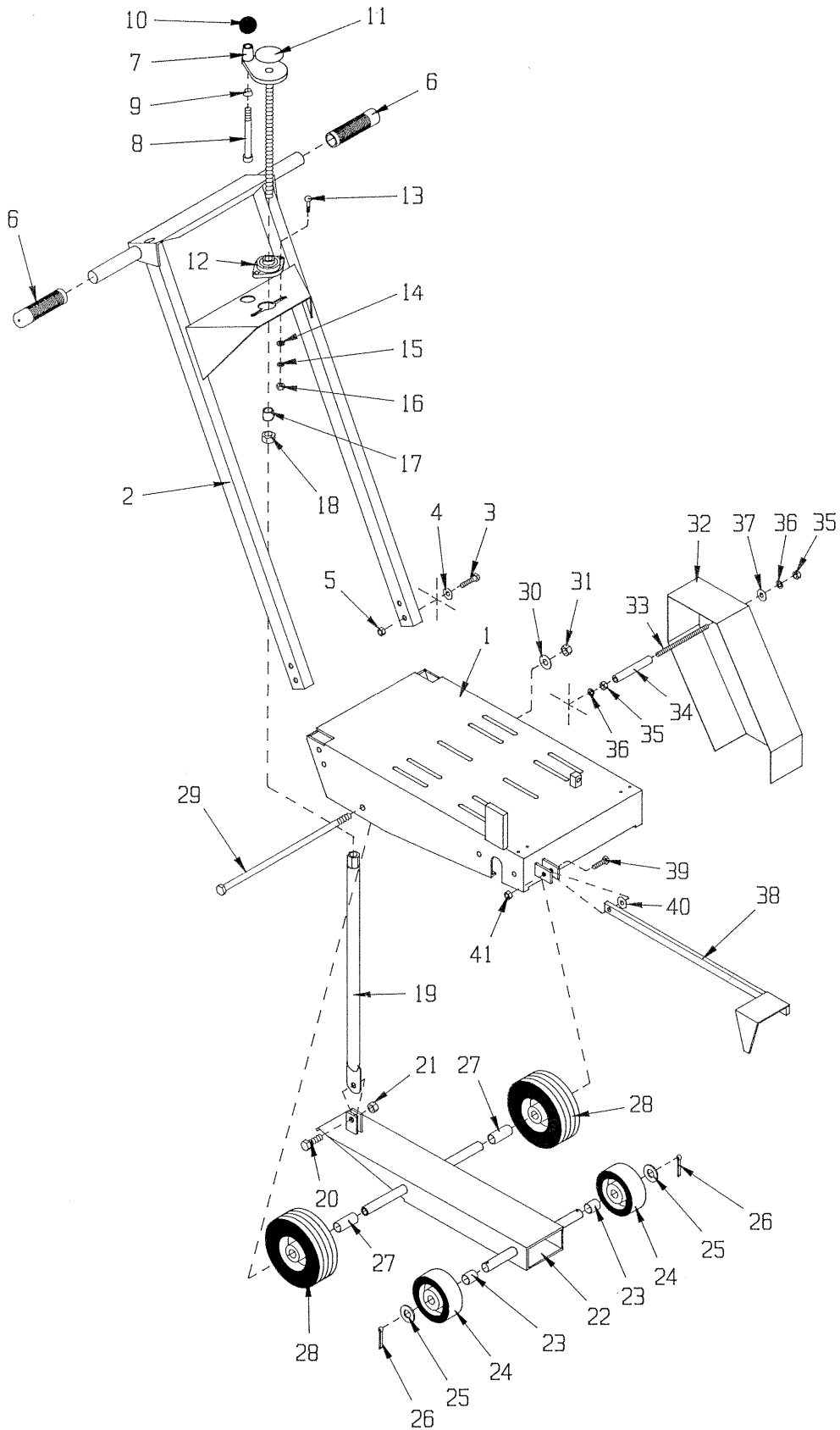
FAX FREE 1-800-447-3326

WEBSITE: WWW.EDCOINC.COM

EMAIL: SALES@EDCOINC.COM

PRINTED IN U.S.A.

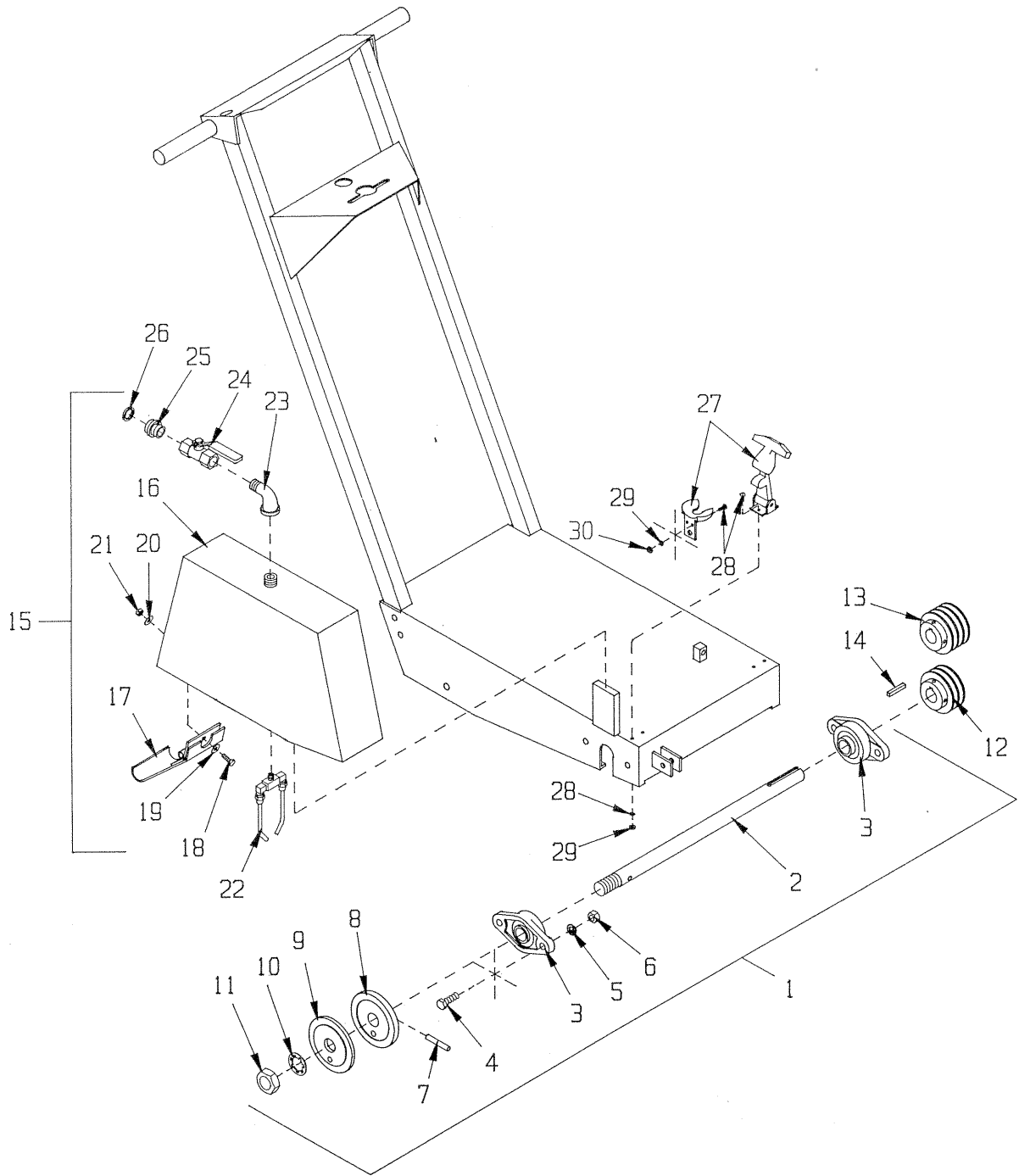
ILLUSTRATION 1: FRAME GROUPING



PARTS LISTING - ILLUSTRATION 1: MAIN FRAME GROUPING

Item #	Part #	Description	Qty.
1	52018	Main Frame (Down-Cut)	1
2	52021	Handle Bar	1
3	10816	Screw, Cap 3/8-24 x 1-1/2	4
4	10025	Washer, Flat 3/8	4
5	10004	Nut, Lock 3/8-24	4
6	79022	Grip, Hand 1" Model RG	2
7	80008	Handwheel, Small w/ 5/8-11 x 12" Rod	1
8	10411	Screw, Skt. Hd. Cap 1/2-13 x 4	1
9	50550	Sleeve For 1/2" Capscrew, Tapered	1
10	14023	Knob, Ball 1-3/8" Dia. w/ 1/2-13 Thd.	1
11	80007	Decal, "Cut-Control" (Small)	1
12	80009	Bearing, Ball 5/8" 2-Hole Flange	2
13	10412	Bolt, Carriage 1/4-20 x 1	2
14	10602	Washer, Flat 1/4	2
15	10038	Washer, Lock 1/4	2
16	10013	Nut 1/4-20	2
17	55010	Spacer, Handwheel 5/8" I.D. x 3/4	1
18	10046	Nut 5/8-11	1
19	52016	Linkage, Cut-Control	1
20	10308	Screw, Cap 1/2-20 x 1-1/2	1
21	10205	Nut, Lock 1/2-20	1
22	52004	Fork	1
23	52010	Spacer, Front Wheel 3/4 I.D. x 15/16	2
24	52001	Wheel, Alum. 4 x 1-1/2 x 3/4" Brg.	2
25	10009	Washer, Flat 3/4	2
26	10306	Pin, Cotter 3/16 x 1-1/2	2
27	52011	Spacer, Rear Wheel 3/4 I.D. x 1-7/8	2
28	80028	Wheel 6 x 2 x 3/4" Brg.	2
29	52014	Screw, Cap 1/2-13 x 14	1
30	10312	Washer, Flat 1/2	1
31	10407	Nut, Lock 1/2-13	1
32	52006	Cover, Belt (Down-Cut)	1
33	52013	Stud, Belt Cover 3/8-16 x 5-1/2	3
34	52012	Spacer, Belt Cover 3/8 I.D. x 3-13/16	3
35	10404	Nut 3/8-16	6
36	10811	Washer, Lock 3/8	6
37	10025	Washer, Flat 3/8	3
38	52007	Guide Bar (Down-Cut)	1
39	10309	Screw, Cap 3/8-24 x 1-1/4	1
40	10025	Washer, Flat 3/8	1
41	10004	Nut, Lock 3/8-24	1

ILLUSTRATION 2: ARBOR & BLADE GUARD GROUPING



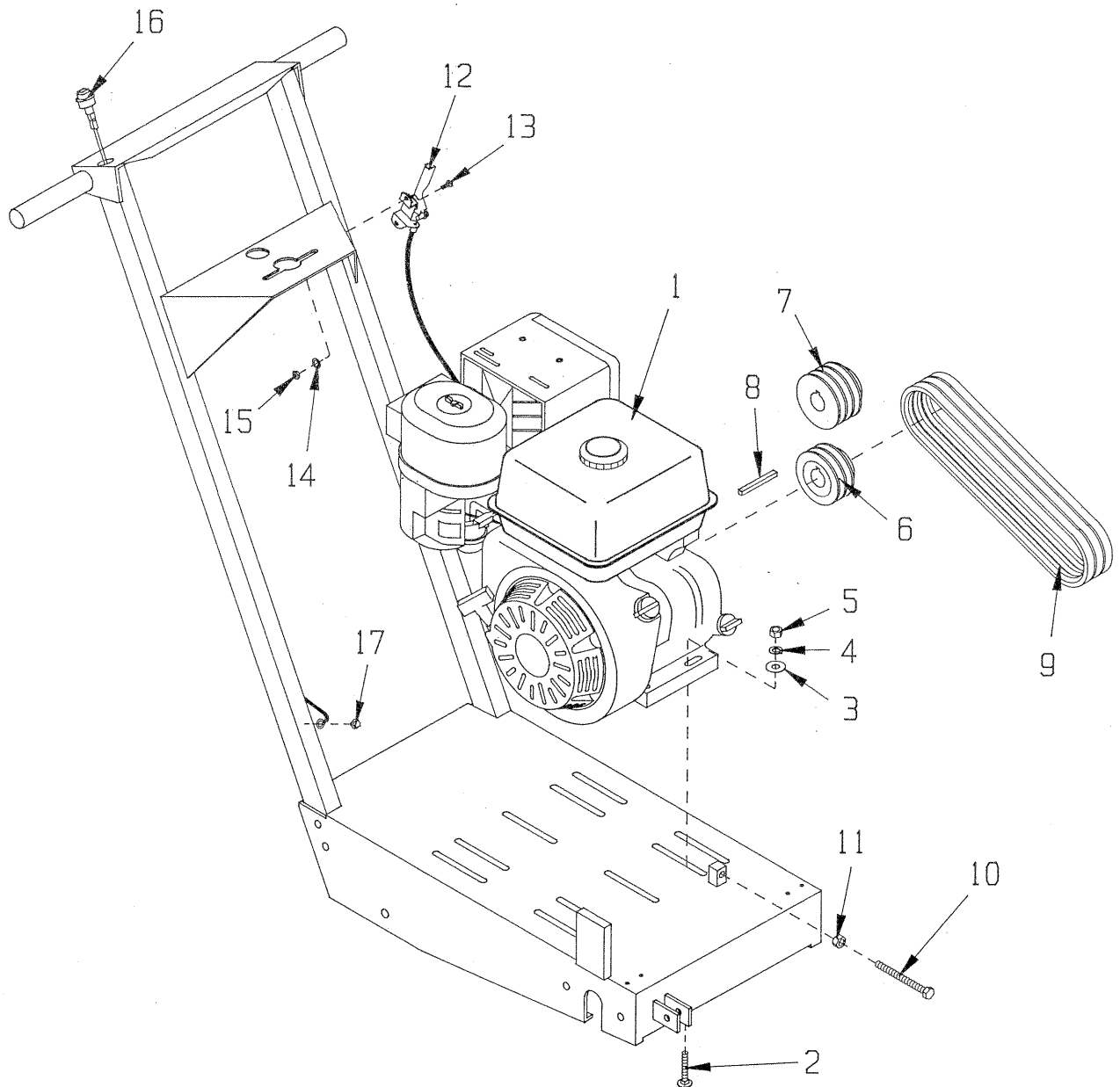
PARTS LISTING - ILLUSTRATION 2: ARBOR & BLADE GUARD GROUPING

Item #	Part #	Description	Qty.
1	69050A	Arbor Assembly Complete Includes Items 2 thru 11	
2	69050	Arbor Shaft 1"Dia. x 18-1/2"L.	1
3	62022	Bearing, Ball 1" 2-Hole Flange	2
4	10003	Screw, Cap 7/16-20 x 1-1/4	4
5	10450	Washer, Lock 7/16	4
6	10481	Nut 7/16-20	4
7	10211	Pin, Roll 5/16 x 2	1
* 8	56026	Arbor Backing Plate 4"Dia.	1
* 9	56025	Arbor-Blade Retaining Cap 4"Dia.	1
10	55009	Washer, Lock, Int. Tooth 1"	1
11	50019	Nut, Jam 1-14	1
*12	10109	Sheave, 3"O.D. x 2Gr.A x 1"Bore	1
*13	80027	Sheave, 3"O.D. x 3Gr.A x 1"Bore	1
14	10301	Key 1/4 Sq. x 1-1/2	1
15	52005A	Blade Guard Assembly Complete (Down-Cut) (Includes Items 16 thru 26)	
16	52005	Guard, Blade 14" (Down-Cut)	1
17	52020	Guard, Steel Flap	1
18	10018	Screw, Cap 1/4-20 x 3/4	1
19	10602	Washer, Flat 1/4	1
20	10038	Washer, Lock 1/4	1
21	10013	Nut 1/4-20	1
22	81004	Nozzle, Coolant	1
23	10724	Elbow, Street 1/2 NPT x 90 (Black)	1
24	10711	Valve, Ball 1/2 FPT	1
25	80021	Conn., Swivel Female 3/4 Hose x 1/2 MPT	1
26	10070	Washer, Hose 3/4	1
27	52002	Latch, Flexible Draw w/ T-Handle	1
28	10830	Screw, Machine 10-32 x 1/2	4
29	10831	Washer, Lock, Int. Tooth #10	4
30	10832	Nut 10-32	4

* Notes:

- Honda 11 HP engines use a 3-belt, A-style groove sheave (Item 13). All other units require a 2-belt, A-style groove sheave (Item 12).
- Starting Aug. 1993 (Serial No. 1374) Arbor Blade Retaining Cap (Item 9) and Backing Plate (Item 8) were changed from 3-1/2"Dia. to 4"Dia.

ILLUSTRATION 3: ENGINE GROUPING



PARTS LISTING - ILLUSTRATION 3: ENGINE GROUPING

Item #	Part #	Description	Qty.
1		Engine	1
	76025	Honda 8 HP GX240 (Shown)	
	15015	Kohler 8 HP Magnum M8T	
	4853	Briggs & Stratton 8 HP	
	79045	Honda 11 HP GX340	
2	10918	Bolt, Carriage 5/16-18 x 1-3/4	4
3	10213	Washer, Flat 5/16	4
4	10801	Washer, Lock 5/16	4
5	10054	Nut, 5/16-18	4
*6	10109	Sheave 3"O.D. x 2Gr.A x 1"Bore	1
*7	80027	Sheave 3"O.D. x 3Gr.A x 1"Bore	1
8	10301	Key 1/4 Sq. x 1-1/2	1
9	10253	Belt, AP-27 (8 HP)	2
	10253	Belt, AP-27 (11 HP)	3
10	52015	Bolt, Tap 3/8-16 x 3-1/2 (Full Thd.)	1
11	10404	Nut 3/8-16	1
12		Cable, Throttle, Lever-Type	
	40388	24" - Honda, Kohler	
	3611	54" - Briggs & Stratton (Trim to appropriate length)	
13	10830	Screw, Mach. 10-32 x 1/2	2
14	10831	Washer, Int. Tooth #10	2
15	10832	Nut 10-32	2
16	50010	Switch Kit, Stop Button	1
17	10877	Screw, Self-Tap Hex Washer 10-24 x 1/2	1

* Notes:

1. Honda 11 HP engines use 3-belt, A-style groove sheave. (Item 7). All other units require a 2-belt, A-style groove sheave (Item 6).

LIMITED EQUIPMENT WARRANTY

Equipment Development Company, Inc. herein referred to as EDCO warrants that each new unit manufactured by EDCO to be free from defects in material and workmanship in normal use and service for a period of (1) one year (except in the case of the cutter drum assembly on all model concrete asphalt planes, in which case the warranty period shall be 90 days) from date of shipment to the original retail or equipment rental center owner.

EDCO will, at its option, repair or replace, at the EDCO factory or at a point designated by EDCO any part, which shall appear to the satisfaction of EDCO inspection to have been defective in material or workmanship.

This warranty, does not apply to failure occurring as a result of abuse, misuse, negligent repairs, corrosion, erosion, normal wear and tear, alterations or modifications made to the product without express written consent of EDCO: or failure to follow the recommended operating practices and maintenance procedures as provided in the products operating and maintenance manuals.

This warranty does not obligate EDCO to bear any transportation charges in connection with the replacement or repair of defective parts. This warranty does not obligate EDCO to bear any expense for travel time or of personnel in correction with any service calls.

Accessories or equipment furnished and installed on the product by EDCO but manufactured by others, including but not limited to engines, motors, electrical equipment, transmissions, etc., shall carry the accessory manufacturers' own warranty.

THIS WARRANTY IS IN LIEU OF ALL OTHER WARRANTIES, EXPRESSED OR IMPLIED, OR STATUTORY, INCLUDING ANY WARRANTIES OF MERCHANTABILITY OR OF FITNESS FOR A PARTICULAR PURPOSE.

LIABILITY LIMITATIONS

The remedies of the user set forth under provisions of warranty outlines above are the exclusive and total liability of EDCO with the respect to their sale or the equipment and service furnished hereunder, in connection with the performance or breach thereof, or from the sale, delivery, installation, repair or technical direction covered by or furnished under the sale, whether based on contract, warranty, negligence, indemnity, strict liability, or otherwise shall not exceed the purchase price of the unit of equipment upon which such liability is based.

EDCO will not in any event be liable to the user, any successors in interest or any beneficiary or assignee relating to this sale for any consequential, incidental, indirect, special or punitive damages arising out of this sale or any breach thereof, or any defects on, or failure of, or malfunction of the equipment under this sale based upon loss of use, lost profits or revenue, interest, lost goodwill, work stoppage, impairment of other goods, loss by reason of shutdown or non-operation, increased expenses of operation of the equipment, cost of purchase or replacement power of claims of users or customers of the user for service interruption whether or not such loss or damage is based on contract, warranty, negligence, indemnity, strict liability, or otherwise.

EDCO reserves the right to modify, alter and improve any part or parts without incurring any obligation to replace any part or parts previously sold without such modified, altered or improved part or parts.

No person is authorized to give any other warranty or to assume any additional obligation on EDCO's behalf unless made in writing and signed by an officer of EDCO.

Equipment Development Company, Inc.

USE ONLY GENUINE EDCO PARTS AND ACCESSORIES

For your own safety, the safety of others and the life of your machine

PLEASE FILL IN INFORMATION AND SAVE

Date of Purchase _____

Name of Machine _____

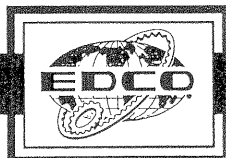
Model # _____

Serial # _____

Belt Size(s) _____

HOW TO ORDER REPAIR PARTS

- To insure product safety and reliability, always use genuine EDCO replacement parts when making repairs to the equipment.
- When ordering parts, please specify the MODEL and SERIAL NUMBER of the machine as given on the NAME PLATE. In addition, give part number, description and quantity as listed on the parts list.
- Please note: Due to improvements and changes in the equipment, the illustrations shown may be different than the actual machine.



EQUIPMENT DEVELOPMENT COMPANY, INC.

100 THOMAS JOHNSON DRIVE, FREDERICK, MD 21702-4600 USA

Phone (301) 663-1600 • 1-800-638-3326 Fax (301) 663-1607 • 1-800-447-3326 Website: www.edcoinc.com Email: sales@edcoinc.com ©1998

Printed in USA