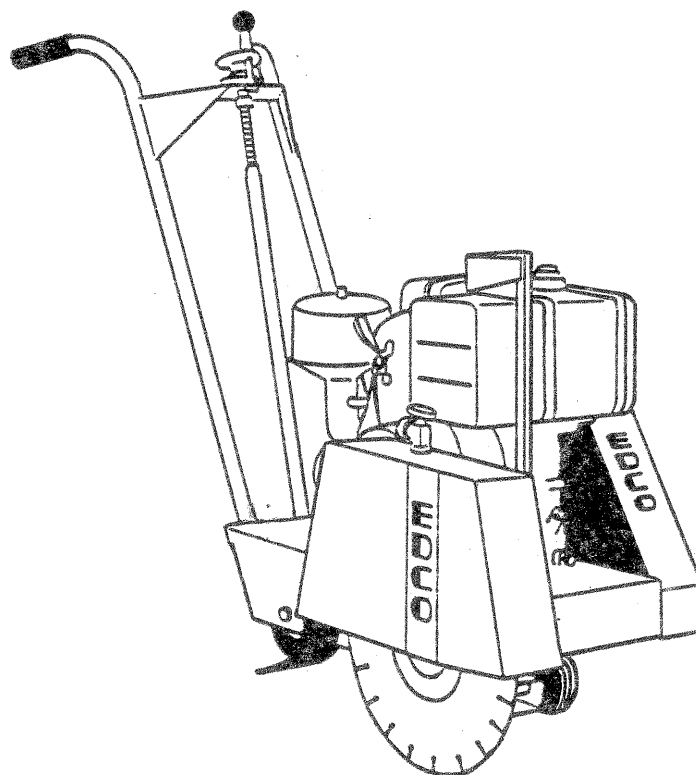


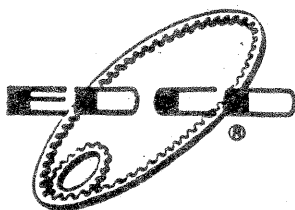
August 1, 1990

CONCRETE / ASPHALT SAW

PARTS MANUAL



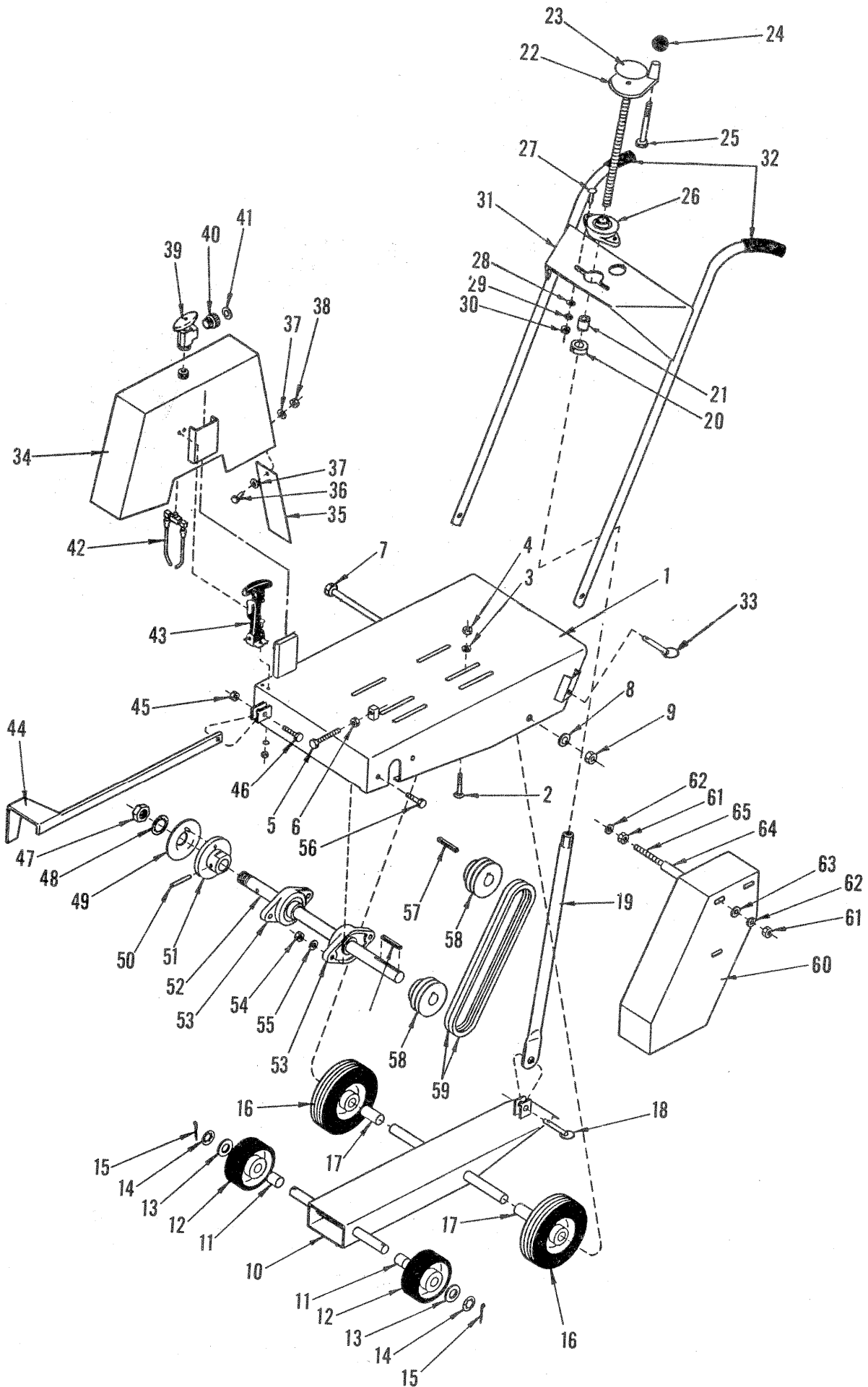
Model SK-14 "Down-Cut"



EQUIPMENT DEVELOPMENT COMPANY, INC.

100 THOMAS JOHNSON DRIVE, FREDERICK, MARYLAND 21702-4305 USA
301-663-1600 TOLL FREE 1-800-638-3326 FAX 301-663-1607

Printed in U.S.A.



| Item # | Part # | Qty. | Description | Item # | Part # | Qty. | Description |
|--------|--------|------|--------------------------------|----------|--------|------------------------------|-------------------------------|
| 1. | 52018 | 1 | Main Frame | 36. | 10018 | 1 | Screw, Cap 1/4-20 x 3/4 |
| 2. | 10817 | 4 | Bolt, Carr. 5/16-18 x 1-1/2 | 37. | 10602 | 2 | Washer, Flat 1/4 |
| 3. | 10801 | 4 | Washer, Lock 5/16 | 38. | 10015 | 1 | Nut, Lock 1/4-20 |
| 4. | 10054 | 4 | Nut 5/16-18 | 39. | 80003 | 1 | Valve, Angle Stop 1/2FIP |
| 5. | 52015 | 1 | Screw, Cap 3/8-16 x 3-1/2 Full | 40. | 80021 | 1 | Conn., Fem. 3/4Hose x 1/2MIP |
| 6. | 10404 | 1 | Nut 3/8-16 | 41. | 10070 | 1 | Washer, Hose |
| 7. | 52014 | 1 | Screw, Cap 1/2-13 x 14 | 42. | 81004 | 1 | Nozzle, Coolant (Male) |
| 8. | 10312 | 1 | Washer, Flat 1/2 | 43. | 52002 | 1 | Latch, Flex. Draw w/ T-Handle |
| 9. | 10407 | 1 | Nut, Lock 1/2-13 | | 10830 | 4 | Screw, Mach. 10-32 x 1/2 |
| 10. | 52004 | 1 | Fork (Under Carriage) | | 10831 | 4 | Washer, Int. Tooth #10 |
| 11. | 52010 | 2 | Spacer 3/4ID x 15/16 | | 10832 | 4 | Nut 10-32 |
| 12. | 52001 | 2 | Wheel, 4 x 1.5 x 3/4Brg. | 44. | 52007 | 1 | Guide Bar |
| 13. | 10009 | 2 | Washer, Flat 3/4 | 45. | 10004 | 1 | Nut, Lock 3/8-24 |
| 14. | 20050 | 2 | Clip, Retaining 3/4 | 46. | 10309 | 1 | Screw, Cap 3/8-24 x 1-1/4 |
| 15. | 10306 | 2 | Pin, Cotter 3/16 x 1-1/2 | 47. | 50019 | 1 | Nut, Jam 1-1/4 |
| 16. | 80028 | 2 | Wheel 6 x 2 x 3/4Brg. | 48. | 55009 | 1 | Washer, Int. Tooth 1" |
| 17. | 52011 | 2 | Spacer, Wheel 3/4ID x 1-7/8 | 49. | 56019 | 1 | Arbor, Blade Retaining Cap |
| 18. | 10125 | 1 | Pin, Detent Ring 1/2 x 1-1/2 | 50. | 10211 | 1 | Pin, Roll 5/16 x 2 |
| 19. | 52016 | 1 | Linkage, "Cut Control" | 51. | 56008 | 1 | Arbor, Backing Plate |
| 20. | 10046 | 1 | Nut 5/8-11 | 52. | 69050 | 1 | Arbor Shaft 1"RD x 18-1/2 |
| 21. | 55010 | 1 | Spacer, Handwheel 5/8ID x 3/4 | 53. | 62022 | 2 | Bearing, Ball 1" 2-Hole |
| 22. | 80008 | 1 | Handwheel w/ 5/8-11 x 12 | 54. | 10004 | 4 | Nut, Lock 3/8-24 |
| 23. | 80007 | 1 | Decal, "Cut Control" | 55. | 10025 | 4 | Washer, Flat 3/8 |
| 24. | 14023 | 1 | Knob, Ball 1/2-13 x 1-3/8 Rd. | 56. | 10309 | 4 | Screw, Cap 3/8-24 x 1-1/4 |
| 25. | 81001 | 1 | Screw, Cap 1/2-13 x 4 | 57. | 10301 | 2 | Key 1/4 Sq. x 1-1/2 |
| 26. | 80009 | 1 | Bearing, Ball 5/8 2-Hole | 58. | 10109 | 2 | Sheave 3"OD x 2Gr.A x 1"Bore |
| 27. | 10412 | 2 | Bolt, Carr. 1/4-20 x 1 | or 80027 | 2 | Sheave 3"OD x 3Gr.A x 1"Bore | |
| 28. | 10602 | 2 | Washer, Flat 1/4 | 59. | 10253 | 2 or 3 | Belt AP-27 |
| 29. | 10038 | 2 | Washer, Lock 1/4 | 60. | 52006 | 1 | Cover, Belt |
| 30. | 10013 | 2 | Nut 1/4-20 | 61. | 10404 | 6 | Nut 3/8-16 |
| 31. | 52019 | 1 | Handle Bar | 62. | 10811 | 6 | Washer, Lock 3/7 |
| 32. | 79022 | 2 | Grip, Hand 1" Hunt | 63. | 10025 | 3 | Washer, Flat 3/8 |
| 33. | 10125 | 2 | Pin, Detent Ring 1/2 x 1-1/2 | 64. | 52012 | 3 | Spacer, 3/8ID x 3-13/16 |
| 34. | 52005 | 1 | Guard, Blade 14" | 65. | 52013 | 3 | Stud, 3/8-16 x 5-1/2 |
| 35. | 52017 | 1 | Flap, Splash | | | | |

POWER OPTIONS (NOT SHOWN)

| | | | |
|-------|-----------------------|-------|-----------------------|
| 15015 | Engine, Kohler 8 H.P. | 15013 | Engine, B & S 10 H.P. |
| 4853 | Engine, B & S 8 H.P. | 79045 | Engine, Honda 11 H.P. |
| 76025 | Engine, Honda 8 H.P. | | |

IMPORTANT!!!

When ordering parts, please specify the MODEL and SERIAL number of the machine as given on the name plate and give part number, quantity, and description as listed on the parts list.

PRODUCT IMPROVEMENT LIABILITY DISCLAIMER

The EQUIPMENT DEVELOPMENT COMPANY INC. reserves the right to make any changes in or improvements on its products without incurring any liability or obligation whatever and without being required to make any corresponding changes or improvements in products previously manufactured or sold.