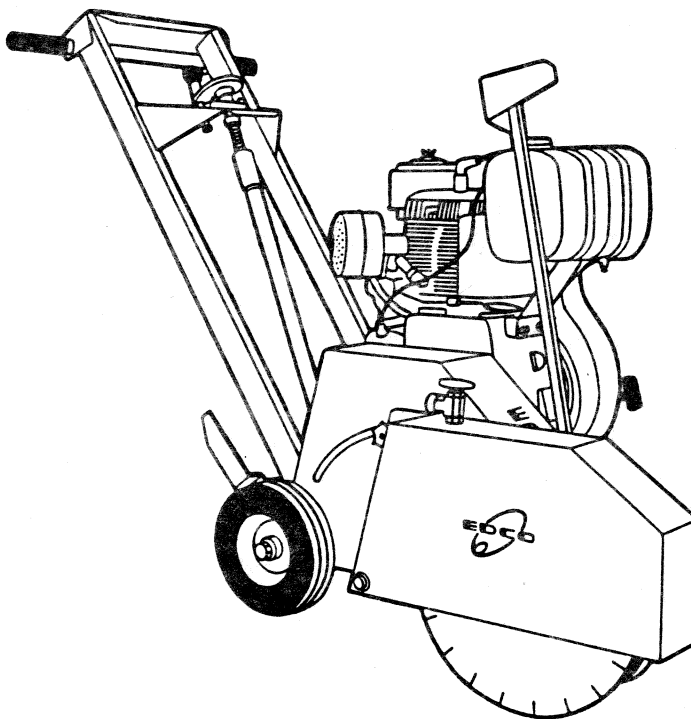


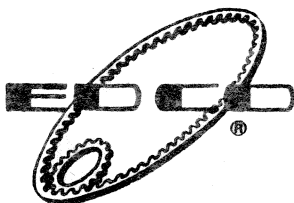


# CONCRETE/ASPHALT SAW

## INSTRUCTIONS AND PARTS MANUAL



Model SB-14

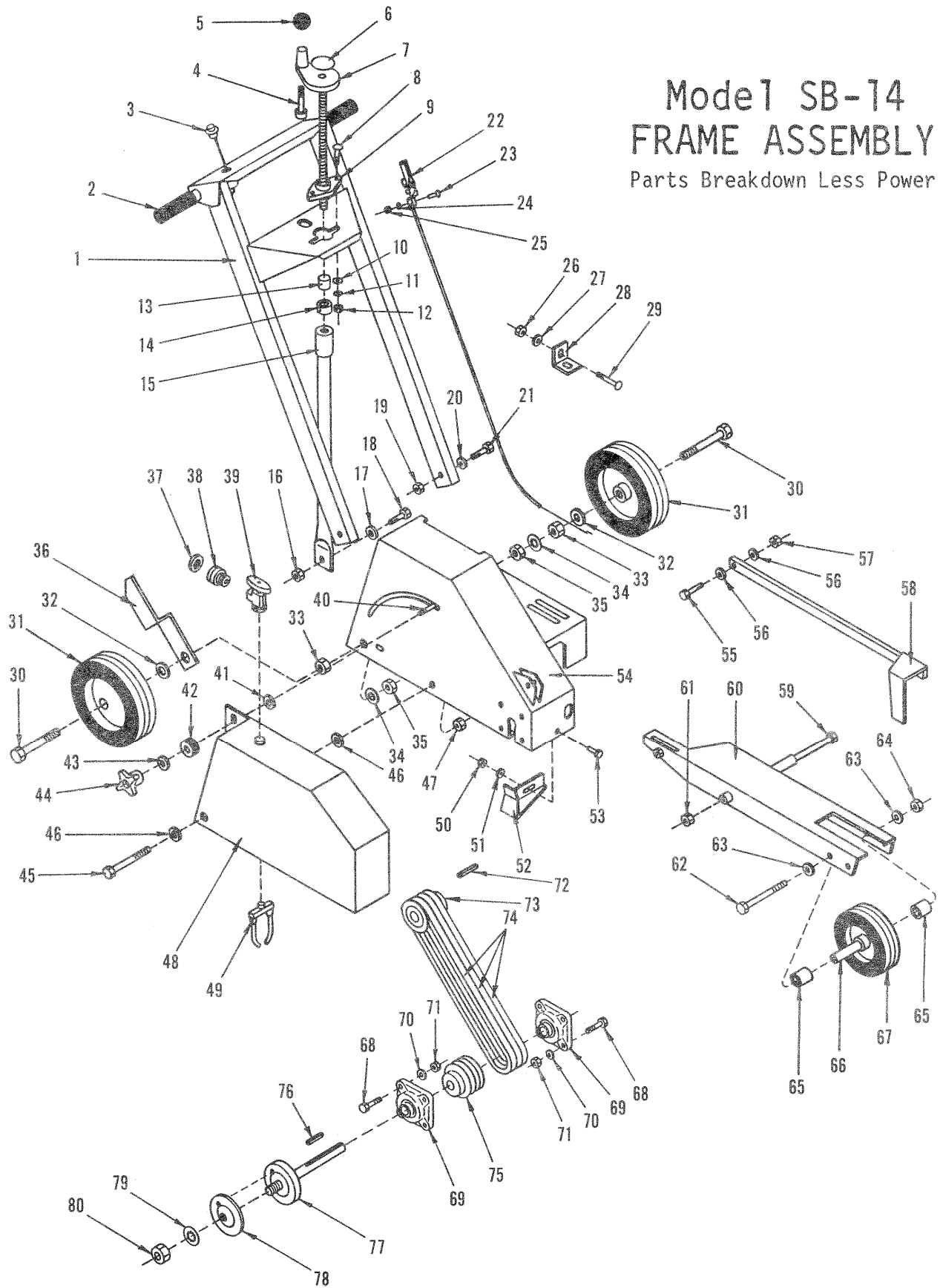


**EQUIPMENT DEVELOPMENT COMPANY, INC.**

100 THOMAS JOHNSON DRIVE, FREDERICK, MARYLAND 21702 USA  
301-663-1600 TOLL FREE 1-800-638-3326 FAX 301-663-1607

# Model SB-14 FRAME ASSEMBLY

Parts Breakdown Less Power



FRAME ASSEMBLY LESS POWER OPTION

Item #	Part #	Qty.	Description	Item #	Part #	Qty.	Description
1.	81024	1	Handle Bar	42.	10034	1	Rubber Bushing 3/8
2.	61108	2	Hand Grip	43.	10025	1	Flatwasher 3/8
3.	50010	1	Stop Button Switch(Gas Unit)	44.	80011	1	Star Knob 3/8-16
4.	81001	1	Capscrew 1/2-13 x 4	45.	10913	1	Capscrew 1/2-20 x 5
5.	14023	1	Ball Knob	46.	10312	2	Flatwasher 1/2
6.	80007	1	Decal, "Cut Control"	47.	10205	1	Locknut 1/2-20
7.	81023	1	Handwheel W/ 5/8-8 x 12	48.	80004	1	Blade Guard
8.	10412	2	Carr. Bolt 1/4-20 x 1	49.	81004	1	Nozzle, Coolant
9.	80009	1	Bearing 5/8	50.	10015	1	Locknut 1/4-20
10.	10602	2	Flatwasher 1/4	51.	10602	1	Flatwasher 1/4
11.	10038	2	Lockwasher 1/4	52.	80037	1	Retainer, Blade Guard
12.	10013	2	Nut 1/4-20	53.	10018	1	Capscrew 1/4-20 x 3/4
13.	55010	1	Spacer 5/8ID x 3/4	54.	80002	1	Main Frame
14.	10096	1	Locking Collar 5/8	55.	10309	1	Capscrew 3/8-24 x 1 1/4
15.	81025	1	Linkage, Cut Control	56.	10025	2	Flatwasher 3/8
16.	10205	1	Locknut 1/2-20	57.	10004	1	Locknut 3/8-24
17.	10312	1	Flatwasher 1/2	58.	81009	1	Guide Bar
18.	10308	1	Capscrew 1/2-20 x 1 1/2	59.	10408	1	Capscrew 1/2-13 x 9
19.	10004	2	Locknut 3/8-24	60.	80018	1	Fork Assembly
20.	10025	2	Flatwasher 3/8	61.	10407	1	Locknut 1/2-13
21.	10029	2	Capscrew 3/8-24 x 1 3/4	62.	10913	1	Capscrew 1/2-20 x 5
22.	3611	1	Throttle Cable (Gas Unit)	63.	10312	2	Flatwasher 1/2
23.	10830	2	Mach. Screw 10-32 x 1/2	64.	10205	1	Lockwasher 1/2-20
24.	10831	2	Int. Tooth Washer #10	65.	80022	2	Spacer, Axle 3/4ID x 13/16
25.	10832	2	Nut 10-32	66.	80023	1	Axle Tube 3/4OD x 3 7/8
26.	10404	1	Nut 3/8-16	67.	80028	1	Wheel 6 x 2 x 3/4Brg.
27.	10025	1	Flatwasher 3/8	68.	10021	8	Capscrew 3/8-24 x 1
28.	81002	1	Tensioner Bracket	69.	77009	2	Bearing 3/4
29.	10908	1	Carr. Bolt 3/8-16 x 2 1/2	70.	10811	8	Lockwasher 3/8
	10909	1	Carr. Bolt 3/8-16 x 3	71.	10014	8	Nut 3/8-24
30.	10406	2	Capscrew 3/4-16 x 4	72.	10017	1	Key 1/4Sq. x 2 3/8
31.	79013	2	Wheel 8 x 2 1/2 x 3/4Brg.	73.	80027	1	Sheave 3"OD x 3Gr.A x 1"Bore
32.	10009	2	Flatwasher 3/4		81006	1	Sheave 3"OD x 3Gr.A x 1 1/8Bore.
33.	10405	2	Nut 3/4-16	74.	81007	3	Belt AX-33 Note: See Serial
34.	10609	2	Int. tooth Washer 3/4		10233	3	Belt AX-34 Number Plate
35.	10429	2	Jam Nut 3/4-16	75.	81011	1	Sheave 3"OD x 3Gr.A x 3/4Bore
36.	81003	1	Guide Fin, Rear	76.	10020	1	Key 3/16Sq. x 1 7/8
37.	10070	1	Hose Washer 3/4	77.	81008	1	Arbor Hub & Shaft
38.	80021	1	Hose Connector	78.	80005	1	Blade Retaining Cap
39.	80003	1	Valve, Coolant	79.	10609	1	Int. Tooth Washer 3/4
40.	10087	1	Carr. Bolt 3/8-16 x 1 3/4	80.	10403	1	Jam Nut 3/4-10
41.	10312	1	Flatwasher 1/2				

\*\*\*\*\*

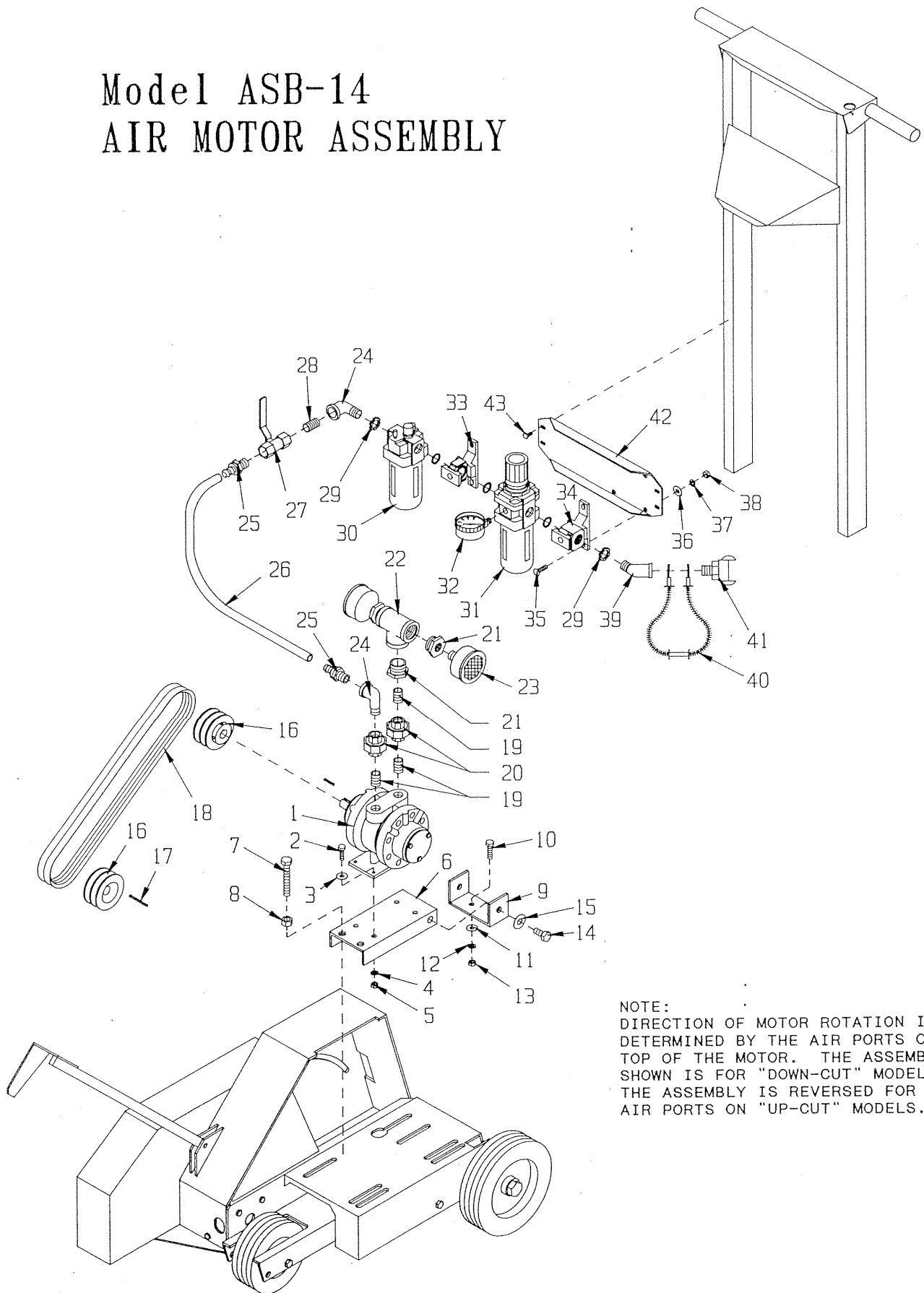
PLEASE NOTE:

EDCO RESERVES THE RIGHT TO MAKE IMPROVEMENTS OR CHANGES ON THE EQUIPMENT SHOWN. THE DIAGRAMS SHOWN MAY BE DIFFERENT THAN THE ACTUAL MACHINE.

IMPORTANT!!!

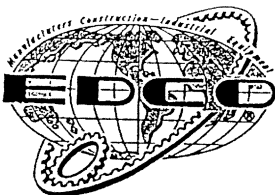
WHEN ORDERING PARTS, PLEASE SPECIFY THE MODEL AND SERIAL NUMBER OF THE MACHINE AS GIVEN ON THE NAME PLATE AND GIVE PART NUMBER, QUANTITY, AND DESCRIPTION AS LISTED ON THE PARTS LIST.

# Model ASB-14 AIR MOTOR ASSEMBLY



NOTE:  
DIRECTION OF MOTOR ROTATION IS  
DETERMINED BY THE AIR PORTS ON  
TOP OF THE MOTOR. THE ASSEMBLY  
SHOWN IS FOR "DOWN-CUT" MODELS.  
THE ASSEMBLY IS REVERSED FOR THE  
AIR PORTS ON "UP-CUT" MODELS.

PARTS LISTING FOR MODEL ASB-14 AIR MOTOR ASSEMBLY			
Item #	Part #	Description	Qty.
1	80050	Motor, Air, 5 HP	1
2	10606	Screw, Cap 5/16-18 x 1-1/4	4
3	10213	Washer, Flat 5/16	4
4	10801	Washer, Lock 5/16	4
5	10054	Nut 5/16-18	4
6	80065	Mount, Air Motor	1
7	10340	Bolt, Tap 1/2-13 x 3 (Full Thread)	2
8	10417	Nut 1/2-13	2
9	80066	Bracket, Motor Mount	1
10	10309	Screw, Cap 3/8-24 x 1-1/4	2
11	10025	Washer, Flat 3/8	2
12	10811	Washer, Lock 3/8	2
13	10014	Nut 3/8-24	2
14	10914	Screw, Cap 1/2-13 x 1	2
15	10312	Washer, Flat 1/2	2
16	80016	Sheave 3"OD x 2Gr.B x 3/4"Bore	2
17	10020	Key 3/16" Sq. x 1-7/8	1
18	10251	Belt BP-34	2
19	80059	Pipe Nipple, Close 1/2 NPT (Galv.)	3
20	80060	Pipe Union 1/2 NPT (Galv.)	2
21	80057	Bushing, Hex 1 x 1/2 NPT (Galv.)	3
22	80056	Pipe Tee, Female 1"NPT (Galv.)	1
23	80055	Muffler, 1/2 NPT	2
24	10724	Elbow, Street 1/2 NPT x 90°(Black)	2
25	80061	Barb, Push-On 1/2 Hose x 1/2 MPT	2
26	80063	Hose, Push-On 1/2"ID x 17"LG	1
27	10711	Valve, Ball 1/2 FPT	1
28	10796	Pipe Nipple 1/2NPT x 1-1/2"(Black)	1
29	10790	Conduit Lock Nut 1/2 NP	2
30	80071	Lubricator, 1/2 NPT NAL4000-N04	1
31	80070	Filter/Regulator 1/2 NPT NAW4000-N04	1
32	C90207	Gauge, Air Pressure, Side Stem	1
33	80072	Bracket, T-Type, Y40T	1
34	80073	Bracket, T-Type Adaptor, NE40T-N04	1
35	10819	Bolt, Carriage 5/18-18 x 1	4
36	10213	Washer, Flat 5/16	4
37	10801	Washer, Lock 5/16	4
38	10054	Nut 5/16-18	4
39	10734	Elbow, Street 1/2 NPT x 45° (Black)	1
40	63040	Cable, "Whipchek" Safety 1/8 x20-1/4	1
41	80075	Coupler, Air Hose, 1/2 MPT	1
42	80074	Bracket, F.R.L. Mounting	1
43	10846	Screw, S.T. Hex Washer 1/4-20 x 1/2	4

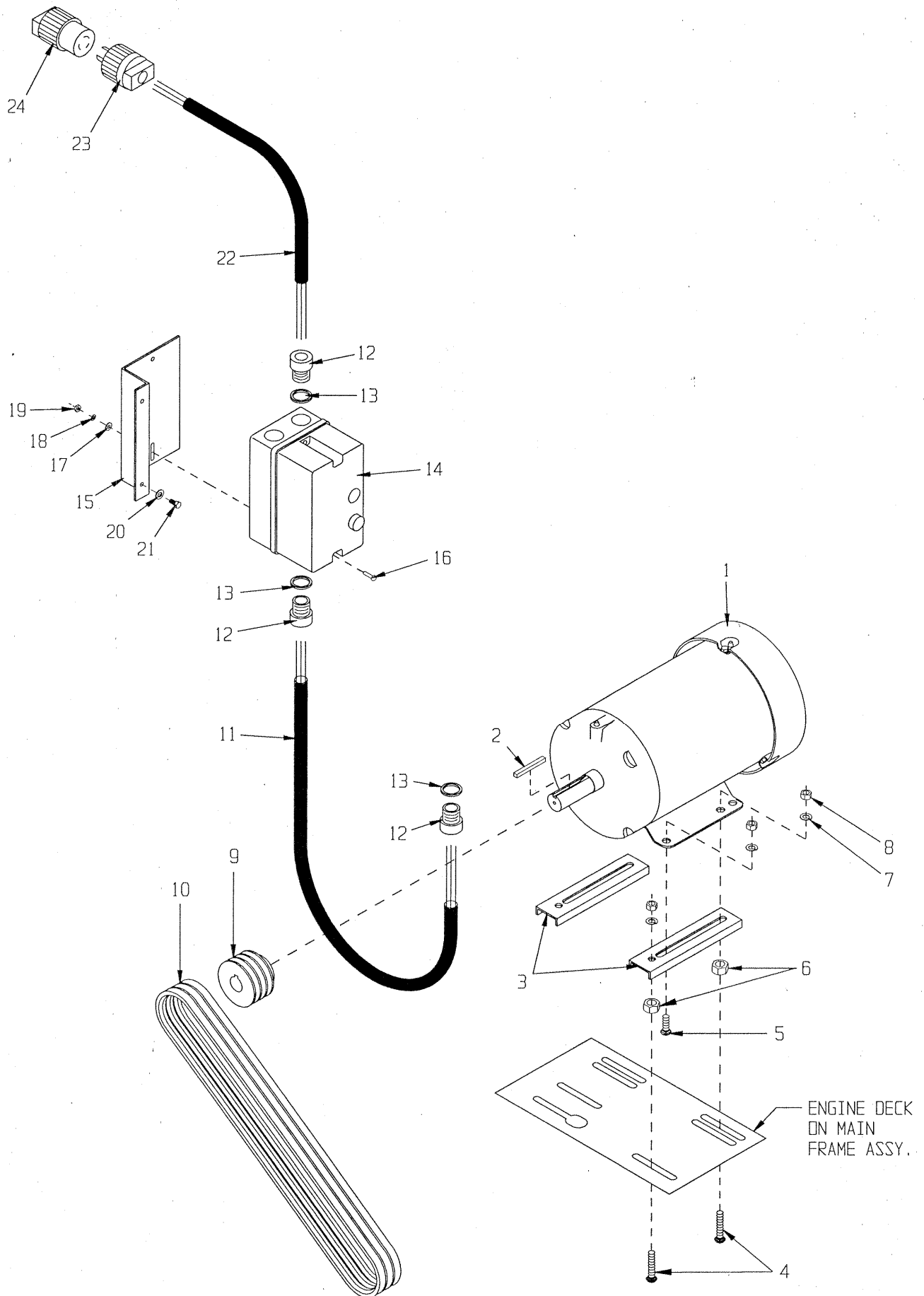


## EQUIPMENT DEVELOPMENT COMPANY, INC.

100 THOMAS JOHNSON DRIVE, FREDERICK, MARYLAND 21702 USA  
 PHONE (301)663-1600 TOLL FREE 1-800-638-3326  
 FAX (301)663-1607 FAX FREE 1-800-447-3326

# SB-14 MOTOR ASSEMBLY FOR 5 H.P. BALDOR

JULY '97



## PARTS LISTING: MODEL SB-14 MOTOR ASSEMBLY FOR 5 H.P. BALDOR

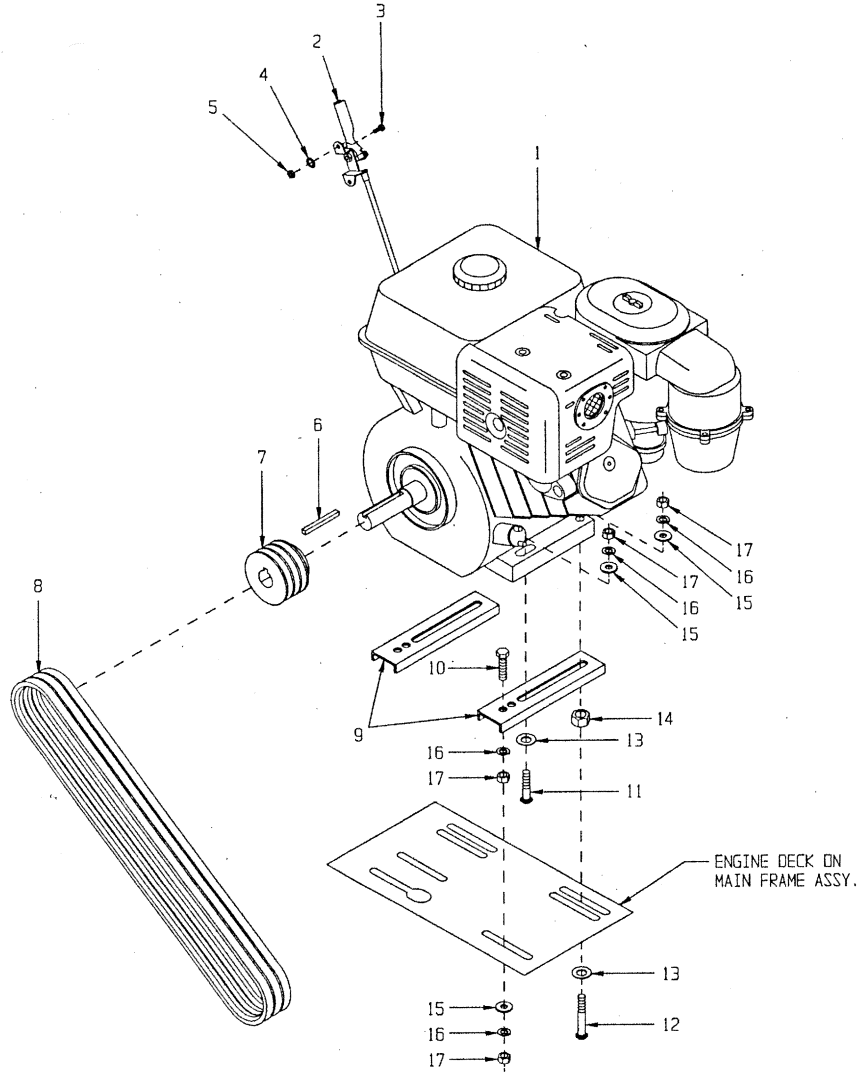
Item #	Part #	Description	Qty.
1		Motor	1
	81026	Baldor 5 HP-1 PH, 60 Hz, 3450 RPM	
	81022	Baldor 5 HP-3 PH, 60 Hz, 3450 RPM	
	16020	Baldor 5 HP-3 PH, 50 Hz, 2850 RPM	
2	-----	Key 1/4" Sq. (Included w/ Motor)	1
3	81010	Mount Brkt., Channel	2
4	10804	Bolt, Carriage 3/8-16 x 1-1/2	4
5	10802	Bolt, Carriage 3/8-16 x 1	2
6	10417	Nut 1/2-13 (Spacer)	2
7	10811	Washer, Lock 3/8	6
8	10404	Nut 3/8-16	6
9	81006	Sheave 3"OD x 3Gr.A x 1-1/8" Bore	1
10	81007	Belt AX-33	3
*11		Wire Harness (See Note)	1
	86024	10/3 x 36"LOA	
	86023	12/4 x 36"LOA	
12	10605	Connector, Strain Relief 3/4 NPT x .650-.750" Range	3
13	10740	Conduit Lock Nut 3/4 NP	3
14	85045	Starter CA3-30 w/ Large Enclosure (Specify HP, Phase, Volts, Amps, Hz)	1
15	86027	Mounting Brkt., Large CA3-30 Starter	1
16	10362	Screw, Machine 8-32 x 3/4	2
17	10850	Washer, Flat #10	2
18	10461	Washer, Lock, Int. Tooth #8	2
19	10462	Nut 8-32	2
20	10038	Washer, Lock 1/4	2
21	10846	Screw, S.T. Hex Washer 1/4-20 x 1/2	2
*22		Wire Harness (See Note)	1
	86026	10/3 x 24"LOA	
	86022	12/4 x 24"LOA	
*23	40037	Plug, Locking 20A/250V	1
*24	40000	Plug Connector, Locking 20A/250V	1

## \* Note:

Plug and Connector (Items 23 & 24)  
are not supplied on 3 Phase units.  
1-Phase unit use 10/3 Wire Harness  
3-Phase unit use 12/4 Wire Harness

# SB-14 ENGINE ASSEMBLY FOR 11 H.P. HONDA GX340

MARCH '95



PARTS LISTING FOR MODEL SB-14 11 HP HONDA GX340 ENGINE ASSEMBLY			
Item #	Part #	Description	Qty.
1	79045	Engine, Honda 11 HP GX340	1
2	3611	Cable, Throttle Lever-Type 54" (Note: Trim to appropriate length)	1
3	10830	Screw, Machine 10-32 x 1/2	2
4	10831	Washer, Lock, Internal Tooth #10	2
5	10832	Nut 10-32	2
6	10071	Key 1/4" Sq. x 2-1/2	1
7	80027	Sheave 3"OD x 3Gr.A x 1" Bore	1
8	81007	Belt AX-33	3
9	81010	Mount Brkt., Channel	2
10	10480	Bolt, Tap 3/8-16 x 1-1/2 (Full Thread)	2
11	10087	Bolt, Carriage 3/8-16 x 1-3/4	2
12	10908	Bolt, Carriage 3/8-16 x 2-1/2	2
13	10040	Washer, Garret 1"OD x 17/32"ID x .054"T	4
14	10417	Nut 1/2-13 (Spacer)	2
15	10025	Washer, Flat 3/8	6
16	10811	Washer, Lock 3/8	8
17	10404	Nut 3/8-16	8



**EQUIPMENT DEVELOPMENT COMPANY, INC.**

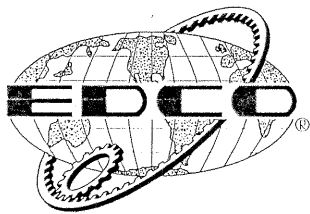
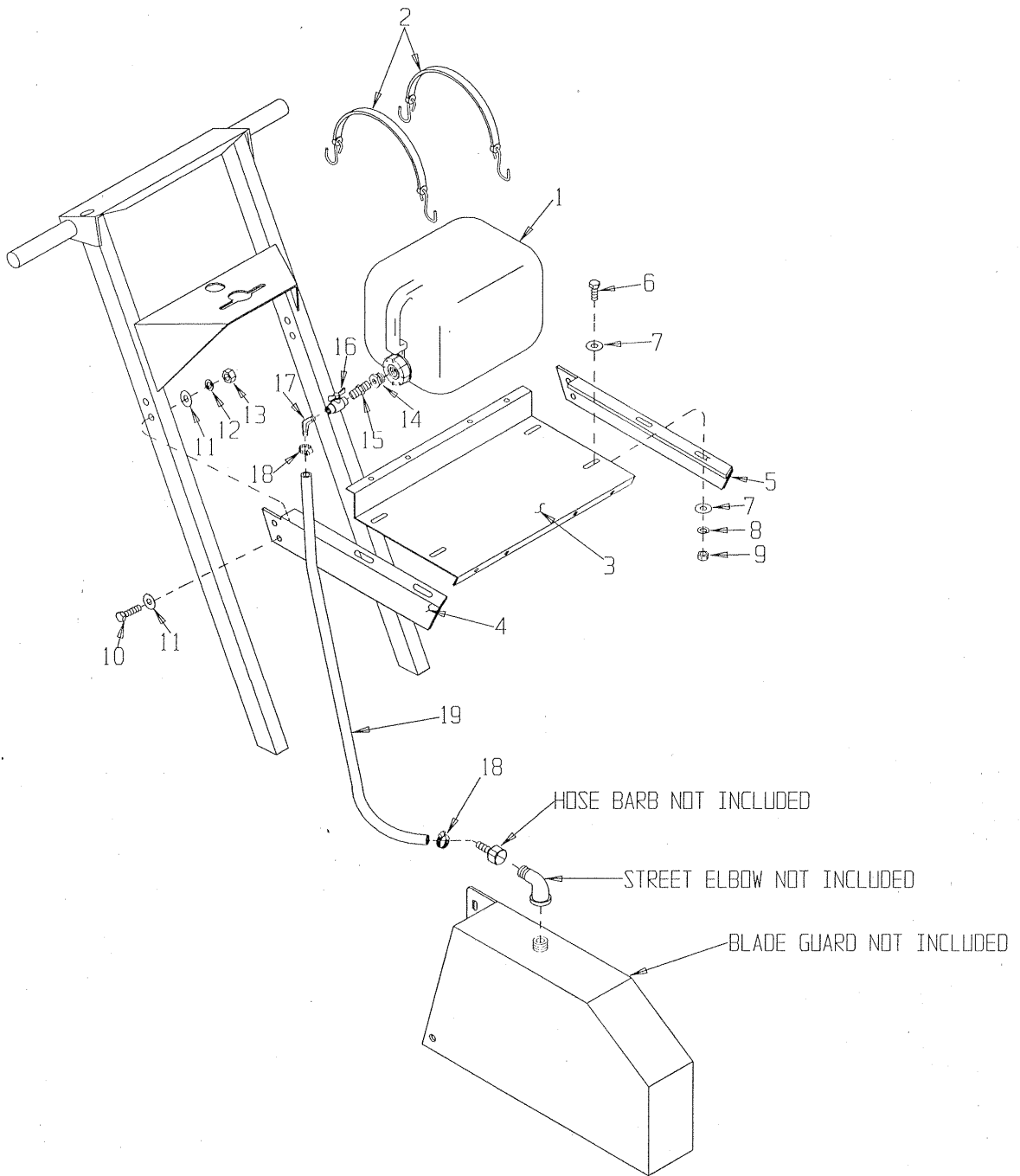
100 THOMAS JOHNSON DRIVE FREDERICK MARYLAND 21702 USA  
301-663-1600 TOLL FREE 1-800-638-3326 FAX 301-663-1607



**This page left blank intentionally**

MODEL SB-14  
 OPTIONAL  
 5 GALLON WATER TANK ASSEMBLY  
 PART NO. 51090

MARCH 1997



EQUIPMENT DEVELOPMENT COMPANY, INC.

100 THOMAS JOHNSON DRIVE, FREDERICK, MARYLAND 21702-4305 USA

PHONE (301)663-1600

TOLL FREE 1-800-638-3326

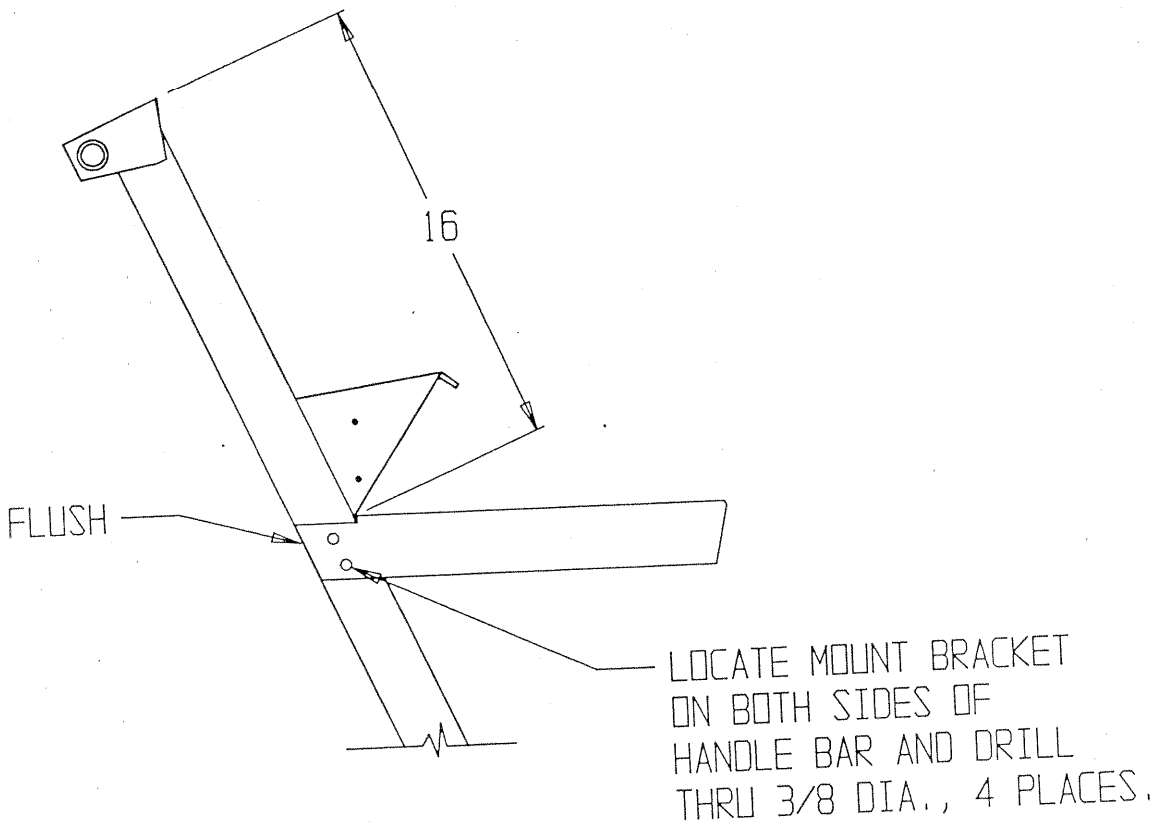
FAX (301)663-1607

FAX FREE 1-800-447-3326

PRINTED IN U.S.A.

MODEL SB-14 OPTIONAL WATER TANK ASSEMBLY PART NO. 51090

Item #	Part #	Description	Qty.
1	52031	Drum, Plastic 5 Gallon, 3/4 NPT Cap	1
2	52035	Tie-Down Strap, Molded Rubber 24"	2
3	52036	Tray, Water Tank	1
4	51091	Mount Bracket, Water Tank (Right)	1
5	51092	Mount Bracket, Water Tank (Left)	1
6	10053	Screw, Cap 5/16-18 x 3/4	4
7	10213	Washer, Flat 5/16	8
8	10801	Washer, Lock 5/16	4
9	10054	Nut 5/16-18	4
10	10068	Screw, Cap 3/8-16 x 1-1/2	4
11	10025	Washer, Flat 3/8	8
12	10811	Washer, Lock 3/8	4
13	10404	Nut 3/8-16	4
14	52034	Bushing, Hex 3/4 x 1/4 NPT (Brass)	1
15	-----	End Connector 1/4 NPT (Included w/ Valve Kit, Item #16)	1
16	52032	Valve, Labcock Kit 1/4 NPT	1
17	10799	Barb, Elbow 90° 3/8 Hose x 1/4 MPT	1
18	50069	Clamp, Hose Size M6, Adj. to 13/16"	2
19	52039	Hose, Water 3/8"ID x 48"L	1



## LIMITED EQUIPMENT WARRANTY

Equipment Development Company, Inc. herein referred to as EDCO warrants that each new unit manufactured by EDCO to be free from defects in material and workmanship in normal use and service for a period of (1) one year (except in the case of the cutter drum assembly on all model concrete asphalt planes, in which case the warranty period shall be 90 days) from date of shipment to the original retail or equipment rental center owner.

EDCO will, at its option, repair or replace, at the EDCO factory or at a point designated by EDCO any part, parts which shall appear to the satisfaction of EDCO inspection at such point, to have been defective in material or workmanship.

This warranty, does not apply to failure occurring as a result of abuse, misuse, negligent repairs, corrosion, erosion, normal wear and tear, alterations or modifications made to the product without express written consent of EDCO: or failure to follow the recommended operating practices and maintenance procedures as provided in the products operating and maintenance manuals.

This warranty does not obligate EDCO to bear any transportation charges in connection with the replacement or repair of defective parts. This warranty does not obligate EDCO to bear any expenses for travel time or of personnel in connection with any service calls.

Accessories or equipment furnished and installed on the product by EDCO but manufactured by others, including but not limited to engines, motors, electrical equipment, transmissions, etc., shall carry the accessory manufacturers' own warranty.

THIS WARRANTY IS IN LIEU OF ALL OTHER WARRANTIES, EXPRESSED OR IMPLIED, OR STATUTORY, INCLUDING ANY WARRANTIES OF MERCHANTABILITY OR OF FITNESS FOR A PARTICULAR PURPOSE.

### LIABILITY LIMITATIONS

The remedies of the user set forth under provisions of warranty outlined above are exclusive and the total liability of EDCO with respect to their sale or the equipment and service furnished hereunder, in connection with the performance or breach thereof, or from the sale, delivery, installation, repair or technical direction covered by or furnished under the sale. Whether based on contract, warranty, negligence, indemnity, strict liability, or otherwise shall not exceed the purchase price of the unit of equipment upon which such liability is based.

EDCO will not in any event be liable to the user, any successors in interest or any beneficiary or assignee relating to this sale/or any consequential, incidental, indirect, special or punitive damages arising out of this sale or any breach thereof, or any defects on, or failure of, or malfunction of the equipment under this sale whether based upon loss of use, lost profits or revenue, interest, lost goodwill, work stoppage, impairment of other goods, loss by reason of shutdown or non-operation, increased expenses of operation of the equipment, cost of purchase or replacement power or claims of users or customers of the user for service interruption whether or not such loss or damage is based on contract, warranty, negligence, indemnity, strict liability, or otherwise.

EDCO reserves the right to modify, alter and improve any part or parts without incurring any obligation to replace any part or parts previously sold without such modified, altered or improved part or parts.

No person is authorized to give any other warranty or to assume any additional obligation on EDCO's behalf unless made in writing and signed by an officer of EDCO.

Equipment Development Company, Inc.