

ELECTRIC POWERED 14" MASONRY SAW

PARTS LIST MANUAL



MS-14 PORTABLE MASONRY SAWS

ELECTRIC MOTOR POWER OPTIONS

PART NO.	MODEL	ELECTRIC MOTOR POWER OPTIONS
22300	MS14-1.5B	BALDOR 1.5 HP, 1 PHASE, 60 HZ, 115/230 VOLT, 14/7 FULL LOAD AMPS
22400	MS14-2L	LEESON 2.0 HP, 1 PHASE, 60 HZ, 115/230 VOLT, 18.8/9.4 FULL LOAD AMPS
20900	MS14-2B	BALDOR 2.0 HP, 1 PHASE, 50 HZ, 220 VOLT, 9.7 FULL LOAD AMPS



100 Thomas Johnson Drive, Frederick, MD 21702-4600 USA
 Phone (301) 663-1600 • 1-800-638-3326
 Fax (301) 663-1607 • 1-800-447-3326
 Website: www.edcoinc.com • Email: sales@edcoinc.com

Printed in USA
 ©2005

READ AND UNDERSTAND THE OPERATORS INSTRUCTION MANUAL THOROUGHLY BEFORE ATTEMPTING TO OPERATE THIS EQUIPMENT. Death or serious injury could occur if this machine is used improperly.



SAFETY MESSAGES



The safety instructions are preceded by a graphic alert message of DANGER, WARNING, or CAUTION.



Indicates an imminent hazard which, if not avoided, will result in death or serious injury.



Indicates an imminent hazard which, if not avoided, can result in death or serious injury.



Indicates hazards which, if not avoided, could result in serious injury and or damage to the equipment.

GASOLINE

Powered Equipment



- Do not operate gasoline powered equipment without adequate ventilation. Carbon monoxide is an invisible, odorless gas that can kill.

ELECTRICAL

Powered Equipment



- ELECTRICAL HAZARD** - Be sure equipment is properly grounded. Failure to comply could kill or result in serious injury.



The engine exhaust from this product contains chemicals known to the State of California to cause cancer, birth defects or other reproductive harm.

GENERAL INSTRUCTIONS



- You must read and understand the operators instruction manual and all other manuals associated with this machine. For your safety and the safety of others around you, it is extremely important to fully understand how to operate this machine in the way it was intended. Different model machines or older/newer versions of the same model may have different parts and controls that you need to understand. If instructions are not readable or available DO NOT USE this machine and contact the factory for a replacement Manual.
- You must be able to physically handle the bulk weight and power of this machine. If not properly controlled this machine can cause death or serious injury.
- Do not operate this machine in an impaired mental state. You must be able to exercise good judgement and reactions to maintain a safe working environment.
- This is a "one person" machine which means only one operator can be operating the machine at any one time. For the safety of others, maintain a safe operating distance to other personnel. Your work area should be defined and appropriately marked so bystanders and coworkers do not stand or walk near this machine and end up seriously injured by flying debris or exposing them to harmful noise or dust.
- This equipment is for Commercial use. Although this is a "one person" machine your work team should understand how to shut this machine off and quickly get medical help if an accident strikes the operator.
- Keep all guards in place during operation. The guards are to provide protection from inadvertent contact with dangerous moving parts, pinch points, or hot surfaces.
- Wear appropriate Personal Protective Equipment (PPE) including safety glasses, safety boots, work gloves, respiratory protection, hearing protection, and head protection. Do not wear loose clothing that can get tangled in moving parts. Failure to do so could result in dismemberment or death. **Wear an approved respirator when removing hazardous materials or when grinding/cutting dry materials. Some dust particles such as concrete dust can contain silicate particles which can cause silicosis (a very serious lung disease). Contact NIOSH or OSHA for further details. When wet grinding/cutting, avoid contact with the concrete/asphalt slurry which can cause serious skin irritations.**
- You must maintain this machine per the maintenance schedule in the operator manual. Remember before adjusting, servicing, or fueling this machine, disconnect the source of power to the machine by disconnecting the spark plug (Gas models), or by unplugging the electrical power cord (electric models) or air hose (Pneumatic models) AT THE MACHINE so you can assure yourself it remains unplugged while you are working on it. Do not modify this machine. Use only genuine EDCO parts and accessories. Repairs and service should be performed by approved EDCO dealers or authorized technicians.
- You should look carefully around the area before you begin work so you can identify potential hazards such as deck inserts, pipes, columns, openings, electrical cords or outlets, or any other objects protruding from the slab surface.
- This machine has no brain so you must use your own. There is no substitute for safety. The safety decals on the machine are to serve as a reminder for information you must already know before you begin using this machine. Take a moment to reread the safety decals each time you use the machine. If your machine is missing any decals, contact the factory for a replacement (EDCO 1-800-638-3326).

PARTS LIST MANUAL

MODEL MS-14

Section	Page Number
Safety Messages / General Instructions	2
How To Order Replacement Parts	3
Illustration 1 : Main Grouping	4,5
Illustration 2 : Arbor Assembly	6
Illustration 3 : Rolling Table Assembly	6
Illustration 4 : Blade Guard Grouping	7
Illustration 5 : Motor Grouping	8
Illustration 6 : Optional Stand & Foot Pedal Assembly	9
Illustration 7 : Optional Dust Control Vacuum Hood System	10
Optional "Tote-a-Saw" Transporting Wheel Kit	11
Limited Equipment Warranty	back cover

HOW TO ORDER REPLACEMENT PARTS

- To insure product safety and reliability, always use genuine EDCO replacement parts when making repairs to the equipment.
- When calling for parts, specify the MODEL and SERIAL NUMBER of the machine which can be found on the NAME PLATE. Keep that information in the space provided. In addition to this information, give part number, description and quantity as listed on the parts list to your parts representative.
- Please note: Due to improvements and changes in the equipment, the illustrations shown may be different than the actual machine.

FILL IN INFORMATION BELOW

Date of Purchase _____

Name of Machine _____

Model # _____

Serial # _____

Belt Size(s) _____

Toll Free: 1-800-638-3326

FAX: 1-800-447-3326

email: sales@edcoinc.com

www.edcoinc.com



100 Thomas Johnson Drive, Frederick, MD 21702-4600 USA

Phone (301) 663-1600 • 1-800-638-3326

Fax (301) 663-1607 • 1-800-447-3326

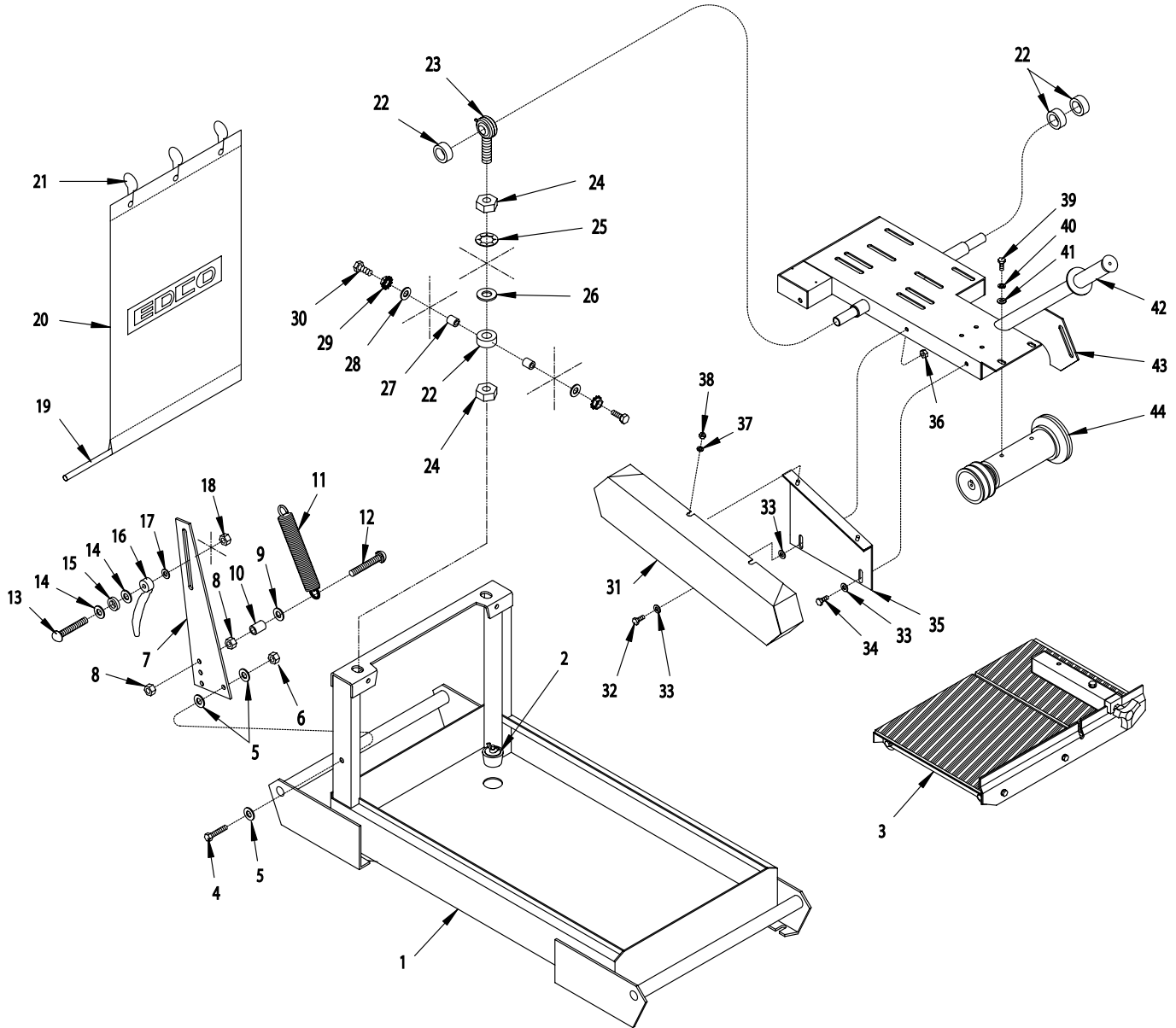
Website: www.edcoinc.com • Email: sales@edcoinc.com

Printed in USA

©2005

Page 3

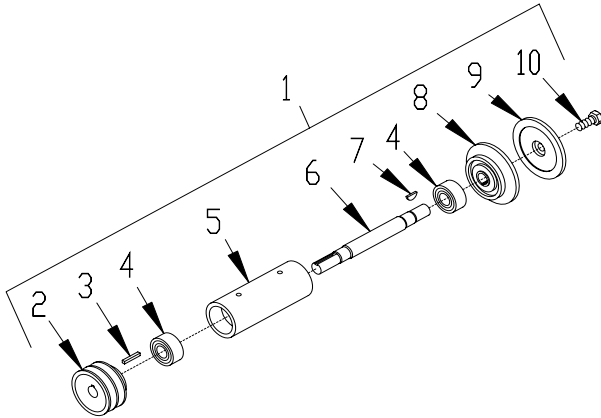
ILLUSTRATION 1 : MAIN GROUPING



PARTS LISTING - ILLUSTRATION 1 : MAIN GROUPING			
ITEM#	PART#	DESCRIPTION	QTY.
1	40052	PANASSEMBLY	1
2	40378	STOPPERASSEMBLY 1-1/2"	1
3	40055	TABLE COMPLETE, ROLLING (REFER TO ILLUS. 3)	1
4	10029	SCREW, CAP 3/8-24x1-3/4	1
5	10025	WASHER, FLAT 3/8	3
6	10004	NUT, LOCK 3/8-24	1
7	40031	PLATE, PIVOT LOCK	1
8	10404	NUT 3/8-16	2
9	10025	WASHER, FLAT 3/8	1
10	10011	SPACER, STEEL 5/8"ODx3/8"IDx3/8"	1
11	40032E	SPRING, EXT. 1.125"ODx7-3/4"L	1
12	10804	BOLT, CARRIAGE 3/8-16x1-1/2	1
13	10335	BOLT, CARRIAGE 3/8-16x2-1/2	1
14	10312	WASHER, FLAT 1/2	2
15	79035	BUSHING, RUBBER 1-1/16"ODx5/8"IDx1/4"THK	1
16	40044	NUT, TAIL HANDLE 3/8-16	1
17	10025	WASHER, FLAT 3/8	1
18	10404	NUT 3/8-16	1
19	40377	CURTAIN ROD 1/2" DIA.x13"L	1
20	40375	CURTAIN 15"x28" W/ LOGO	1
21	40376	HOOK, CURTAIN	1
22	10428	COLLAR, LOCKING 3/4"ID	5
23	10935	ROD END, MALE 3/4-16	2
24	10429	NUT, JAM 3/4-16	4
25	10609	WASHER, LOCK, INT. TOOTH 3/4"	2
26	10009	WASHER, FLAT 3/4	2
27	10439	THREAD-SERT 1/4-20, BLIND RIVET	4
28	10213	WASHER, FLAT 5/16	4
29	10861	NUT, KEPS 1/4-20	4
30	10905	SCREW, CAP 1/4-20x1-1/4	4
31	40008	COVER, BELT	1
32	10806	SCREW, CAP 5/16-18x1	1
33	10213	WASHER, FLAT 5/16	3
34	10053	SCREW, CAP 5/16-18x3/4	1
35	40009	BRACKET, BELT COVER	1
36	10807	NUT, LOCK 5/16-18	2
37	10602	WASHER, FLAT 1/4	2
38	10861	NUT, KEPS 1/4-20	2
39	10048	SCREW, CAP 5/16-24x3/4	4
40	10801	WASHER, LOCK 5/16	4
41	10213	WASHER, FLAT 5/16	4
42	61108	GRIP, HAND 1" MODEL SX	1
43	40057	MAIN DECK	1
44	40056	ARBORASSEMBLY w/ SHEAVE (REFER TO ILLUS. 2)	1

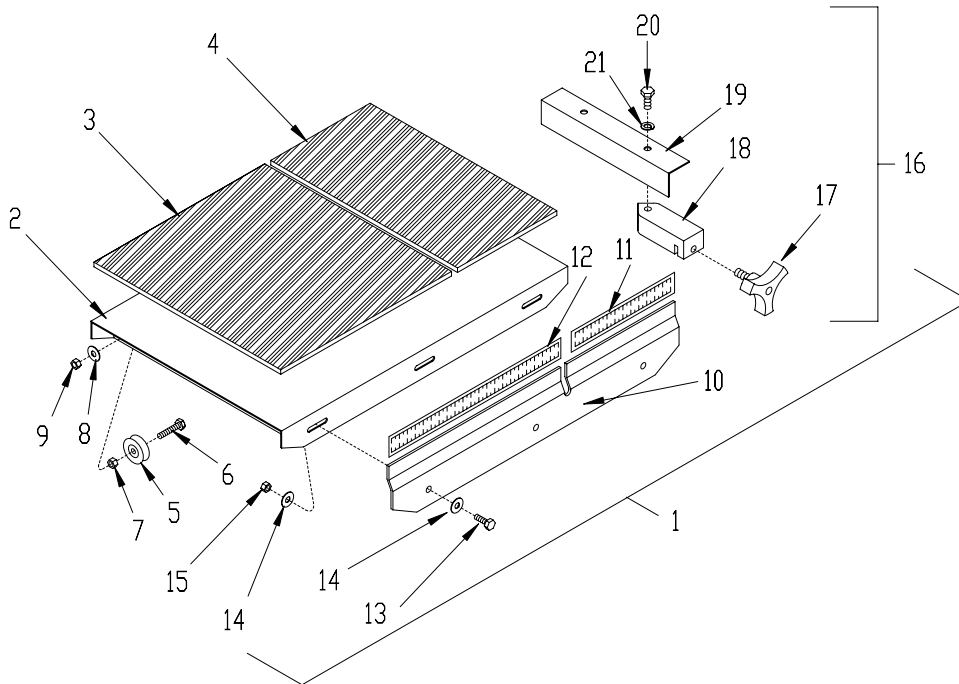


ILLUSTRATION 2 : ARBOR ASSEMBLY



ITEM#	PART#	DESCRIPTION	QTY.
1	40056	ARBOR ASSEMBLY w/ SHEAVE (INCLUDES ITEMS 2-10)	1
2	40005	SHEAVE 3" ODx2 GR.Ax3/4" BORE	1
3	10060	KEY 3/16 SQ.x1-1/4	1
4	40018	BEARING, RADIAL BALL 20x47x20.6mm	2
5	40020	ARBOR HOUSING	1
6	40021	ARBOR SHAFT 8-7/8"L	1
7	40036	KEY, WOODRUFF 1/8x3/8 (#403)	1
8	40022	ARBOR BACKING PLATE 4"	1
9	40023	ARBOR BLADE CAP 4"	1
10	10321	SCREW, CAP 1/2-20x1-1/4	1

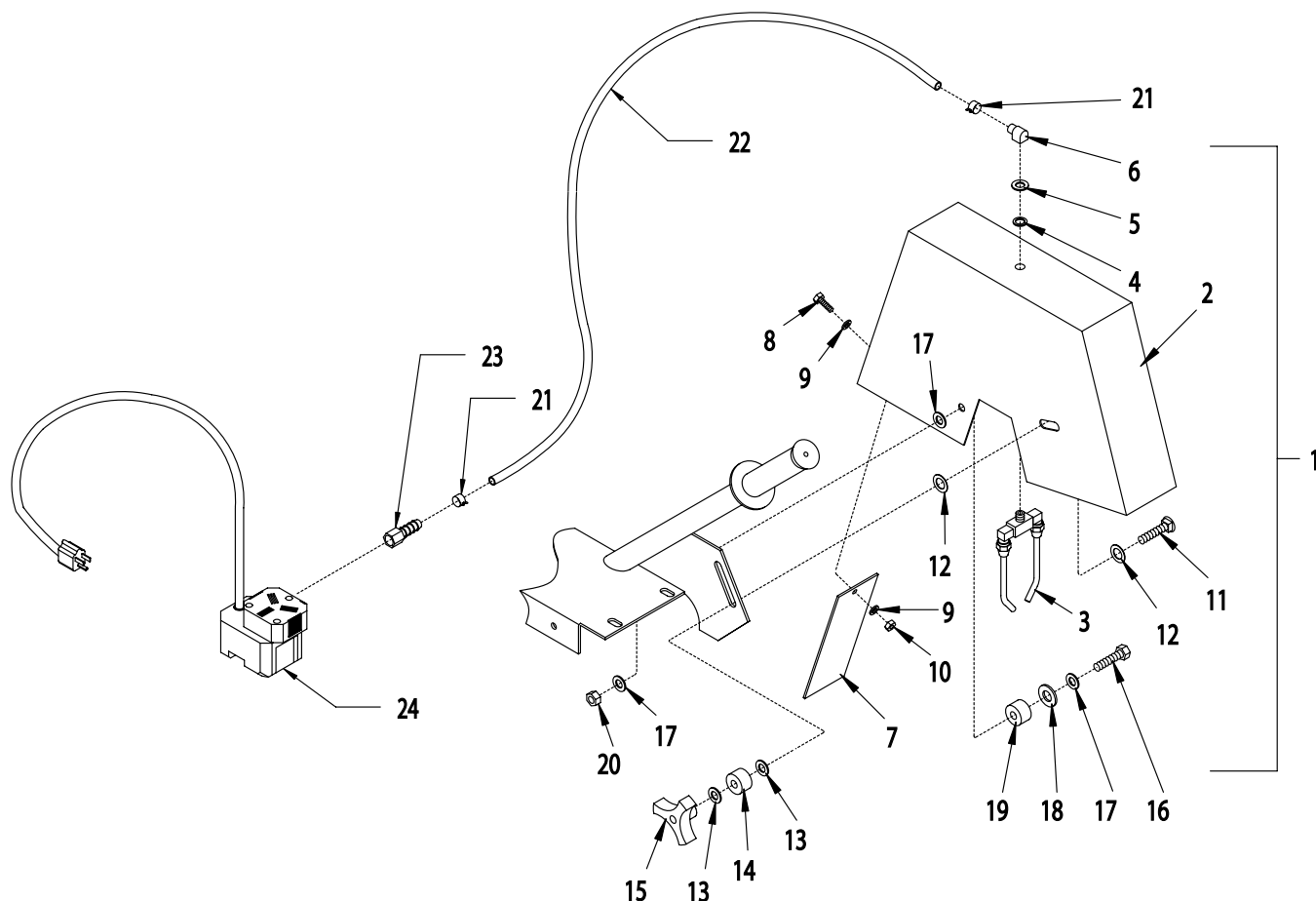
ILLUSTRATION 3 : ROLLING TABLE ASSEMBLY



ITEM#	PART#	DESCRIPTION	QTY.	ITEM#	PART#	DESCRIPTION	QTY.
1	40055	TABLE COMPLETE, ROLLING (INCLUDES ITEMS 2-21)	1	11	40424	RULE, ADHESIVE BACKED, 1-7, L-R	1
2	40404	TABLE, ROLLING	1	12	40423	RULE, ADHESIVE BACKED, 1-13, R-L	1
3	40405	PAD 11-5/8x10-3/4x1/4	1	13	10018	SCREW, CAP 1/4-20x3/4	3
4	40406	PAD 11-5/8x7x1/4	1	14	10602	WASHER, FLAT 1/4	6
5	14082	TRACK WHEEL (PULLEY BRG.) 1-1/4 DIA.x1/4 BORE	4	15	10861	NUT, KEPS 1/4-20	3
6	10905	SCREW, CAP 1/4-20x1-1/4	4	16	40069	GUIDE SUBASSEMBLY, CUT (INCLUDES ITEM 17-21)	1
7	10013	NUT 1/4-20	4	17	40425	KNOB, 3-PRONG w/ 3/8-16x5/8 STUD	1
8	10602	WASHER, FLAT 1/4	4	18	42015	BLOCK, CUT GUIDE	1
9	10861	NUT, KEPS 1/4-20	4	19	40058	BRACKET, CUT GUIDE	1
10	40403	TABLE FRONT PANEL	1	20	10053	SCREW, CAP 5/16-18x3/4	1
				21	10801	WASHER, LOCK 5/16	1



ILLUSTRATION 4 : BLADE GUARD GROUPING



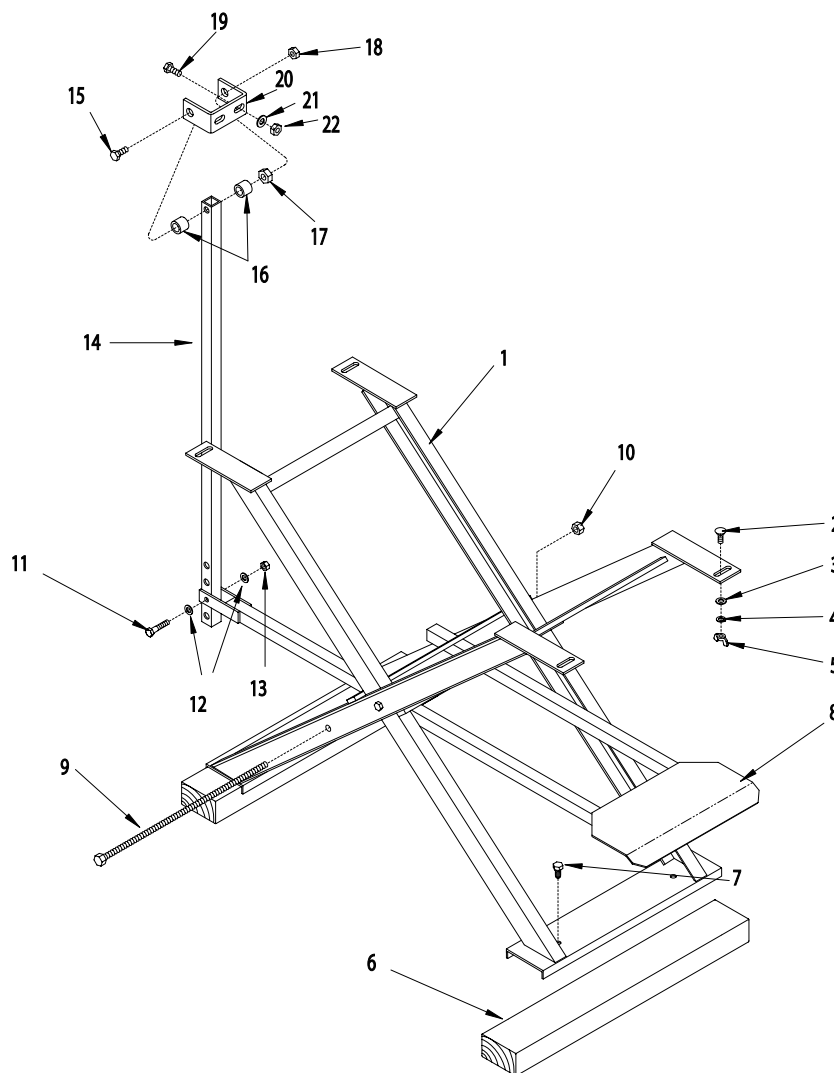
ITEM#	PART#	DESCRIPTION	QTY.	ITEM#	PART#	DESCRIPTION	QTY.
1	40013A	GUARD SUBASSEMBLY, BLADE (INCLUDES ITEMS 2 THRU 10)	1	13	10025	WASHER, FLAT 3/8	2
2	40013	GUARD, BLADE 14"	1	14	10034	BUSHING, RUBBER 1" ODx3/8" IDx5/8"THK	1
3	81004	NOZZLE, COOLANT 1/8MPT W/ 4"TUBES	1	15	80011	KNOB, 3-PRONG w/ 3/8-16 THD.	1
4	10936	WASHER, NYLON .437" IDx.629" ODx.050"THK	1	16	10816	SCREW, CAP 3/8-24x1-1/2	1
5	40309	WASHER, ALUM. .437" IDx.628" ODx.063"THK	1	17	10025	WASHER, FLAT 3/8	3
6	40015	ELBOW, STREET 1/8 NPTx90 (BRASS)	1	18	10312	WASHER, FLAT 1/2	1
7	40012	FLAP, SPLASH 2-1/2x7	1	19	10034	BUSHING, RUBBER 1" ODx3/8" IDx5/8"THK	1
8	10018	SCREW, CAP 1/4-20x3/4	1	20	10004	NUT, LOCK 3/8-24	1
9	10602	WASHER, FLAT 1/4	2	21	10763	CLAMP, HOSE SPRING-TYPE 7/16" RED	2
10	10015	NUT, LOCK 1/4-20	1	22	40016	HOSE 5/16" IDx48"L	1
11	10087	BOLT, CARRIAGE 3/8-16x1-3/4	1	23	10739	BARB, 5/16" HOSEx1/4 FPT	1
12	10040	WASHER, GARRET 17/32"IDx1"ODx.054"THK	2	24	40017	PUMP, WATER, 115VAC, SUBMERSIBLE	1



100 Thomas Johnson Drive, Frederick, MD 21702-4600 USA
 Phone (301) 663-1600 • 1-800-638-3326
 Fax (301) 663-1607 • 1-800-447-3326
 Website: www.edcoinc.com • Email: sales@edcoinc.com

Printed in USA
 ©2005

ILLUSTRATION 6 : OPTIONAL STAND & FOOT PEDAL ASSEMBLY



STAND, FOLDING - PART# 21800 (INCLUDES ITEMS 1 THRU 7)
 FOOT PEDAL KIT - PART# 20250 (INCLUDES ITEMS 8 THRU 22)

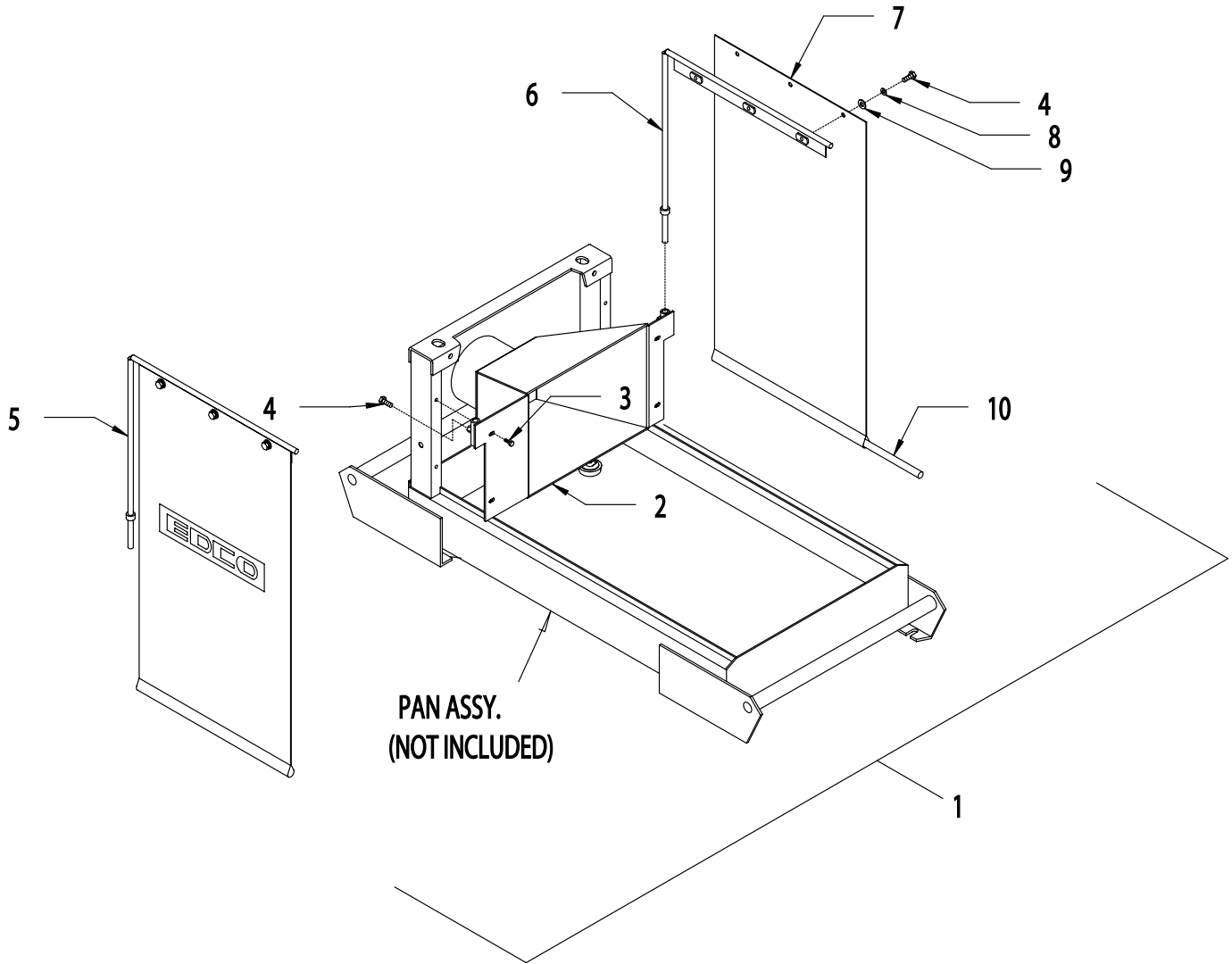
ITEM #	PART#	DESCRIPTION	QTY.	ITEM #	PART#	DESCRIPTION	QTY.
1	40371	STAND FRAME	1	12	10025	WASHER, FLAT 3/8	2
2	10802	BOLT, CARRIAGE 3/8-16x1	4	13	10004	NUT, LOCK 3/8-24	1
3	10025	WASHER, FLAT 3/8	4	14	40382	LINKAGE, DRAG	1
4	10811	WASHER, LOCK 3/8	4	15	10324	SCREW, CAP 1/2-13x3-1/2	1
5	10903	NUT, WING 3/8-16	4	16	40386	SPACER 1/2"IDx5/8"L	2
6	21801	SKID BOARD 2x4x24"L	2	17	10417	NUT 1/2-13	1
7	10367	BOLT, LAG 3/8 X 1"L	4	18	10407	NUT, LOCK 1/2-13	1
8	40381	TREADLE (FOOT PEDAL)	1	19	10907	SCREW, CAP 3/8-16x3/4	2
9	40383	BOLT, ALLTHREAD ROD 1/2-13x17-1/2"L	1	20	40385	BRACKET, FOOT PEDAL LINKAGE	1
10	10407	NUT, LOCK 1/2-13	1	21	10811	WASHER, LOCK 3/8	2
11	10029	SCREW, CAP 3/8-24x1-3/4	1	22	10404	NUT 3/8-16	2



100 Thomas Johnson Drive, Frederick, MD 21702-4600 USA
 Phone (301) 663-1600 • 1-800-638-3326
 Fax (301) 663-1607 • 1-800-447-3326
 Website: www.edcoinc.com • Email: sales@edcoinc.com

Printed in USA
 ©2005

**ILLUSTRATION 7 : OPTIONAL DUST CONTROL
VACUUM HOOD SYSTEM**



ITEM#	PART#	DESCRIPTION	QTY.
1	40075	VACUUM HOOD SYSTEM COMPLETE (INCLUDES ITEMS 2-10)	
2	40076	VACUUM HOOD	1
3	10846	SCREW, CAP STSHW 1/4-20x1/2	4
4	10018	SCREW, CAP 1/4-20x3/4	8
5	40078	CURTAIN ROD, VAC SYSTEM, L.H.	1
6	40077	CURTAIN ROD, VAC SYSTEM, R.H	1
7	40375	CURTAIN 15"x28" w/ LOGO	2
8	10038	WASHER, LOCK 1/4	6
9	10602	WASHER, FLAT 1/4	6
10	40377	CURTAIN ROD 1/2"DIA. X 13"L	2

OPTIONAL TAS ("TOTE-A-SAW") TRANSPORTING WHEELS
PART NO. 20350



To install: Just insert shaft ends through holes in the side of rear handle and position folds so they catch over the top. Lift by the front handle and saw is ready to transport.

LIFT FRONT HANDLE
TO TRANSPORT



INSTALLED



LIMITED EQUIPMENT WARRANTY

Equipment Development Company, Inc. herein referred to as EDCO warrants that each new unit manufactured by EDCO to be free from defects in material and workmanship in normal use and service for a period of (1) one year (except in the case of the cutter drum assembly on all model concrete asphalt planes, in which case the warranty period shall be 90 days) from date of shipment to the original buyer or equipment rental center owner.

EDCO will, at its option, repair or replace, at the EDCO factory or at a point designated by EDCO any part, which shall appear to the satisfaction of EDCO inspection to have been defective in material or workmanship.

This warranty, does not apply to failure occurring as a result of abuse, misuse, negligent repairs, corrosion, erosion, normal wear and tear, alterations or modifications made to the product without express written consent of EDCO: or failure to follow the recommended operating practices and maintenance procedures as provided in the products operating and maintenance manuals.

This warranty does not obligate EDCO to bear any transportation charges in connection with the replacement or repair of defective parts. This warranty does not obligate EDCO to bear any expense for travel time or of personnel in connection with any service calls.

Accessories or equipment furnished and installed on the product by EDCO but manufactured by others, including but not limited to engines, motors, electrical equipment, transmissions, etc., shall carry the accessory manufacturers' own warranty.

THIS WARRANTY IS IN LIEU OF ALL OTHER WARRANTIES, EXPRESSED OR IMPLIED, OR STATUTORY, INCLUDING ANY WARRANTIES OF MERCHANTABILITY OR OF FITNESS FOR A PARTICULAR PURPOSE.

LIABILITY LIMITATIONS

The remedies of the user set forth under provisions of warranty outlined above are the exclusive and total liability of EDCO with the respect to their sale or the equipment and service furnished hereunder, in connection with the performance or breach thereof, or from the sale, delivery, installation, repair or technical direction covered by or furnished under the sale, whether based on contract, warranty, negligence, indemnity, strict liability, or otherwise shall not exceed the purchase price of the unit of equipment upon which such liability is based.

EDCO will not in any event be liable to the user, any successors in interest or any beneficiary or assignee relating to this sale for any consequential, incidental, indirect, special or punitive damages arising out of this sale or any breach thereof, or any defects on, or failure of, or malfunction of the equipment under this sale based upon loss of use, lost profits or revenue, interest, lost goodwill, work stoppage, impairment of other goods, loss by reason of shutdown or non-operation, increased expenses of operation of the equipment, cost of purchase or replacement power of claims of users or customers of the user for service interruption whether or not such loss or damage is based on contract, warranty, negligence, indemnity, strict liability, or otherwise.

EDCO reserves the right to modify, alter and improve any part or parts without incurring any obligation to replace any part or parts previously sold without such modified, altered or improved part or parts.

No person is authorized to give any other warranty or to assume any additional obligation on EDCO's behalf unless made in writing and signed by an officer of EDCO.

Equipment Development Company, Inc.

USE ONLY GENUINE EDCO PARTS AND ACCESSORIES

For your own safety, the safety of others and the life of your machine



3/4" HEX, ARBOR WRENCH KIT - PART NO. 53021K

Can be used on all EDCO/CONTRx MASONRY or HARDSCAPE saws except models GMS-10 and HSS-10

Use on Model:
MS-14
GMS-14
GMS-14A
HSS-14
HSS-20
MS-20
GMS-20

3/4" HEX
Arbor Wrench
P/N 53021



Wrench Bracket
P/N 53029



1/4-20 x 1/2"
Self-Tapping Screws
P/N 10846

Tools Required:
7/32" HSS Drill Bit and Drill
3/8" Nut Driver or Socket w/ratchet
Hammer and center punch

