

**GASOLINE POWERED
14" MASONRY SAW
PARTS LIST MANUAL**



Model GMS-14A

(SHOWN WITH OPTIONAL FOLDING STAND)



100 Thomas Johnson Drive, Frederick, MD 21702-4600 USA
Phone (301) 663-1600 • 1-800-638-3326
Fax (301) 663-1607 • 1-800-447-3326
Website: www.edcoinc.com • Email: sales@edcoinc.com

Printed in USA
©2002

READ AND UNDERSTAND THE OPERATORS INSTRUCTION MANUAL THOROUGHLY BEFORE ATTEMPTING TO OPERATE THIS EQUIPMENT. Death or serious injury could occur if this machine is used improperly.



SAFETY MESSAGES



The safety instructions are preceded by a graphic alert message of DANGER, WARNING, or CAUTION.



Indicates an imminent hazard which, if not avoided, will result in death or serious injury.



Indicates an imminent hazard which, if not avoided, can result in death or serious injury.



Indicates hazards which, if not avoided, could result in serious injury and or damage to the equipment.

GASOLINE

Powered Equipment



- Do not operate gasoline powered equipment without adequate ventilation. Carbon monoxide is an invisible, odorless gas that can kill.

ELECTRICAL

Powered Equipment



- ELECTRICAL HAZARD** - Be sure equipment is properly grounded. Failure to comply could kill or result in serious injury.



The engine exhaust from this product contains chemicals known to the State of California to cause cancer, birth defects or other reproductive harm.

GENERAL INSTRUCTIONS



- You must read and understand the operators instruction manual and all other manuals associated with this machine. For your safety and the safety of others around you, it is extremely important to fully understand how to operate this machine in the way it was intended. Different model machines or older/newer versions of the same model may have different parts and controls that you need to understand. If instructions are not readable or available DO NOT USE this machine and contact the factory for a replacement Manual.
- You must be able to physically handle the bulk weight and power of this machine. If not properly controlled this machine can cause death or serious injury.
- Do not operate this machine in an impaired mental state. You must be able to exercise good judgement and reactions to maintain a safe working environment.
- This is a "one person" machine which means only one operator can be operating the machine at any one time. For the safety of others, maintain a safe operating distance to other personnel. Your work area should be defined and appropriately marked so bystanders and coworkers do not stand or walk near this machine and end up seriously injured by flying debris or exposing them to harmful noise or dust.
- This equipment is for Commercial use. Although this is a "one person" machine your work team should understand how to shut this machine off and quickly get medical help if an accident strikes the operator.
- Keep all guards in place during operation. The guards are to provide protection from inadvertent contact with dangerous moving parts, pinch points, or hot surfaces.
- Wear appropriate Personal Protective Equipment (PPE) including safety glasses, safety boots, work gloves, respiratory protection, hearing protection, and head protection. Do not wear loose clothing that can get tangled in moving parts. Failure to do so could result in dismemberment or death. **Wear an approved respirator when removing hazardous materials or when grinding/cutting dry materials. Some dust particles such as concrete dust can contain silicate particles which can cause silicosis (a very serious lung disease). Contact NIOSH or OSHA for further details. When wet grinding/cutting, avoid contact with the concrete/asphalt slurry which can cause serious skin irritations.**
- You must maintain this machine per the maintenance schedule in the operator manual. Remember before adjusting, servicing, or fueling this machine, disconnect the source of power to the machine by disconnecting the spark plug (Gas models), or by unplugging the electrical power cord (electric models) or air hose (Pneumatic models) AT THE MACHINE so you can assure yourself it remains unplugged while you are working on it. Do not modify this machine. Use only genuine EDCO parts and accessories. Repairs and service should be performed by approved EDCO dealers or authorized technicians.
- You should look carefully around the area before you begin work so you can identify potential hazards such as deck inserts, pipes, columns, openings, electrical cords or outlets, or any other objects protruding from the slab surface.
- This machine has no brain so you must use your own. There is no substitute for safety. The safety decals on the machine are to serve as a reminder for information you must already know before you begin using this machine. Take a moment to reread the safety decals each time you use the machine. If your machine is missing any decals, contact the factory for a replacement (EDCO 1-800-638-3326).

PARTS LIST MANUAL

MODEL GMS-14A

<u>Section</u>	<u>Page Number</u>
Safety Messages / General Instructions	2
How To Order Replacement Parts	3
Illustration #1 : Main Grouping	4,5
Illustration #2 : Arbor Assembly Grouping	6
Illustration #3 : Rolling Table Assembly Grouping	7
Illustration #4 : Water Pump & Blade Guard Grouping	8,9
Illustration #5 : Engine Grouping (5.5 & 6.5 HP Honda)	10,11
Illustration #6: Engine Grouping (9 HP Honda)	12,13
Illustration #7 : Belt & Drive Shaft Grouping	14
Illustration #8 : Optional Stand & Foot Pedal Assembly Grouping	15
Limited Equipment Warranty	back cover

GMS-14A PORTABLE MASONRY SAWS		
PART NO.	MODEL	GASOLINE ENGINE POWER OPTION
26300	GMS14A-5.5H	5.5 HP HONDA GX160
26400	GMS14A-6.5H	6.5 HP HONDA GX200
26500	GMS14A-9H	9 HP HONDA GX270

HOW TO ORDER REPLACEMENT PARTS

- To insure product safety and reliability, always use genuine EDCO replacement parts when making repairs to the equipment.
- When calling for parts, specify the MODEL and SERIAL NUMBER of the machine which can be found on the NAME PLATE. Keep that information in the space provided. In addition to this information, give part number, description and quantity as listed on the parts list to your parts representative.
- Please note: Due to improvements and changes in the equipment, the illustrations shown may be different than the actual machine.

FILL IN INFORMATION BELOW

Date of Purchase _____

Name of Machine _____

Model # _____

Serial # _____

Belt Size(s) _____

Toll Free: 1-800-638-3326

FAX: 1-800-447-3326

email: sales@edcoinc.com

www.edcoinc.com



100 Thomas Johnson Drive, Frederick, MD 21702-4600 USA

Phone (301) 663-1600 • 1-800-638-3326

Fax (301) 663-1607 • 1-800-447-3326

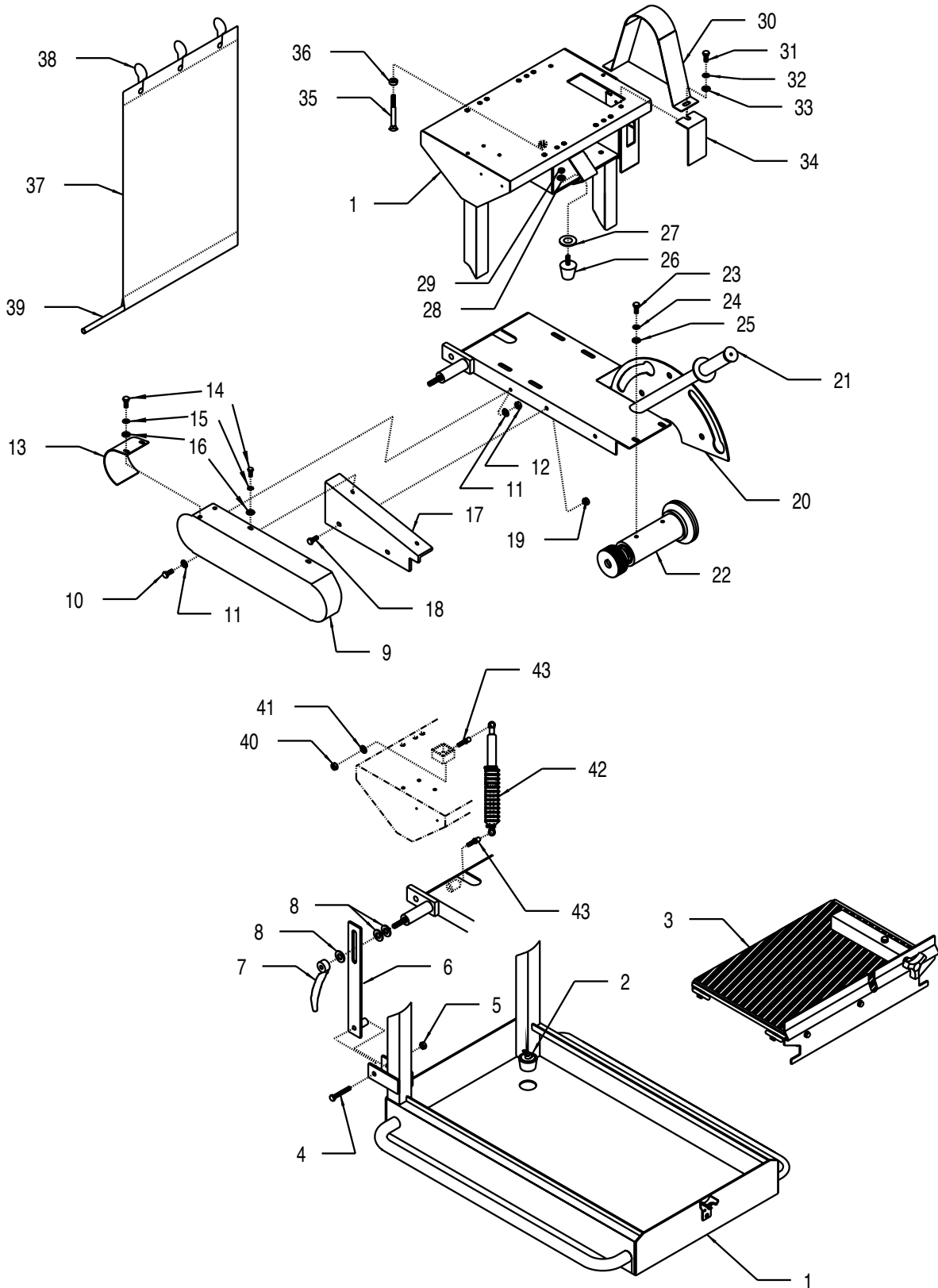
Website: www.edcoinc.com • Email: sales@edcoinc.com

Printed in USA

©2002

Page 3

ILLUSTRATION # 1 : MAIN GROUPING



PARTS LISTING - ILLUSTRATION 1 : MAIN GROUPING			
ITEM#	PART#	DESCRIPTION	QTY.
1	40601	PAN w/ ENGINE DECK	1
2	40378	STOPPER ASSEMBLY 1 1/2"	1
3	40602A	TABLE COMPLETE, ROLLING (REFER TO ILLUSTRATION 3 FOR SUBASSY.)	1
4	10336	SCREW, CAP 3/8-24x2 1/4	1
5	10004	NUT, LOCK 3/8-24	1
6	40609	LOCKING BAR, ARBOR HEIGHT	1
7	40358	NUT, TAIL HANDLE 1/2-13	1
8	10312	WASHER, FLAT 1/2	3
9	40611	COVER, SIDE BELT	1
10	10018	SCREW, CAP 1/4-20x3/4	1
11	10602	WASHER, FLAT 1/4	2
12	10861	NUT, KEPS 1/4-20	1
13	40612	COVER END CAP, SIDE BELT	1
14	10834	SCREW, CAP 1/4-20x1/2	4
15	10038	WASHER, LOCK 1/4	4
16	10602	WASHER, FLAT 1/4	4
17	40613	MOUNTING BRACKET, BELT COVER	1
18	10053	SCREW, CAP 5/16-18x3/4	2
19	10807	NUT, LOCK 5/16-18	2
20	40606	DECK, ARBOR	1
21	61108	GRIP, HAND 1" MODEL SX	1
22	40670	ARBOR ASSY. W/ SHEAVE (REFER TO ILLUSTRATION 2 FOR SUBASSY.)	1
23	10048	SCREW, CAP 5/16-24x3/4	4
24	10801	WASHER, LOCK 5/16	4
25	10213	WASHER, FLAT 5/16	2
26	10931	FOOT, RUBBER, w/ STUD 5/16-18x5/8	1
27	10009	WASHER, FLAT 3/4	1
28	10801	WASHER, LOCK 5/16	1
29	10054	NUT 5/16-18	1
30		COVER, TOP BELT	1
	40621	5.5 & 6.5 HP HONDA	
	40622	9 HP HONDA	
31	10053	SCREW, CAP 5/16-18x3/4	2
32	10801	WASHER, LOCK 5/16	2
33	10213	WASHER, FLAT 5/16	2
34	40638	GUARD, WATER PUMP WHEEL	1
35	10388	BOLT, CARRIAGE 3/8-16x3 (FULL THD.)	1
36	10404	NUT 3/8-16	1
37	40375	CURTAIN 15"x28" WITH LOGO	1
38	40376	HOOK, CURTAIN	3
39	40377	CURTAIN ROD 1/2" DIA. x 13"L	1
40	10054	NUT 5/16-18	1
41	10801	WASHER, LOCK 5/16	1
42	43010	SPRING ASSEMBLY COMPLETE, GAS (SEE BELOW FOR BREAKDOWN)	1
		<i>INDIVIDUAL REPLACEMENT PARTS:</i>	
	43007	SPRING, GAS 1629EM	1
	43008	BELLOWS, GAS SPRING (DUST BOOT)	1
	10982	TIE, CABLE, BLACK NYLON 11 1/4"	2
	43009	CLIP, SAFETY, GAS SPRING	2
43	43011	STUD, 10mm BALL, 5/16-18x.662	2



100 Thomas Johnson Drive, Frederick, MD 21702-4600 USA

Phone (301) 663-1600 • 1-800-638-3326

Fax (301) 663-1607 • 1-800-447-3326

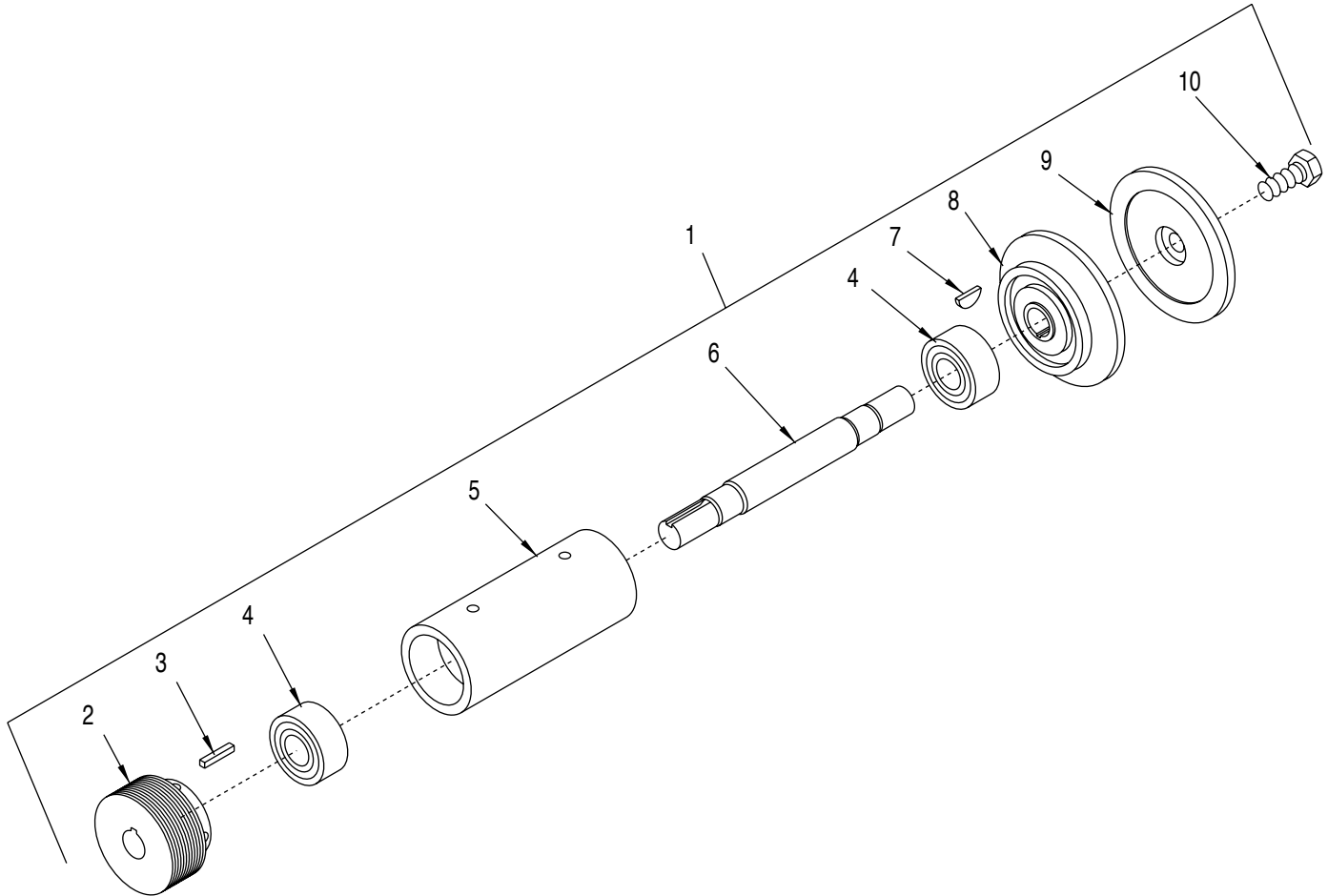
Website: www.edcoinc.com • Email: sales@edcoinc.com

Printed in USA

©2002

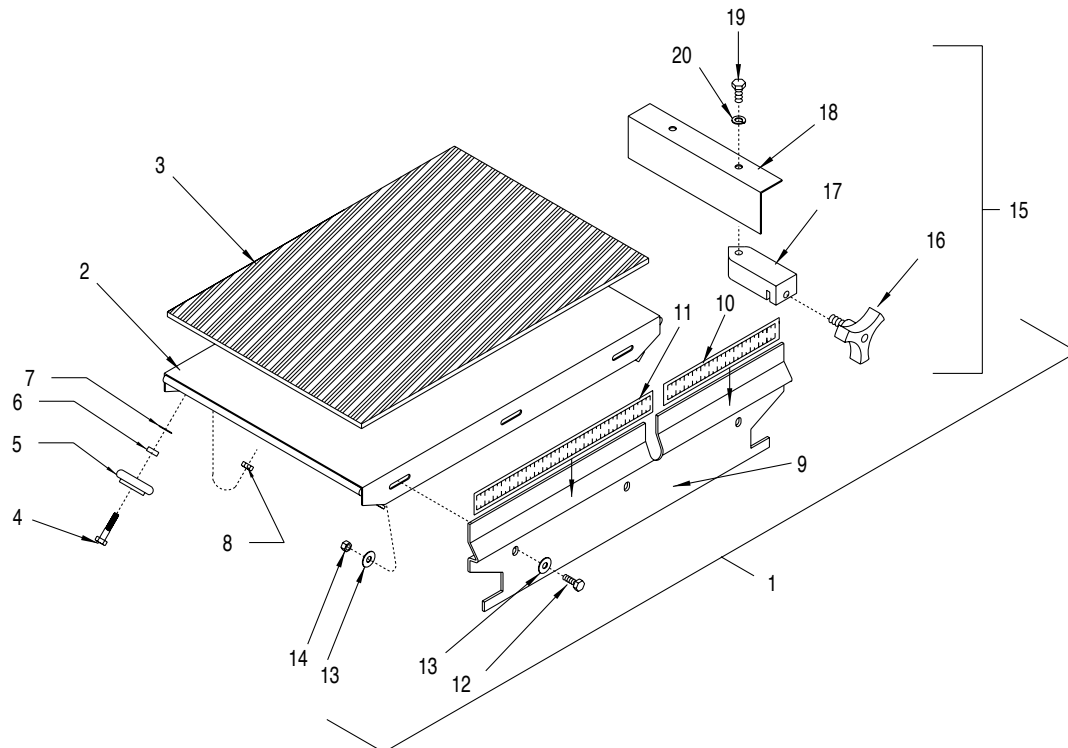
Page 5

ILLUSTRATION # 2 : ARBOR ASSEMBLY GROUPING



ITEM #	PART#	DESCRIPTION	QTY.
1	40670	ARBOR ASSEMBLY W/ SHEAVE (ITEMS 2-10)	1
2	40649	SHEAVE 2.65" ODx10 GR.J x 3/4" BORE	1
3	10060	KEY 3/16" SQ. x 1-1/4"L	1
4	40018	BEARING, RADIAL BALL 20x47x20.6	2
5	40607	ARBOR, HOUSING	1
6	40608	ARBOR, SHAFT	1
7	40036	KEY, WOODRUFF 1/8 x 3/8 (#403)	1
8	40022	ARBOR, BACKING PLATE, MASONRY SAW	1
9	40023	ARBOR, BLADE RETAINING CAP, MASONRY SAW	1
10	10321	SCREW, CAP 1/2-20 x 1-1/4	1



ILLUSTRATION # 3 : ROLLING TABLE ASSEMBLY GROUPING


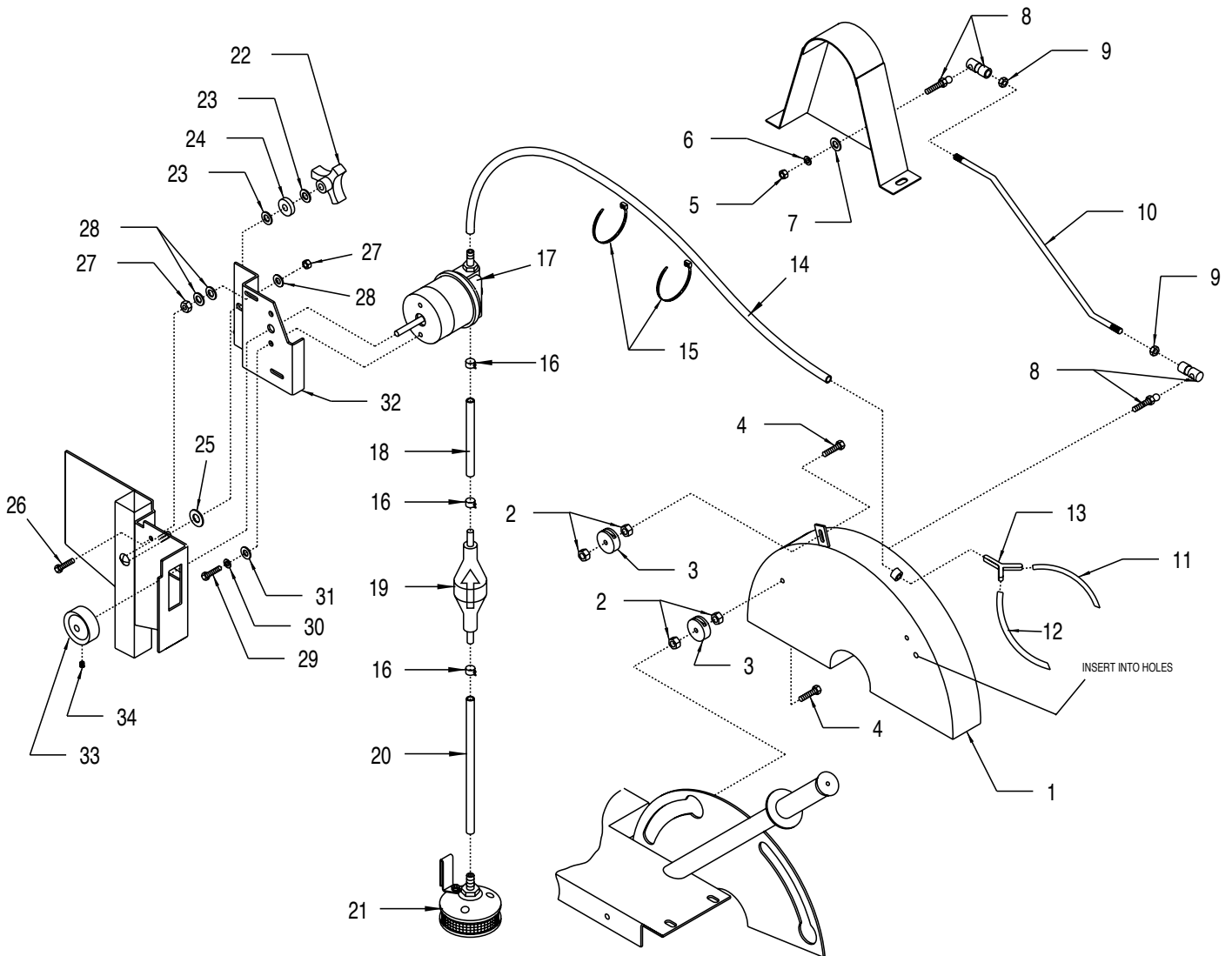
ITEM #	PART #	DESCRIPTION	QTY.
1	40602A	TABLE COMPLETE, ROLLING (ITEMS 2-20)	1
2	40602	TABLE, ROLLING	1
3	40656	PAD 11 3/4 X 18 X 1/4, ROLL TABLE	1
4	10806	SCREW, CAP 5/16-18 X 1	4
5	40605A	WHEEL W/ BEARING, ROLL TABLE	4
6	10113	SPACER, STL 9/16"O.D.X3/8" I.D.X7/32"	4
7	11558	WASHER, FLAT S.S. .328" IDx.562" ODx.025" THK.	SHIM AS REQUIRED
	11559	WASHER, FLAT S.S. .328" IDx.562" ODx.058" THK.	
	10213	WASHER, FLAT 5/16	
8	10807	NUT, LOCK 5/16-18	4
9	40603	TABLE FRONT PANEL, ROLL	1
10	40424	RULE, ADHESIVE BACKED 1-7, L-R	1
11	40423	RULE, ADHESIVE BACKED 1-13, R-L	1
12	10018	SCREW, CAP 1/4-20X3/4	3
13	10602	WASHER, FLAT 1/4	6
14	10861	NUT, KEPS 1/4-20	3
15	40604A	CUT GUIDE ASSEMBLY COMPLETE (ITEMS 16-20)	1
16	40425	KNOB, 3 PRONG W/ 3/8-16X5/8 STUD	1
17	42015	BLOCK, CUT GUIDE, MASONRY SAW	1
18	40604	BRACKET, CUT GUIDE	1
19	10053	SCREW, CAP 5/16-18X3/4	1
20	10801	WASHER, LOCK 5/16	1



100 Thomas Johnson Drive, Frederick, MD 21702-4600 USA
 Phone (301) 663-1600 • 1-800-638-3326
 Fax (301) 663-1607 • 1-800-447-3326
 Website: www.edcoinc.com • Email: sales@edcoinc.com

Printed in USA
 ©2002

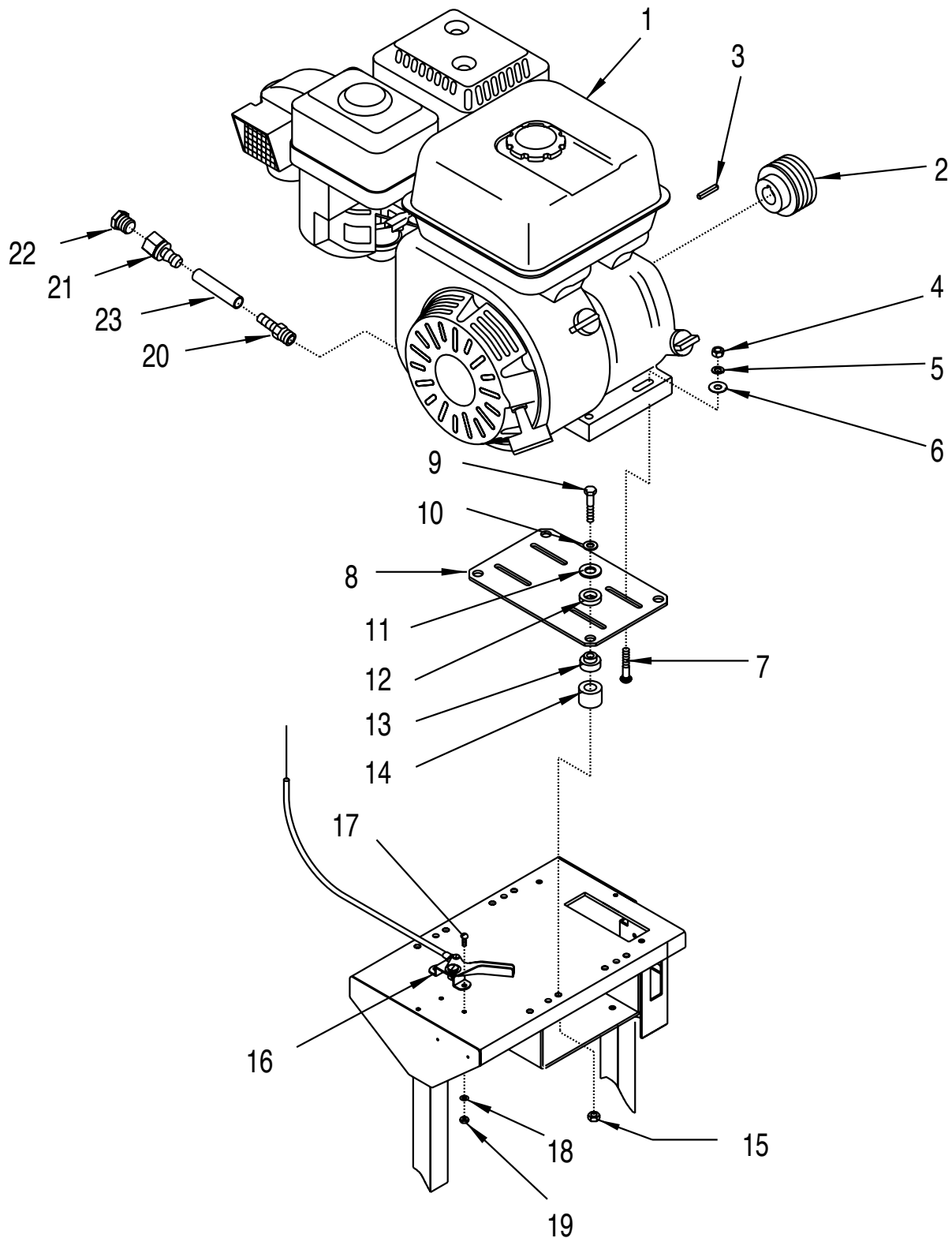
ILLUSTRATION # 4 : WATER PUMP & BLADE GUARD GROUPING



PARTS LISTING - ILLUSTRATION 4 : WATER PUMP & BLADE GUARD GROUPING			
ITEM #	PART #	DESCRIPTION	QTY.
1	40615	GUARD, BLADE 14"	1
2	10015	NUT, LOCK 1/4-20	6
3	40636	SLIDER GUIDE, BLADE GUARD	3
4	10031	SCREW, CAP 1/4-20x1	3
5	10424	NUT 5/16-24	1
6	10801	WASHER, LOCK 5/16	1
7	10213	WASHER, FLAT 5/16	1
8	40617	B.J.LINKAGE, QUICK-DISC. 5/16-24	2
9	10424	NUT 5/16-24	2
10	40616	ROD, BLADE GUARD LEVELER	1
11	40654	HOSE 1/4" I.D.x6"L	1
12	40655	HOSE 1/4" I.D.x7"L	1
13	99323	BARBED FITTING, "Y" 1/4" HOSE (PLASTIC)	1
14	40653	HOSE 1/4" I.D.x24"L	1
15	10982	TIE, CABLE, BLACK NYLON 11 1/4"	2
16	10763	CLAMP, HOSE SPRING-TYPE 7/16" (RED)	3
17	42230	PUMP ASSEMBLY, WATER (PARTS BREAKDOWN IS AVAILABLE)	1
18	40368	HOSE 5/16" I.D.x7"L	1
19	40049	BULB, PRIMER 5/16"	1
20	40397	HOSE 5/16" I.D.x9"L	1
21	40301	FILTER ASSSEMBLY, WATER (PARTS BREAKDOWN IS AVAILABLE)	1
22	80011	KNOB, 3-PRONG W/ 3/8-16 THD.	1
23	10025	WASHER, FLAT 3/8	2
24	56018	BUSHING, RUBBER 1" O.D.x3/8" I.D.x1/4	1
25	10312	WASHER, FLAT 1/2	1
26	10031	SCREW, CAP 1/4-20x1	2
27	10015	NUT, LOCK 1/4-20	4
28	10602	WASHER, FLAT 1/4	6
29	10018	SCREW, CAP 1/4-20x3/4	2
30	10038	WASHER, LOCK 1/4	2
31	10602	WASHER, FLAT 1/4	2
32	40614	BRACKET, WATER PUMP	1
33	40624	WHEEL, WATER PUMP 2-1/8"	1
34	10161	SCREW, SET 1/4-28x5/16	1



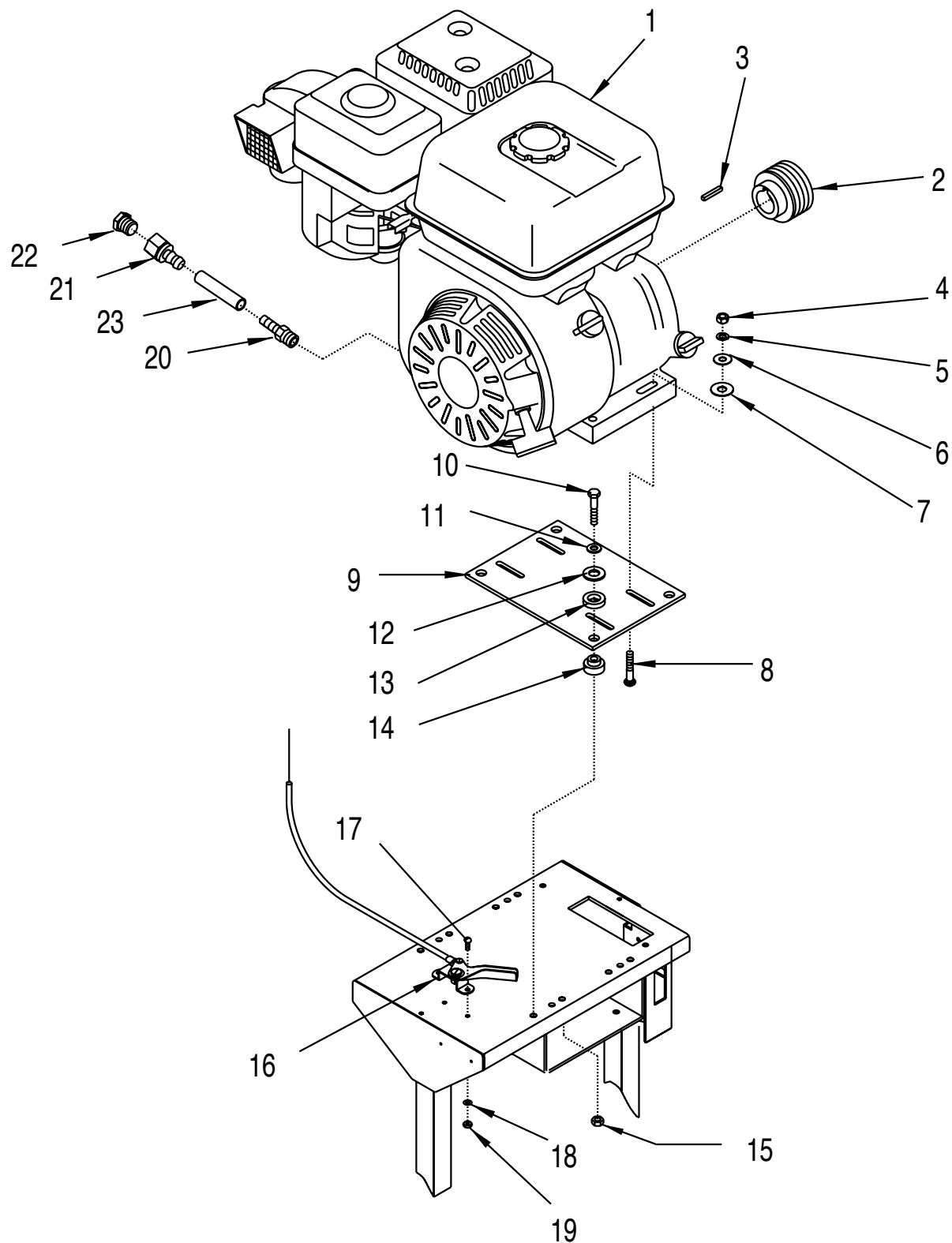
ILLUSTRATION # 5 : ENGINE GROUPING (5.5 & 6.5 HP HONDA)



PARTS LISTING - ILLUSTRATION 5 : ENGINE GROUPING (5.5 & 6.5 HP HONDA)			
ITEM#	PART#	DESCRIPTION	QTY.
1		ENGINE	1
	40387	HONDA 5.5HP GX160	
	15048	HONDA 6.5HP GX 200	
2	40648	SHEAVE 2.24"O.D.x10 GR.J x 3/4" BORE	1
3	10168	KEY 3/16" SQ.x2"L	1
4	10054	NUT 5/16-18	4
5	10801	WASHER, LOCK 5/16	4
6	10213	WASHER, FLAT 5/16	4
7	10342	BOLT, CARRIAGE 5/16-18x1-1/2	4
8	40628	MOUNT, ENGINE	1
9	10204	SCREW, CAP 5/16-18x1-3/4	4
10	10213	WASHER, FLAT 5/16	4
11	10312	WASHER, FLAT 1/2	4
12	79035	BUSHING, RUBBER 1-1/16"O.D.x5/8"I.D.	4
13	10225	BUSHING, RUBBER, GMS ENGINE MOUNT	4
14	40627	SPACER, ENGINE MOUNT	4
15	10807	NUT, LOCK 5/16-18	4
16	40388	CABLE, THROTTLE, LEVER-TYPE 24"	1
17	10830	SCREW, MACHINE 10-32x1/2	2
18	10831	WASHER, LOCK INT. TOOTH #10	2
19	10832	NUT 10-32	2
20	11541	BARB, PUSH-ON 3/8" HOSEx10MMx1.25 MALE THD.	1
21	11544	BARB, PUSH-ON 3/8" HOSEx 1/4 FPT	1
22	10776	PIPE PLUG 1/4 NPT (BRASS)	1
23	56116	HOSE, PUSH-ON 3/8"I.D.x3"L	1



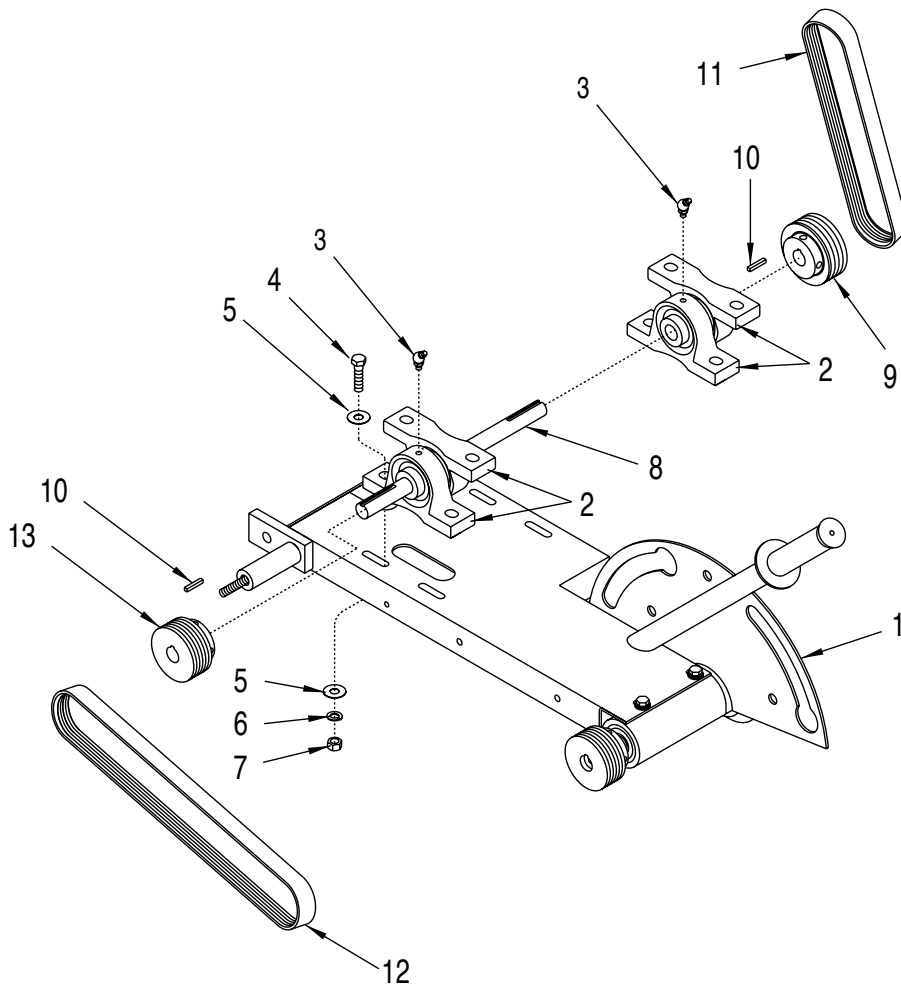
ILLUSTRATION # 6 : ENGINE GROUPING (9 HP HONDA)



PARTS LISTING - ILLUSTRATION 6 : ENGINE GROUPING (9 HP HONDA)			
ITEM#	PART#	DESCRIPTION	QTY.
1	15027	ENGINE, HONDA 9HP GX270	1
2	40652	SHEAVE 2.24" O.D. x 10 GR.J x 1" BORE	1
3	10168	KEY 3/16" SQ.x2"L	1
4	10054	NUT 5/16-18	4
5	10801	WASHER, LOCK 5/16	4
6	10213	WASHER, FLAT 5/16	4
7	10025	WASHER, FLAT 3/8	4
8	10918	BOLT, CARRIAGE 5/16-18x1-3/4	4
9	40318	MOUNT, ENGINE FOR 9HP HONDA	1
10	10204	SCREW, CAP 5/16-18x1-3/4	4
11	10213	WASHER, FLAT 5/16	4
12	10312	WASHER, FLAT 1/2	4
13	79035	BUSHING, RUBBER 1-1/16"O.D.x5/8"I.D.	4
14	10225	BUSHING, RUBBER, GMS ENGINE MOUNT	4
15	10807	NUT, LOCK 5/16-18	4
16	40388	CABLE, THROTTLE, LEVER-TYPE 24"	1
17	10830	SCREW, MACHINE 10-32x1/2	2
18	10831	WASHER, LOCK INT. TOOTH #10	2
19	10832	NUT 10-32	2
20	11542	BARB, PUSH-ON 3/8" HOSEx12MMx1.50 MALE THD.	1
21	11544	BARB, PUSH-ON 3/8" HOSEx 1/4 FPT	1
22	10776	PIPE PLUG 1/4 NPT (BRASS)	1
23	56116	HOSE, PUSH-ON 3/8"I.D.x3"L	1



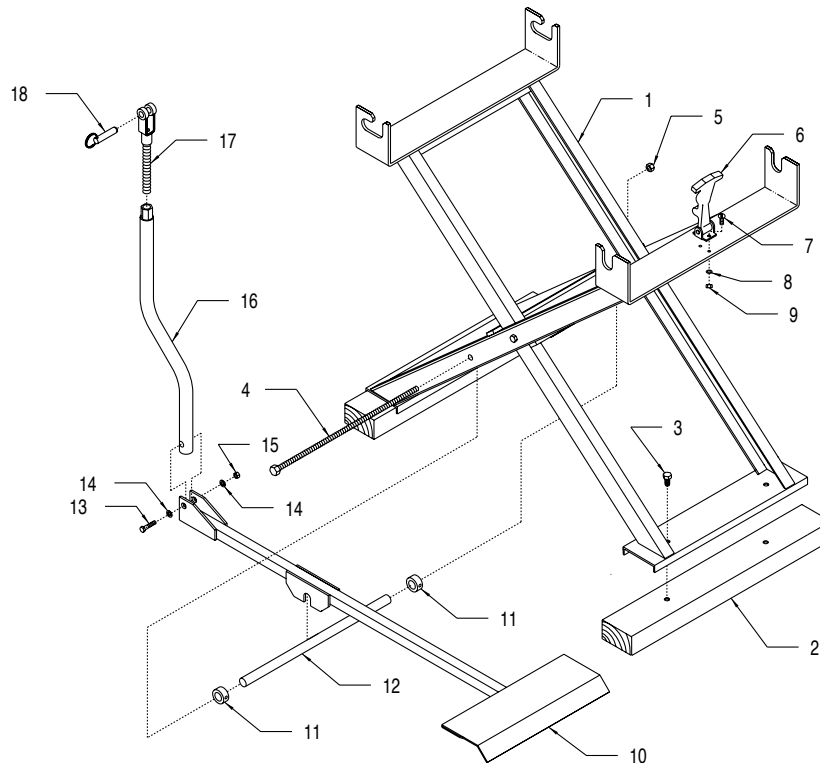
ILLUSTRATION # 7 : BELT & DRIVE SHAFT GROUPING



ITEM#	PART#	DESCRIPTION	QTY.
1	40606	DECK, ARBOR	1
2	40629	BEARING, BALL 3/4" BORE	4
3	10960	FITTING, GREASE 1/4-28x45°	4
4	10816	SCREW, CAP 3/8-24x1-1/2	8
5	10025	WASHER, FLAT 3/8	12
6	10811	WASHER, LOCK 3/8	8
7	10014	NUT 3/8-24	8
8	40618	SHAFT, JACK 3/4x13-1/2"L	1
9	40651	SHEAVE 3.0"OD X 10GR.J x 3/4" BORE	1
10	10060	KEY 3/16" SQ.x1-1/4"L	2
11		BELT	1
	40645	280J 10-GROOVE, 5.5 & 6.5 HP HONDA	
	40647	290J 10-GROOVE, 9 HP HONDA	
12	40646	BELT 380J 10-GROOVE	1
13	40649	SHEAVE 2.65"O.D.x10 GR.J x 3/4" BORE	1



**ILLUSTRATION # 8 : OPTIONAL STAND & FOOT PEDAL
ASSEMBLY GROUPING**



FOLDING STAND - PART #40631 (INCLUDES ITEMS 1 THRU 9)

FOOT PEDAL KIT - PART #40632 (INCLUDES ITEMS 10 THRU 18)

ITEM #	PART #	DESCRIPTION	QTY.
1	40631W	STAND ONLY	1
2	21801	SKID BOARD 2x4x24"L	2
3	10367	BOLT, LAG 3/8x1	4
4	40383	BOLT, ALLTHREAD ROD 1/2-13x17-1/2	1
5	10407	NUT, LOCK 1/2-13	1
6	52002	LATCH, FLEXIBLE DRAW w/ T-HANDLE	1
7	10830	SCREW, MACHINE 10-32x1/2	2
8	10831	WASHER, LOCK, INT. TOOTH #10	2
9	10832	NUT 10-32	2
10	40633	FOOT PEDAL	1
11	10428	COLLAR, LOCKING 3/4" I.D.	2
12	40634	FOOT PEDAL PIVOT TUBE	1
13	10029	SCREW, CAP 3/8-24x1-3/4	1
14	10025	WASHER, FLAT 3/8	2
15	10004	NUT, LOCK 3/8-24	1
16	40635	FOOT PEDAL LINKAGE	1
17	41019	LINKAGE, CLEVIS	1
18	10125	PIN, DETENT RING 1/2x 1-1/2	1

100 Thomas Johnson Drive, Frederick, MD 21702-4600 USA

Phone (301) 663-1600 • 1-800-638-3326

Fax (301) 663-1607 • 1-800-447-3326

Website: www.edcoinc.com • Email: sales@edcoinc.com

Printed in USA

©2002

Page 15



LIMITED EQUIPMENT WARRANTY

Equipment Development Company, Inc. herein referred to as EDCO warrants that each new unit manufactured by EDCO to be free from defects in material and workmanship in normal use and service for a period of (1) one year (except in the case of the cutter drum assembly on all model concrete asphalt planes, in which case the warranty period shall be 90 days) from date of shipment to the original retail or equipment rental center owner.

EDCO will, at its option, repair or replace, at the EDCO factory or at a point designated by EDCO any part, which shall appear to the satisfaction of EDCO inspection to have been defective in material or workmanship.

This warranty, does not apply to failure occurring as a result of abuse, misuse, negligent repairs, corrosion, erosion, normal wear and tear, alterations or modifications made to the product without express written consent of EDCO: or failure to follow the recommended operating practices and maintenance procedures as provided in the products operating and maintenance manuals.

This warranty does not obligate EDCO to bear any transportation charges in connection with the replacement or repair of defective parts. This warranty does not obligate EDCO to bear any expense for travel time or of personnel in connection with any service calls.

Accessories or equipment furnished and installed on the product by EDCO but manufactured by others, including but not limited to engines, motors, electrical equipment, transmissions, etc., shall carry the accessory manufacturers' own warranty.

THIS WARRANTY IS IN LIEU OF ALL OTHER WARRANTIES, EXPRESSED OR IMPLIED, OR STATUTORY, INCLUDING ANY WARRANTIES OF MERCHANTABILITY OR OF FITNESS FOR A PARTICULAR PURPOSE.

LIABILITY LIMITATIONS

The remedies of the user set forth under provisions of warranty outlined above are the exclusive and total liability of EDCO with the respect to their sale or the equipment and service furnished hereunder, in connection with the performance or breach thereof, or from the sale, delivery, installation, repair or technical direction covered by or furnished under the sale, whether based on contract, warranty, negligence, indemnity, strict liability, or otherwise shall not exceed the purchase price of the unit of equipment upon which such liability is based.

EDCO will not in any event be liable to the user, any successors in interest or any beneficiary or assignee relating to this sale for any consequential, incidental, indirect, special or punitive damages arising out of this sale or any breach thereof, or any defects on, or failure of, or malfunction of the equipment under this sale based upon loss of use, lost profits or revenue, interest, lost goodwill, work stoppage, impairment of other goods, loss by reason of shutdown or non-operation, increased expenses of operation of the equipment, cost of purchase or replacement power of claims of users or customers of the user for service interruption whether or not such loss or damage is based on contract, warranty, negligence, indemnity, strict liability, or otherwise.

EDCO reserves the right to modify, alter and improve any part or parts without incurring any obligation to replace any part or parts previously sold without such modified, altered or improved part or parts.

No person is authorized to give any other warranty or to assume any additional obligation on EDCO's behalf unless made in writing and signed by an officer of EDCO.

Equipment Development Company, Inc.

USE ONLY GENUINE EDCO PARTS AND ACCESSORIES

For your own safety, the safety of others and the life of your machine

