

REVISED STARTING  
SERIAL #081010001

# PARTS LIST MANUAL

## Models 4-EC & 4-GC



### FOUR-DISC CONCRETE FLOOR GRINDERS

| SKU #        | MODEL #         | POWER OPTION   |
|--------------|-----------------|--|
| 51500        | 4GC-11H         | HONDA GXV340 GASOLINE ENGINE W/ DUAL ELEMENT AIR CLEANER   |
| 54400        | 4GC-11P         | HONDA GXV340 PROPANE ENGINE W/ DUAL ELEMENT AIR CLEANER    |
| 53600        | 4EC-5B/230/1    | BALDOR ELECTRIC MOTOR 5HP 60Hz 230V 1-PHASE 19.5 F.L. AMPS |
| 52800-230    | 4EC-5B/230/3    | BALDOR ELECTRIC MOTOR 5HP 60Hz 230V 3-PHASE 12 F.L. AMPS   |
| 52800-460    | 4EC-5B/460/3    | BALDOR ELECTRIC MOTOR 5HP 60Hz 460V 3-PHASE 6 F.L. AMPS    |
| 52800-50/220 | 4EC-5B/50/220/3 | BALDOR ELECTRIC MOTOR 5HP 50Hz 220V 3-PHASE 13 F.L. AMPS   |
| 52800-50/380 | 4EC-5B/50/380/3 | BALDOR ELECTRIC MOTOR 5HP 50Hz 380V 3-PHASE 7.6 F.L. AMPS  |
| 52800-50/440 | 4EC-5B/50/440/3 | BALDOR ELECTRIC MOTOR 5HP 50Hz 440V 3-PHASE 6.5 F.L. AMPS  |

READ AND UNDERSTAND THE OPERATORS INSTRUCTION MANUAL THOROUGHLY BEFORE ATTEMPTING TO OPERATE THIS EQUIPMENT. Death or serious injury could occur if this machine is used improperly.



## SAFETY MESSAGES



The safety instructions are preceded by a graphic alert message of DANGER, WARNING, or CAUTION.



Indicates an imminent hazard which, if not avoided, will result in death or serious injury.



Indicates an imminent hazard which, if not avoided, can result in death or serious injury.



Indicates hazards which, if not avoided, could result in serious injury and or damage to the equipment.

## GASOLINE Powered Equipment



- Do not operate gasoline powered equipment without adequate ventilation. Carbon monoxide is an invisible, odorless gas that can kill.

## ELECTRICAL Powered Equipment



- ELECTRICAL HAZARD** - Be sure equipment is properly grounded. Failure to comply could kill or result in serious injury.



The engine exhaust from this product contains chemicals known to the State of California to cause cancer, birth defects or other reproductive harm.

## GENERAL INSTRUCTIONS



- You must read and understand the operators instruction manual and all other manuals associated with this machine. For your safety and the safety of others around you, it is extremely important to fully understand how to operate this machine in the way it was intended. Different model machines or older/newer versions of the same model may have different parts and controls that you need to understand. If instructions are not readable or available DO NOT USE this machine and contact the factory for a replacement Manual.
- You must be able to physically handle the bulk weight and power of this machine. If not properly controlled this machine can cause death or serious injury.
- Do not operate this machine in an impaired mental state. You must be able to exercise good judgement and reactions to maintain a safe working environment.
- This is a "one person" machine which means only one operator can be operating the machine at any one time. For the safety of others, maintain a safe operating distance to other personnel. Your work area should be defined and appropriately marked so bystanders and coworkers do not stand or walk near this machine and end up seriously injured by flying debris or exposing them to harmful noise or dust.
- This equipment is for Commercial use. Although this is a "one person" machine your work team should understand how to shut this machine off and quickly get medical help if an accident strikes the operator.
- Keep all guards in place during operation. The guards are to provide protection from inadvertent contact with dangerous moving parts, pinch points, or hot surfaces.
- Wear appropriate Personal Protective Equipment (PPE) including safety glasses, safety boots, work gloves, respiratory protection, hearing protection, and head protection. Do not wear loose clothing that can get tangled in moving parts. Failure to do so could result

in dismemberment or death. **Wear an approved respirator when removing hazardous materials or when grinding/cutting dry materials. Some dust particles such as concrete dust can contain silicate particles which can cause silicosis (a very serious lung disease). Contact NIOSH or OSHA for further details. When wet grinding/cutting, avoid contact with the concrete/asphalt slurry which can cause serious skin irritations.**

- You must maintain this machine per the maintenance schedule in the operator manual. Remember before adjusting, servicing, or fueling this machine, disconnect the source of power to the machine by disconnecting the spark plug (Gas models), or by unplugging the electrical power cord (electric models) or air hose (Pneumatic models) AT THE MACHINE so you can assure yourself it remains unplugged while you are working on it. Do not modify this machine. Use only genuine EDCO parts and accessories. Repairs and service should be performed by approved EDCO dealers or authorized technicians.
- You should look carefully around the area before you begin work so you can identify potential hazards such as deck inserts, pipes, columns, openings, electrical cords or outlets, or any other objects protruding from the slab surface.
- This machine has no brain so you must use your own. There is no substitute for safety. The safety decals on the machine are to serve as a reminder for information you must already know before you begin using this machine. Take a moment to reread the safety decals each time you use the machine. If your machine is missing any decals, contact the factory for a replacement.  
(EDCO 1-800-638-3326)

# PARTS LIST MANUAL

## MODEL 4-EC & 4-GC

### Table of Contents

| <u>Section</u>  | <u>Page Number</u> |
|---|--------------------|
| Safety Messages and General Instructions . . . . .                      | 2                  |
| How To Order Replacement Parts. . . . .                                 | 3                  |
| Illustration 1: Gear Case Assembly. . . . .                             | 4,5                |
| Illustration 2: Multi-Accessory Disc Assembly . . . . .                 | 6                  |
| Illustration 3: Multi-Accessory Disc Arrangement . . . . .              | 7                  |
| Illustration 4: Optional Surfacers Disc Assembly . . . . .              | 8                  |
| Illustration 5: Surfacers Disc Arrangement . . . . .                    | 9                  |
| Illustration 6: Handle and Fork Grouping . . . . .                      | 10, 11             |
| Illustration 7: Skirt Grouping . . . . .                                | 12                 |
| Illustration 8: Vacuum Port & Hose Grouping . . . . .                   | 13                 |
| Illustration 9: Engine & Belt Drive Grouping . . . . .                  | 14, 15             |
| Illustration 10: Optional Propane Grouping. . . . .                     | 16, 17             |
| Illustration 11: Motor & Belt Drive Grouping. . . . .                   | 18, 19             |
| Illustration 12: Hood, Optional Weight Tray and Weight Blocks . . . . . | 20                 |
| Illustration 13: Dyma-Sert Accessory . . . . .                          | 21                 |
| Illustration 14: Strip-Sert Accessory . . . . .                         | 22                 |
| Illustration 15: Scarifier Accessory . . . . .                          | 23                 |
| Illustration 16: Other Accessories . . . . .                            | 23                 |
| Illustration 17: Optional Pad Driver Disc Assembly . . . . .            | 24                 |
| Wiring Diagrams . . . . .   | 25, 26, 27         |
| Notes / Repairs . . . . .   | 27                 |
| Limited Equipment Warranty of Sale - Terms & Conditions. . . . .        | 28 Back Page       |

#### HOW TO ORDER REPLACEMENT PARTS

- ☐ To insure product safety and reliability, always use genuine EDCO replacement parts when making repairs to the equipment.
- ☐ When calling for parts, specify the MODEL and SERIAL number of the machine, which can be found on the NAME PLATE. Keep that information in the space provided. In addition to this information, give part number, description, and quantity as listed on the parts list to your parts representative.
- ☐ Please note: Due to improvements and changes in the equipment, the illustrations shown may be different than the actual machine.

#### FILL IN INFORMATION BELOW

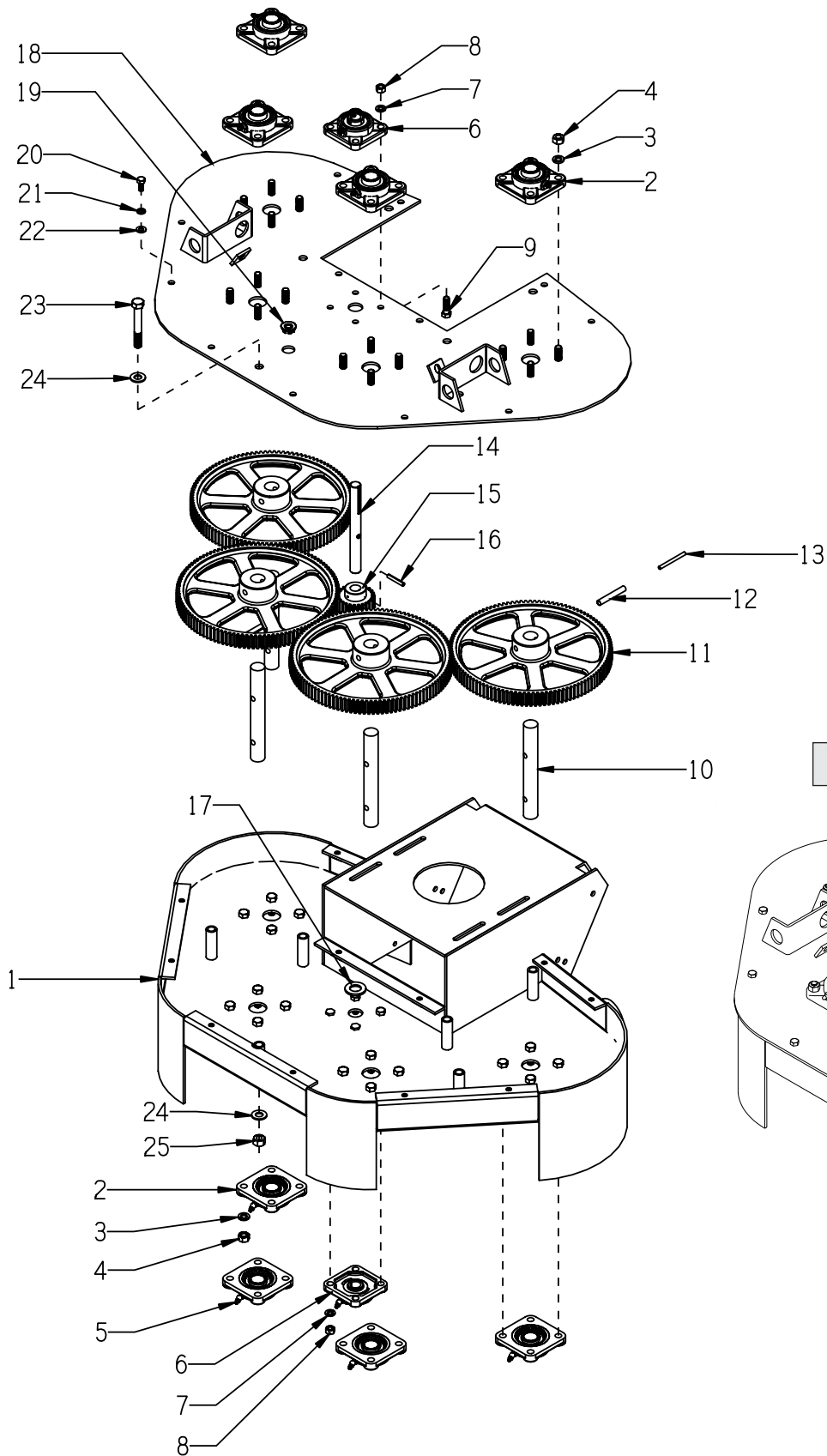
Date of Purchase \_\_\_\_\_

Model # \_\_\_\_\_

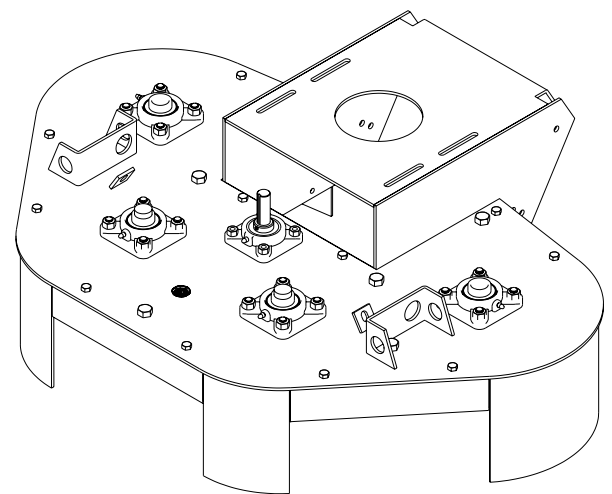
Serial # \_\_\_\_\_

SKU # \_\_\_\_\_

# ILLUSTRATION 1 : GEAR CASE ASSEMBLY

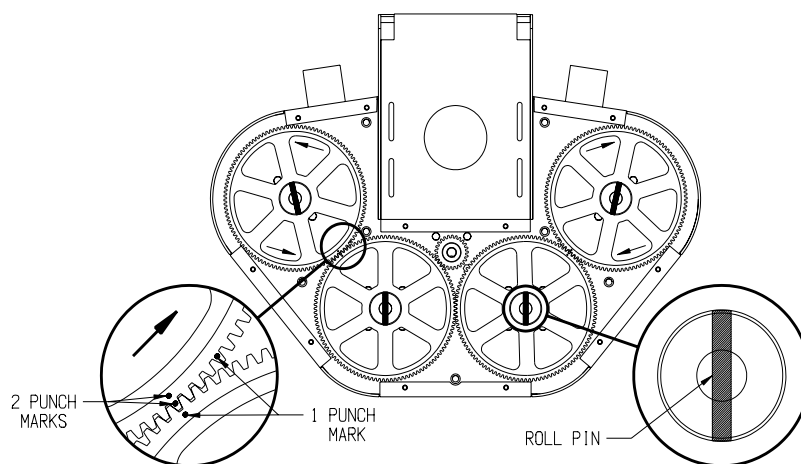


## GEAR CASE ASSEMBLED



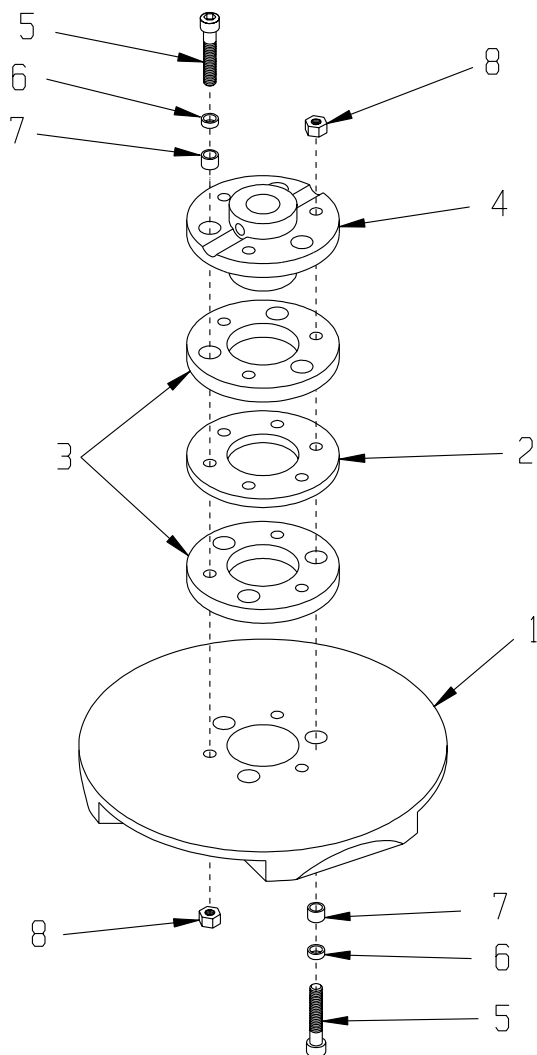
| PARTS LISTING - ILLUSTRATION 1 : GEAR CASE ASSEMBLY |        |                                     |      |
|---|--------|-------------------------------------|------|
| ITEM #  | PART # | DESCRIPTION                         | QTY. |
| 1   | 75030  | MAIN FRAME                          | 1    |
| 2   | 77008  | BEARING, BALL 1" 4-HOLE FLANGE, ND  | 8    |
| 3   | 10450  | WASHER, LOCK 7/16                   | 32   |
| 4   | 10481  | NUT 7/16-20                         | 32   |
| 5   | 10960  | FITTING, GREASE 1/4-28 X 45°        | 5    |
| 6   | 77009  | BEARING, BALL 3/4" 4-HOLE FLANGE    | 2    |
| 7   | 10811  | WASHER, LOCK 3/8                    | 8    |
| 8   | 10014  | NUT 3/8-24                          | 8    |
| 9   | 10309  | SCREW, CAP 3/8-24 X 1-1/4           | 4    |
| 10  | 77013  | SHAFT, LARGE GEAR 1"DIA X 7-13/16"L | 4    |
| 11  | 77012  | GEAR, SPUR 112 TOOTH (DRIVEN)       | 4    |
| 12  | 10007  | PIN, ROLL 3/8 X 2-1/2               | 4    |
| 13  | 63055  | PIN, ROLL 7/32 X 2-1/2              | 4    |
| 14  | 77011  | SHAFT, PINION GEAR 3/4DIA X 7-3/8"L | 1    |
| 15  | 77053  | GEAR, SPUR 25 TOOTH (PINION)        | 1    |
| 16  | 10037  | PIN, ROLL 1/4 X 1-1/2               | 1    |
| 17  | 10009  | WASHER, FLAT 3/4 SAE                | 1    |
| 18  | 75031  | COVER, GEAR CASE                    | 1    |
| 19  | 10005  | PLUG, HOLE 7/8" (CHROME)            | 1    |
| 20  | 10806  | SCREW, CAP 5/16-18 X 1              | 12   |
| 21  | 10801  | WASHER, LOCK 5/16                   | 12   |
| 22  | 10213  | WASHER, FLAT 5/16 SAE               | 12   |
| 23  | 10324  | SCREW, CAP 1/2-13 X 3-1/2           | 7    |
| 24  | 10312  | WASHER, FLAT 1/2 SAE                | 14   |
| 25  | 10155  | NUT, HEX NYLON LOCK 1/2-13          | 7    |

### GEAR ALIGNMENT



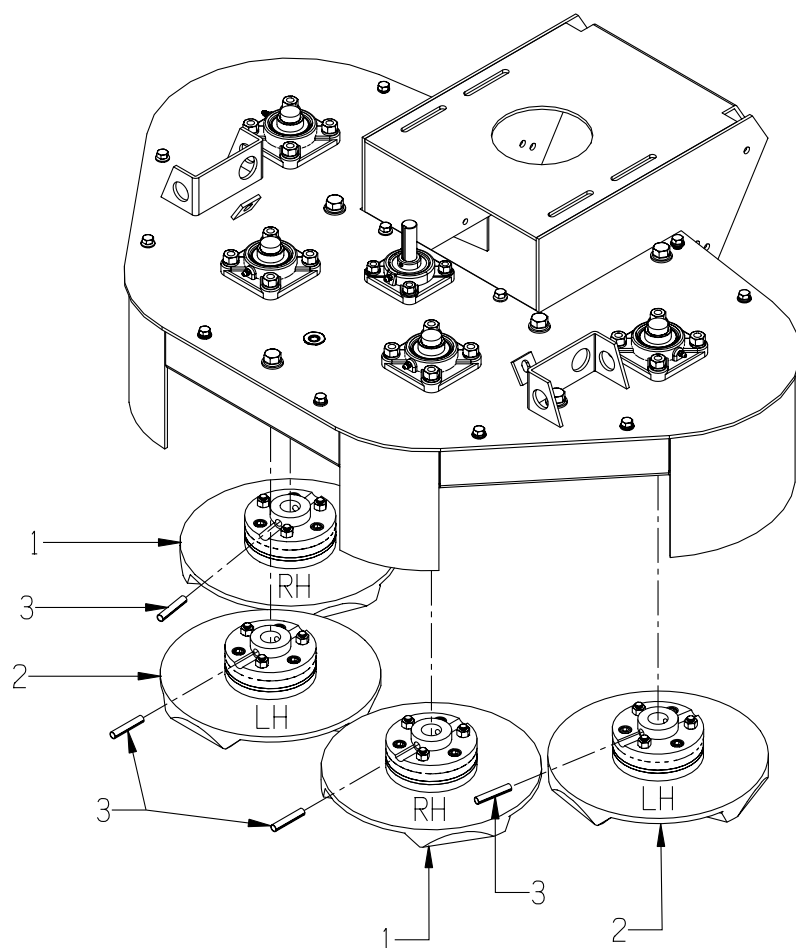
#### ALIGNMENT PROCEDURE:

1. POSITION THE 4 LARGE GEARS SO THE ROLL PINS POINT STRAIGHT FROM THE FRONT TO THE REAR.
2. MARK THE GEARS WITH 1 PUNCH MARK WHERE THEY MEET WITH EACH OTHER.
3. COUNT 4 TEETH TOWARDS THE OUTER SIDE OF THE REAR GEARS AND MARK WITH 2 PUNCH MARKS.
4. ROTATE THE GEARS INWARD SO THE 2 PUNCH MARKS ALIGN WITH THE 1 PUNCH MARK ON THE FRONT GEARS.

**ILLUSTRATION 2 : MULTI-ACCESSORY DISC ASSEMBLY**


| ITEM #   | PART #         | DESCRIPTION   | * QTY. |
|--|----------------|---|--------|
|  | 8888           | DISC ASSEMBLY COMPLETE, RIGHT-HAND (ITEMS 1 THRU 8)                           | 2      |
|  | 9999           | DISC ASSEMBLY COMPLETE, LEFT-HAND (ITEMS 1 THRU 8)                            | 2      |
| 1  | 77088<br>77099 | MULTI-ACCESSORY DISC ONLY<br>R.H. FOR 8888 ASSEMBLY<br>L.H. FOR 9999 ASSEMBLY | 1<br>1 |
| 2  | 77020          | RING, HUB CARRIER, 6-HOLE   | 1      |
| 3  | 10112          | RING, NEOPRENE, 4-1/2"OD X 1/2"THK  | 2      |
| 4  | 77010          | HUB, ALUMINUM 6-HOLE (GRINDER)  | 1      |
| 5  | 10114          | SCREW, SKT. HD. CAP 3/8-24 X 2-1/4  | 6      |
| 6  | 10113          | SPACER, STEEL 9/16OD X 3/8ID X 7/32"  | 6      |
| 7  | 10011          | SPACER, STEEL 5/8OD X 3/8ID X 3/8"  | 6      |
| 8  | 10058          | NUT, LOCK 3/8-24 W/ NYLON PATCH   | 6      |
| *QUANTITIES FOR ITEMS 1 THRU 8 ARE PER EACH DISC ASSEMBLY<br>2 RIGHT-HAND & 2 LEFT HAND DISC REQUIRED PER 4-DISC GRINDER |                |   |        |

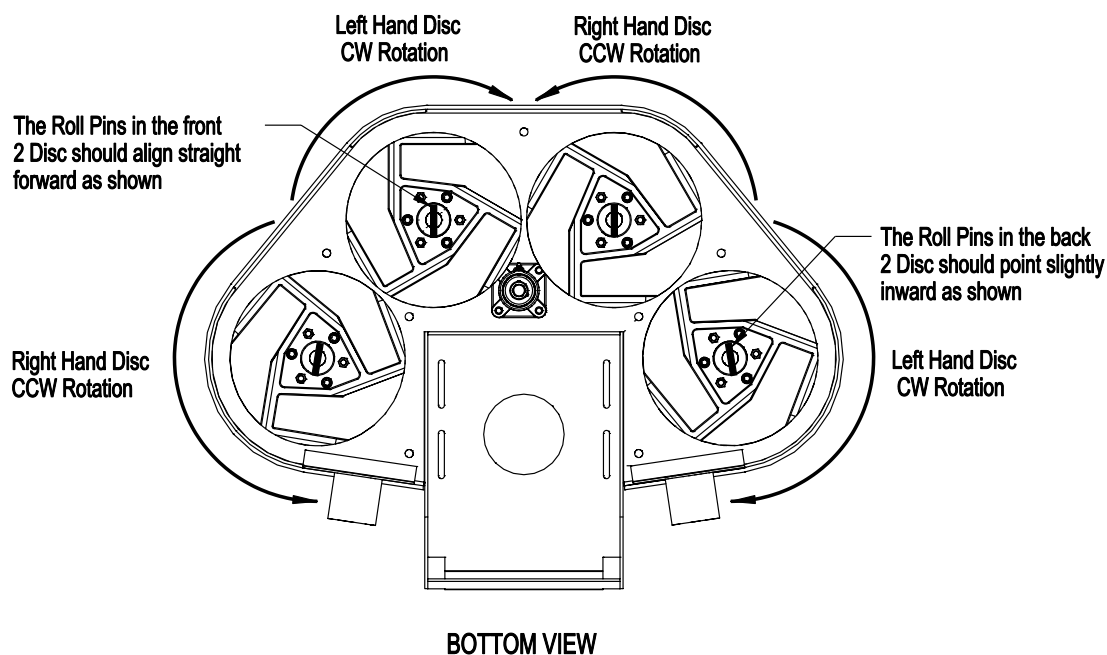




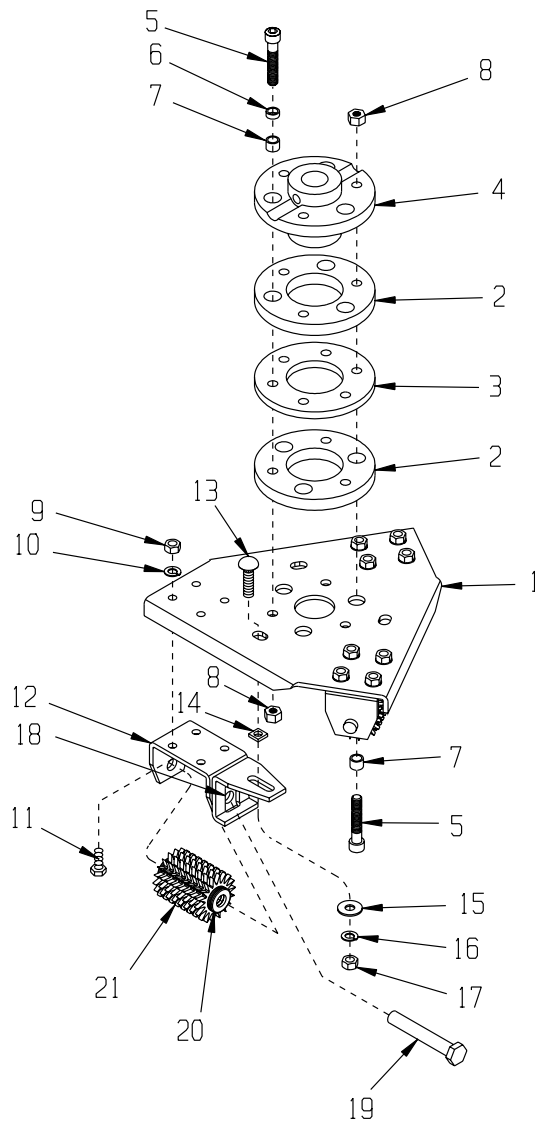
**ILLUSTRATION 3 :  
MULTI-ACCESSORY DISC ARRANGEMENT**

| ITEM# | PART# | DESCRIPTION                   | QTY. |
|-------|-------|-------------------------------|------|
| 1     | 8888  | MULTI-ACCY. DISC ASSEMBLY, RH | 2    |
| 2     | 9999  | MULTI-ACCY. DISC ASSEMBLY, LH | 2    |
| 3     | 10063 | PIN, ROLL 3/8 X 2             | 4    |

**INSTALL THE DISC IN THE ORIENTATION AS SHOWN BELOW**

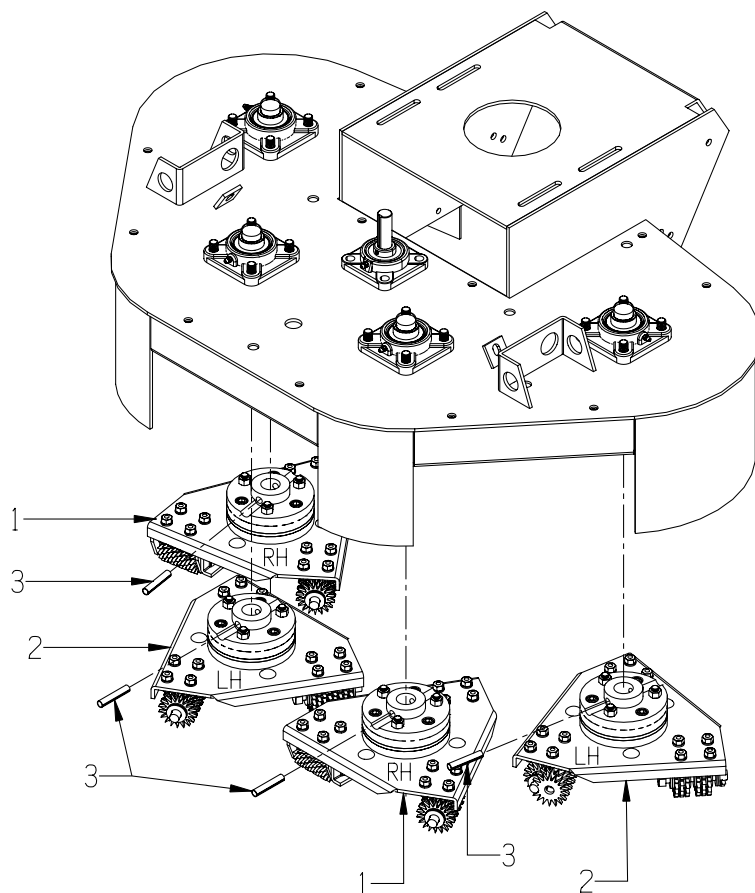


#### ILLUSTRATION 4 : OPTIONAL SURFACER DISC ASSEMBLY



| ITEM # | PART #         | DESCRIPTION   | *QTY.  | ITEM #   | PART #         | DESCRIPTION   | *QTY.    |
|--------|----------------|---|--------|--|----------------|---|----------|
|        | 2222<br>2222C  | DISC ASSEMBLY COMPLETE, R.H.<br>W/ STEEL CUTTERS.<br>W/ CARBIDE CUTTERS | 2      | 10   | 10801          | WASHER, LOCK 5/16   | 12       |
|        |                |   |        | 11   | 10048          | SCREW, CAP 5/16-24 X 3/4                                  | 12       |
|        | 3333<br>3333C  | DISC ASSEMBLY COMPLETE, L.H.<br>W/ STEEL CUTTERS<br>W/ CARBIDE CUTTERS  | 2      | 12   | 77074          | HOLDER, CUTTER SHAFT                                      | 3        |
|        |                |   |        | 13   | 10802          | BOLT, CARRIAGE 3/8-16 X 1                                 | 3        |
| 1      | 77122<br>77133 | DISC ONLY, SURFACER<br>RIGHT HAND DISC<br>LEFT HAND DISC                | 2<br>2 | 14   | 10089          | CLIP, SPEED NUT 3/8                                       | 3        |
| 2      | 10112          | RING, NEOPRENE 4-1/2"OD X 1/2"THK                                       | 2      | 15   | 10025          | WASHER, FLAT 3/8 SAE                                      | 3        |
| 3      | 77020          | RING, HUB CARRIER, 6-HOLE   | 1      | 16   | 10811          | WASHER, LOCK 3/8  | 3        |
| 4      | 77010T         | HUB, CAST IRON, 6-HOLE  | 1      | 17   | 10404          | NUT 3/8-16  | 3        |
| 5      | 10114          | SCREW, SKT. HD. CAP 3/8-24 X 2-1/4                                      | 6      | 18   | 77075          | RETAINER, CUTTER SHAFT                                    | 3        |
| 6      | 10113          | SPACER, STL. 9/16OD X 3/8ID X 7/32                                      | 3      | 19   | 77048          | CG226 CUTTER SHAFT 1/2 X 3-1/4                            | 3        |
| 7      | 10011          | SPACER, STL. 5/8OD X 3/8ID X 3/8  | 6      | 20   | 12230          | CG227 SPACER 1/2"ID                                       | 33       |
| 8      | 10058          | NUT, LOCK 3/8-24 W/ NYLON PATCH   | 6      | 21   |                | CUTTERWHEEL   |          |
| 9      | 10054          | NUT 5/16-18   | 12     |  | 12206<br>20156 | JRS501P 2" POINTED STEEL<br>CP206T 1-3/4" 6-POINT CARBIDE | 24<br>18 |
|        |                |   |        | *QUANTITIES FOR ITEMS 2 THRU 21 ARE PER EACH DISC ASSEMBLY<br>2 RIGHT-HAND & 2 LEFT HAND DISC REQD. PER 4-DISC GRINDER |                |   |          |

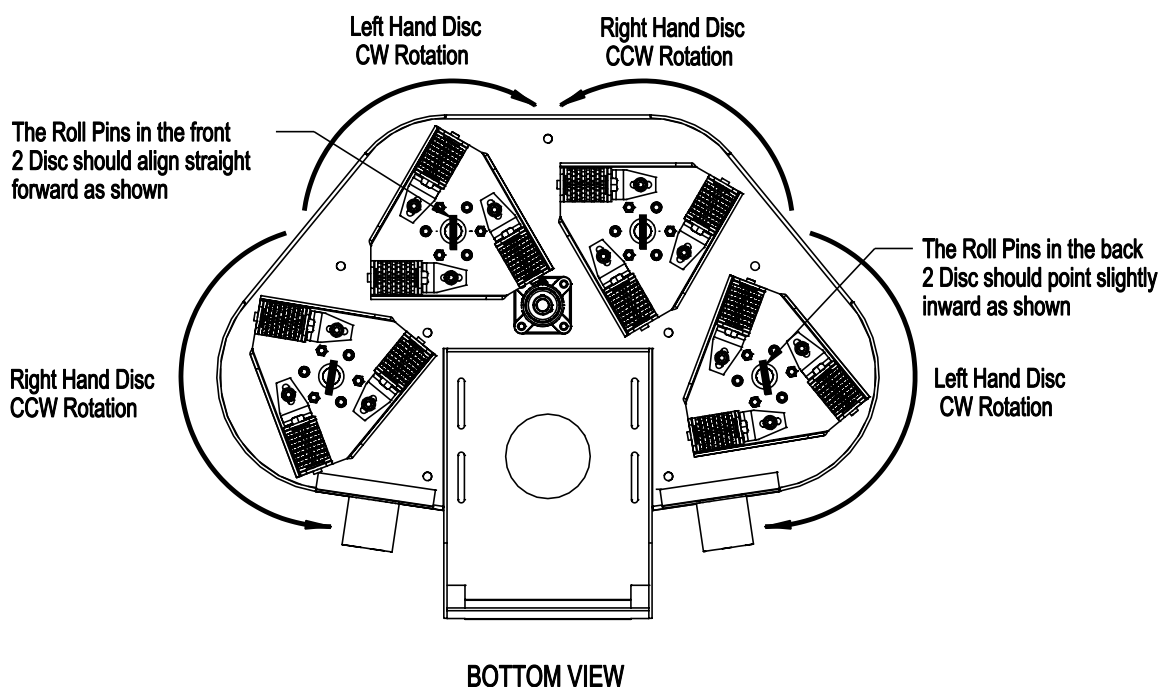


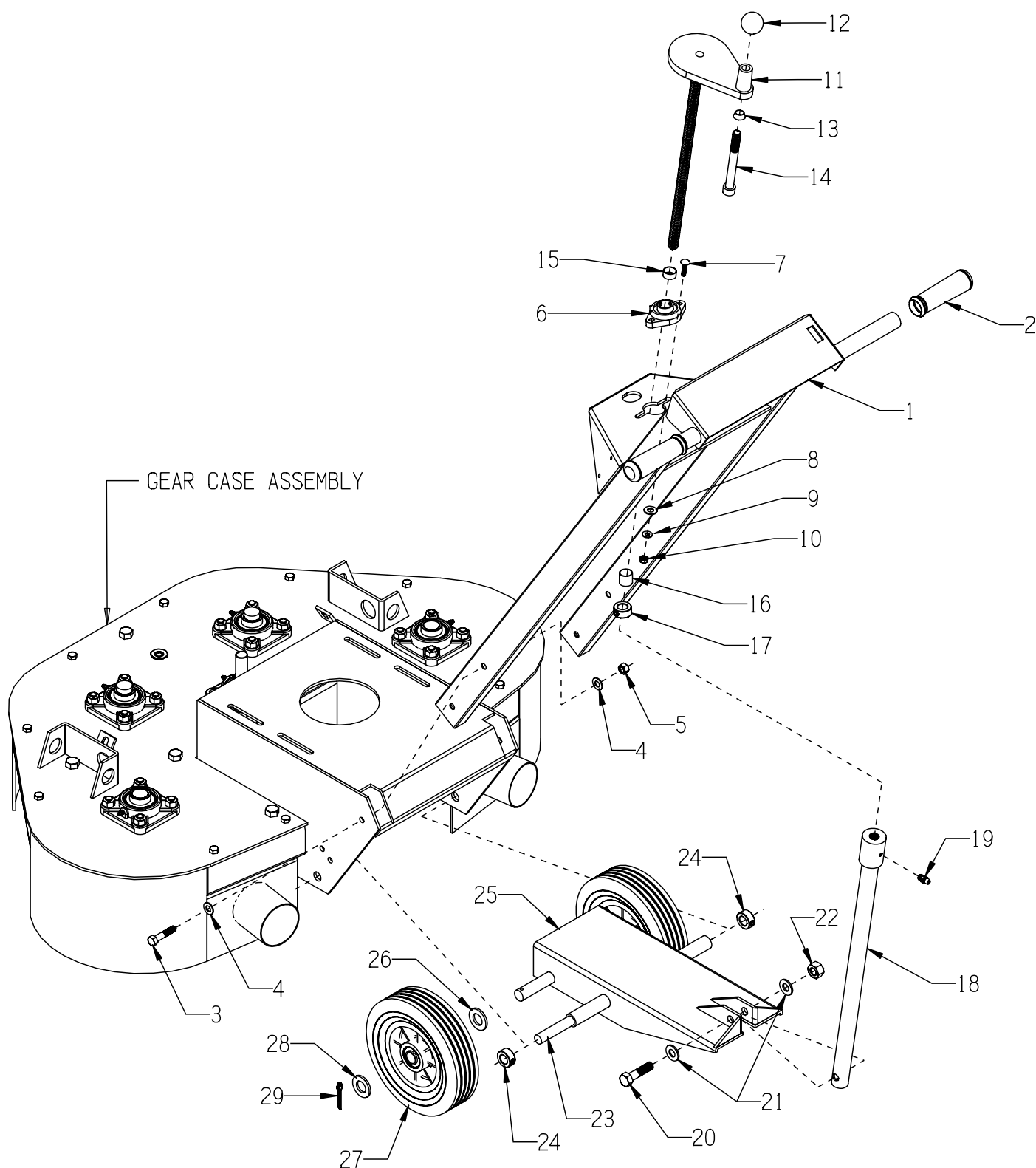


**ILLUSTRATION 5 :  
OPTIONAL  
SURFACER DISC ARRANGEMENT**

| ITEM#  | PART# | DESCRIPTION                | QTY. |
|--|-------|----------------------------|------|
| 1  | *2222 | SURFACER DISC ASSEMBLY, RH | 2    |
| 2  | *3333 | SURFACER DISC ASSEMBLY, LH | 2    |
| 3  | 10063 | PIN, ROLL 3/8 X 2          | 4    |
| * THESE PART NUMBERS ARE FOR THE ASSEMBLIES WITH STEEL CUTTERS. USE PART NUMBER 2222C AND 3333C FOR THE DISC WITH CARBIDE CUTTERS. |       |                            |      |

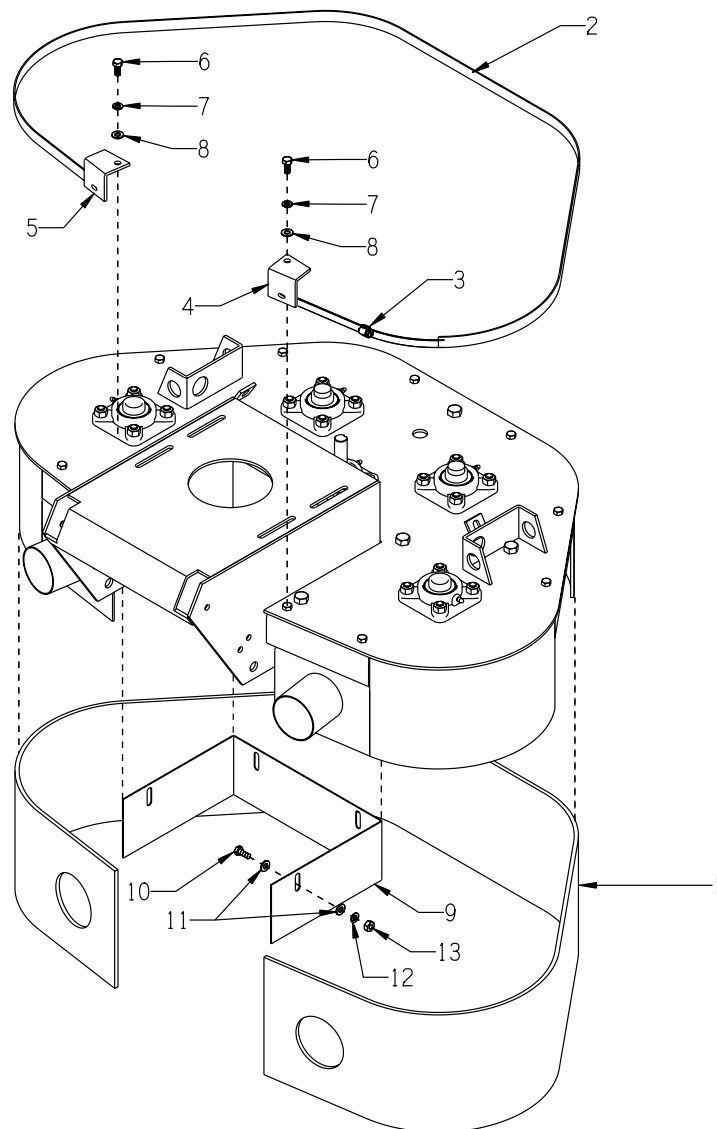
**INSTALL THE DISC IN THE ORIENTATION AS SHOWN BELOW**



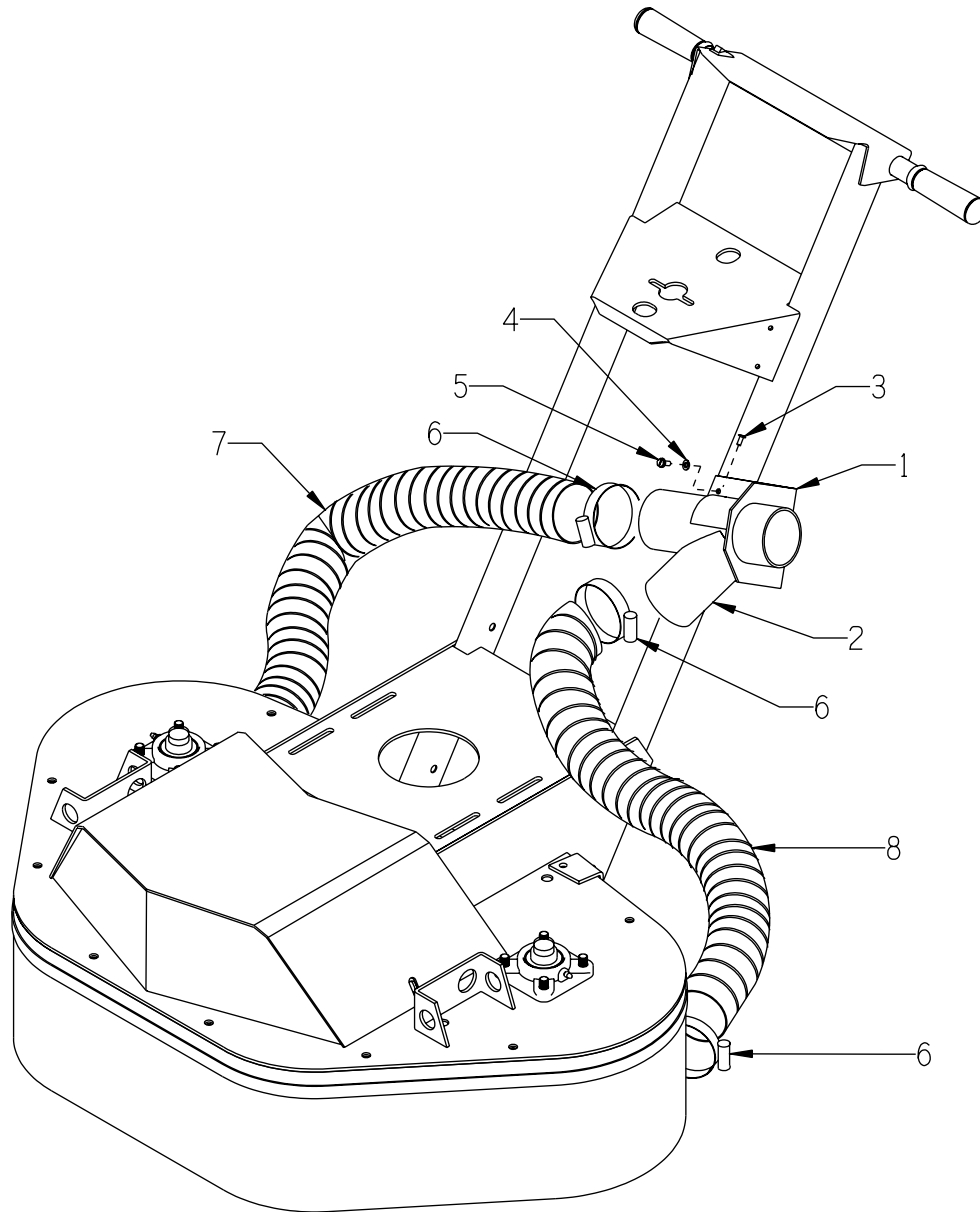
**ILLUSTRATION 6: HANDLE AND FORK GROUPING**


**PARTS LISTING - ILLUSTRATION 6 : HANDLE AND FORK GROUPING**

| ITEM # | PART # | DESCRIPTION                            | QTY. |
|--------|--------|--|------|
| 1      | 75005  | HANDLE BAR                             | 1    |
| 2      | 10608  | GRIP, HAND 1" MODEL AT                 | 2    |
| 3      | 10029  | SCREW, CAP 3/8-24 X 1-3/4              | 4    |
| 4      | 10025  | WASHER, FLAT 3/8 SAE                   | 8    |
| 5      | 10004  | NUT, LOCK 3/8-24                       | 8    |
| 6      | 80009  | BEARING, BALL 5/8" 2-HOLE (NO G.F.)    | 1    |
| 7      | 10412  | BOLT, CARRIAGE 1/4-20 X 1              | 2    |
| 8      | 10213  | WASHER, FLAT 5/16 SAE                  | 2    |
| 9      | 10602  | WASHER, FLAT 1/4 SAE                   | 2    |
| 10     | 10861  | NUT, KEPS 1/4-20                       | 2    |
| 11     | 75004  | HANDWHEEL, LARGE W/ 5/8-8 X 16" ROD    | 1    |
| 12     | 14023  | KNOB, BALL 1-3/8 W/ 1/2-13THD, BLK.    | 1    |
| 13     | 50550  | SLEEVE FOR 1/2" CAPSCREW, TAPERED      | 1    |
| 14     | 10346  | SCREW, SKT. HD. CAP 1/2-13 X 4-1/2     | 1    |
| 15     | 75012  | SPACER, HANDWHEEL 5/8" ID X 3/8" L     | 1    |
| 16     | 55010  | SPACER, HANDWHEEL 5/8" ID X 3/4" L     | 1    |
| 17     | 10096  | COLLAR, LOCKING 5/8"                   | 1    |
| 18     | 75006  | LINKAGE, CUT CONTROL LOWER             | 1    |
| 19     | 10808  | FITTING, GREASE 1/4-28 STRAIGHT        | 1    |
| 20     | 10322  | SCREW, CAP 1/2-20 X 2                  | 1    |
| 21     | 10312  | WASHER, FLAT 1/2 SAE                   | 2    |
| 22     | 10205  | NUT, LOCK 1/2-20                       | 1    |
| 23     | 75032  | SHAFT, FORK PIVOT 5/8 X 13-3/4         | 1    |
| 24     | 10096  | COLLAR, LOCKING 5/8"                   | 2    |
| 25     | 75007  | FORK                                   | 1    |
| 26     | 10009  | WASHER, FLAT 3/4 SAE                   | 2    |
| 27     | 79013  | WHEEL 8 X 2-1/2 X 3/4" BRG             | 2    |
| 28     | 11597  | WASHER .755" ID X 1.25" OD X .060" THK | 2    |
| 29     | 10306  | PIN, COTTER 3/16 X 1-1/2               | 2    |

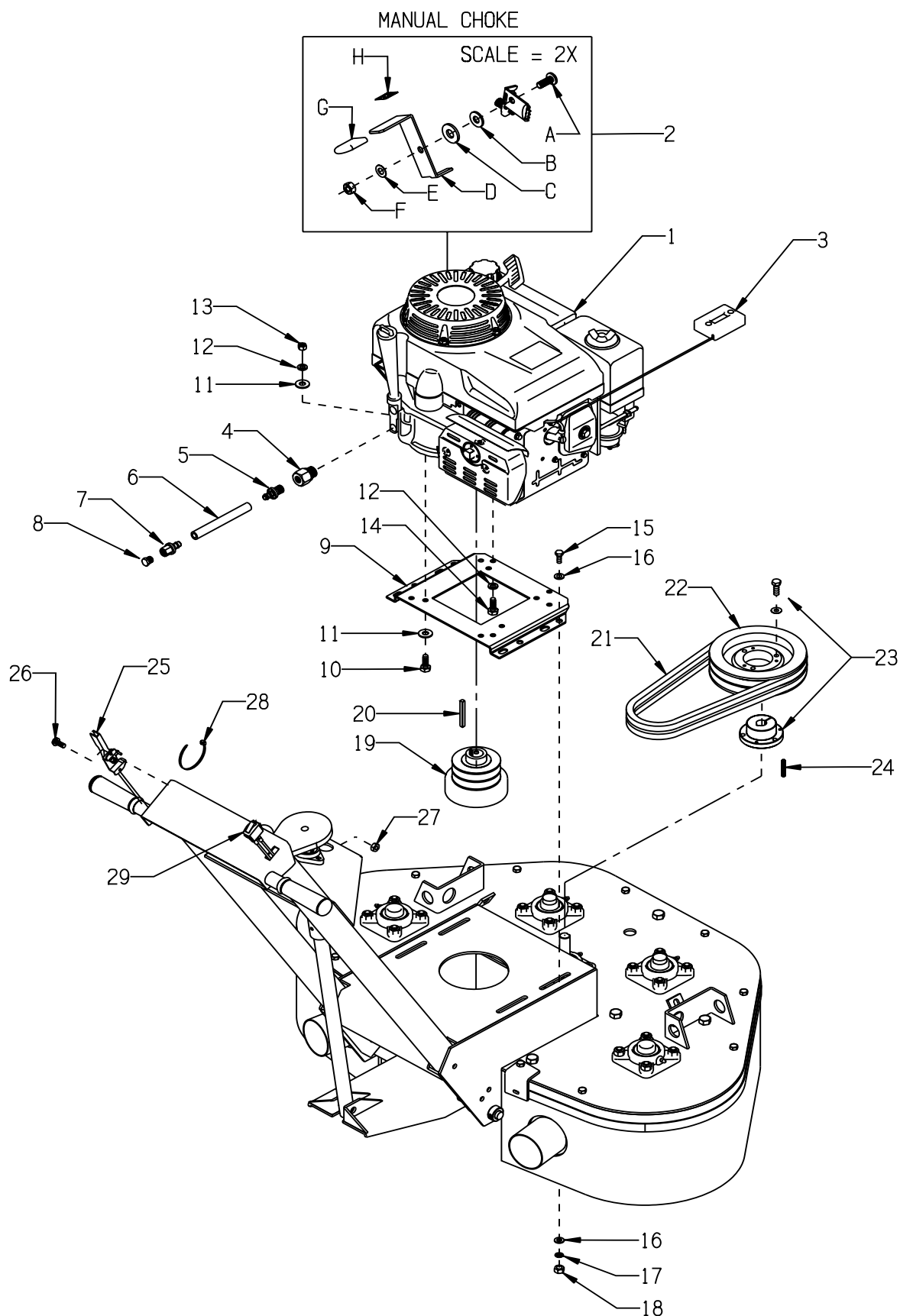
**ILLUSTRATION 7: SKIRT GROUPING**

| ITEM # | PART # | DESCRIPTION                 | QTY. |
|--------|--------|-----------------------------|------|
| 1      | 75033  | RUBBER SKIRT 8-1/2 x 90-1/2 | 1    |
| 2      | 75122  | BAND 76", FRONT             | 1    |
| 3      | 75144  | CLAMP, MODIFIED SAE#200     | 1    |
| 4      | 75121  | BRACKET, SKIRT RIGHT BAND   | 1    |
| 5      | 75120  | BRACKET, SKIRT LEFT BAND    | 1    |
| 6      | 10806  | SCREW, CAP 5/16-18 X 1      | 2    |
| 7      | 10801  | WASHER, LOCK 5/16           | 2    |
| 8      | 10213  | WASHER, FLAT 5/16 SAE       | 2    |
| 9      | 75011  | PANEL, CENTER SKIRT         | 1    |
| 10     | 10053  | SCREW, CAP 5/16-18 X 3/4    | 4    |
| 11     | 10213  | WASHER, FLAT 5/16 SAE       | 8    |
| 12     | 10801  | WASHER, LOCK 5/16           | 4    |
| 13     | 10054  | NUT 5/16-18                 | 4    |

**ILLUSTRATION 8 : VACUUM PORT & HOSE GROUPING**


| ITEM # | PART # | DESCRIPTION                         | QTY. |
|--------|--------|-------------------------------------|------|
| 1      | 75017  | MOUNT BRKT., Y-FITTING              | 1    |
| 2      | 75018  | FITTING, 3" Y                       | 1    |
| 3      | 12113  | RIVET, BLIND 3/16 X .440"L X .375HD | 2    |
| 4      | 10038  | WASHER, LOCK 1/4 SAE                | 2    |
| 5      | 10846  | SCREW, CAP STSHW 1/4-20 X 1/2       | 2    |
| 6      | 10849  | CLAMP, HOSE, SAE #52, ADJ. TO 3-3/4 | 4    |
| 7      | 75023  | HOSE, FLEX 3"ID X 24"L              | 1    |
| 8      | 75022  | HOSE, FLEX 3"ID X 36"L              | 1    |

# ILLUSTRATION 9: ENGINE & BELT DRIVE GROUPING

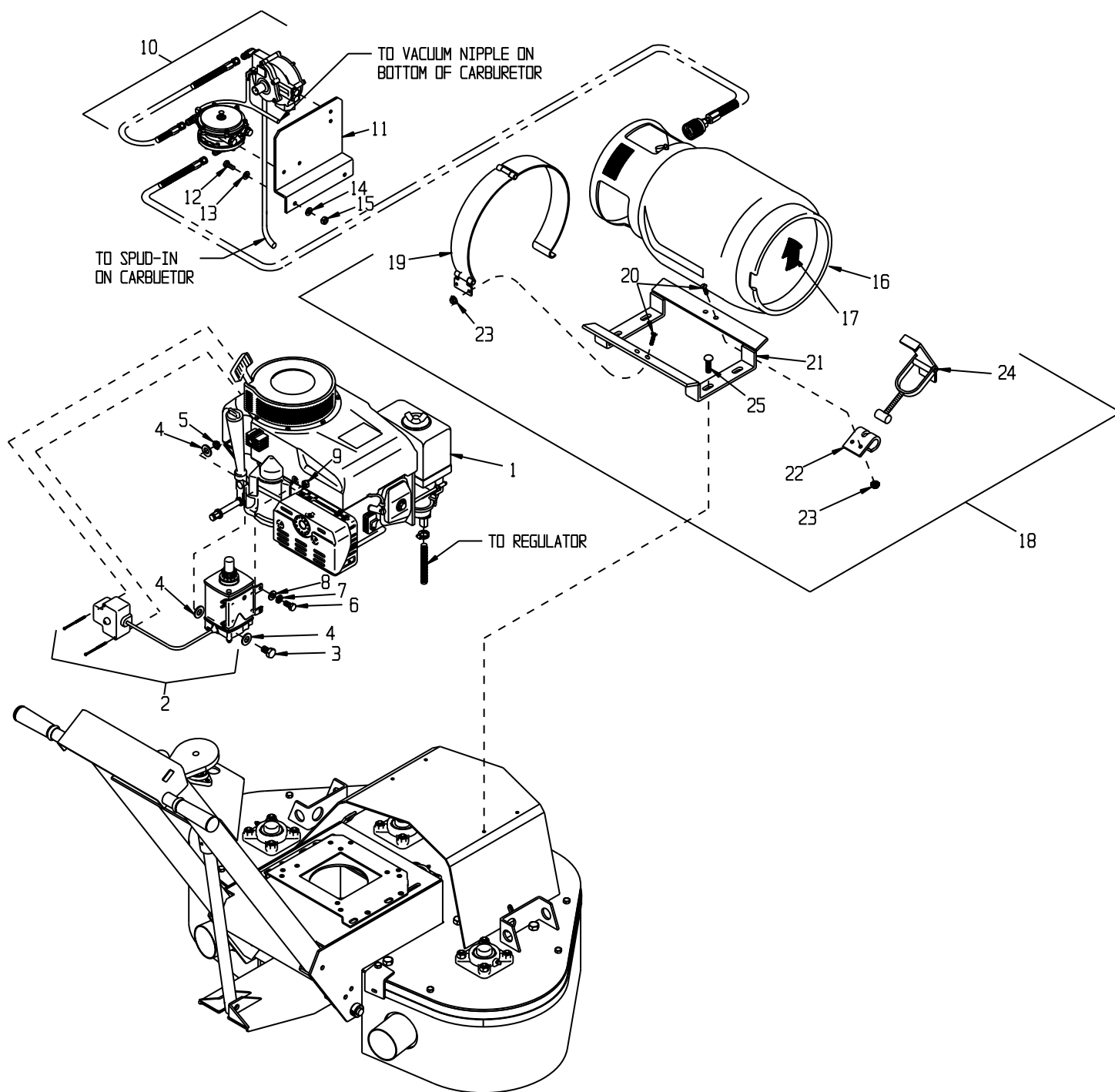




**PARTS LISTING - ILLUSTRATION 9 : ENGINE & BELT DRIVE GROUPING**

| ITEM # | PART # | DESCRIPTION   | QTY. |
|--------|--------|---|------|
| 1      | 76004  | ENGINE, HONDA GXV340UT2-DX3<br>WITH STANDARD DUAL ELEMENT AIR CLEANER | 1    |
| 2      | 15190  | MANUAL CHOKE KIT FOR HONDA GXV340                                     | 1    |
| 2-A    | 15185  | SCREW, MACHINE M6 X 16MM PHILLIP HD                                   | 1    |
| 2-B    | 15188  | WASHER .265"ID,.50"OD,.029-.035"THK                                   | 1    |
| 2-C    | 15187  | WASHER, FIBER .75 X .25 X .093  | 1    |
| 2-D    | 15183  | LEVER, CHOKE CONTROL, GXV340  | 1    |
| 2-E    | 15186  | WASHER, BELLEVILLE .500 X.255 X.018                                   | 1    |
| 2-F    | 28026  | NUT, HEX NYLON LOCK M6 X 1MM  | 1    |
| 2-G    | 15184  | CAP, FLAT RED .062 X .75 X 1  | 1    |
| 2-H    | 91301  | DECAL, CHOKE 5/8 X 5/8  | 1    |
| 3      | 15138  | METER, HOUR, REDINGTON INDUCTIVE (OPTIONAL)                           | 1    |
| 4      | 11689  | ADAPTER, 20MM X 1.5 TO 1/4FPT   | 1    |
| 5      | 10657  | BARB, PUSH-ON 3/8HOSE X 1/4MPT  | 1    |
| 6      | 52121  | HOSE, PUSH-ON 3/8"ID X 5-1/2"L  | 1    |
| 7      | 11544  | BARB, PUSH-ON 3/8 HOSE X 1/4FPT                                       | 1    |
| 8      | 10776  | PIPE PLUG 1/4 NPT (BRASS)   | 1    |
| 9      | 76023A | MOUNT, ENGINE   | 1    |
| 10     | 10342  | SCREW, CAP 5/16-18 X 1-1/2  | 2    |
| 11     | 10213  | WASHER, FLAT 5/16 SAE   | 4    |
| 12     | 10801  | WASHER, LOCK 5/16   | 4    |
| 13     | 10054  | NUT 5/16-18   | 2    |
| 14     | 10048  | SCREW, CAP 5/16-24 X 3/4  | 2    |
| 15     | 10021  | SCREW, CAP 3/8-24 X 1   | 4    |
| 16     | 10025  | WASHER, FLAT 3/8 SAE  | 8    |
| 17     | 10811  | WASHER, LOCK 3/8  | 4    |
| 18     | 10014  | NUT 3/8-24  | 4    |
| 19     | 76024  | CLUTCH, CENTRIFUGAL 3.5 X 2GR X 1                                     | 1    |
| 20     | -----  | KEY 1/4"SQ. (INCLUDED W/ ENGINE)                                      | 1    |
| 21     | 80025  | BELT BX-32 COG  | 2    |
| 22     | 75010  | SHEAVE 6.9"OD X 2GR.B X SDS   | 1    |
| 23     | 10036  | BUSHING, SHEAVE SDS X 3/4"BORE  | 1    |
| 24     | 10016  | KEY 3/16SQ X 1-1/2  | 1    |
| 25     | 3611   | CABLE, THROTTLE, LEVER-TYPE 54"                                       | 1    |
| 26     | 10830  | SCREW, MACHINE 10-32 X 1/2  | 2    |
| 27     | 10832  | NUT, KEPS 10-32   | 2    |
| 28     | 10982  | TIE, CABLE, BLACK NYLON 11-1/4"                                       | 2    |
| 29     | 15201A | SWITCH W/ WIRES, ROCKER RED ON-OFF                                    | 1    |

# ILLUSTRATION 10: OPTIONAL PROPANE GROUPING

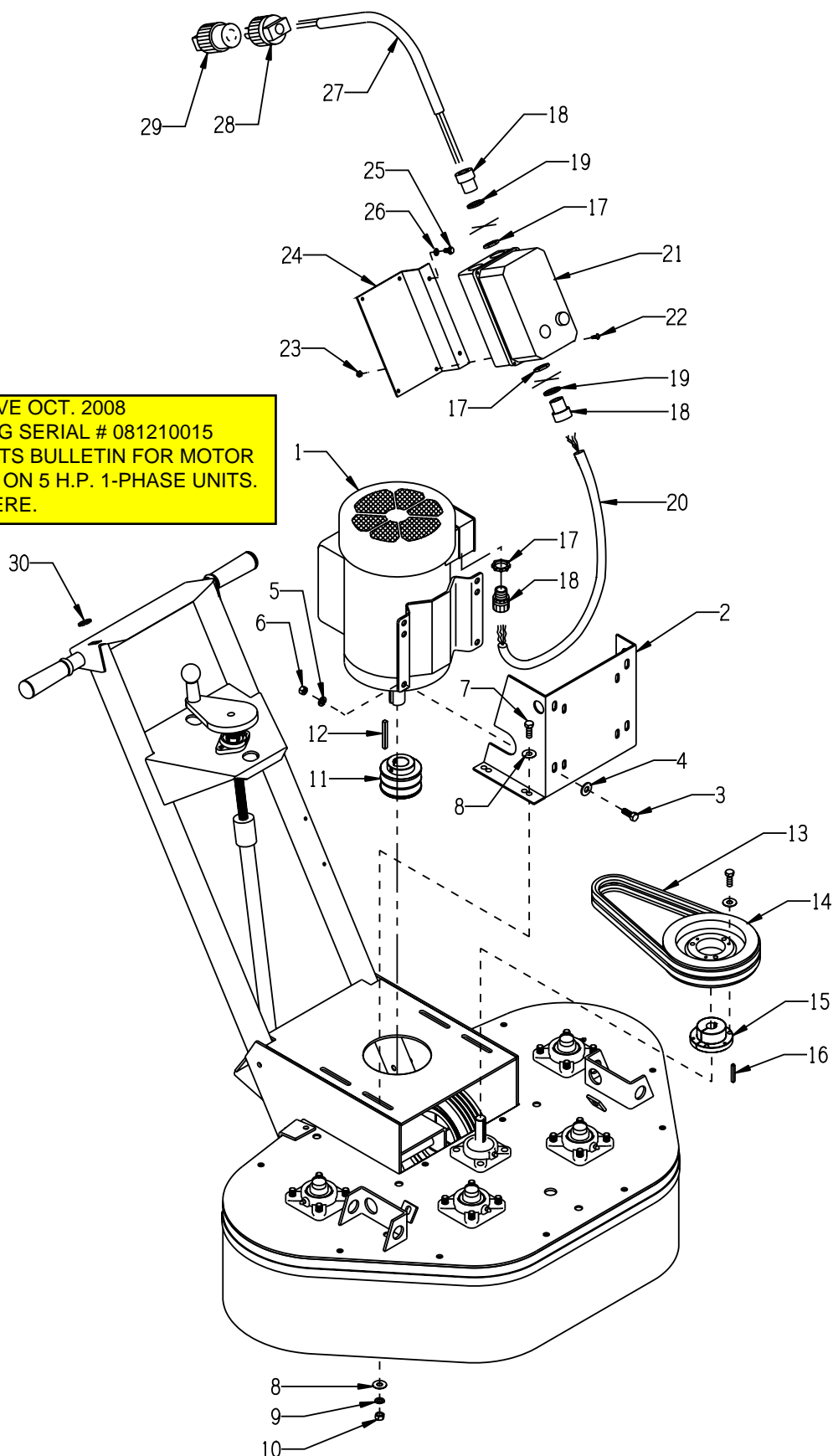


**PARTS LISTING - ILLUSTRATION 10: OPTIONAL PROPANE GROUPING**

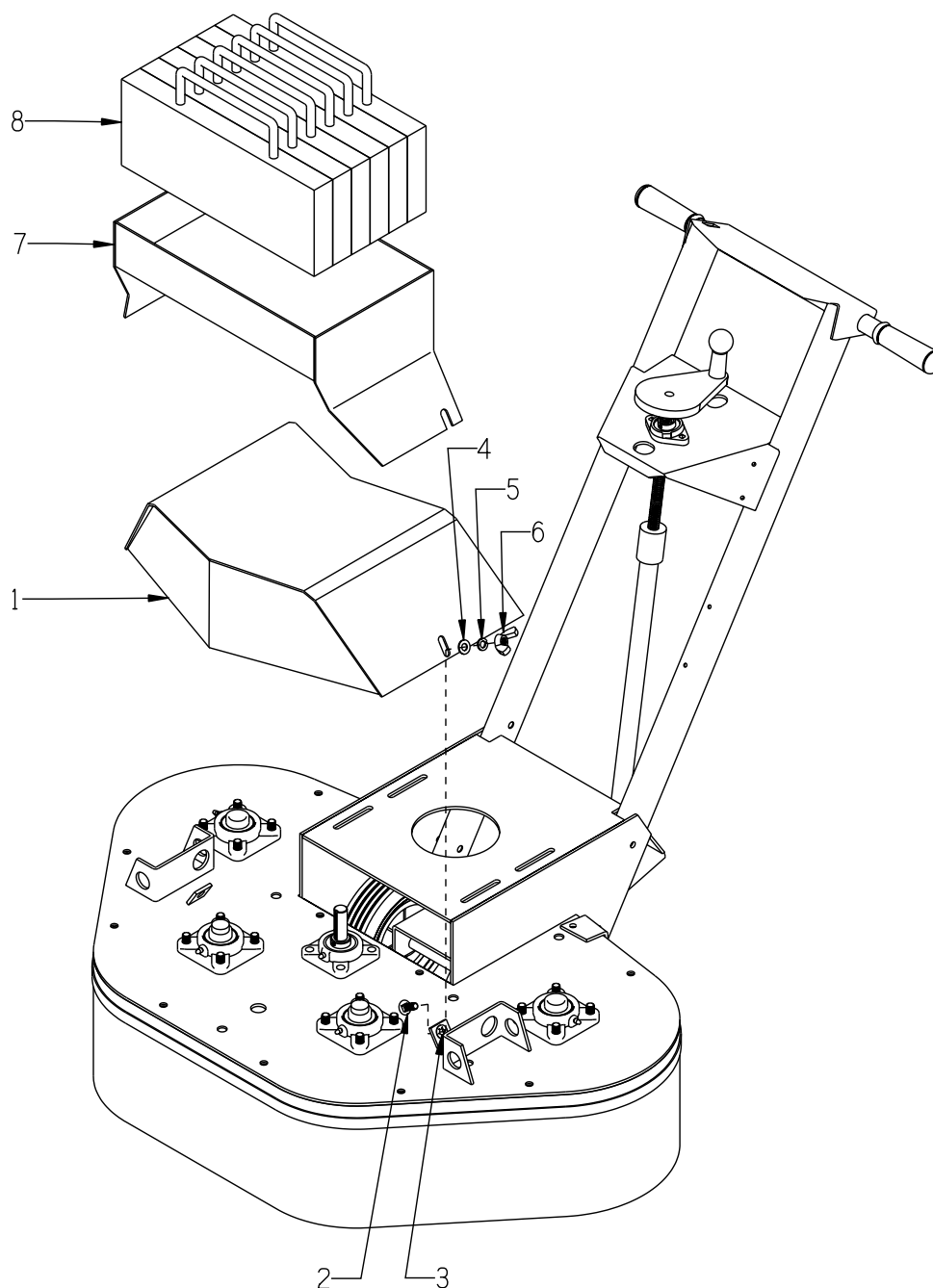
| ITEM # | PART #  | DESCRIPTION  | QTY. |
|--------|---------|--|------|
| 1      | 15012   | ENGINE, HONDA GXV340T2-DP23 PROPANE  | 1    |
| 2      | 15126   | STARTER KIT, ELECTRIC 120 VOLT AC  | 1    |
| 3      | 10031   | SCREW, CAP 1/4-20 X 1  | 2    |
| 4      | 10602   | WASHER, FLAT 1/4 SAE   | 6    |
| 5      | 10861   | NUT, KEPS 1/4-20   | 2    |
| 6      | 77262   | SCREW, CAP M6 X 1.0P X 18MM  | 2    |
| 7      | 10038   | WASHER, LOCK 1/4   | 2    |
| 8      | 10602   | WASHER, FLAT 1/4 SAE   | 2    |
| 9      | 77251   | NUT M6 X 1.0MM PITCH   | 2    |
| 10     | 15102   | VAPOR KIT FOR HONDA GXV340T2-DP23<br>KIT INCLUDES: DRY-GAS REGULATOR, VACUUM FUELOCK-FILTER,<br>FITTINGS, HOSES, CLAMPS, AND PLASTIC TIE WRAPS | 1    |
| 11     | 75021   | BRKT., PROP. REG./FUEL-LOCK FILTER   | 1    |
| 12     | 10806   | SCREW, CAP 5/16-18 X 1   | 2    |
| 13     | 10213   | WASHER, FLAT 5/16 SAE  | 2    |
| 14     | 10801   | WASHER, LOCK 5/16  | 2    |
| 15     | 10054   | NUT 5/16-18  | 2    |
| 16     | 15130   | PROPANE TANK 20LB. HORZ.   | 1    |
| 17     | 91122   | DECAL, ARROW, RED, 3 X 3   | 1    |
| 18     | 77061   | PROPANE TANK MOUNT COMPLETE (INCLUDES ITEMS 19 - 24)   | 1    |
| 19     | 77061-2 | PROPANE TANK STRAP W/ HINGE  | 1    |
| 20     | 11661   | SCREW, FLAT HD SLT 1/4-20 X 1  | 2    |
| 21     | 77061-1 | PROPANE TANK CRADLE BRACKET ONLY   | 1    |
| 22     | 77061-3 | PROPANE TANK CLAW BRACKET  | 1    |
| 23     | 10861   | NUT, KEPS 1/4-20   | 2    |
| 24     | 77061-4 | PROPANE TANK TOGGLE CLAMP  | 1    |
| 25     | 10802   | BOLT, CARRIAGE 3/8-16 X 1 FULL THD.  | 4    |
| 26     | 10025   | WASHER, FLAT 3/8 SAE (NOT SHOWN)   | 4    |
| 27     | 10811   | WASHER, LOCK 3/8 (NOT SHOWN)   | 4    |
| 28     | 10404   | NUT 3/8-16 (NOT SHOWN)   | 4    |

**ILLUSTRATION 11: MOTOR & BELT DRIVE GROUPING**

EFFECTIVE OCT. 2008  
 STARTING SERIAL # 081210015  
 SEE PARTS BULLETIN FOR MOTOR  
 CHANGE ON 5 H.P. 1-PHASE UNITS.  
[CLICK HERE.](#)

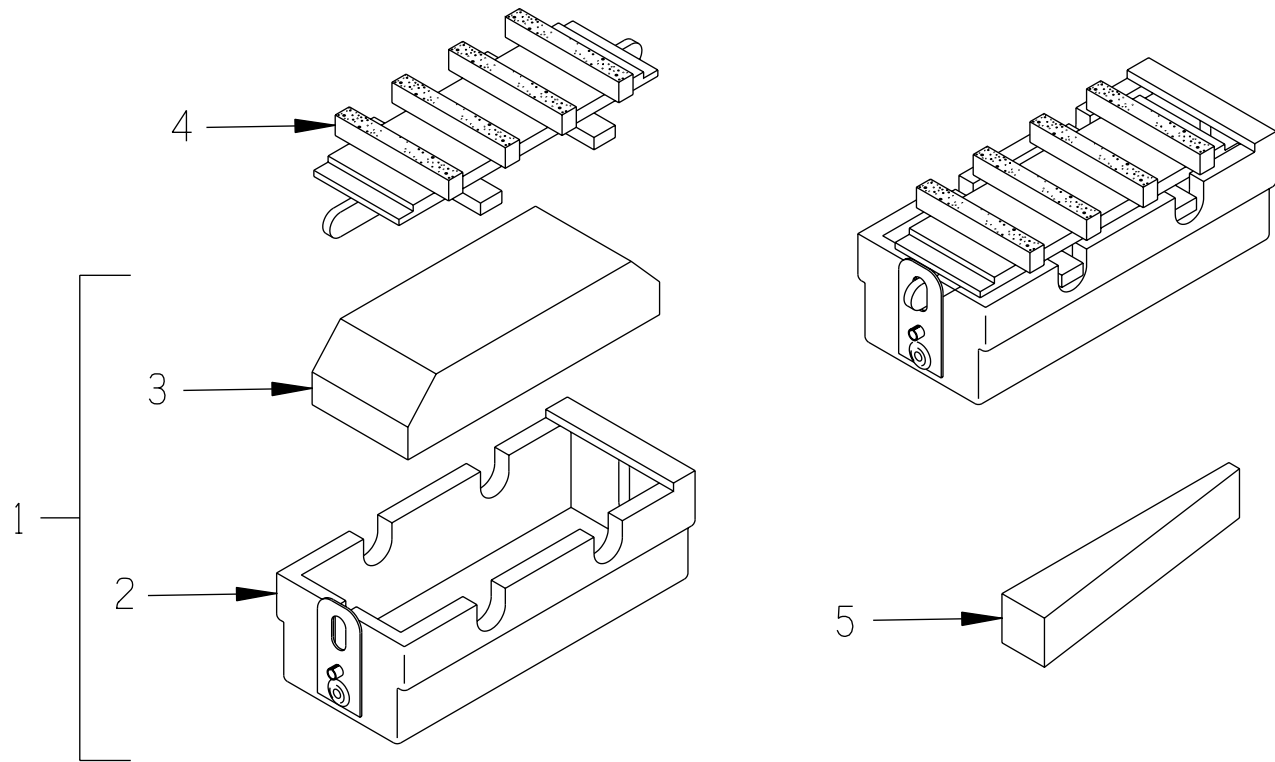


| PARTS LISTING - ILLUSTRATION 11 : MOTOR & BELT DRIVE GROUPING          |   |  |      |
|--|---|--|------|
| ITEM #   | PART #                                    | DESCRIPTION  | QTY. |
| 1  | 81026<br>16164<br>16121<br>81022<br>16020 | MOTOR, BALDOR<br>5HP-1PH 60HZ 230V 3450RPM (REPLACEMENT CAPACITORS BELOW)<br>REPLACEMENT RUN CAPACITOR 40MFD 370V (1 REQ'D.)<br>REPLACEMENT START CAPACITOR 161-193MFD 250V (2 REQ'D.)<br>5HP-3PH 60HZ 230/460V 3450RPM<br>5HP-3PH 50HZ 220/380/440V 2850RPM                                 | 1    |
| 2  | 77037                                     | MOUNT, MOTOR   | 1    |
| 3  | 10021                                     | SCREW, CAP 3/8-24 X 1  | 4    |
| 4  | 10025                                     | WASHER, FLAT 3/8 SAE   | 8    |
| 5  | 10811                                     | WASHER, LOCK 3/8   | 4    |
| 6  | 10014                                     | NUT 3/8-24   | 4    |
| 7  | 10021                                     | SCREW, CAP 3/8-24 X 1  | 4    |
| 8  | 10025                                     | WASHER, FLAT 3/8 SAE   | 8    |
| 9  | 10811                                     | WASHER, LOCK 3/8   | 4    |
| 10   | 10014                                     | NUT 3/8-24   | 4    |
| 11   | 79023                                     | SHEAVE 3"OD X 2GR.B X 1-1/8"BORE   | 1    |
| 12   | -----                                     | KEY 1/4"SQ (INCLUDED W/ MOTOR)   | 1    |
| 13   | 10035                                     | BELT 5L-330  | 2    |
| 14   | 75010                                     | SHEAVE 6.9"OD X 2GR.B X SDS  | 1    |
| 15   | 10036                                     | BUSHING, SHEAVE SDS X 3/4"BORE   | 1    |
| 16   | 10016                                     | KEY 3/16SQ X 1-1/2   | 1    |
| 17   | 10740                                     | CONDUIT LOCK NUT 3/4 NP  | 3    |
| 18   | 10959                                     | STRAIN RELIEF 3/4 NPT X .550-.650"   | 3    |
| 19   | 77081                                     | WASHER, FLAT 1-1/2 X 1-1/16 X .06  | 2    |
| 20   | 86024<br>86023                            | WIRE HARNESS<br>WIRE HARNESS 10/3 X 42"LOA (1-PHASE UNITS)<br>WIRE HARNESS 12/4 X 42"LOA (3-PHASE UNITS)   | 1    |
| 21   | 16410<br>16460<br>16406<br>16405<br>16482 | STARTER<br>11-M1-BRF-P30-26-23060 (1-PHASE, 60HZ, 230V UNITS)<br>11-M1-BRF-P23-15-23060 (3-PHASE, 60HZ, 230V UNITS)<br>11-M1-BRF-P14-10-46060 (3-PHASE, 50/60HZ, 440/460V UNITS)<br>11-M1-BRF-P23-23-23060 (3-PHASE, 50HZ, 220V UNITS)<br>11-M1-BRF-P14-10-38050 (3-PHASE, 50HZ, 380V UNITS) | 1    |
| 22   | 10362                                     | SCREW, MACHINE 8-32 X 3/4  | 4    |
| 23   | 10462                                     | NUT, KEPS 8-32   | 4    |
| 24   | 86027                                     | MOUNTING BRKT., LOVATO M1 STARTER  | 1    |
| 25   | 10846                                     | SCREW, CAP STSHW 1/4-20 X 1/2  | 2    |
| 26   | 10038                                     | WASHER, LOCK 1/4   | 2    |
| 27   | 86026<br>86022                            | WIRE HARNESS<br>WIRE HARNESS 10/3 X 24"LOA (1-PHASE UNITS)<br>WIRE HARNESS 12/4 X 24"LOA (3-PHASE UNITS)   | 1    |
| *28  | 40037                                     | PLUG, LOCKING 20A/250V L6-20P  | 1    |
| *29  | 40000                                     | CONNECTOR, LOCKING 20A/250V L6-20R   | 1    |
| 30   | 15204                                     | PLUG, RECT. HOLE, PLASTIC SNAP-IN  | 1    |
| * PLUG & CONNECTOR (ITEMS 28 & 29) ARE NOT INCLUDED WITH 3-PHASE UNITS |   |  |      |

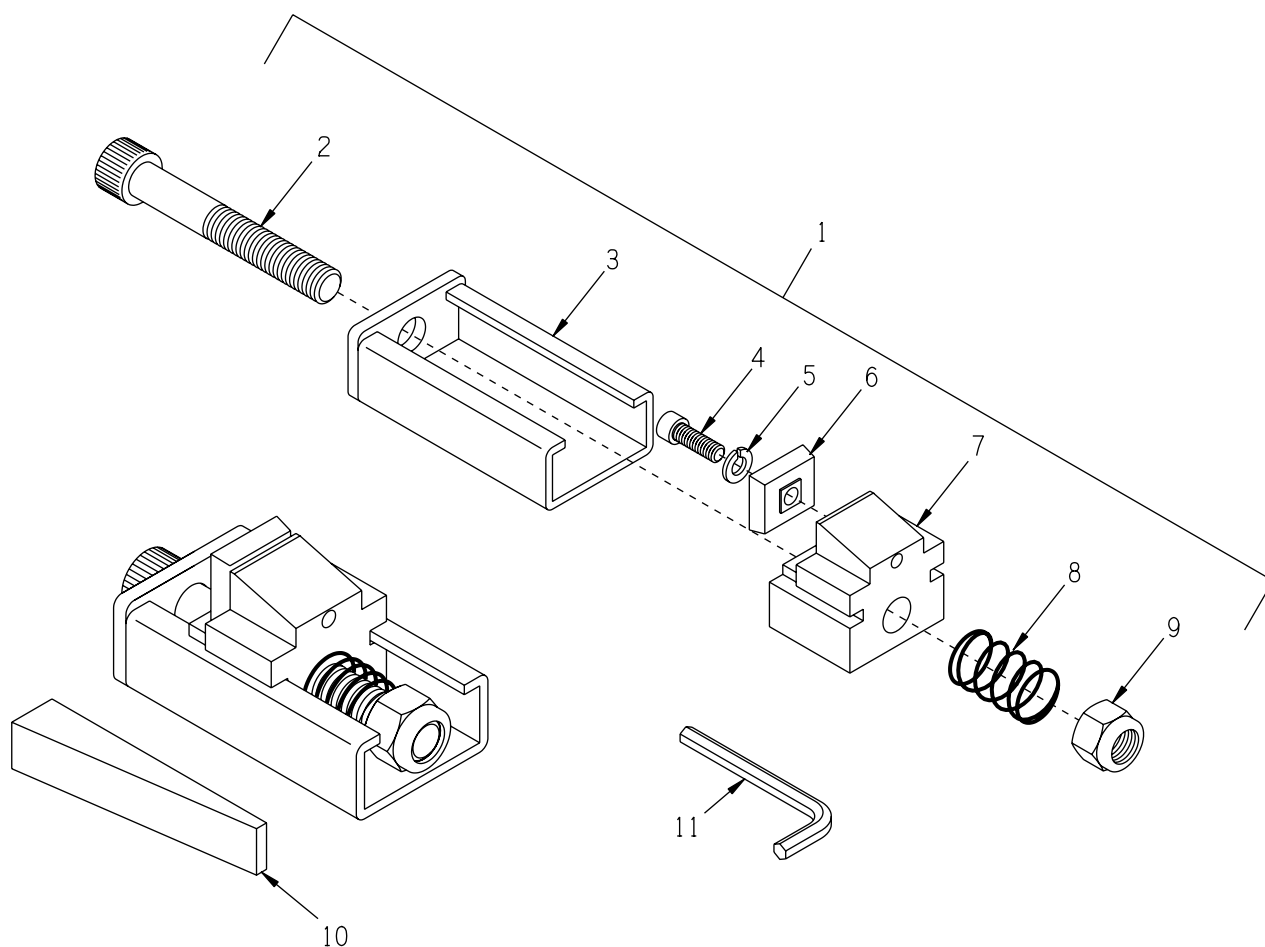
**ILLUSTRATION 12 : HOOD, OPTIONAL WEIGHT TRAY & WEIGHT BLOCKS**


| ITEM # | PART # | DESCRIPTION                         | QTY. |
|--------|--------|-------------------------------------|------|
| 1      | 75001  | HOOD                                | 1    |
| 2      | 10802  | BOLT, CARRIAGE 3/8-16 X 1 FULL THD. | 2    |
| 3      | 10468  | NUT, PUSH 3/8" (RETAINING CLIP)     | 2    |
| 4      | 10025  | WASHER, FLAT 3/8 SAE                | 2    |
| 5      | 10811  | WASHER, LOCK 3/8                    | 2    |
| 6      | 10903  | NUT, WING 3/8-16                    | 2    |
| 7      | 75050  | WT-2 WEIGHT HOLDING TRAY (OPTIONAL) | 1    |
| 8      | 77506  | WEIGHT BLOCK, 40 LB. (OPTIONAL)     | 6    |

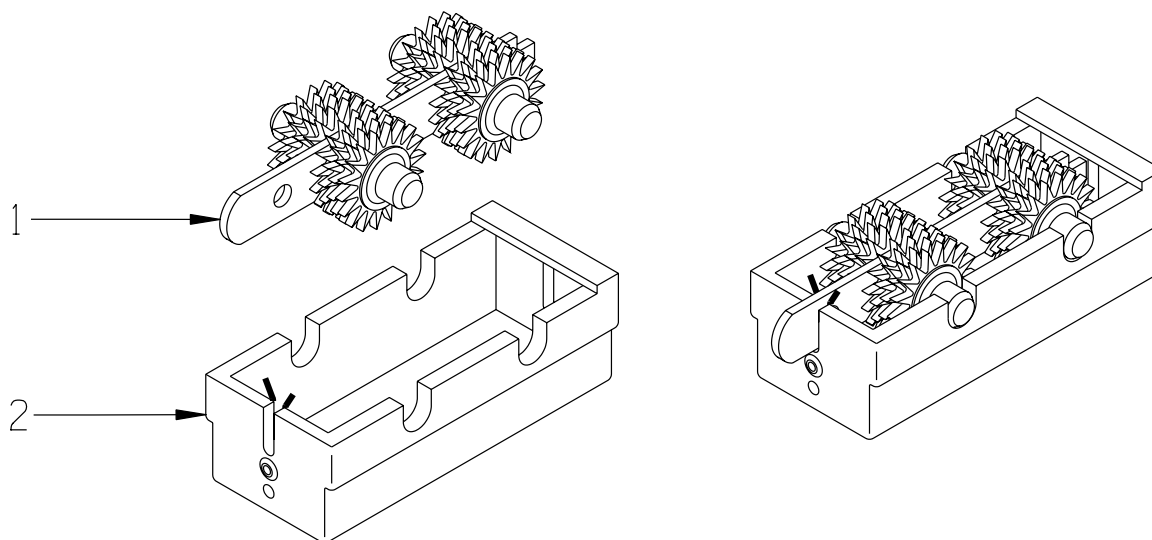


**ILLUSTRATION 13 : DYMA-SERT™ ACCESSORY**

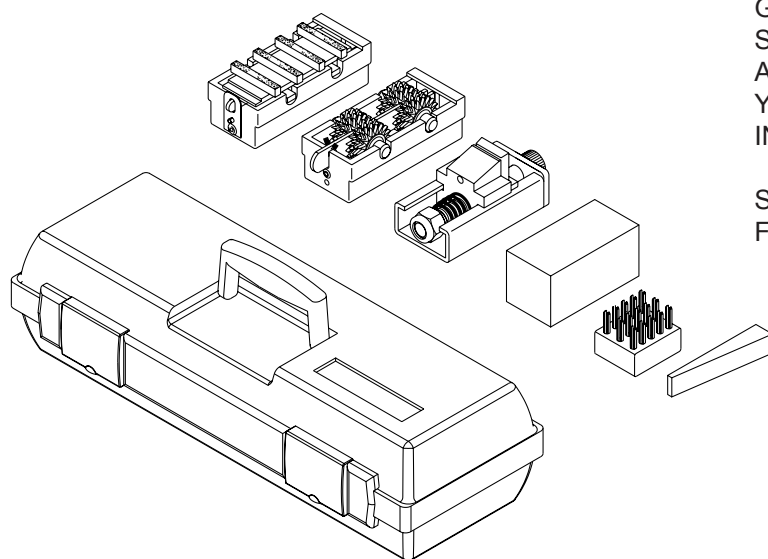
| ITEM #   | PART # | DESCRIPTION   | *QTY. |
|--|--------|---|-------|
| 1  | 19120  | CG221D DYMA-SERT HOLDING CASE W/PAD (ITEMS 2 AND 3) | 12    |
| 2  | 19121  | DYMA-SERT HOLDING CASE (INCLUDES CLIP & RIVET)      | 1     |
| 3  | 19140  | RUBBER SHOCK PAD, DYMA-SERT                         | 1     |
| 4  | -----  | DYMA-SERT ASSEMBLY (SOLD SEPARATLY)                 | 12    |
|  | 19110  | EG-1X, 30-40 GRIT (GENERAL PURPOSE)                 |       |
|  | 19130  | EG-2X, 30-40 GRIT (ABRASIVE CONCRETE)               |       |
|  | 19180  | EG-3X, 30-40 GRIT (EPOXY MORTARS)                   |       |
|  | 19250  | EG-5X, 50 GRIT (TERRAZZO)                           |       |
|  | 19260  | EG-7X, 80 GRIT (TERRAZZO)                           |       |
|  | 19270  | EG-9X, 120 GRIT (TERRAZZO)                          |       |
| 5  | 12160  | WEDGE CG225, HARDWOOD                               | 12    |
| * QUANTITIES FOR ITEMS 1, 4, AND 5 ARE PER 4-DISC GRINDER<br>QUANTITIES FOR ITEMS 2 & 3 ARE PER EACH DYMA-SERT ACCESSORY |        |   |       |

**ILLUSTRATION 14 : STRIP-SERT™ ACCESSORY**


| ITEM #  | PART #         | DESCRIPTION   | *QTY. |
|---|----------------|---|-------|
| 1   | 12400<br>12401 | STRIP-SERT ASSEMBLY<br>ASSEMBLY WITH PRO TUNGSERT (ITEMS 2 THRU 9)<br>ASSEMBLY WITHOUT PRO TUNGSERT, ITEM 6 | 12    |
| 2   | 12405          | SCREW, SKT.HD.CAP 1/2-13 X 3.5,GR.5   | 1     |
| 3   | 12404          | TUNGSERT HOLDER BOX, STRIP-SERT   | 1     |
| 4   | 11573          | SCREW, SKT. HD. CAP 1/4-20 X 3/4  | 1     |
| 5   | 11688          | WASHER, HI-COLLAR LOCK .26ID X .363   | 1     |
| 6<br>or   | 12402<br>12407 | PRO TUNGSERT, 4 SIDED CARBIDE<br>PRO TUNGSERT PACKAGE (SIX OF ITEMS 4, 5, 6 & ONE OF ITEM 11)               | 1     |
| 7   | 12403          | TUNGSERT BLOCK, STRIP-SERT  | 1     |
| 8   | 12406          | SPRING, COMP. .765"OD X 1.25"FL   | 1     |
| 9   | 10155          | NUT, HEX NYLON LOCK 1/2-13  | 1     |
| 10  | 12160          | WEDGE CG225, HARDWOOD   | 1     |
| 11  | 12413          | WRENCH, HEX L-KEY 3/16", SHORT-ARM  | 1     |
| * QUANTITIES FOR ITEM 1, IS PER 4-DISC GRINDER<br>QUANTITIES FOR ITEMS 2 THRU 9 ARE PER EACH STRIP-SERT ACCESSORY |                |   |       |

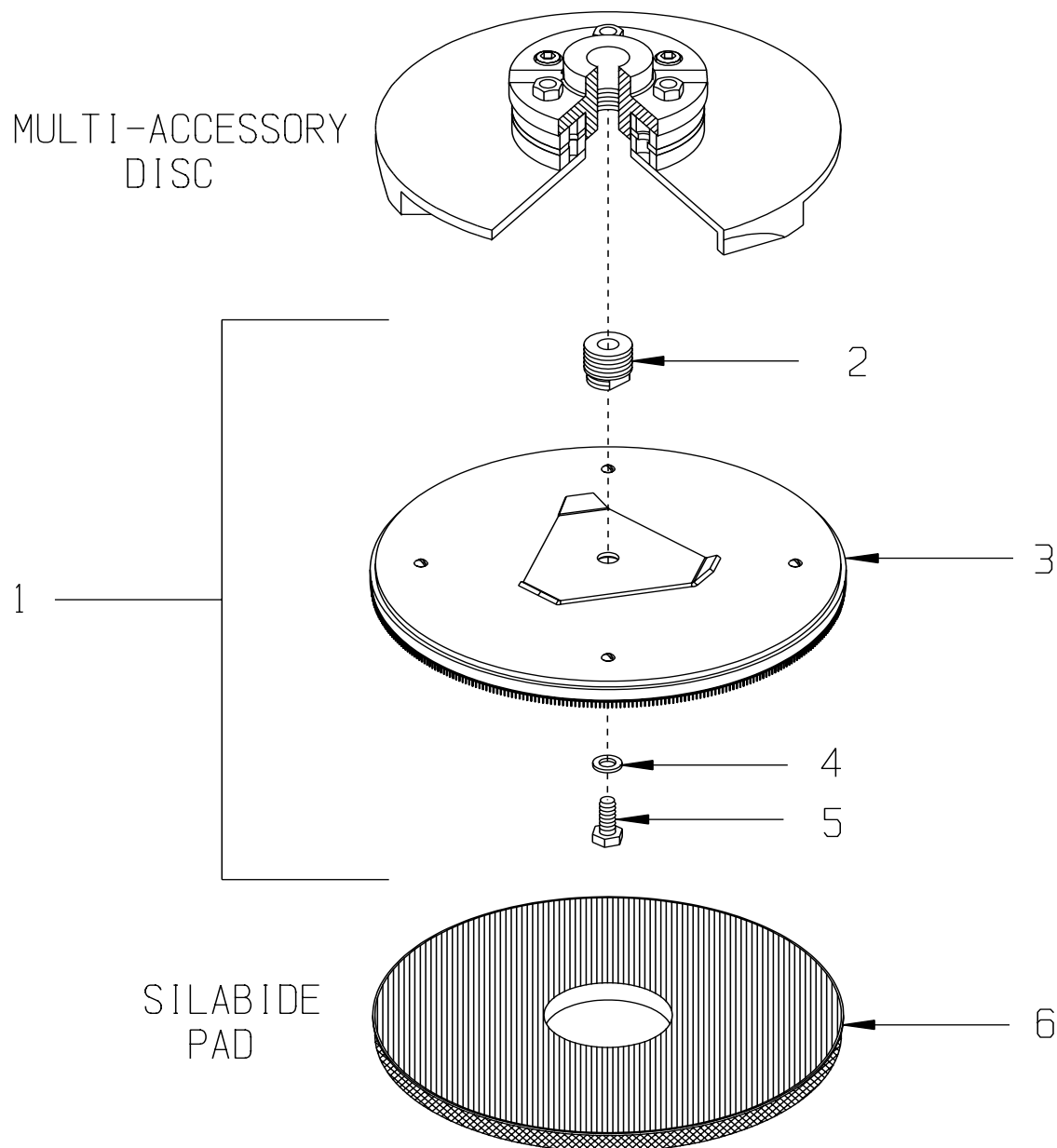
**ILLUSTRATION 15 : SCARIFIER ACCESSORY**

| ITEM #                              | PART #         | DESCRIPTION   | *QTY. |
|-------------------------------------|----------------|---|-------|
| 1                                   | 12120<br>12130 | THROW-A-WAY SCRAIFIER<br>CG222 TAW SCARIFIER, STANDARD<br>CG223 TAW SCARIFIER, HEAVY DUTY | 12    |
| 2                                   | 12114          | CG221 SCARIFIER HOLDING CASE  | 12    |
| * QUANTITIES ARE PER 4-DISC GRINDER |                |   |       |

**ILLUSTRATION 16 : OTHER ACCESSORIES**

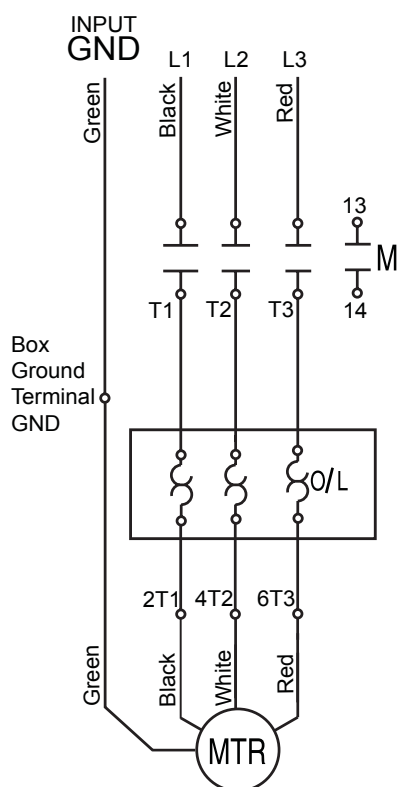
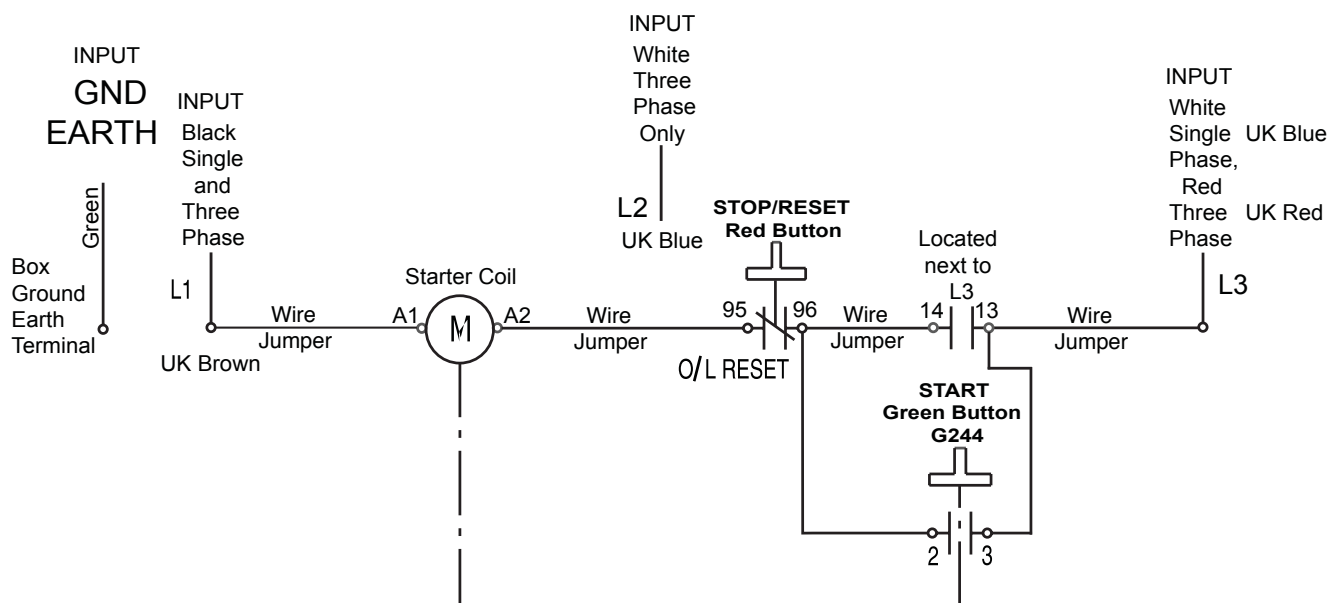
GRINDING STONES, WIRE BRUSHES, SILABIDE PADS, START-UP PACKS AND OTHER ACCESSORIES ARE AVAILABLE. REFER TO PRICE LIST CATALOG OR CALL YOUR LOCAL EDCO REPRESENTATIVE FOR MORE INFORMATION.

SEE ILLUSTRATION 18 FOR OPTIONAL PAD DRIVER FOR THE SILABIDE PADS.

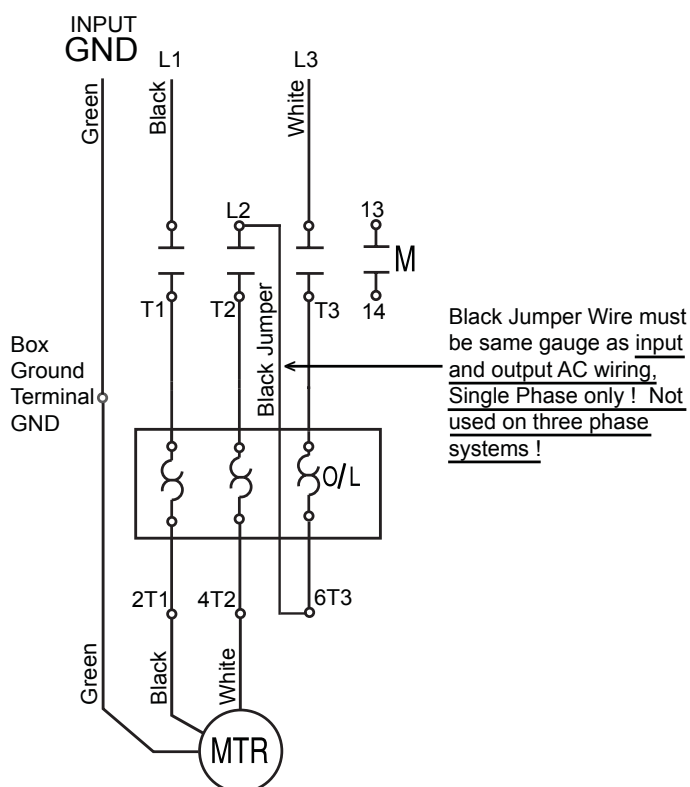
**ILLUSTRATION 17 : OPTIONAL PAD DRIVER DISC ASSEMBLY**


| ITEM #   | PART # | DESCRIPTION   | *QTY. |
|--|--------|---|-------|
| 1  | 76040  | PAD DRIVER DISC ASSEMBLY (INCLUDES ITEMS 2 THRU 5)  | 4     |
| 2  | 76042  | HUB STUD, PAD DRIVER (GRINDER)                      | 1     |
| 3  | 76041  | DISC ONLY 11", PAD DRIVER                           | 1     |
| 4  | 10312  | WASHER, FLAT 1/2 SAE                                | 1     |
| 5  | 10304  | SCREW, CAP 1/2-20 X 1                               | 1     |
| 6  | 13013  | SILABIDE PAD, 11" MEDIUM (NOT INCLUDED W/ ASSEMBLY) | 4     |
| *QUANTITIES FOR ITEMS 2 THRU 5 ARE PER EACH DISC ASSEMBLY<br>QUANTITIES FOR ITEMS 1 AND 6 ARE PER 4-DISC GRINDER |        |   |       |

# STARTER BOX WIRING DIAGRAM



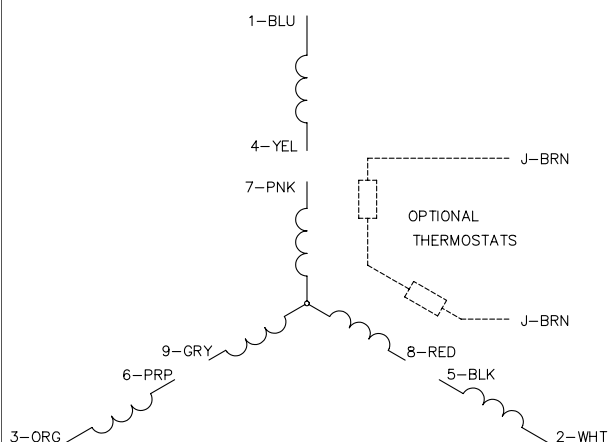
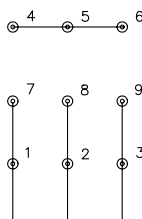
THREE PHASE



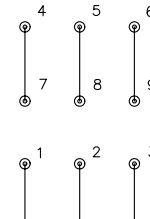
SINGLE PHASE

**MOTOR WIRING DIAGRAM 3-PHASE 60 Hz 230/460V**

CD0005

LOW VOLTAGE  
(2Y)

LINE

HIGH VOLTAGE  
(1Y)

LINE

**NOTES:**

1. INTERCHANGE ANY TWO LINE LEADS TO REVERSE ROTATION.
2. OPTIONAL THERMOSTATS ARE PROVIDED WHEN SPECIFIED.
3. ACTUAL NUMBER OF INTERNAL PARALLEL CIRCUITS MAY BE A MULTIPLE OF THOSE SHOWN ABOVE.
4. LEAD COLORS ARE OPTIONAL. LEADS MUST ALWAYS BE NUMBERED AS SHOWN.

REV. DESC: REVISE TO SHOW OPTIONAL COLORS

REV. LTR: E BY: JLP REVISED: 01/19/99 10:15 TDR: 0171435

S00000

FILE: AAA00005140

MDL: -

MTL: -

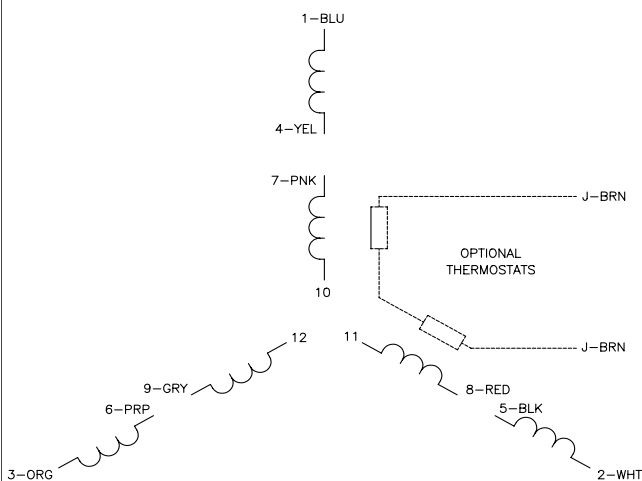
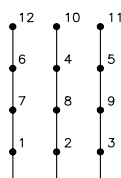
**BALDOR ELECTRIC Co.**

3PH, DV, 9 LEADS

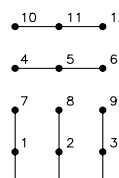
CD0005

**MOTOR WIRING DIAGRAM 3-PHASE 50 Hz 220/380/440V**

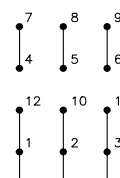
CD0044

LOW VOLTAGE  
(2D)

LINE

MED. VOLTAGE  
(2Y)

LINE

HIGH VOLTAGE  
(1D)

LINE

**NOTES:**

1. INTERCHANGE ANY TWO LINE LEADS TO REVERSE ROTATION.
2. OPTIONAL THERMOSTATS ARE PROVIDED WHEN SPECIFIED.
3. ACTUAL NUMBER OF INTERNAL PARALLEL CIRCUITS MAY BE A MULTIPLE OF THOSE SHOWN ABOVE.
4. LEAD COLORS ARE OPTIONAL. LEADS MUST ALWAYS BE NUMBERED AS SHOWN.

REV. DESC: REVISE TO SHOW OPTIONAL COLORS

REV. LTR: G BY: JLP REVISED: 01/19/99 4:09 TDR: 0171435

CD0044

FILE: AAA00008373

MDL: -

MTL: -

**BALDOR ELECTRIC Co.**

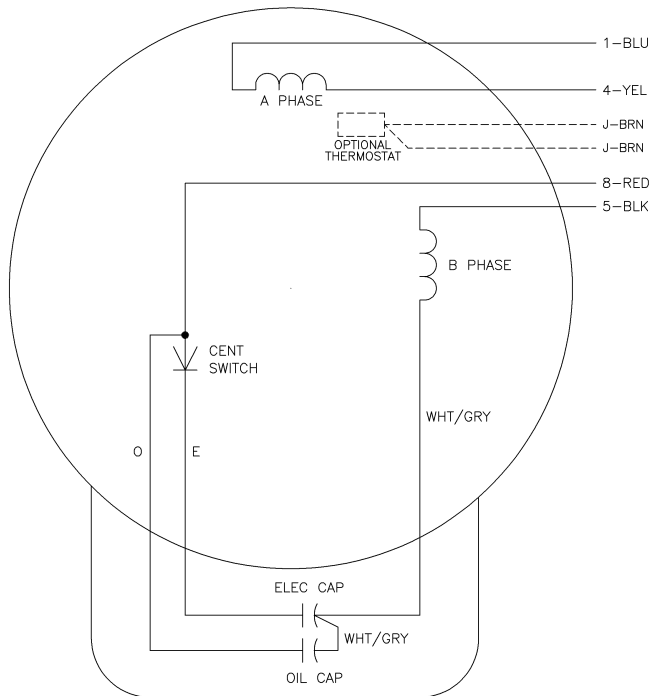
3PH, TV, 12 LEADS, 2D/2Y/1D

CD0044



**MOTOR WIRING DIAGRAM 1-PHASE 60 Hz 230V**

CD0017A02



|     | LINE A | LINE B |
|-----|--------|--------|
| STD | 1,8    | 4,5    |
| OPP | 1,5    | 4,8    |

**NOTES:**

1. STANDARD ROTATION IS CCW FACING END OPPOSITE SHAFT EXTENSION.
2. OPTIONAL THERMOSTAT IS PROVIDED WHEN SPECIFIED.
3. MULTIPLE CAPACITORS ARE CONNECTED IN PARALLEL UNLESS OTHERWISE SPECIFIED.
4. LEAD COLORS ARE OPTIONAL. LEADS MUST ALWAYS BE NUMBERED AS SHOWN.

REV. DESC: REVISE TO SHOW OPTIONAL COLORS

REV. LTR: B BY: JLP REVISED: 04/09/99 11:30 TDR: 0178636

CD0017A02

FILE: AAA00007514

MDL: --

MTL: --

**BALDOR ELECTRIC Co.**

TYPE LC, SV, REV, 4 LEADS

CD0017A02

**NOTES**

Record here any repairs or changes made to the Grinder

**LIMITED EQUIPMENT WARRANTY OF SALE – TERMS & CONDITIONS**

Equipment Development Company, Inc. herein referred to as EDCO (Seller) warrants that each new unit manufactured by EDCO to be free from defects in material and workmanship in normal use and service for a period of (1) one year (except for the cutter drum assembly on all model concrete/asphalt planes, in which case the warranty period shall be 90 days) from date of shipment to the original retail or equipment rental center owner.

Accessories or equipment furnished and installed on the product by EDCO but manufactured by others, including, but not limited to engines, motors, electrical components, transmissions etc., shall carry the accessory manufacturers own warranty.

EDCO will, at its option, repair or replace, at the EDCO factory or at a point designated by EDCO, any part which shall appear to the satisfaction of EDCO inspection to have been defective in material or workmanship.

EDCO reserves the right to modify, alter and improve any part or parts without incurring any obligation to replace any part or parts previously sold without such modified, altered or improved part or parts.

This warranty is in lieu of and excludes all other warranties, expressed, implied, statutory, or otherwise created under applicable law including, but not limited to the warranty of merchantability and the warranty of fitness for a particular purpose in no event shall seller or the manufacturer of the product be liable for special, incidental, or consequential damages, including loss of profits, whether or not caused by or resulting from the negligence of seller and/or the manufacturer of the product unless specifically provided herein. In addition, this warranty shall not apply to any products or portions thereof which have been subjected to abuse, misuse, improper installation, maintenance, or operation, electrical failure or abnormal conditions and to products which have been tampered with, altered, modified, repaired, reworked by anyone not approved by seller or used in any manner inconsistent with the provisions of the above or any instructions or specifications provided with or for the product

**FORCE MAJEURE**

Seller's obligation hereunder are subject to, and Seller shall not be held responsible for, any delay or failure to make delivery of all or any part of the Product due to labor difficulties, fires, casualties, accidents, acts of the elements, acts of God, transportation difficulties, delays by a common carrier, inability to obtain Product, materials or components or qualified labor sufficient to timely perform part of or all of the obligations contained in these terms and conditions, governmental regulations or actions, strikes, damage to or destruction in whole or part of manufacturing plant, riots, terrorist attacks or incidents, civil commotions, warlike conditions, flood, tidal waves, typhoon, hurricane, earthquake, lightning, explosion or any other causes, contingencies or circumstances within or without the United States not subject to the Seller's control which prevent or hinder the manufacture or delivery of the Products or make the fulfillment of these terms and conditions impracticable. In the event of the occurrence of any of the foregoing, at the option of Seller, Seller shall be excused from the performance under these Terms and Conditions, or the performance of the Seller shall be correspondingly extended.

This document sets forth the terms and conditions pursuant to which the purchaser ("Purchaser") will purchase and Equipment Development Co. Inc. ("Seller") will sell the products, accessories, attachments (collectively the Products") ordered by the Purchaser. These terms and conditions shall govern and apply to the sale of Seller's Products to Purchaser, regardless of any terms and conditions appearing on any purchase order or other forms submitted by Purchaser to Seller, or the inconsistency of any terms therein and herein.

**1. PRICE**

All prices set forth on any purchase order or other document are F.O.B. Sellers facility or distribution point, as may be determined by Seller (F.O.B. Point). All prices are exclusive of any and all taxes, including, but not limited to, excise, sales, use, property or transportation taxes related to the sale or use of the Products, now or hereafter imposed, together with all penalties and expenses. Purchaser shall be responsible for collecting and/or paying any and all such taxes, whether or not they are stated in any invoice for the Products. Unless otherwise specified herein, all prices are exclusive of inland transportation, freight, insurance and other costs and expenses relating to the shipment of the Products from the F.O.B. point to Purchaser's facility. Any prepayment by Seller of freight insurance and other costs shall be for the account of Purchaser and shall be repaid to Seller.

**2. PAYMENT TERMS**

Payment terms are as follows. 2% 10 days (to approved and qualified accounts). Net 30 days. This is a cash discount for invoices paid within 10 days after the invoice date, regardless of date of receipt of shipment. This is not a trade discount and will not be granted to accounts that do not adhere to stated terms.

\*All past due accounts are subject to a late payment fee of 1.5% per month or a maximum allowed by law if different, along with the expenses incidental to collection including reasonable attorney's fees and costs.

\*Seller reserves the right to hold shipments against past due accounts.

\*Seller reserves the right to alter payment terms.

**3. FREIGHT TERMS**

All shipments will be made F.O.B. shipping point as designated in these Terms and Conditions, and title shall pass at the F.O.B. point. Delivery to the initial common carrier shall constitute delivery to the Purchaser. Any claims for loss or damage during shipment are to be filed with carrier by the Purchaser. Seller will not assume responsibility for the performance of the carrier.

Back orders will be shipped in the most practical fashion with charges consistent with our freight policy established with the original order. UPS, FED EX, MAIL or shipments by other couriers are subject to the same terms and conditions as outlined in paragraph #3 "Freight Terms".

**4. DELIVERY, DAMAGES, SHORTAGES**

Seller shall use reasonable efforts to attempt to cause the Products to be delivered as provided for in these Terms & Conditions. Delivery to the initial common carrier shall constitute the delivery to the Purchaser. Seller's responsibility, in so far as transportation risks are concerned ceases upon the delivery of the Products in good condition to such carrier at the F.O.B. point and all the Products shall be shipped at the Purchaser's risk. Seller shall not be responsible or liable for any loss of income and/or profits, or incidental, special, consequential damages resulting from Seller's delayed performance in shipment and delivery.

**5. RETURN OF DEFECTIVE PRODUCTS**

Defective or failed material shall be held at the Purchaser's premises until authorization has been granted by Seller to return or dispose of Products. Products that are to be returned for final inspection must be returned Freight Prepaid in the most economical way. Credit will be issued for material found to be defective upon Seller's inspection based on prices at time of purchase.

**6. PRODUCTS ORDERED IN ERROR**

Products may be returned, provided that claim is made and Seller is notified within 7 days of receipt of Products, and the Products are in original buyer's possession not more than 30 days prior to return, subject to Seller's approval. If Products are accepted for return, they must be Freight Prepaid and buyer will be charged a minimum of 15% rehandling charge, plus a charge back for outbound freight charges if the original order was shipped prepaid. Returns are not accepted for any Products that are specifically manufactured to meet the buyer's requirement of either specifications or quantity.

**AGREEMENTS**

These Terms and Conditions constitute the entire agreement between Seller and Purchaser as it relates to terms and conditions of sale, and supersedes any and all prior oral or written agreements, correspondence, quotations or understandings heretofore in force between the parties relating to the subject matter hereof. There are no agreements between Seller and Purchaser with respect to the Product herein except those specifically set forth in and made part of these terms and conditions. Any additional terms, conditions and/or prices are rejected by Seller.

These terms and conditions may be modified, cancelled or rescinded only by a written agreement of both parties executed by their duly authorized agents.

**USE ONLY GENUINE CONTRX PARTS & ACCESSORIES**  
**For your own safety, the safety of others and the life of your machine.**

**Equipment Development Company, Inc.**



A Division of Equipment Development Company, Inc.

## PARTS BULLETIN

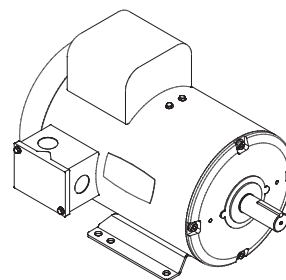
### MOTOR TYPE CHANGE ON 5 H.P. 1-PHASE ELECTRIC EQUIPMENT EFFECTIVE OCT. 2008, STARTING W/ S/N 081010202

Leeson Motor (Cat. No. 131549) replaces Baldor (Cat. No. L3608T) on the following Equipment:

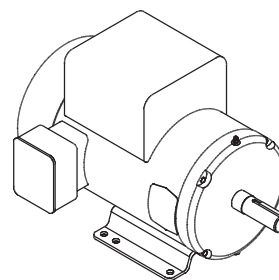
CPM8 Scarifier/Planer  
TG10 Turbo Grinder  
4EC Concrete Floor Grinder  
DS18 Walk Behind Saw  
SB14 Walk Behind Saw  
C10 Crack Saw  
MS20 Masonry Saw

The Model Suffix for this Power Option will be 5L/230/1 (5HP Leeson/230 Volt/Single Phase).  
Example: CPM8-5L/230/1

| SPECIFICATION CHART |                           |                           |
|---------------------|---------------------------|---------------------------|
|                     | LEESON<br>Cat. No. 131549 | BALDOR<br>Cat. No. L3608T |
| Part Number         | 16069                     | 81026                     |
| Horse Power         | 5                         | 5                         |
| Phase               | 1                         | 1                         |
| Hertz               | 60                        | 60                        |
| Volts               | 230                       | 230                       |
| Full Load Amps      | 19.8                      | 19.5                      |
| RPM                 | 3500                      | 3450                      |
| Frame               | 184T                      | 184T                      |
| Shaft               | 1-1/8"                    | 1-1/8"                    |
| Weight              | 93 Lbs.                   | 86 Lbs.                   |



LEESON  
MOTOR



BALDOR  
MOTOR

#### REPLACEMENT CAPACITORS FOR LEESON MOTOR:

PART # 16521 - START CAPACITOR, LEESON 003049.04 390MFD 250V

PART # 16522 - RUN CAPACITOR, LEESON 003050.05 45MFD 370V

See the reverse side of this page for the Wiring Diagrams for these Motors.

