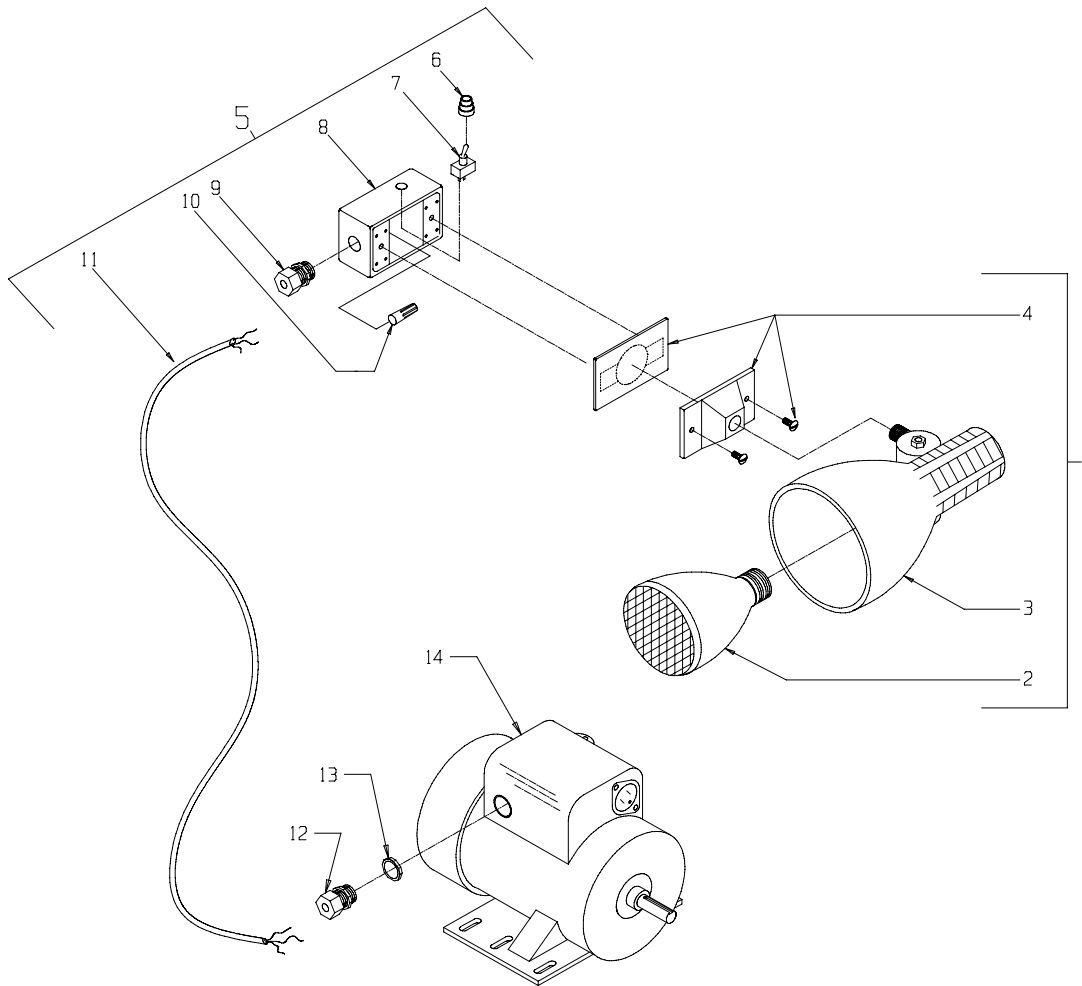
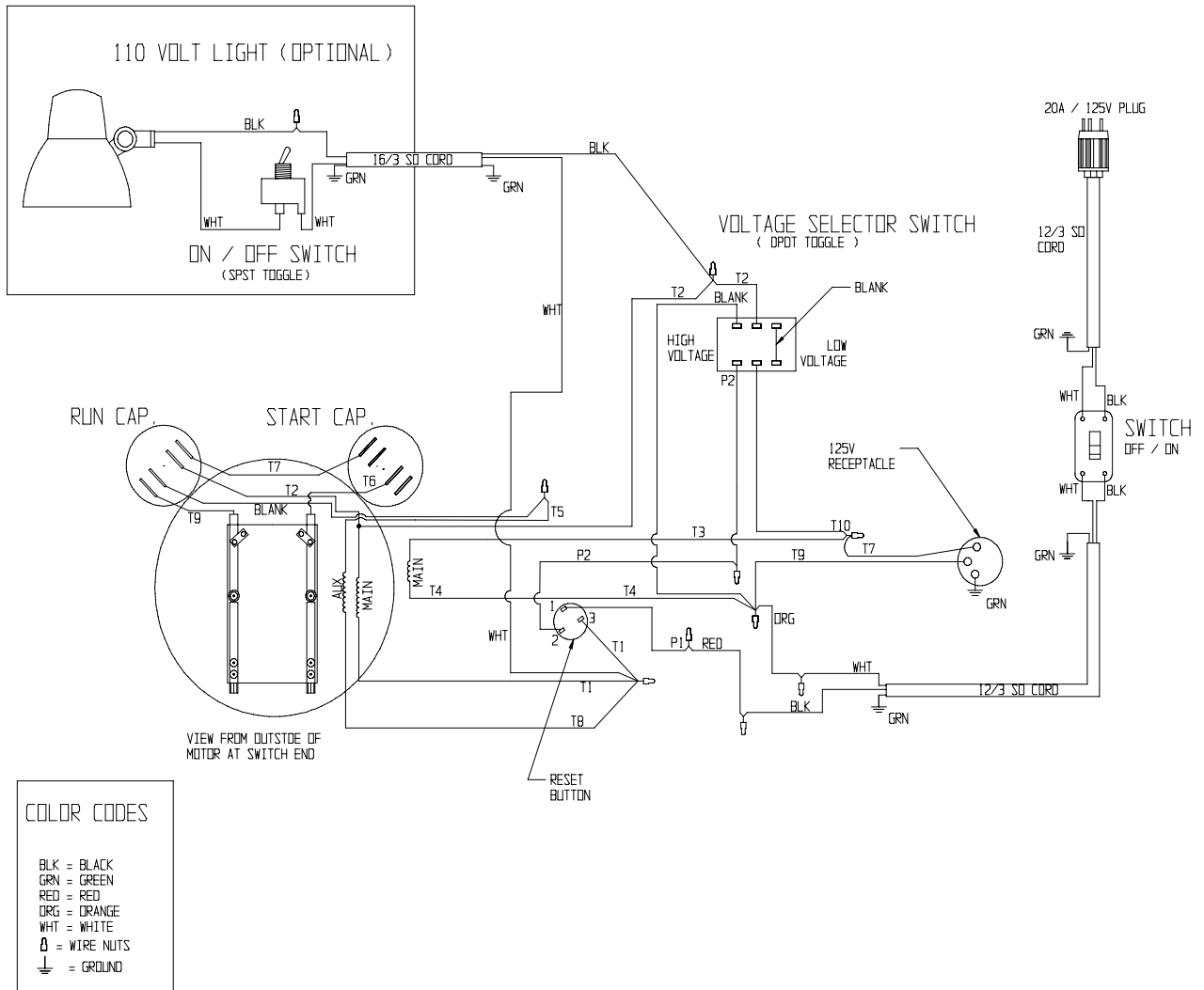


OPTIONAL 110 VOLT LAMP KIT ASSEMBLY
FOR LEESON ELECTRIC TROWEL
PART # C84001



ITEM #	PART #	DESCRIPTION	QUANTITY
1	C84007A	LAMP SUB-ASSEMBLY (INCLUDES ITEMS 2 - 4)	1
2	C84006	LIGHT, FLOOD 75W	1
3	C84007	LAMP HOLDER	1
4	C84008	LAMP HOLDER BOX COVER W/ GASKET & SCREWS	1
5	C84009A	SWITCH BOX SUB-ASSEMBLY (INCLUDES ITEMS 6 - 11)	1
6	10674	BOOT, TOGGLE SWITCH	1
7	10633	SWITCH, TOGGLE SPST	1
8	C84009	BOX, SINGLE GANG WEATHERPROOF	1
9	40066	CONNECTOR, STRAIN RELIEF ½ NPT x .35 -.45 RANGE	1
10	10965	CONNECTOR, WIRE NUT (RED)	1
11	C84029	WIRE HARNESS 16/3 x 66"	1
12	10959	CONNECTOR, STRAIN RELIEF ¾NPT x .550-.650"	1
13	10740	CONDUIT LOCK NUT ¾ NP	1
14	-----	LEESON MOTOR	1

WIRING DIAGRAM FOR LEESON ELECTRIC TROWEL



E-PT-PLAWD-5/99



EQUIPMENT DEVELOPMENT COMPANY, INC.

100 Thomas Johnson Drive, Frederick, MD 21702-4600 USA

Phone: 1-800-638-3326 or 301-663-1600 Fax: 1-800-437-3326 or 301-663-1607

email: sales@edcoinc.com Website: www.edcoinc.com