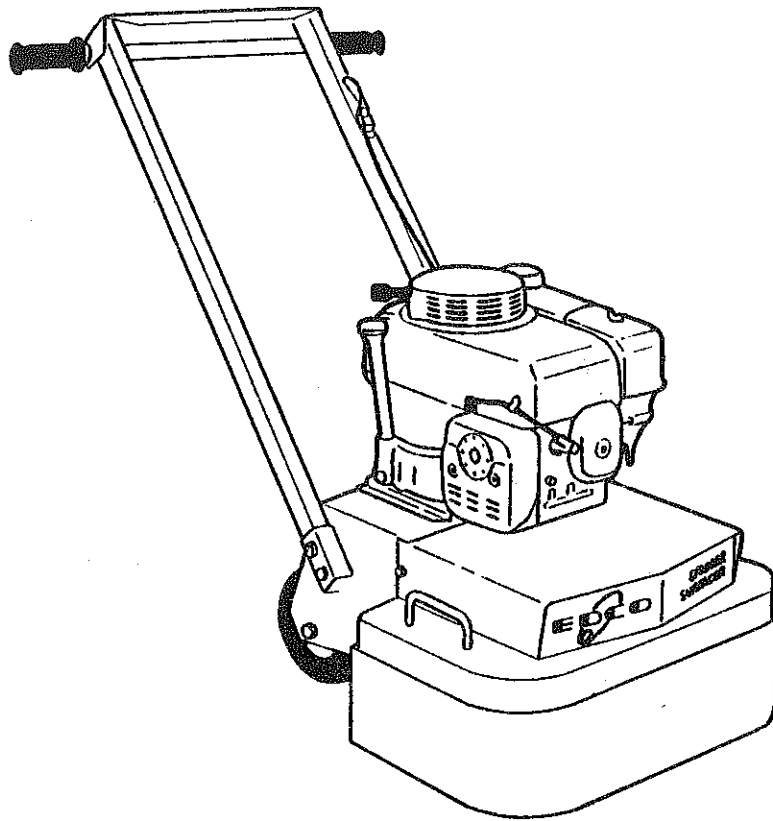


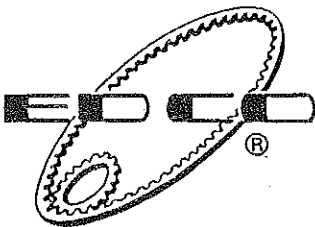
Jan. 1, 1990

INDUSTRIAL SURFACERS

PARTS MANUAL



Models 2EC-S & 2GC-6-S



EQUIPMENT DEVELOPMENT COMPANY, INC.

100 THOMAS JOHNSON DRIVE, FREDERICK, MARYLAND 21702-4305 USA
301-663-1600 TOLL FREE 1-800-638-3326 FAX 301-663-1607

PRINTED IN U.S.A.

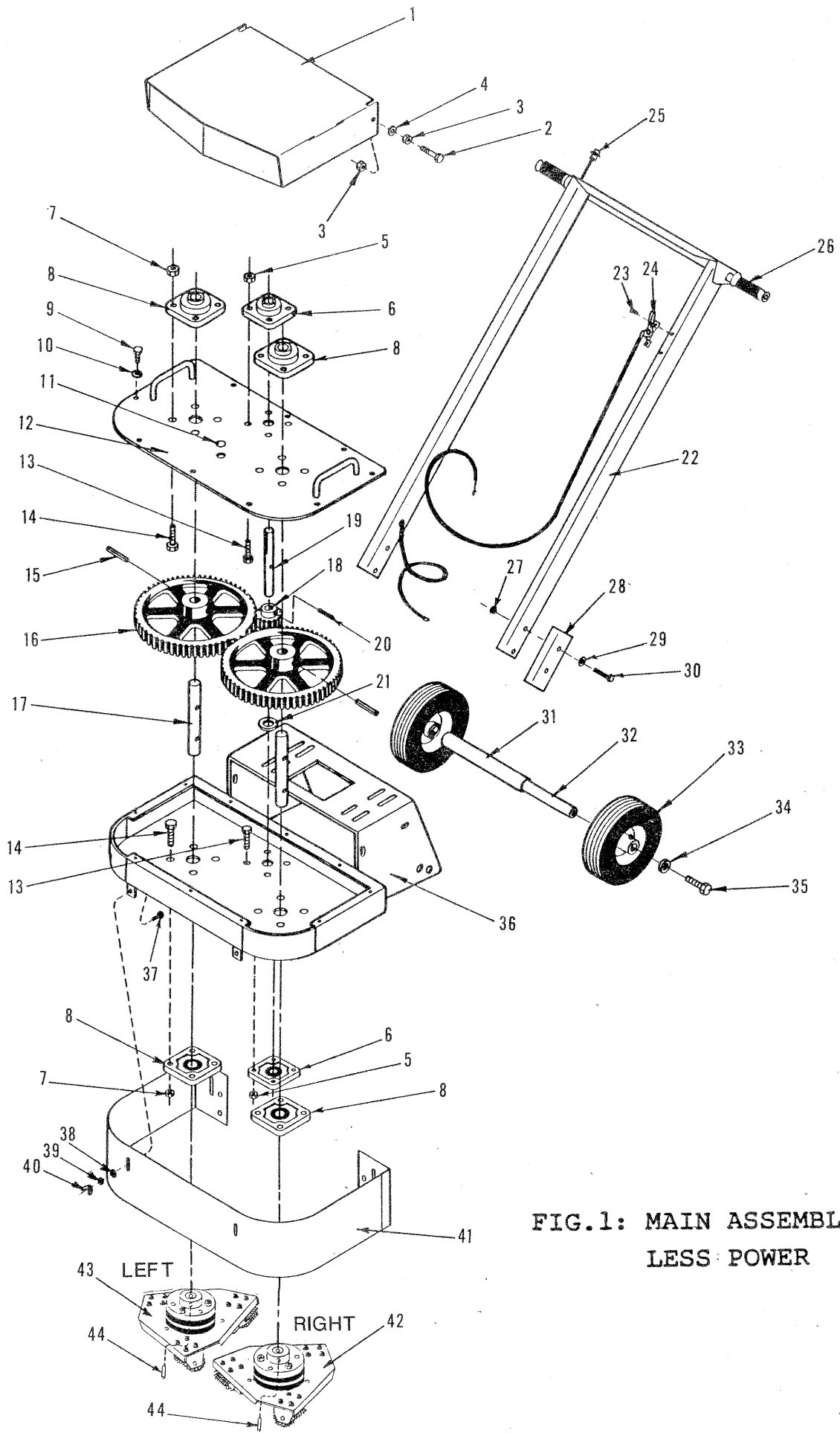


FIG.1: MAIN ASSEMBLY
LESS POWER

FIG. 1: MAIN ASSEMBLY LESS POWER

ITEM #	PART #	QTY.	DESCRIPTION	ITEM #	PART #	QTY.	DESCRIPTION
1.	77077	1	Hood	24.	3611	1	Throttle Cable (Gas Unit Only)
2.	10905	2	Screw, Cap 1/4-20 x 1-1/4	25.	50010	1	Stop Button (Gas Unit Only)
3.	10013	4	Nut, 1/4-20	26.	61108	2	Hand Grip
4.	10602	2	Washer, Flat 1/4	27.	10004	4	Locknut 3/8-24
5.	10004	8	Nut, Lock 3/8-24	28.	77103	2	Bracket, Handle Bar
6.	77009	2	Bearing 3/4"	29.	10025	4	Flatwasher 3/8
7.	10002	16	Nut, Lock 7/16-20	30.	10030	4	Screw, Cap 3/8-24 x 2
8.	77008	4	Bearing 1"	31.	77038	1	Axle Spacer
9.	10018	10	Screw, Cap 1/4-20 x 3/4	32.	77054	1	Axle Shaft
10.	10038	10	Washer, Lock 1/4	33.	79013	2	Wheel 8 x 2-1/2 x 3/4
11.	10005	1	Plug, Inspection	34.	10045	2	Washer, Lock 1/2
12.	77007	1	Cover, Gear Case	35.	10304	2	Screw, Cap 1/2-20 x 1
13.	10309	8	Screw, Cap 3/8-24 x 1-1/4	36.	77022	1	Gear Case and Frame Assy.
14.	10003	16	Screw, Cap 7/16-20 x 1-1/4	37.	10018	4	Screw, Cap 1/4-20 x 3/4
15.	10007	2	Pin, Roll 3/8 x 2-1/2	38.	10602	4	Flatwasher 1/4
16.	77012	2	Gear 112T, Driven	39.	10038	4	Lockwasher 1/4
17.	77013	2	Shaft 1", Gear	40.	10901	4	Wingnut 1/4-20
18.	77053	1	Gear 25T, Pinion	41.	74004	1	Guard (Skirt)
19.	77011	1	Shaft 3/4" Pinion	42.	2222	1	Disc Assy. Complete RH
20.	10037	1	Pin, Roll 1/4 x 1-1/2	43.	3333	1	Disc Assy. Complete LH (see Fig.3 for breakdown).
21.	10009	1	Washer, Flat 3/4	44.	10063	2	Pin Roll 3/8 x 2
22.	77102	1	Handle Bar				
23.	10828	2	Self-Tap Screw 10-24 x 1/2				

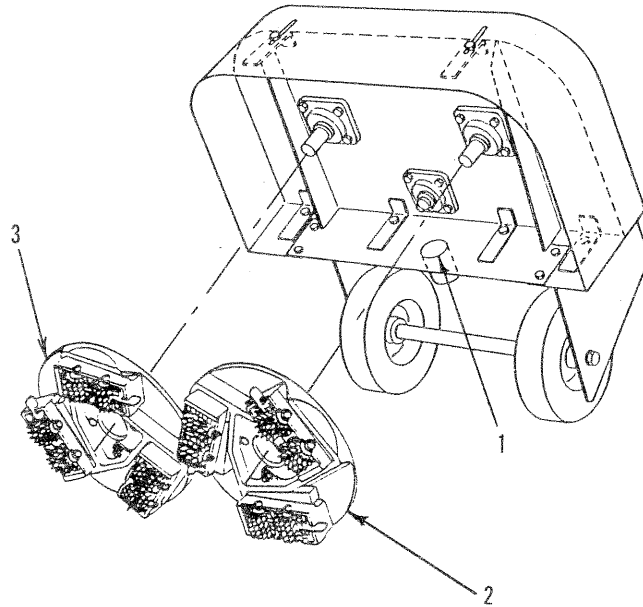


FIG. 2: OPTIONAL ACCESSORIES

ITEM #	PART #	DESCRIPTION
1.	77101	Vacuum Attachment
2.	8888	Multi-Accy. Disc Assy. Complete-RH
3.	9999	Multi-Accy. Disc Assy. Complete-LH

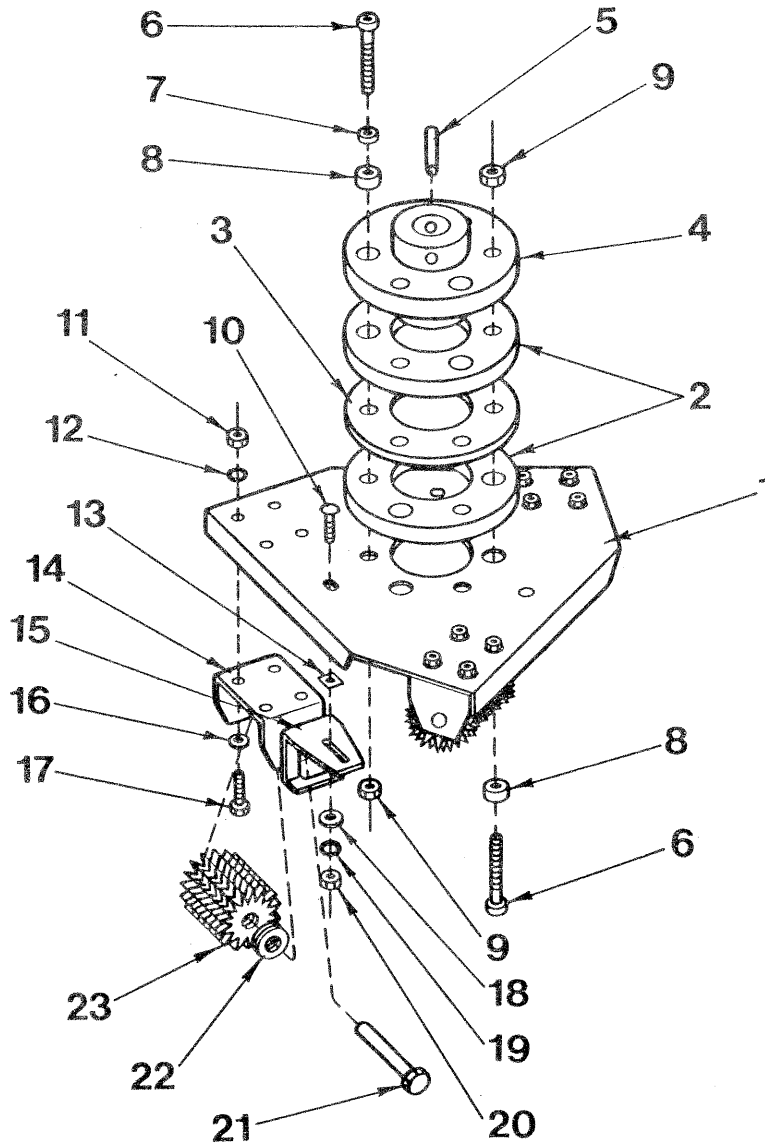


FIG. 3: SURFACER DISC ASSEMBLY

*2222 Disc Assy.Complete-RH

*3333 Disc Assy.Complete-LH

*Cutterwheels, Spacers, and Shafts not included with Disc Assemblies.

ITEM #	PART #	QTY.	DESCRIPTION	ITEM #	PART #	QTY.	DESCRIPTION
1.	77122	1	Disc, Right Hand	12.	10801	12	Washer, Lock 5/16
	77133	1	Disc, Left Hand	13.	10089	3	Speednut 3/8"
2.	10112	2	Neoprene Ring	14.	77074	3	Holder, Cutter Shaft
3.	77020	1	Carrier Ring	15.	77075	3	Retainer, Cutter Shaft
4.	77010S	1	Hub, Cast Iron	16.	10213	3	Washer, Flat 5/16 SAE
5.	10063	1	Roll Pin 3/8 x 2	17.	10806	3	Screw, Cap 5/16-18 x 1
6.	10114	6	S.H. Capscrew 3/8-24 x 2 1/4	18.	10025	3	Washer, Flat 3/8 SAE
7.	10113	3	Spacer 3/8 ID x 3/16	19.	10811	3	Washer, Lock 3/8
8.	10011	6	Spacer 3/8 ID x 3/8	20.	10404	3	Nut 3/8-16
9.	10063	6	Roll Pin 3/8 x 2	21.	77048	3	Cutter Shaft CG226(3 Per Disc)
10.	10802	2	Carr. Bolt 3/8-16 x 1	22.	12230	33	Spacer CG227(33 Per Disc)
11.	10054	12	Nut 5/16-18	23.	12206	24	Cutterwheel JRS-501(24 Per Disc)

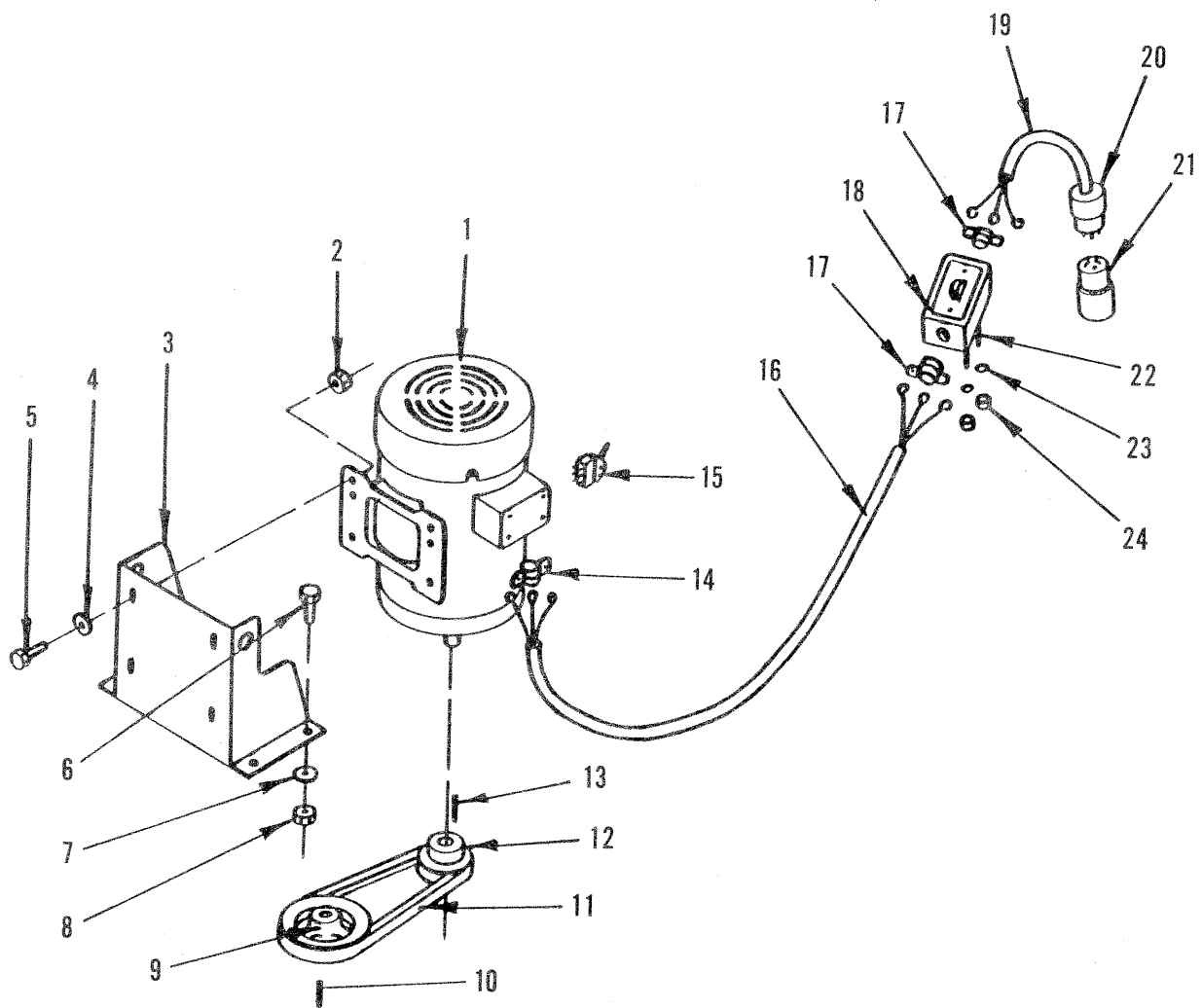


FIG.4: ELECTRIC POWER OPTION
1.5 H.P. BALDOR (1 Phase)

Item #	Part #	Qty.	Description	Item #	Part #	Qty.	Description
1.	76027	1	Motor, Baldor 1.5 HP-60HZ	14.	76001	1	Connector, Romex 3/4"
	76034	1	Motor, Baldor 1.5 HP-50HZ	15.	76002	1	Switch, Toggle DPDT
2.	10004	4	Nut, Lock 3/8-24	16.	10022	1	Wire Harness "B"
3.	77037	1	Motor Mount	17.	10032	2	Connector, Romex 3/8"
4.	10025	4	Washer, Flat 3/8	18.	77027	1	Switch & Box Assy.
5.	10021	4	Screw, Cap 3/8-24 x 1	19.	77026	1	Wire Harness "A"
6.	10021	4	Screw, Cap 3/8-24 x 1	20.	40042	1	Plug 20A/125V
7.	10025	4	Washer, Flat 3/8		40037	1	Plug 20A/250V
8.	10004	4	Nut, Lock 3/8-24	21.	40041	1	Plug Connector 20A/125V
9.	77056	1	Sheave 5"OD 1Gr.B 3/4"B		40000	1	Plug Connector 20A/250V
10.	10060	1	Key 3/16 Sq. x 1-1/4	22.	10315	2	Screw, Cap 1/4-20 x 1-1/2
11.	10051	1	Belt 5L-270	23.	10038	2	Washer, Lock 1/4
12.	77017	1	Sheave 3"OD 1Gr.B 7/8"B	24.	10013	2	Nut 1/4-20
13.	10016	1	Key 3/16 Sq. x 1-1/2				

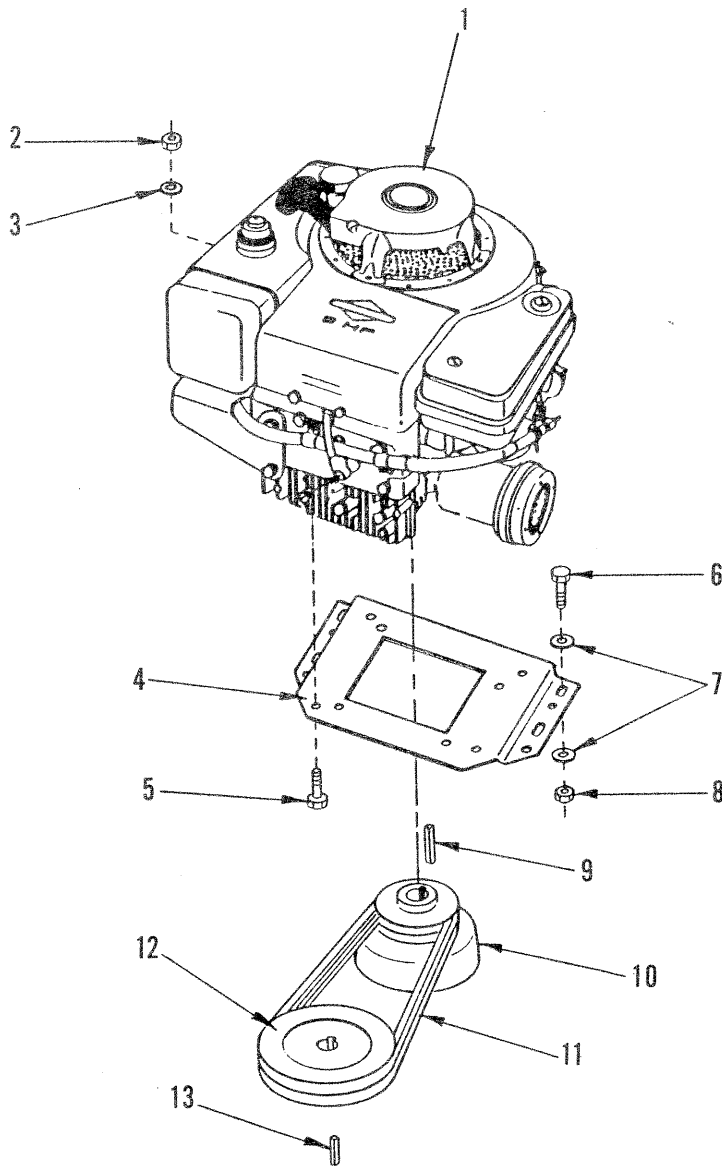


FIG. 5: GASOLINE POWER OPTION
8 H.P. BRIGGS & STRATTON I.C.

ITEM #	PART #	QTY.	DESCRIPTION
1.	76022	1	Engine, 8 H.P. B & S
2.	10054	4	Nut 5/16-18
3.	10801	4	Washer, Lock 5/16
4.	76023	1	Mount Bracket, Engine
5.	10606	4	Screw, Cap 5/16-18 x 1-1/4
6.	10021	4	Screw, Cap 3/8-24 x 1
7.	10025	8	Washer, Flat 3/8
8.	10004	4	Nut, Lock 3/8-24
9.	10017	1	Key 1/4 Sq. x 2-3/8
10.	76024	1	Clutch, Centrifugal
11.	10051	2	Belt 5L-270
12.	77058	1	Sheave 5"OD 2Gr.B 3/4"B
13.	10060	1	Key 3/16 Sq. x 1-1/4

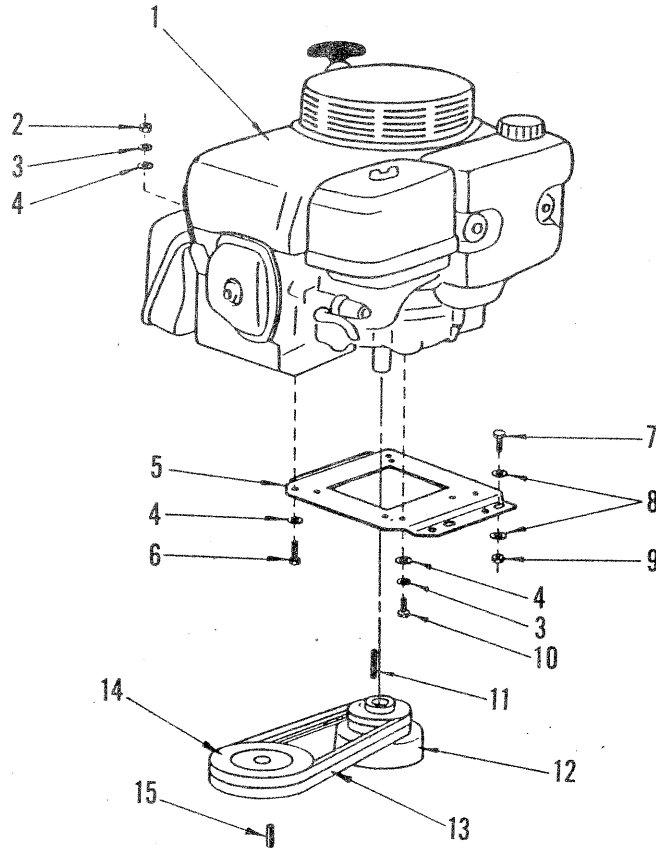


FIG. 6: GASOLINE POWER OPTION
11 H.P. HONDA GXV340

ITEM #	PART #	QTY.	DESCRIPTION
1.	76004	1	Engine, 11 H.P. Honda (GXV340)
2.	10054	2	Nut 5/16-18
3.	10801	4	Washer, Lock 5/16
4.	10213	6	Washer, Flat 5/16
5.	76023	1	Mount Bracket, Engine
6.	10606	2	Screw, Cap 5/16-18 x 1-1/4
7.	10021	4	Screw, Cap 3/8-24 x 1
8.	10025	8	Washer, Flat 3/8
9.	10004	4	Nut, Lock 3/8-24
10.	10048	2	Screw, Cap 5/16-24 x 3/4
11.	10017	1	Key 1/4 Sq. x 2-3/8
12.	76024	1	Clutch Centrifugal
13.	10051	2	Belt 5L-270
14.	77058	1	Sheave 5OD Gr.B 3/4B
15.	10060	1	Key 3/16 Sq. x 1-1/4

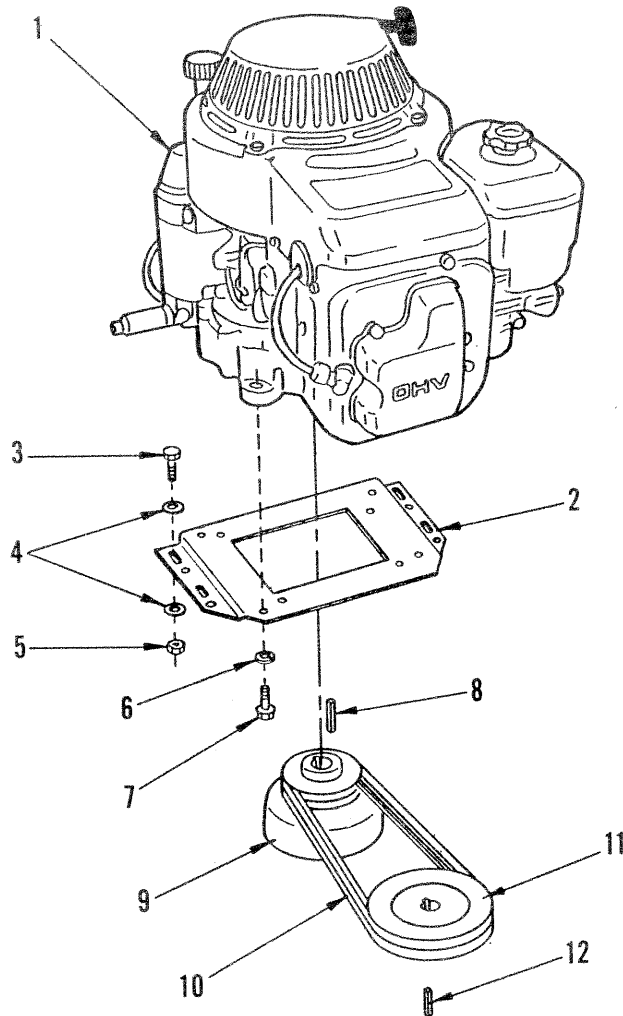


FIG. 7: GASOLINE POWER OPTION
9 H.P. KAWASAKI (FC290V)

ITEM #	PART #	QTY.	DESCRIPTION
1.	15019	1	Engine, 9 HP Kawasaki
2.	76023	1	Mount Bracket, Engine
3.	10021	4	Screw, Cap 3/8-24 x 1
4.	10025	8	Washer, Flat 3/8
5.	10004	4	Nut, Lock 3/8-24
6.	10801	4	Washer, Lock 5/16
7.	*NOTE	4	Screw, Cap M8 x 1.25 x 25 mm
8.	10017	1	Key 1/4 Sq. x 2-3/8
9.	76024	1	Clutch, Centrifugal
10.	10051	2	Belt 5L-270
11.	77058	1	Sheave 5"OD 2Gr.B 3/4"Bore
12.	10060	1	Key 3/16 Sq. x 1-1/4

*NOTE: Included with engine.