

PART # 65136

MOTOR & ROTARY SWITCH KIT

CONVERSION
FOR

Model CPM8

5HP 230V 1-PHASE

WALK BEHIND SCARIFIER

This kit is for units that need the motor replaced and the motor did not have a thermal overload on it. Baldor Cat. No. L3608T or Leeson Cat. No. 131549. It converts the unit to a new Baldor Cat. No. L3608TM motor with a thermal overload and a rotary cam switch in place of a starter only system or a reset starter with a remote switch type system.

PARTS LIST AND WIRING DIAGRAM

TABLE OF CONTENTS

| | <u>Page</u> |
|-------------------------------------|---------------|
| Illustration for 2-Box System | 2 |
| Parts Listing | 3 |
| Wiring Diagram | 4 (Back Page) |



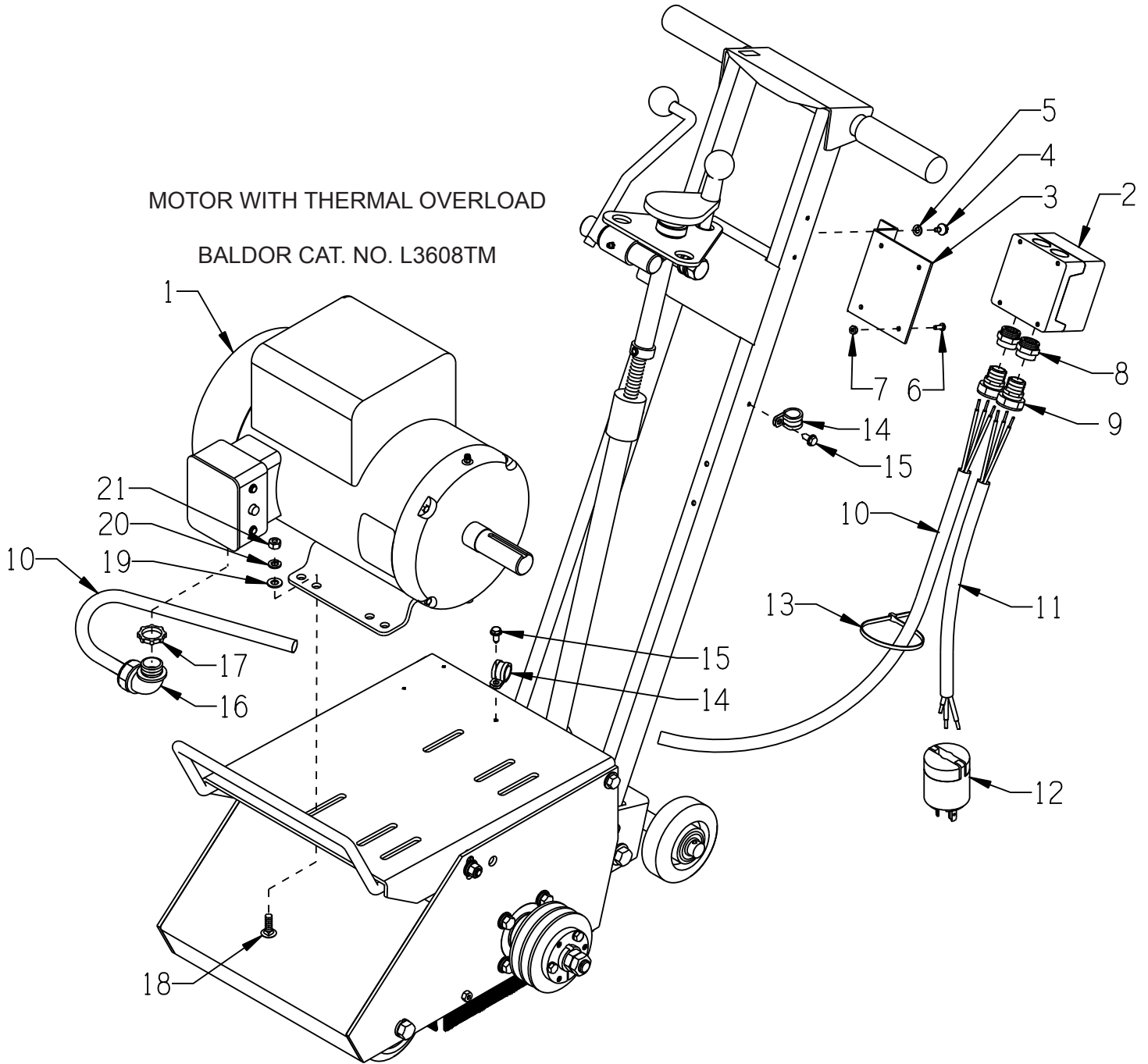
A Division of Equipment Development Company, Inc.

100 Thomas Johnson Drive, Frederick, MD 21702-4600 USA
 Phone (301) 663-1600 • 1-800-638-3326
 Fax (301) 663-1607 • 1-800-447-3326
 Website: www.edcoinc.com
 Email: sales@edcoinc.com

Printed in USA

JWA ©2012

ILLUSTRATION FOR KIT



| PARTS LISTING FOR 65136 MOTOR & ROTARY SWITCH KIT | | | |
|---|--------------|---|----------|
| ITEM # | PART # | DESCRIPTION | QTY. |
| 1 | 81026 | MOTOR, BALDOR 5HP-1PH 60HZ 3450RPM | 1 |
| | | REPLACEMENT PARTS: | |
| | 16121 | CAPACITOR, START, BALDOR EC1161C06SP | 2 |
| | 16164 | CAPACITOR, RUN, BALDOR #OC3040F09SP | 1 |
| | 16540 | THERMAL PROT. (RESET BUTTON) TPBRT25DB | 1 |
| 2 | 77043 | SWITCH, ROTARY CAM ON/OFF | 1 |
| 3 | 77042 | BRACKET, ROTARY CAM SWITCH | 1 |
| 4 | 10846 | SCREW, CAP STSHW 1/4-20 X 1/2 | 2 |
| 5 | 10038 | WASHER, LOCK 1/4 ZINC | 2 |
| 6 | 11663 | SCREW, MACHINE 8-32 X 1/2 (LOCATED INSIDE OF SWITCH BOX) | 4 |
| 7 | 10462 | NUT, KEPS LOCK 8-32 ZINC | 4 |
| 8 | 77043-1 | SWITCH ADAPTER, PG16 TO 1/2"NPT | 2 |
| 9 | 41130 | STRAIN RELIEF 1/2NPT X .550-.650" | 2 |
| 10 | 65137 | WIRE HARNESS 10/3 X 60"LOA | 1 |
| 11 | 86026 | WIRE HARNESS 10/3 X 24"LOA | 1 |
| 12 | 40037 | PLUG, LOCKING 20A/250V L6-20P | 1 |
| 13 | 10982 | TIE, CABLE, BLACK NYLON 11-1/4" | 2 |
| 14 | 11565 | CLAMP, LOOM, 5/8" (SAE SIZE 10) | 2 |
| 15 | 10877 | SCREW, CAP STSHW 10-24 X 1/2 | 2 |
| | 10831 | WASHER, LOCK, INT. TOOTH #10 | 2 |
| 16 | 16539 | STRAIN RELIEF 90D X 3/4NPT .50-.625 | 1 |
| 17 | 10740 | CONDUIT LOCK NUT 3/4 NP (LOCATED INSIDE OF JUNCTION BOX) | 1 |
| 18 | 10819 | BOLT, CARRIAGE 5/16-18 X 1 FULL THD | 4 |
| 19 | 10213 | WASHER, FLAT 5/16 SAE ZINC | 4 |
| 20 | 10801 | WASHER, LOCK 5/16 ZINC | 4 |
| 21 | 10054 | NUT, HEX 5/16-18 ZINC | 4 |



A Division of Equipment Development Company, Inc.

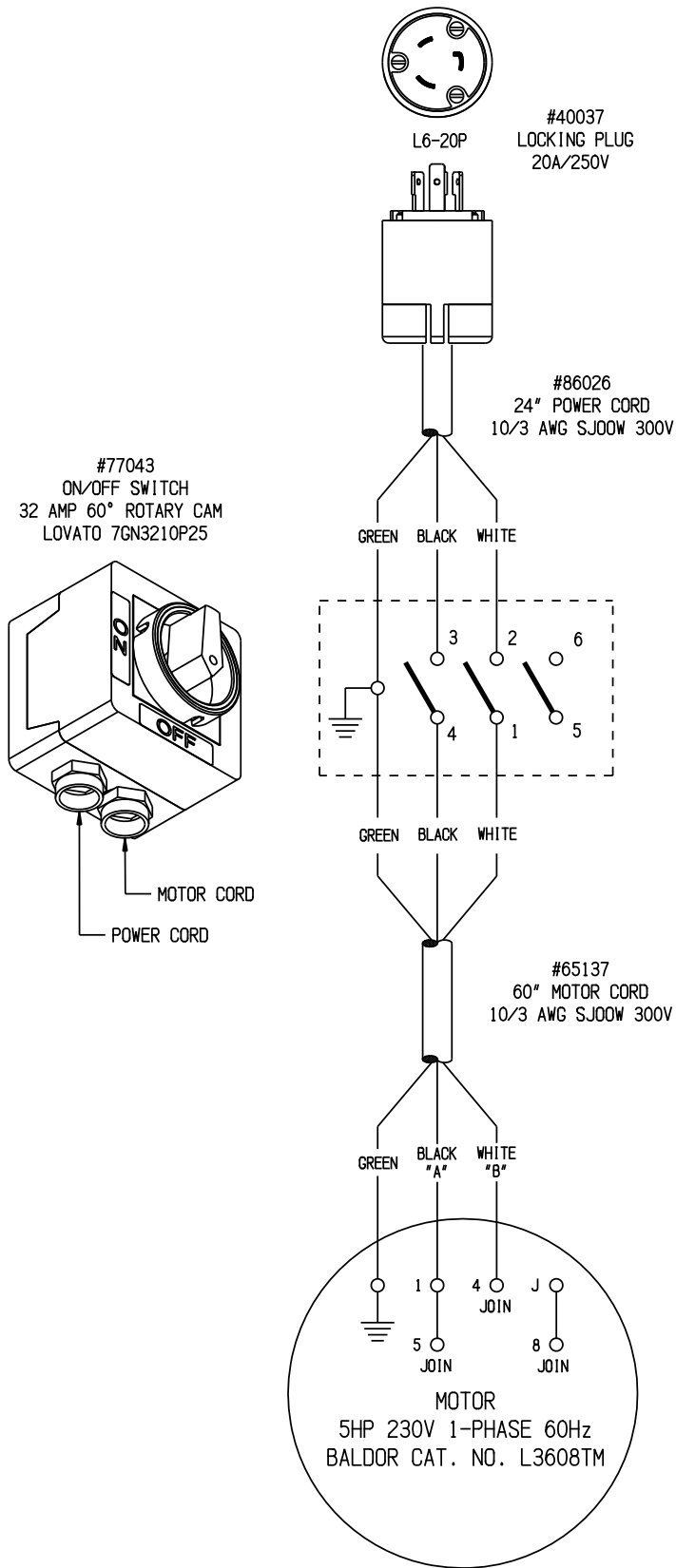
100 Thomas Johnson Drive, Frederick, MD 21702-4600 USA
 Phone (301) 663-1600 • 1-800-638-3326
 Fax (301) 663-1607 • 1-800-447-3326
 Website: www.edcoinc.com
 Email: sales@edcoinc.com

Printed in USA

JWA ©2012

Page 3

WIRING DIAGRAM



65136 Motor & Rotary Switch Kit Conversion

Installation Instructions

1. Remove belt cover.
2. Loosen motor mount and remove belts.
3. Remove motor and reset box mount and discard.
4. Remove old switch box, reset box and wiring and discard.
5. Install new motor as shown in diagram.
6. Use shorter bolts, #18, supplied.
7. Route wiring along handle leg to get rotary switch box up to top of handle left leg.
8. Align bracket, #3, on the back of the left leg of handle and drill 2 mounting holes. Drill size is 7/32".
9. Mount rotary switch with 1/4-20 self tapping screws.
10. Secure wiring as shown in diagram.
11. Install belts. Align & tighten motor and mount.
12. Install belt cover.
13. Test

Remember to disconnect machine from power source during installation.