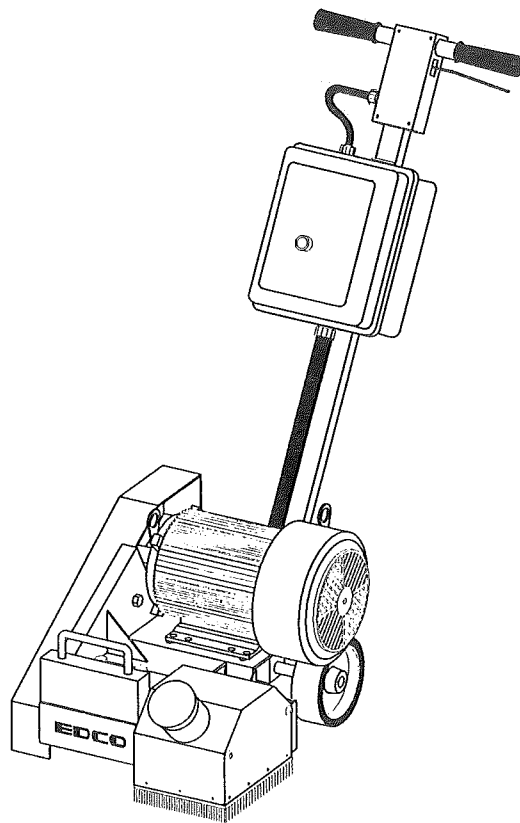


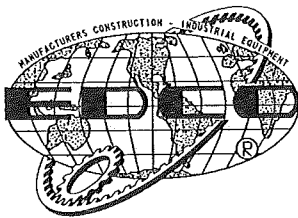
REVISED MARCH 1995
STARTING SERIAL NO. 9862

LIGHT WEIGHT "KNOCK-DOWN" STYLE COMPACT PLANER

PARTS LIST MANUAL



Models CPM4-5US, CPM4-5K, CPM4-A5G



EQUIPMENT DEVELOPMENT COMPANY, INC.

100 THOMAS JOHNSON DRIVE, FREDERICK, MARYLAND 21702-4305 USA

PHONE (301) 663-1600

TOLL FREE 1-800-638-3326

FAX (301) 663-1607

FAX FREE 1-800-447-3326

PRINTED IN U.S.A.



IMPORTANT SAFETY INSTRUCTIONS

*** READ AND SAVE ***



NOTICE

For your own safety, read thoroughly and understand all instructions before attempting to operate this equipment.

GASOLINE POWERED EQUIPMENT:



The engine exhaust from this product contains chemicals known, in certain quantities, to cause cancer, birth defects or other reproductive harm.



Do not operate gasoline powered equipment without adequate ventilation. Carbon monoxide is an invisible, odorless gas that can kill.

ELECTRIC POWERED EQUIPMENT:



ELECTRICAL HAZARD - Be sure equipment is properly grounded. Failure to comply could kill or result in serious injury.

PLEASE FILL IN INFORMATION AND SAVE

Date of Purchase	_____
Name of Machine	_____
Model #	_____
Serial #	_____
Belt Size(s)	_____

HOW TO ORDER REPAIR PARTS

IMPORTANT!:

To assure product SAFETY and RELIABILITY, use only EDCO replacement parts when making repairs to the equipment.

When ordering parts, please specify the MODEL and SERIAL NUMBER of the machine as given on the NAME PLATE. In addition, give part number, description, and quantity as listed on parts list.

Please note:

Due to improvements and changes in the equipment, the illustrations shown may be different than the actual machine. All parts are subject to change without notice or obligation.

TABLE of CONTENTS

IMPORTANT SAFETY INSTRUCTIONS.....	1
HOW TO ORDER REPAIR PARTS.....	1
DIMENSIONS.....	2

PARTS LIST:

ILLUSTRATION 1: MAIN GROUPING.....	3
ILLUSTRATION 2: CUTTER WHEEL DRUM ASSEMBLY.....	5
ILLUSTRATION 3: FLAIL DRUM ASSEMBLY.....	6
ILLUSTRATION 4: ROTO-PEEN FLAP HUB ASSEMBLY.....	7
ILLUSTRATION 5: ACCESSORY HUB.....	8
ILLUSTRATION 6: DIAMOND GROOVING HEAD ASSEMBLY.....	9
ILLUSTRATION 7: BELT & DRIVE SHAFT GROUPING.....	10
ILLUSTRATION 8: ELECTRIC MOTOR GROUPING MODEL CPM4-5US.....	11
ILLUSTRATION 9: STARTER SWITCH ASSEMBLY MODEL CPM4-5US.....	13
ILLUSTRATION 10: ENGINE GROUPING - MODEL CPM4-5K.....	14
ILLUSTRATION 11: AIR MOTOR GROUPING - MODEL CPM4-A5G..	15
ILLUSTRATION 12: AIR VALVE ASSEMBLY - MODEL CPM4-A5G..	17
WARRANTY.....	BACK PAGE

* * * * *

DIMENSIONAL SPECIFICATIONS

* MODEL CPM4-5US SHOWN

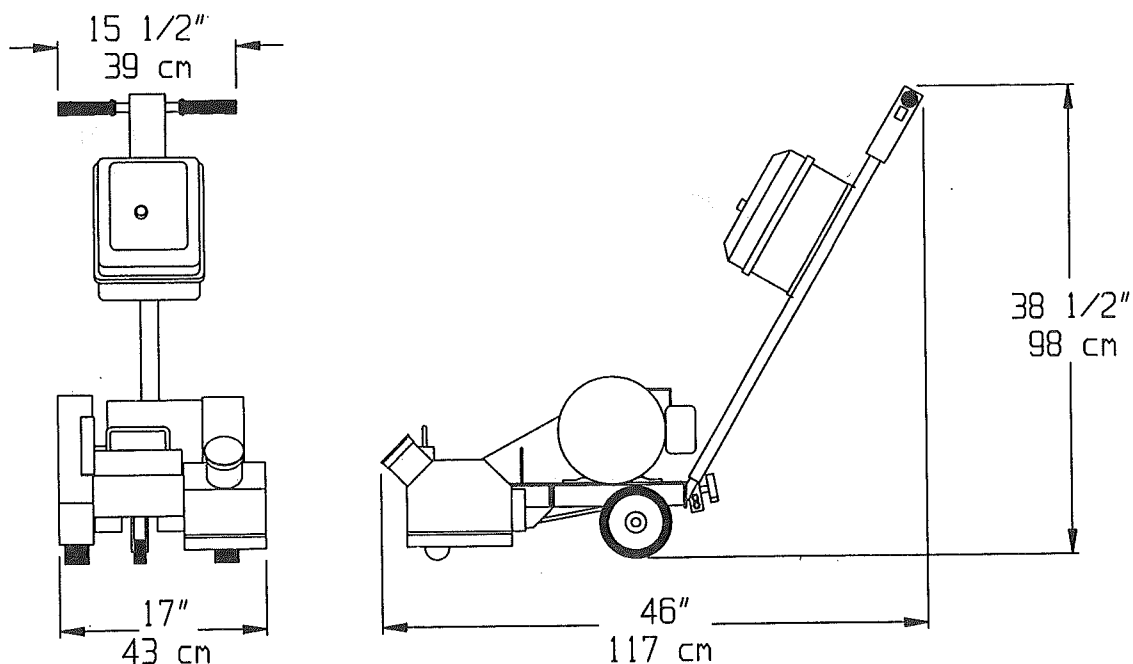
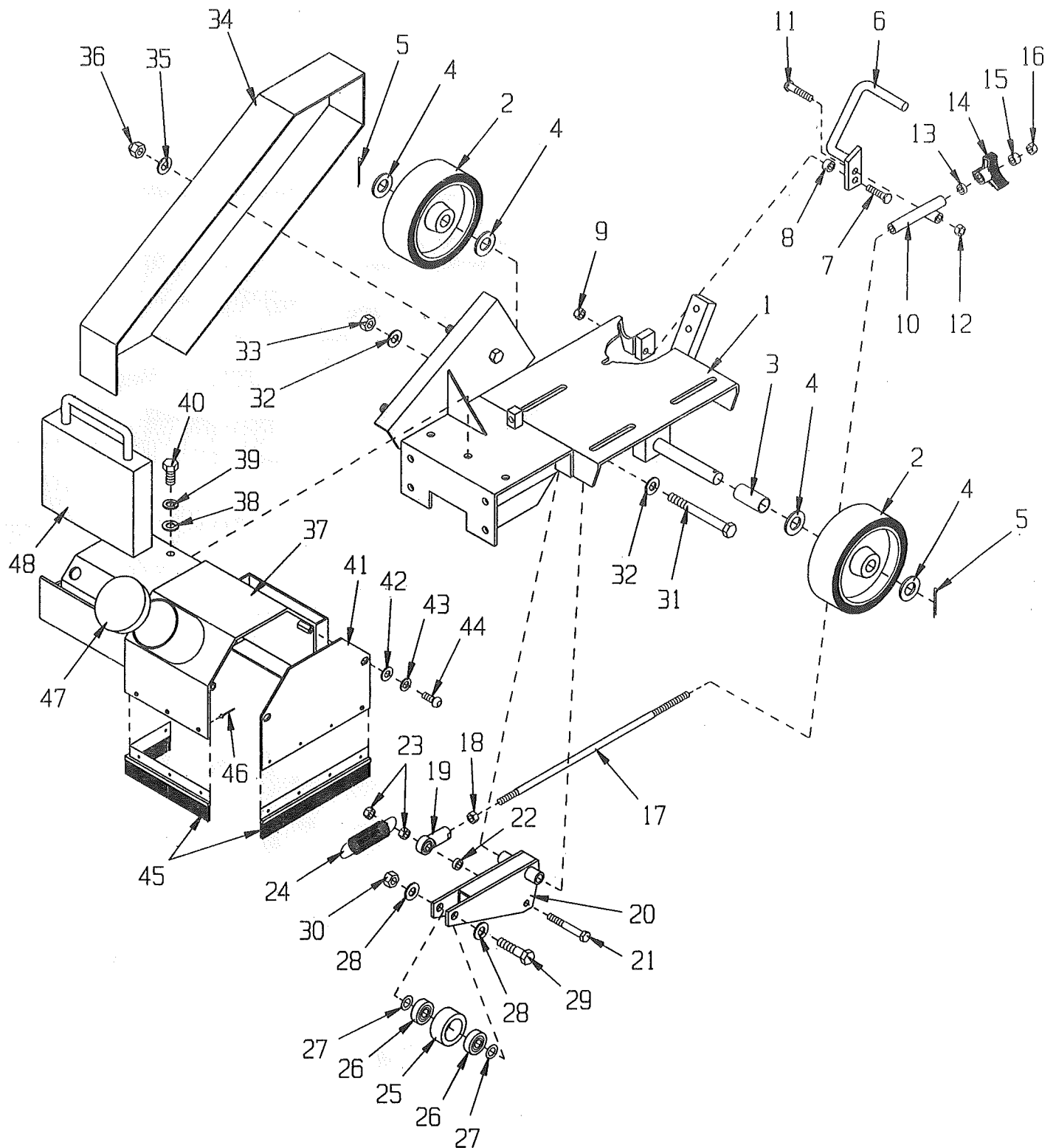


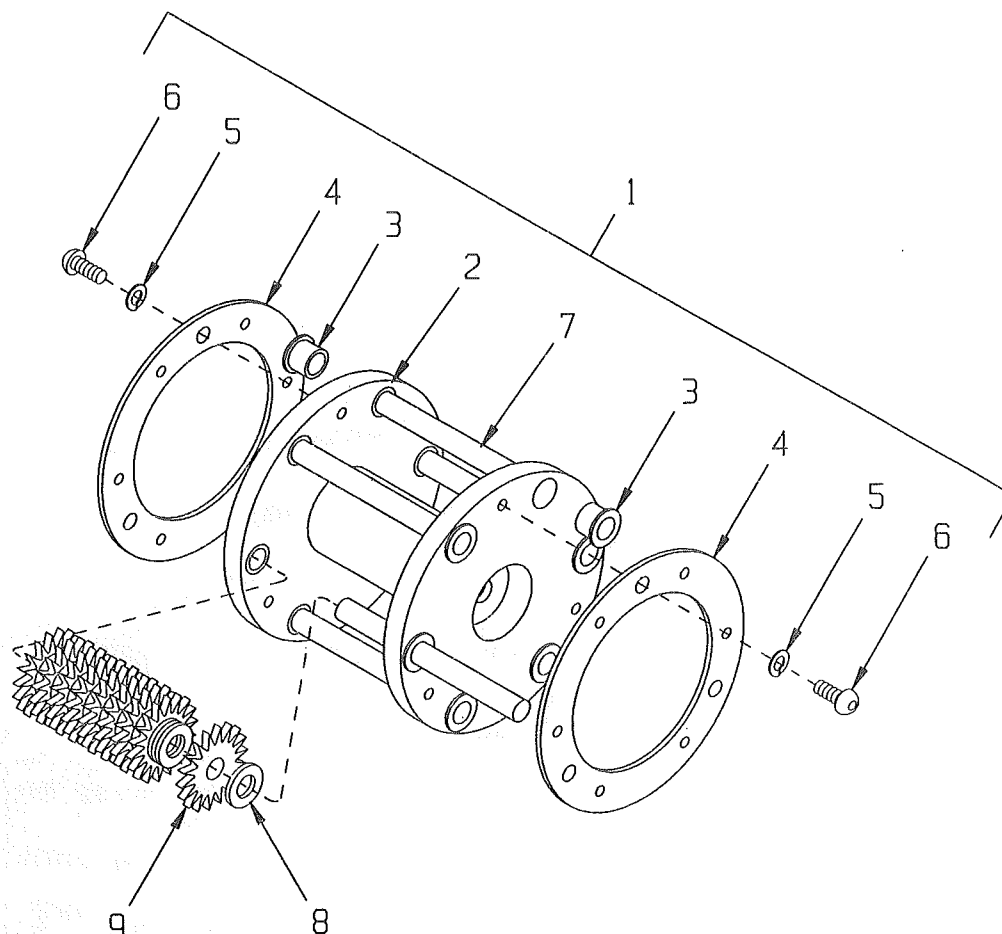
ILLUSTRATION 1: MAIN GROUPING



PARTS LISTING - ILLUSTRATION 1: MAIN GROUPING

Item #	Part #	Description	Qty.
1	C66001	Main Frame	1
2	50030	Wheel, Alum. 6 x 2 x 3/4" Brg.	2
3	C66002	Spacer, Rear Wheel	1
4	10009	Washer, Flat 3/4	4
5	10306	Pin, Cotter 3/16 x 1-1/2	2
6	C66003	Lever, Fork Disengage	1
7	C66022	Screw, Lever 3/8-24 x 1-1/2 (Special)	1
8	10011	Spacer, Steel 5/8"OD x 3/8"ID x 3/8"W	1
9	10004	Nut, Lock 3/8-24	1
10	C66004	Linkage Support	1
11	C66023	Screw, Lever 3/8-24 x 1-3/4 (Special)	1
12	10004	Nut, Lock 3/8-24	1
13	10113	Spacer, Steel 9/16"OD x 3/8"ID x 7/32"W	1
14	80011	Knob, Star 3/8-16	1
15	10011	Spacer, Steel 5/8"OD x 3/8"ID x 3/8"W	1
16	10404	Nut 3/8-16	1
17	C66005	Linkage Rod 3/8" x 15"L	1
18	10014	Nut 3/8-24	1
19	10919	Rod End, Female 3/8-24	1
20	C66006	Fork, Front Wheel	1
21	10815	Screw, Cap 3/8-24 x 2-3/4	1
22	10113	Spacer, Steel 9/16"OD x 3/8"ID x 7/32"W	1
23	10004	Nut, Lock 3/8-24	2
24	50074	Spring, Ext. 1"OD x 3-15/16" Inside Ends	1
25	C66007	Wheel, Steel 2"Dia.	1
26	3659	Bearing, Radial Ball 1/2 x 1-3/8 x 7/16	2
27	10040	Washer, Garret 17/32	2
28	10312	Washer, Flat 1/2	2
29	10322	Screw, Cap 1/2-20 x 2	1
30	10205	Nut, Lock 1/2-20	1
31	10329	Screw, Cap 1/2-20 x 6	1
32	10312	Washer, Flat 1/2	2
33	10205	Nut, Lock 1/2-20	1
34	C66016	Cover, Belt	1
35	10045	Washer, Lock 1/2	2
36	10865	Nut, Acorn 1/2-13	2
37	C66017	Cover, Front	1
38	10025	Washer, Flat 3/8	3
39	10811	Washer, Lock 3/8	3
40	10907	Screw, Cap 3/8-16 x 3/4	3
41	C66018	Cover, Drum Side Access	1
42	10213	Washer, Flat 5/16	2
43	10801	Washer, Lock 5/16	2
44	10627	Screw, Skt. Button Head 5/16-18 x 3/4	2
45	66019	Brushes (Set Of 3)	1
46	12113	Rivet, Blind 3/16 x .440"L x .375HD.Dia.	11
47	64030	Plug, Cap 3"	1
48	C66021	Weight Block	1

ILLUSTRATION 2: CUTTER WHEEL DRUM ASSEMBLY

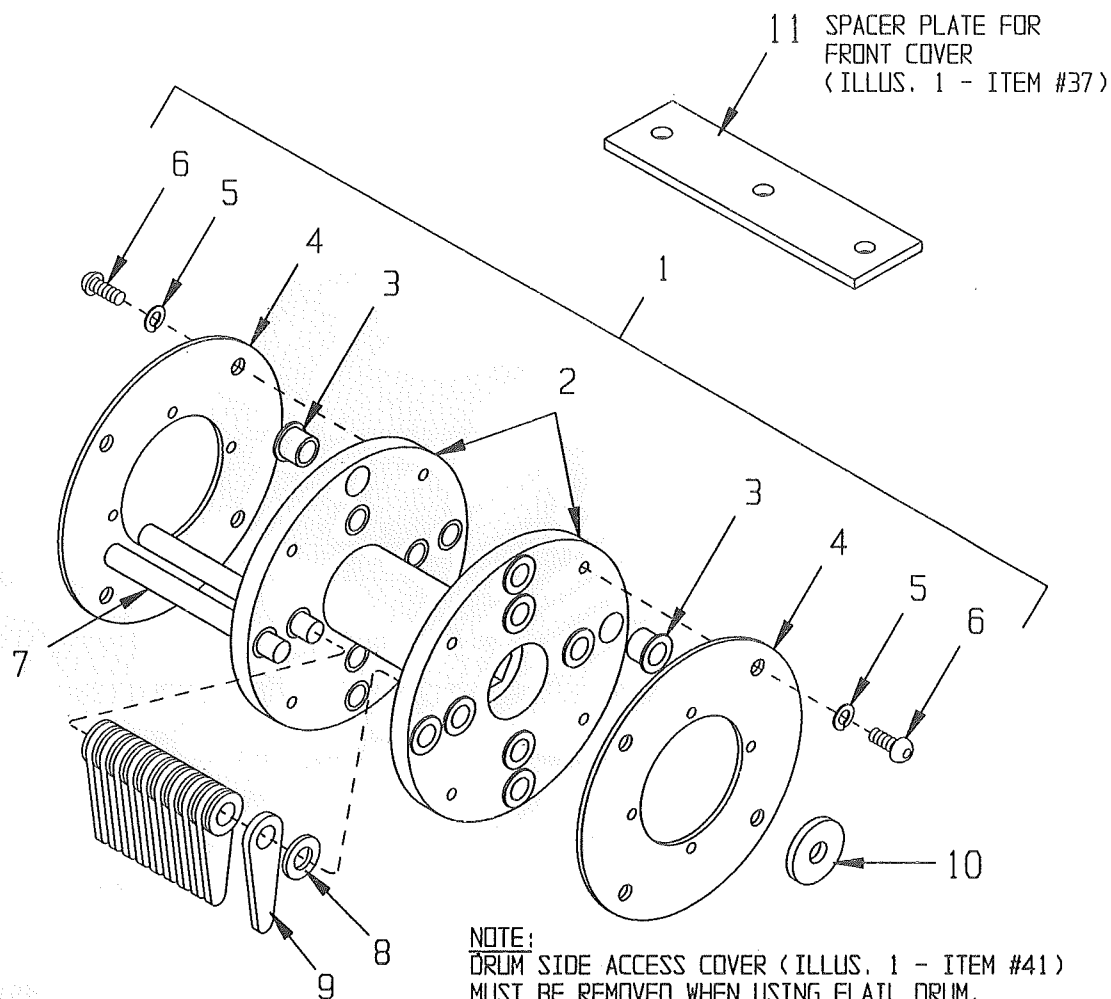


Item #	Part #	Description	Qty.
1	C66040	Drum Assembly Complete (Includes Items 2 thru 7)	
2	C66041	Drum Only, Cutter	1
3	65055	Bushing, Drum, Hardned Steel 1/2"ID	12
4	65054	Retaining Plate, Cutter Shaft	2
5	10801	Washer, Lock 5/16	6
6	10627	Screw, Skt. Button Head 5/16-18 x 3/4	6
7	C66043	CP410 Shaft 1/2 x 5-1/4"L	6
8	12230	CG227 Spacer 1/2"I.D.	*
9		Cutter Wheel	*
	12206	JRS501-P Pointed High-Carbon Steel	
	20206	CP-305 Flat Tip Hi-Carbon Steel	
	20156	CP-206-T Tungsten Carbide	

*** NOTE:**

Cutter Wheels, Spacers, and Shafts are not included with Drum Assembly.
The number of Cutter Wheels and Spacers vary with type of set-up used.
Refer to Assembly Instructions for suggested set-ups and quantities.

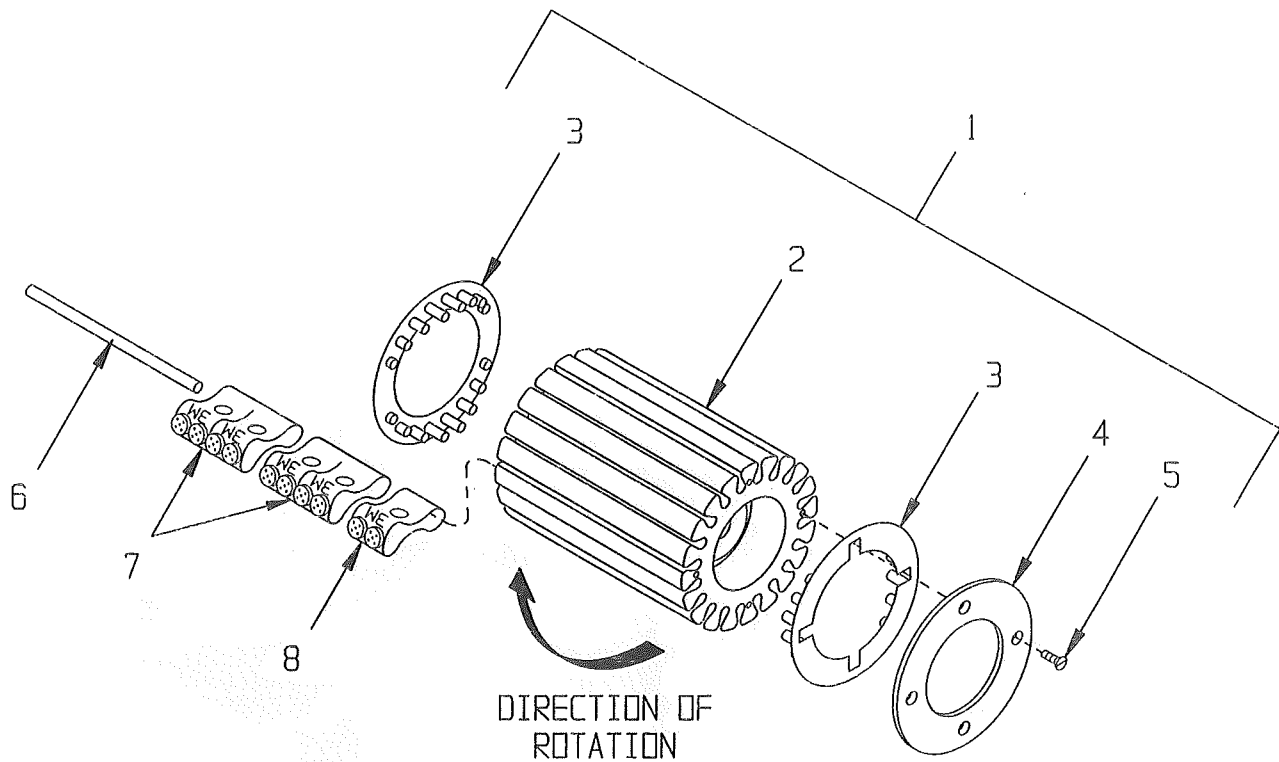
ILLUSTRATION 3: FLAIL DRUM ASSEMBLY



Item #	Part #	Description	Qty.
1	C66080	Drum Assembly Complete, Flail (Includes Items 2 thru 6)	
2	C66081	Flail Drum Only	1
3	65055	Bushing, Drum, Hardened Steel 1/2"ID	16
4	C66082	Retaining Plate	1
5	10801	Washer, Lock 5/16	8
6	10627	Screw, Skt. Button Head 5/16-18 x 3/4	8
7	C66043	CP410 Shaft 1/2 x 5-1/4"L	8*
8	12230	CG227 Spacer 1/2"ID	84*
9	20276	Flail	38*
10	C66011	Washer, Drum Retaining	1
11	C66083	Spacer Plate 1/4"Thk	1

* NOTE:
Flails, Spacers, and Shafts are not included with Drum Assembly.
The number of Flails and Spacers vary with type of set-up used.
Refer to Assembly Instructions for Suggested set-ups and quantities.

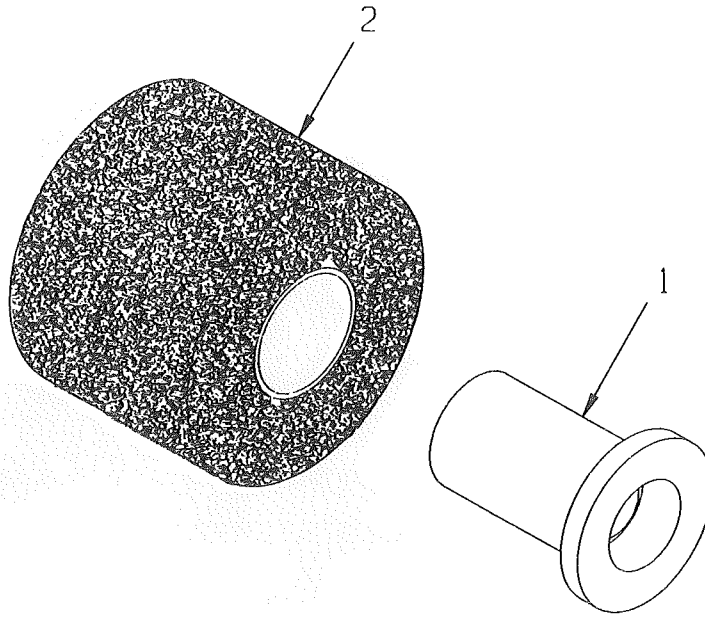
ILLUSTRATION 4: ROTO-PEEN FLAP HUB ASSEMBLY



Item #	Part #	Description	Qty.
1	C66050	Hub Assembly Complete, Roto-Peen (Includes Items 2 thru 5)	1
2	C66051	Hub Only 5-1/2"	2/Set
3	25060	Spacer Ring	1
4	C66052	Retaining Plate	4
5	10628	Screw, Flat Hd. 8-32 x 1/2	20/Set
6	C66054	Pin, Keeper 5"	*
7	25020 25021 25022	Roto-Peen Flap 2" Type B Type C Type D	
8	-----	Roto-Peen Flap 1" (Cut 2" Flap in Half)	*

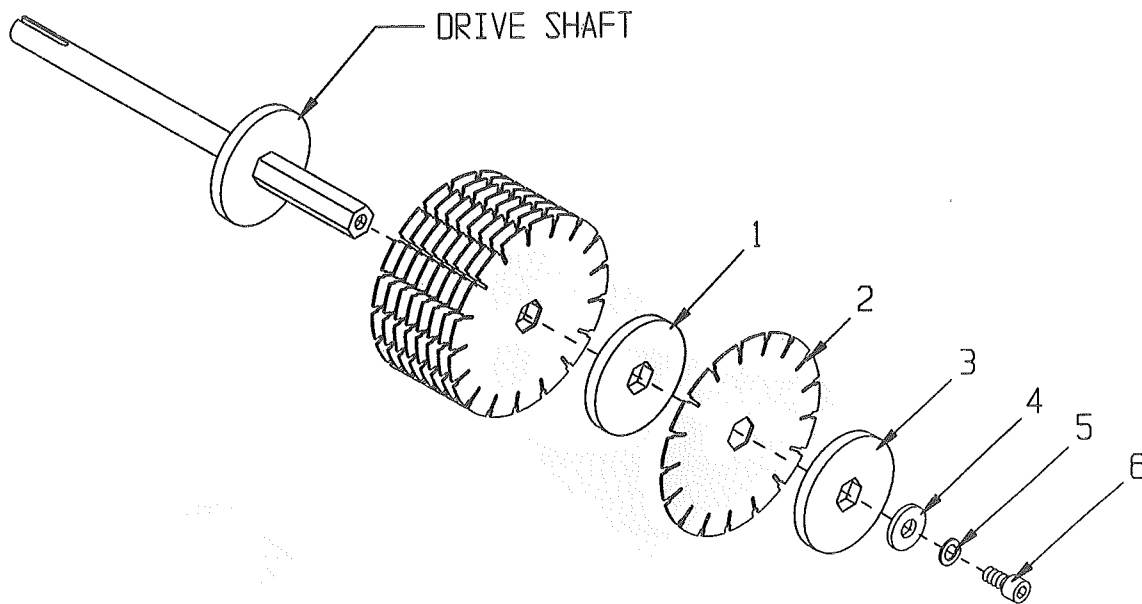
* NOTE:
Flaps are not included with Hub Assembly.
Number of Flaps vary with type of set-up used.
Refer to Assembly Instructions for suggested flap types and quantities.

ILLUSTRATION 5: ACCESSORY HUB



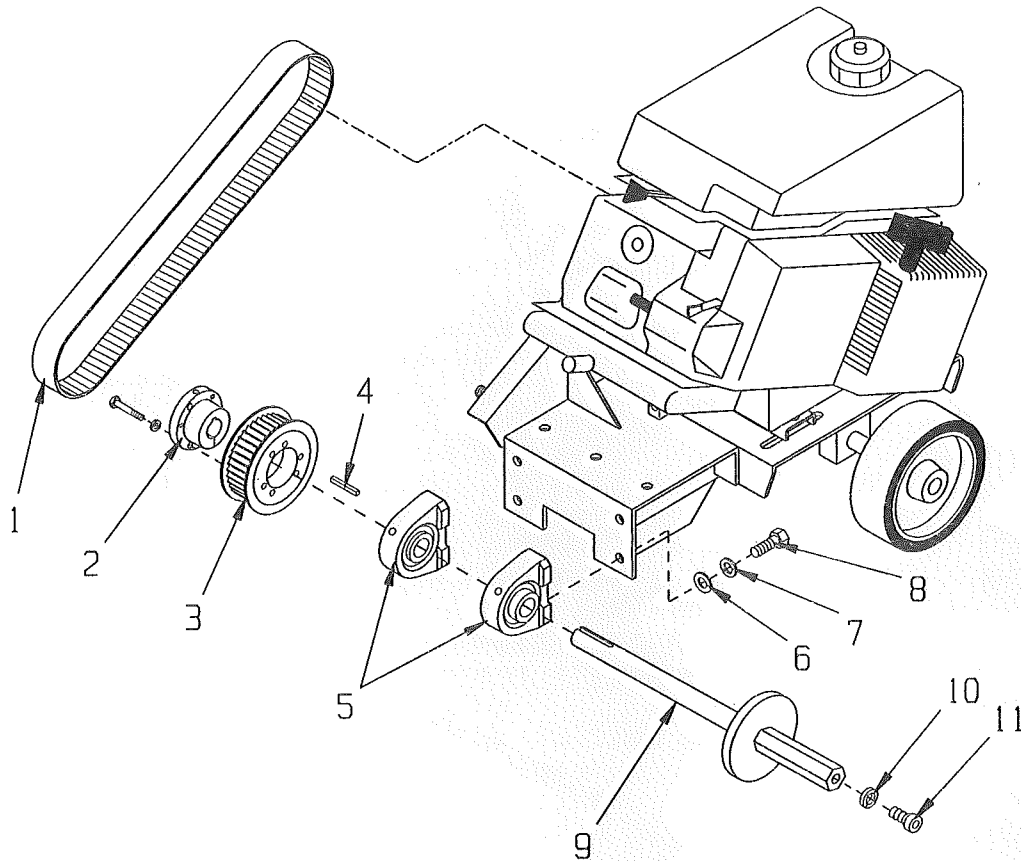
Item #	Part #	Description	Qty.
1	C66060	Hub	1
2	C66066	Brush Wheel, Silicon-Carbide 7"Dia. x 5-1/2"W	1

ILLUSTRATION 6: DIAMOND GROOVING HEAD ASSEMBLY



Item #	Part #	Description	Qty.
1	65084 65083 65082	Spacer, Blade 4"O.D. x 1"Thk. x 1" Hex 4"O.D. x 1/2"Thk. x 1" Hex 4"O.D. x .063"Thk. x 1" Hex	*
2	39805	DCC-05S Diamond Blade 7"Dia. x .090"Thk. x 1" Hex	*
3	65083	Cap, Blade Retaining (Same as 1/2"Thk. Spacer)	1
4	C66011	Washer, Drum Retaining	1
5	10420	Washer, Lock Heavy Duty 1/2	1
6	10419	Screw, Skt. Hd. Cap 1/2-13 x 1	1
<p>* NOTE: Diamond Blades and Spacers are not included with Head Head Assembly. The quantities vary with the type of set-up used.</p>			

ILLUSTRATION 7: BELT & DRIVE SHAFT GROUPING



Item #	Part #	Description	Qty.
1	10270	Belt, HTD 1040-8M-30	1
2	10546	Bushing, Sheave SH x 7/8" Bore	1
3	C90052	Sprocket, HTD P38-8M-30-SH	1
4	10016	Key 3/16" Sq. x 1-1/2	1
5	C66013	Bearing, Ball 7/8" TPB	2
6	10025	Washer, Flat 3/8	4
7	10811	Washer, Lock 3/8	4
8	10907	Screw, Cap 3/8-16 x 3/4	4
9	C66012	Drive Shaft, Drum	1
10	10420	Washer, Lock 1/2 Heavy-Duty	1
11	10419	Screw, Skt. Hd. Cap 1/2-13 x 1	1

This technical drawing is an exploded view of a mechanical assembly, likely a motor-driven device. The components are numbered as follows:

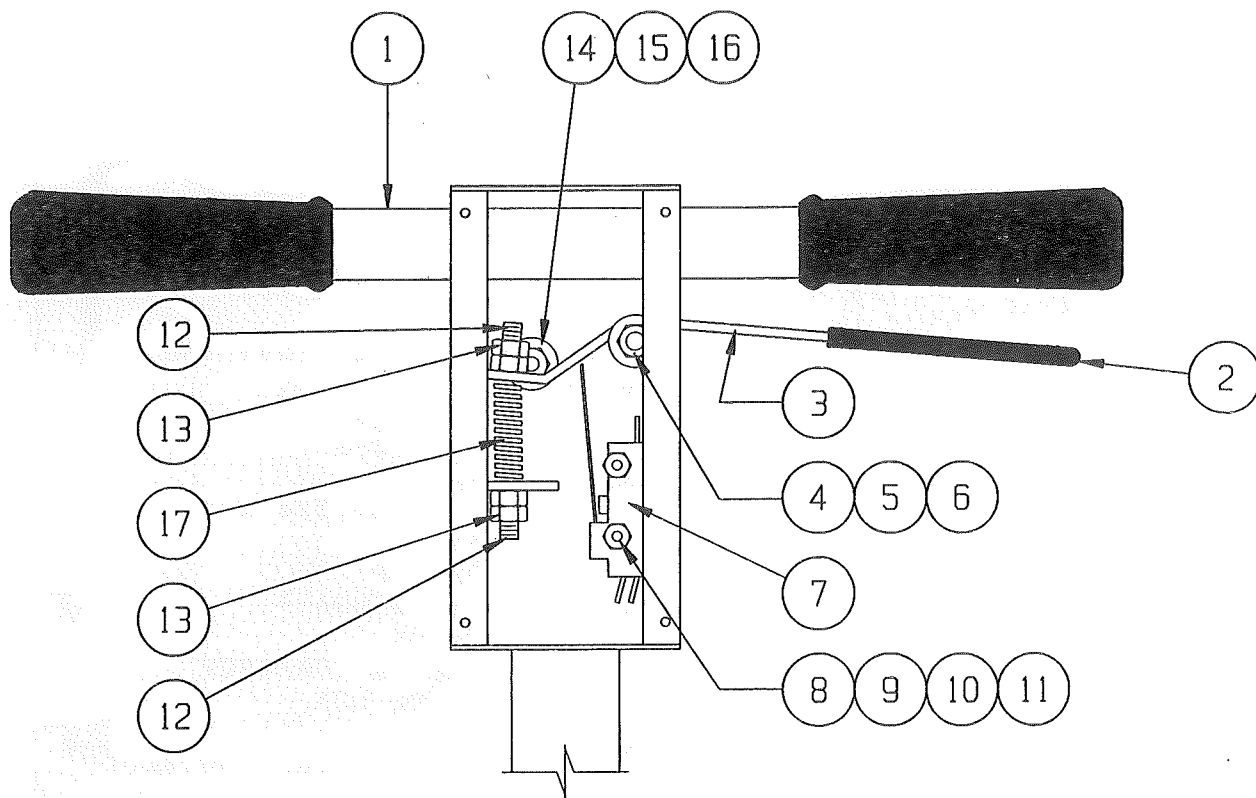
- 1**: Main cylindrical motor body.
- 2**: Small screw/bolt at the base.
- 3**: Small screw/bolt at the base.
- 4**: Small screw/bolt at the base.
- 5**: Small screw/bolt at the base.
- 6**: Small screw/bolt at the base.
- 7**: Base plate.
- 8**: Base plate.
- 9**: Gear/pulley component.
- 10**: Gear/pulley component.
- 11**: Gear/pulley component.
- 12**: Small screw/bolt.
- 13**: Small screw/bolt.
- 14**: Cable with a connector.
- 15**: Small cylindrical component.
- 16**: Small cylindrical component.
- 17**: Cable with a connector.
- 18**: Rectangular component, possibly a control box.
- 19**: Small screw/bolt.
- 20**: Small screw/bolt.
- 21**: Small screw/bolt.
- 22**: Small screw/bolt.
- 23**: Small screw/bolt.
- 24**: Cable with a connector.
- 25**: Cable with a connector.
- 26**: Small screw/bolt.
- 27**: Small screw/bolt.
- 28**: Small screw/bolt.
- 29**: Small cylindrical component.
- 30**: Small screw/bolt.
- 31**: Cable with a connector.
- 32**: Cable with a connector.
- 33**: Small cylindrical component.
- 34**: Small cylindrical component.
- 35**: Small screw/bolt.
- 36**: Small screw/bolt.

The diagram shows the assembly of these parts into a functional unit, with dashed lines indicating the alignment and assembly sequence.

PARTS LISTING - ILLUSTRATION 8: ELECTRIC MOTOR GROUPING			
Item #	Part #	Description	Qty.
1	16018	Motor, U.S. Motors 5HP-3PH	1
2	10320	Bolt, Carriage 3/8-16 x 1-1/4	4
3	10040	Washer, Garret 17/32	4
4	10025	Washer, Flat 3/8	4
5	10811	Washer, Lock 3/8	4
6	10404	Nut 3/8-16	4
7	10410	Bolt, Tap 3/8-16 x 2-1/2 (Full Thd.)	1
8	10404	Nut 3/8-16	1
9	10547	Bushing, SH x 1-1/8" Bore	1
10	C90052	Sprocket, HTD P38-8M-30-SH	1
11	10016	Key 3/16" Sq. x 1-1/2	1
12	10605	Connector, Strain Relief 3/4 NPT Range .650 to .750	1
*13	10740	Conduit Lock Nut 3/4 NP	1
14	C66037	Wire Harness 12/4 x 12" LOA	1
15	16114	Plug, Locking 20A/480V	2
16	16115	Plug Connector, Locking 20A/480V	2
17	C66032	Wire Harness 12/4 x 22" LOA	1
18		Starter Box	
	C66070	Automatic Voltage Selector 230/460V	1
	C66071	460 Volt Only	1
19	10602	Washer, Flat 1/4	4
20	10038	Washer, Lock 1/4	4
21	10018	Screw, Cap 1/4-20 x 3/4	4
22	10605	Connector, Strain Relief 3/4 NPT Range .650 to .750	2
*23	10740	Conduit Lock Nut 3/4 NP	2
24	C66031	Wire Harness 12/4 x 24" LOA	1
25	C66028	Wire Harness 16/3 x 20" LOA	1
26	40066	Connector, Strain Relief 1/2 NPT Range .350 to .450	2
*27	10790	Conduit Lock Nut 1/2 NPT	2
28	C66025	Handle Bar	1
29	10608	Grip, Hand 1" Model AT	2
30	10029	Screw, Cap 3/8-24 x 1-3/4	2
31	10025	Washer, Flat 3/8	4
32	10811	Washer, Lock 3/8	2
33	10014	Nut 3/8-24	2
34	C66027	Cover, Switch Box	1
35	10394	Screw, Sheet Metal #8 x 1/2	4
36	10461	Washer, Lock, Int. Tooth #8	4

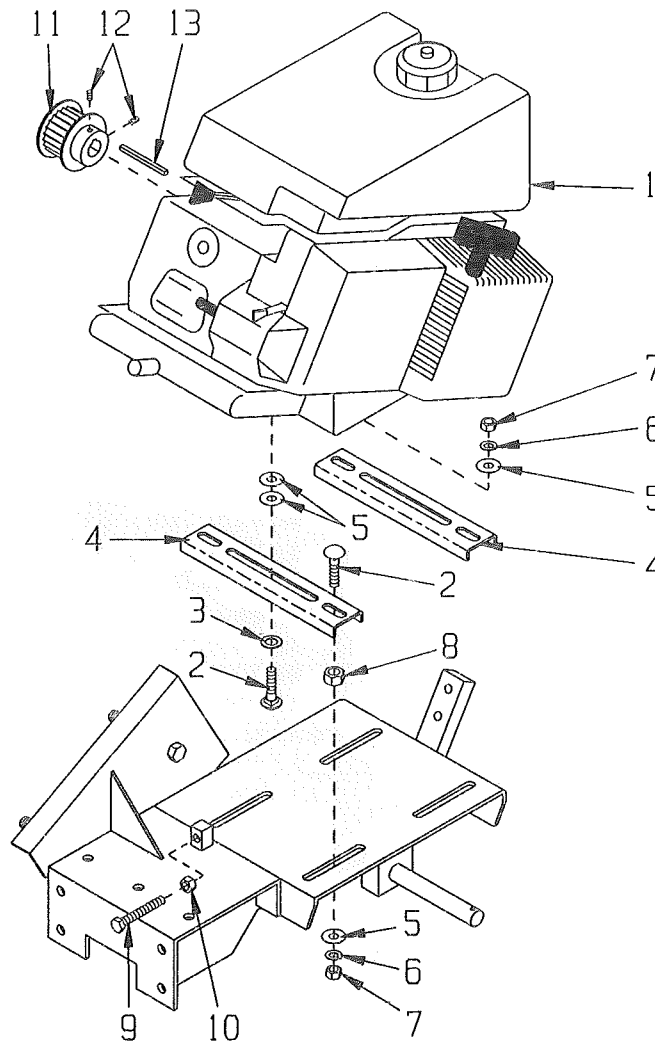
* Not Shown In Actual Location

ILLUSTRATION 9: SWITCH BOX ASSEMBLY MODEL CPM4-5US



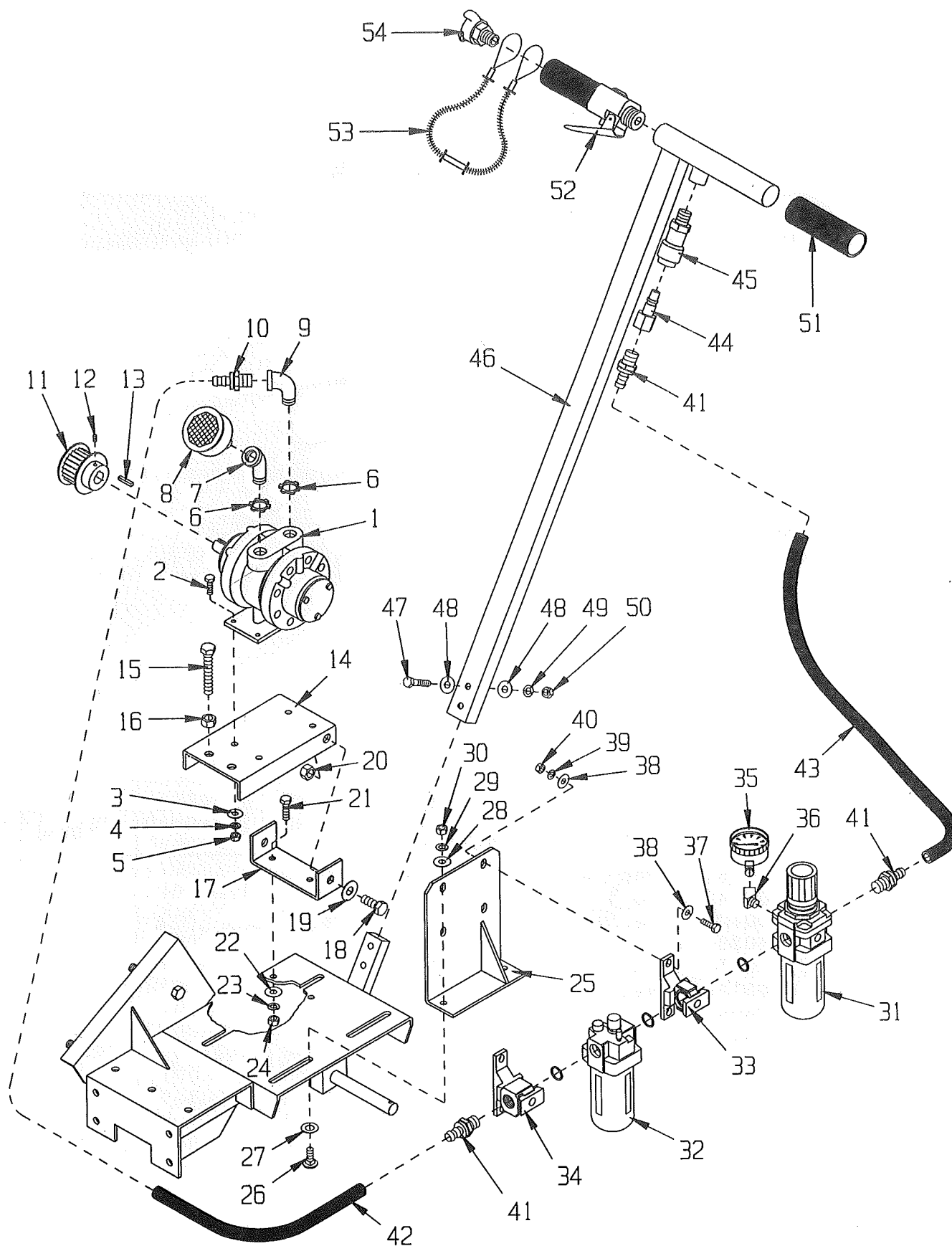
Item #	Part #	Description	Qty.
1	C66025	Handle Bar (See Illustration 8)	1
2	10988	Grip, Flat Red 1/16 x 1/2 x 3-1/2	1
3	C66033	Lever, Switch	1
4	10015	Nut, Lock 1/4-20	1
5	10602	Washer, Flat 1/4	3
6	10314	Screw, Cap 1/4-20 x 1-3/4	1
7	78117	Switch, Micro 20A/125-250V	1
8	10462	Nut 8-32	2
9	10461	Washer, Lock, Int. Tooth #8	2
10	C66034	Spacer, Copper	2
11	10319	Screw, Mach. 8-32 x 1-1/2	2
12	C66035	Stud 1/4-20 x 1	2
13	10013	Nut 1/4-20	2
14	10015	Nut, Lock 1/4-20	1
15	10602	Washer, Flat 1/4	2
16	10031	Screw, Cap 1/4-20 x 1	1
17	C66036	Spring, Comp. 3/8"OD x 1-1/2"L	1

ILLUSTRATION 10: ENGINE GROUPING MODEL CPM4-5K



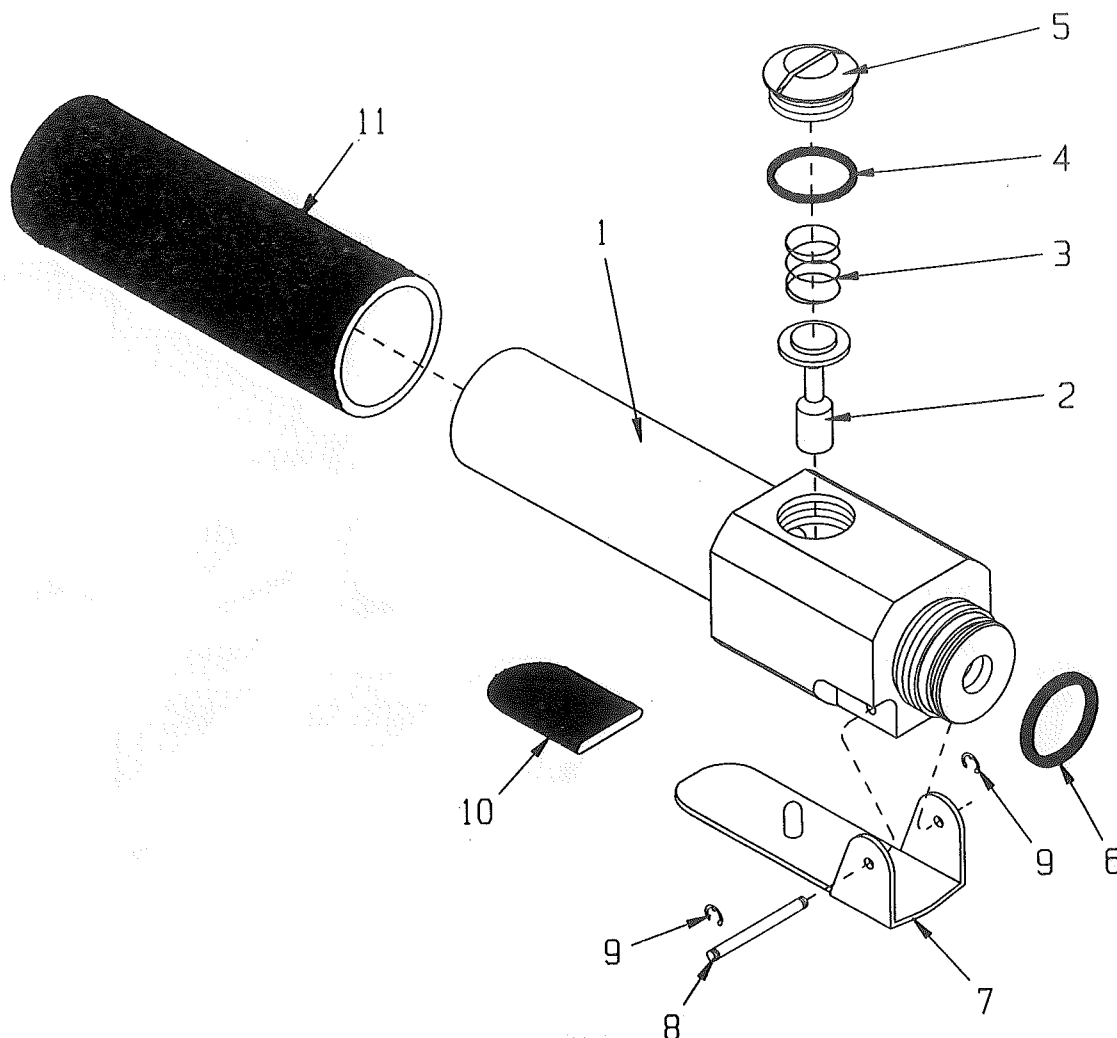
Item #	Part #	Description	Qty.
1	15025	Engine, Kohler 5 HP Command	1
2	10804	Bolt, Carriage 3/8-16 x 1-1/2	8
3	10040	Washer, Garret 1"OD x 17/32"ID x .054"	4
4	C66039	Bracket, Engine Mount	2
5	10025	Washer, Flat 3/8	16
6	10811	Washer, Lock 3/8	8
7	10404	Nut 3/8-16	8
8	10417	Nut 1/2-13	4
9	10410	Bolt, Tap 3/8-16 x 2-1/2 (Full Thd.)	1
10	10404	Nut 3/8-16	1
11	66046	Sprocket, HTD P22-8M-30 (Bored 3/4")	1
12	10161	Screw, Set 1/4-28 x 5/16	2
13	10016	Key 3/16 x 1-1/2	1

ILLUSTRATION 11: AIR MOTOR GROUPING MODEL CPM4-A5G



PARTS LISTING - ILLUSTRATION 11: AIR MOTOR GROUPING			
Item #	Part #	Description	Qty.
1	80050	Motor, Air, 5 HP Gast 8AM-FRV-2B	1
2	10806	Screw, Cap 5/16-18 x 1	4
3	10213	Washer, Flat 5/16	4
4	10801	Washer, Lock 5/16	4
5	10054	Nut 5/16-18	4
6	10790	Conduit Lock Nut 1/2 NP	2
7	10734	Elbow, Street 1/2 NPT x 45° (Black)	1
8	80055	Muffler, 1/2 NPT	1
9	10724	Elbow, Street 1/2 NPT x 90° (Black)	1
10	80061	Barb, Push-On 1/2 Hose x 1/2 MPT	1
11	66046	Sprocket, HTD P22-8M-30 (Bored 3/4")	1
12	10161	Screw, Set 1/4-28 x 5/16	2
13	10135	Key 3/16" Sq. x 1	1
14	66086	Mount Bracket, Air Motor	1
15	10340	Bolt, Tap 1/2-13 x 3 (Full Thd.)	2
16	10417	Nut 1/2-13	2
17	66087	Mount Strap, Air Motor	1
18	10321	Screw, Cap 1/2-20 x 1-1/4	2
19	10312	Washer, Flat 1/2	2
20	10154	Nut, Hex Nylon Lock 1/2-20	2
21	10055	Screw, Cap 3/8-16 x 1	2
22	10025	Washer, Flat 3/8	2
23	10811	Washer, Lock 3/8	2
24	10404	Nut 3/8-16	2
25	66088	F.R.L. Bracket	1
26	10802	Bolt, Carriage 3/8-16 x 1	2
27	10040	Washer, Garret 1"OD x 17/32"ID x .054"	2
28	10025	Washer, Flat 3/8	2
29	10811	Washer, Lock 3/8	2
30	10404	Nut 3/8-16	2
31	80070	Filter/Regulator, 1/2 NPT (NAW4000-N04)	1
32	80071	Lubricator, 1/2 NPT (NAL4000-N04)	1
33	80072	Bracket, T-Type Y40T	1
34	80073	Bracket, T-Type Adaptor NE40T-N04	1
35	C90207	Gauge, Air Pressure, Side Stem	1
36	10772	Elbow, Street 1/8 NPT x 45° (Brass)	1
37	10055	Screw, Cap 3/8-16 x 1	4
38	10025	Washer, Flat 3/8	8
39	10811	Washer, Lock 3/8	4
40	10404	Nut 3/8-16	4
41	80061	Barb, Push-On 1/2 Hose x 1/2 MPT	3
42	66098	Hose, Push-On 1/2 I.D. x 17-1/2 L	1
43	66099	Hose, Push-On 1/2 I.D. x 33 L	1
44	66057	Fitting, Quick-Connect Male Coupler 1/2 NPT	1
45	66056	Fitting, Quick-Connect Female Plug 1/2 NPT	1
46	66089	Handle Bar	1
47	10029	Screw, Cap 3/8-24 x 1-3/4	2
48	10025	Washer, Flat 3/8	4
49	10811	Washer, Lock 3/8	2
50	10014	Nut 3/8-24	2
51	C10531	Grip, Foam	2
52	66090	Air Valve Assembly	1
53	63040	Cable, "Whipchek" Safety 1/8 x 20-1/4	1
54	80075	Coupler, Air Hose, 1/2 MPT	1

ILLUSTRATION 12: AIR VALVE ASSEMBLY MODEL CPM4-A5G



Item #	Part #	Description	Qty.
1	66091	Air Valve Body	1
2	66092	Valve Stem	1
3	66096	Spring, Comp. 19/32"O.D. x 5/8"L.	1
4	66094	O-Ring #019, 1/16 x 13/16"I.D.	1
5	66093	Retainer Cap, Valve Stem	1
6	C10536	O-Ring 2 x 26mm	1
7	C10573	Lever, Valve	1
8	C10574	Pin 1/8 x 1-3/8	1
9	C10622	Retaining Ring, E-Clip 1/8	1
10	C10569	Grip, Flat Red 3/4 x 1-1/2	1
11	C10531	Foam Grip	1

NOTES

LIMITED EQUIPMENT WARRANTY

Equipment Development Company, Inc. herein referred to as EDCO warrants that each new unit manufactured by EDCO to be free from defects in material and workmanship in normal use and service for a period of (1) one year (except in the case of the cutter drum assembly on all model concrete asphalt planes, in which case the warranty period shall be 90 days) from date of shipment to the original retail or equipment rental center owner.

EDCO will, at its option, repair or replace, at the EDCO factory or at a point designated by EDCO any part, which shall appear to the satisfaction of EDCO inspection to have been defective in material or workmanship.

This warranty, does not apply to failure occurring as a result of abuse, misuse, negligent repairs, corrosion, erosion, normal wear and tear, alterations or modifications made to the product without express written consent of EDCO; or failure to follow the recommended operating practices and maintenance procedures as provided in the products operating and maintenance manuals.

This warranty does not obligate EDCO to bear any transportation charges in connection with the replacement or repair of defective parts. This warranty does not obligate EDCO to bear any expenses for travel time or of personnel in connection with any service calls.

Accessories or equipment furnished and installed on the product by EDCO but manufactured by others, including but not limited to engines, motors, electrical equipment, transmissions, etc., shall carry the accessory manufacturers' own warranty.

THIS WARRANTY IS IN LIEU OF ALL OTHER WARRANTIES, EXPRESSED OR IMPLIED, OR STATUTORY, INCLUDING ANY WARRANTIES OF MERCHANTABILITY OR OF FITNESS FOR A PARTICULAR PURPOSE.

LIABILITY LIMITATIONS

The remedies of the user set forth under provisions of warranty outlined above are exclusive and the total liability of EDCO with respect to their sale or the equipment and service furnished hereunder, in connection with the performance or breach thereof, or from the sale, delivery, installation, repair or technical direction covered by or furnished under the sale, whether based on contract, warranty, negligence, indemnity, strict liability, or otherwise shall not exceed the purchase price of the unit of equipment upon which such liability is based.

EDCO will not in any event be liable to the user, any successors in interest or any beneficiary or assignee relat-

ing to this sale for any consequential, incidental, indirect, special or punitive damages arising out of this sale or any breach thereof, or any defects on, or failure of, or malfunction of the equipment under this sale whether based upon loss of use, lost profits or revenue, interest, lost goodwill, work stoppage, impairment of other goods, loss by reason of shutdown or non-operation, increased expenses of operation of the equipment, cost of purchase or replacement power or claims of users or customers of the user for service interruption whether or not such loss or damage is based on contract, warranty, negligence, indemnity, strict liability, or otherwise.

EDCO reserves the right to modify, alter and improve any part or parts without incurring any obligation to replace any part or parts previously sold without such modified, altered or improved part or parts.

No person is authorized to give any other warranty or to assume any additional obligation on EDCO's behalf unless made in writing and signed by an officer of EDCO.

Equipment Development Company, Inc.

⚠ DANGER

**DO NOT OPERATE GASOLINE POWERED
EQUIPMENT WITHOUT ADEQUATE VENTILATION**

Carbon monoxide is an invisible, odorless gas that can kill.