

STARTING
SERIAL #19040617



PARTS LIST MANUAL FOR SLURRY PRO VACUUM



Part No. ED93280



**READ AND UNDERSTAND THE OPERATOR'S INSTRUCTION MANUAL
THOROUGHLY BEFORE ATTEMPTING TO OPERATE THIS EQUIPMENT.
Death or serious injury could occur if this machine is used improperly.**



Machine specific Operator's Instruction Manuals are offered at edcoinc.com/customer-resources/manuals-parts-lists/



EQUIPMENT DEVELOPMENT COMPANY, INC.

100 Thomas Johnson Drive, Frederick, MD 21702-4600 USA

Phone: 800-638-3326 or 301-663-1600 • Fax: 800-447-3326 or 301-663-1607

Website: www.edcoinc.com • E-mail: techsupport@edcoinc.com

Printed in USA
JWA ©2019

**SAFETY INFORMATION****SAFETY MESSAGES**

• Safety Instructions are preceded by a graphic alert symbol of DANGER, WARNING, or CAUTION.

DANGER

Indicates an imminent hazard which, if not avoided, will result in death or serious injury.

WARNING

Indicates an imminent hazard which, if not avoided, can result in death or serious injury.

CAUTION

Indicates hazards which, if not avoided, could result in serious injury and or damage to the equipment.

GASOLINE / PROPANE POWERED EQUIPMENT**WARNING**

• Engine exhaust from this product contains chemicals known to the State of California to cause cancer, birth defects or other reproductive harm.

WARNING

• Tilting a gasoline powered machine fitted with an EPA approved vented charcoal filter gas cap, beyond 20° can cause fuel leakage. If a leak occurs, do not start or run the engine until the leak is fixed. Eliminate all other ignition sources in the immediate area (no smoking, flares, sparks or flames). Use approved gasoline absorbing material to contain the fuel leakage. Then use clean, non-sparking tools to collect absorbed materials then dispose of these contaminants properly.



• Gasoline is extremely flammable and poisonous. It should only be dispensed in well ventilated areas, and with a cool engine.

• Small gasoline engines produce high concentrations of carbon monoxide (CO) example: a 5 HP 4 cycle engine operation in an enclosed 100,000 cu. ft. area with only one change of air per hour is capable of providing deadly concentrations of CO in less than fifteen minutes. Five changes of air in the same area will produce noxious fumes in less than 30 minutes. Gasoline powered equipment should not be used in enclosed or partially enclosed areas. Symptoms of CO poisoning include, head-ache, nausea, weakness, dizziness, visual problems and loss of consciousness. If symptoms occur - get into fresh air and seek medical attention immediately.

- Never refuel a hot engine or an engine while it is running.
- Engines are shipped from factory without fuel/oil.



• Propane is extremely flammable and is heavier than air and tends to settle in low areas where a spark or flame could ignite gas. DO NOT start or operate this propane engine in a poorly ventilated area where leaking propane gas could accumulate and endanger safety of persons in area. If headache develops, shut off machine. Have it checked for carbon monoxide emissions by a qualified technician before using it again. To ensure personal safety, installation and repair of propane fuel supply systems must be performed only by qualified technicians. Carbon monoxide emissions from this machine are greatly increased due to a dirty combustion air cleaner.

ELECTRICAL POWERED EQUIPMENT

Extreme care must be taken when operating electric models with water present: Ensure power cord is properly grounded, is attached to a Ground-Fault-Interrupter (GFI) outlet, and is undamaged.

- Check all electrical cables - be sure connections are tight and cable is continuous and in good condition. Be sure cable is correctly rated for both the operating current and voltage of this equipment.
- Improper connection of the equipment grounding conductor can result in a risk of electric shock. Check with qualified electrician or service person if there is any doubt as to whether the outlet is properly grounded. Adhere to all local codes and ordinances.
- NOTE: In the event of a malfunction or breakdown, grounding provides a path of least resistance for the electric current to dissipate. The motor is equipped with a grounded plug and must be connected to an outlet that is properly installed and properly grounded. DO NOT modify the plug provided on the motor. If the plug does not fit the outlet have a qualified electrician install the proper receptacle.

ELECTRICAL POWERED EQUIPMENT CONTINUED

- Do not disconnect power by pulling cord. To disconnect, grasp the plug, not the cord.
- Unplug power cord at the machine when not in use and before servicing.
- Switch motor OFF before disconnecting power.
- Never use frayed, damaged, taped or under rated extension cords. Electrical shock could result in death or serious injury to the operator and damage to the equipment.
- Assure you are using the proper extension cord length.

GENERAL INSTRUCTIONS

- Equipment should only be operated by trained personnel in good physical condition and mental health (not fatigued). The operator and maintenance personnel must be physically able to handle the bulk weight and power of this equipment.
- This is a one person tool. Maintain a safe operating distance to other personnel. It is the operators' responsibility to keep other people (workers, pedestrians, bystanders, etc.) away during operation. Block off the work area in all directions with roping, safety netting, etc. Failure to do so may result in others being injured by flying debris or exposing them to harmful dust and noise.
- This equipment is intended for commercial use only.
- For the operator's safety and the safety of others, always keep all guards in place during operation.
- Never let equipment run unattended.



- Personal Protection Equipment and proper safety attire must be worn when operating this machinery. The operator must wear approved safety equipment appropriate for the job such as hard hat and safety shoes when conditions require. Hearing protection **MUST** be used when operational noise levels of this equipment may exceed 85db. Eye protection **MUST** be worn at all times.



Keep body parts, loose clothing and accessories away from moving parts. Failure to do so could result in dismemberment or death.

- Do not modify the machine.
- Stop motor/engine when adjusting or servicing this equipment. Maintain a safe operating distance from flammable materials. Sparks from the cutting-action of this machine can ignite flammable materials or vapors.

**DUST WARNING**

Some dust created by power sanding, sawing, grinding, drilling, and other construction activities contains chemicals known to cause cancer, birth defects, or other reproductive harm. Materials being removed can be toxic or hazardous. A breathing respirator is required to help protect the operator.

Some examples of these chemicals are:

- Lead from lead-based paints.
- Crystalline silica from bricks, concrete and other masonry products. Your risk of exposure to these chemicals varies depending on how often you do this type of work. To reduce your risk: work in a well ventilated area, use a dust control system, such as an industrial-style vacuum, and wear approved personal safety equipment, such as a dust/particle respirator designed to filter out microscopic particles.
- See more on the importance of dust prevention and silica warnings at: osha.gov/silica
- More concrete and silica dust suppression training and educational materials available at edcoinc.com/silica-standards or scan the QR code on page 5.
- Written exposure plans are provided at <http://www.edcoinc.com/written-exposure-control-plans/>

PARTS LIST MANUAL FOR SLURRY PRO VACUUM

TABLE OF CONTENTS

<u>Section</u>	<u>Page Number</u>
Safety Information	2
How To Order Replacement Parts	3
Illustration 1: Slurry Pro Vacuum	4
Illustration 2: Slurry Pro Vacuum Assembly	5
Illustration 3: Slurry Filter Module	6, 7
Illustration 4: Rear Stack Assembly	8, 9
Illustration 5: Motor Deck Assembly	10, 11
Illustration 6: Motor Head Assembly, 120V, 1200 Watt	12, 13
Illustration 7: Slurry Collection Assembly	14, 15
Illustration 8: 32 Inch Floor Tool	16, 17
Illustration 9: Double Stack Frame Assembly	18, 19
Illustration 10: Switch Enclosure Assembly	20, 21
Notes	22
Limited Equipment Warranty of Sale	23
STOP - Before Using This Product	24

HOW TO ORDER REPLACEMENT PARTS

- ☐ To insure product safety and reliability, always use genuine EDCO replacement parts when making repairs to the equipment.
- ☐ When calling for parts, specify the MODEL and SERIAL number of the machine, which can be found on the NAME PLATE. Keep that information in the space provided. In addition to this information, give part number, description, and quantity as listed on the parts list to your parts representative.
- ☐ Please note: Due to improvements and changes in the equipment, the illustrations shown may be different than the actual machine.

FILL IN INFORMATION BELOW

Date of Purchase _____

Model # _____

Serial # _____

SKU # _____

ILLUSTRATION 1: SLURRY PRO VACUUM

PART # ED93280

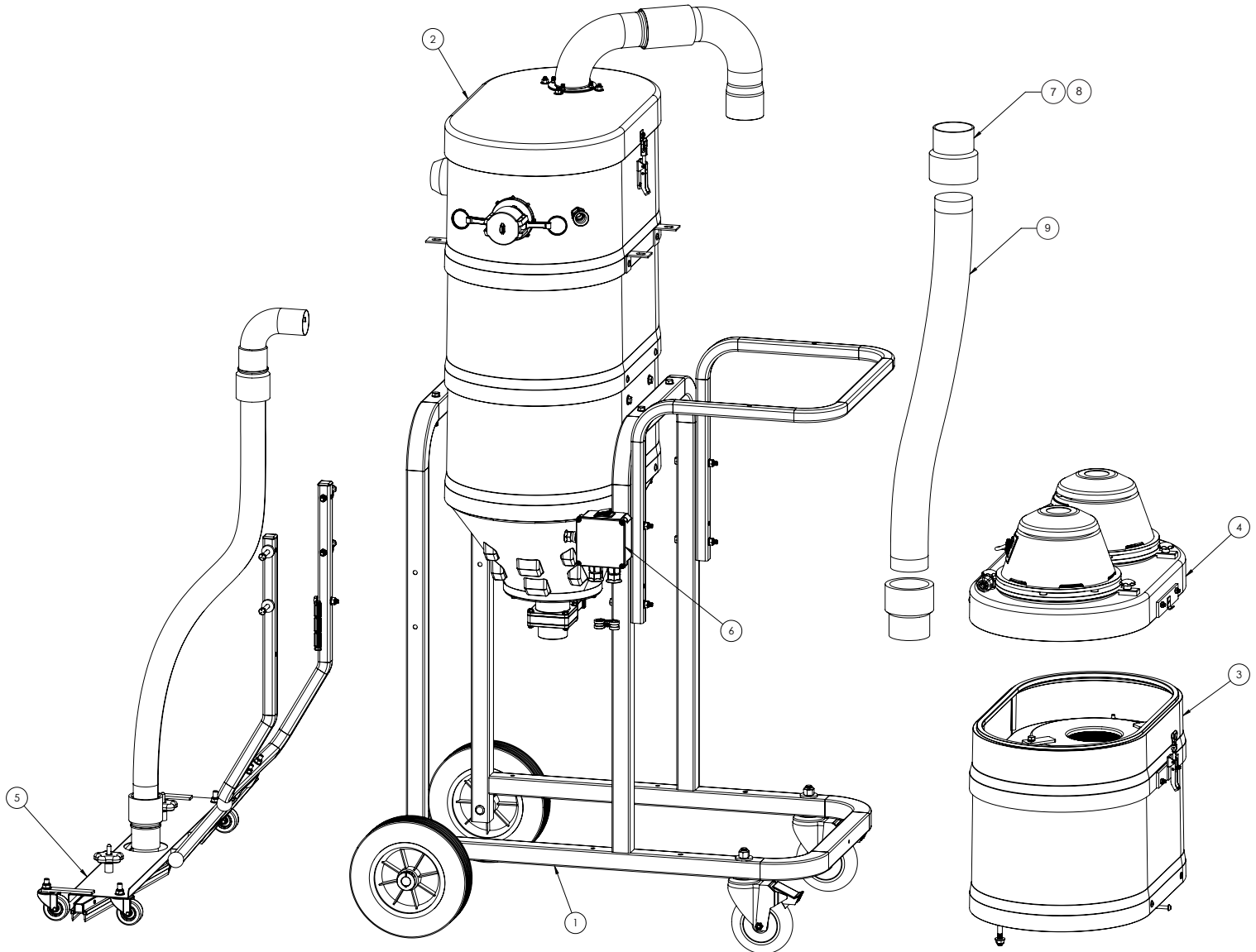


SEE ILLUSTRATION 2 FOR BREAKDOWN OF ASSEMBLIES

ILLUSTRATION 2: SLURRY PRO VACUUM ASSEMBLY

E-SPVAC-PL-0419A

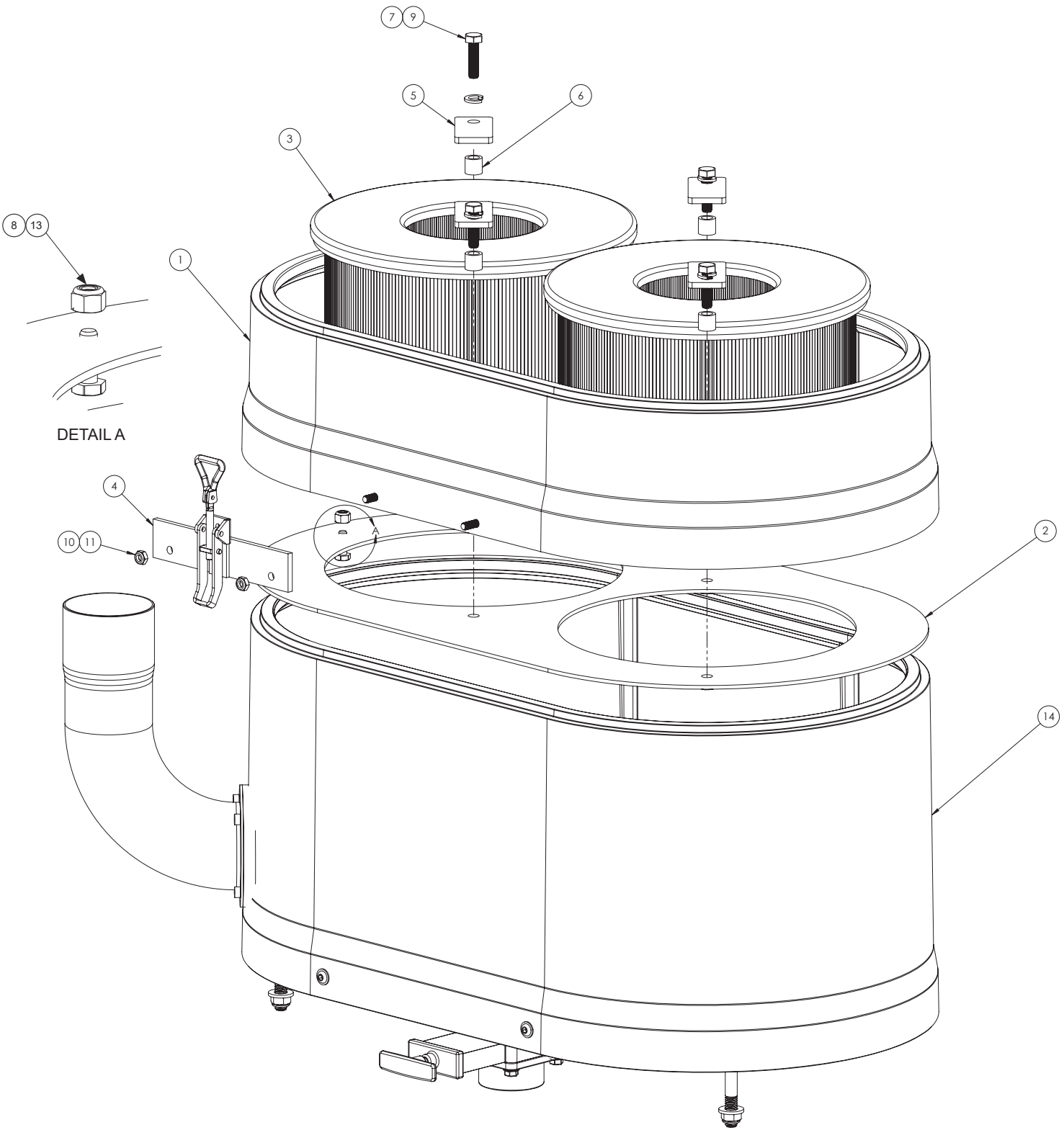
PART # ED93280



ITEM #	PART #	DESCRIPTION	QTY.
1	ED93280500	DOUBLE STACK FRAME, SLURRY VAC, NON-EX (SEE ILLUSTRATION 9 FOR BREAKDOWN)	1
2	ED93280200	SLURRY COLLECTION ASM (SEE ILLUSTRATION 7 FOR BREAKDOWN)	1
3	ED93280100	FILTER MODULE, SLURRY VAC (SEE ILLUSTRATION 3 FOR BREAKDOWN)	1
4	ED90223WNSA001	SLURRY VAC MOTOR DECK ASSEMBLY, 110V (SEE ILLUSTRATION 5 FOR BREAKDOWN)	1
5	ED5018SLRY	FLOOR TOOL, 32IN, 2IN CONNECTION, SLURRY VAC (SEE ILLUSTRATION 8 FOR BREAKDOWN)	1
6	EDE989NNJ04	ENLCOSURE, W/SWITCH, PVC, SLURRY VAC (SEE ILLUSTRATION 10 FOR BREAKDOWN)	1
7	ED7012B	HOSE, CUFF 3"	2
8	ED4027	HOSE CLAMP, 2-1/2" TO 4-1/8"	2
9	ED7013	HOSE, 3.0", VINYL W/ WIRE HELIX	3.3 FT.

ILLUSTRATION 3: SLURRY FILTER MODULE

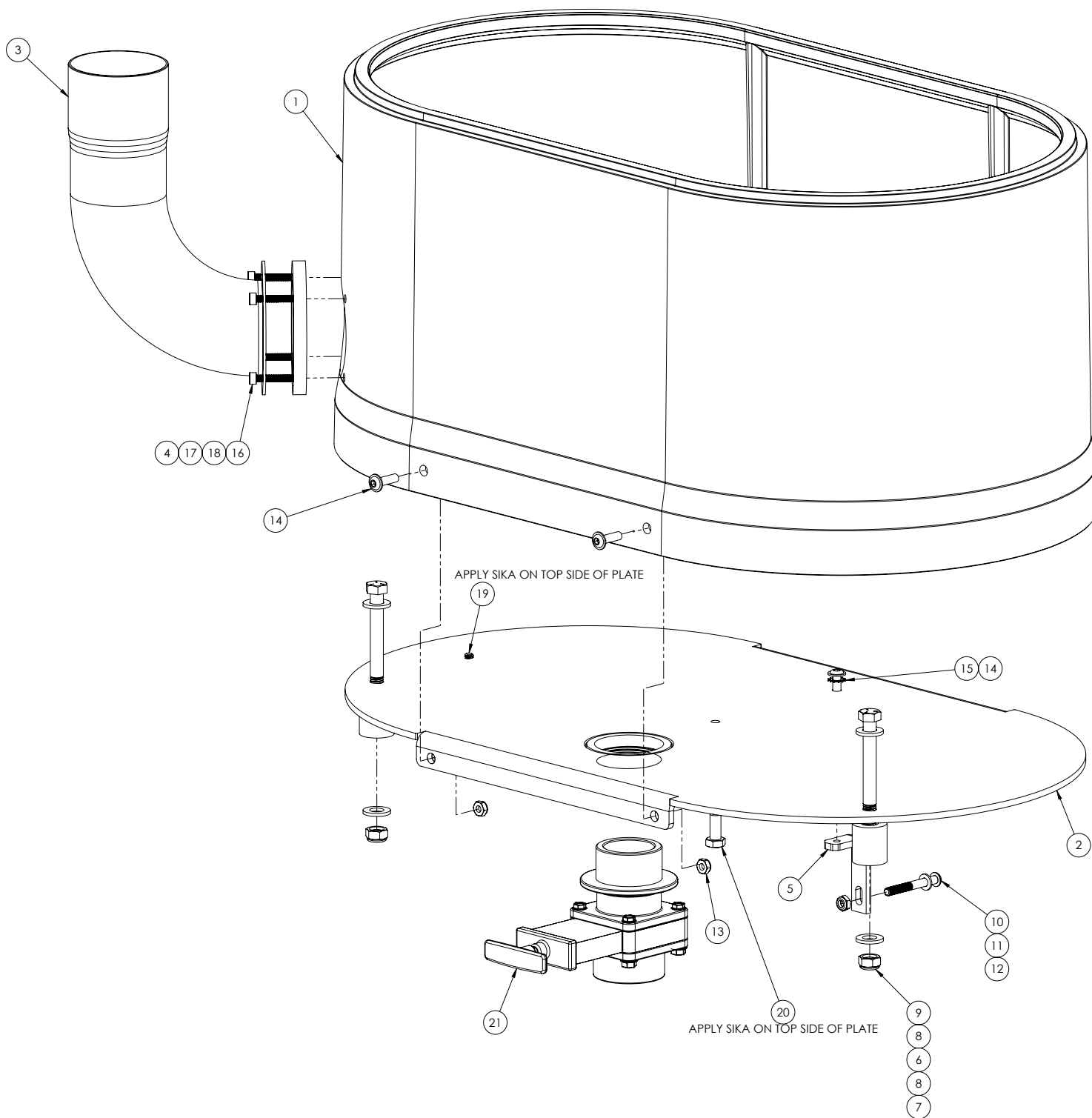
PART # ED93280100



PARTS LISTING			
ILLUSTRATION 3: SLURRY FILTER MODULE			
ITEM #	PART #	DESCRIPTION	QTY.
1	ED34823009	HOUSING SPACER, SMALL, RED, CLAMP PLATE HOLES	1
2	ED9675PLATE	NA CARTRIDGE FILTER PLATE	1
3	ED10007147	FILTER CARTRIDGE, 10.25 X 7.875	2
4	ED31406SA	LATCH PULL CLAMP LEVER ASM	2
5	ED10003683BRACKET	FILTER HOLD DOWN BRACKET, ALCOA	4
6	ED34812D	SPACER, 1/4" SCH40, 1/2" LONG	4
7	ED32861S	WASHER SPLIT LOCK M8 SS	4
8	ED200179	HEX BOLT 1/4-20 X 3/4" SS	1
9	ED328660	HEX BOLT M8 X 30 SS	4
10	ED34816S	HEX BOLT M6 X 30 SS	4
11	ED34876S	M6 LOCK NUT	4
12	-	NO PART FOR THIS ITEM #	-
13	ED250025S	NUT LOCK .25-20, SS	1
14	ED565058A	REAR STACK ASM, DOUBLE STACK (SEE ILLUSTRATION 4 FOR BREAKDOWN)	1

ILLUSTRATION 4: REAR STACK ASSEMBLY

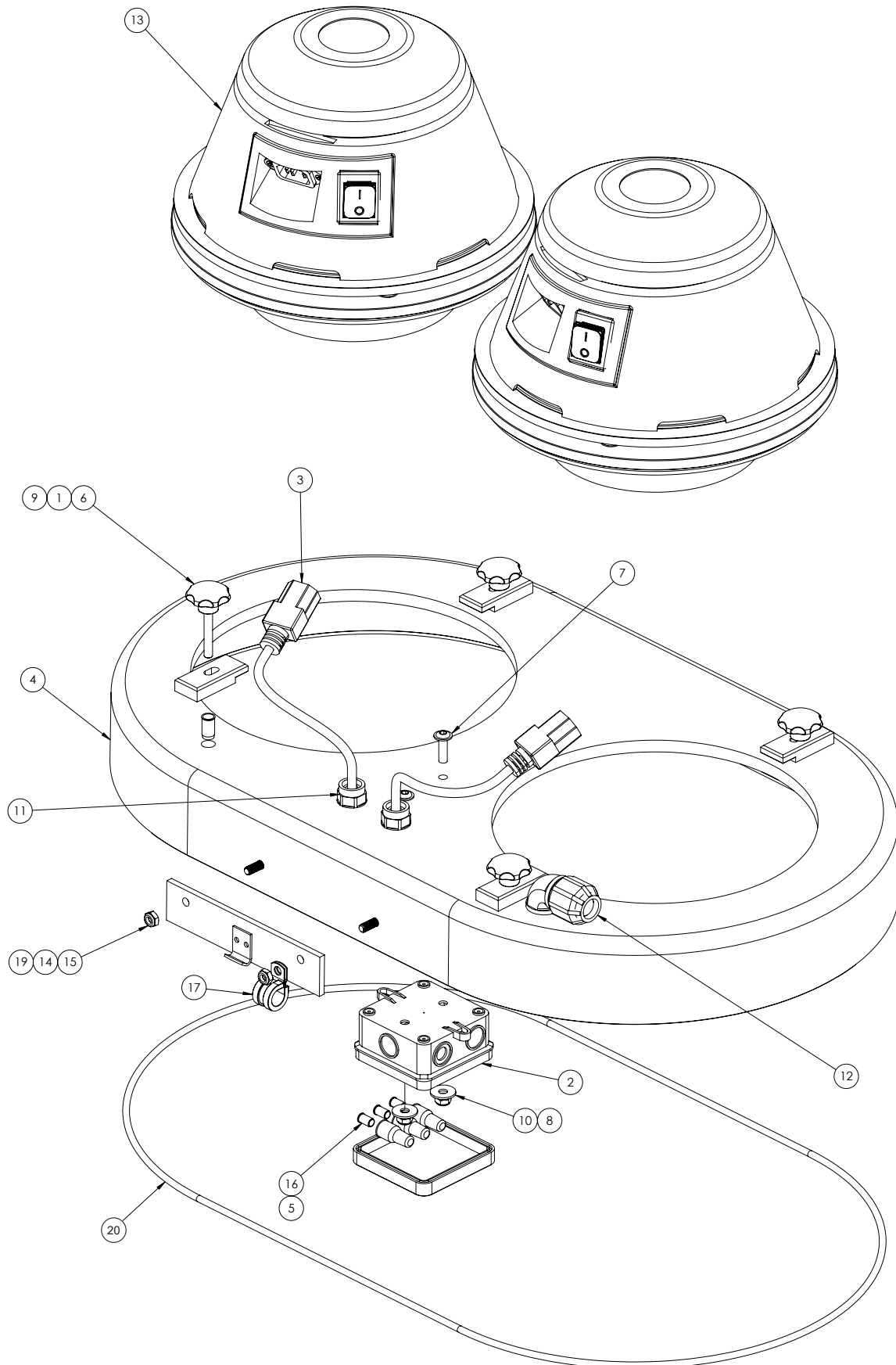
PART # ED565058A



PARTS LISTING			
ILLUSTRATION 4: REAR STACK ASSEMBLY			
ITEM #	PART #	DESCRIPTION	QTY.
1	ED34820007	REAR STACK INLET HOUSING, RED	1
2	ED9850602	SA MOUNT PLATE, SLURRY VAC	1
3	ED9043703	ELBOW, 90, 2.75IN, SWEDGED, FLANGED	1
4	ED250981	70MM INLET GASKET	1
5	ED32872000	BRACKET, DS2 HOOD	1
6	ED8840D01	PVC SPACER, MX360 FILTER MODULE	2
7	ED200512	HEX BOLT 3/8-16 X 3 1/2"	2
8	ED200187	WASHER, FLAT, 3/8, SS	4
9	ED37506S	LOCK NUT SS, .375	2
10	ED32905	SCREW, M6 X 50, BUTTON HEAD	1
11	ED25067	WASHER FLAT M6	1
12	ED34876S	M6 LOCK NUT	1
13	ED34876	M6 LOCK NUT	4
14	ED34817	SCREW ULS SOC HD M6 X 20	5
15	ED25000	WASHER EXT STAR .25IN	1
16	ED32866S	SCREW SOC HD M5-30 SS	4
17	ED328669	WASHER FLAT SS, M5	4
18	ED34875S	NUT LOCK SS, M5	4
19	ED25003S	HEX BOLT 1/4-20, .5LG, SS	1
20	ED31201	BOLT HEX 5/16-18 X 3/4"	1
21	ED31907	GATE VALVE, 1.5 NPT, PVC, BLK	1

ILLUSTRATION 5: MOTOR DECK ASSEMBLY

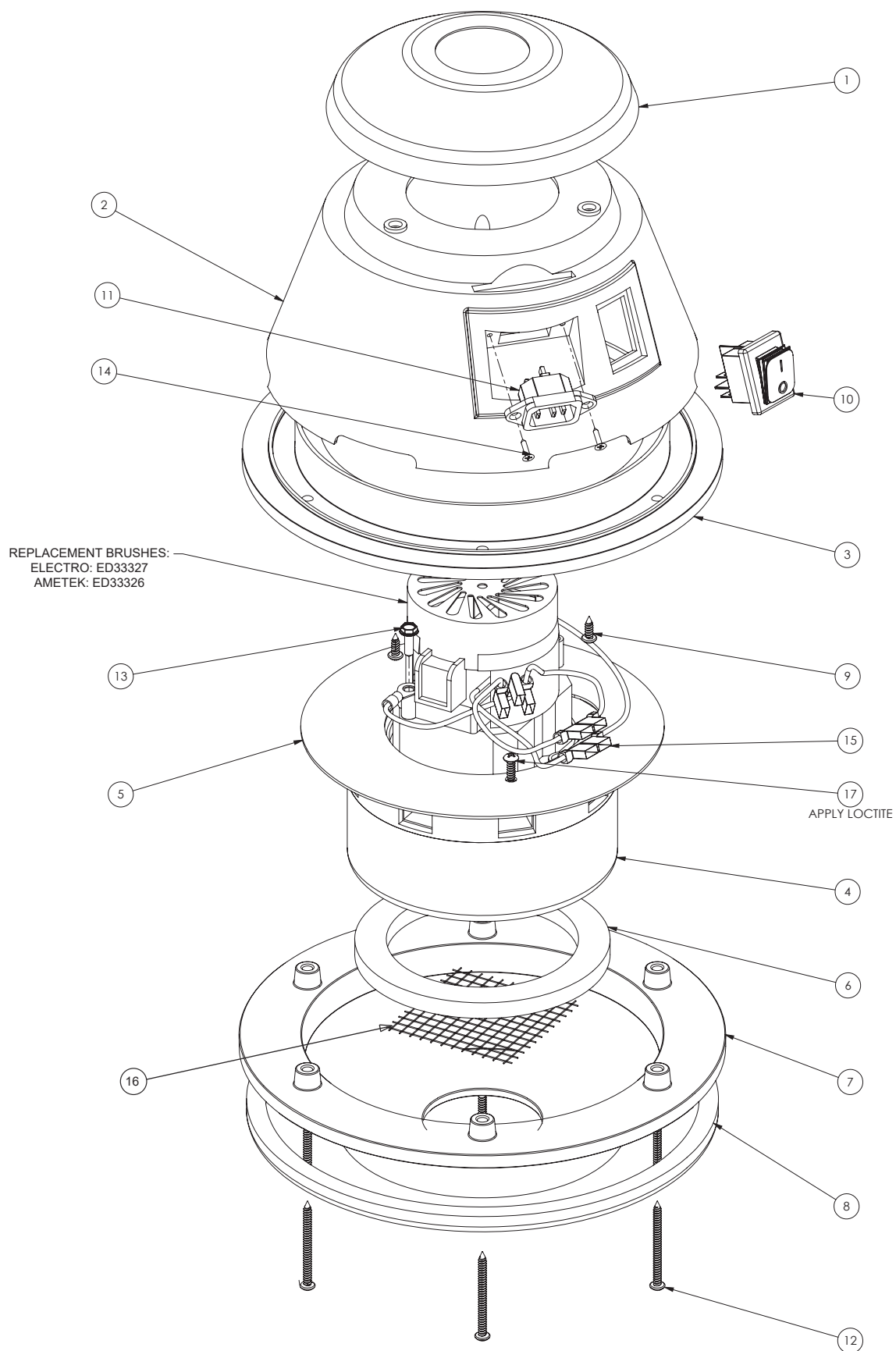
PART # ED90223WNSA001



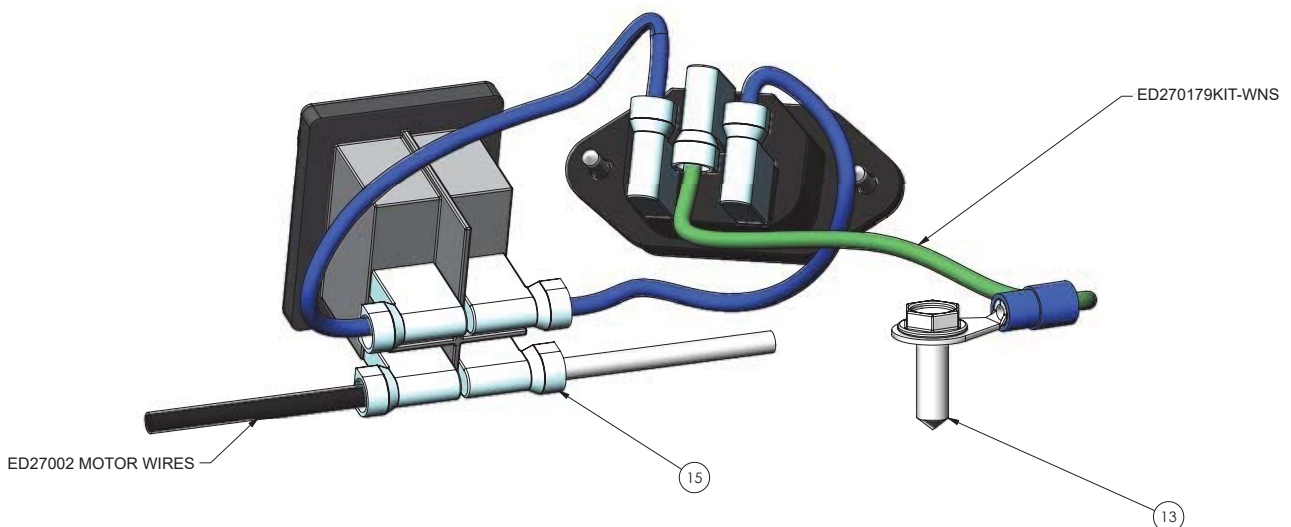
PARTS LISTING			
ILLUSTRATION 5: MOTOR DECK ASSEMBLY			
ITEM #	PART #	DESCRIPTION	QTY.
1	ED20020	MOTOR HOLD DOWN BRACKET	4
2	ED32999	JUNCTION BOX, GREY	1
3	ED25210	FEMALE IEC PLUG	2
4	ED90223005	SLURRY VAC MOTOR DECK	1
5	ED21092	WIRE NUT, GAS EX, CRIMP ON	3
6	ED26603	M6 MOTOR HOLD DOWN KNOB	4
7	ED34817	SCREW ULS SOC HD M6 X 20	2
8	ED34876	M6 LOCK NUT	2
9	ED34817A	M6 BLIND PEM	4
10	ED34819	WASHER FENDER M6	2
11	ED34960	PG 09 CABLE GRIP, POLY	2
12	ED34961	STRAIN RELIEF, 90, .5IN, BLACK	1
13	ED27001A	MOTOR HEAD ASSEMBLY, 110V, 1000 WATT (SEE ILLUSTRATION 6 FOR BREAKDOWN)	2
14	ED31407SA	LATCH PULL HOOK ASM	2
15	ED34876S	M6 LOCK NUT	4
16	ED21092-1	INSULATOR, GAS EX, BRASS, CRIMP ON	3
17	ED25329	CLAMP, .5IN HOSE, ZINC, CUSHIONED	1
18	-	NO PART FOR THIS ITEM #	-
19	ED3286630	SCREW SOC FH M6 X 20 SS	4
20	ED31376002	GASKET, NEOPRENE, .188", 5.4FT LG	1

**ILLUSTRATION 6:
MOTOR HEAD ASSEMBLY, 120V, 1200 WATT**

PART # ED27001A



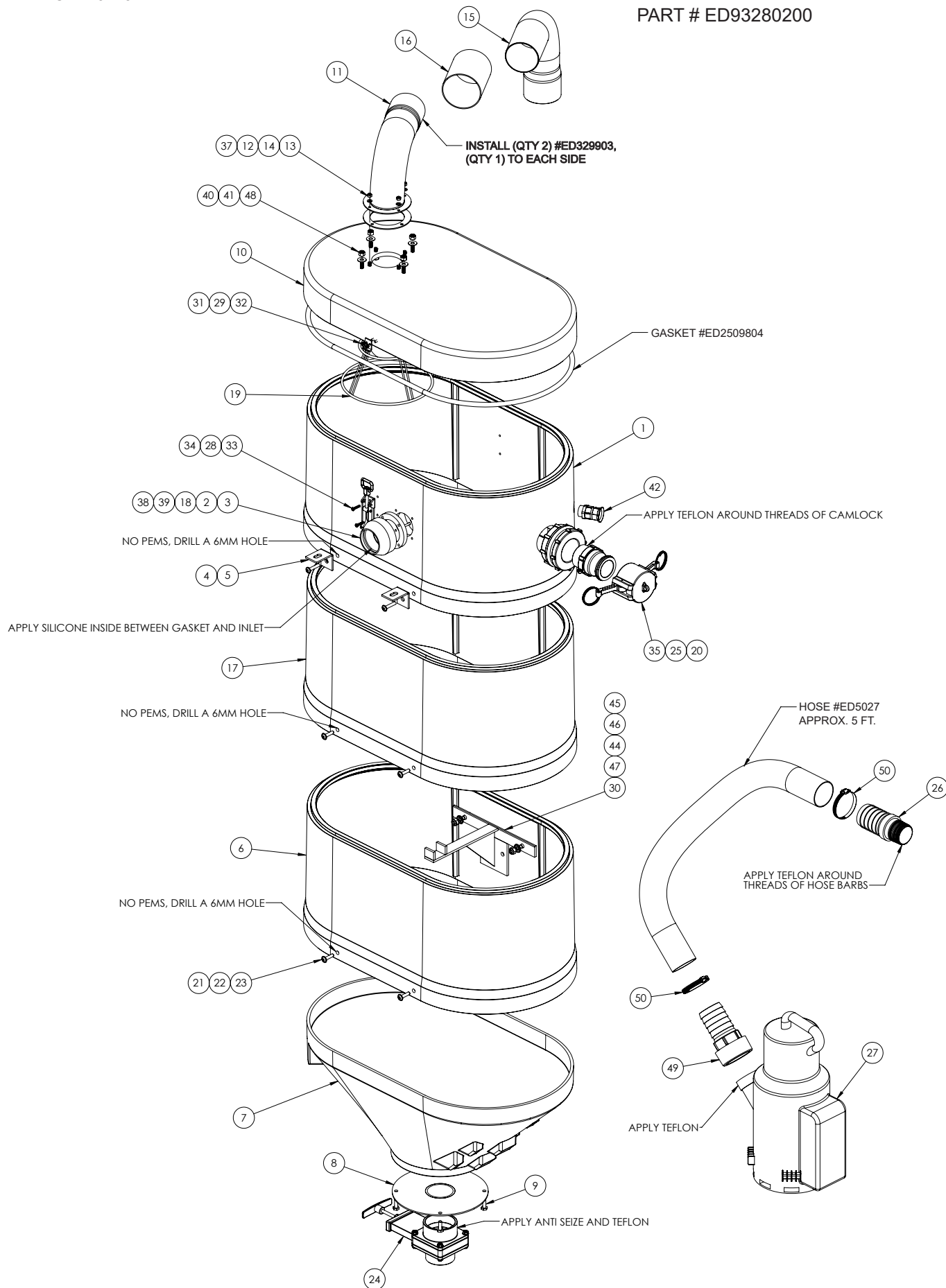
PARTS LISTING			
ILLUSTRATION 6: MOTOR HEAD ASSEMBLY, 120V, 1200 WATT			
ITEM #	PART #	DESCRIPTION	QTY.
1	ED27015	HOUSING COVER, SINGLE MOTOR	1
2	ED27014	MOTOR HOUSING, SINGLE MOTOR	1
3	ED8004	SUPPORT RING, SINGLE MOTOR	1
4	ED27002	MOTOR, 120V, 1200 WATT	1
	ED33327	REPLACEMENT BRUSHES: BRUSH SET, ELECTRO MOTOR	1
	ED33326	BRUSH SET, AMETEK MOTOR	1
5	ED27007	SEPARATOR PLATE, WNS MOTOR HEAD	1
6	ED2509811R	MOTOR HEAD GASKET	1
7	ED27001	MOTOR HEAD, ALUMINUM	1
8	ED27004	GASKET FOR MOTOR HEAD, WNS	1
9	ED27012	SCREW #8 X 1/2" PHIL PAN HEAD, ZINC	3
10	ED27017	SWITCH, ROCKER, 1000/1200W	1
11	ED25211	MALE IEC PLUG	1
12	ED27003	SCREW #8 X 2" PHIL PAN HEAD, ZINC	6
13	ED32989	HEX WASHER TEX SCREW, #10-16, .625LG	1
14	ED27011	SCREW, #6 X 0.5	2
15	ED31715	TERMINAL, 90 DEG, 16-14 GA. BLUE	2
16	ED8021	PROTECTION SCREEN, MOTOR HEAD	1
17	ED25064	SCREW PHIL PH #8 X 5/8" ZINC	2



WIRE DIAGRAM

ILLUSTRATION 7: SLURRY COLLECTION ASSEMBLY

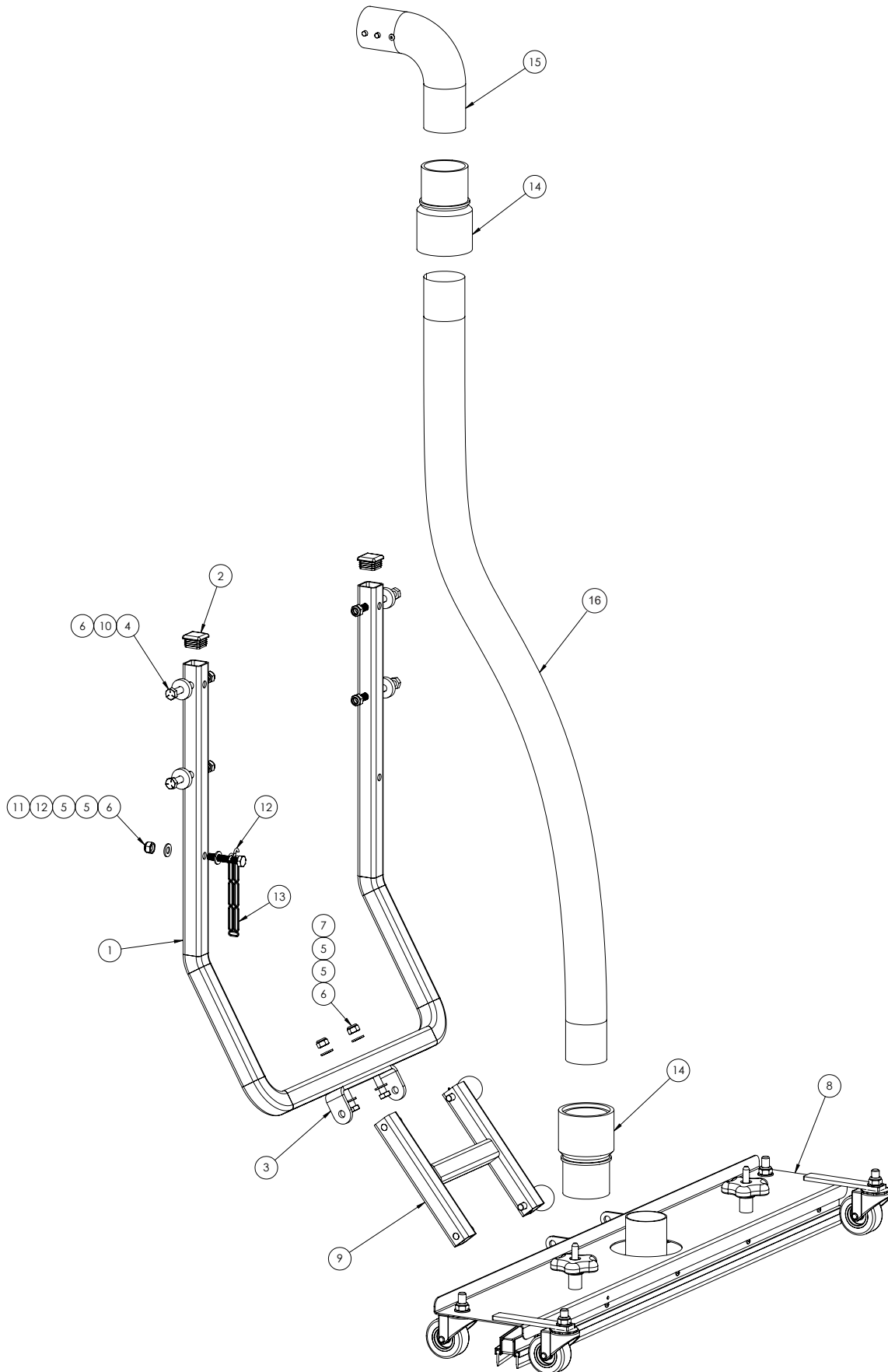
PART # ED93280200



PARTS LISTING - ILLUSTRATION 7: SLURRY COLLECTION ASSEMBLY			
ITEM #	PART #	DESCRIPTION	QTY.
1	ED34820019	HOUSING SPACER, D1, LRG, RED, SLURRY INLET RING	1
2	ED34885	GASKET 3120, 3/8" THICK, 50MM INLET	1
3	ED20006	INLET, 50MM, ALUMINUM	1
4	ED21464	SCREW M6 X 30 SOC HD, FLANGED	4
5	ED5650531	BENT SILO SUPPORT, M8	4
6	ED34820021	HOUSING SPACER, D1, LRG, RED, SLURRY COLL. BRKT. MOUNT	1
7	ED21497	CONE, D1W2, 200MM OPENING, RED	1
8	ED884021	MX360 DISCHARGE PLATE	1
9	ED200179	HEX BOLT 1/4-20 X 3/4" SS	4
10	ED90223003	LID, RED, SLURRY VAC	1
11	ED9043703	ELBOW, 90, 2.75IN, SWEDGED, FLANGED	1
12	ED34821	70MM INLET GASKET	1
13	ED34875S	NUT LOCK SS, M5	4
14	ED328669	WASHER FLAT SS, M5	4
15	ED9043705	ELBOW, 90, 2.75IN, 3IN OD, BL	1
16	ED90251PS	SHRINK SLEEVE, 3IN	1
17	ED34820020	HOUSING SPACER, D1, LRG, RED, SLURRY COLLECTION	1
18	ED9940103	IMMERSION TUBE WELDMENT, SLURRY VAC	1
19	ED372902	FLOAT ASSEMBLY, PLASTIC FLOAT, 5.5IN PLUNGER ROD	1
20	ED27914	BULKHEAD, 1.5IN, TXT, POLYPRO	1
21	ED34876	M6 LOCK NUT	12
22	ED25067	WASHER FLAT M6	12
23	ED3481701	SCREW, SOC BH, FLANGED, M6-25	8
24	ED31910	GATE VALVE, 2IN MNPT X FNPT, PVC, BLK	1
25	ED27906	CAMLOCK, 1.5MNPT, POLY	1
26	ED27969	ADAPTER, PVC, 1.5IN MNPT X 2IN BARB	1
27	ED9316004	PUMP, SUBMERSIBLE, .5 HP, 115V/230V, 1P, SLURRY VAC	1
28	ED31406	PULL CLAMP, LEVER SIDE	2
29	ED31407	LATCH HOOK FOR PULL CLAMP	2
30	ED9316003	PUMP BRACKET, HEAVY DUTY, SLURRY VAC	1
31	ED25048	SCREW, PHILIPS, FLAT HEAD, #8-32	4
32	ED25049	#8-32 HEX NUT, ZINC	4
33	ED2503914	#6-32 x .750 Pan Head Philips Screw	4
34	ED2503912	NUT HEX LOCK #6-32	4
35	ED27910	DUSTCAP, 1.5IN, CAMLOCK	1
36	-	NO PART FOR THIS ITEM #	-
37	ED32995SS	SCREW, FLAT HEAD, HEX DRIVE, M6 X 25 SS	4
38	ED32870S	SCREW, SOC HD CAP M4 X 25 SS	4
39	ED328667S	WASHER, FLAT, M4, SS	4
40	ED250053S	HEX BOLT 1/4-20 X 1" SS	4
41	ED200180	WASHER FLAT .25 (.688OD) SS	8
42	ED34955	CABLE GRIP, PG16, WITH WIRE CLAMP	1
43	-	NO PART FOR THIS ITEM #	-
44	ED312506	WASHER, .3125, SEALING	2
45	ED34882	WASHER FLAT/THIN M8 ZINC	2
46	ED31222	BOLT HEX 5/16-18 X 1 1/4"	2
47	ED31202	5/16-18 LOCK NUT	2
48	ED250025S	NUT LOCK .25-20, SS	4
49	ED27970	ADAPTER, PVC, 2IN FNPT X 2IN BARB	1
50	ED4024	HOSE CLAMP, 1.8 TO 2.75 MAX	2

ILLUSTRATION 8: 32 INCH FLOOR TOOL

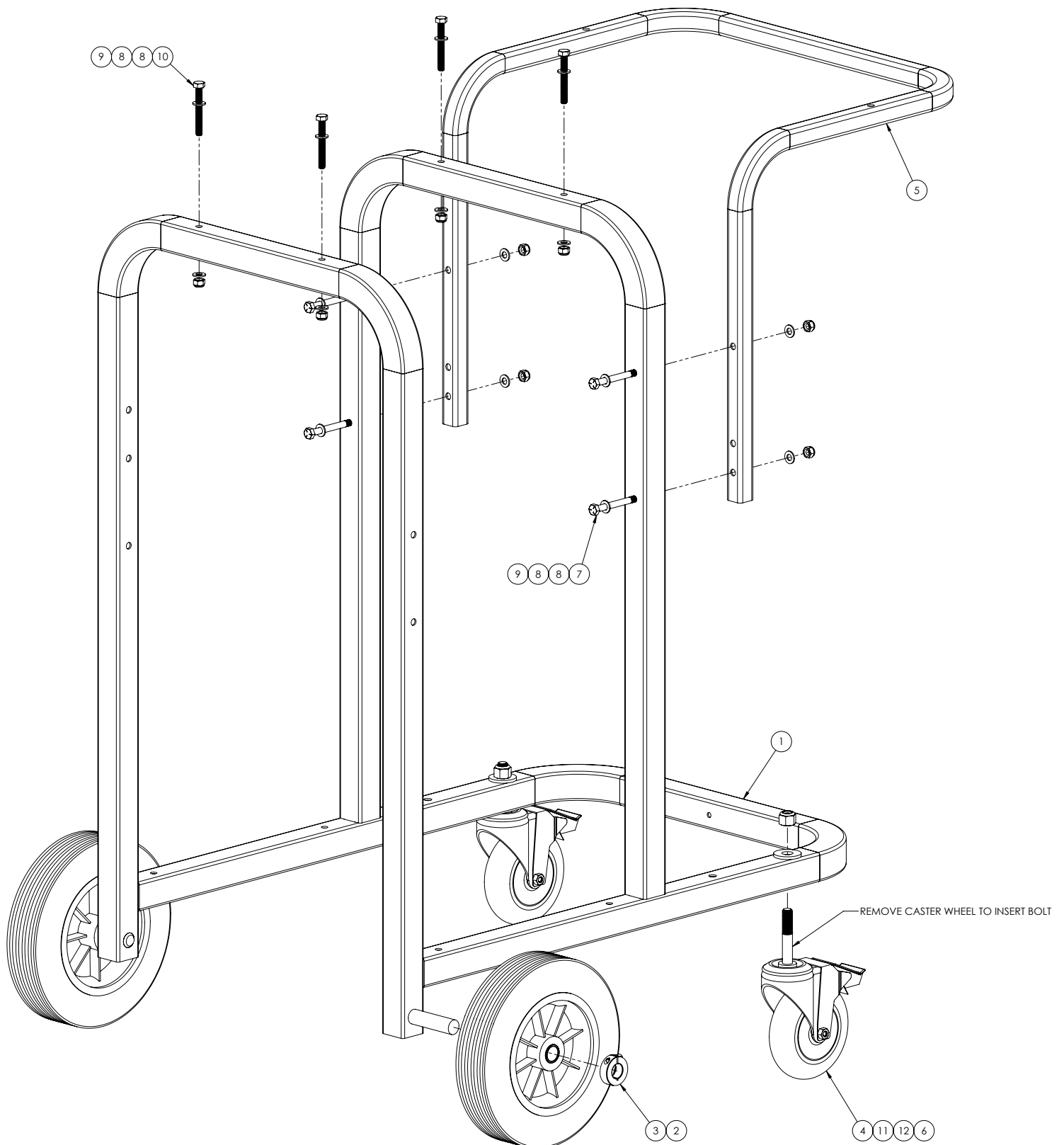
PART # ED5018SLRY



PARTS LISTING			
ILLUSTRATION 8: 32 INCH FLOOR TOOL			
ITEM #	PART #	DESCRIPTION	QTY.
1	ED565304	SQUARE HANDLE BAR, DB FRAME	1
2	ED8010	END CAP, PLASTIC PLUG, 1IN X .095IN, SERRATED	2
3	ED970209	H-BRACKET MOUNT	1
4	ED312505	BOLT, HEX HEAD, .3125-18, 3.25LG, ZINC	4
5	ED25061	M8 FLAT WASHER	6
6	ED31202	5/16-18 LOCK NUT	7
7	ED31211	BOLT, HEX, 5/16-18 X 2"	2
8	ED501833	FLOOR SWEEP ASM, 32IN, 50MM, LIQUID PICK-UP	1
9	ED9702A	SWIVEL CART CONNECTION	1
10	ED2258002	SPACER, PVC, .875" OD X .3125" X .250 LG	4
11	EDHW4005A03	HEX BOLT, 5/16-18 X 1 3/4"	1
12	ED25035	S-HOOK, 1-.250 X .105	2
13	ED25041101	CHAIN, JACK SIZE 12, ZINC, 9IN	1
14	ED5014B	HOSE CUFF, 2", CRUSH PROOF	2
15	ED90183-BL	ELBOW, 90, 2IN, BUTTON LOCK	1
16	ED5027	HOSE	4 FT

ILLUSTRATION 9: DOUBLE STACK FRAME ASSEMBLY

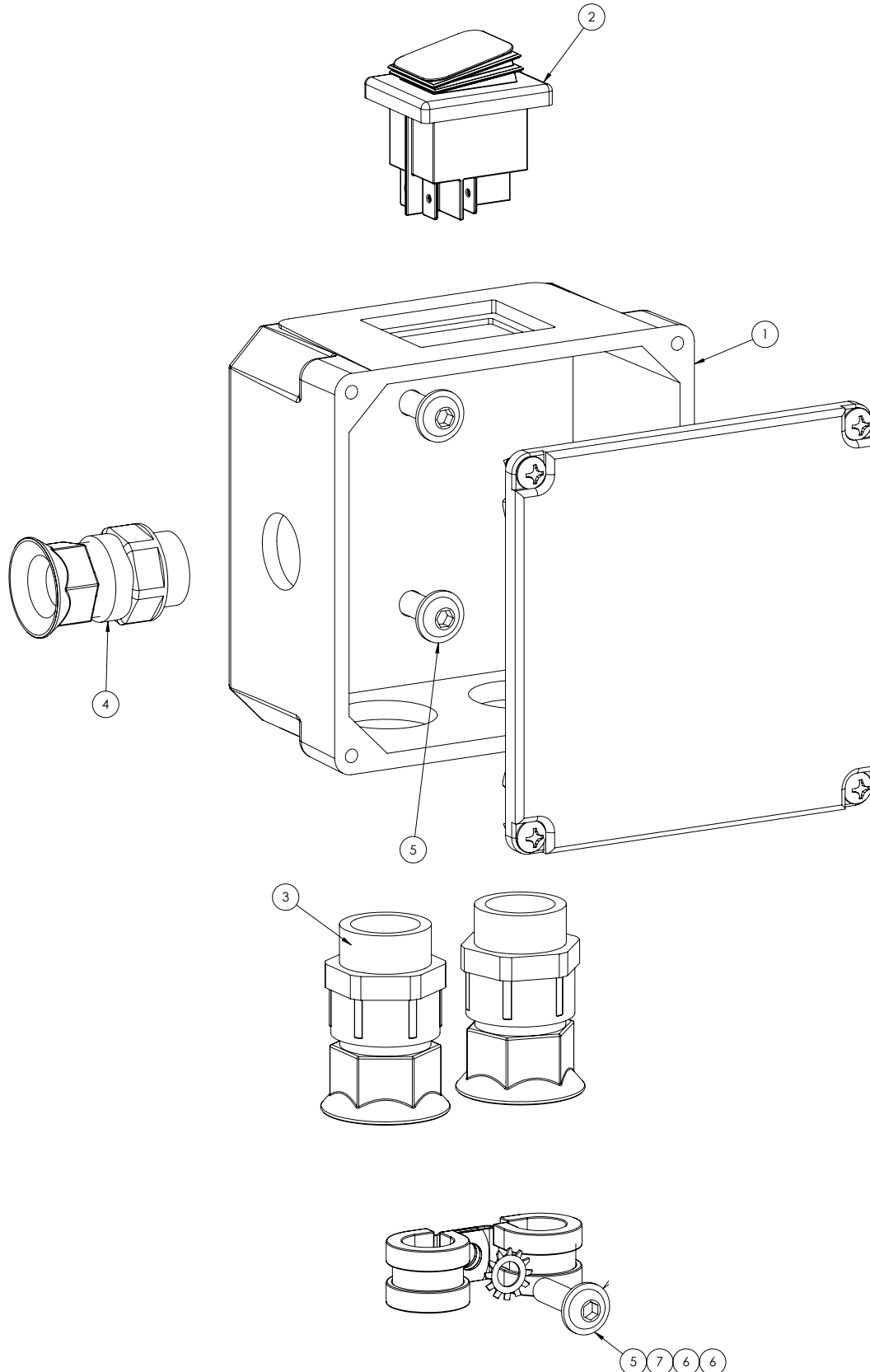
PART # ED93280500



PARTS LISTING			
ILLUSTRATION 9: DOUBLE STACK FRAME ASSEMBLY			
ITEM #	PART #	DESCRIPTION	QTY.
1	ED565302	DIRECT BAGGER FRAME, DOUBLE STACK	1
2	ED31848	CASTER, 10IN X 2.75, SOLID TIRE	2
3	ED31801	SHAFT COLLAR, .75IN	2
4	ED30204	CASTER, SWIVEL, 5IN, BOLT HOLE	2
5	ED565306	DOUBLE STACK HANDLE BAR	1
6	ED500045	LOCK NUT 1/2-13	2
7	ED312505	BOLT, HEX HEAD, .3125-18, 3.25LG, ZINC	4
8	ED25061	M8 FLAT WASHER	16
9	ED31202	5/16-18 LOCK NUT	8
10	ED31207	BOLT, HEX, 5/16 - 18 X 2 1/2"	4
11	ED500011	BOLT, HEX, .5-13, 3LG, ZINC	2
12	ED50001	FLAT WASHER 1/2"	2

ILLUSTRATION 10: SWITCH ENCLOSURE ASSEMBLY

PART # EDE989NNJ04



PARTS LISTING			
ILLUSTRATION 10: SWITCH ENCLOSURE ASSEMBLY			
ITEM #	PART #	DESCRIPTION	QTY.
1	E989NNJA01	ENCLOSURE, PVC, 4IN X 4IN X 2.5IN, SLURRY VAC	1
2	ED2701701	SWITCH, ROCKER, MOMENTARY, SLURRY VAC	1
3	ED34955	CABLE GRIP, PG16, WITH WIRE CLAMP	2
4	ED34862	PG11 CABLE GLAND	1
5	ED34817	SCREW ULS SOC HD M6 X 20	3
6	ED25329	CLAMP, .5IN HOSE, ZINC, CUSHIONED	2
7	ED25000	WASHER EXT STAR .25IN	1

NOTES

Record here any repairs or changes made to the Equipment

LIMITED EQUIPMENT WARRANTY OF SALE

Equipment Development Company, Inc. herein referred to as EDCO (Seller) warrants that each new unit manufactured by EDCO to be free from defects in material and workmanship in normal use and service for a period of (1) one year (except for the cutter drum assembly on all model concrete/asphalt planers AND the chisel head assembly on all model ALR's & ALR-BS in which case the warranty period shall be 90 days) from date of shipment to the original retail or equipment rental center owner.

Accessories or equipment furnished and installed on the product by EDCO but manufactured by others, including, but not limited to engines, motors, electrical components, transmissions etc., shall carry the accessory manufacturers own warranty.

EDCO will, at its option, repair or replace, at the EDCO factory or at a point designated by EDCO, any part which shall appear to the satisfaction of EDCO inspection to have been defective in material or workmanship.

EDCO reserves the right to modify, alter and improve any part or parts without incurring any obligation to replace any part or parts previously sold without such modified, altered or improved part or parts.

This warranty is in lieu of and excludes all other warranties, expressed, implied, statutory, or otherwise created under applicable law including, but not limited to the warranty of merchantability and the warranty of fitness for a particular purpose in no event shall seller or the manufacturer of the product be liable for special, incidental, or consequential damages, including loss of profits, whether or not caused by or resulting from the negligence of seller and/or the manufacturer of the product unless specifically provided herein. In addition, this warranty shall not apply to any products or portions thereof of which have been subjected to abuse, misuse, improper installation, maintenance, or operation, electrical failure or abnormal conditions and to products which have been tampered with, altered, modified, repaired, reworked by anyone not approved by seller or used in any manner inconsistent with the provisions of the above or any instructions or specifications provided with or for the product.

TERMS AND CONDITIONS (NOT APPLICABLE TO SALES THROUGH AUTHORIZED DISTRIBUTION)

FORCE MAJEURE

Seller's obligation hereunder are subject to, and Seller shall not be held responsible for, any delay or failure to make delivery of all or any part of the Product due to labor difficulties, fires, casualties, accidents, acts of the elements, acts of God, transportation difficulties, delays by a common carrier, inability to obtain Product, materials or components or qualified labor sufficient to timely perform part of or all of the obligations contained in these terms and conditions, governmental regulations or actions, strikes, damage to or destruction in whole or part of manufacturing plant, riots, terrorist attacks or incidents, civil commotions, warlike conditions, flood, tidal waves, typhoon, hurricane, earthquake, lightning, explosion or any other causes, contingencies or circumstances within or without the United States not subject to the Seller's control which prevent or hinder the manufacture or delivery of the Products or make the fulfillment of these terms and conditions impracticable. In the event of the occurrence of any of the foregoing, at the option of Seller, Seller shall be excused from the performance under these Terms and Conditions, or the performance of the Seller shall be correspondingly extended.

This document sets forth the terms and conditions pursuant to which the purchaser ("Purchaser") will purchase and Equipment Development Co. Inc. ("Seller") will sell the products, accessories, attachments (collectively the Products) ordered by the Purchaser. These terms and conditions shall govern and apply to the sale of Seller's Products to Purchaser, regardless of any terms and conditions appearing on any purchase order or other forms submitted by Purchaser to Seller, or the inconsistency of any terms therein and herein.

1. PRICE

All prices set forth on any purchase order or other document are F.O.B. Sellers facility or distribution point, as may be determined by Seller (F.O.B. Point). All prices are exclusive of any and all taxes, including, but not limited to, excise, sales, use, property or transportation taxes related to the sale or use of the Products, now or hereafter imposed, together with all penalties and expenses. Purchaser shall be responsible for collecting and/or paying any and all such taxes, whether or not they are stated in any invoice for the Products. Unless otherwise specified herein, all prices are exclusive of inland transportation, freight, insurance and other costs and expenses relating to the shipment of the Products from the F.O.B. point to Purchaser's facility. Any prepayment by Seller of freight insurance and other costs shall be for the account of Purchaser and shall be repaid to Seller.

2. PAYMENT TERMS

Payment terms are as follows. 2% 10 days (to approved and qualified accounts). Net 30 days. This is a cash discount for invoices paid within 10 days after the invoice date, regardless of date of receipt of shipment. This is not a trade discount and will not be granted to accounts that do not adhere to stated terms.

*All past due accounts are subject to a late payment fee of 1.5% per month or a maximum allowed by law if different, along with the expenses incidental to collection including reasonable attorney's fees and costs.

*Seller reserves the right to hold shipments against past due accounts.

*Seller reserves the right to alter payment terms.

3. FREIGHT TERMS

All shipments will be made F.O.B. shipping point as designated in these Terms and Conditions, and title shall pass at the F.O.B. point. Delivery to the initial common carrier shall constitute delivery to the Purchaser. Any claims for loss or damage during shipment are to be filed with carrier by the Purchaser. Seller will not assume responsibility for the performance of the carrier.

Back orders will be shipped in the most practical fashion with charges consistent with our freight policy established with the original order. UPS, FED EX, MAIL or shipments by other couriers are subject to the same terms and conditions as outlined in paragraph #3 "Freight Terms".

4. DELIVERY, DAMAGES, SHORTAGES

Seller shall use reasonable efforts to attempt to cause the Products to be delivered as provided for in these Terms & Conditions. Delivery to the initial common carrier shall constitute the delivery to the Purchaser. Seller's responsibility, in so far as transportation risks are concerned ceases upon the delivery of the Products in good condition to such carrier at the F.O.B. point and all the Products shall be shipped at the Purchaser's risk. Seller shall not be responsible or liable for any loss of income and/or profits, or incidental, special, consequential damages resulting from Seller's delayed performance in shipment and delivery.

5. RETURN OF DEFECTIVE PRODUCTS

Defective or failed material shall be held at the Purchaser's premises until authorization has been granted by Seller to return or dispose of Products. Products that are to be returned for final inspection must be returned Freight Prepaid in the most economical way. Credit will be issued for material found to be defective upon Seller's inspection based on prices at time of purchase.

6. PRODUCTS ORDERED IN ERROR

Products may be returned, provided that claim is made and Seller is notified within 7 days of receipt of Products, and the Products are in original buyer's possession not more than 30 days prior to return, subject to Seller's approval. If Products are accepted for return, they must be Freight Prepaid and buyer will be charged a minimum of 15% restocking charge, plus a charge back for outbound freight charges if the original order was shipped prepaid. Returns are not accepted for any Products that are specifically manufactured to meet the buyer's requirement of either specifications or quantity.

AGREEMENTS

These Terms and Conditions constitute the entire agreement between Seller and Purchaser as it relates to terms and conditions of sale, and supersedes any and all prior oral or written agreements, correspondence, quotations or understandings heretofore in force between the parties relating to the subject matter hereof. There are no agreements between Seller and Purchaser with respect to the Product herein except those specifically set forth in and made part of these terms and conditions. Any additional terms, conditions and/or prices are rejected by Seller.

These terms and conditions may be modified, cancelled or rescinded only by a written agreement of both parties executed by their duly authorized agents.

USE ONLY GENUINE EDCO PARTS & ACCESSORIES
For your own safety, the safety of others and the life of your machine.

SUBMIT ALL WARRANTY CLAIMS AT:

edcoinc.com/customer-support/warranty-claim-form/



BEFORE USING THIS PRODUCT

Have You Used EDCO's Online Customer Support??



Scan This QRC or Visit
www.edcoinc.com/customer-support



READ: **EDCO Owner's Manuals and Parts Listings** share basic information and parts of each product. Download and print them whenever needed.



WATCH: **EDCO Product Training Videos** show how to use products, install tooling, and perform basic maintenance.



Example Only

FIND: Somewhere on this product is an **EDCO QRC Training Decal**. Scanning this code provides owner's information, videos, and other training content anywhere/anytime on your mobile device.



JOIN: **EDCOed.com** is a free, 24-hour training space. Each certification track focuses on a specific EDCO product group. The information in these tracks help businesses be successful with those products.

EDCO is always updating online training / information so you always have the most recent content.

Also see Operator's Safety & Limited Warranty Manual

Equipment Development Co., Inc. • 800.638.3326 • techsupport@edcoinc.com