

STARTING WITH
SERIAL # 090110103

PARTS LIST MANUAL

MODEL SPTS12



12" SELF-PROPELLED TILE SHARK FLOOR STRIPPERS

SKU #	MODEL #	POWER OPTION
94600	SPTS12-1.5B	BALDOR ELECTRIC MOTOR 1.5HP 60Hz 1-PHASE
94600-50	SPTS12-2B/50	BALDOR ELECTRIC MOTOR 2.0HP 50Hz 1-PHASE



100 Thomas Johnson Drive, Frederick, MD 21702-4600 USA
 Phone (301) 663-1600 • 1-800-638-3326
 Fax (301) 663-1607 • 1-800-447-3326
 Website: www.edcoinc.com
 Email: sales@edcoinc.com

Printed in USA
©2009

READ AND UNDERSTAND THE OPERATORS INSTRUCTION MANUAL THOROUGHLY BEFORE ATTEMPTING TO OPERATE THIS EQUIPMENT. Death or serious injury could occur if this machine is used improperly.



SAFETY MESSAGES



The safety instructions are preceded by a graphic alert message of DANGER, WARNING, or CAUTION.



Indicates an imminent hazard which, if not avoided, will result in death or serious injury.



Indicates an imminent hazard which, if not avoided, can result in death or serious injury.



Indicates hazards which, if not avoided, could result in serious injury and or damage to the equipment.

GASOLINE Powered Equipment



- Do not operate gasoline powered equipment without adequate ventilation. Carbon monoxide is an invisible, odorless gas that can kill.

ELECTRICAL Powered Equipment



- ELECTRICAL HAZARD** - Be sure equipment is properly grounded. Failure to comply could kill or result in serious injury.



The engine exhaust from this product contains chemicals known to the State of California to cause cancer, birth defects or other reproductive harm.

GENERAL INSTRUCTIONS



- You must read and understand the operators instruction manual and all other manuals associated with this machine. For your safety and the safety of others around you, it is extremely important to fully understand how to operate this machine in the way it was intended. Different model machines or older/newer versions of the same model may have different parts and controls that you need to understand. If instructions are not readable or available DO NOT USE this machine and contact the factory for a replacement Manual.
- You must be able to physically handle the bulk weight and power of this machine. If not properly controlled this machine can cause death or serious injury.
- Do not operate this machine in an impaired mental state. You must be able to exercise good judgement and reactions to maintain a safe working environment.
- This is a "one person" machine which means only one operator can be operating the machine at any one time. For the safety of others, maintain a safe operating distance to other personnel. Your work area should be defined and appropriately marked so bystanders and coworkers do not stand or walk near this machine and end up seriously injured by flying debris or exposing them to harmful noise or dust.
- This equipment is for Commercial use. Although this is a "one person" machine your work team should understand how to shut this machine off and quickly get medical help if an accident strikes the operator.
- Keep all guards in place during operation. The guards are to provide protection from inadvertent contact with dangerous moving parts, pinch points, or hot surfaces.
- Wear appropriate Personal Protective Equipment (PPE) including safety glasses, safety boots, work gloves, respiratory protection, hearing protection, and head protection. Do not wear loose clothing that can get tangled in moving parts. Failure to do so could result

in dismemberment or death. **Wear an approved respirator when removing hazardous materials or when grinding/cutting dry materials. Some dust particles such as concrete dust can contain silicate particles which can cause silicosis (a very serious lung disease). Contact NIOSH or OSHA for further details. When wet grinding/cutting, avoid contact with the concrete/asphalt slurry which can cause serious skin irritations.**

- You must maintain this machine per the maintenance schedule in the operator manual. Remember before adjusting, servicing, or fueling this machine, disconnect the source of power to the machine by disconnecting the spark plug (Gas models), or by unplugging the electrical power cord (electric models) or air hose (Pneumatic models) AT THE MACHINE so you can assure yourself it remains unplugged while you are working on it. Do not modify this machine. Use only genuine EDCO parts and accessories. Repairs and service should be performed by approved EDCO dealers or authorized technicians.
- You should look carefully around the area before you begin work so you can identify potential hazards such as deck inserts, pipes, columns, openings, electrical cords or outlets, or any other objects protruding from the slab surface.
- This machine has no brain so you must use your own. There is no substitute for safety. The safety decals on the machine are to serve as a reminder for information you must already know before you begin using this machine. Take a moment to reread the safety decals each time you use the machine. If your machine is missing any decals, contact the factory for a replacement (EDCO 1-800-638-3326).

PARTS LIST MANUAL MODEL SPTS12

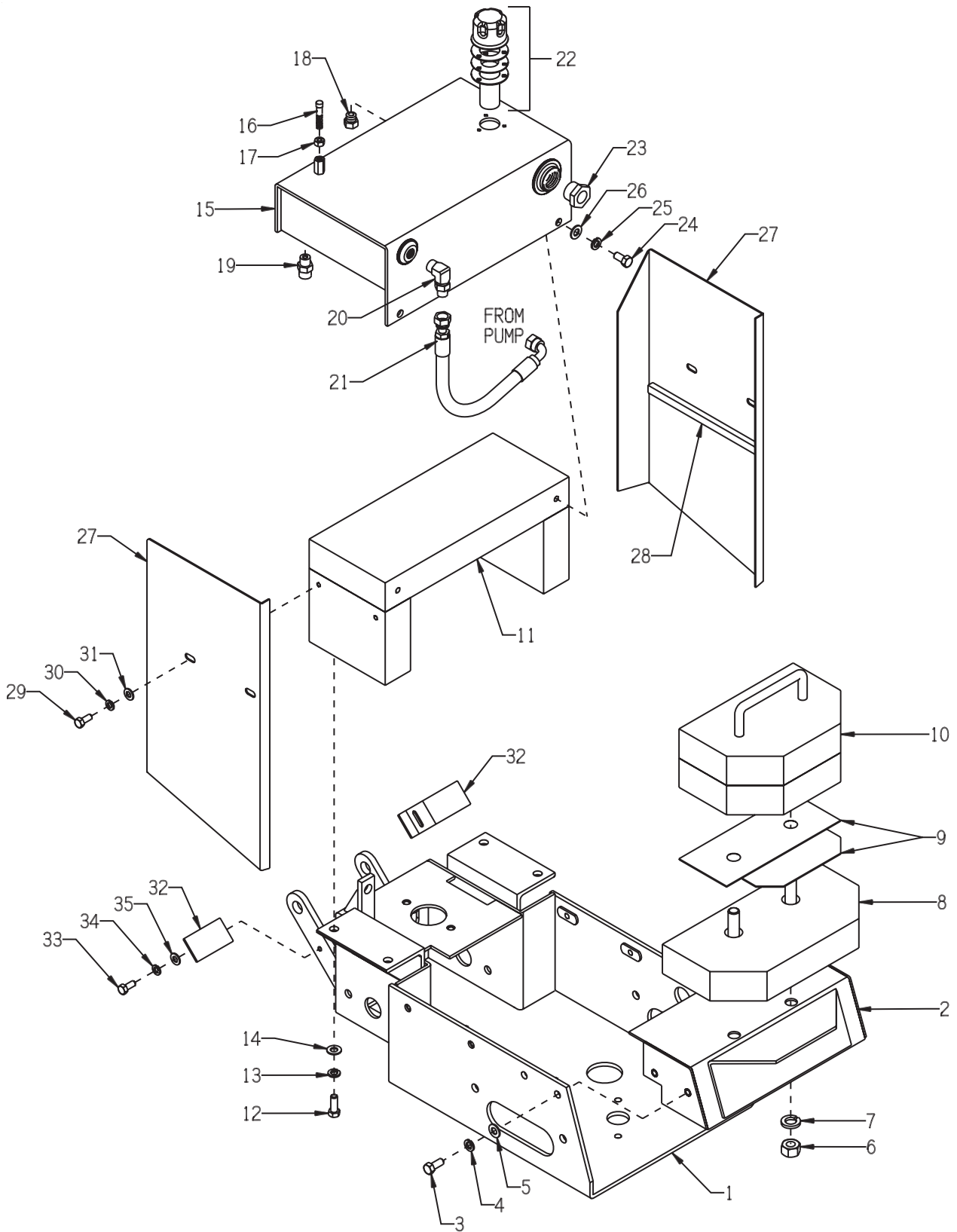
TABLE OF CONTENTS

<u>Section</u>	<u>Page Number</u>
Safety Messages & General Instructions	2
How to Order Replacement Parts	3
Illustration 1: Frame & Reservoir Grouping	4, 5
Illustration 2: Handle Bar Grouping	6, 7
Illustration 3: Drive Motor & Rear Axle Grouping	8, 9
Illustration 4: Hydraulic Pump Grouping	10, 11
Illustration 5: Filter Grouping	12, 13
Illustration 6: Hydraulic Diagram	13
Illustration 7: Blade & Striker Plate Grouping	14, 15
Illustration 8: Motor Grouping	16, 17
Illustration 9: Transport Dolly Assembly	18
Illustration 10: Ceramic Tile Chisel Kit (Optional)	19
Illustration 11: Wiring Diagram for 1.5 HP 60Hz Motor	20
Illustration 12: Wiring Diagram for 2.0 HP 50Hz Motor	21
Illustration 13: Wiring Diagram for On/Off Switch	22
Notes	23
Limited Equipment Warranty of Sale - Terms & Conditions	24 Back Cover

<p>HOW TO ORDER REPLACEMENT PARTS</p> <ul style="list-style-type: none"> ❑ To insure product safety and reliability, always use genuine EDCO replacement parts when making repairs to the equipment. ❑ When calling for parts, specify the MODEL and SERIAL number of the machine, which can be found on the NAME PLATE. Keep that information in the space provided. In addition to this information, give part number, description, and quantity as listed on the parts list to your parts representative. ❑ Please note: Due to improvements and changes in the equipment, the illustrations shown may be different than the actual machine. 	<p style="text-align: center;">FILL IN INFORMATION BELOW</p> <p>Date of Purchase _____</p> <p>Model # _____</p> <p>Serial # _____</p> <p>SKU # _____</p>
---	---

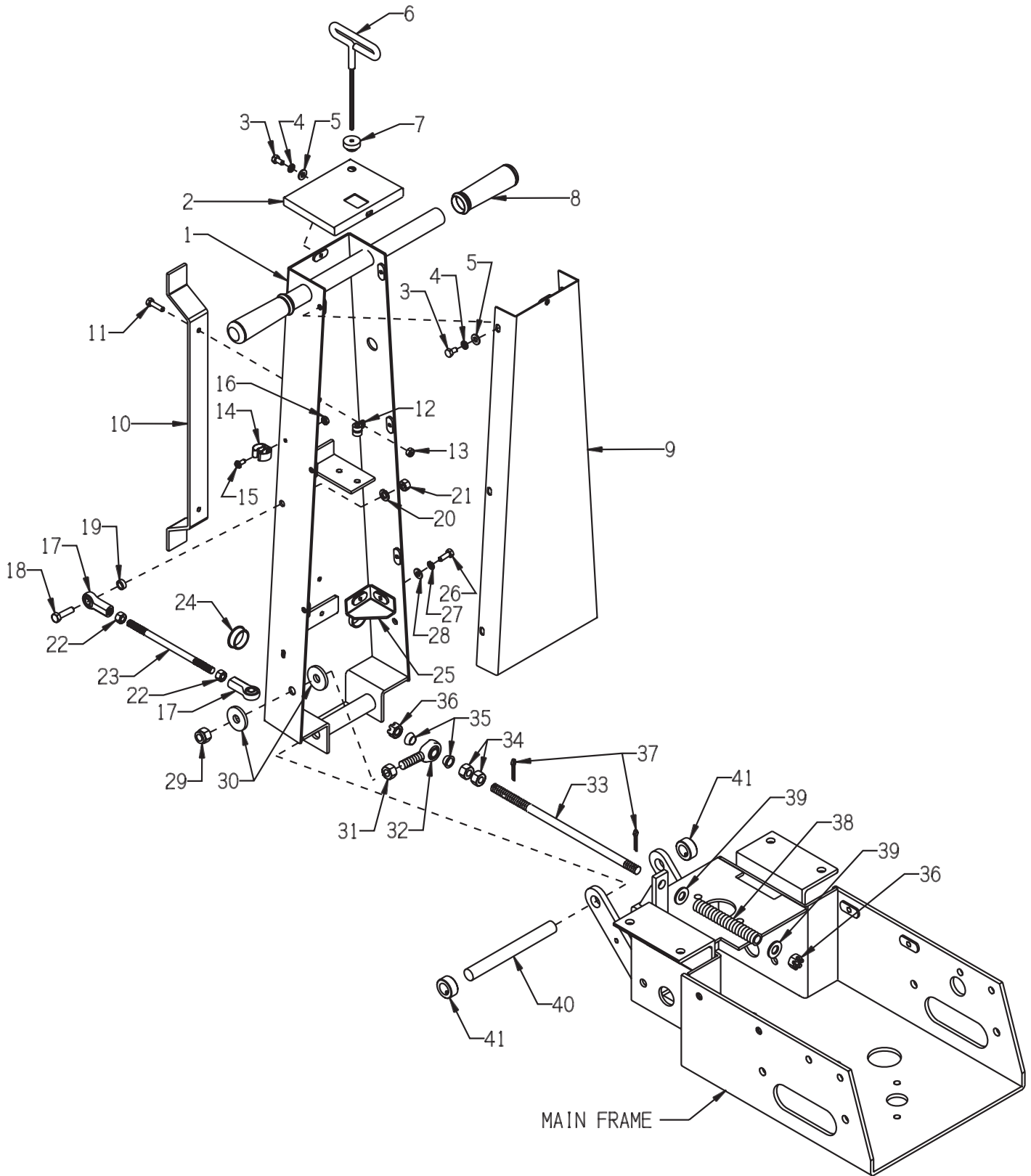


ILLUSTRATION 1 : FRAME & RESERVOIR GROUPING



PARTS LISTING - ILLUSTRATION 1: FRAME & RESERVOIR GROUPING			
ITEM #	PART #	DESCRIPTION	QTY.
1	28301	MAIN FRAME	1
2	28303	COVER (HOOD), BELT	1
3	10907	SCREW, CAP 3/8-16 X 3/4	4
4	10811	WASHER, LOCK 3/8	4
5	10025	WASHER, FLAT 3/8 SAE	4
6	10046	NUT 5/8-11	2
7	10041	WASHER, LOCK 5/8	2
8	28374	WEIGHT, FIXED (34 LBS.)	1
9	28402	RUBBER PAD, WEIGHT	1
10	28313	WEIGHT, REMOVABLE (56 LBS.)	1
11	28312	WEIGHT, SADDLE (83 LBS.)	1
12	10907	SCREW, CAP 3/8-16 X 3/4	4
13	10811	WASHER, LOCK 3/8	4
14	10025	WASHER, FLAT 3/8 SAE	4
15	28311	RESERVOIR, HYDRAULIC FLUID	1
16	28368	STUD, NEUTRAL LOCK	1
17	10054	NUT 5/16-18	1
18	28394	PLUG, EXTERNAL, 06	1
19	28389	FITTING, STRAIGHT 06,06	1
20	28391	ELBOW, 90D 06,06	1
21	28384	HOSE, HYD. 9 1/2"	1
22	28347	CAP, FILLER BREATHER W/ STRAINER (INCLUDES GASKETS & 10-32 MACHINE SCREWS)	1
23	28346	SIGHT WINDOW, FLUID LEVEL	1
24	10907	SCREW, CAP 3/8-16 X 3/4	3
25	10811	WASHER, LOCK 3/8	3
26	10025	WASHER, FLAT 3/8 SAE	3
27	28351	COVER, SADDLE WT RIGHT SIDE (FROM OPERATOR'S POSITION)	1
	28352	COVER, SADDLE WT LEFT SIDE (FROM OPERATOR'S POSITION)	1
28	28406	RUBBER STRIP 1/2 X 3/8 X 8.5	2
29	10053	SCREW, CAP 5/16-18 X 3/4	4
30	10801	WASHER, LOCK 5/16	4
31	10213	WASHER, FLAT 5/16 SAE	4
32	28317	SCRAPER, WHEEL	2
33	10053	SCREW, CAP 5/16-18 X 3/4	2
34	10801	WASHER, LOCK 5/16	2
35	10213	WASHER, FLAT 5/16 SAE	2

ILLUSTRATION 2 : HANDLE BAR GROUPING



PARTS LISTING - ILLUSTRATION 2: HANDLE BAR GROUPING			
ITEM #	PART #	DESCRIPTION	QTY.
1	28314	HANDLE BAR	1
2	28316	HANDLE BAR TOP COVER	1
3	10834	SCREW, CAP 1/4-20 X 1/2	8
4	10038	WASHER, LOCK 1/4	8
5	10602	WASHER, FLAT 1/4 SAE	8
6	28132	WRENCH, HEX KEY 3/16, T-HANDLE	1
7	28122	RUBBER PLUG, HEX KEY WRENCH	1
8	10608	GRIP, HAND 1" MODEL AT	2
9	28315	HANDLE BAR FRONT COVER	1
10	86419	HOLDER, POWER CORD	1
11	10905	SCREW, CAP 1/4-20 X 1-1/4	1
	10018	SCREW, CAP 1/4-20 X 3/4	1
12	11690	CLAMP, LOOM, 3/8"	2
13	10150	NUT, HEX NYLON LOCK 1/4-20	3
14	28357	HOLDER CLIP, NEUTRAL LOCK LINKAGE	1
15	10830	SCREW, MACHINE 10-32 X 1/2	1
16	10832	NUT, KEPS 10-32	1
17	10919	ROD END, FEMALE 3/8-24 R.H. THREAD	2
18	10816	SCREW, CAP 3/8-24 X 1-1/2	1
19	10113	SPACER, STEEL 9/16OD X 3/8ID X 7/32	1
20	10811	WASHER, LOCK 3/8	1
21	10014	NUT 3/8-24	1
22	10014	NUT 3/8-24	2
23	28367	LINKAGE, NEUTRAL LOCK	1
24	28138	PLUG, HOLE 1-1/4" (PLASTIC)	2
25	28349	GUSSET, HANDLE LINKAGE	2
26	10018	SCREW, CAP 1/4-20 X 3/4	4
27	10038	WASHER, LOCK 1/4	4
28	10602	WASHER, FLAT 1/4 SAE	4
29	10154	NUT, HEX NYLON LOCK 1/2-20	1
30	28366	WASHER, HANDLE LINKAGE	2
31	10072	NUT 1/2-20	1
32	4805	ROD END, MALE 1/2-20	1
33	28364	LINKAGE, HANDLE	1
34	10417	NUT 1/2-13	2
35	50550	SLEEVE, BRASS 1/2" TAPERED	2
36	28358	NUT, SLOTTED 1/2-13	2
37	28359	PIN, COTTER 3/32 X 1-1/2	2
38	28350	SPRING, COMPRESSION 5"L	1
39	10312	WASHER, FLAT 1/2 SAE	2
40	28342	SHAFT, HANDLE 3/4"RD X 7"L	1
41	10428	COLLAR, LOCKING 3/4"ID	2



100 Thomas Johnson Drive, Frederick, MD 21702-4600 USA

Phone (301) 663-1600 • 1-800-638-3326

Fax (301) 663-1607 • 1-800-447-3326

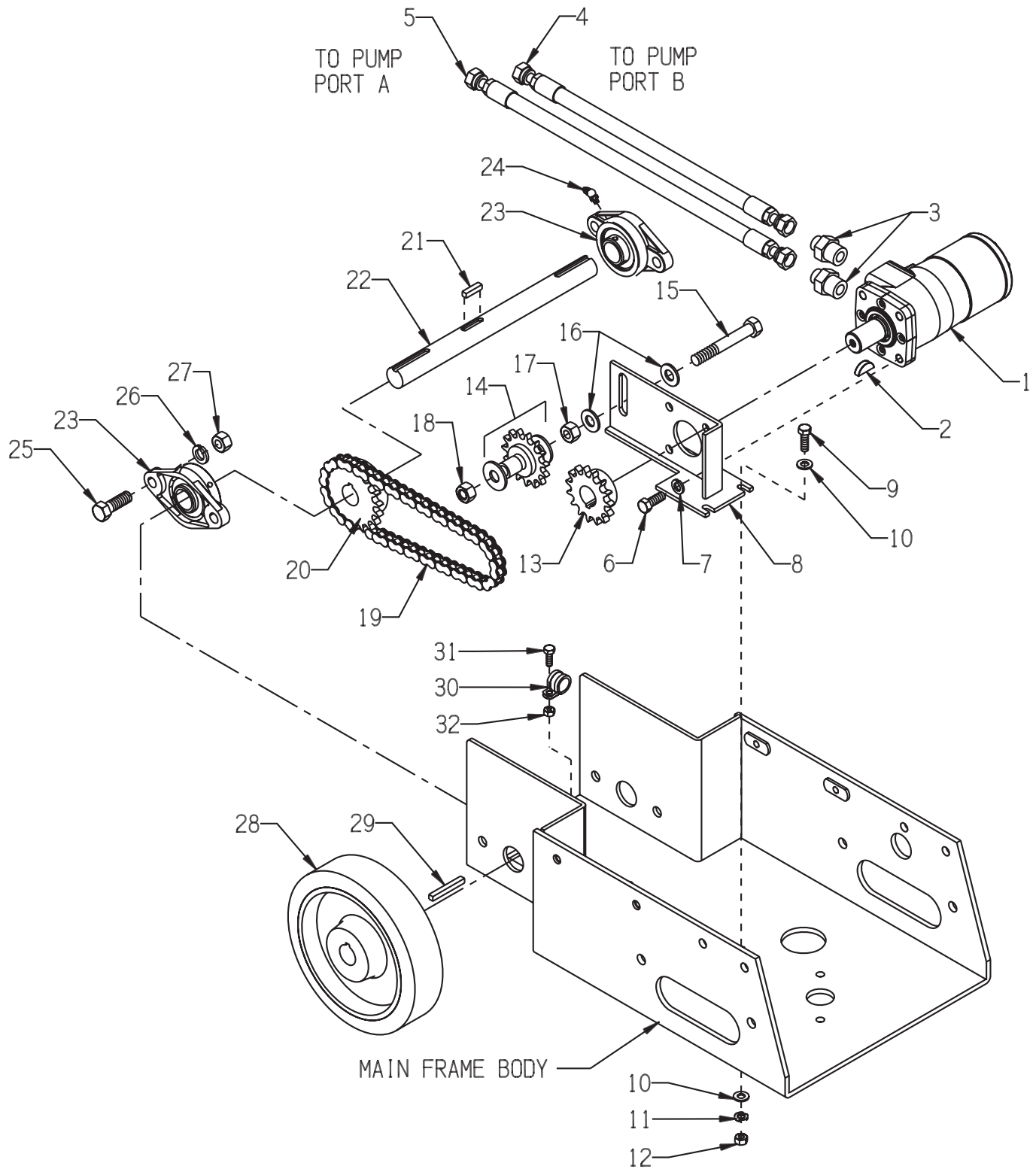
Website: www.edcoinc.comEmail: sales@edcoinc.com

Printed in USA

©2009

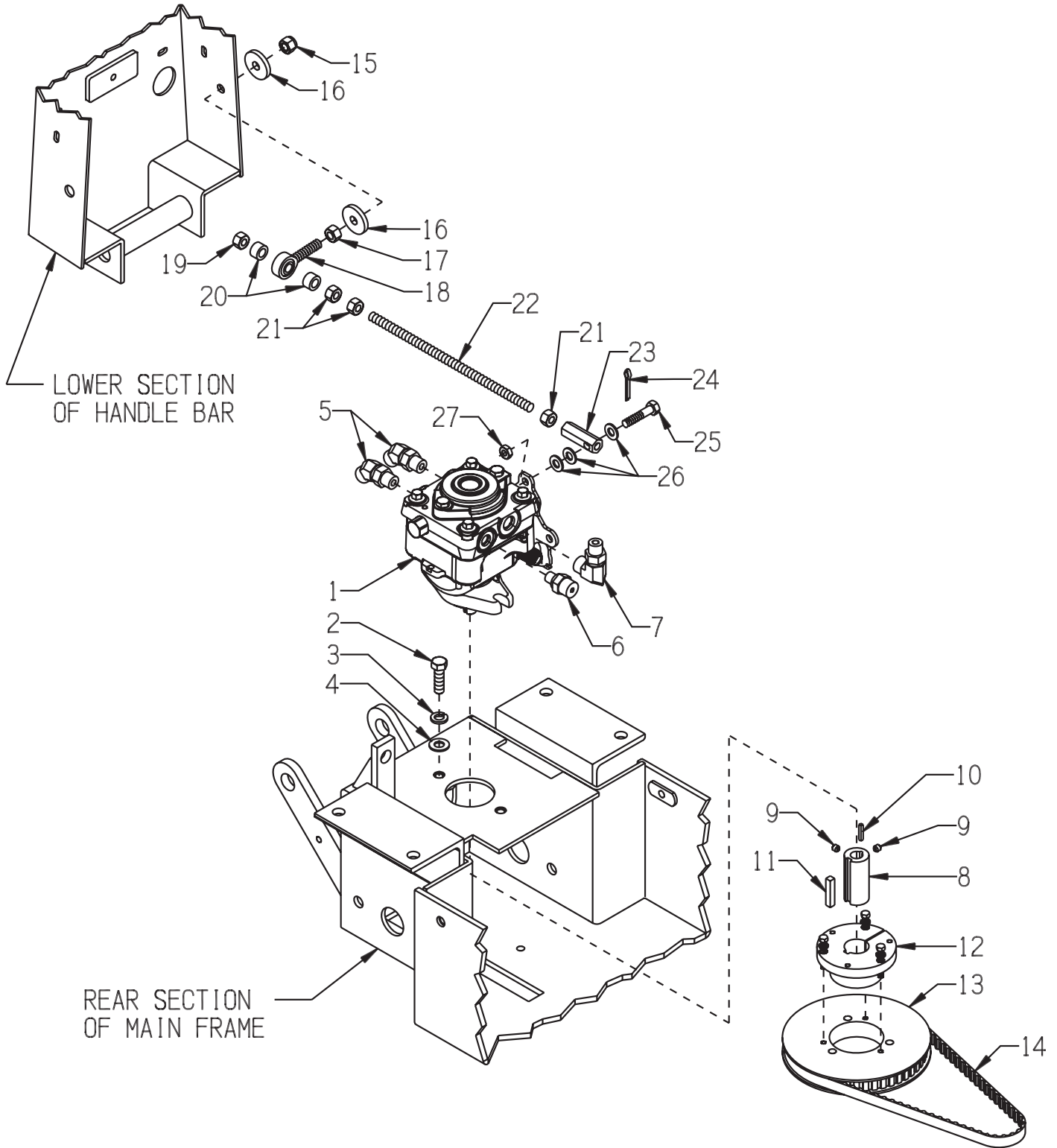
Page 7

ILLUSTRATION 3 : DRIVE MOTOR & REAR AXLE GROUPING



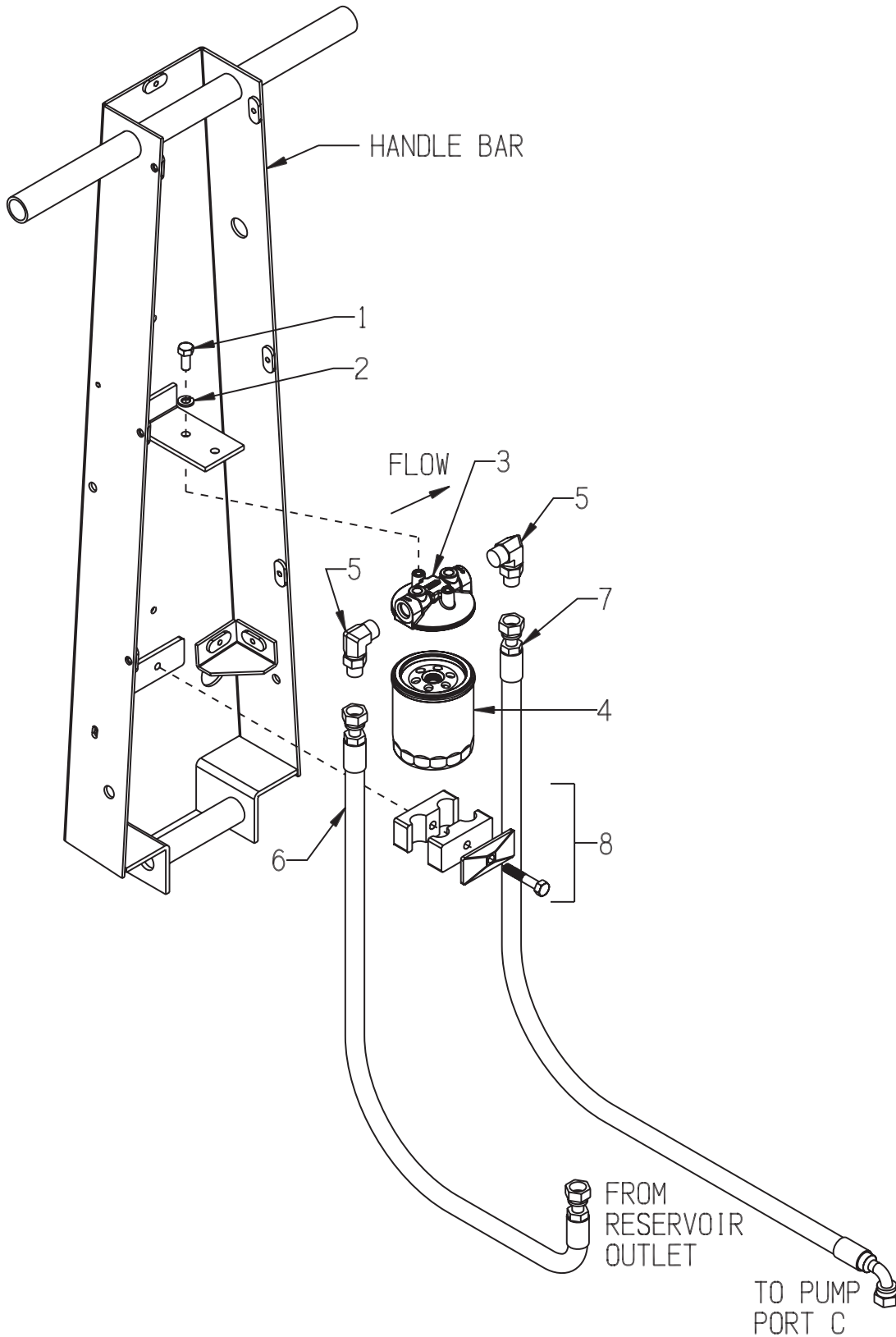
PARTS LISTING - ILLUSTRATION 3: DRIVE MOTOR & REAR AXLE GROUPING			
ITEM #	PART #	DESCRIPTION	QTY.
1	28324	MOTOR, DRIVE, EATON 101-1443-009	1
2	N/A	KEY, WOODRUF 1/4 X 1 (COMES W/ MOTOR)	1
3	28392	FITTING, STRAIGHT 06,10	2
4	28387	HOSE, HYD. 16-3/8"	1
5	28386	HOSE, HYD. 19-3/8"	1
6	10055	SCREW, CAP 3/8-16 X 1	4
7	10811	WASHER, LOCK 3/8	4
8	28309	BRACKET, DRIVE/GEAR MOTOR	1
9	10806	SCREW, CAP 5/16-18 X 1	3
10	10213	WASHER, FLAT 5/16 SAE	6
11	10801	WASHER, LOCK 5/16	3
12	10054	NUT 5/16-18	3
13	28323	SPROCKET, DRIVE #40 15-TEETH 1"BORE	1
14	28322	SPROCKET, IDLER #40 15-TEETH 1/2"B	1
15	11718	BOLT, TAP 1/2-13 X 2-1/2 (FULL THREAD)	1
16	10312	WASHER, FLAT 1/2 SAE	2
17	10417	NUT 1/2-13	1
18	10155	NUT, HEX NYLON LOCK 1/2-13	1
19	28403	CHAIN #40 X 24" + OL & CL (INCLUDES OFFSET & CONNECTING LINKS)	1
20	28329	SPROCKET, DRIVE #40 20-TEETH 1"BORE	1
21	10174	KEY 1/4SQ X 1	1
22	28318	AXLE, 1"DIA. X 12-1/4	1
23	62022	BEARING, BALL 1" 2-HOLE FLANGE	2
24	10960	FITTING, GREASE 1/4-28 X 45°	1
25	10321	SCREW, CAP 1/2-20 X 1-1/4	4
26	10045	WASHER, LOCK 1/2	4
27	10072	NUT 1/2-20	4
28	50098	WHEEL 8 X 2 X 1"BORE	2
29	10115	KEY 1/4SQ X 2	2
30	11565	CLAMP, LOOM, 5/8" (SAE SIZE 10)	1
31	10018	SCREW, CAP 1/4-20 X 3/4	1
32	10861	NUT, KEPS 1/4-20	1

ILLUSTRATION 4 : HYDRAULIC PUMP GROUPING



PARTS LISTING - ILLUSTRATION 4: HYDRAULIC PUMP GROUPING			
ITEM #	PART #	DESCRIPTION	QTY.
1	28330	PUMP, HYDRAULIC PC-ADJJ-MA1X-XXX	1
2	10055	SCREW, CAP 3/8-16 X 1	2
3	10811	WASHER, LOCK 3/8	2
4	10025	WASHER, FLAT 3/8 SAE	2
5	28388	ELBOW, 45D 06,06	2
6	28393	FITTING, STRAIGHT, 06,04	1
7	28391	ELBOW, 90D 06,06	1
8	28333	SHAFT EXTENSION, PUMP	1
9	11719	SCREW, SET 10-32 X 3/8	2
10	28404	KEY 1/8"SQ. X 9/16	1
11	10115	KEY 1/4"SQ. X 2	1
12	10043	BUSHING, SHEAVE SDS X 1"BORE	1
13	28331	PULLEY, TIMING 48L050 SDS-BORE (60 Hz MODEL)	1
	28382	PULLEY, TIMING 40L050 SDS-BORE (50 Hz MODEL)	1
14	42125	BELT, TIMING 285L050 (60 Hz MODEL)	1
	28399	BELT, TIMING 270L050 (50 Hz MODEL)	1
15	10152	NUT, HEX NYLON LOCK 3/8-24	1
16	28365	WASHER, PUMP LINKAGE	1
17	10014	NUT 3/8-24	1
18	3605	ROD END, MALE 3/8-24	1
19	10156	NUT, HEX NYLON LOCK 3/8-16	1
20	10011	SPACER, STEEL 5/8OD X 3/8ID X 3/8T	2
21	10404	NUT 3/8-16	3
22	28361	LINKAGE, PUMP 3/8-16 X 9"	1
23	28363	LINKAGE, COUPLING	1
24	11616	PIN, COTTER 3/32 X 3/4	1
25	28362	LINKAGE, SCREW	1
26	10213	WASHER, FLAT 5/16 SAE (SET-UP MAY VARY)	3
27	10151	NUT, HEX NYLON LOCK 5/16-18	1

ILLUSTRATION 5 : FILTER GROUPING



PARTS LISTING - ILLUSTRATION 5: FILTER GROUPING

ITEM #	PART #	DESCRIPTION	QTY.
1	10018	SCREW, CAP 1/4-20 X 3/4	2
2	10038	WASHER, LOCK 1/4	2
3	28338	BASE, FILTER 50207	1
4	28339	FILTER ELEMENT 51563	1
5	28391	ELBOW, 90D 06,06	2
6	28385	HOSE, HYD. 28"	1
7	28383	HOSE, HYD. 29 3/4"	1
8	28395	CLAMP, HOSE TWIN (INCLUDES BACKING PLATE WELDED IN HANDLE)	1

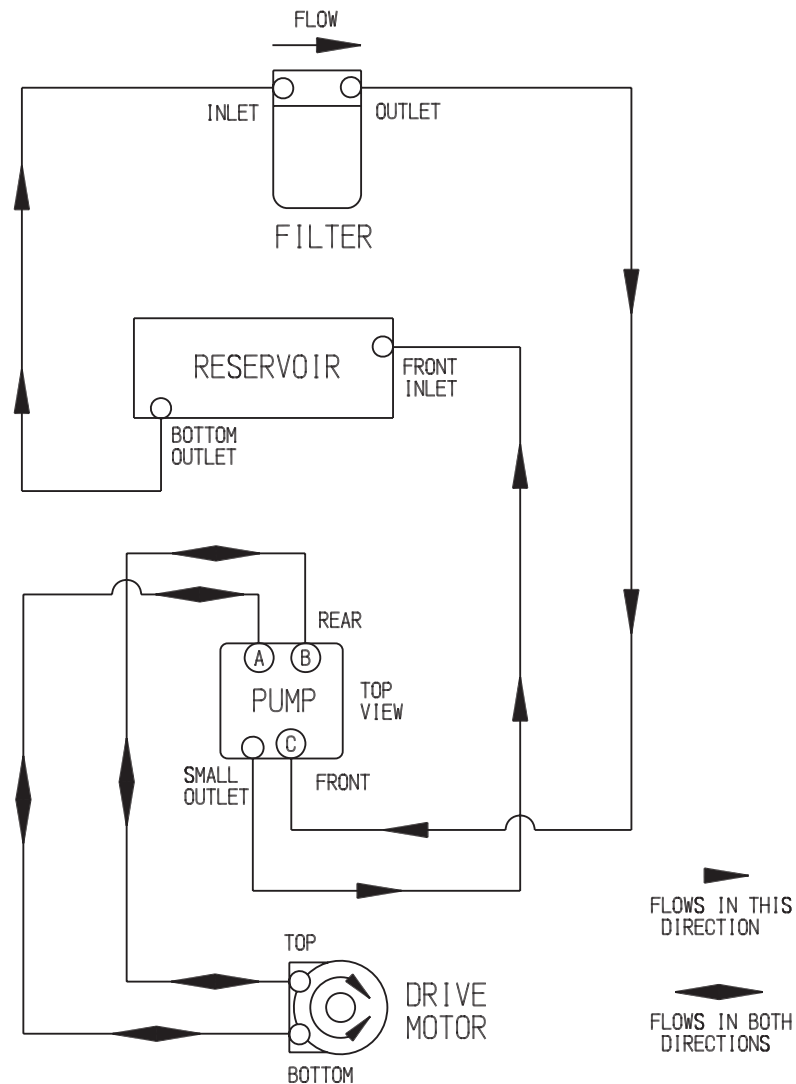
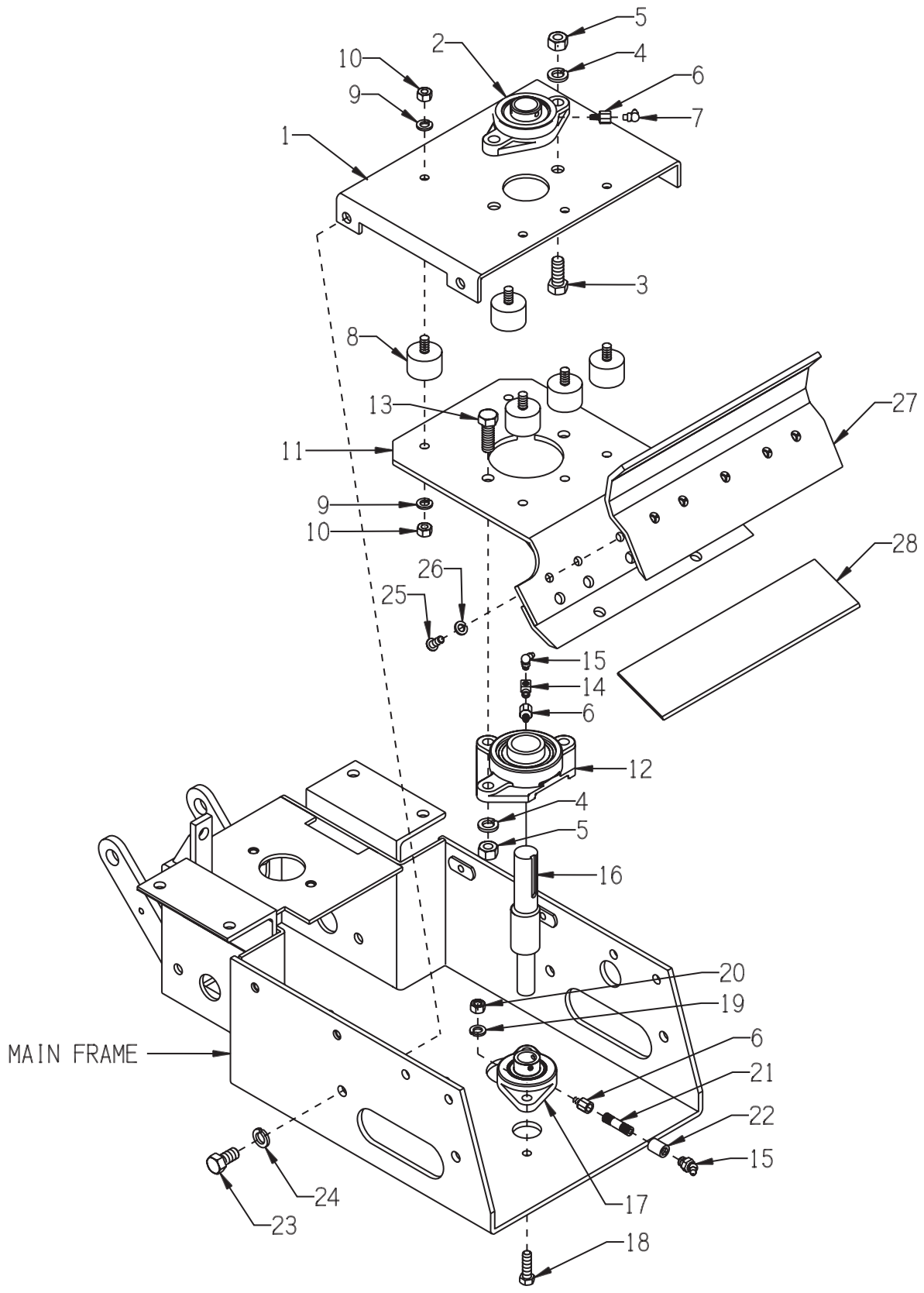
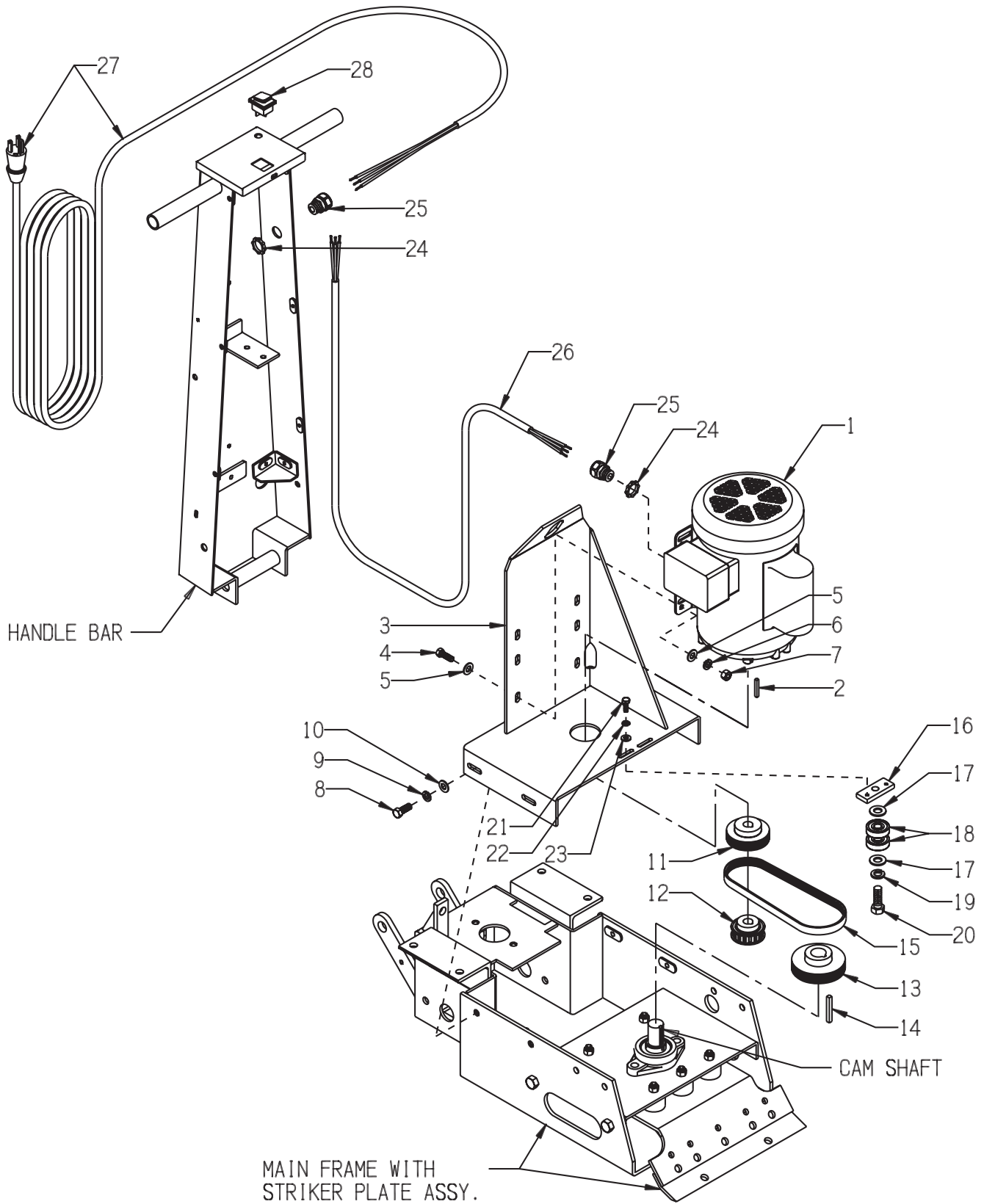
ILLUSTRATION 6: HYDRAULIC DIAGRAM

ILLUSTRATION 7 : BLADE & STRIKER PLATE GROUPING



PARTS LISTING - ILLUSTRATION 7: BLADE & STRIKER PLATE GROUPING			
ITEM #	PART #	DESCRIPTION	QTY.
1	28302	CENTER PLATE, MAIN FRAME	1
2	62022	BEARING, BALL 1" 2-HOLE FLANGE	1
3	10321	SCREW, CAP 1/2-20 X 1-1/4	2
4	10045	WASHER, LOCK 1/2	5
5	10072	NUT 1/2-20	5
6	50541	ADAPTER, GREASE FIT. 1/8PT X 1/4-28	3
7	10975	FITTING, GREASE 1/8 NPT X 90D	1
8	28321	MOUNT, FLEX-BOLT SANDWICH 3/8-16 J11729-125	5
9	10811	WASHER, LOCK 3/8	10
10	10404	NUT 3/8-16	10
11	28305	STRIKER PLATE	1
12	28320M	BEARING, BALL 1-1/4" 3-HOLE (MODIFIED)	1
13	10308	SCREW, CAP 1/2-20 X 1-1/2	3
14	40015	ELBOW, STREET 1/8 NPT X 90 (BRASS)	1
15	10006	FITTING, GREASE 1/8 NPT X 45D	2
16	28304	CAM SHAFT	1
17	50049	BEARING, BALL 3/4" 2-HOLE FLANGE	1
18	10309	SCREW, CAP 3/8-24 X 1-1/4	2
19	10811	WASHER, LOCK 3/8	2
20	10014	NUT 3/8-24	2
21	10798	PIPE NIPPLE 1/8NPT X 1-1/2 (BLACK)	1
22	10585	PIPE COUPLING 1/8 NPT (BLACK STEEL)	1
23	10914	SCREW, CAP 1/2-13 X 1	4
24	10045	WASHER, LOCK 1/2	4
25	10627	SCREW, SKT. BUTTON HD. 5/16-18 X3/4	5
26	10801	WASHER, LOCK 5/16	5
27	28306	RETAINER, SCRAPER BLADE	1
28	28380 28390	SCRAPER BLADE, 12"RIGID (PK. OF 5) - STANDARD - SHOWN SCRAPER BLADE, 12"SLICER (PK. OF 5) - OPTIONAL - NOT SHOWN	1 PACK

ILLUSTRATION 8 : MOTOR GROUPING



PARTS LISTING - ILLUSTRATION 8: MOTOR GROUPING			
ITEM #	PART #	DESCRIPTION	QTY.
1	16047	MOTOR, BALDOR 1.5HP-1P 60HZ 3450RPM 115/230V 16/8FLA CAT. NO. L3513	1
	40051	<i>REPLACEMENT PARTS:</i> CAPACITOR, START, BALDOR EC1645A06 645-774MFD 125V	1
	16071	MOTOR, BALDOR 2.0HP-1P 50HZ 2850RPM 110/220V 19.4/9.7FLA CAT. NO. L3515-50	1
	16519 16520	<i>REPLACEMENT PARTS:</i> CAPACITOR, START, BALDOR EC1540A06 540-648MFD 125V CAPACITOR, RUN, BALDOR OC3050C09 50MFD 240V	1 1
2	N/A	KEY 3/16"SQ X 1-3/8"L (COMES W/ MOTOR)	1
3	28307	MOUNT, MOTOR	1
4	10806	SCREW, CAP 5/16-18 X 1	4
5	10213	WASHER, FLAT 5/16 SAE	8
6	10801	WASHER, LOCK 5/16	4
7	10054	NUT 5/16-18	4
8	10055	SCREW, CAP 3/8-16 X 1	4
9	10811	WASHER, LOCK 3/8	4
10	10025	WASHER, FLAT 3/8 SAE	4
11	28369	SHEAVE, MOD 3"OD X 6GR.J X 5/8"B	1
12	28372	PULLEY, MOTOR TIMING	1
13	28373	SHEAVE 3.50"OD X 6GR.J X 1"BORE (60 Hz Model)	1
	28401	SHEAVE 3.00"OD X 6GR.J X 1"BORE (50 Hz Model)	1
14	10115	KEY 1/4"SQ X 2	1
15	28397	BELT 240J-6 V RIBBED (60 Hz Model)	1
	28353	BELT 230J-6 V RIBBED (50 Hz Model)	1
16	28308	TENSIONER, BELT	1
17	10312	WASHER, FLAT 1/2 SAE	2
	10040	WASHER, GARRET 17/32 X 1 X .054 (SET UP MAY VARY)	2
18	3659	BEARING, RADIAL BALL 1/2X1-3/8X7/16	2
19	10045	WASHER, LOCK 1/2	1
20	10308	SCREW, CAP 1/2-20 X 1-1/2	1
21	10834	SCREW, CAP 1/4-20 X 1/2	2
22	10451	WASHER, LOCK, INT. TOOTH 1/4"	2
23	10602	WASHER, FLAT 1/4 SAE	2
24	10790	CONDUIT LOCK NUT 1/2 NP	2
25	40066	STRAIN RELIEF 1/2NPT X .350-.450"	2
26	28405	WIRE HARNESS 12/3 X 68"L (SWITCH TO MOTOR)	1
27	86422	CORD W/ PLUG, 25FT. POWER (STRAIGHT STYLE PLUG) NOTE: CORD ONLY ON 50Hz MODEL	1
28	28356	SWITCH, ROCKER	1
	11715	TERM., FEM. PUSH-ON 12-10GA (NOT SHOWN)	4
	10977	TERM., RING #10 12-10GA. INSULATED (NOT SHOWN)	3

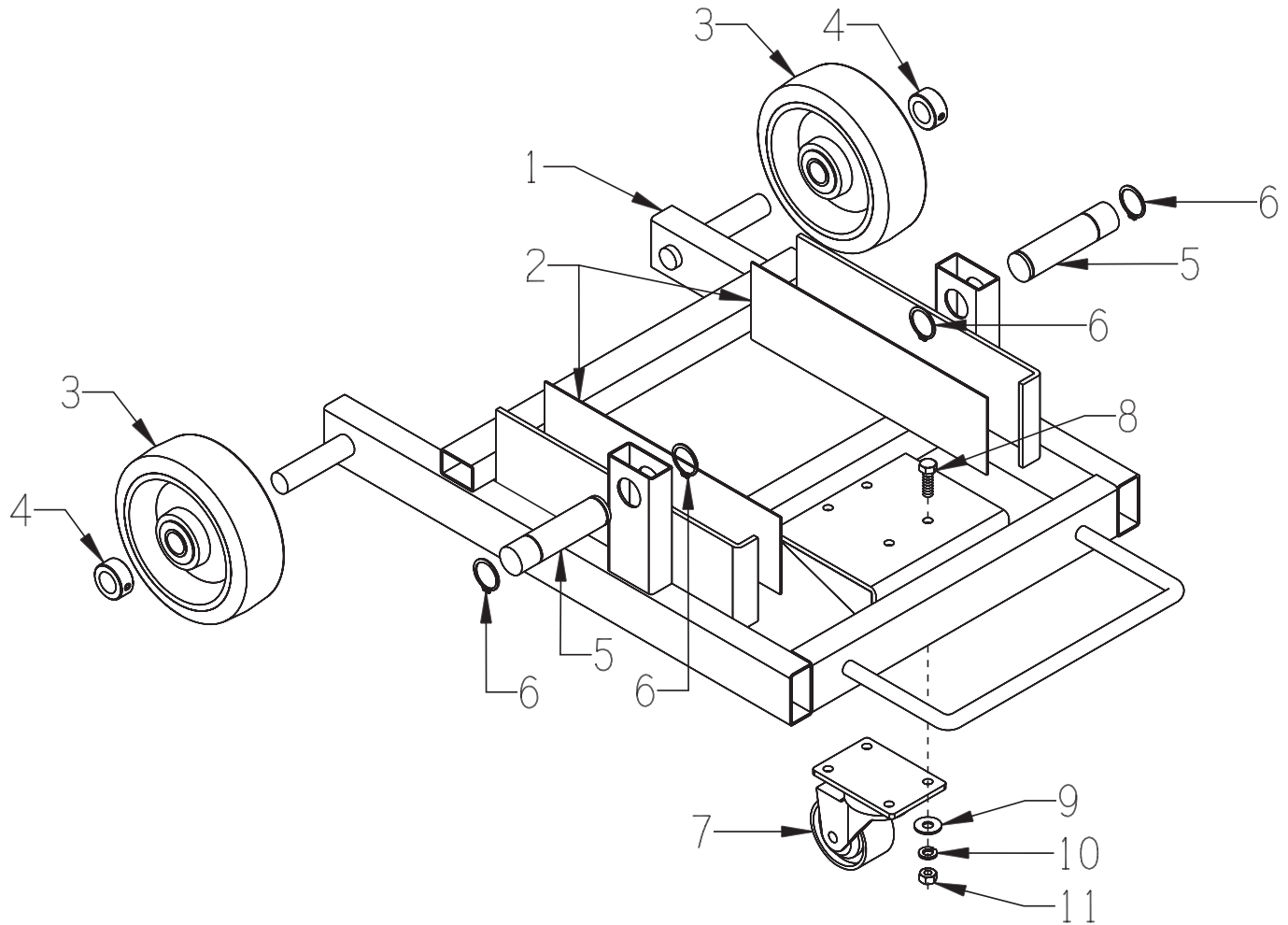


100 Thomas Johnson Drive, Frederick, MD 21702-4600 USA
 Phone (301) 663-1600 • 1-800-638-3326
 Fax (301) 663-1607 • 1-800-447-3326
 Website: www.edcoinc.com
 Email: sales@edcoinc.com

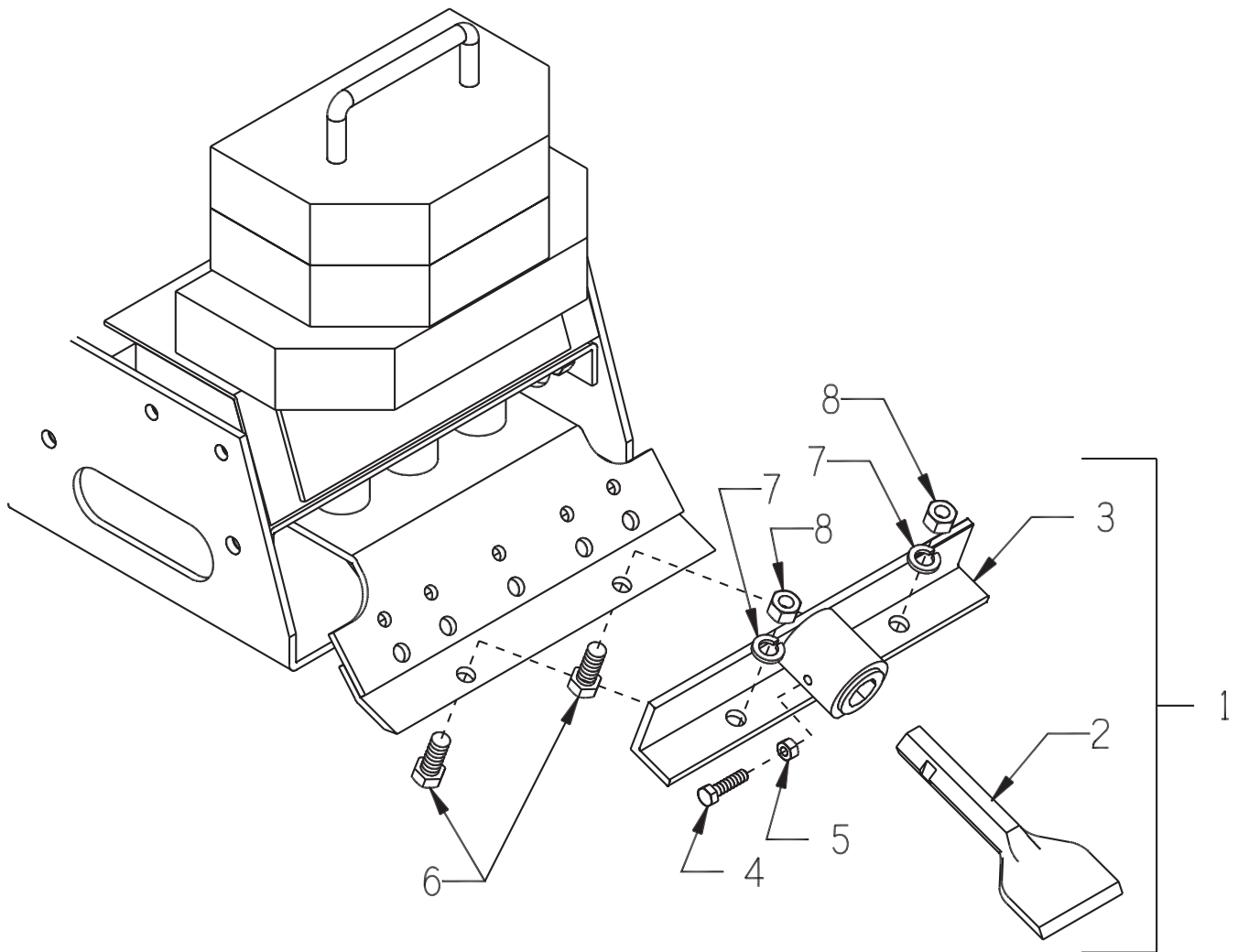
Printed in USA
 ©2009

ILLUSTRATION 9: TRANSPORT DOLLY ASSEMBLY

PART # 94650



ITEM #	PART #	DESCRIPTION	QTY.
1	28370	DOLLY ONLY	1
2	28381	RUBBER STRIP 3 X 10-5/8	2
3	50030	WHEEL 6 X 2 X 3/4"BRG.,ALUM./RUBBER	2
4	10428	COLLAR, LOCKING 3/4"ID	2
5	28371	DOLLY LOCKING BAR	2
6	10906	RETAINING RING, EXT. 1"	4
7	49003	CASTER, SWIVEL 2-1/2 X 1-1/4	1
8	10806	SCREW, CAP 5/16-18 X 1	4
9	10213	WASHER, FLAT 5/16 SAE	4
10	10801	WASHER, LOCK 5/16	4
11	10054	NUT 5/16-18	4

ILLUSTRATION 10: CERAMIC TILE CHISEL KIT**OPTIONAL**

ITEM #	PART #	DESCRIPTION	QTY.
1	28375	CHISEL KIT 3" (INCLUDES ITEMS 2 THRU 8)	1
2	28376	CHISEL 3"	1
3	28377	CHISEL HOLDER	1
4	10606	SCREW, CAP 5/16-18 X 1-1/4	1
5	10054	NUT 5/16-18	1
6	10321	SCREW, CAP 1/2-20 X 1-1/4	2
7	10045	WASHER, LOCK 1/2	2
8	10072	NUT 1/2-20	2

**ILLUSTRATION 11 : WIRING DIAGRAM
FOR 1.5 HP 60Hz MOTOR**

USE CONNECTIONS FOR STANDARD ROTATION (C.C.W.) SHOWN BELOW
HIGH = 230V, LOW = 115V
LINE A = BLACK, LINE B = WHITE

CD0001

	LINE A	LINE B	JOIN
HIGH STD	1	4,5	2,3,8
HIGH OPP	1	4,8	2,3,5
LOW STD	1,3,8	2,4,5	-
LOW OPP	1,3,5	2,4,8	-

NOTES:

- STANDARD ROTATION IS CCW FACING END OPPOSITE SHAFT EXTENSION.
- OPTIONAL THERMOSTAT IS PROVIDED WHEN SPECIFIED.
- MULTIPLE CAPACITORS ARE CONNECTED IN PARALLEL UNLESS OTHERWISE SPECIFIED.
- LEAD COLORS ARE OPTIONAL. LEADS MUST ALWAYS BE NUMBERED AS SHOWN.

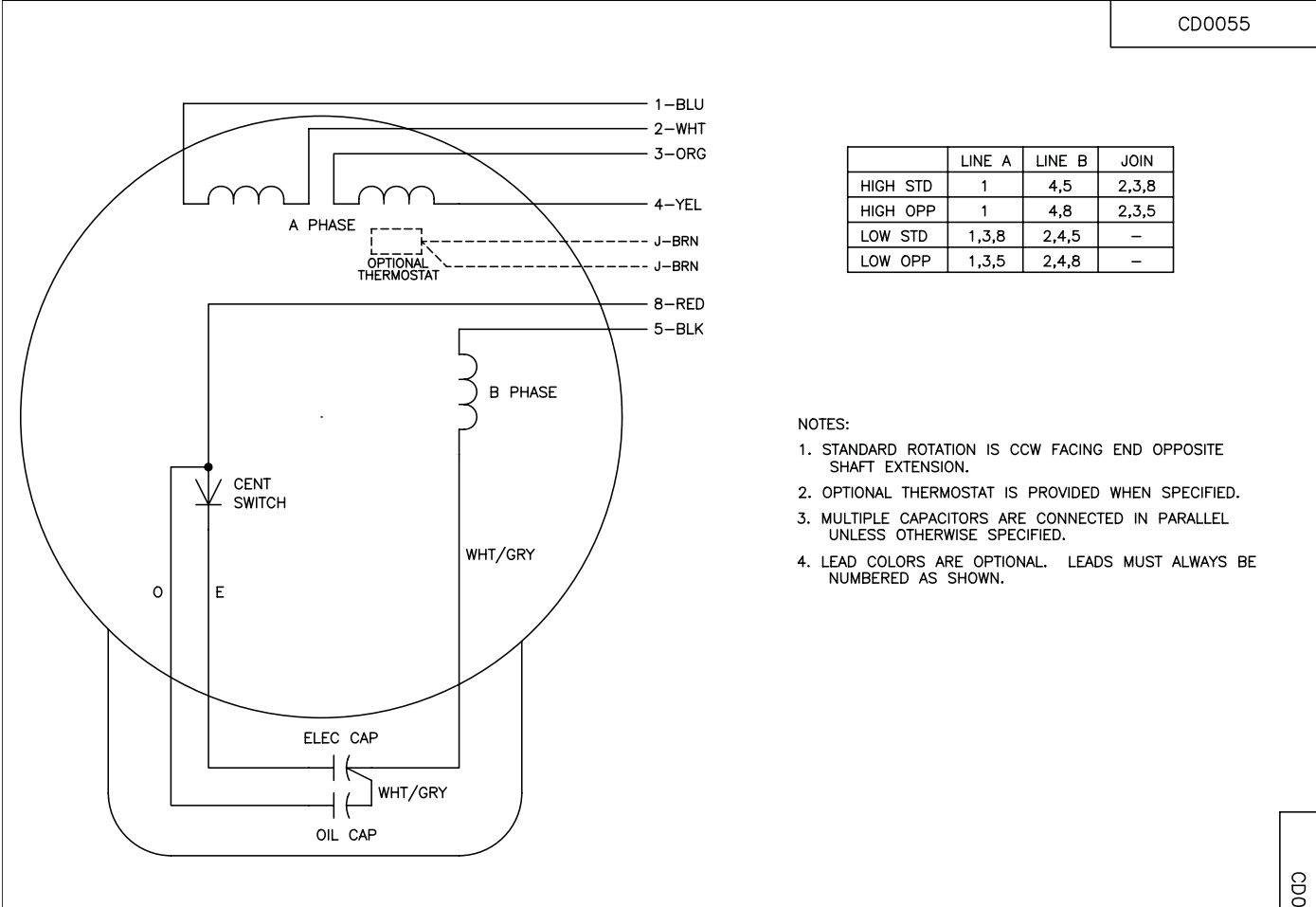
CD0001

REV. DESC: REVISE TO SHOW OPTIONAL COLORS				BALDOR ELECTRIC Co.
REV. LTR: D	BY: JLP	REVISED: 04/08/99 1:16	TDR: 0178636	
100000		FILE: AAA00007405	MDL: -	
		MTL: -		
TYPE L, DV, REV, 6 LEADS				

**ILLUSTRATION 12 : WIRING DIAGRAM
FOR 2.0 HP 50Hz MOTOR**

USE CONNECTIONS FOR STANDARD ROTATION (C.C.W.) SHOWN BELOW
HIGH = 220V, LOW = 110V
LINE A = BLACK, LINE B = WHITE

CD0055



	LINE A	LINE B	JOIN
HIGH STD	1	4,5	2,3,8
HIGH OPP	1	4,8	2,3,5
LOW STD	1,3,8	2,4,5	-
LOW OPP	1,3,5	2,4,8	-

NOTES:

1. STANDARD ROTATION IS CCW FACING END OPPOSITE SHAFT EXTENSION.
2. OPTIONAL THERMOSTAT IS PROVIDED WHEN SPECIFIED.
3. MULTIPLE CAPACITORS ARE CONNECTED IN PARALLEL UNLESS OTHERWISE SPECIFIED.
4. LEAD COLORS ARE OPTIONAL. LEADS MUST ALWAYS BE NUMBERED AS SHOWN.

CD0055

REV. DESC: REVISE TO SHOW OPTIONAL COLORS			
REV. LTR: D	BY: JLP	REVISED: 04/08/99 1:17	TDR: 0178636
950000		FILE: AAA00007414	MDL: -
		MTL: -	

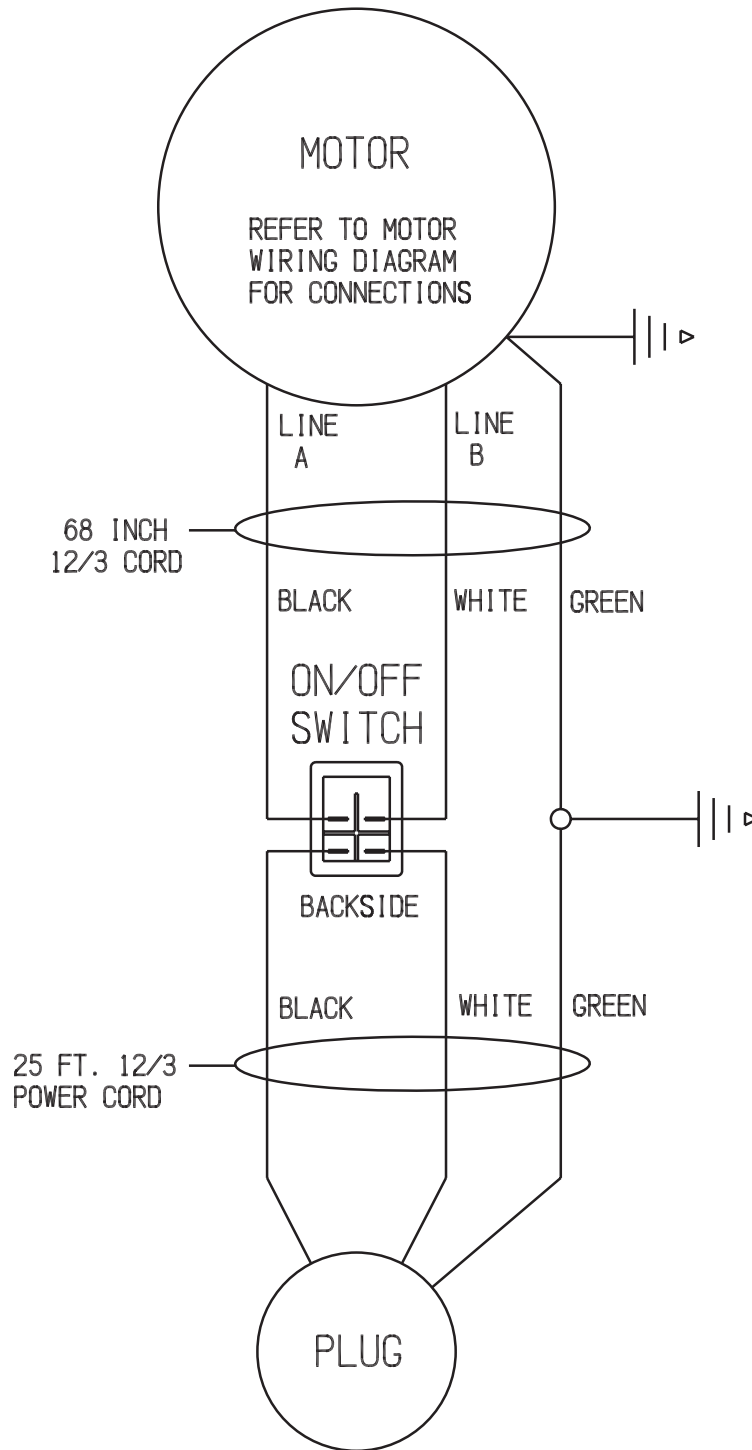
BALDOR ELECTRIC Co.

TYPE LC, DV, REV, 6 LEADS



100 Thomas Johnson Drive, Frederick, MD 21702-4600 USA
 Phone (301) 663-1600 • 1-800-638-3326
 Fax (301) 663-1607 • 1-800-447-3326
 Website: www.edcoinc.com
 Email: sales@edcoinc.com

ILLUSTRATION 13: WIRING DIAGRAM FOR ON/OFF SWITCH



LIMITED EQUIPMENT WARRANTY OF SALE – TERMS & CONDITIONS

Equipment Development Company, Inc. herein referred to as EDCO (Seller) warrants that each new unit manufactured by EDCO to be free from defects in material and workmanship in normal use and service for a period of (1) one year (except for the cutter drum assembly on all model concrete/asphalt planes, in which case the warranty period shall be 90 days) from date of shipment to the original retail or equipment rental center owner.

Accessories or equipment furnished and installed on the product by EDCO but manufactured by others, including, but not limited to engines, motors, electrical components, transmissions etc., shall carry the accessory manufacturers own warranty.

EDCO will, at its option, repair or replace, at the EDCO factory or at a point designated by EDCO, any part which shall appear to the satisfaction of EDCO inspection to have been defective in material or workmanship.

EDCO reserves the right to modify, alter and improve any part or parts without incurring any obligation to replace any part or parts previously sold without such modified, altered or improved part or parts.

This warranty is in lieu of and excludes all other warranties, expressed, implied, statutory, or otherwise created under applicable law including, but not limited to the warranty of merchantability and the warranty of fitness for a particular purpose in no event shall seller or the manufacturer of the product be liable for special, incidental, or consequential damages, including loss of profits, whether or not caused by or resulting from the negligence of seller and/or the manufacturer of the product unless specifically provided herein. In addition, this warranty shall not apply to any products or portions thereof which have been subjected to abuse, misuse, improper installation, maintenance, or operation, electrical failure or abnormal conditions and to products which have been tampered with, altered, modified, repaired, reworked by anyone not approved by seller or used in any manner inconsistent with the provisions of the above or any instructions or specifications provided with or for the product

FORCE MAJEURE

Seller's obligation hereunder are subject to, and Seller shall not be held responsible for, any delay or failure to make delivery of all or any part of the Product due to labor difficulties, fires, casualties, accidents, acts of the elements, acts of God, transportation difficulties, delays by a common carrier, inability to obtain Product, materials or components or qualified labor sufficient to timely perform part of or all of the obligations contained in these terms and conditions, governmental regulations or actions, strikes, damage to or destruction in whole or part of manufacturing plant, riots, terrorist attacks or incidents, civil commotions, warlike conditions, flood, tidal waves, typhoon, hurricane, earthquake, lightning, explosion or any other causes, contingencies or circumstances within or without the United States not subject to the Seller's control which prevent or hinder the manufacture or delivery of the Products or make the fulfillment of these terms and conditions impracticable. In the event of the occurrence of any of the foregoing, at the option of Seller, Seller shall be excused from the performance under these Terms and Conditions, or the performance of the Seller shall be correspondingly extended.

This document sets forth the terms and conditions pursuant to which the purchaser ("Purchaser") will purchase and Equipment Development Co. Inc. ("Seller") will sell the products, accessories, attachments (collectively the Products) ordered by the Purchaser. These terms and conditions shall govern and apply to the sale of Seller's Products to Purchaser, regardless of any terms and conditions appearing on any purchase order or other forms submitted by Purchaser to Seller, or the inconsistency of any terms therein and herein.

1. PRICE

All prices set forth on any purchase order or other document are F.O.B. Seller's facility or distribution point, as may be determined by Seller (F.O.B. Point). All prices are exclusive of any and all taxes, including, but not limited to, excise, sales, use, property or transportation taxes related to the sale or use of the Products, now or hereafter imposed, together with all penalties and expenses. Purchaser shall be responsible for collecting and/or paying any and all such taxes, whether or not they are stated in any invoice for the Products. Unless otherwise specified herein, all prices are exclusive of inland transportation, freight, insurance and other costs and expenses relating to the shipment of the Products from the F.O.B. point to Purchaser's facility. Any prepayment by Seller of freight insurance and other costs shall be for the account of Purchaser and shall be repaid to Seller.

2. PAYMENT TERMS

Payment terms are as follows. 2% 10 days (to approved and qualified accounts). Net 30 days. This is a cash discount for invoices paid within 10 days after the invoice date, regardless of date of receipt of shipment. This is not a trade discount and will not be granted to accounts that do not adhere to stated terms.

*All past due accounts are subject to a late payment fee of 1.5% per month or a maximum allowed by law if different, along with the expenses incidental to collection including reasonable attorney's fees and costs.

*Seller reserves the right to hold shipments against past due accounts.

*Seller reserves the right to alter payment terms.

3. FREIGHT TERMS

All shipments will be made F.O.B. shipping point as designated in these Terms and Conditions, and title shall pass at the F.O.B. point. Delivery to the initial common carrier shall constitute delivery to the Purchaser. Any claims for loss or damage during shipment are to be filed with carrier by the Purchaser. Seller will not assume responsibility for the performance of the carrier.

Back orders will be shipped in the most practical fashion with charges consistent with our freight policy established with the original order. UPS, FED EX, MAIL or shipments by other couriers are subject to the same terms and conditions as outlined in paragraph #3 "Freight Terms".

4. DELIVERY, DAMAGES, SHORTAGES

Seller shall use reasonable efforts to attempt to cause the Products to be delivered as provided for in these Terms & Conditions. Delivery to the initial common carrier shall constitute the delivery to the Purchaser. Seller's responsibility, in so far as transportation risks are concerned ceases upon the delivery of the Products in good condition to such carrier at the F.O.B. point and all the Products shall be shipped at the Purchaser's risk. Seller shall not be responsible or liable for any loss of income and/or profits, or incidental, special, consequential damages resulting from Seller's delayed performance in shipment and delivery.

5. RETURN OF DEFECTIVE PRODUCTS

Defective or failed material shall be held at the Purchaser's premises until authorization has been granted by Seller to return or dispose of Products. Products that are to be returned for final inspection must be returned Freight Prepaid in the most economical way. Credit will be issued for material found to be defective upon Seller's inspection based on prices at time of purchase.

6. PRODUCTS ORDERED IN ERROR

Products may be returned, provided that claim is made and Seller is notified within 7 days of receipt of Products, and the Products are in original buyer's possession not more than 30 days prior to return, subject to Seller's approval. If Products are accepted for return, they must be Freight Prepaid and buyer will be charged a minimum of 15% restocking charge, plus a charge back for outbound freight charges if the original order was shipped prepaid. Returns are not accepted for any Products that are specifically manufactured to meet the buyer's requirement of either specifications or quantity.

AGREEMENTS

These Terms and Conditions constitute the entire agreement between Seller and Purchaser as it relates to terms and conditions of sale, and supersedes any and all prior oral or written agreements, correspondence, quotations or understandings heretofore in force between the parties relating to the subject matter hereof. There are no agreements between Seller and Purchaser with respect to the Product herein except those specifically set forth in and made part of these terms and conditions. Any additional terms, conditions and/or prices are rejected by Seller.

These terms and conditions may be modified, cancelled or rescinded only by a written agreement of both parties executed by their duly authorized agents.

USE ONLY GENUINE EDCO PARTS & ACCESSORIES
For your own safety, the safety of others and the life of your machine.

Equipment Development Company, Inc.