

MODEL CPM-10

SAFETY COVER KIT

PART #65253K

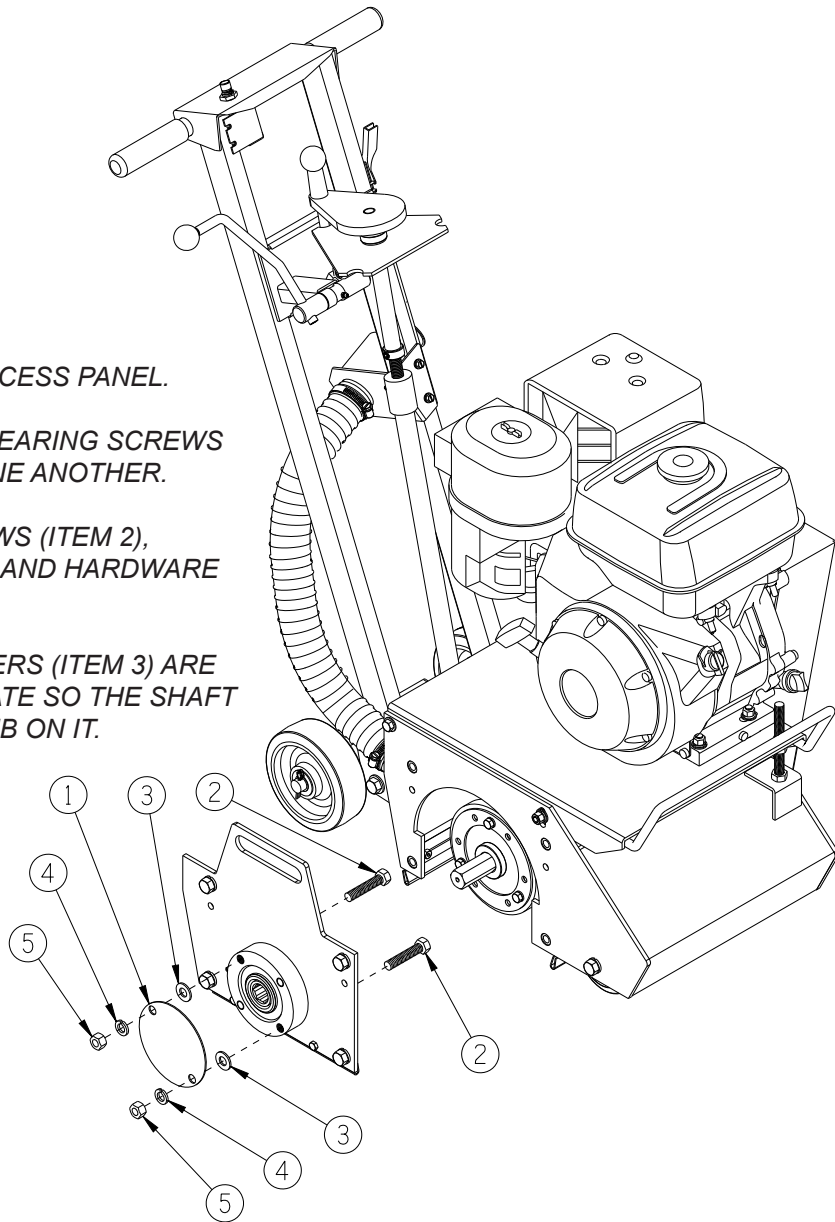
E-CPM10-SCK-0116

REMOVE DRUM SIDE ACCESS PANEL.

REMOVE TWO OF THE BEARING SCREWS THAT ARE 180° FROM ONE ANOTHER.

INSTALL LONGER SCREWS (ITEM 2), BEARING COVER PLATE AND HARDWARE AS SHOWN.

MAKE SURE FLATWASHERS (ITEM 3) ARE BEHIND THE COVER PLATE SO THE SHAFT AND BEARING DON'T RUB ON IT.



ITEM #	PART #	DESCRIPTION	QTY.
1	65253	COVER PLATE, BEARING, CPM-10	1
2	11868	BOLT, TAP 1/2-20 X 2-1/2 FULL THD.	2
3	10312	WASHER, FLAT 1/2 SAE ZINC	2
4	10045	WASHER, LOCK 1/2 ZINC	2
5	10072	NUT, HEX 1/2-20 ZINC	2



EQUIPMENT DEVELOPMENT COMPANY, INC.

100 Thomas Johnson Drive, Frederick, MD 21702-4600 USA
 Phone: 800-638-3326 or 301-663-1600 • Fax: 800-447-3326 or 301-663-1607
 Website: www.edcoinc.com • E-mail: sales@edcoinc.com

Printed in USA

JWA ©2016