

REVISED STARTING
SERIAL # 090610027

PARTS LIST MANUAL

MODEL TG10



10" TURBO GRINDERS

SKU #	MODEL #	POWER OPTION
56600	TG10-11H	HONDA GASOLINE ENGINE MODEL GXV340UT2-DX3
56700	TG10-11P	HONDA PROPANE ENGINE MODEL GXV340T2-DP23
56900	TG10-5L/230/1	LEESON ELECTRIC MOTOR 5HP 1PH 60Hz 230V
56800-230	TG10-5B/230/3	BALDOR ELECTRIC MOTOR 5HP 3PH 60Hz 230V
56800-460	TG10-5B/460/3	BALDOR ELECTRIC MOTOR 5HP 3PH 60Hz 460V
56800-50/220	TG10-5B/50/220/3	BALDOR ELECTRIC MOTOR 5HP 3PH 50Hz 220V
56800-50/380	TG10-5B/50/380/3	BALDOR ELECTRIC MOTOR 5HP 3PH 50Hz 380V
56800-50/440	TG10-5B/50/440/3	BALDOR ELECTRIC MOTOR 5HP 3PH 50Hz 440V



A Division of Equipment Development Company, Inc.

100 Thomas Johnson Drive, Frederick, MD 21702-4600 USA

Phone (301) 663-1600 • 1-800-638-3326

Fax (301) 663-1607 • 1-800-447-3326

Website: www.edcoinc.com

Email: sales@edcoinc.com

Printed in USA

©2009

READ AND UNDERSTAND THE OPERATORS INSTRUCTION MANUAL THOROUGHLY BEFORE ATTEMPTING TO OPERATE THIS EQUIPMENT. Death or serious injury could occur if this machine is used improperly.



SAFETY MESSAGES



The safety instructions are preceded by a graphic alert message of DANGER, WARNING, or CAUTION.



Indicates an imminent hazard which, if not avoided, will result in death or serious injury.



Indicates an imminent hazard which, if not avoided, can result in death or serious injury.



Indicates hazards which, if not avoided, could result in serious injury and or damage to the equipment.

GASOLINE Powered Equipment



- Do not operate gasoline powered equipment without adequate ventilation. Carbon monoxide is an invisible, odorless gas that can kill.

ELECTRICAL Powered Equipment



- ELECTRICAL HAZARD** - Be sure equipment is properly grounded. Failure to comply could kill or result in serious injury.



The engine exhaust from this product contains chemicals known to the State of California to cause cancer, birth defects or other reproductive harm.

GENERAL INSTRUCTIONS



- You must read and understand the operators instruction manual and all other manuals associated with this machine. For your safety and the safety of others around you, it is extremely important to fully understand how to operate this machine in the way it was intended. Different model machines or older/newer versions of the same model may have different parts and controls that you need to understand. If instructions are not readable or available DO NOT USE this machine and contact the factory for a replacement Manual.
- You must be able to physically handle the bulk weight and power of this machine. If not properly controlled this machine can cause death or serious injury.
- Do not operate this machine in an impaired mental state. You must be able to exercise good judgement and reactions to maintain a safe working environment.
- This is a "one person" machine which means only one operator can be operating the machine at any one time. For the safety of others, maintain a safe operating distance to other personnel. Your work area should be defined and appropriately marked so bystanders and coworkers do not stand or walk near this machine and end up seriously injured by flying debris or exposing them to harmful noise or dust.
- This equipment is for Commercial use. Although this is a "one person" machine your work team should understand how to shut this machine off and quickly get medical help if an accident strikes the operator.
- Keep all guards in place during operation. The guards are to provide protection from inadvertent contact with dangerous moving parts, pinch points, or hot surfaces.
- Wear appropriate Personal Protective Equipment (PPE) including safety glasses, safety boots, work gloves, respiratory protection, hearing protection, and head protection. Do not wear loose clothing that can get tangled in moving parts. Failure to do so could result

in dismemberment or death. **Wear an approved respirator when removing hazardous materials or when grinding/cutting dry materials. Some dust particles such as concrete dust can contain silicate particles which can cause silicosis (a very serious lung disease). Contact NIOSH or OSHA for further details. When wet grinding/cutting, avoid contact with the concrete/asphalt slurry which can cause serious skin irritations.**

- You must maintain this machine per the maintenance schedule in the operator manual. Remember before adjusting, servicing, or fueling this machine, disconnect the source of power to the machine by disconnecting the spark plug (Gas models), or by unplugging the electrical power cord (electric models) or air hose (Pneumatic models) AT THE MACHINE so you can assure yourself it remains unplugged while you are working on it. Do not modify this machine. Use only genuine EDCO parts and accessories. Repairs and service should be performed by approved EDCO dealers or authorized technicians.
- You should look carefully around the area before you begin work so you can identify potential hazards such as deck inserts, pipes, columns, openings, electrical cords or outlets, or any other objects protruding from the slab surface.
- This machine has no brain so you must use your own. There is no substitute for safety. The safety decals on the machine are to serve as a reminder for information you must already know before you begin using this machine. Take a moment to reread the safety decals each time you use the machine. If your machine is missing any decals, contact the factory for a replacement (EDCO 1-800-638-3326).

PARTS LIST MANUAL

MODEL TG10

10" TURBO GRINDERS

TABLE OF CONTENTS

<u>Section</u>	<u>Page Number</u>
Safety Messages and General Instructions	2
How To Order Replacement Parts	3
Illustration 1: Main Grouping	4,5
Illustration 2: Water Valve Grouping	6
Illustration 3: Bearing Hub & Head Assembly	7
Illustration 4: Rigid Head Assembly (Standard)	8
Illustration 5: Flex Head Assembly (Optional)	9
Illustration 6: Engine & Belt Drive Grouping	10, 11
Illustration 7: Propane Grouping	12, 13
Illustration 8: Motor & Belt Drive Grouping	14, 15
Illustration 9: Optional Ball Caster Depth Stop Kit	16
Lovato Starter Box Wiring Diagram	17
Motor Wiring Diagram 1-Phase 60 Hz 230V (Leeson)	18
Motor Wiring Diagram 3-Phase 60 Hz 230/460V (Baldor)	19
Motor Wiring Diagram 3-Phase 50 Hz 220/380/440V (Baldor)	19
Limited Equipment Warranty of Sale - Terms & Conditions	20 (Back Page)

HOW TO ORDER REPLACEMENT PARTS

- ☐ To insure product safety and reliability, always use genuine EDCO replacement parts when making repairs to the equipment.
- ☐ When calling for parts, specify the MODEL and SERIAL number of the machine, which can be found on the NAME PLATE. Keep that information in the space provided. In addition to this information, give part number, description, and quantity as listed on the parts list to your parts representative.
- ☐ Please note: Due to improvements and changes in the equipment, the illustrations shown may be different than the actual machine.

FILL IN INFORMATION BELOW

Date of Purchase _____

Model # _____

Serial # _____

SKU # _____



A Division of Equipment Development Company, Inc.

100 Thomas Johnson Drive, Frederick, MD 21702-4600 USA

Phone (301) 663-1600 • 1-800-638-3326

Fax (301) 663-1607 • 1-800-447-3326

Website: www.edcoinc.com

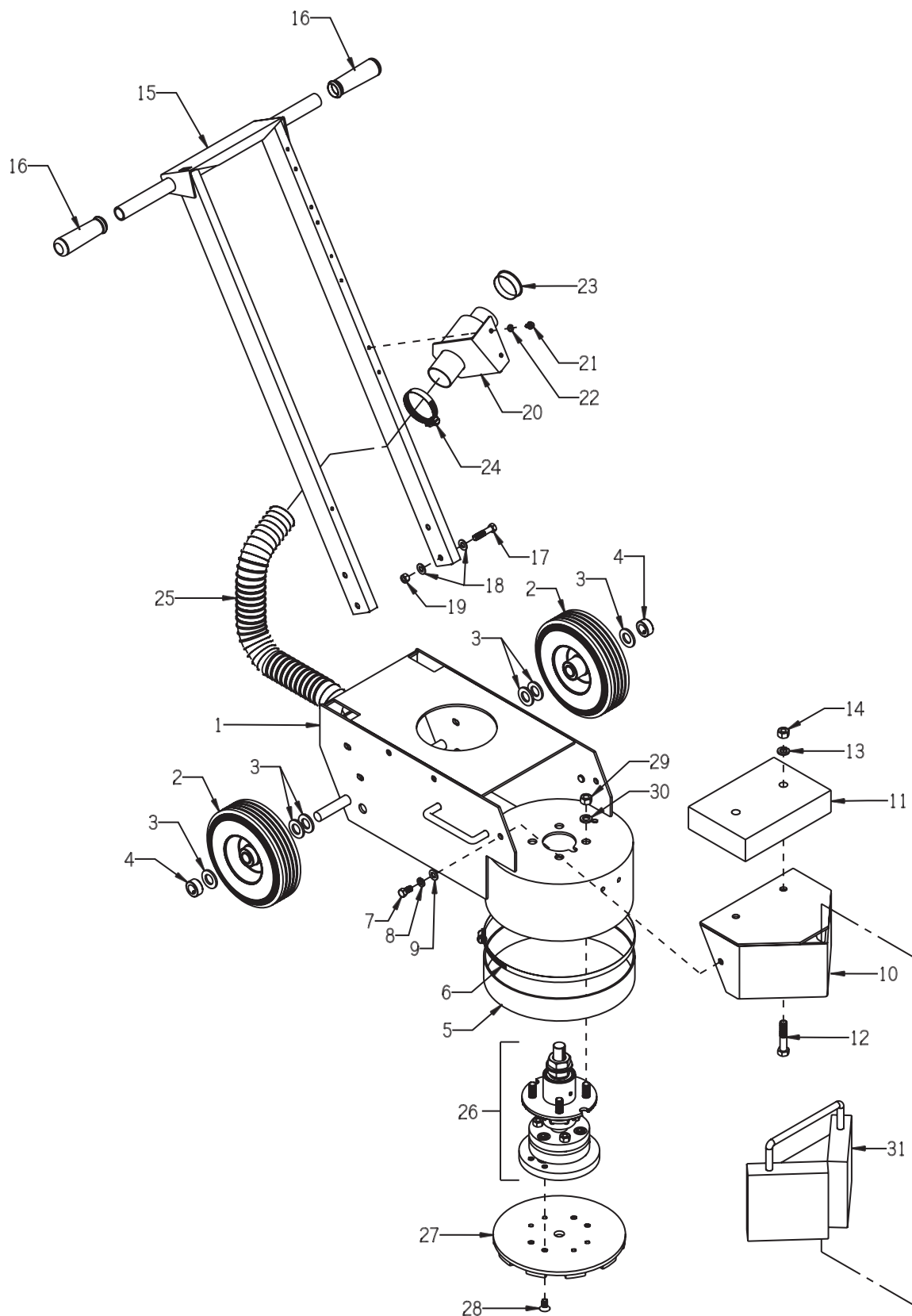
Email: sales@edcoinc.com

Printed in USA

©2009

Page 3

ILLUSTRATION 1: MAIN GROUPING



PARTS LISTING - ILLUSTRATION 1 : MAIN GROUPING			
ITEM #	PART #	DESCRIPTION	QTY.
1	86336	MAIN FRAME	1
2	79013SH	WHEEL, STEEL HUB 8 X 2-1/2 X 3/4"BRG.	2
3	10009	WASHER, FLAT 3/4 SAE	6
4	10428	COLLAR, LOCKING 3/4"ID	2
5	86337	RUBBER SKIRT, 2"H X 35-1/8"L	1
6	86338	CLAMP, HOSE, SAE #188, 12-1/4"	1
7	10907	SCREW, CAP 3/8-16 X 3/4	2
8	10811	WASHER, LOCK 3/8	2
9	10025	WASHER, FLAT 3/8 SAE	2
10	86303	HOOD	1
11	86345	WEIGHT BLOCK, 30 LB. 9 X 6 X 2 (ELECTRIC MODELS ONLY)	1
12	10499	SCREW, CAP 1/2-13 X 3	2
13	10045	WASHER, LOCK 1/2	2
14	10417	NUT 1/2-13	2
15	86304	HANDLE BAR	1
16	10608	GRIP, HAND 1" MODEL AT	2
17	10029	SCREW, CAP 3/8-24 X 1-3/4	4
18	10025	WASHER, FLAT 3/8 SAE	8
19	10004	NUT, LOCK 3/8-24	4
20	86347	BRACKET, MULTI-VAC PORT 2-3"	1
21	10846	SCREW, CAP STSHW 1/4-20 X 1/2	2
22	10038	WASHER, LOCK 1/4	2
23	65021	CAP/PLUG 2" RED PLASTIC, FLANGED	1
24	10745	CLAMP, HOSE, SAE #32, ADJ. TO 2-1/2	2
25	77113	HOSE, FLEX 2"ID X 32"L	1
26	86333... 86326...	*HEAD ASSEMBLY COMPLETE W/ BEARING HUBRIGID STYLEFLEXIBLE STYLE *NOTE: REFER TO ILLUS. 3, 4, AND 5 FOR BREAKDOWNS	1
27	19166... 19167...	**DIAMOND DISC, ECONOMY (GENERAL PURPOSE) MEDIUM BOND, 7 MATRIX, 30-40 GRITSILVER 10" - 20 SEG. (INCLUDED W/ MACHINE)SILVER 10" - 10 SEG. (OPTIONAL) **NOTE: REFER TO ACCESSORY PRICE LIST OR CATALOG FOR OTHER DIAMOND DISC AVAILBLE.	1
28	86108	SCREW, FLAT HD SKT 3/8-24 X 3/4	4
29	10072	NUT 1/2-20	4
30	10045	WASHER, LOCK 1/2	4
31	86340	OPTIONAL 30 LB. WEIGHT	1



A Division of Equipment Development Company, Inc.

100 Thomas Johnson Drive, Frederick, MD 21702-4600 USA

Phone (301) 663-1600 • 1-800-638-3326

Fax (301) 663-1607 • 1-800-447-3326

Website: www.edcoinc.com

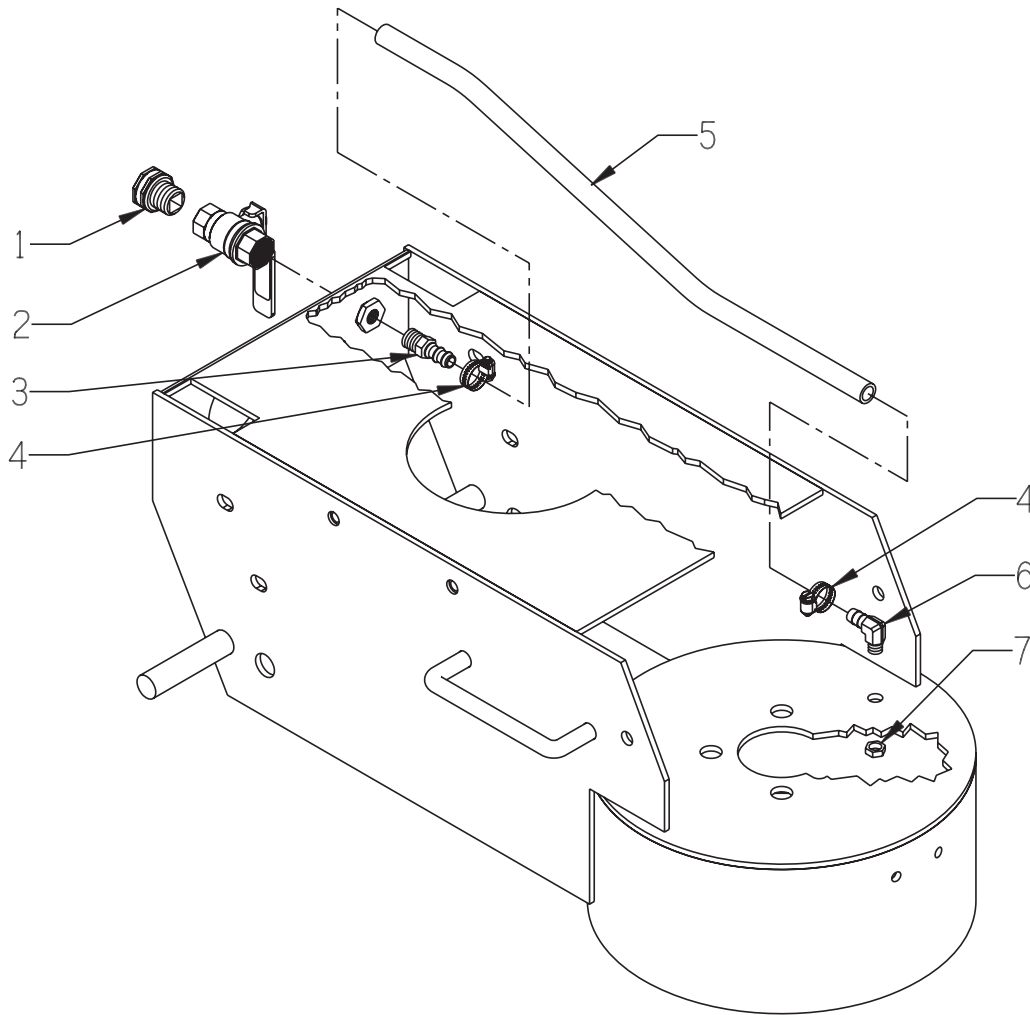
Email: sales@edcoinc.com

Printed in USA

©2009

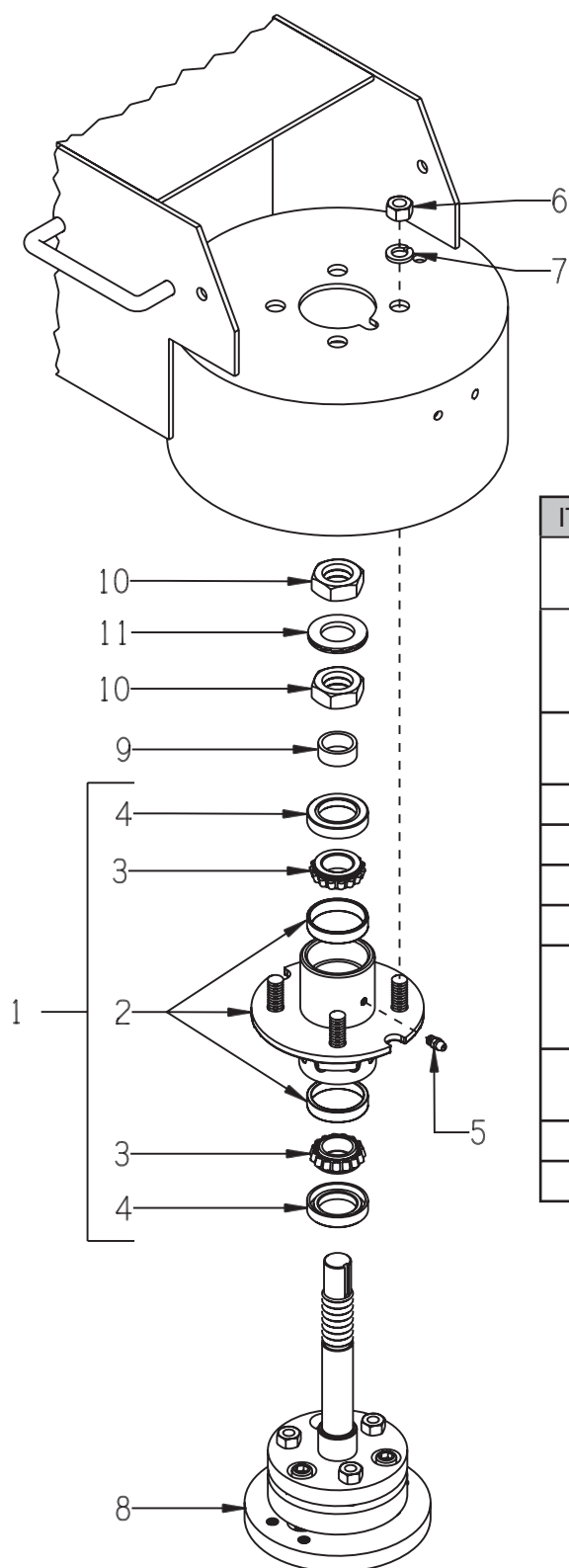
Page 5

ILLUSTRATION 2 : WATER VALVE GROUPING



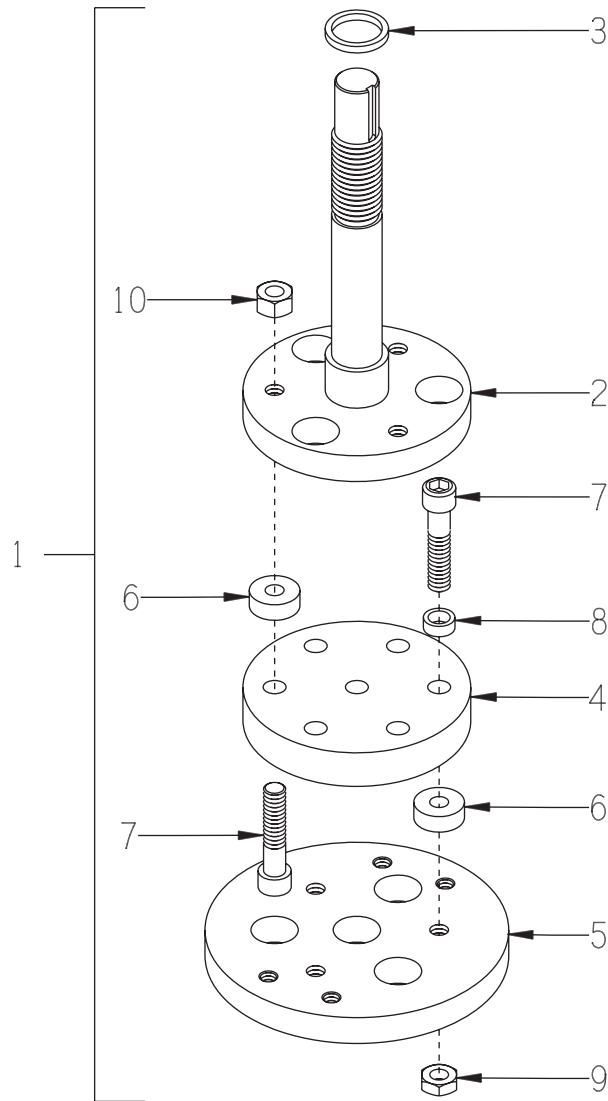
ITEM #	PART #	DESCRIPTION	QTY.
1	80021	CONN., SWIVEL FEM. 3/4HOSE X 1/2MPT (INCLUDES HOSE WASHER)	1
2	10711	VALVE, BALL 1/2 FPT	1
3	50075	BARB, 3/8 HOSE X 1/4MPT (BRASS)	1
4	50069	CLAMP, HOSE, SAE #6, ADJ. TO 13/16	2
5	86329	HOSE 3/8"ID X 19-1/4"L	1
6	11562	BARB ELBOW 90, 3/8HOSE X 1/8MPT (BRASS)	1
7	10864	NUT 1/8-27 PIPE THREAD (BRASS)	1

ILLUSTRATION 3 : BEARING HUB & HEAD ASSEMBLY



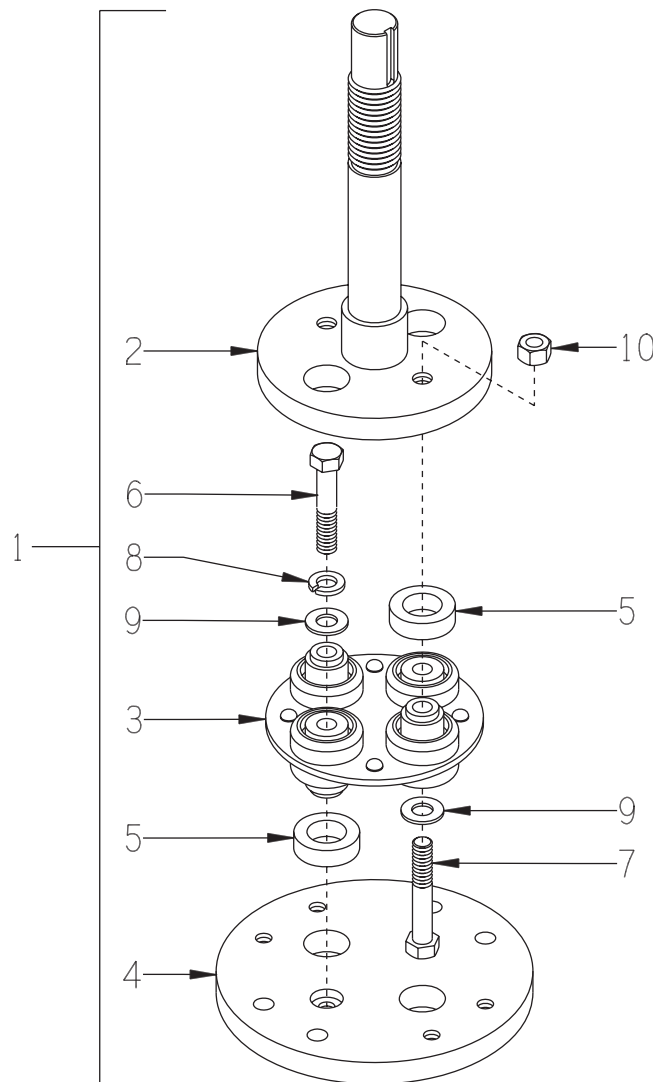
ITEM #	PART #	DESCRIPTION	QTY.
1	86320A	HUB ASSY. W/ BEARINGS & SEALS (INCLUDES ITEMS 2 THRU 5)	1
2	86320HG 86339	HUB W/ RACE CUPS & GREASE HOLE BEARING RACE CUP L44610 NOTE: RACE CUPS ARE PRESSED IN	1 2
3	86321	BEARING, TAPERED ROLLER 1"ID CONE ONLY	2
4	86322	SEAL, BEARING HUB, 1.25 X 1.986	2
5	10808	FITTING, GREASE 1/4-28 STRAIGHT	1
6	10072	NUT 1/2-20	4
7	10045	WASHER, LOCK 1/2	4
8	86333LB... 86326LB...	HEAD ASSY. LESS BEARINGRIGID STYLE (SEE ILLUS. 4)FLEX STYLE (SEE ILLUS. 5)	1
9	86319	SPACER, HUB BEARING 1-1/4"OD x 1"ID x 1/2"L	1
10	50019	NUT, JAM 1-14	2
11	86323	WASHER, NORD-LOCK 1" (PAIR)	1

ILLUSTRATION 4 : RIGID HEAD ASSEMBLY (STANDARD)



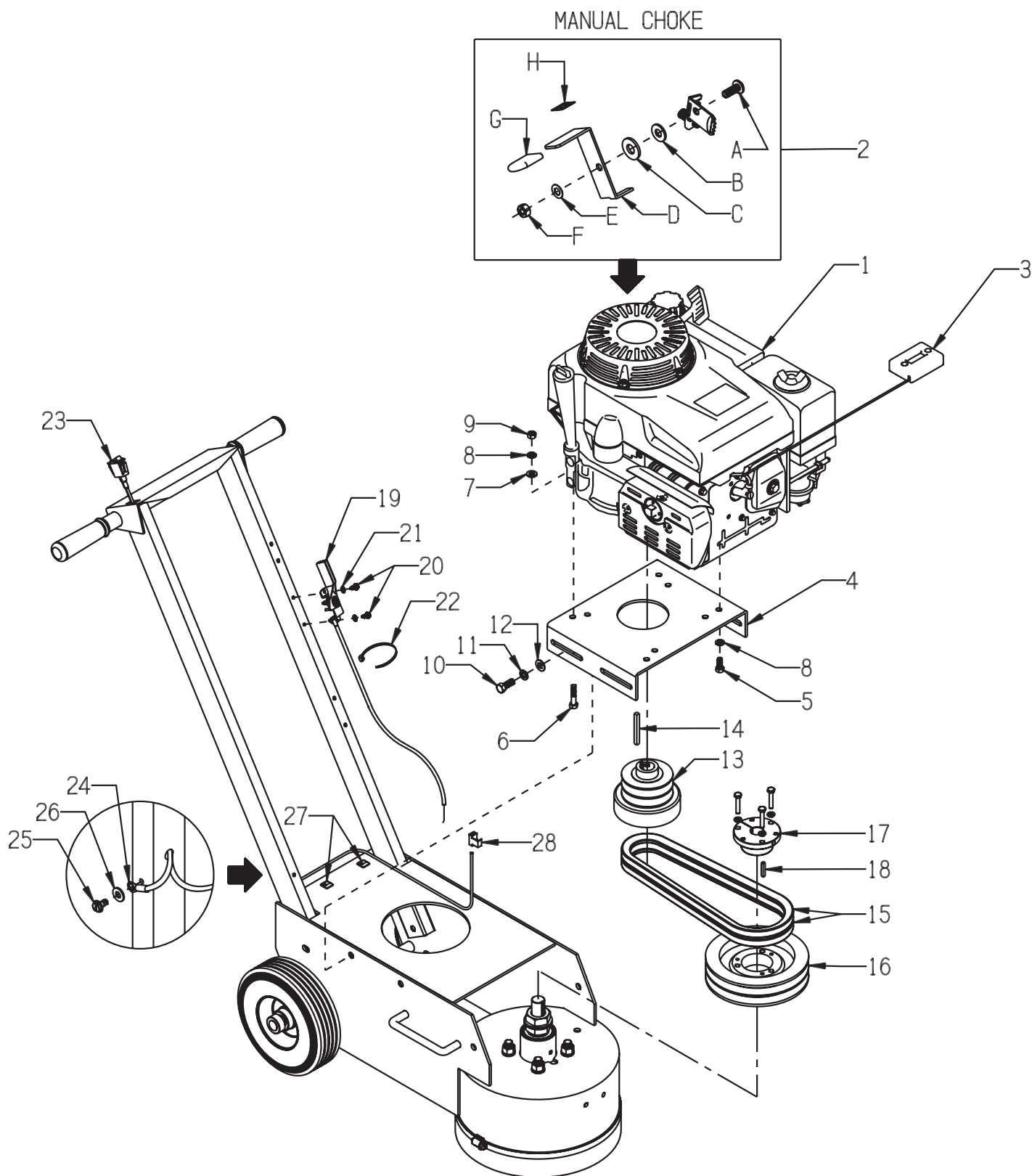
ITEM #	PART #	DESCRIPTION	QTY.
1	86333LB	HEAD ASSY. LESS BRG., RIGID (INCLUDES ITEMS 2-10)	1
2	86334	FLANGE W/ SHAFT, RIGID HEAD	1
3	68017	SPACER 1-1/4"OD X 1"ID X 5/32"THK.	1
4	86132S	SPACER, RIGID HEAD, STEEL	1
5	86133	MOUNTING DISC, RIGID HEAD	1
6	40329	BUSHING, RUBBER 1"OD X 3/8"ID X 3/8	6
7	86111	SCREW, SKT. HD. CAP 7/16-20 X 2 (Grade 8)	6
8	86112	SPACER, STL 5/8"OD X 7/16ID X 1/4TK	3
9	11641	NUT, JAM 7/16-20 (USE RED LOCTITE)	3
10	10481	NUT 7/16-20 (USE RED LOCTITE)	3

ILLUSTRATION 5 : FLEX HEAD ASSEMBLY (OPTIONAL)



ITEM #	PART #	DESCRIPTION	QTY.
1	86326LB	HEAD ASSY. LESS BRG., RIGID (INCLUDES ITEMS 2-10)	1
2	86308	FLANGE W/ SHAFT, FLEX HEAD	1
3	86017	COUPLING, MORFLEX 402.	1
4	86309	MOUNTING DISC, FLEXIBLE HEAD	1
5	86343	BUSHING, RUBBER 1-1/4 X 3/4 X 3/8	4
6	10030	SCREW, CAP 3/8-24 X 2 (USE RED LOCTITE)	2
7	10336	SCREW, CAP 3/8-24 X 2-1/4	2
8	10811	WASHER, LOCK 3/8	2
9	10025	WASHER, FLAT 3/8 SAE	2
10	10004	NUT, LOCK 3/8-24	3

ILLUSTRATION 6: ENGINE & BELT DRIVE GROUPING



PARTS LISTING - ILLUSTRATION 6 : ENGINE & BELT DRIVE GROUPING			
ITEM #	PART #	DESCRIPTION	QTY.
1	76004 15012	ENGINE, HONDA GASOLINE MODEL GXV340UT2-DX3 (SHOWN) PROPANE MODEL GXV340T2-DP23 (REFER TO ILLUS. 7)	1
2	15190	MANUAL CHOKE KIT FOR HONDA GXV340 (GASOLINE MODEL ONLY)	1
2-A	15185	SCREW, MACHINE M6 X 16MM PHILLIP HD	1
2-B	15188	WASHER .265"ID, .50"OD, .029-.035"THK	1
2-C	15187	WASHER, FIBER .75 X .25 X .093	1
2-D	15183	LEVER, CHOKE CONTROL, GXV340	1
2-E	15186	WASHER, BELLEVILLE .500 X.255 X.018	1
2-F	28026	NUT, HEX NYLON LOCK M6 X 1MM	1
2-G	15184	CAP, FLAT RED .062 X .75 X 1	1
2-H	91301	DECAL, CHOKE 5/8 X 5/8	1
3	15138	METER, HOUR, REDINGTON INDUCTIVE (OPTIONAL)	1
4	86311	MOUNT, ENGINE/MOTOR	1
5	10048	SCREW, CAP 5/16-24 X 3/4	2
6	10342	SCREW, CAP 5/16-18 X 1-1/2	2
7	10213	WASHER, FLAT 5/16 SAE	2
8	10801	WASHER, LOCK 5/16	4
9	10054	NUT 5/16-18	2
10	10055	SCREW, CAP 3/8-16 X 1	4
11	10811	WASHER, LOCK 3/8	4
12	10025	WASHER, FLAT 3/8 SAE	4
13	76024	CLUTCH, CENTRIFUGAL 3.5 X 2GR X 1	1
14	10071	KEY 1/4SQ X 2-1/2	1
15	10290	BELT B-35	2
16	75010	SHEAVE 6.9"OD X 2GR.B X SDS	1
17	10081M	BUSHING, SHEAVE SDS X 7/8 MODIFIED COUNTER BORED 1-3/4"DIA. X 3/8"DEEP	1
18	50523	KEY 3/16SQ X 1-1/8	1
19	40388	CABLE, THROTTLE, LEVER-TYPE 24"	1
20	10877	SCREW, CAP STSHW 10-24 X 1/2	2
21	10831	WASHER, LOCK, INT. TOOTH #10	2
22	10982	TIE, CABLE, BLACK NYLON 11-1/4"	1
23	15201A	SWITCH W/ WIRES, ROCKER RED ON-OFF	1
24	50084	TERM., RING #10 16-14GA. INSULATED	1
25	10831	WASHER, LOCK, INT. TOOTH #10	1
26	10877	SCREW, CAP STSHW 10-24 X 1/2	1
27	36042	CLIP, NATURAL CORD, 1/8" X 1/4"	3
28	10970	CONN., WIRE QUICK-SPLICE 18-14 GA.	1



A Division of Equipment Development Company, Inc.

100 Thomas Johnson Drive, Frederick, MD 21702-4600 USA

Phone (301) 663-1600 • 1-800-638-3326

Fax (301) 663-1607 • 1-800-447-3326

Website: www.edcoinc.com

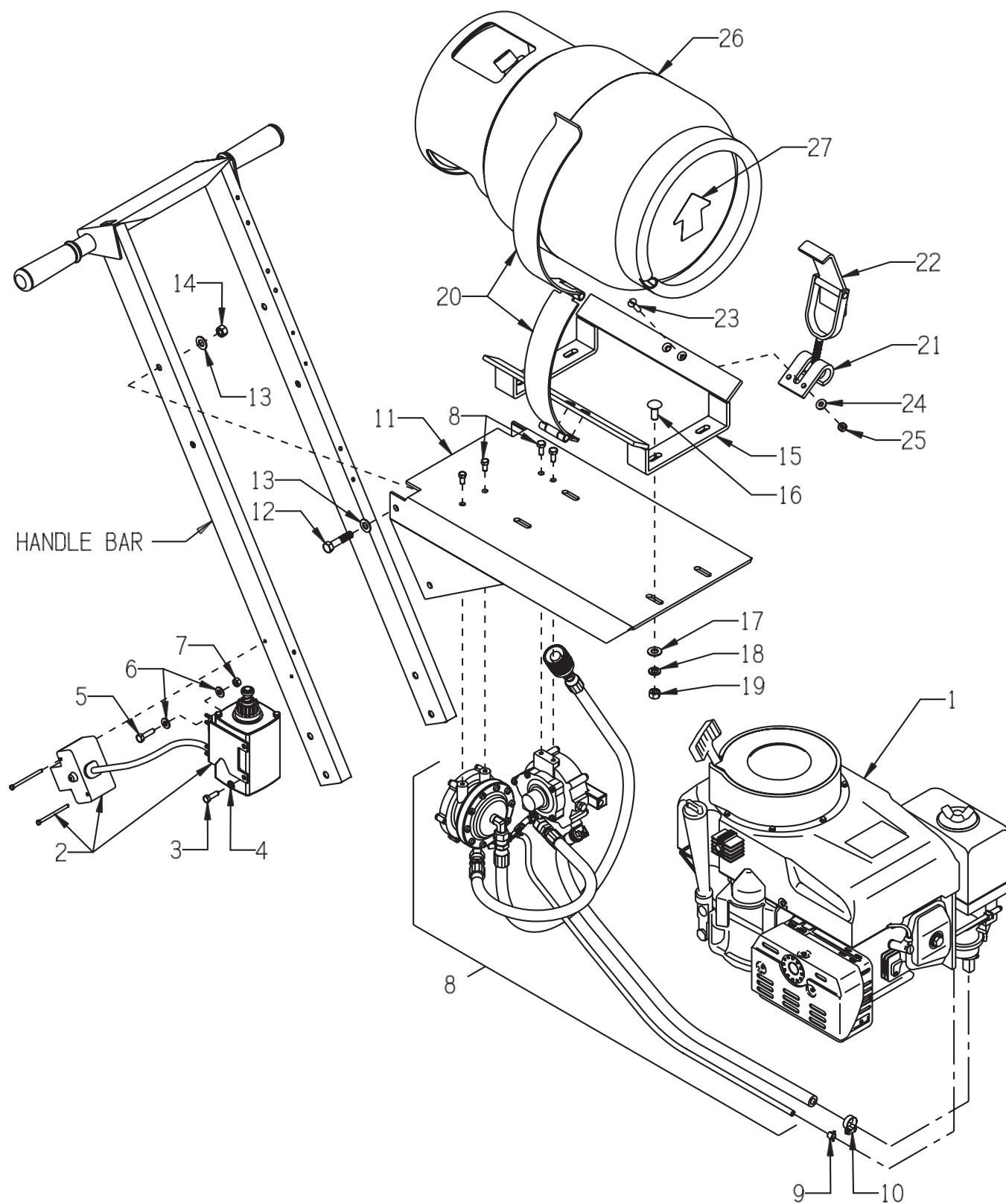
Email: sales@edcoinc.com

Printed in USA

©2009

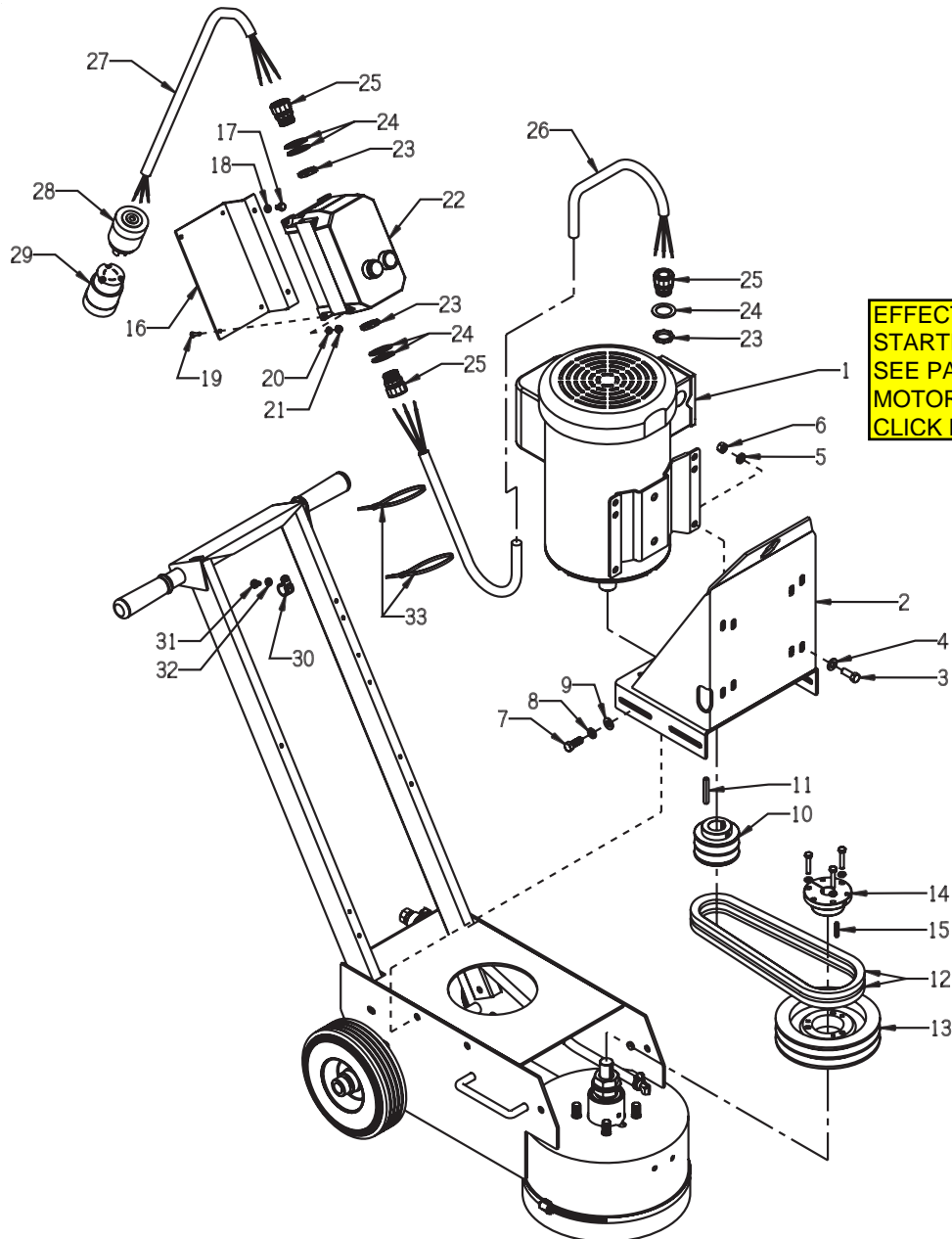
Page 11

ILLUSTRATION 7 : PROPANE GROUPING



PARTS LISTING - ILLUSTRATION 7 : PROPANE GROUPING			
ITEM #	PART #	DESCRIPTION	QTY.
1	15012	ENGINE, HONDA PROPANE GXV340T2-DP23	1
2	15126	STARTER KIT, ELECTRIC 120 VOLT AC (INCLUDES POWER CORD - NOT SHOWN)	1
3	11634	SCREW, CAP M6 X 1.0P X 20MM	2
4	10038	WASHER, LOCK 1/4	2
5	10031	SCREW, CAP 1/4-20 X 1	2
6	10602	WASHER, FLAT 1/4 SAE (USE 2 FOR SHIMS WHEN REQ'D.)	4
7	10013	NUT 1/4-20	2
8	15102	VAPOR KIT FOR HONDA GXV340T2-DP23 KIT INCLUDES: HIGH PRESSURE VAPOR REGULATOR G-SE-50 2A-C (1 EA.) FUELOCK VAPOR FILTER G-SE-VFF30-2-4 (1 EA.) HIGH PRESSURE HOSE W/ FITTINGS 11-1/2" (1 EA.) HIGH PRESSURE HOSE W/ FITTINGS 38-1/2" (1 EA.) HOSE, PUSH LOCK 3/8"ID X 32"L (1 EA.) HOSE, VACUUM 3/16"ID X 48"L (1 EA.) REGO 7141F FEMALE COUPLING, BRASS (1 EA.) FITTING 1/4NPT X 3/8FLARE 90DEG, BRASS (3 EA.) FITTING 3/8" PIPE X 3/8" HOSE BARB ELBOW, BRASS . . . (1 EA.) FITTING 1/8NPT X 3/16" HOSE, ELBOW, BRASS (1 EA.) FITTING 1/8NPT X 3/16" HOSE BARB, BRASS (1 EA.) FITTING 3/16" TEE, NYLON (1 EA.)	1
9	11720	CLAMP, HOSE SPRING-TYPE 1/8" BLACK 02-041	6
10	50069	CLAMP, HOSE, SAE #6, ADJ. TO 13/16	2
11	86327	MOUNT, PROPANE TANK	1
12	10029	SCREW, CAP 3/8-24 X 1-3/4	4
13	10025	WASHER, FLAT 3/8 SAE	8
14	10004	NUT, LOCK 3/8-24	4
15	77061-1	PROPANE TANK CRADLE BRACKET ONLY	1
16	10802	BOLT, CARRIAGE 3/8-16 X 1 FULL THD.	4
17	10025	WASHER, FLAT 3/8 SAE	4
18	10811	WASHER, LOCK 3/8	4
19	10404	NUT 3/8-16	4
20	77061-2	PROPANE TANK STRAP W/ HINGE	1
21	77061-3	PROPANE TANK CLAW BRACKET	1
22	77061-4	PROPANE TANK TOGGLE CLAMP	1
23	11661	SCREW, FLAT HD SLT 1/4-20 X 1	2
24	10602	WASHER, FLAT 1/4 SAE	2
25	10861	NUT, KEPS 1/4-20	2
26	15130	PROPANE TANK 20LB. HORZ.	1
27	91122	DECAL, ARROW, RED, 3 X 3	1

ILLUSTRATION 8: MOTOR & BELT DRIVE GROUPING



PARTS LISTING - ILLUSTRATION 8 : MOTOR & BELT DRIVE GROUPING

ITEM #	PART #	DESCRIPTION	QTY.
1	16069	MOTOR, LEESON 5HP-1P-60HZ-3500RPM-230V (SHOWN) CAT. NO. 131549.00 <u>REPLACEMENT PARTS:</u>	1
	16521.....CAPACITOR, START, LEESON 003049.04 (390MFD 250V)	1
	16522.....CAPACITOR, RUN, LEESON 003050.05 (45MFD 370V)	1
	16020	MOTOR, BALDOR 5HP-3PH-50HZ-2850RPM-220/380/440V CAT. NO. M3613T-50	1
2	86404	MOUNT, MOTOR	1

PARTS LISTING CONTINUED - ILLUSTRATION 8 : MOTOR & BELT DRIVE GROUPING			
ITEM #	PART #	DESCRIPTION	QTY.
3	10021	SCREW, CAP 3/8-24 X 1	4
4	10025	WASHER, FLAT 3/8 SAE	4
5	10811	WASHER, LOCK 3/8	4
6	10014	NUT 3/8-24	4
7	10055	SCREW, CAP 3/8-16 X 1	4
8	10811	WASHER, LOCK 3/8	4
9	10025	WASHER, FLAT 3/8 SAE	4
10	79023	SHEAVE 3"OD X 2GR.B X 1-1/8"BORE	1
11	-----	KEY 1/4SQ X 1-3/4 (COMES WITH MOTOR)	1
12	10290	BELT B-35 (60Hz MOTOR)	2
	10035	5L-330 (50Hz MOTOR)	2
13	75010	SHEAVE 6.9"OD X 2GR.B X SDS (60Hz MOTOR)	1
	86344	4.55"OD X 2GR.B X 7/8"BORE (50Hz MOTOR)	1
14	10081M	BUSHING, SHEAVE SDS X 7/8 MODIFIED (60Hz MOTOR ONLY) COUNTER BORED 1-3/4"DIA. X 3/8"DEEP	1
15	50523	KEY 3/16SQ X 1-1/8	1
16	86027	MOUNTING BRKT., LOVATO M1 STARTER	1
17	10846	SCREW, CAP STSHW 1/4-20 X 1/2	2
18	10038	WASHER, LOCK 1/4	2
19	10362	SCREW, MACHINE 8-32 X 3/4	4
20	12112	WASHER, RIVET #9 5/32 X 7/16 X 3/64	4
21	10462	NUT, KEPS 8-32	4
22	16410	STARTER, LOVATO M1 1PH-60Hz-230V-19.8FLA (11-M1-BRF-P30-26-23060)	1
	16460	3PH-60Hz-230V-12FLA (11-M1-BRF-P23-15-23060)	
	16406	3PH-60Hz-460V-6FLA & 3PH-50Hz-440V-6.5FLA (11-M1-BRF-P14-10-46060)	
	16405	3PH-50Hz-220V-13FLA (11-M1-BRF-P23-23-23060)	
	16482	3PH-50Hz-380V-7.6FLA (11-M1-BRF-P14-10-38050)	
23	10740	CONDUIT LOCK NUT 3/4 NP	3
24	77081	WASHER, FLAT 1-1/2 X 1-1/16 X .06 ALUM.	5
25	10605	STRAIN RELIEF 3/4NPT X .650-.750"	3
26	86331	WIRE HARNESS, STARTER/MOTOR 10/3 X 36"LOA (1-PHASE UNITS)	1
	86332	12/4 X 36"LOA (3-PHASE UNITS)	
27	86026	WIRE HARNESS, STARTER/PLUG 10/3 X 24"LOA (1-PHASE UNITS)	1
	86022	12/4 X 24"LOA (3-PHASE UNITS)	
28	40037	PLUG, LOCKING 20A/250V L6-20P (1-PHASE 60Hz UNIT ONLY)	1
29	40000	CONNECTOR, LOCKING 20A/250V L6-20C (1-PHASE 60Hz UNIT ONLY)	1
30	11565	CLAMP, LOOM, 5/8" (SAE SIZE 10)	1
31	10831	WASHER, LOCK, INT. TOOTH #10	1
32	10877	SCREW, CAP STSHW 10-24 X 1/2	1
33	10982	TIE, CABLE, BLACK NYLON 11-1/4"	2



A Division of Equipment Development Company, Inc.

100 Thomas Johnson Drive, Frederick, MD 21702-4600 USA

Phone (301) 663-1600 • 1-800-638-3326

Fax (301) 663-1607 • 1-800-447-3326

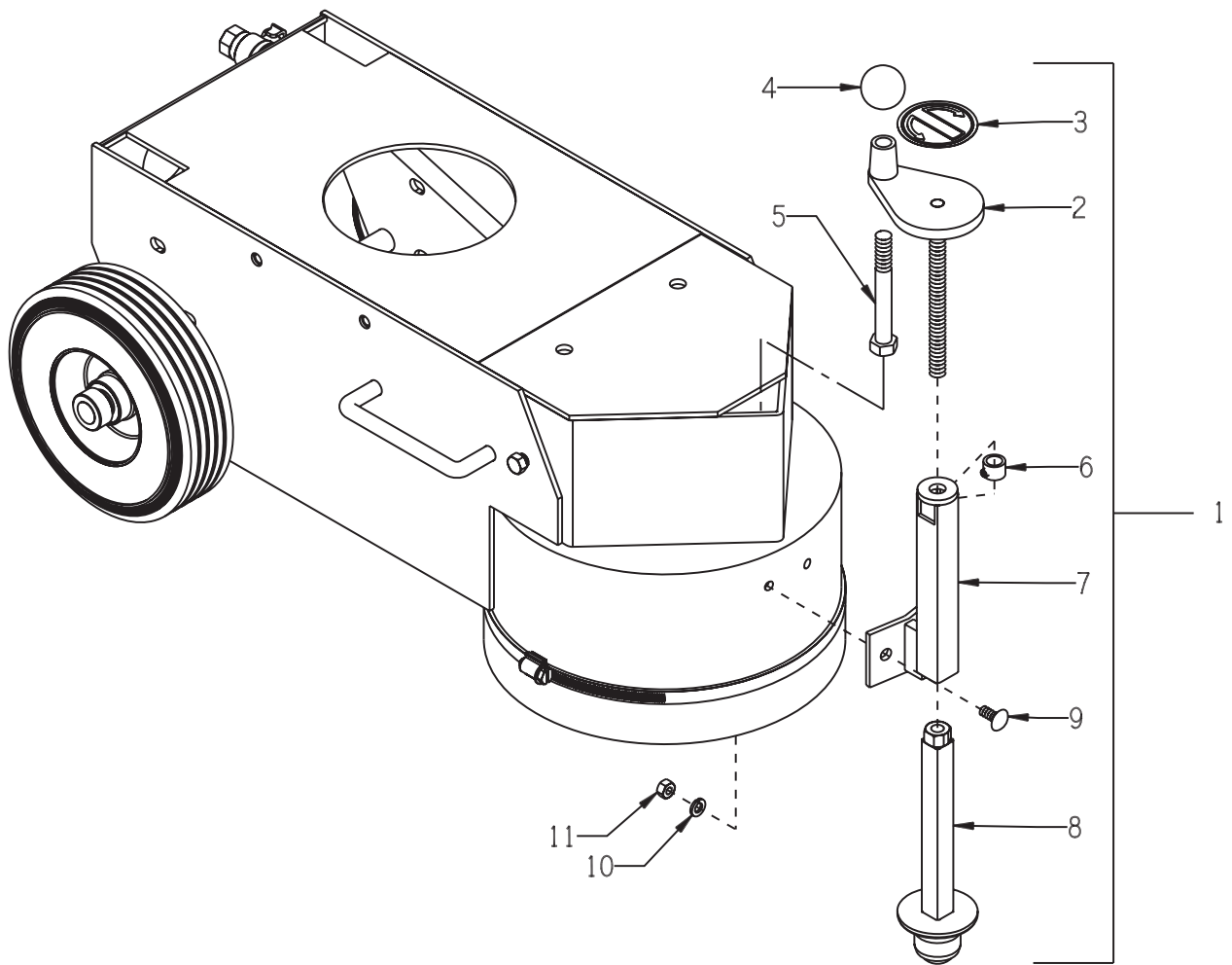
Website: www.edcoinc.com

Email: sales@edcoinc.com

Printed in USA

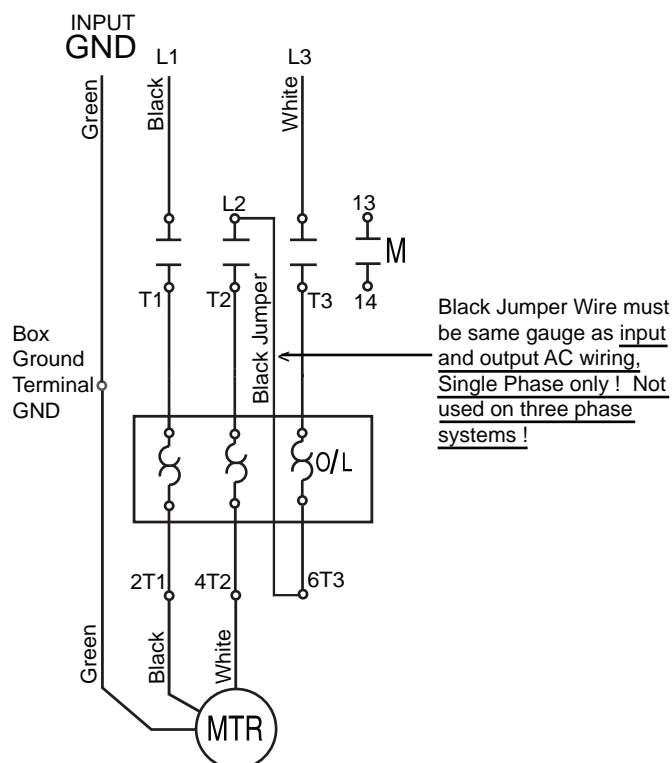
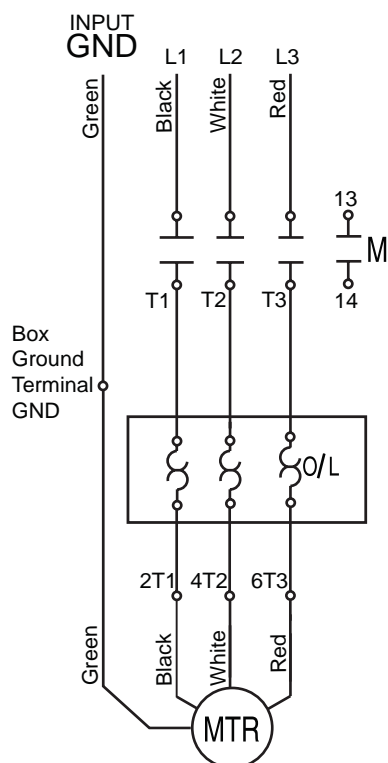
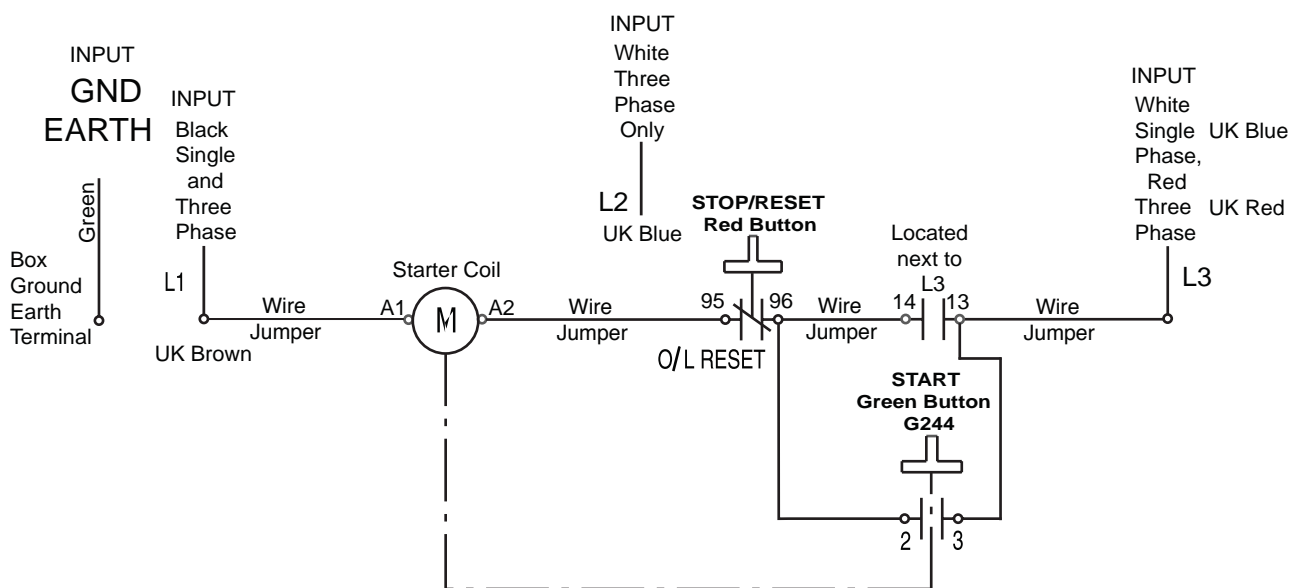
©2009

Page 15

ILLUSTRATION 9: OPTIONAL BALL CASTER DEPTH STOP KIT


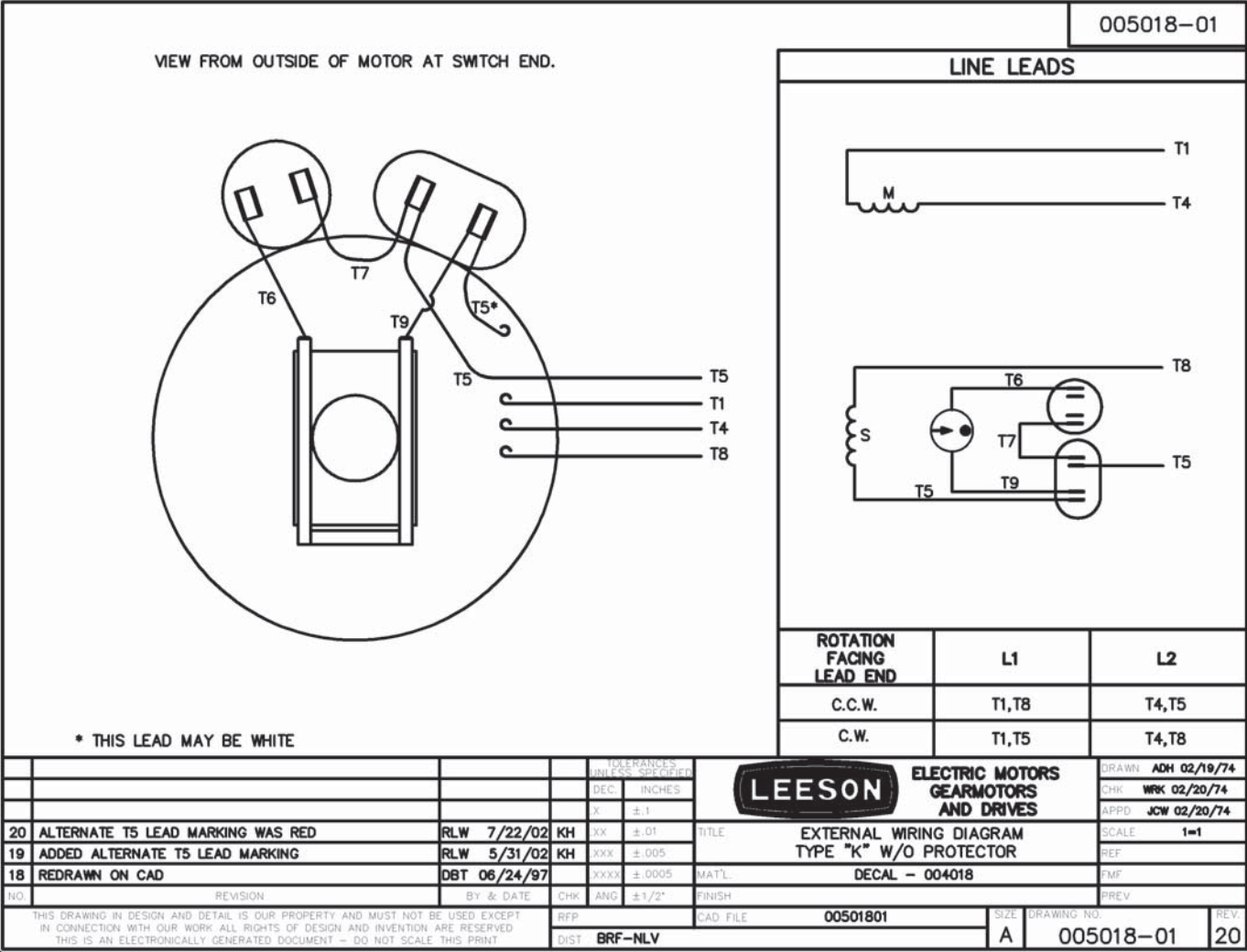
ITEM #	PART #	DESCRIPTION	QTY.
1	86330	BALL CASTER DEPTH STOP KIT (ITEMS 2 THRU 11)	1
2	86313	HANDWHEEL, SMALL W/ ROD 1/2-13 X 6-1/2	1
3	80007	DECAL, DEPTH STOP - DN/UP 2.5"	1
4	10104	KNOB, BALL 1-7/8 W/ 1/2-13THD, BLK.	1
5	81001	SCREW, CAP 1/2-13 X 4	1
6	86316	COLLAR, LOCKING 1/2", MODIFIED 11/16"OD	1
7	86314	SUPPORT, DEPTH STOP	1
8	86315	BALL-CASTER WELDMENT	1
9	10818	BOLT, CARRIAGE 5/16-18 X 3/4 F.T.	2
10	10801	WASHER, LOCK 5/16	2
11	10054	NUT 5/16-18	2

LOVATO STARTER BOX WIRING DIAGRAM



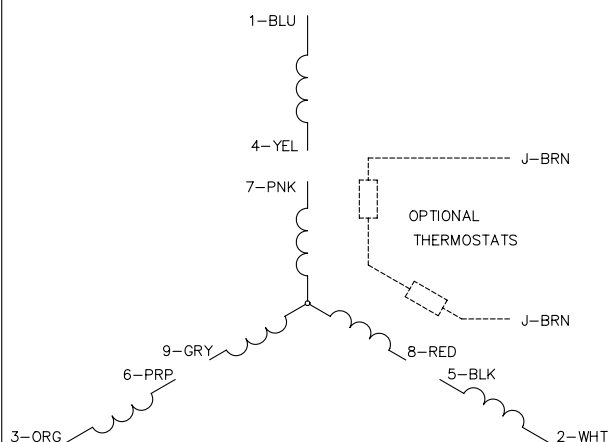
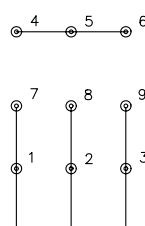
MOTOR WIRING DIAGRAM 1-PHASE 60 Hz 230V

USE CONNECTIONS FOR C.W. (CLOCK-WISE) ROTATION SHOWN BELOW
L1 = BLACK, L2 = WHITE

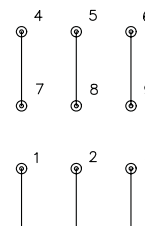


MOTOR WIRING DIAGRAM 3-PHASE 60 Hz 230/460V

CD0005

LOW VOLTAGE
(2Y)

LINE

HIGH VOLTAGE
(1Y)

LINE

NOTES:

1. INTERCHANGE ANY TWO LINE LEADS TO REVERSE ROTATION.
2. OPTIONAL THERMOSTATS ARE PROVIDED WHEN SPECIFIED.
3. ACTUAL NUMBER OF INTERNAL PARALLEL CIRCUITS MAY BE A MULTIPLE OF THOSE SHOWN ABOVE.
4. LEAD COLORS ARE OPTIONAL. LEADS MUST ALWAYS BE NUMBERED AS SHOWN.

REV. DESC: REVISE TO SHOW OPTIONAL COLORS

REV. LTR: E

BY: JLP

REVISED: 01/19/99 10:15

TDR: 0171435

500000

FILE: AAA00005140

MDL: -

MTL: -

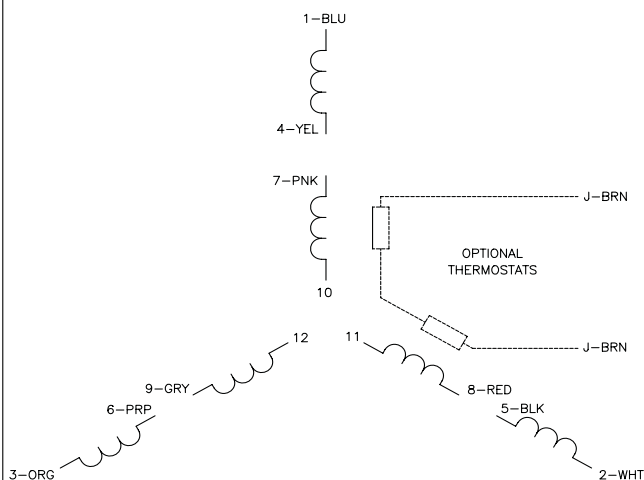
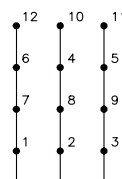
BALDOR ELECTRIC Co.

3PH, DV, 9 LEADS

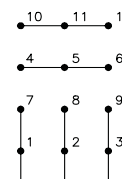
CD0005

MOTOR WIRING DIAGRAM 3-PHASE 50 Hz 220/380/440V

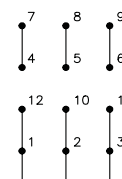
CD0044

LOW VOLTAGE
(2D)

LINE

MED. VOLTAGE
(2Y)

LINE

HIGH VOLTAGE
(1D)

LINE

NOTES:

1. INTERCHANGE ANY TWO LINE LEADS TO REVERSE ROTATION.
2. OPTIONAL THERMOSTATS ARE PROVIDED WHEN SPECIFIED.
3. ACTUAL NUMBER OF INTERNAL PARALLEL CIRCUITS MAY BE A MULTIPLE OF THOSE SHOWN ABOVE.
4. LEAD COLORS ARE OPTIONAL. LEADS MUST ALWAYS BE NUMBERED AS SHOWN.

REV. DESC: REVISE TO SHOW OPTIONAL COLORS

REV. LTR: G

BY: JLP

REVISED: 01/19/99 4:09

TDR: 0171435

440000

FILE: AAA00008373

MDL: -

MTL: -

BALDOR ELECTRIC Co.

3PH, TV, 12 LEADS, 2D/2Y/1D

CD0044



A Division of Equipment Development Company, Inc.

100 Thomas Johnson Drive, Frederick, MD 21702-4600 USA

Phone (301) 663-1600 • 1-800-638-3326

Fax (301) 663-1607 • 1-800-447-3326

Website: www.edcoinc.com

Email: sales@edcoinc.com

Printed in USA

©2009

Page 19

LIMITED EQUIPMENT WARRANTY OF SALE – TERMS & CONDITIONS

Equipment Development Company, Inc. herein referred to as EDCO (Seller) warrants that each new unit manufactured by EDCO to be free from defects in material and workmanship in normal use and service for a period of (1) one year (except for the cutter drum assembly on all model concrete/asphalt planes, in which case the warranty period shall be 90 days) from date of shipment to the original retail or equipment rental center owner.

Accessories or equipment furnished and installed on the product by EDCO but manufactured by others, including, but not limited to engines, motors, electrical components, transmissions etc., shall carry the accessory manufacturers own warranty.

EDCO will, at its option, repair or replace, at the EDCO factory or at a point designated by EDCO, any part which shall appear to the satisfaction of EDCO inspection to have been defective in material or workmanship.

EDCO reserves the right to modify, alter and improve any part or parts without incurring any obligation to replace any part or parts previously sold without such modified, altered or improved part or parts.

This warranty is in lieu of and excludes all other warranties, expressed, implied, statutory, or otherwise created under applicable law including, but not limited to the warranty of merchantability and the warranty of fitness for a particular purpose in no event shall seller or the manufacturer of the product be liable for special, incidental, or consequential damages, including loss of profits, whether or not caused by or resulting from the negligence of seller and/or the manufacturer of the product unless specifically provided herein. In addition, this warranty shall not apply to any products or portions thereof of which have been subjected to abuse, misuse, improper installation, maintenance, or operation, electrical failure or abnormal conditions and to products which have been tampered with, altered, modified, repaired, reworked by anyone not approved by seller or used in any manner inconsistent with the provisions of the above or any instructions or specifications provided with or for the product

FORCE MAJEURE

Seller's obligation hereunder are subject to, and Seller shall not be held responsible for, any delay or failure to make delivery of all or any part of the Product due to labor difficulties, fires, casualties, accidents, acts of the elements, acts of God, transportation difficulties, delays by a common carrier, inability to obtain Product, materials or components or qualified labor sufficient to timely perform part of or all of the obligations contained in these terms and conditions, governmental regulations or actions, strikes, damage to or destruction in whole or part of manufacturing plant, riots, terrorist attacks or incidents, civil commotions, warlike conditions, flood, tidal waves, typhoon, hurricane, earthquake, lightning, explosion or any other causes, contingencies or circumstances within or without the United States not subject to the Seller's control which prevent or hinder the manufacture or delivery of the Products or make the fulfillment of these terms and conditions impracticable. In the event of the occurrence of any of the foregoing, at the option of Seller, Seller shall be excused from the performance under these Terms and Conditions, or the performance of the Seller shall be correspondingly extended.

This document sets forth the terms and conditions pursuant to which the purchaser ("Purchaser") will purchase and Equipment Development Co. Inc. ("Seller") will sell the products, accessories, attachments (collectively the Products) ordered by the Purchaser. These terms and conditions shall govern and apply to the sale of Seller's Products to Purchaser, regardless of any terms and conditions appearing on any purchase order or other forms submitted by Purchaser to Seller, or the inconsistency of any terms therein and herein.

1. PRICE

All prices set forth on any purchase order or other document are F.O.B. Sellers facility or distribution point, as may be determined by Seller (F.O.B. Point). All prices are exclusive of any and all taxes, including, but not limited to, excise, sales, use, property or transportation taxes related to the sale or use of the Products, now or hereafter imposed, together with all penalties and expenses. Purchaser shall be responsible for collecting and/or paying any and all such taxes, whether or not they are stated in any invoice for the Products. Unless otherwise specified herein, all prices are exclusive of inland transportation, freight, insurance and other costs and expenses relating to the shipment of the Products from the F.O.B. point to Purchaser's facility. Any prepayment by Seller of freight insurance and other costs shall be for the account of Purchaser and shall be repaid to Seller.

2. PAYMENT TERMS

Payment terms are as follows. 2% 10 days (to approved and qualified accounts). Net 30 days. This is a cash discount for invoices paid within 10 days after the invoice date, regardless of date of receipt of shipment. This is not a trade discount and will not be granted to accounts that do not adhere to stated terms.

*All past due accounts are subject to a late payment fee of 1.5% per month or a maximum allowed by law if different, along with the expenses incidental to collection including reasonable attorney's fees and costs.

*Seller reserves the right to hold shipments against past due accounts.

*Seller reserves the right to alter payment terms.

3. FREIGHT TERMS

All shipments will be made F.O.B. shipping point as designated in these Terms and Conditions, and title shall pass at the F.O.B. point. Delivery to the initial common carrier shall constitute delivery to the Purchaser. Any claims for loss or damage during shipment are to be filed with carrier by the Purchaser. Seller will not assume responsibility for the performance of the carrier.

Back orders will be shipped in the most practical fashion with charges consistent with our freight policy established with the original order. UPS, FED EX, MAIL or shipments by other couriers are subject to the same terms and conditions as outlined in paragraph #3 "Freight Terms".

4. DELIVERY, DAMAGES, SHORTAGES

Seller shall use reasonable efforts to attempt to cause the Products to be delivered as provided for in these Terms & Conditions. Delivery to the initial common carrier shall constitute the delivery to the Purchaser. Seller's responsibility, in so far as transportation risks are concerned ceases upon the delivery of the Products in good condition to such carrier at the F.O.B. point and all the Products shall be shipped at the Purchaser's risk. Seller shall not be responsible or liable for any loss of income and/or profits, or incidental, special, consequential damages resulting from Seller's delayed performance in shipment and delivery.

5. RETURN OF DEFECTIVE PRODUCTS

Defective or failed material shall be held at the Purchaser's premises until authorization has been granted by Seller to return or dispose of Products. Products that are to be returned for final inspection must be returned Freight Prepaid in the most economical way. Credit will be issued for material found to be defective upon Seller's inspection based on prices at time of purchase.

6. PRODUCTS ORDERED IN ERROR

Products may be returned, provided that claim is made and Seller is notified within 7 days of receipt of Products, and the Products are in original buyer's possession not more than 30 days prior to return, subject to Seller's approval. If Products are accepted for return, they must be Freight Prepaid and buyer will be charged a minimum of 15% restocking charge, plus a charge back for outbound freight charges if the original order was shipped prepaid. Returns are not accepted for any Products that are specifically manufactured to meet the buyer's requirement of either specifications or quantity.

AGREEMENTS

These Terms and Conditions constitute the entire agreement between Seller and Purchaser as it relates to terms and conditions of sale, and supersedes any and all prior oral or written agreements, correspondence, quotations or understandings heretofore in force between the parties relating to the subject matter hereof. There are no agreements between Seller and Purchaser with respect to the Product herein except those specifically set forth in and made part of these terms and conditions. Any additional terms, conditions and/or prices are rejected by Seller.

These terms and conditions may be modified, cancelled or rescinded only by a written agreement of both parties executed by their duly authorized agents.

USE ONLY GENUINE EDCO PARTS & ACCESSORIES
For your own safety, the safety of others and the life of your machine.

Equipment Development Company, Inc.





A Division of Equipment Development Company, Inc.

PARTS BULLETIN

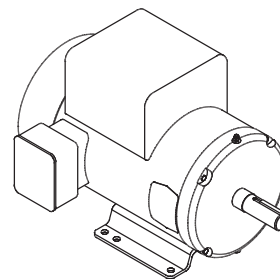
MOTOR TYPE CHANGE ON 5 H.P. 1-PHASE ELECTRIC EQUIPMENT EFFECTIVE FEB. 2011, STARTING W/ S/N 110210185

Baldor (Cat. No. L3608T) replaces Leeson Motor (Cat. No. 131549) on the following Equipment:

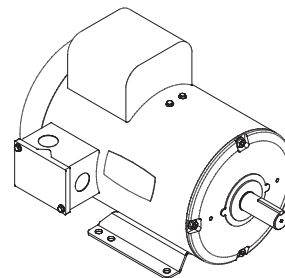
79500 CPM8 Scarifier/Planer
56900 TG10 Turbo Grinder
53600 4EC Concrete Floor Grinder
37300 DS18 Walk Behind Saw
42600 SB14 Walk Behind Saw
49700 C10 Crack Saw
21200 MS20 Masonry Saw

The Model Suffix for this Power Option will be 5B/230/1 (5HP Baldor/230 Volt/Single Phase).
Example: CPM8-5B/230/1

SPECIFICATION CHART		
	BALDOR Cat. No. L3608T	LEESON Cat. No. 131549
Part Number	81026	16069
Horse Power	5	5
Phase	1	1
Hertz	60	60
Volts	230	230
Full Load Amps	19.5	19.8
RPM	3450	3500
Frame	184T	184T
Shaft	1-1/8"	1-1/8"
Weight	86 Lbs.	93 Lbs.



BALDOR
MOTOR



LEESON
MOTOR

REPLACEMENT CAPACITORS FOR BALDOR MOTOR:

PART # 16121 - START CAPACITOR, BALDOR EC1161C06 161-193 MFD, 250V (2 REQ'D.)
PART # 16164 - RUN CAPACITOR, BALDOR OC3040F09SP 40MFD 370V (1 REQ'D.)

See the reverse side of this page for the Wiring Diagrams for these Motors.

