

REVISED STARTING SERIAL # 1645

PARTS LIST MANUAL

Model DY-1



Dyma Grinder



100 Thomas Johnson Drive, Frederick, MD 21702-4600 USA
Phone (301) 663-1600 • 1-800-638-3326
Fax (301) 663-1607 • 1-800-447-3326
Website: www.edcoinc.com • Email: sales@edcoinc.com

Printed in USA
©2001

READ AND UNDERSTAND THE OPERATORS INSTRUCTION MANUAL THOROUGHLY BEFORE ATTEMPTING TO OPERATE THIS EQUIPMENT. Death or serious injury could occur if this machine is used improperly.



SAFETY MESSAGES



The safety instructions are preceded by a graphic alert message of DANGER, WARNING, or CAUTION.



Indicates an imminent hazard which, if not avoided, will result in death or serious injury.



Indicates an imminent hazard which, if not avoided, can result in death or serious injury.



Indicates hazards which, if not avoided, could result in serious injury and or damage to the equipment.

GASOLINE

Powered Equipment



- Do not operate gasoline powered equipment without adequate ventilation. Carbon monoxide is an invisible, odorless gas that can kill.

ELECTRICAL

Powered Equipment



- ELECTRICAL HAZARD** - Be sure equipment is properly grounded. Failure to comply could kill or result in serious injury.



The engine exhaust from this product contains chemicals known to the State of California to cause cancer, birth defects or other reproductive harm.

GENERAL INSTRUCTIONS



- You must read and understand the operators instruction manual and all other manuals associated with this machine. For your safety and the safety of others around you, it is extremely important to fully understand how to operate this machine in the way it was intended. Different model machines or older/newer versions of the same model may have different parts and controls that you need to understand. If instructions are not readable or available DO NOT USE this machine and contact the factory for a replacement Manual.
- You must be able to physically handle the bulk weight and power of this machine. If not properly controlled this machine can cause death or serious injury.
- Do not operate this machine in an impaired mental state. You must be able to exercise good judgement and reactions to maintain a safe working environment.
- This is a "one person" machine which means only one operator can be operating the machine at any one time. For the safety of others, maintain a safe operating distance to other personnel. Your work area should be defined and appropriately marked so bystanders and coworkers do not stand or walk near this machine and end up seriously injured by flying debris or exposing them to harmful noise or dust.
- This equipment is for Commercial use. Although this is a "one person" machine your work team should understand how to shut this machine off and quickly get medical help if an accident strikes the operator.
- Keep all guards in place during operation. The guards are to provide protection from inadvertent contact with dangerous moving parts, pinch points, or hot surfaces.
- Wear appropriate Personal Protective Equipment (PPE) including safety glasses, safety boots, work gloves, respiratory protection,

hearing protection, and head protection. Do not wear loose clothing that can get tangled in moving parts. Failure to do so could result in dismemberment or death. **Wear an approved respirator when removing hazardous materials or when grinding/cutting dry materials. Some dust particles such as concrete dust can contain silicate particles which can cause silicosis (a very serious lung disease). Contact NIOSH or OSHA for further details. When wet grinding/cutting, avoid contact with the concrete/asphalt slurry which can cause serious skin irritations.**

- You must maintain this machine per the maintenance schedule in the operator manual. Remember before adjusting, servicing, or fueling this machine, disconnect the source of power to the machine by disconnecting the spark plug (Gas models), or by unplugging the electrical power cord (electric models) or air hose (Pneumatic models) AT THE MACHINE so you can assure yourself it remains unplugged while you are working on it. Do not modify this machine. Use only genuine EDCO parts and accessories. Repairs and service should be performed by approved EDCO dealers or authorized technicians.
- You should look carefully around the area before you begin work so you can identify potential hazards such as deck inserts, pipes, columns, openings, electrical cords or outlets, or any other objects protruding from the slab surface.
- This machine has no brain so you must use your own. There is no substitute for safety. The safety decals on the machine are to serve as a reminder for information you must already know before you begin using this machine. Take a moment to reread the safety decals each time you use the machine. If your machine is missing any decals, contact the factory for a replacement (EDCO 1-800-638-3326).

PARTS LIST MANUAL

EDCO MODEL DY-1

Section	Page Number
Safety messages & General Instructions	2
How To Order Repair Parts.	3
Illustration 1: Main Assembly Grouping.	4
Parts Listing - Illustration 1: Main Assembly Grouping	5
Illustration 2 : Water Valve/Spray Nozzle & Bearing Grouping	6
Illustration 3 : Diamond Head Assembly	7
Illustration 4 : Electric Motor Grouping.	8
Parts Listing - Illustration 4 : Electric Motor Grouping.	9
Illustration 5 : Gasoline Engine Grouping	10
Parts Listing - Illustration 5 : Gasoline Engine Grouping.	11
Illustration # 6: Propane Engine Grouping.	12
Parts Listing - Illustration 6 : Propane Engine Grouping	13
Notes	14, 15
Limited Equipment Warranty.	back cover

DYMA GRINDERS

PART NO.	MODEL	POWER OPTION
64200	DY1E-5HP/1PH	ELECTRIC 5 HP -1 PHASE - 60 Hz - 230VAC
64300	DY1E-5HP/3PH	ELECTRIC 5 HP - 3 PHASE - 60 Hz -230/460VAC
64700	DY1G -11 H	HONDA 11 HP GXV340 GASOLINE
64500	DY1P -11 H	HONDA 11 HP GXV340 - DAP2 PROPANE

HOW TO ORDER REPLACEMENT PARTS

- ☐ To insure product safety and reliability, always use genuine EDCO replacement parts when making repairs to the equipment.
- ☐ When calling for parts, specify the MODEL and SERIAL NUMBER of the machine which can be found on the NAME PLATE. Keep that information in the space provided. In addition to this information, give part number, description and quantity as listed on the parts list to your parts representative.
- ☐ Please note: Due to improvements and changes in the equipment, the illustrations shown may be different than the actual machine.

FILL IN INFORMATION BELOW

Date of Purchase _____

Name of Machine _____

Model # _____

Serial # _____

Belt Size(s) _____

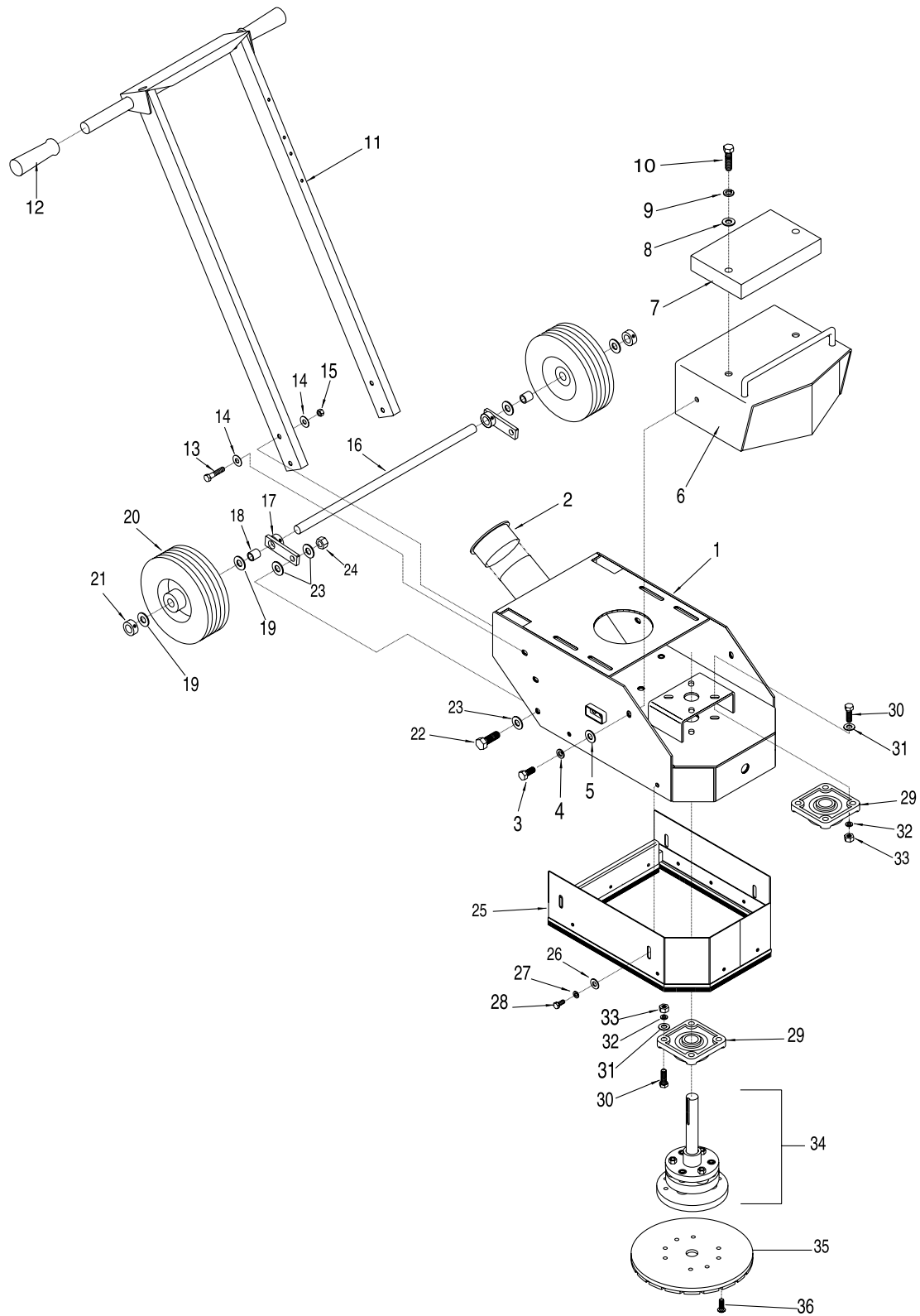
Toll Free: 1-800-638-3326

FAX: 1-800-447-3326

email: sales@edcoinc.com

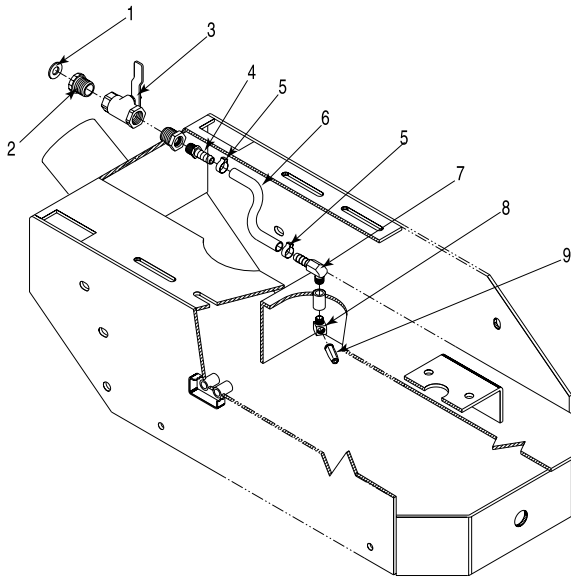
www.edcoinc.com

ILLUSTRATION # 1: MAIN ASSEMBLY GROUPING

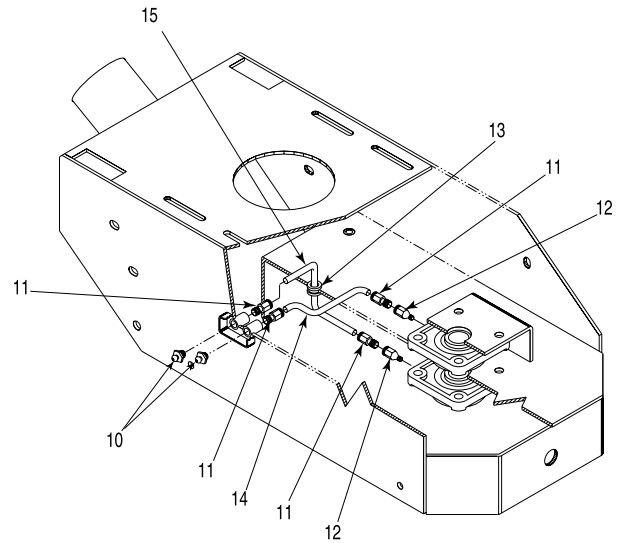


PARTS LISTING - ILLUSTRATION # 1 : MAIN ASSEMBLY GROUPING			
ITEM #	PART #	DESCRIPTION	QTY.
1	86201	MAIN FRAME	1
2	64030	PLUG, CAP 3"	1
3	10907	SCREW, CAP 3/8-16 x 3/4	2
4	10811	WASHER, LOCK 3/8	2
5	10025	WASHER, FLAT 3/8	2
6	86203	HOOD	1
7	86204	WEIGHT BLOCK, 24.5 LB (OPTIONAL FOR ELECTRIC MODEL)	1
8	10312	WASHER, FLAT 1/2	2
9	10045	WASHER, LOCK 1/2	2
10	10357	SCREW, CAP 1/2-03 x 2-1/4	2
11	86012	HANDLE BAR	1
12	10608	GRIP, HAND 1" MODEL AT	2
13	10029	SCREW, CAP 3/8-24 x 1-3/4	4
14	10025	WASHER, FLAT 3/8	8
15	10004	NUT, LOCK 3/8-24	4
16	86206	AXLE SHAFT 3/4" DIA. x 19-5/8" L	1
17	77208	ADJUSTER, WHEEL HEIGHT FLIP	2
18	80022	SPACER, WHEEL 13/16" ID x 13/16" L	2
19	10009	WASHER, FLAT 3/4	4
20	79013	WHEEL 8 x 2-1/2 x 3/4" BRG.	2
21	10428	COLLAR, LOCKING 3/4" ID	2
22	10321	SCREW, CAP 1/2-20 x 1-1/4	2
23	10312	WASHER, FLAT 1/2	6
24	10205	NUT, LOCK 1/2	2
25	86202A	SKIRT ASSEMBLY w/ BRUSHES INCLUDES THE FOLLOWING:	1
	86202	SKIRT ONLY	
	86205	BRUSH SET (42"L & 12-1/4"L PIECES, 1 EA.)	
	10128	RIVET, BLIND 1/8 x .265"L x .250"HD. (8 REQ'D.)	
26	10213	WASHER, FLAT 5/16	4
27	10801	WASHER, LOCK 5/16	4
28	10053	SCREW, CAP 5/16-18 x 3/4	4
29	86212	BEARING, BALL 1" 4-HOLE FLANGE, MED. DUTY	2
30	10003	SCREW, CAP 7/16-20 x 1-1/4	8
31	10062	WASHER, FLAT 7/16	8
32	10450	WASHER, LOCK 7/16	8
33	10481	NUT 7/16-20	8
34	86130	DIAMOND HEAD ASSEMBLY (SEE ILLUS. # 3)	1
35		DIAMOND DISC (INCLUDES SCREWS, ITEM # 36)	1
	19160	DGH-10 10" DISC, STANDARD	
	19165	DGH-10 10" DISC, GREEN CONCRETE	
	19210	10-DC-A 10" DISC w/ LASE-A-RINGS	
	19215	10-DC-R REPLACEMENT RINGS FOR 10-DC-A	
36	86108	SCREW, FLAT HEAD SKT. 3/8-24 x 3/4 (USED w/ DGH-10 DIAMOND DISC)	4
	10855	SCREW, SKT. BUTTON HEAD 3/8-24 x 1 (USED w/ 10-DC-A DIAMOND DISC)	4

ILLUSTRATION 2:



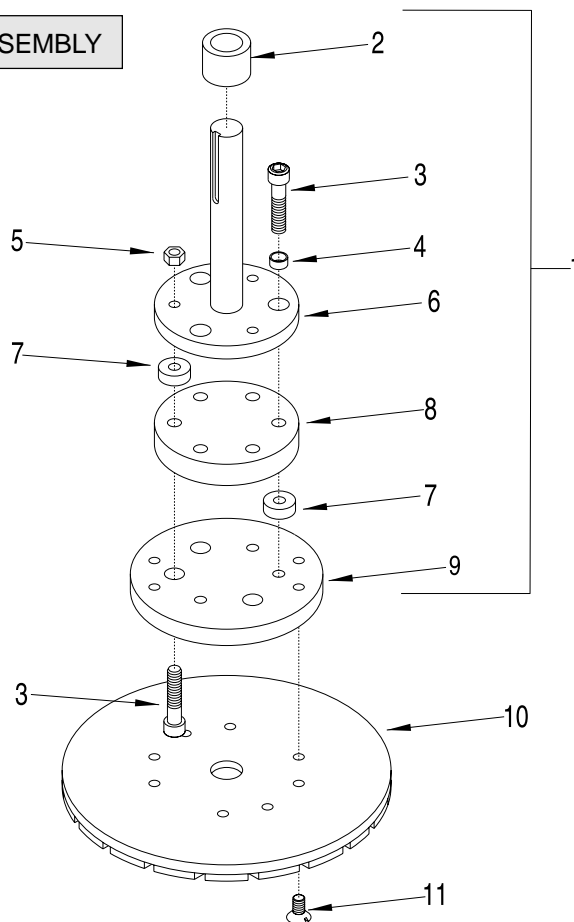
WATER VALVE & SPRAY NOZZLE
GROUPING



BEARING GREASE FITTING
GROUPING

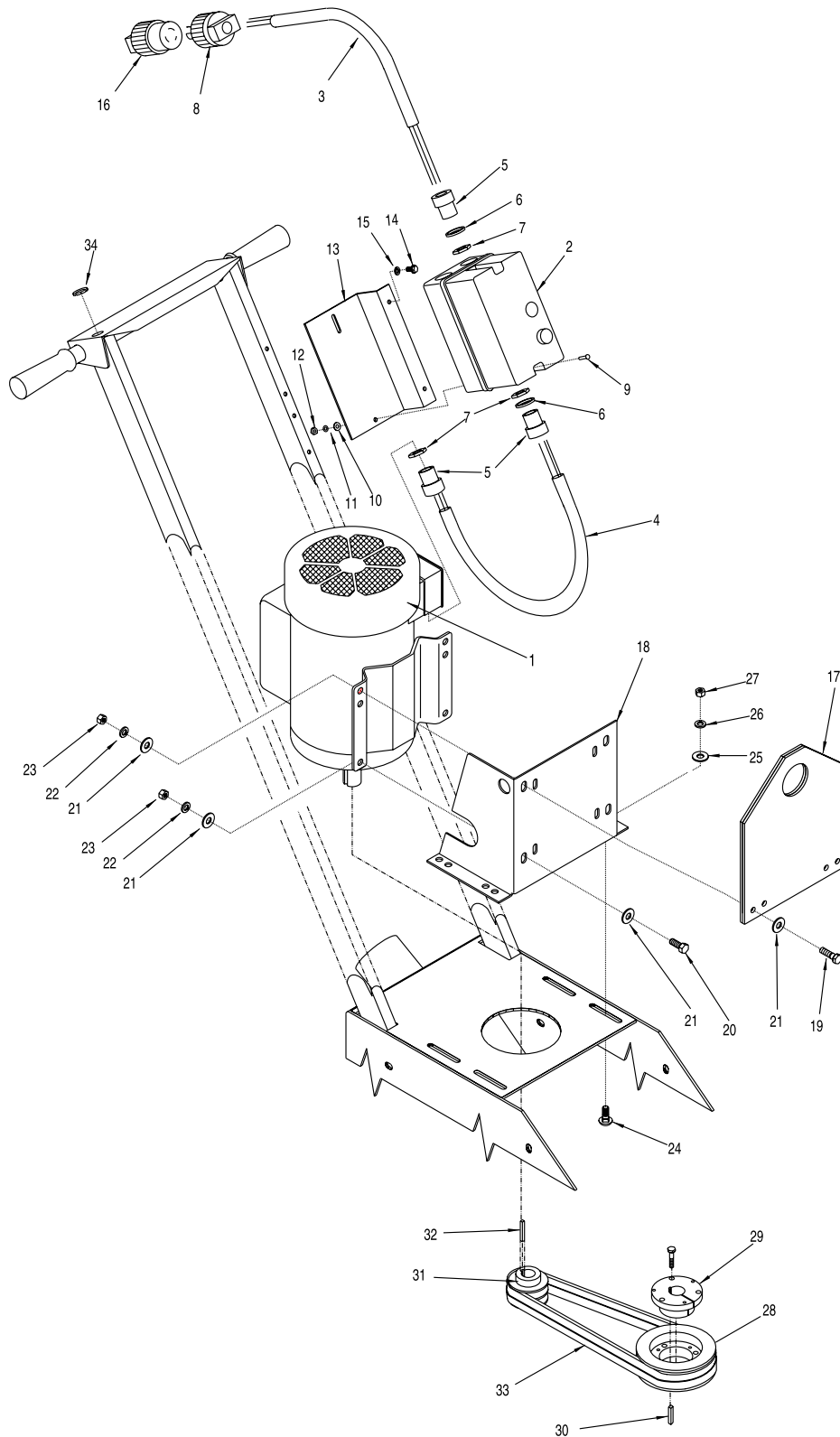
ITEM #	PART #	DESCRIPTION	QTY.
1	10070	WASHER, HOSE 3/4	1
2	10778	CONNECTOR, FEMALE 3/4 NH x 1/2 MPT	1
3	10711	VALVE, BALL 1/2 FPT	1
4	50075	BARB, HOSE 3/8 HOSE x 1/4 MPT	1
5	50069	CLAMP, HOSE, SIZE M6, ADJ. TO 13/16"	2
6	86209	HOSE, WATER 3/8" ID x 9-1/2" L	1
7	11562	BARB ELBOW 90°, 3/8 HOSE x 1/8 MPT	1
8	10772	ELBOW, STREET 1/8 NPT x 45 (BRASS)	1
9	11563	NOZZLE, SPRAY 1/8 MPT (H1/8VV 2501)	1
10	10953	FITTING, GREASE 1/8 NPT STRAIGHT	2
11	10599	FITTING, PUSH-IN 1/4 TUBE x 1/8 MPT BRASS	4
12	50541	ADAPTER, GREASE FITTING 1/8 FPT x 1/4-28	2
13	11560	GROMMET 7/16" ID x 3/16" GRV x 9/16" GD	1
14	86210	TUBE, NYLON 1/4" OD x 7-1/2" L	1
15	86211	TUBE, NYLON 1/4" OD x 10-1/4" L	1

ILLUSTRATION 3 : DIAMOND HEAD ASSEMBLY



ITEM #	PART #	DESCRIPTION	QTY.
1	86130	DIAMOND HEAD ASSEMBLY (ITEMS 2-9)	1
2	86213	SPACER, HEAD 1-1/2" OD x 1" ID x 1-5/32" L	1
3	86111	SCREW, SKT. HD. CAP, 7/16-20 x 2	6
4	86112	SPACER, STEEL 5/8" OD x 7/16" ID x 1/4" THK.	3
5	10481	NUT, 7/16-20 (Note: Use RED <i>LOCTITE</i> ®)	3
6	86131	DIAMOND HEAD HUB & SHAFT	1
7	40329	BUSHING, RUBBER 1" OD x 3/8" ID x 3/8" THK.	6
8	86132	SPACER, DIAMOND HEAD 4-1/2 x 13/16	1
9	86133	DIAMOND HEAD MOUNTING DISC 6"	1
10		DIAMOND DISC (INCLUDES ITEM # 11)	1
	19160	DGH-10 10" DISC, STANDARD	
	19165	DGH-10 10" DISC, GREEN CONCRETE	
	19210	10-DC-A 10" DISC w/ LASE-A-RINGS	
	19215	10-DC-R REPLACEMENTS RINGS FOR 10-DC-A	
11	86108	SCREW, FLAT HEAD SKT. 3/8-24 x 3/4 (USED w/ DGH-10 DIAMOND DISC)	4
	10855	SCREW, SKT. BUTTON HEAD 3/8-24 x 1 (USED w/ 10-DC-A DIAMOND DISC)	4

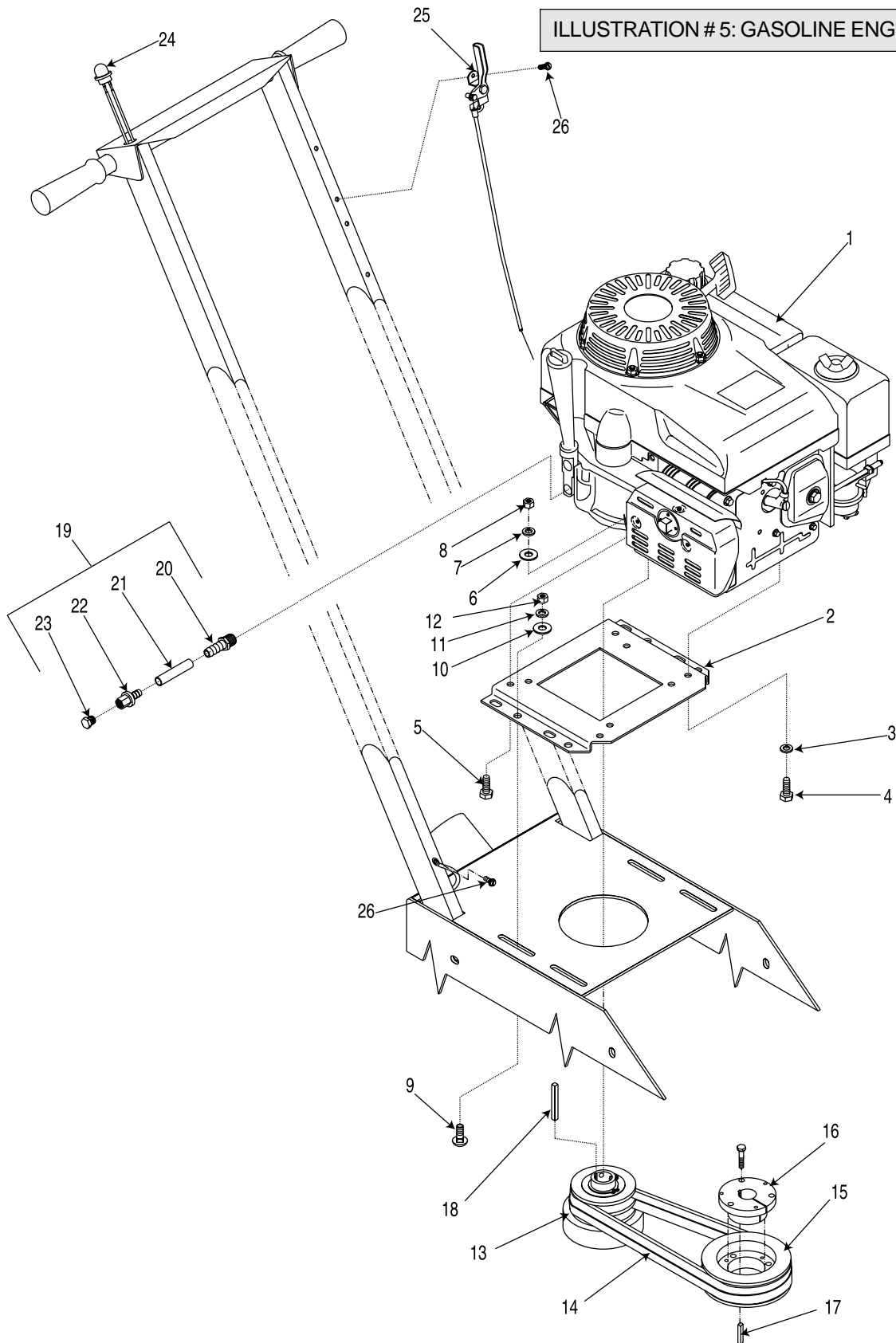
ILLUSTRATION # 4: ELECTRIC MOTOR GROUPING



PARTS LISTING - ILLUSTRATION # 4 : ELECTRIC MOTOR GROUPING			
ITEM #	PART #	DESCRIPTION	QTY.
1		MOTOR, BALDOR 3450 RPM	1
	81026	5.0 HP - 1 PHASE - 60 Hz - 230V	
	81022	5.0 HP - 3 PHASE - 60 Hz - 230V	
2		STARTER, S + S	1
	16316	CBK7-30-220W-MSG-C2 (5 HP-1 PHASE-60Hz-230V)	
	16306	CAK7-16-220W-MF-C2 (5 HP-3 PHASE-60Hz-230V)	
	16301	CAK7-9-380-ME-C2 (5 HP-3 PHASE-60Hz-460V)	
3		WIRE HARNESS, STARTER / PLUG	1
	86026	10/3" x 24' LOA (1 PHASE UNITS)	
	86022	12/4" x 24" LOA (3 PHASE UNITS)	
4		WIRE HARNESS, STARTER / MOTOR	1
	86024	10/3" x 42" LOA (1 PHASE UNITS)	
	86023	12/4" x 42" LOA (3 PHASE UNITS)	
5	10605	CONNECTOR, STRAIN RELIEF 3/4 NPT x .650 - .750 RANGE	3
6	77081	WASHER, FLAT, SWITCH BOX OUTER	2
7	10740	CONDUIT LOCK NUT 3/4 NP	3
8	40037	PLUG, LOCKING 20A/250V (SEE NOTE)	1
9	10362	SCREW, MACHINE 8-32 x 3/4	2
10	10850	WASHER, FLAT # 10	2
11	10461	WASHER, LOCK, INT. TOOTH #8	2
12	10462	NUT 8-32	2
13	86027	BRACKET, MOUNTING, LG. CA3-30 STARTER	1
14	10846	SCREW, SELF-TAPPING HEX WASHER 1/4-20 x 1/2	2
15	10038	WASHER, LOCK 1/4	2
16	40000	PLUG CONNECTOR, LOCKING 20A/250V (SEE NOTE)	1
17	86214	BAIL, LIFTING (OPTIONAL)	1
18	77037	MOUNT, MOTOR	1
19	10309	SCREW, CAP 3/8-24 x 1-1/4	2
20	10021	SCREW, CAP 3/8-24 x 1	2
21	10025	WASHER, FLAT 3/8	8
22	10811	WASHER, LOCK 3/8	4
23	10014	NUT 3/8-24	4
24	10802	BOLT, CARRIAGE 3/8-16 x 1	4
25	10025	WASHER, FLAT 3/8	4
26	10811	WASHER, LOCK 3/8	4
27	10404	NUT 3/8-16	4
28	79032	SHEAVE 5"OD x 2Gr.B x SDS	1
29	10043	BUSHING, SHEAVE SDS x 1" BORE	1
30	10305	KEY 1/4" SQ. x 1-1/4	1
31	79023	SHEAVE 3"OD x 2Gr.B x 1-1/8" BORE	1
32	10115	KEY 1/4" SQ. x 2	1
33	10047	BELT 5L - 300 (REFER TO SERIAL NO. PLATE)	1
34	10005	PLUG, HOLE 7/8" (CHROME)	1

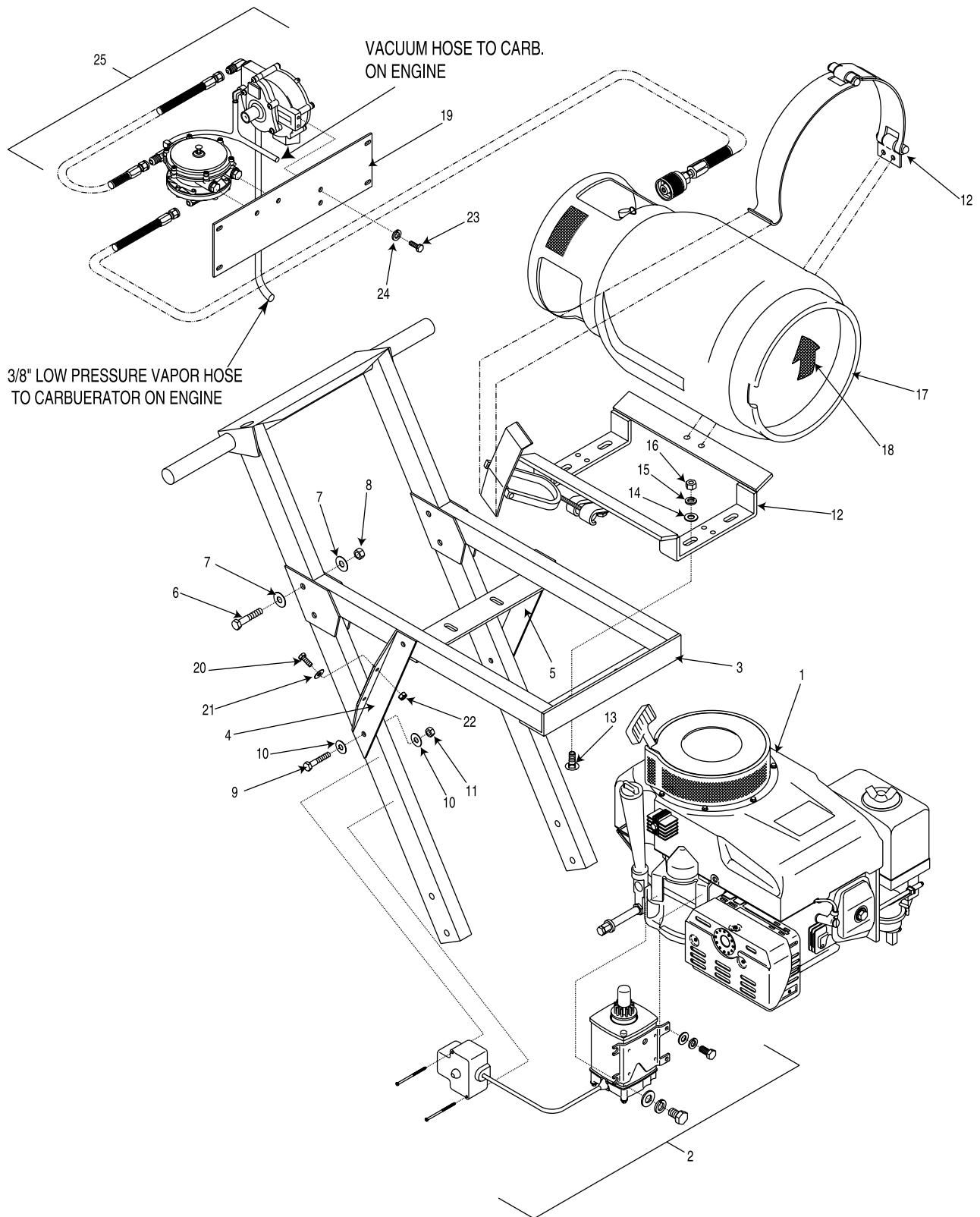
NOTE: PLUG & CONNECTOR (ITEMS # 8 & 16) ARE NOT SUPPLIED ON 3 PHASE UNITS.

ILLUSTRATION #5: GASOLINE ENGINE GROUPING



PARTS LISTING - ILLUSTRATION # 5 : GASOLINE ENGINE GROUPING			
ITEM #	PART #	DESCRIPTION	QTY.
1		ENGINE	1
	76004	HONDA 11 HP GXV340 GASOLINE (SHOWN)	
	15012	HONDA 11 HP GXV340-DAP2 PROPANE	
		(SEE ILLUS. 6, ITEM # 1)	
2	76023	MOUNT, ENGINE	1
3	10801	WASHER, LOCK 5/16	2
4	10048	SCREW, CAP 5/16-24 x 3/4	2
5	10342	SCREW, CAP 5/16-18 x 1-1/2	2
6	10213	WASHER, FLAT 5/16	2
7	10801	WASHER, LOCK 5/16	1
8	10054	NUT 5/16-18	1
9	10802	BOLT, CARRIAGE 3/8-16 x 1	4
10	10025	WASHER, FLAT 3/8	4
11	10811	WASHER, LOCK 3/8	4
12	10404	NUT 3/8-16	4
13	76024	CLUTCH, CENTRIFUGAL	
		3.5" OD x 2Gr x 1" BORE	1
14	10234	BELT 5L-290 (REFER TO SERIAL NO. PLATE)	2
15	79032	SHEAVE 5" OD x 2Gr.B x SDS	1
16	10043	BUSHING, SHEAVE SDS x 1" BORE	1
17	10305	KEY 1/4 SQ. x 1-1/4	1
18	10115	KEY 1/4 SQ. x 2	1
19	11572	OIL DRAIN KIT, 11HP HONDA VERT.	1
20	11543	BARB, PUSH-ON 3/8 HOSE x 20 mm x 1.50	
		MALE	1
21	56116	HOSE, PUSH-ON 3/8" ID x 3" L	1
22	11544	BARB, PUSH-ON 3/8 HOSE x 1/4 FPT	1
23	10776	PIPE PLUG 1/4 NPT (BRASS)	1
24	50010	SWITCH KIT, STOP BUTTON, 7/8" HOLE	1
25	40388	CABLE, THROTTLE CONTROL, LEVER-TYPE 24"	
		(TRIM TO APPROPRIATE LENGTH)	1
26	10877	SCREW, SELF-TAP HEX WASHER 10-24 x 1/2	3

ILLUSTRATION # 6: PROPANE POWER GROUPING



PARTS LISTING - ILLUSTRATION # 6 : PROPANE POWER GROUPING			
ITEM #	PART #	DESCRIPTION	QTY.
1	15012	ENGINE, HONDA 11HP GXV-340 DAP2 PROPANE	1
2	15216	STARTER KIT, ELECTRIC 120 VOLT AC (INCLUDES EXTENSION CORD - NOT SHOWN)	1
3	86140	MOUNT, PROPANE TANK, DY-1	1
4	86141	GUSSET, PROPANE TANK MOUNT - RH, DY-1	1
5	86142	GUSSET, PROPANE TANK MOUNT - LH, DY-1	1
6	10029	SCREW, CAP 3/8-24 x 1-3/4	4
7	10025	WASHER, FLAT 3/8	8
8	10004	NUT, LOCK 3/8-24	4
9	10342	SCREW, CAP 5/16-18 x 1-1/2	4
10	10213	WASHER, FLAT 5/16	8
11	10807	NUT, LOCK 5/6-18	4
12	77061	PROPANE TANK MOUNTING BRACKET TB-4	1
13	10802	BOLT, CARRIAGE 3/8-16 x 1	4
14	10025	WASHER, FLAT 3/8	4
15	10811	WASHER, LOCK 3/8	4
16	10404	NUT 3/8-16	4
17	15130	PROPANE TANK 20LB HORZ. w/ ACME VALVE	1
18	91122	DECAL, ARROW, RED, 3 x 3	1
19	86143	MOUNT, REGULATOR/FUELOCK-FILTER, DY-1	1
20	10834	SCREW, CAP 1/4-20 x 1/2	4
21	10602	WASHER, FLAT 1/4	4
22	10861	NUT, KEPS 1/4-20	4
23	10018	SCREW,CAP 1/4-20 x 3/4	4
24	10038	WASHER, LOCK 1/4	4
25	15102	VAPOR KIT for HONDA GXV340-DAP2	1

NOTES

NOTES

LIMITED EQUIPMENT WARRANTY

Equipment Development Company, Inc. herein referred to as EDCO warrants that each new unit manufactured by EDCO to be free from defects in material and workmanship in normal use and service for a period of (1) one year (except in the case of the cutter drum assembly on all model concrete asphalt planes, in which case the warranty period shall be 90 days) from date of shipment to the original retail or equipment rental center owner.

EDCO will, at its option, repair or replace, at the EDCO factory or at a point designated by EDCO any part, which shall appear to the satisfaction of EDCO inspection to have been defective in material or workmanship.

This warranty, does not apply to failure occurring as a result of abuse, misuse, negligent repairs, corrosion, erosion, normal wear and tear, alterations or modifications made to the product without express written consent of EDCO: or failure to follow the recommended operating practices and maintenance procedures as provided in the products operating and maintenance manuals.

This warranty does not obligate EDCO to bear any transportation charges in connection with the replacement or repair of defective parts. This warranty does not obligate EDCO to bear any expense for travel time or of personnel in connection with any service calls.

Accessories or equipment furnished and installed on the product by EDCO but manufactured by others, including but not limited to engines, motors, electrical equipment, transmissions, etc., shall carry the accessory manufacturers' own warranty.

THIS WARRANTY IS IN LIEU OF ALL OTHER WARRANTIES, EXPRESSED OR IMPLIED, OR STATUTORY, INCLUDING ANY WARRANTIES OF MERCHANTABILITY OR OF FITNESS FOR A PARTICULAR PURPOSE.

LIABILITY LIMITATIONS

The remedies of the user set forth under provisions of warranty outlined above are the exclusive and total liability of EDCO with the respect to their sale or the equipment and service furnished hereunder, in connection with the performance or breach thereof, or from the sale, delivery, installation, repair or technical direction covered by or furnished under the sale, whether based on contract, warranty, negligence, indemnity, strict liability, or otherwise shall not exceed the purchase price of the unit of equipment upon which such liability is based.

EDCO will not in any event be liable to the user, any successors in interest or any beneficiary or assignee relating to this sale for any consequential, incidental, indirect, special or punitive damages arising out of this sale or any breach thereof, or any defects on, or failure of, or malfunction of the equipment under this sale based upon loss of use, lost profits or revenue, interest, lost goodwill, work stoppage, impairment of other goods, loss by reason of shutdown or non-operation, increased expenses of operation of the equipment, cost of purchase or replacement power of claims of users or customers of the user for service interruption whether or not such loss or damage is based on contract, warranty, negligence, indemnity, strict liability, or otherwise.

EDCO reserves the right to modify, alter and improve any part or parts without incurring any obligation to replace any part or parts previously sold without such modified, altered or improved part or parts.

No person is authorized to give any other warranty or to assume any additional obligation on EDCO's behalf unless made in writing and signed by an officer of EDCO.

Equipment Development Company, Inc.

USE ONLY GENUINE EDCO PARTS AND ACCESSORIES

For your own safety, the safety of others and the life of your machine

